

VINCHOME M3051 LED Mirror With Touch Sensor User Manual

[Home](#) » [VINCHOME](#) » VINCHOME M3051 LED Mirror With Touch Sensor User Manual 

VINCHOME

M3051 LED Mirror With Touch Sensor
User Manual

Contents

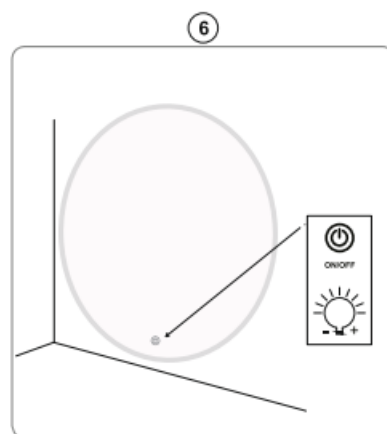
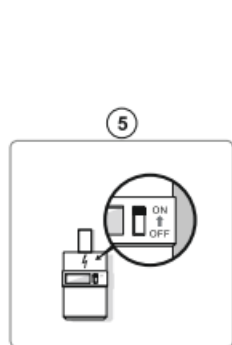
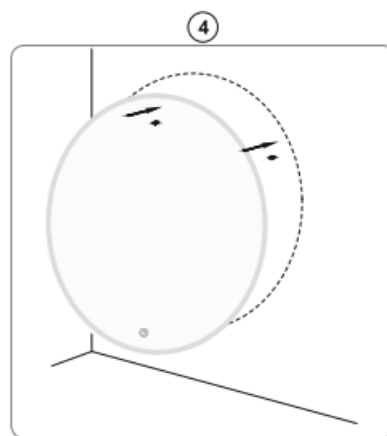
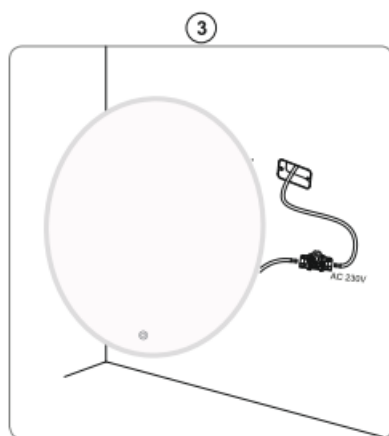
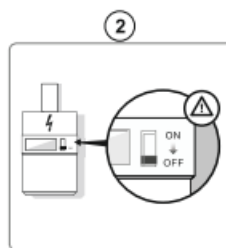
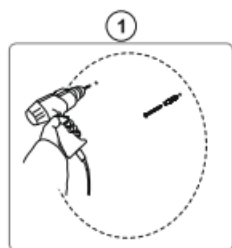
- [1 M3051 LED Mirror With Touch Sensor](#)
- [2 APP connection Manual](#)
- [3 INSTRUCTION MANUAL](#)
- [4 HOW TO USE](#)
- [5 Documents / Resources](#)
 - [5.1 References](#)

M3051 LED Mirror With Touch Sensor

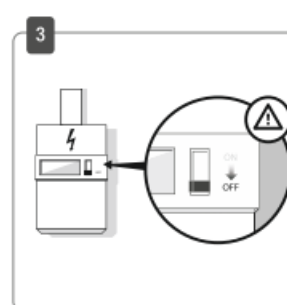
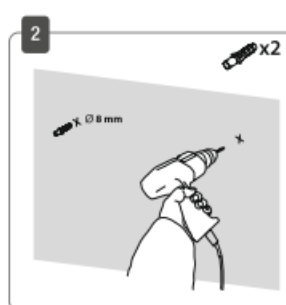
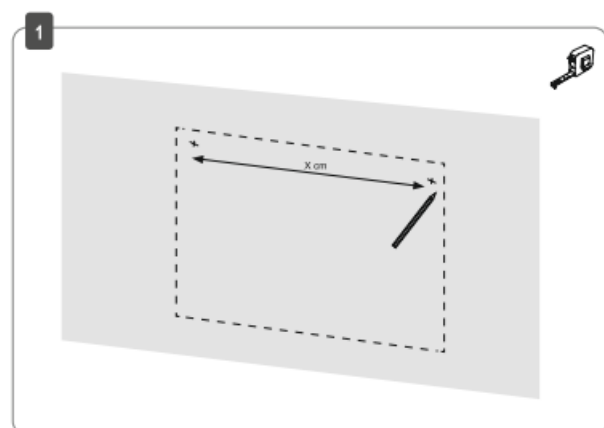
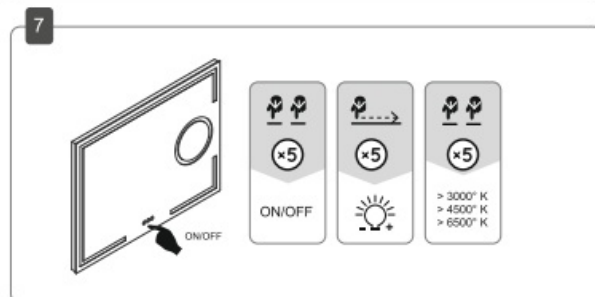
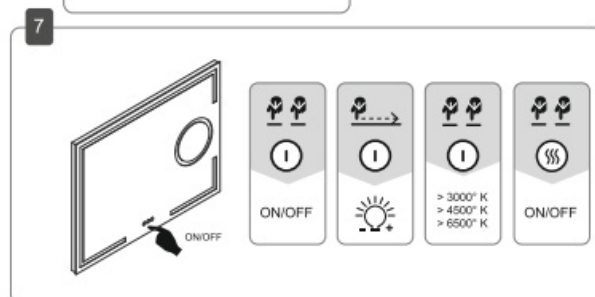
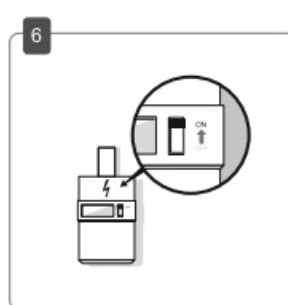
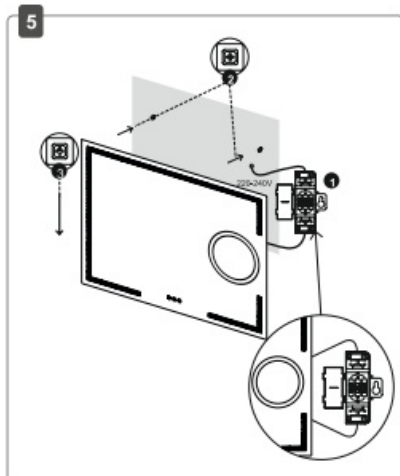
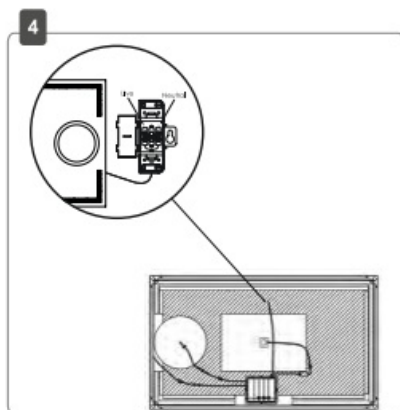
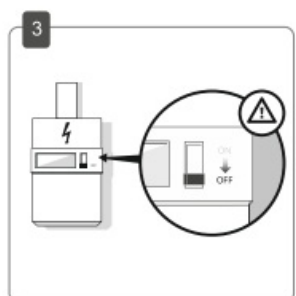
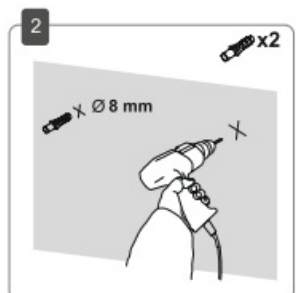
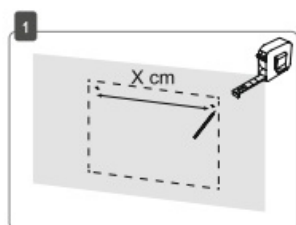
MODEL	SIZE (cm)	Power (W)	LED power	Lumen
M3051-NORMANDY TDXM	60	42,5	18,5	1415
M3051-MADRID TDXMB	60	27,5	19,5	1492
M3051 RIO TDXM	60	51,0	39,0	2980
M3071-EDELWEISS TDXM	60	26,5	18,5	1415
M3057-NAVARRE TDXMW	90	64,0	28,0	2142
M2001-NAVARRE TDXMWBP	100*70	62,5	20,0	1530
M1022-MELBOURNE TDXMW	60*80	44,0	20,0	1530
M3111-ATLANTA TDXMW	120*70	72,5	42,5	3251
M5117-SPRINGFIELD TDXMWB	601190	47,5	29,5	2257
M5114-BERLIN TDXMWB	120.70	66,0	33,0	2525

HLIN1	
Input:	AC220~240V
Output:	12VDC 2.5A MAX
Bluetooth	
Power:	6W
Sersitivity:	84~90dB
Impedance:	40

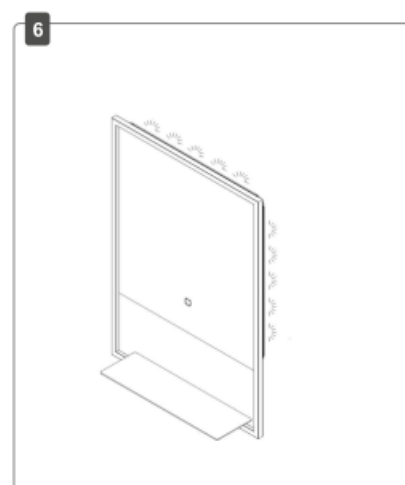
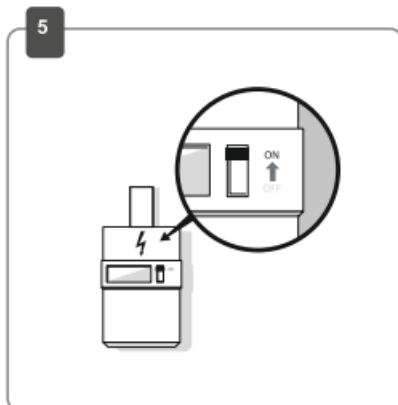
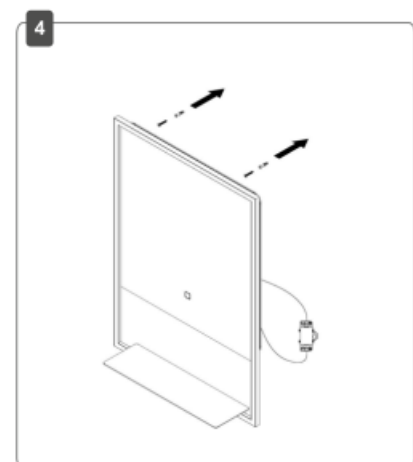
M3051-NORMANDY / M3051-MADRID / M3051-RIO M3071-EDELWEISS / M3057-NAVARRE



M3111-A TLANTA

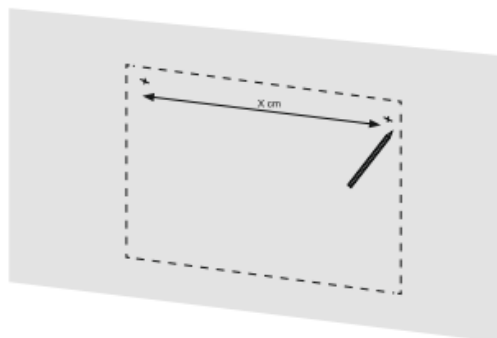


M5117-SPRINGFIELD

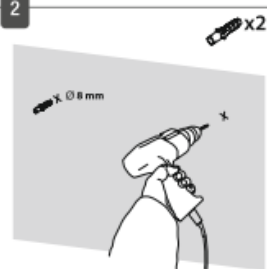


M5114-BERLIN

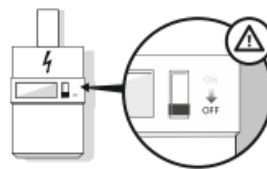
1



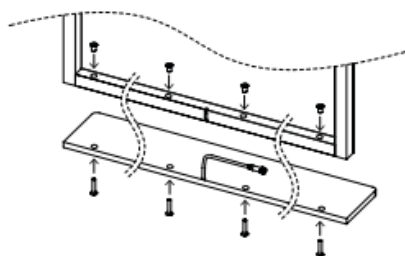
2



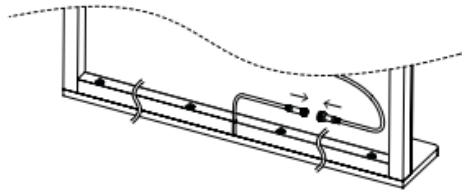
3

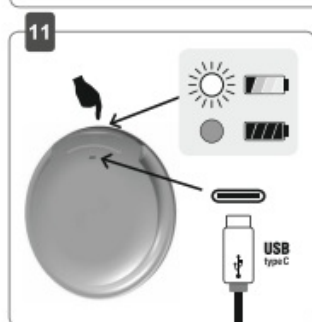
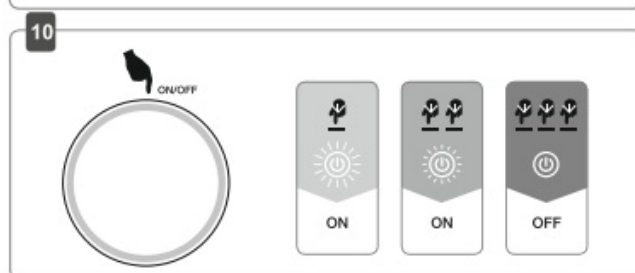
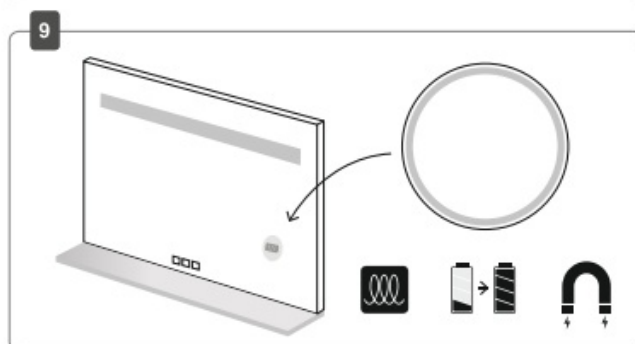
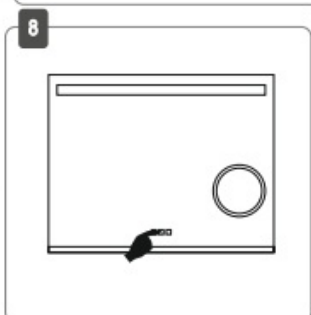
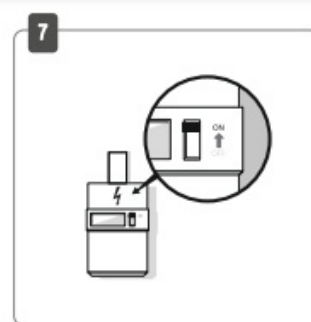
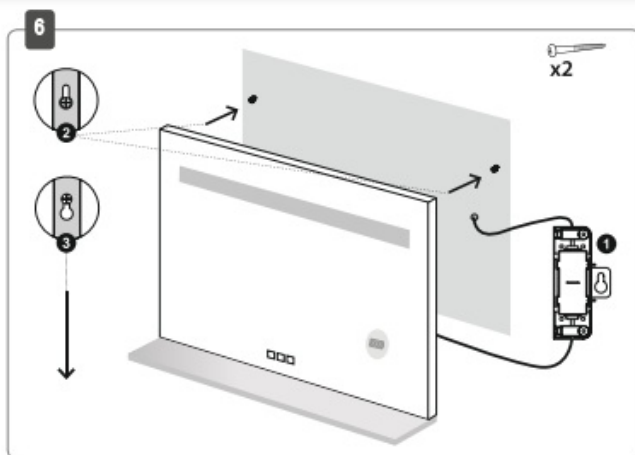


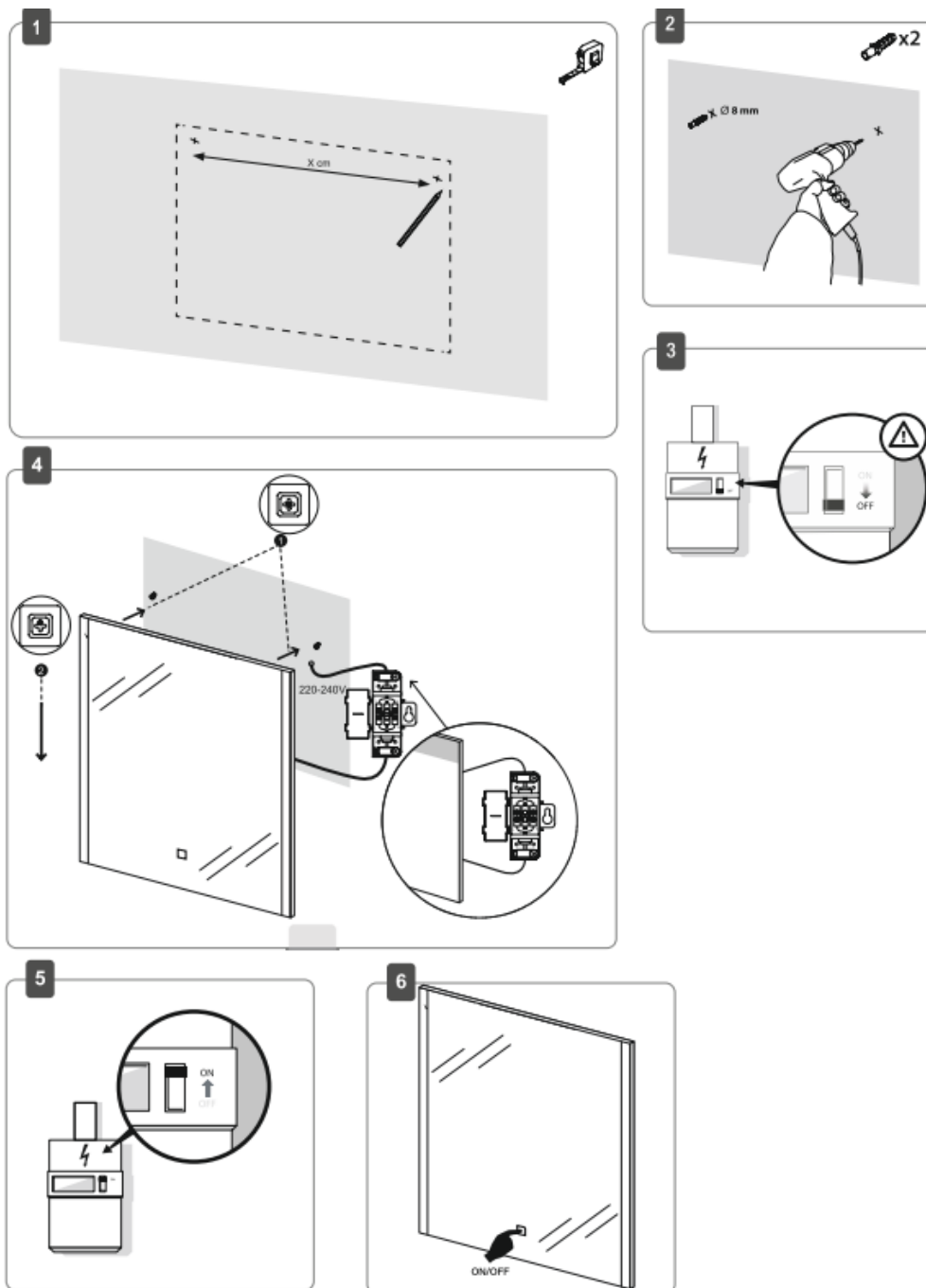
4



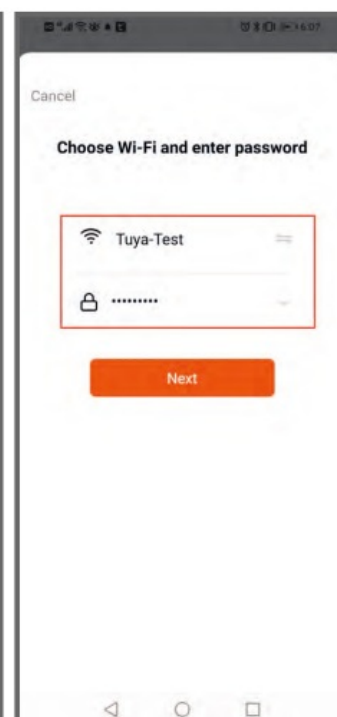
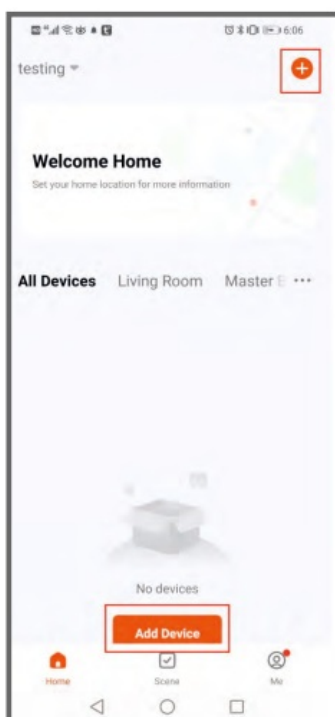
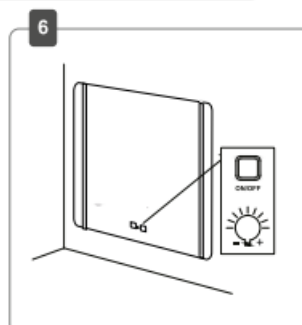
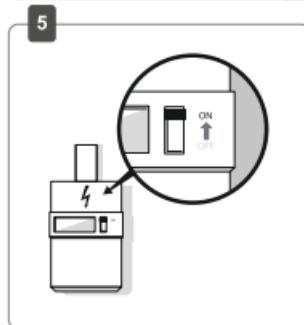
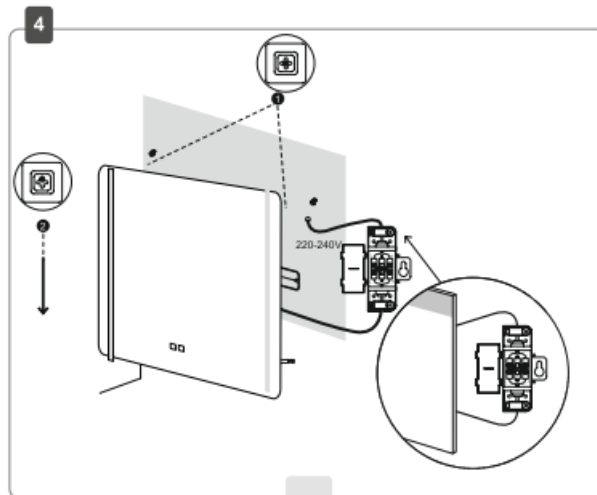
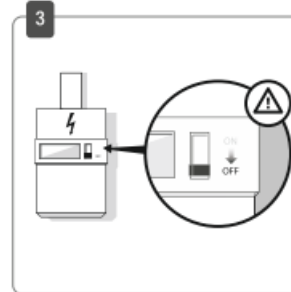
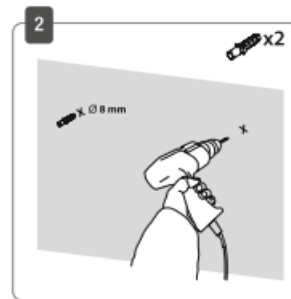
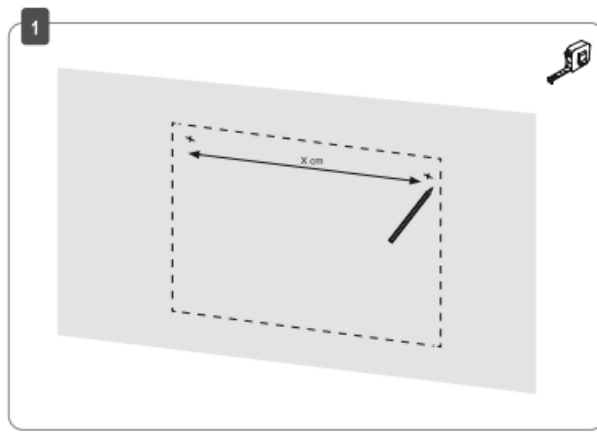
5







M2001-NAVARRE



APP connection Manual

1. Download the Toya Smart app on Google play or IOS pasture. Register an account on the Toya smart app.
2. Power off Ion the device for three times to enter the distribution network (pairing) mode. NB/ Power off/on 3 times – from electricity supply (not the LED button on mirror). For example, it can be done by connecting the mirror to switch, to a socket or turn off/on the circuit breaker (switch) in the electrical cabinet. It must be done only one time for the first pairing with the application.
3. After that click „+“ icon at the right upper corner in the app
4. The mirror will appear, click „Add“ near it
5. Then you have to choose your home WiFi that will be always connected with your mirror, enter the password (prepare it)
6. Wait some seconds and your mirror will show the weather, date and clock.
7. If you click on your device in app, you can choose the format of clock and date, also change the name of device.

INSTRUCTION MANUAL

This is a high quality product and must be installed and maintained as per these instructions or it may invalidate the Warranty.

To installer: Please leave this manual with the user/householder when finished.

WARNING:

When using electrical appliances, comply with basic safety precautions in order to reduce the risk of fire, electric shocks and personal injury.

GENERAL INSTRUCTIONS

No-one, and in particular no child, must be in the vicinity of the workplace. Check that the electrical specifications of this mirror light are compatible with your installation.

WARNING:

The power supply must be switched off before installation or maintenance.

Remove The fuse or de-activate it, and make sure that it cannot be reactivated.

The mirror light must be installed by a qualified electrician in accordance with the wiring standards in force in the country where the installation takes place.

This electrical product complies with the safety standards in force. Repairs must only be carried out by qualified technicians using original spare parts. Any failure to follow these instructions can be particularly dangerous to users and will invalidate the Warranty.

1. Fix the screw(s) on the wall where the mirror is to be placed.

Screw fastenings should be made in concrete or other solid structure, or in structures that have been tested and approved for fastenings. Before drilling a hole, make sure that there is no risk of drilling through an existing non-visible cable or pipe; and make sure that the hole position for the expansion screw fits the mirror and the hanging direction.

2. Isolate the power supply by means of the electrical system main switch
3. Connect the electricity supply to the mains cable (230V~), making sure that the conductors match (mains brown and neutral blue).
4. Carefully attach the mirror to the wall, making sure the mirror hanging properly and level.
5. Restore the power supply.
6. Switch on the mirror light. Your mirror light is now ready to work

Short Touch – ON/OFF

Long Touch – Dimming

The demister starts working when switching on the mirror light.

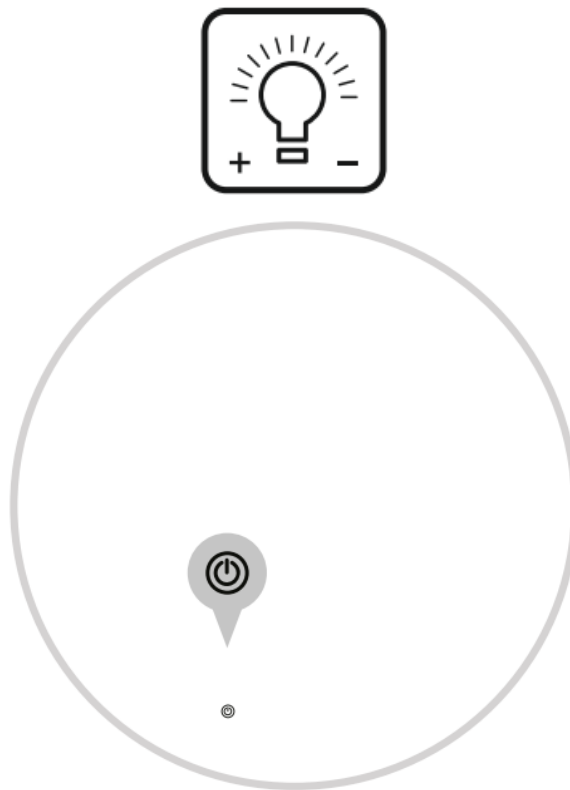
Cleaning and Maintenance:

Clean regularly and wipe off excess moisture by using a dry cloth only. Installation and maintenance must only be carried out by a Qualified Electrician.

HOW TO USE

For the LED Light:

1. Press on the touch switch for a short time to control the light on or off and switch warm light and daylight.
(Note: The defogging is turned on or off with mirror light)
2. After the light is turned on, press the touch switch for a long time to adjust the brightness of the light.
3. Stop whenever you think the brightness is OK for you .

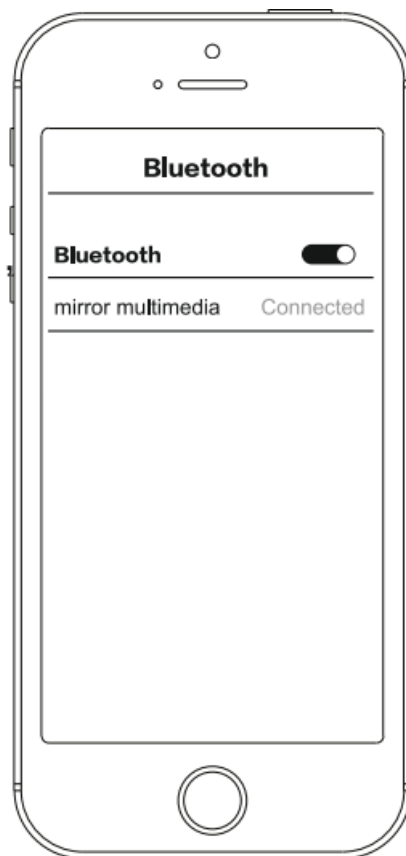


For Bluetooth Music:

1. Turn on the power.
2. Open your phone Bluetooth search for 'mirror multimedia' and connect.
3. Then you can play any music within your phone/tablet.

NOTE: Bluetooth is connectable to one device only. If you want to connect the second device, please first disconnect the first device.






VINCHOME

Importer: KTS Baltic OU

T~hesaju tee 11,
13917 Tallinn, Estonia

info@ktsbaltic.ee

Documents / Resources

	<p>VINCHOME M3051 LED Mirror With Touch Sensor [pdf] User Manual</p> <p>M3051 LED Mirror With Touch Sensor, M3051, LED Mirror With Touch Sensor, Mirror With Touch Sensor, Touch Sensor, LED Mirror, Mirror</p>
---	---

References

- [User Manual](#)