



VIMUKUN CM9429D-UL Single Serve Coffee Maker User Manual

[Home](#) » [VIMUKUN](#) » VIMUKUN CM9429D-UL Single Serve Coffee Maker User Manual 

Contents

- 1 VIMUKUN CM9429D-UL Single Serve Coffee Maker
- 2 IMPORTANT SAFEGUARDS
- 3 ADDITIONAL IMPORTANT SAFEGUARDS
- 4 PLASTICIZER WARNING
- 5 KNOW YOUR COFFEE MAKER
- 6 BEFORE USING FOR THE FIRST TIME
- 7 MAKE A CAPSULE COFFEE
- 8 MAKE A GROUND COFFEE
- 9 MAINTENANCE INSTRUCTIONS
- 10 DESCALING INSTRUCTIONS
- 11 STORING INSTRUCTIONS
- 12 TROUBLESHOOTING
- 13 CUSTOMER SERVICE
- 14 Documents / Resources
 - 14.1 References
- 15 Related Posts

VIMUKUN

VIMUKUN CM9429D-UL Single Serve Coffee Maker



IMPORTANT SAFEGUARDS

When using electrical appliances, basic safety precautions should always be followed to reduce the risk of fire, electric shock, and/or injury to persons, including the following:

1. Read all instructions.
2. This appliance is not intended for use by persons (including children) with reduced physical, sensory, or mental capabilities, or lack of experience and knowledge, unless they are closely supervised and instructed concerning use of the appliance by a person responsible for their safety.
3. Close supervision is necessary when any appliance is used by or near children. Children should be supervised to ensure that they DO NOT play with the appliance.
4. DO NOT touch hot surfaces. Use handles or knobs. Care must be taken, as burns can occur from touching hot parts or from spilled, hot liquid.
5. To protect against electric shock, DO NOT place cord, plug, or coffee maker in water or other liquid.
6. Unplug from outlet when the coffee maker is not in use and before cleaning. Allow to cool before putting on or taking off parts and before cleaning the appliance.
7. Coffee maker must be operated on a flat surface away from the edge of counter to prevent accidental tipping.
8. DO NOT operate any appliance with a damaged supply cord or plug, or after the appliance malfunctions or has been dropped or damaged in any manner. Supply cord replacement and repairs must be conducted by the manufacturer, its service agent, or similarly qualified persons in order to avoid a hazard.
9. The use of accessory attachments not recommended by the appliance manufacturer may cause injuries.
10. DO NOT use distilled water.
11. DO NOT let cord hang over edge of table or counter or touch hot surfaces, including stove.
12. DO NOT place on or near a hot gas or electric burner, or in a heated oven. Avoid contacting moving parts.
13. Be certain lid is securely in place during frothing or warming.
14. To disconnect appliance, press control button(s) until power indicator light is no longer glowing and then

remove plug from wall outlet.

15. To unplug, grasp the plug and pull from the outlet. DO NOT pull on the power cord.
16. DO NOT place coffee maker in a cabinet when in use.
17. **WARNING!** To avoid hot water spraying from the piercing needle, DO NOT lift the lid during the brew process.
18. DO NOT use appliance for other than intended use.
19. **WARNING!** To reduce the risk of fire or electric shock, DO NOT remove the bottom cover of the coffee maker.
There are no user-serviceable parts inside. Repair should be done by authorized service personnel only.
20. **CAUTION!** Cut Hazard: Removable single-serve pod holder contains a sharp needle. Use caution when handling.
21. **CAUTION!** Cut Hazard: Piercing needle is sharp. Use caution when cleaning.
22. To reduce the risk of fire DO NOT store anything directly on top of the appliance surface when the appliance is in operation.
23. **CAUTION:** There are two sharp needles that puncture the capsules.
24. One is located inside the capsule adaptor and the other is located on the top underside of the adaptor compartment. To avoid risk of injury DO NOT place fingers inside either parts. Also exercise caution when cleaning the parts.
25. **CAUTION:** There are boiling water in the front tab lid section during the brew process.
26. DO NOT open the lid at any time for risk of injury.
27. Only use capsules intended for this appliance. If the capsule does not fit, DO NOT force the capsule into the appliance.
28. **WARNING:** To avoid the risk of injury, DO NOT open the brew chamber during the brew process.
29. DO NOT leave appliance unattended while in use.

SAVE THESE INSTRUCTIONS HOUSEHOLD USE ONLY

ADDITIONAL IMPORTANT SAFEGUARDS

NOTES ON THE PLUG

- This appliance has a polarized plug (one blade is wider than the other).
- To reduce the risk of electric shock, this plug will fit in a polarized outlet only one way.
- If the plug does not fit fully into the outlet, reverse the plug.
- If it still does not fit, contact a qualified electrician.
- DO NOT modify the plug in any way.
 - **WARNING:** Improper use of the power cord may result in electric shock. Consult a qualified electrician if necessary.

NOTES ON THE CORD

1. A short power-supply cord (or detachable power-supply cord) is provided to reduce risks resulting from becoming entangled in or tripping over a longer cord.
2. Longer detachable power-supply cords or extension cords are available and may be used if care is exercised in their use.
3. If a long detachable power-supply cord or extension cord is used:

- **(a)** The marked electrical rating of the detachable power-supply cord or extension cord should be at least as great as the electrical rating of the appliance;
- **(b)** If the appliance is of the grounded type, the extension cord should be a grounding- type 3-wire cord;
- **(c)** The longer cord should be arranged so that it will not drape over the counter top or table top where it can be pulled on by children or tripped over.

PLASTICIZER WARNING

- **CAUTION:** To prevent plasticizer from migrating from the finish of the counter top or table top or other furniture, place NON-PLASTIC coasters or place mats between the appliance and the finish of the counter top or table top.
- Failure to do so may cause the finish to darken; permanent blemishes may occur or stains can appear.

ELECTRIC POWER

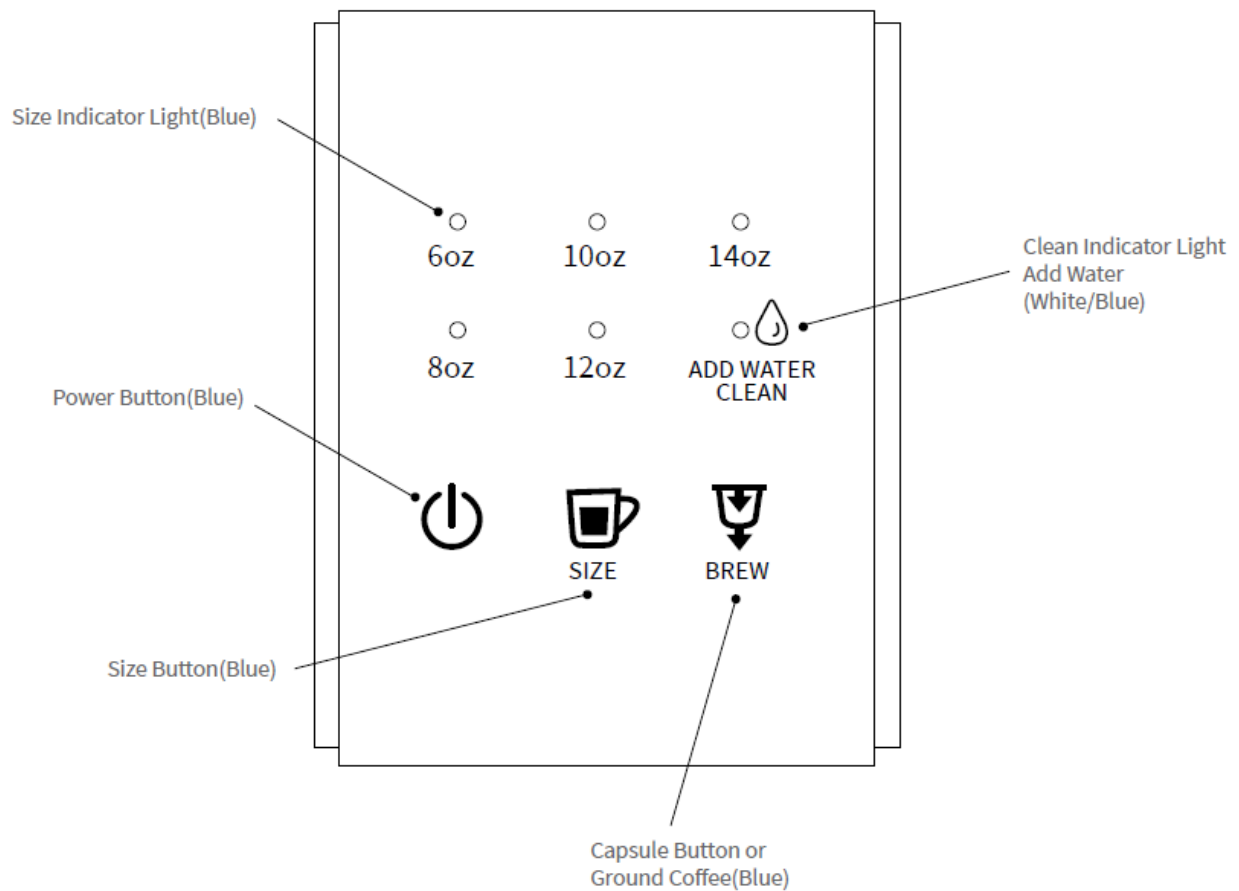
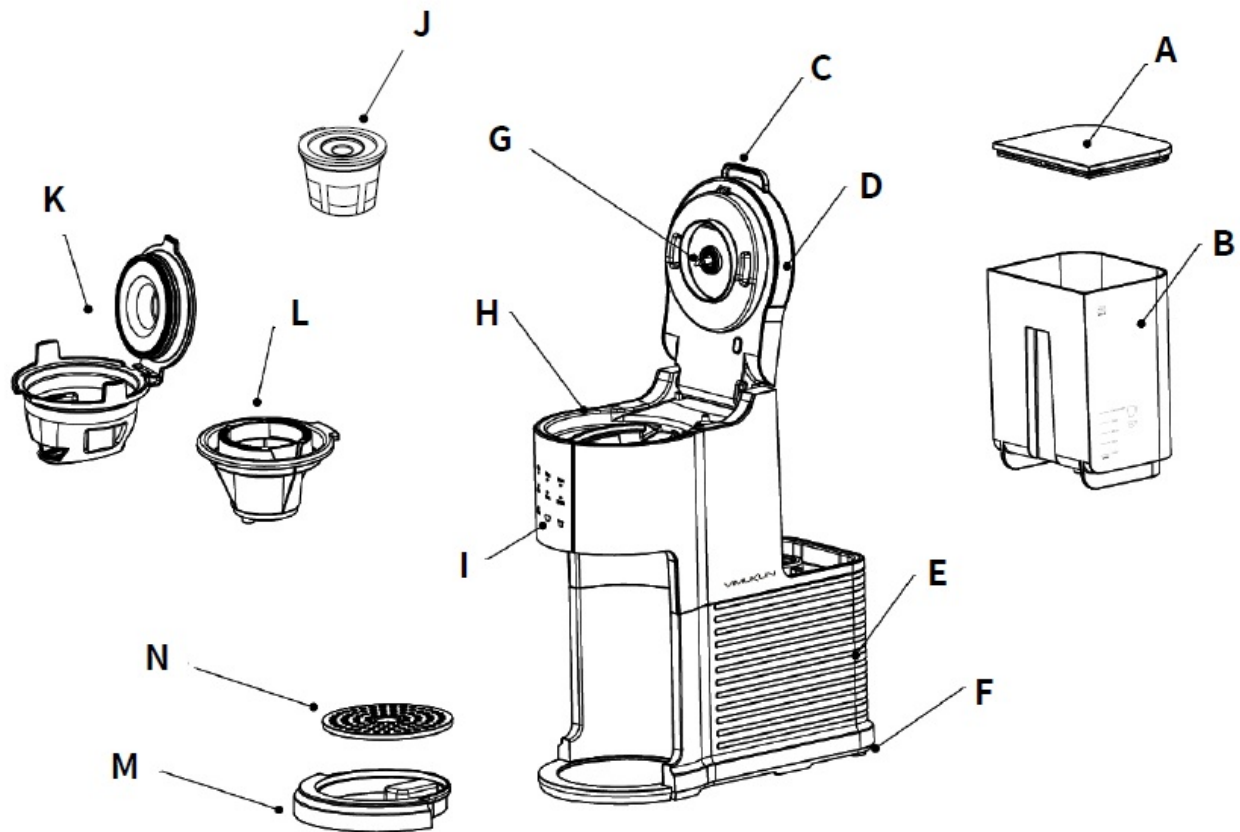
- If the electrical circuit is overloaded with other appliances, your appliance may not operate properly.
- It should be operated on a separate electrical circuit from other appliances.

WARNING: TO REDUCE THE RISK OF FIRE OR ELECTRICAL SHOCK, DO

- NOT REMOVE THIS COVER. NO USER SERVICEABLE PARTS INSIDE. REPAIR SHOULD BE DONE BY AUTHORIZED SERVICE PERSONNEL ONLY.

KNOW YOUR COFFEE MAKER

- **A.** Water Tank Cover
- **B.** Water Tank
- **C.** Front Lid Tab
- **D.** Adaptor Compartment Lid Main Housing
- **E.** Bottom Cover
- **F.** Water Outlet Needle Adaptor Compartment Control Panel
- **G.** Reusable Capsule Ground Coffee Adaptor Capsule Adaptor
- **H.** Drip Tray Cover
- **I.** Drip Tray



CONTROL PANEL

BEFORE USING FOR THE FIRST TIME

- **CAUTION:** To protect against electrical shock, do not immerse the Coffee Maker or allow the power cord to

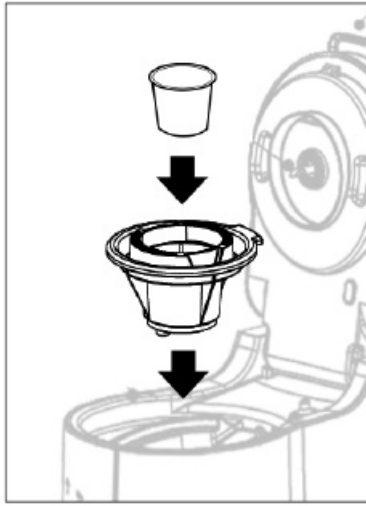
come into contact with water or other liquids.

- Remove all packing material and labels from the inside and outside of the Coffee Maker. Place the unit on a flat, clean surface. Make sure to remove capsule adaptor and ground coffee adaptor from the inner packaging.
1. Before use, thoroughly clean both adaptors with warm soapy water.
 2. Clean the inside of the unit, it is recommended to brew a full tank of water, which corresponds to brew 3 to 4 tall cups.
 3. Grasp the removal water tank using the designated grips. Lift the water tank up and remove it from the base of the unit.
 4. Remove the lid and fill the water tank to the MAX indicator line with cold water.
 - **NOTE:** Never fill the water tank past the MAX indicator line and ensure water level is above the MIN indicator line.
 5. Put the lid back and put the water tank back into place. Place down firmly to make sure it is securely in place.
 6. Select the desired height for the drip tray, depending on the size of the cup, mug, or tumbler being used.
 7. Place the empty cup, mug, or tumbler in position on the drip tray cover.
 - **NOTE:** Do not add any component for this initial cleaning.
 8. Press the Power button, the product is powered on and the indicator light is on. To select the brew size (6 oz., 8 oz., 10 oz., 12 oz., or 14 oz.), press the SIZE button until the indicator light illuminates the desired size.
 9. Press the BREW button, the machine starts to work.
 10. At the end of the cycle, the Coffee Maker enter standby mode.
 - **IMPORTANT:** Repeat this process twice to thoroughly clean the machine before using for the first time.
 11. Unplug the Coffee Maker when not in use.

MAKE A CAPSULE COFFEE

WARNING: Before brewing, it is recommended the water tank be filled at least to the MIN indicator line. To avoid damage to your Coffee Maker, never operate your Coffee Maker when the water tank is empty.

1. Grasp the removal water tank using the designated grips. Lift the water tank up and remove it from the base of the unit.
2. Remove the lid and fill the water tank to the MAX indicator line with cold water.
 - **NOTE:** Never fill the water tank past the MAX indicator line and ensure water level is above the MIN indicator line.
 - If the Add water Blue light on the control panel flashes, it indicates that there is no water in the water tank, please add room temperature water into the water tank, then re-start to work.
3. Put the lid back and put the water tank back into place.
4. Place down firmly to make sure it is securely in place.
5. Select the desired height for the drip tray, depending on the size of the cup, mug, or tumbler being used.
6. Place the empty cup, mug, or tumbler in position on the drip tray cover.
7. Pull the adaptor compartment lid's front lid tab up to unlock and lift the lid.
8. Choose the capsule adaptor into the adapter compartment. Add the capsule of your choice into the capsule adaptor. Press down on the capsule until it is flush with the adaptor. You will hear a pierce as the needle penetrates the capsule.



9. Press the adaptor compartment lid down firmly. An audible click can be heard as the lid is locked firmly into position, and the top of the capsule will be punctured.
10. Plug the Coffee Maker into a 120V AC electrical wall outlet.
11. Press the Power button, the product is powered on and the indicator light is on.
12. To select the brew size (6 oz., 8 oz., 10 oz., 12 oz., or 14 oz.), press the SIZE button until the blue indicator light illuminates the desired size.
13. Press the BREW button, the machine starts to work. The blue BREW light will illuminate. The Coffee Maker begins heating the water.
14. The pump will then activate and coffee will begin to stream through the nozzle.
15. To interrupt the brewing cycle at any time, press the BREW button. Wait for the remaining liquid to run out.
16. At the end of the cycle, the Coffee Maker enters standby mode.
17. Allow unit to cool before removing the used capsule to discard.
18. Unplug the Coffee Maker when not in use.
 - **CAUTION:** There are two sharp needles that puncture the capsules. One is located inside the capsule adaptor and the other is located on the top underside of the adapter compartment. To avoid risk of injury, DO NOT place fingers inside either parts. Also exercise caution when cleaning the parts.

MAKE A GROUND COFFEE

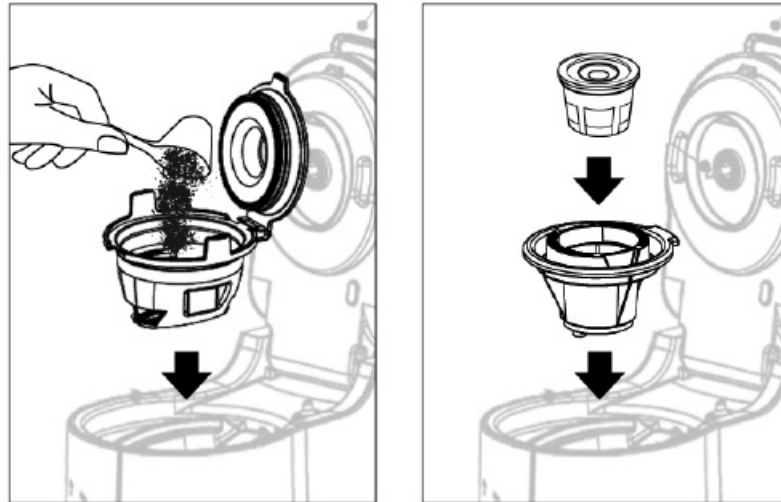
The ground coffee adaptor/reusable capsule allows you to create your own favorite blend of coffee. Personalize your blends by adding a dash of cinnamon, orange peel, cardamom, or vanilla bean for flavoring, to name a few options.

NOTE For best results, use medium ground coffee.

WARNING: Before brewing, it is recommended the water tank be filled at least to the MIN indicator line. To avoid damage to your Coffee Maker, never operate your Coffee Maker when the water tank is empty.

1. Grasp the removal water tank using the designated grips. Lift the water tank up and remove it from the base of the unit.
2. Remove the lid and fill the water tank to the MAX indicator line with cold water.
 - **NOTE:** Never fill the water tank past the MAX indicator line and ensure water level is above the MIN indicator line.
 - If the Add water Blue light on the control panel flashes, it indicates that there is no water in the water tank, please add room temperature water into the water tank, then re-start to work.
3. Put the lid back and put the water tank back into place.

4. Place down firmly to make sure it is securely in place.
5. Select the desired height for the drip tray, depending on the size of the cup, mug, or tumbler being used.
6. Place the empty cup, mug, or tumbler in position on the drip tray cover.
7. Choose the ground coffee adaptor/reusable capsule and fill it in with drip or regular grind coffee. It is recommended to use 1 tablespoon of ground coffee for each desired cup of coffee (1 cup = 5oz. of coffee). For stronger or milder coffee, adjust amount of coffee to suit your taste. DO NOT EXCEED the MAX fill line.
 - The reusable capsule needs to be used with capsule adapter.



8. Press the adaptor compartment's lid down firmly. An audible click can be heard as the lid is locked firmly into position.
9. Plug the Coffee Maker into a 120V AC electrical wall outlet.
10. Press the Power button, the product is powered on and the indicator light is on.
11. To select the brew size (10 oz., 12 oz., or 14 oz.), press the SIZE button until the Blue indicator light illuminates the desired size.
12. Press the BREW button, the machine starts to work. The blue BREW light will illuminate. The Coffee Maker begins heating the water.
13. When the water has reached the optimum temperature, the pump will then activate and coffee will begin to stream through the nozzle.
14. To interrupt the brewing cycle at any time, press the BREW button.
15. If there are more grounds in the basket, it will be about 10S of dripping time after finishing brewing, please wait for the remaining liquid to finish flowing.
16. At the end of the cycle, the Coffee Maker enter standby mode.
17. Allow unit to cool before removing the used coffee grinds to discard.
18. Unplug the Coffee Maker when not in use.

WARNING:

- To avoid risk of personal injury or damage to property, DO NOT remove mug from pod coffee maker until the light turns off indicating that the brew cycle is complete.
- DO NOT open the lid of the coffee maker during the brewing process, as hot water will continue to spray and may cause burns.

MAINTENANCE INSTRUCTIONS

USER MAINTENANCE INSTRUCTIONS

- This appliance requires little maintenance. It contains no user-serviceable parts. Any servicing requiring disassembly other than cleaning must be performed by a qualified appliance repair technician.

CARE & CLEANING INSTRUCTIONS

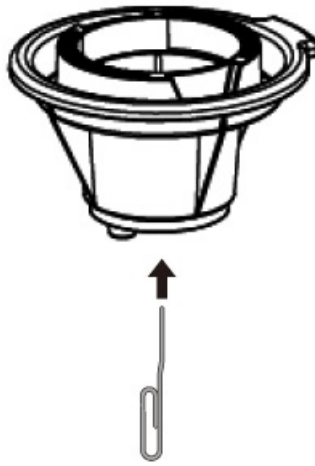
1. Always make sure Coffee Maker is unplugged and the drip tray and cover are cool before removing from the base.
2. Rinse drip tray and cover and replace in the Coffee Maker base.
3. Press the adaptor compartment's front lid to unlock and lift the lid.
4. Remove the used capsule from the capsule adaptor and discard. Rinse the capsule adaptor in warm water before each use.
5. When using the reusable ground coffee adaptor, discard the used coffee. Wash the adaptor in warm, soapy water, to remove all coffee grinds. Rinse well.
 - **NOTE** Both the capsule and the ground coffee adaptors are top rack dishwasher safe.
6. Use a damp sponge to completely remove any residue from the adaptor compartment.
7. Wipe the exterior of the Coffee Maker with a damp cloth to remove superficial stains. For stubborn stains, use a damp sponge with a non-abrasive cleanser. DO NOT use metal scouring pads or abrasive cleansers.

DESCALING INSTRUCTIONS

Special cleaning of your Coffee Maker is recommended at least twice a year, depending on frequency of use and quality of water used in the unit. If water in your area is especially hard, the following cleaning procedure should be performed more often, since minerals in water can detract from the flavor of the coffee and possibly lengthen brew time.

NOTE: If the CLEAN white light on the control panel flashes, it means must be cleaned.

1. Fill water tank with 1 part white vinegar to 3 parts cold water. DO NOT add any components. Place an empty tumbler in position on the drip tray cover.
2. Press and hold the SIZE Button and BREW button at the same time to start the product and start cleaning
3. The CLEAN white indicator is always on.
4. The heater will starts to heat up. After heating, it will be pre-soaked for a period of time and then the hot water will be pumped out to complete a cleaning procedure.
5. Repeat steps 3 to 5 until the water tank is empty.
6. Following the same procedure, continue to run clean water through the Coffee Maker three times.
7. Unplug the Coffee Maker when not in use.
8. Dry parts thoroughly. Wipe the Coffee Maker's exterior with a dry cloth.
9. During using, if the coffee cannot be delivered normally for a long time, check whether the water outlet and the capsule adaptor are blocked, and use a needle to clean the relevant blocked hole.
10. When cleaning, also check whether the pins on the water outlet and the capsule adaptor are clear. If there is blockage, use a needle to clean the corresponding blocked hole.



STORING INSTRUCTIONS

1. Unplug unit and allow to cool.
2. Never wrap cord tightly around the appliance. DO NOT put any stress on the cord where it enters the unit, as it could cause the cord to fray and break.
3. Store one clean adaptor in the Coffee Maker's adaptor compartment.
4. Store the other adaptor with the unit.
5. Store the Coffee Maker in a cool, dry place.
6. Never store unit while it is still plugged in.

TROUBLESHOOTING

There are grounds in my coffee.

- Grounds may have gathered in the exit or entrance needles and can be cleaned using a straightened paper clip or similar tool.
- Finely ground coffee can clog the filter basket. For best brewing results, use a medium-grind coffee.
- Using too many grounds can cause the filter basket to overflow. Once cooled, clean out the filter basket and refill using the appropriate amount of coffee.

Coffee maker lid won't stay on.

- The K-Cup was not poked by the pin at the bottom.
- The filter basket is not placed in the correct position.

Only water comes out.

- Ensure that the top and bottom needles have pierced the capsule.
- The exit needle may be clogged. Using a straightened paper clip or similar tool to clean the exit needle.
- Clean the Capsule Holder.
- The brewer may need to be descaled. If you have repeated the descale procedure on your brewer two times and it is still only brewing a partial cup, contact Customer Service at support@vimukun.com.




Brew basket overflowed.

- Check that the basket is in place with the lid secured. If the lid is in place, the bottom of the filter basket may be clogged.
- This can happen with finely ground coffee or too many coffee grounds in the filter holder.
- The exit needle may be clogged.
- Rinse the filter basket with water or use a straightened paper clip or similar tool to clean the exit needle.
 - **NOTE:** We recommend using medium-grind coffee.

Brew will not start.

- Plug the brewer into an electrical outlet of the appropriate voltage. If the circuit is overloaded, the brewer may not function properly.
- The brewer should be operated on its own circuit, separate from other appliances.
- Check to make sure there is water in the water reservoir.
- The brewer may need to run a cleaning cycle.
- For energy savings, the brewer automatically turns off 90 seconds after the last brew.
- Press the power button to restart.
- Press and hold the START, "SIZE" and "BREW" buttons at the bottom of the panel simultaneously to start the forced pumping program.
- If the brewer still doesn't have power, contact Customer Service at support@vi-mukun.com.
- Due to the special working principle of the coffee maker, it will extract a sufficient amount of water to be heated before brewing the coffee, which ensures the flavor of the coffee and also means that it takes longer to brew a cup of coffee (about 3 minutes).
- Brewing a partial cup.
- The exit needle may be clogged. Using a straightened paper clip or similar tool to clean the exit needle.
- Clean the Capsule Holder.
- The brewer may need to be descaled. If you have repeated the descale procedure on your brewer two times and it is still only brewing a partial cup, contact Customer Service at support@vimukun.com.


CUSTOMER SERVICE

-  **One year warranty**
 - Warranty scope: the quality of the product itself.
 - Generally excludes failures caused by improper use, man-made damage or natural disasters that are not caused by the product itself.
 - During the warranty period, you can enjoy free repair as well as return and exchange services.
 - If repair is not possible, we will provide a new replacement product
-  **Life-time technical support**
 - Online Customer Service is available hours a day, if you have any dissatisfaction with our products or services, please contact us, we will do our utmost to resolve it for you.
-  [**support@vimukun.com**](mailto:support@vimukun.com)
 - We sincerely thank you for your trust and support, and we will wholeheartedly provide you with the best

after-sales service.

- FOR HOUSEHOLD USE ONLY DO NOT IMMERSE IN ANY LIQUID
- CM9429D-UL

Documents / Resources

	<p>VIMUKUN CM9429D-UL Single Serve Coffee Maker [pdf] User Manual</p> <p>CM9429D-UL Single Serve Coffee Maker, CM9429D-UL, Single Serve Coffee Maker, Serve Coffee Maker, Coffee Maker, Maker</p>
---	---

References

- [User Manual](#)