

---

# Vimtag FI-362C Security Camera User Guide

August 5,  
2025



## Contents [ [hide](#) ]

### 1 Security Camera

#### 1.1 Quick Guide

##### 1.1.1 01/ what's in The Box

##### 1.1.2 02/ Product Appearance

##### 1.1.3 03/ install App

##### 1.1.4 04/ Register Account

##### 1.1.5 05/ Add Camera by Bluetooth

##### 1.1.6 05/ Add Camera by QR Code

##### 1.1.7 06/ Install The Camera (optional)

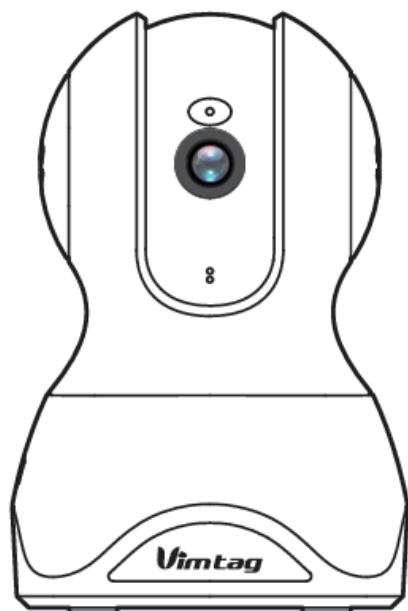
##### 1.1.8 Warranty

##### 1.1.8.1 FCC Statement

### 2 Documents / Resources

#### 2.1 References

## Security Camera

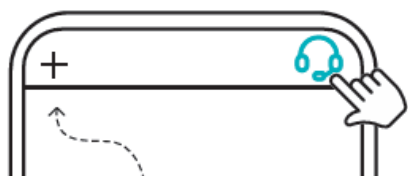


**Need Help? Email Us:**

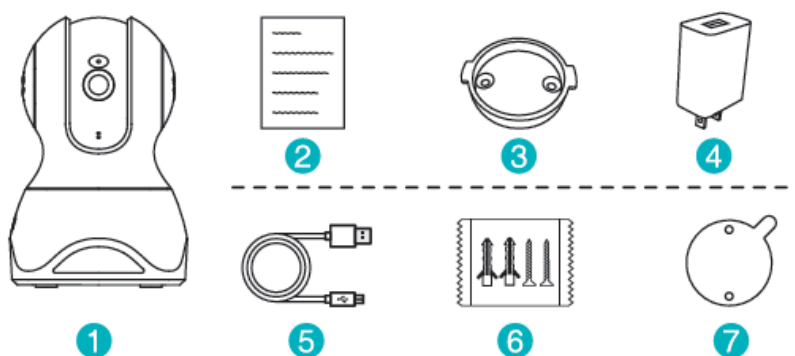
 [customer@vimtag.com](mailto:customer@vimtag.com)

**OR**

**Contact Us in the APP:**



## **01/ what's in The Box**



**(1)** Camera

**(2)** Quick Guide

**(3)** Bracket

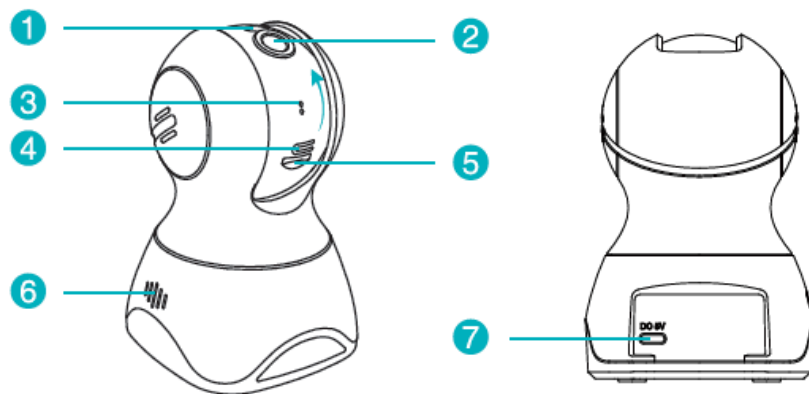
(4) Power Adapter

(5) Power Cable

(6) Screw Kit

(7) Positional Sticker

## 02/ Product Appearance



(1) IR LED

(2) Lens


(3) Microphone

(4) Reset Button

(5) Micro SD Card Slot

(6) Speaker

(7) USB Power Port

If you encounter any issues, please contact us through the  in the app or [customer@vimtag.com](mailto:customer@vimtag.com) for resolution.

## 03/ install App

Download Vimtag APP in:

OR [vimtag.com/download](http://vimtag.com/download)

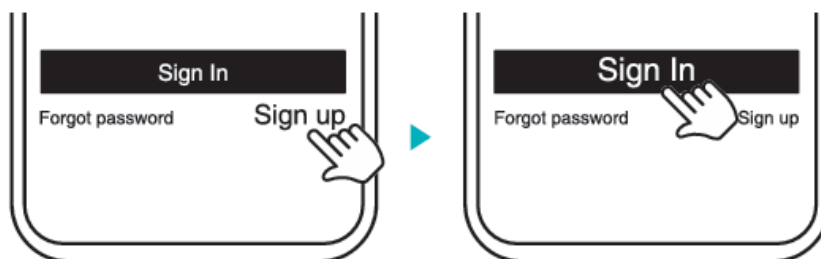



OR

OR From APP Store(iOS) or Play Store(Android).

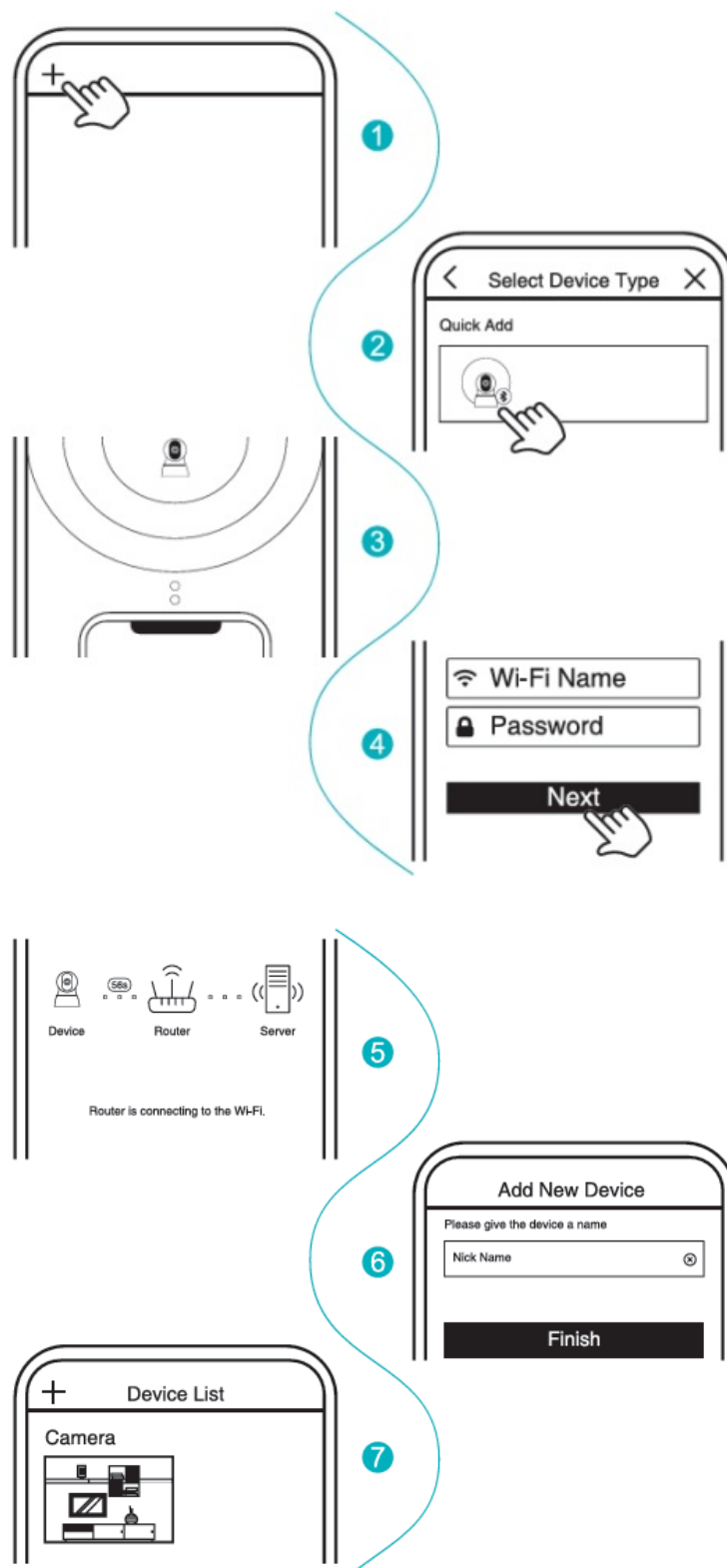
#### 04/ Register Account


Open '**Vimtag**' APP, click the '**Sign up**' button, register an account then '**Sign In**' .



If you are unable to register or log in, please contact us through the  in the app or [customer@vimtag.com](mailto:customer@vimtag.com) for resolution.

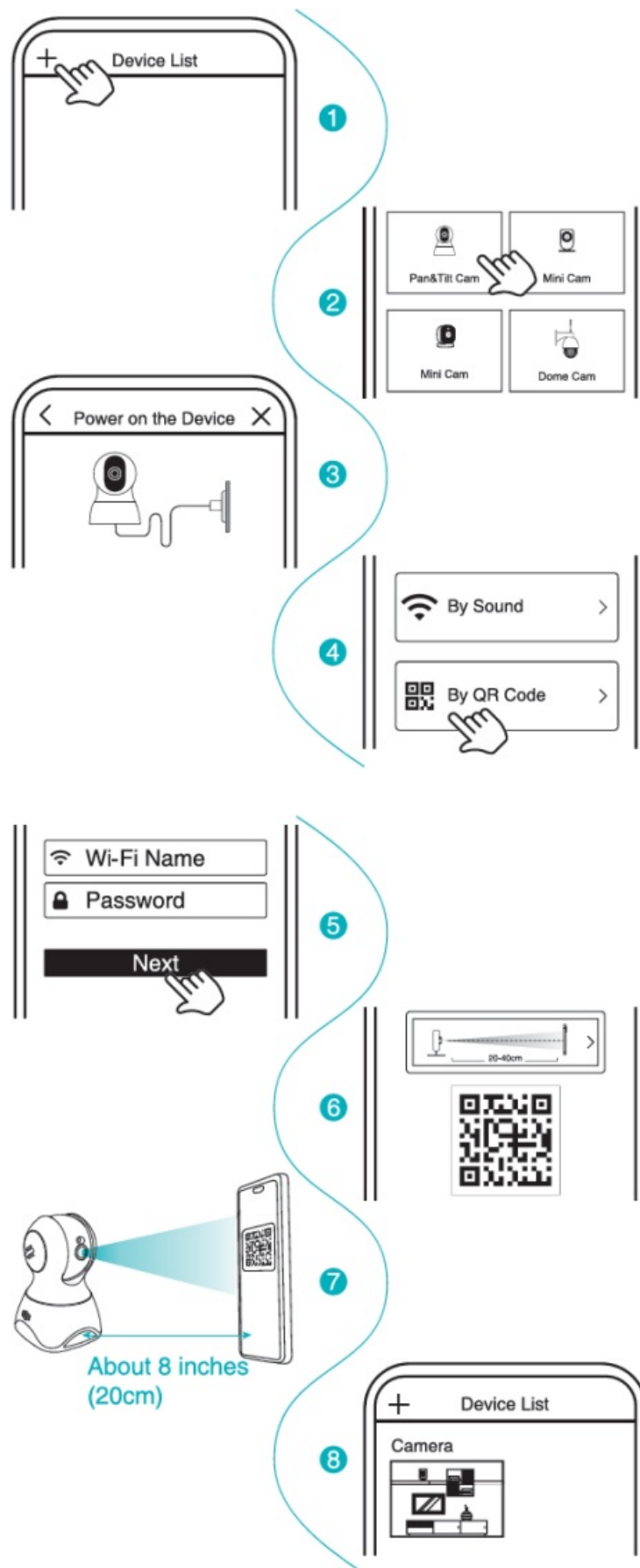
#### 05/ Add Camera by Bluetooth




If you are unable to add a camera, please contact us through the  in the app or [customer@vimtag.com](mailto:customer@vimtag.com) for resolution.

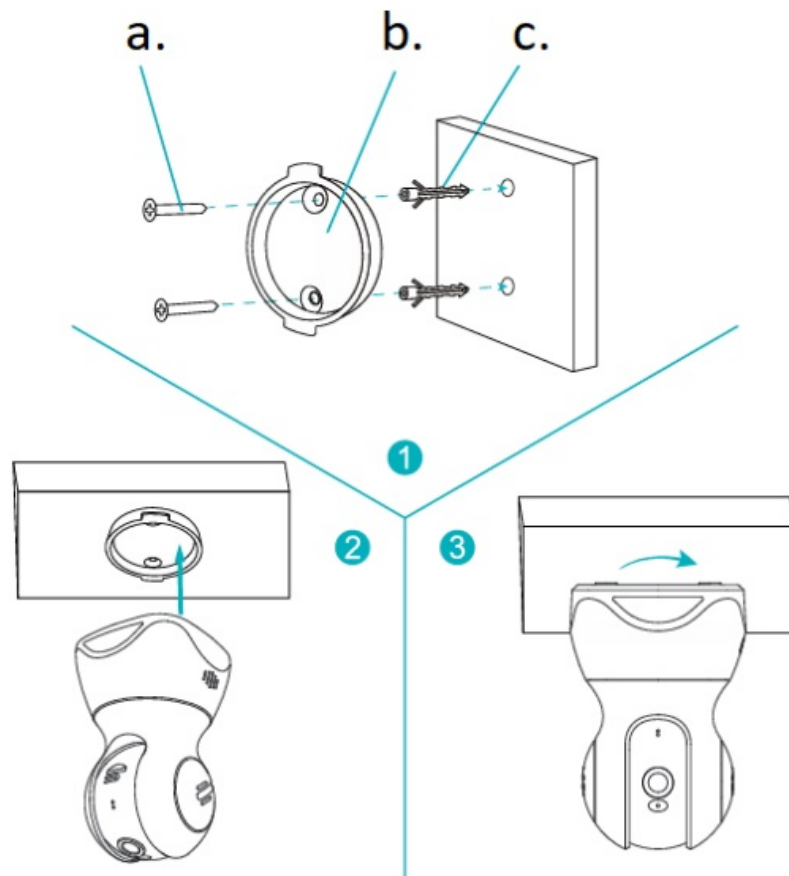
When the device does not support Bluetooth connection or when the Bluetooth connection fails, you can add the camera by scanning the QR code.

## 05/ Add Camera by QR Code



If you are unable to add a camera, please contact us through the  in the app or [customer@vimtag.com](mailto:customer@vimtag.com) for resolution.

## 06/ Install The Camera (optional)



- a. Mounting Screws
- b. Bracket
- c. Plastic Expansion Pipe

**Note:** When camera installed vertically on the ceiling, please flip the screen in the APP



## Warranty

**Dear users,**

Thank you for using our products, in order to offer the perfect after-sales services, please read the description of the product warranty card after purchasing and preserve it properly.

1. Enjoy the free warranty in the warranty period and preferential services outside the warranty period.
2. The following situations are not in the free maintenance range, we only provide paid

services, please pay attention:

- Failure to follow the operation manual requires for installation, application, maintenance and custody leading to products failure or damage;
  - Already out of warranty period;
  - Disassemble unauthorized repair;
  - The products damage caused by the unexpected factors or human behaviors, such as improper input voltage, high temperature, water, mechanical damage, and severe oxidation or rust;
  - Due to the fore majeure such as earthquakes, fires, floods, lightning strikes leading to the products failure or damage.
3. The final interpretation and modify right in the warranty card belongs to our company.
  4. You can activate the 'electronic warranty card' or apply for an extended warranty period.

#### **FCC Statement**

Changes or modifications not expressly approved by the party responsible for compliance could void the user's authority to operate the equipment.

This equipment has been tested and found to comply with the limits for a Class B digital device, pursuant to Part 15 of the FCC Rules. These limits are designed to provide reasonable protection against harmful interference in a residential installation. This equipment generates uses and can radiate radio frequency energy and, if not installed and used in accordance with the instructions, may cause harmful interference to radio communications. However, there is no guarantee that interference will not occur in a particular installation. If this equipment does cause harmful interference to radio or television reception, which can be determined by turning the equipment off and on, the user is encouraged to try to correct the interference by one or more of the following measures:

- Reorient or relocate the receiving antenna.
- Increase the separation between the equipment and receiver.
- Connect the equipment into an outlet on a circuit different from that to which the receiver is connected.
- Consult the dealer or an experienced radio/TV technician for help



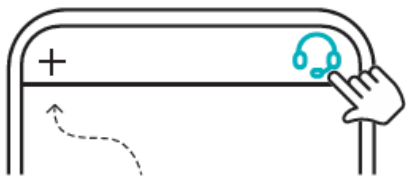
This device complies with part 15 of the FCC rules.  
Operation is subject to the following two conditions  
(1) this device may not cause harmful interference, and  
(2) this device must accept any interference received, including interference that may cause undesired operation.

**Need Help? Email Us:**

 [customer@vimtag.com](mailto:customer@vimtag.com)


**OR**

**Contact Us in the APP:**



V1.0

## Documents / Resources

	<p><a href="#">Vimtag FI-362C Security Camera [pdf]</a> User Guide</p> <p>FI-362C, FI-362C Security Camera, Security Camera, Camera</p>
---	---

## References

- [User Manual](#)

 camera, FI-362C, FI-362C Security Camera, Security Camera,

# Leave a comment

Your email address will not be published. Required fields are marked \*

Comment \*

Name

Email

Website

☐ Save my name, email, and website in this browser for the next time I comment.

**Post Comment**

**Search:**

e.g. whirlpool wrf535swhz

**Search**

[Manuals+](#) | [Upload](#) | [Deep Search](#) | [Privacy Policy](#) | [@manuals.plus](#) | [YouTube](#)

This website is an independent publication and is neither affiliated with nor endorsed by any of the trademark owners. The "Bluetooth®" word mark and logos are registered trademarks owned by Bluetooth SIG, Inc. The "Wi-Fi®" word mark and logos are registered trademarks owned by the Wi-Fi Alliance. Any use of these marks on this website does not imply any affiliation with or endorsement.