

VIMIN
8 Port 2.5G
Web
Managed
Ethernet
Switch



VIMIN 8 Port 2.5G Web Managed Ethernet Switch User Manual

[Home](#) » [VIMIN](#) » VIMIN 8 Port 2.5G Web Managed Ethernet Switch User Manual 

Contents

- [1 VIMIN 8 Port 2.5G Web Managed Ethernet Switch](#)
- [2 Product Information](#)
- [3 Product Usage Instructions](#)
- [4 The Steps of Updating the Firmware](#)
- [5 Documents / Resources](#)
 - [5.1 References](#)
- [6 Related Posts](#)

VIMIN

VIMIN 8 Port 2.5G Web Managed Ethernet Switch



Product Information

Specifications

- **Product Name:** Switch Firmware Update Tool
- **Compatibility:** Works with all models of XYZ switches
- **Version:** 2.0
- **Manufacturer:** XYZ Inc.

Product Usage Instructions

Updating the Firmware

Log in to the switch and navigate to Tools -> Firmware Update -> Enter Loader Mode.

(Refer to the screenshot below for visual guidance)

1. After entering Download Mode, click on HTTP Firmware Upgrade.
2. Select the corresponding firmware file.
3. Click on Upgrade and confirm the upgrade.
4. Wait for 1 minute after clicking Upgrade.
5. Refresh your browser. The switch's firmware version will now be successfully upgraded.

Note:

Do not power off or restart the switch during the upgrade process as it may result in chip damage.

Frequently Asked Questions (FAQ)

- **Q: Can I interrupt the firmware upgrade process?**

A: It is highly recommended not to interrupt the firmware upgrade process as it may lead to chip damage and

render the switch unusable. Please ensure a stable power supply during the upgrade.

- **Q: How can I check the current firmware version of my switch?**

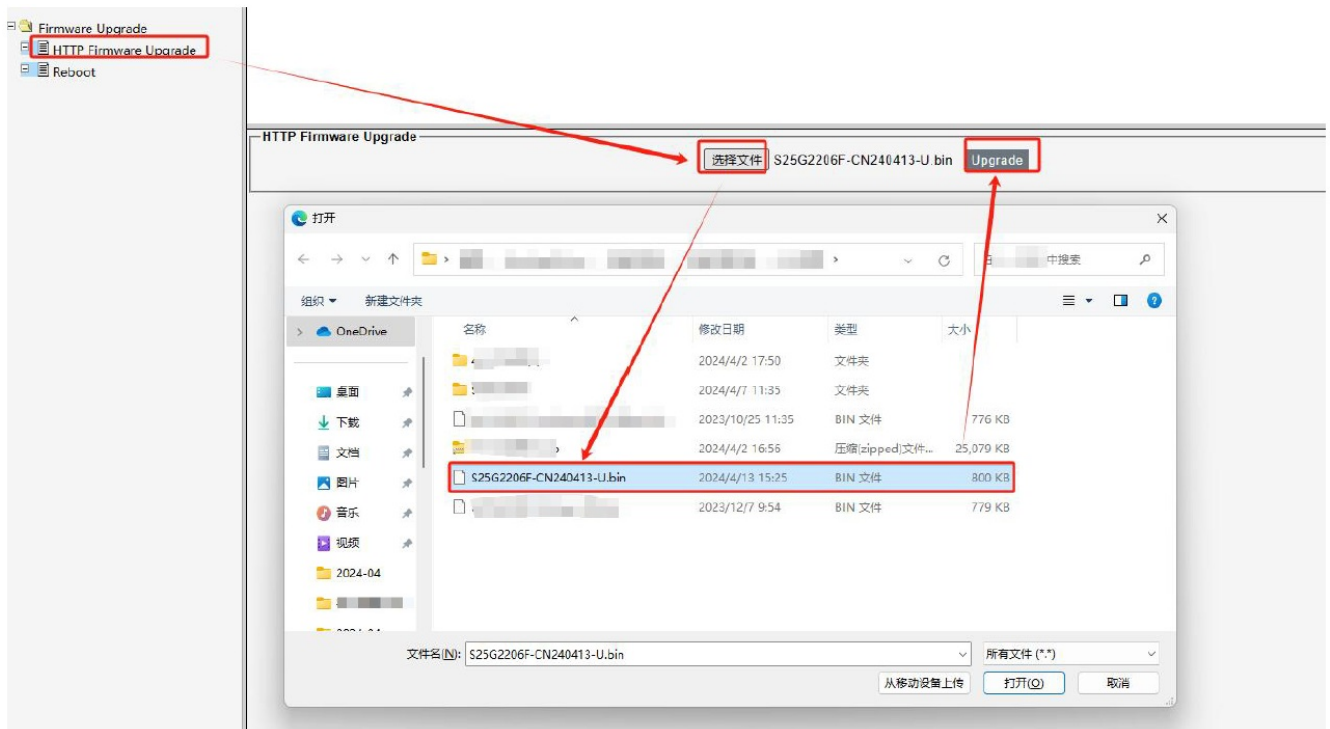
A: You can check the current firmware version by logging into the switch's interface and navigating to System Settings or Firmware Information.

The Steps of Updating the Firmware

1. Log in to the switch and navigate to Tools -> Firmware Update -> Enter Loader Mode, as shown in the screenshot below



2. After entering Download Mode, click on HTTP Firmware Upgrade -> Select the corresponding firmware -> Upgrade -> Confirm the upgrade.






3. After clicking Upgrade, wait for 1 minute and then refresh your browser. At this point, the switch's firmware version will have been successfully upgraded.

Note!

After the upgrade process is complete, the switch will automatically restart. DO NOT power off or restart the switch during the upgrade process, as it may result in chip damage and render the switch unusable

Documents / Resources

	<p>VIMIN 8 Port 2.5G Web Managed Ethernet Switch [pdf] User Manual</p> <p>8 Port 2.5G Web Managed Ethernet Switch, 8 Port, 2.5G Web Managed Ethernet Switch, Managed Ethernet Switch, Ethernet Switch, Switch</p>
--	---

References

- [User Manual](#)

[Manuals+](#), [Privacy Policy](#)

This website is an independent publication and is neither affiliated with nor endorsed by any of the trademark owners. The "Bluetooth®" word mark and logos are registered trademarks owned by Bluetooth SIG, Inc. The "Wi-Fi®" word mark and logos are registered trademarks owned by the Wi-Fi Alliance. Any use of these marks on this website does not imply any affiliation with or endorsement.