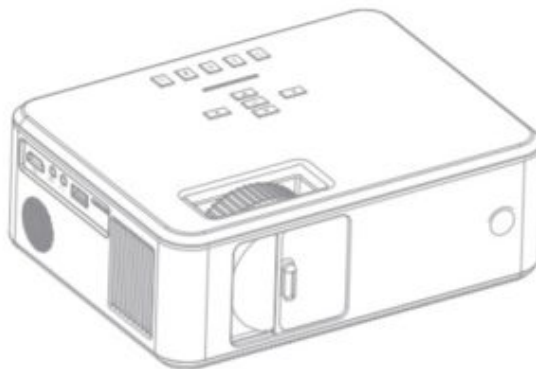




## VIMGO Venus X2 Native 1080P Projector User Manual

[Home](#) » [VIMGO](#) » VIMGO Venus X2 Native 1080P Projector User Manual 

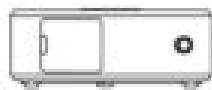


Please read this manual thoroughly before using this product and keep it for future reference.

## Contents

- 1 WHAT'S INCLUDED
- 2 PRODUCT OVERVIEW
- 3 QUICKSTART
- 4 INPUT SOURCE
- 5 PROJECTOR CONNECTIONS
- 6 SCREEN MIRRORING
- 7 Starting Screen Mirroring
- 8 OTHER SETTINGS
- 9 PROJECTION  
DISTANCE&SIZE
- 10 SPECIFICATION
- 11 TROUBLESHOOTING GUIDE
- 12 FCC Statement
- 13 ISEDC Warning
- 14 Documents / Resources
- 15 Related Posts

## WHAT'S INCLUDED



VENUS X2 Projector



Remote  
(Batteries Not Included)



User Manual



1 to 3 AV Cable



Adjustable Foot

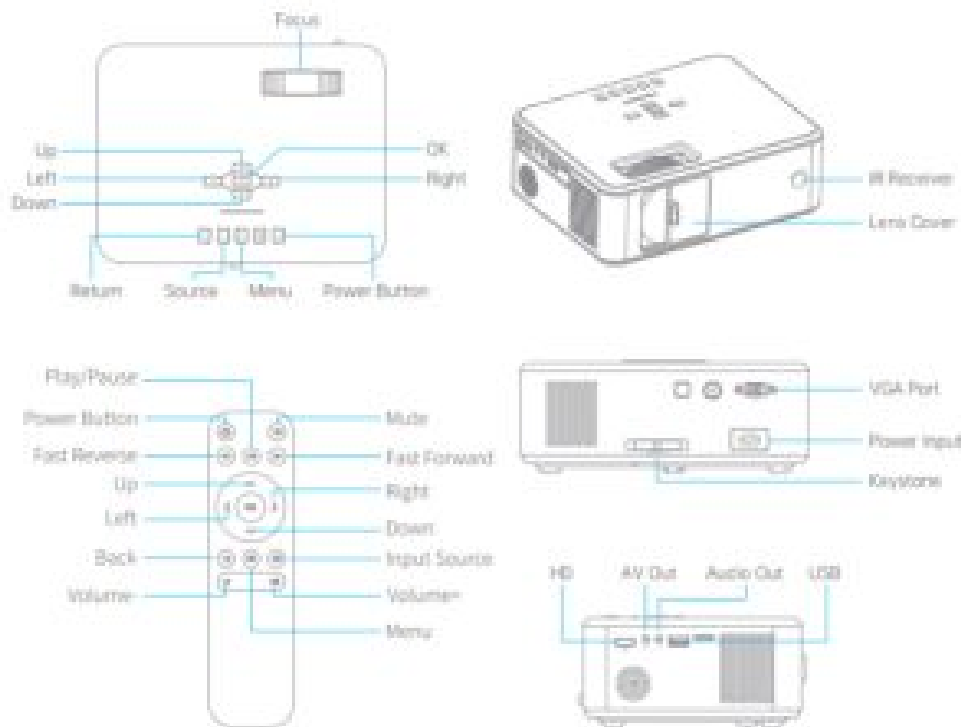


HD Cable

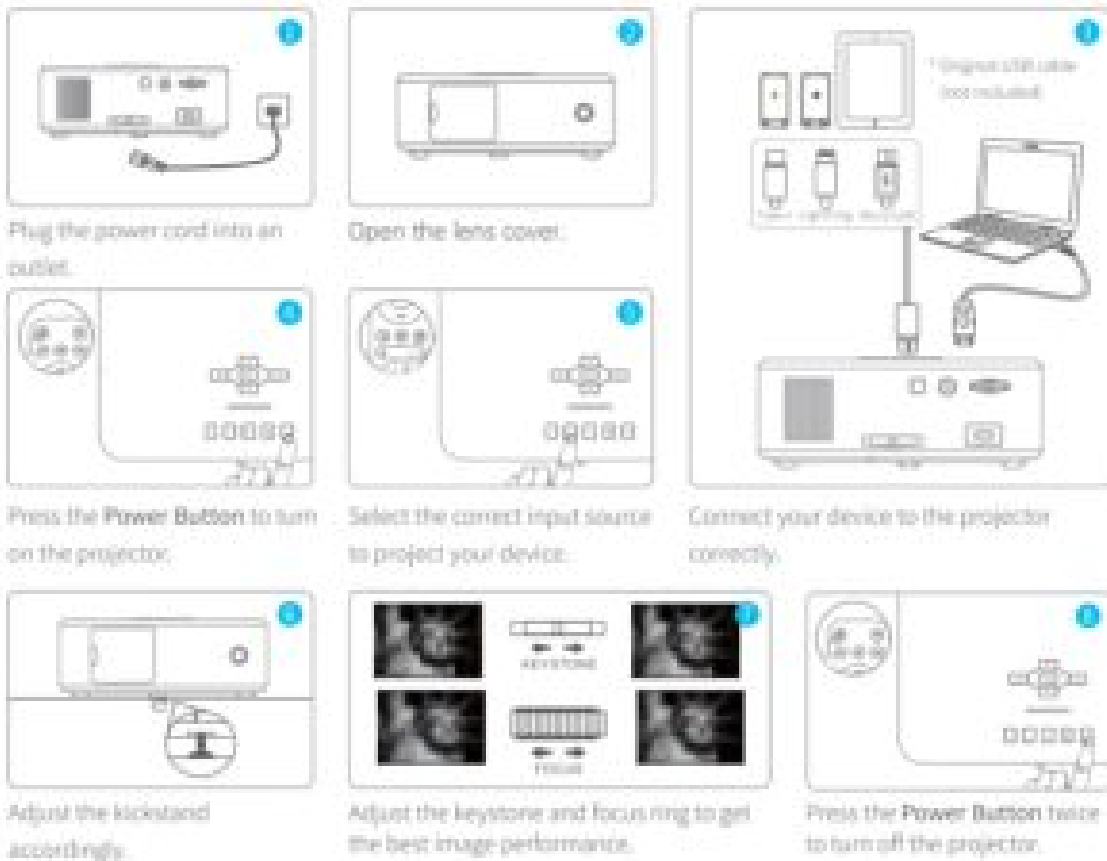


Power Cable


## PRODUCT OVERVIEW

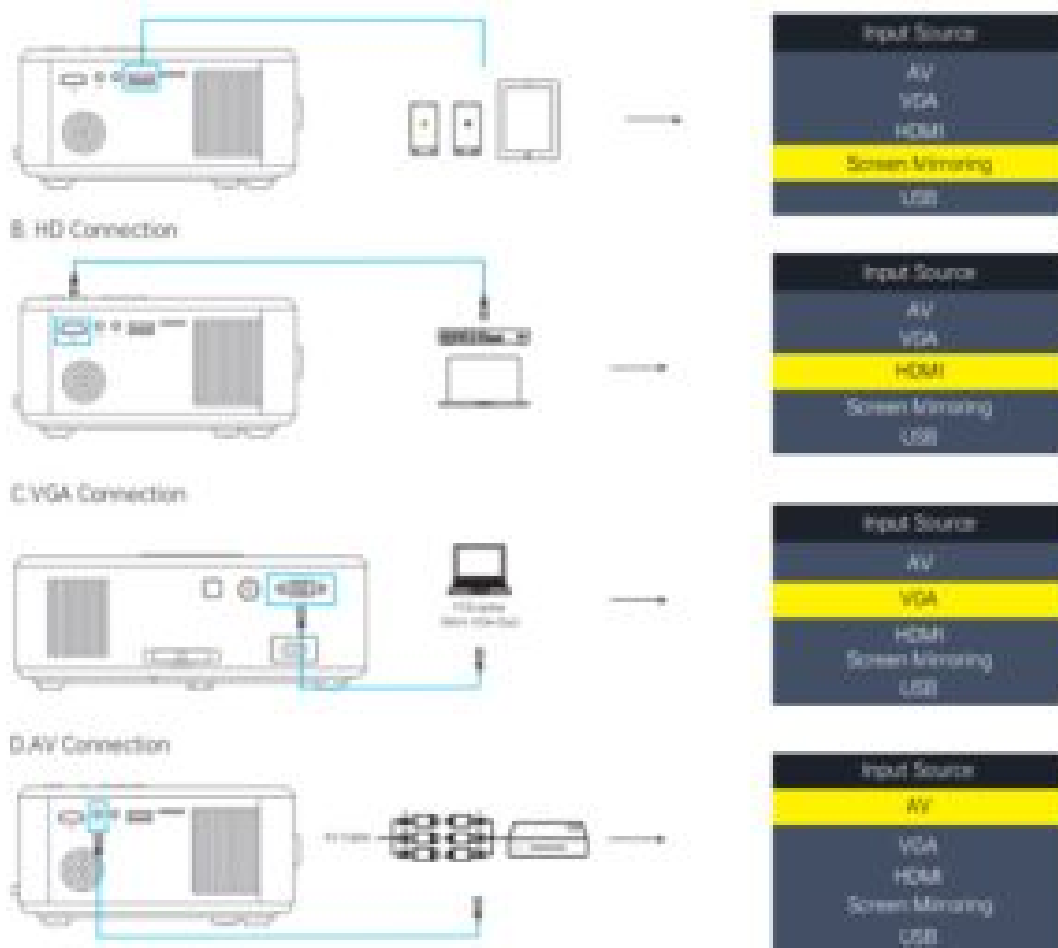


## QUICKSTART

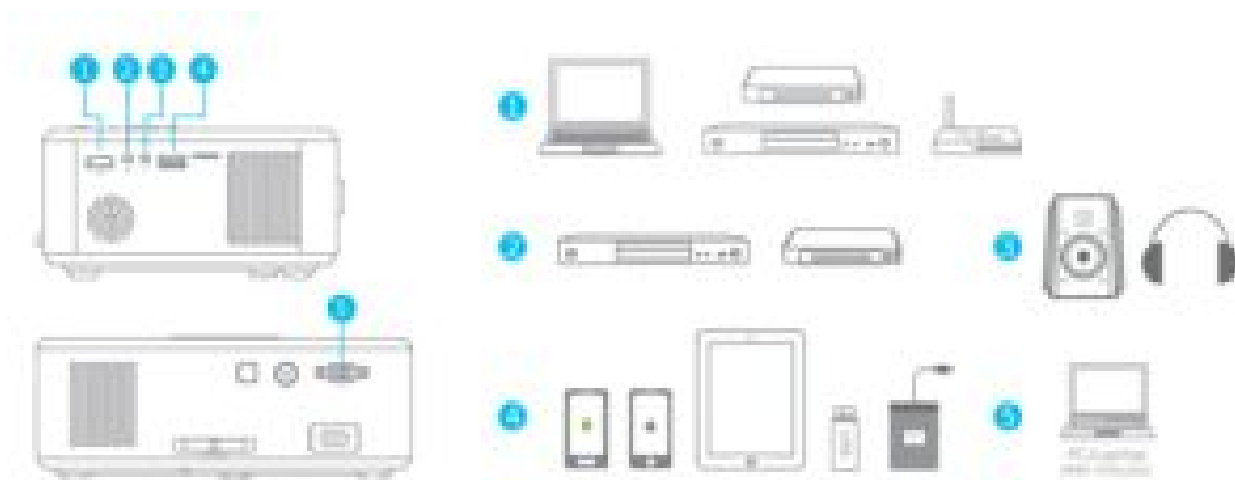


## INPUT SOURCE

Press button "S" /  on the projector/remote to enter the interface of Input Source  
A.Screen Mirror




## PROJECTOR CONNECTIONS



## SCREEN MIRRORING

Know System Settings before Screen Mirroring

**Step 1:** Press button “S” on the projector or press  on the remote to enter the Input Source interface, then select Screen Mirroring.


**Step 2:** In the interface of Screen Mirroring, press OK to enter the WiFi Selection interface.



**Note:** To enter the WiFi Selection interface, please press OK in the interface of Screen Mirroring.

## Starting Screen Mirroring

### Important:

Before screen mirroring, please press the button “S” on the projector or press  on the remote to enter the Input Source interface and select Screen Mirroring.



### Screen Mirroring through Wireless Connection

#### For iOS system

\* Screen Mirroring via Router's WiFi

1. Turn on the projector, select Screen Mirroring as the input source to enter the Screen Mirroring Interface.



2. Press OK to enter the WiFi selection interface and connect the projector to your router's WiFi with the correct password.
3. The WiFi icon on the interface will change from  to , and the router's WiFi will be displayed on the interface of Screen Mirroring after a successful connection.



4. Get back to the WiFi setting of your iOS mobile device, then connect it to the SAME router's WiFi.
5. Activate Screen Mirroring/Airplay Mirroring on your iOS mobile device and search for the projector, then select X2-785F3E from the searching results to connect.



6. The content on your iOS mobile device will be mirrored to the wall/screen after WiFi connection.



**Tip:**

1. If you'd like to connect another router's WiFi, please press OK in the Screen Mirroring Interface, then repeat the procedures mentioned in the section of Screen Mirroring via Router's WiFi.
2. If you already connected your projector with the WiFi and now you want to connect it with iOS device cellular data. please go to the WiFi Selection Interface, disconnect the current WiFi connection then follow the steps in the section of Screen Mirroring via Cellular Data.

**\* Screen Mirroring via Cellular Data**

1. Turn on the projector, select Screen Mirroring as the input source to enter the interface of Screen Mirroring.



2. Go to the settings of your iOS mobile device and connect it to the WiFi of X2-785F3E (password: 12345678).
3. Activate Screen Mirroring/Airplay Mirroring on your iOS mobile device and search for the projector.
4. Select X2-785F3E from the searching results to connect.
5. The content on your iOS mobile device will be mirrored to the wall/screen via cellular data after a successful connection.

### **For Android System**

To activate this function, your Android device must support a Multi-Screen/Wireless display. Names may differ from different devices.

1. Turn on the projector, select Screen Mirroring as the input source to enter the interface of Screen Mirroring.
2. Turn ON the WiFi switch in your Android device.

**Note:** Successful WiFi connection is not a must, but please make sure the WiFi switch is on.

3. Activate Multi-Screen on your mobile device and search for the projector.
4. Select X2-785F3E from the searching results to connect.
5. The content on your iOS mobile device will be mirrored to the wall/screen after a successful connection.

### **For Windows 10 System**

To activate this function, your Windows 10 device must support the Miracast feature.

1. Turn on the projector, select Screen Mirroring as the input source to enter the interface of Screen Mirroring.
2. Turn ON the WiFi switch on your Windows 10 device.

**Note:** Successful WiFi connection is not a must, but please make sure the WiFi switch is on.

3. Press the “Windows Logo +P” key combination on your keyboard to enter the PROJECT interface, then select “Connect to a wireless display” to search the projector.
4. Select X2-785F3E from the searching results to connect.
5. The content on you Windows 10 device will be mirrored to the wall/screen after a successful connection.

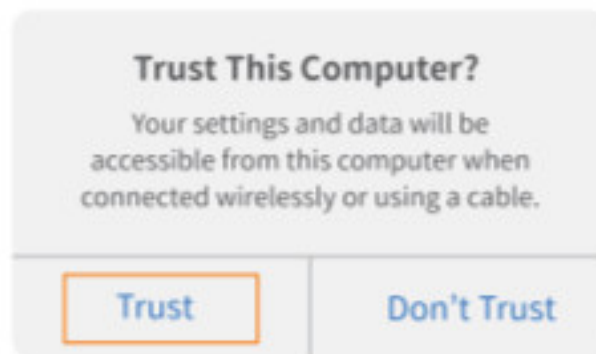
### **Notes:**

1. The fluency of screen mirroring will be affected by the network environment. A bandwidth of 100Mbit or more is recommended when using screen mirroring.
2. Make sure your mobile device is close to the projector when using a wireless connection. A distance within 3ft is recommended.

3. Some mobile devices may not support screen mirroring due to compatibility.
4. Due to the copyright restriction from Hulu, Netflix, and similar services, the contents CAN NOT be mirrored or cast.
5. If the projected image freezes, please reboot the projector or press OK in the Screen Mirroring Interface to go to the WiFi Selection Interface and disconnect the current WiFi connection, and re-connect the Home WiFi.

### **Screen Mirroring through Wired Connection For iOS System**

1. Turn on the projector, select Screen Mirroring as the input source to enter the interface of Screen Mirroring.
2. Connect your iOS mobile device to the USB port of the projector with the ORIGINAL lightning cable.
3. Select Trust in the popup window of Trust This Computer?.



4. The display of your iOS mobile device will be mirrored to the wall/screen after a while.



#### **Tip:**

if the projection fails, please unplug the lightning cable from the projector or reboot the projector, then repeat the steps mentioned above.

### **For Android System**

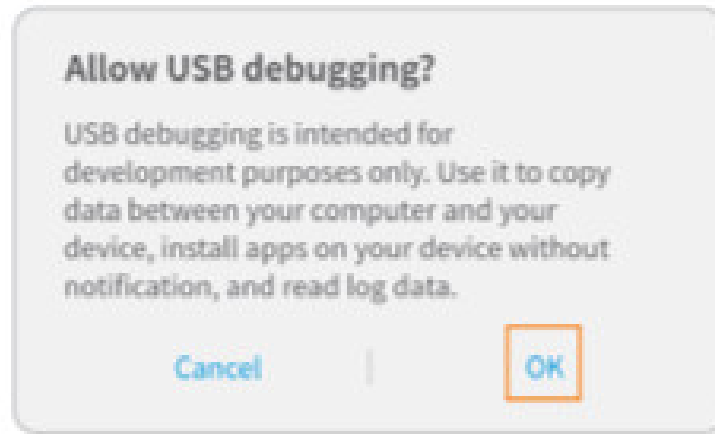
1. Turn on the projector, select Screen Mirroring as the input source to enter the interface of Screen Mirroring
2. Go to the settings of your mobile device. find Developer options and turn on USB debugging.

#### **Tip:**

The steps to turn on Developer options vary from different models of Android devices. You may check it from the Internet or contact us for the detailed steps. We take Samsung Galaxy S8+ as an example.

- Go to settings of your Android device, then tap About phone > Software information > Build number.
  - Continuously tap on Build number several times until it shows Developer mode had been turned on.
  - Get back to the settings of your mobile device, it will show Developer options.
3. Connect your Android mobile device to the USB port of the projector with the ORIGINAL USB cable.
  4. Tap OK when your Android mobile device pops out the window of Allow USE debugging?, then the display of your Android mobile device will be mirrored to the wall/screen after a while.






#### Notes:

1. The USB cable MUST be the ORIGINAL cable or the cable which can transfer data, otherwise, screen mirroring may fail. YOU can plug the cable into your laptop to check the availability of transferring data.
2. Some mobile devices may not support screen mirroring due to compatibility.
3. Some Android mobile devices may only transfer the display without audio due to protocol restrictions.

#### OTHER SETTINGS

Press  on the remote in any interface to access the settings options shown below.



Set Picture Mode, Color Temperature, Aspect Ratio, Projection Model, and Reduce Display Size.



Adjust Sound Mode and turn on/off Surround Sound.

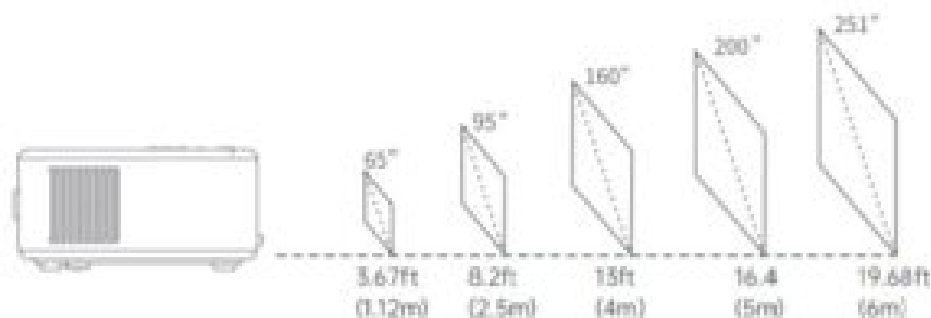


Set a time duration for the projector to shut down automatically.



Access Language to change the language of the projector, OSD Time to adjust the duration for menu viewing, Software Update for the projector, and Restore Factory Default to do a reset for the projector.

#### PROJECTION DISTANCE&SIZE



\* The recommended projection distance varies with different projection contents. Please adjust the distance between the wall/screen and the projector properly as needed.

\*Ambient darkness will improve the clarity of the projected images.

#### SPECIFICATION

Display Technology	LCD	Light Source	LED
Resolution	Native 1920*1080	Input Signal	576i, 720P, 1080i, 1080P
Installation Type	Front/Rear/Ceiling	Aspect Ratio	16:9/4:3/Auto
Focus	Manual	Keystone	±15°
Speaker	3W/4ohm	Power Supply	AC 100-240V, 50/60Hz
Unit Dimension	215 x 163 x 78mm	Unit Net Weight	1 kg
Photo Format Supported	JPEG/BMP/PNG	Audio Format Supported	MP3/WMA/OGG/AAC/FLAC/APE/WAV
Video Format Supported	3GP(H.263,MPEG4)/AVI(XVID, DIVX,H.264)/MKV(XVID,H.264, DIVX)/FLV(FLV)/MOV(H.234)/MP4(PEG4,AVC)/MPG(MPEG1)/V0B(MPEG2)/MPG(MPG-PS)/RMVB(RV40)/RM	Ports	USB Port x1 HD in x1 AV in x1 Audio Out x1

## TROUBLESHOOTING GUIDE

### 1. The content from Hulu, Netflix, and similar services can not be mirrored or cast?

\* Due to the copyright restriction from Hulu, Netflix, and similar services, the contents CAN NOT be mirrored or cast.

### 2. What should I do if I want to watch the content from Hulu, Netflix, and similar services via the projector?

\* Please prepare a Fire TV stick, Roku stick, or Chromecast™ (not included), then connect it to the HD port of the projector to watch the content.

### 3. Blurry Image

- \* Adjust focus ring/keystone.
- \* Projector and screen/wall must be in effective distance.

### 4. Remote Unresponsive

- \* Make sure remote points at IR receiver directly and the IR receiver doesn't be covered.
- \* Try a new pair of AAA batteries.

### 5. Upside Down Images

\* Press  on the remote in any interface, then go to  > Projection Mode to flip the projection image.

### 6. Factory Reset

\* Reset the projector to the factory settings Press  on the remote in any interface, then go to  > Restore Factory Default to do a reset.

### 7. USB Port

\* USB Port is designed for Screen Mirroring through Wired Connection.

## FCC Statement

Any changes or modifications not expressly approved by the party responsible for compliance could void the user's authority to operate the equipment. This device complies with part 15 of the FCC Rules. Operation is subject to the following two conditions:

1. This device may not cause harmful interference, and
2. this device must accept any interference received, including interference that may cause undesired operation.

**NOTE:** This equipment has been tested and found to comply with the limits for a Class B digital device, pursuant to part 15 of the FCC Rules. These limits are designed to provide reasonable protection against harmful interference in a residential installation. This equipment generates, uses, and can radiate radio frequency energy and, if not installed and used in accordance with the instructions, may cause harmful interference to radio communications. However, there is no guarantee that interference will not occur in a particular installation. If this equipment does cause harmful interference to radio or television reception, which can be determined by turning the equipment off and on, the user is encouraged to try to correct the interference by one or more of the following measures:

- Reorient or relocate the receiving antenna.
- Increase the separation between the equipment and receiver.
- Connect the equipment into an outlet on a circuit different from that to which the receiver is connected.
- Consult the dealer or an experienced radio/TV technician for help.

This equipment complies with FCC radiation exposure limits set forth for an uncontrolled environment. This equipment should be installed and operated with a minimum distance of 20cm between the radiator & your body. This transmitter must not be co-located or operating in conjunction with any other antenna or transmitter.

## ISED Warning

This device complies with Industry Canada licence-exempt RSS standard(s). Operation is subject to the following two conditions:

1. this device may not cause interference, and
2. this device must accept any interference, including interference that may cause undesired operation of the device.

The device is in compliance with RF exposure guidelines, users can obtain Canadian information on RF exposure and compliance. The minimum distance from the body to use the device is 20cm.

Operation of this device in the band 5150-5250 MHz is restricted to indoor use only. Le fonctionnement de cet appareil dans la bande 5150-5250 MHz est limitE a une utilisation?den interieur uniquement.

### CAUTION

To avoid the replacement of a battery with an incorrect type. Don't dispose of a battery into fire or a hot oven, or mechanically crush or cut a Battery. Don't leave a battery in an extremely high-temperature surrounding environment. To avoid battery subjected to extremely low air pressure. The mains plug is used as the disconnect device, the disconnect device shall remain readily operable.



The symbol indicates for indoor use only



The symbol indicates DC voltage



The symbol indicates AC voltage



## RECYCLING

This product bears the selective sorting symbol for waste electrical and electronic equipment (WEEE).

This means that this product must be handled pursuant to European directive 2012/19/EU in order to be recycled or dismantled to minimize its impact on the environment. The user has the choice to give this product to a competent recycling organization or the retailer when he buys new electrical or electronic equipment.

This product can be used across EU member states.

The mains plug is used as the disconnect device, the disconnect device shall remain readily operable.




BE	BG	CZ	DK	DE	EE	IE	EL
ES	FR	HR	IT	CY	LV	LT	LU
HU	MT	NL	AT	PL	PT	RO	SI
SK	FI	SE	NO	IS	LI	CH	TR

In all EU member states, the operation of 5150-5250 MHz is restricted to indoor use only.

[support@ivimgo.com](mailto:support@ivimgo.com)

## Documents / Resources

	<p><a href="#">VIMGO Venus X2 Native 1080P Projector</a> [pdf] User Manual X2, 2AS7X-X2, 2AS7XX2, Venus X2 Native 1080P Projector</p>
-------------------------------------------------------------------------------------	-------------------------------------------------------------------------------------------------------------------------------------------