



VIMAR
19467
Connected
NFC/RFID
Switch
Grey



VIMAR 19467 Connected NFC/RFID Switch Grey Instruction Manual

[Home](#) » [VIMAR](#) » VIMAR 19467 Connected NFC/RFID Switch Grey Instruction Manual 

Contents

- [1 VIMAR 19467 Connected NFC/RFID Switch Grey](#)
- [2 Product Usage Instructions](#)
- [3 Frequently Asked Questions](#)
- [4 FRONT VIEW AND CONNECTIONS](#)
- [5 INSTALLATION](#)
- [6 FEATURES](#)
- [7 CONTROLLABLE LOADS](#)
- [8 INSTALLATION RULES](#)
- [9 Documents / Resources](#)
 - [9.1 References](#)



VIMAR

VIMAR 19467 Connected NFC/RFID Switch Grey



Product Specifications:

- **Power Supply:** 100-240 V~, 50/60 Hz
- **Power Consumption:** 1.1 W
- **RFID Frequency:** 13.56 MHz
- **Operating Frequency:** 13,553-13,567 MHz
- **Sound Level:** < 60 dBA/m
- **IP Rating:** IP20
- **Wireless Frequency:** 2400-2483.5 MHz
- **Wireless Power:** < 100 mW (20 dBm)
- **Max Current:** 16 A (3.5 A for relay output)
- **Max Power:** 100 W – 240 V~, 30 W – 120 V~

Product Usage Instructions

Installation:

1. Ensure the power supply matches the product requirements.
2. Mount the device in a location with good wireless signal reception.
3. Connect the necessary wires following the provided wiring diagram.
4. Securely fasten the device in place.

Configuration:

1. Press the configuration button to enter setup mode.
2. Follow the user manual instructions for configuring settings.
3. Test the device to ensure proper functionality.

Usage:

Once installed and configured, the device can be used to control various functions wirelessly via a compatible smartphone or tablet.

Frequently Asked Questions

Q: How do I reset the device to factory settings?

A: To reset the device, press and hold the configuration button for 10 seconds until the LED indicator flashes rapidly.

Q: What should I do if the wireless connection is unstable?

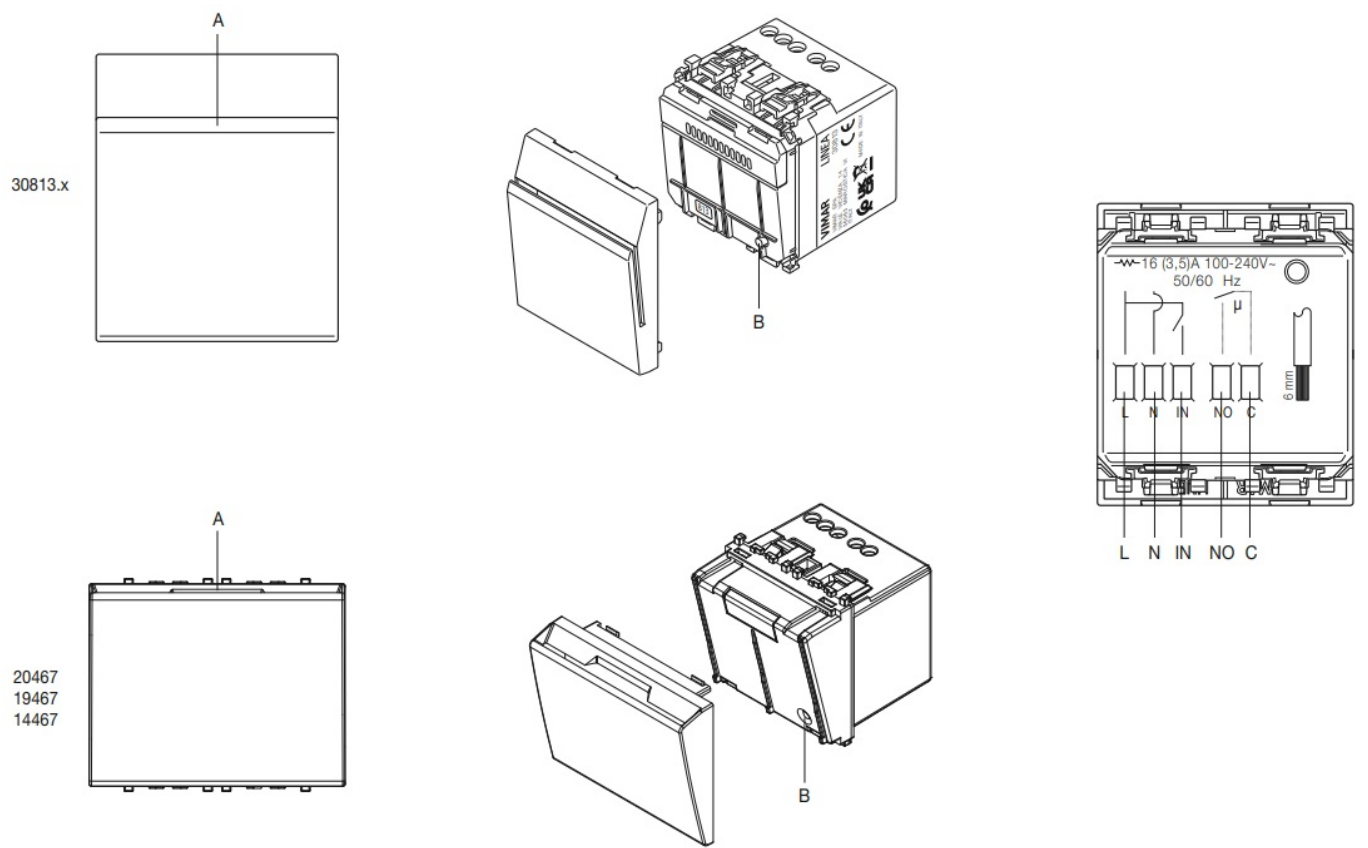
A: Ensure there are no physical obstructions between the device and the wireless router. You may also try relocating the device closer to the router for a stronger signal.

Download the View Wireless App from the stores onto the tablet/smartphone you will be using for configuration

You will need

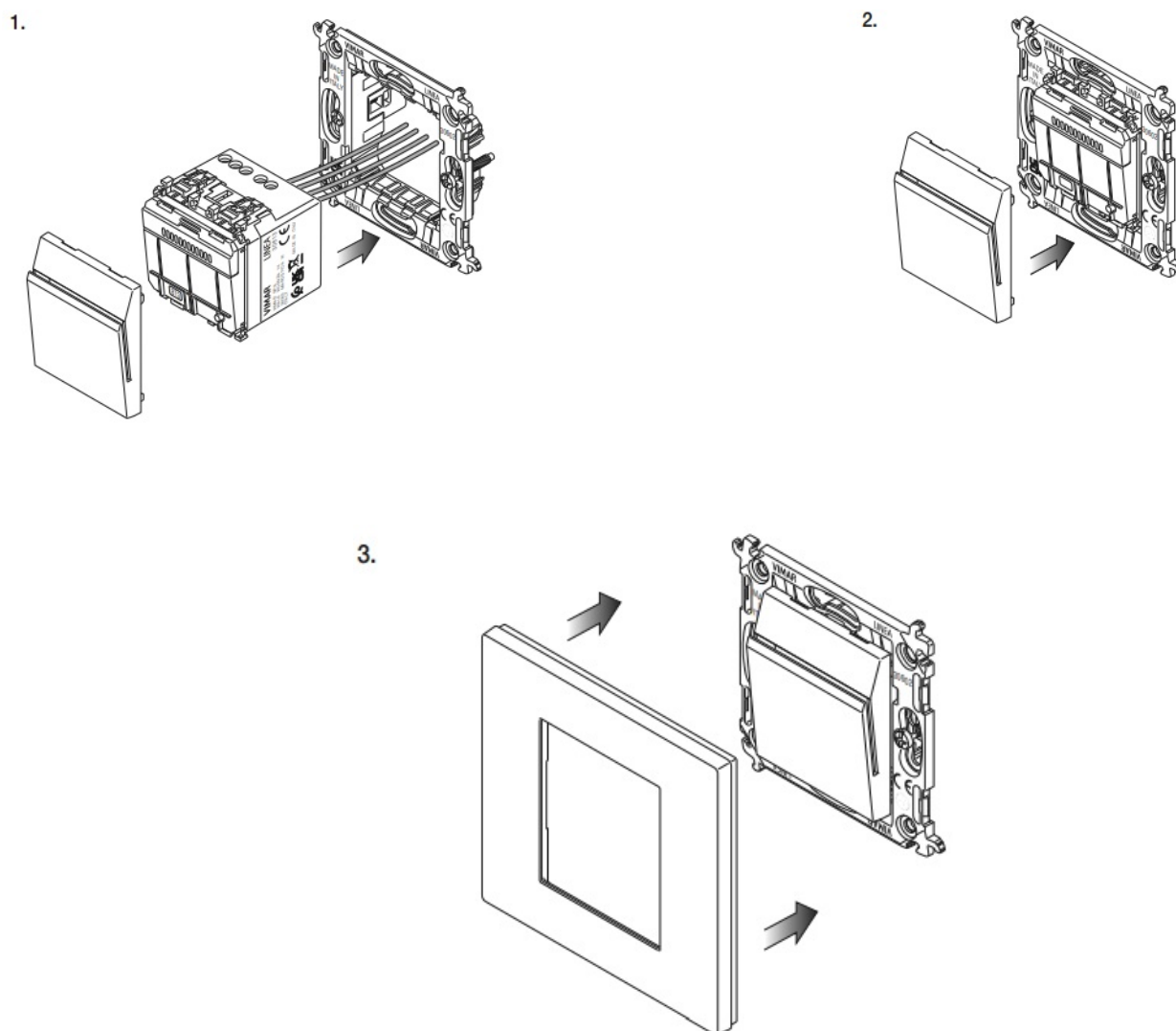
Gateway	Art. 30807.x – 20597 – 19597 – 14597
---------	---

FRONT VIEW AND CONNECTIONS

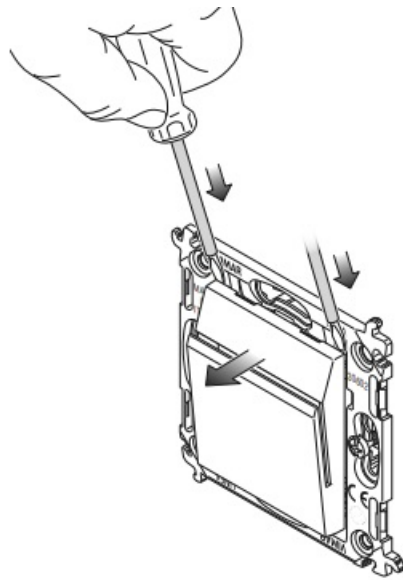


A	Illuminated pocket
B	Configuration button
L	Phase
N	Neutral
IN	Input (not used)
NO	Relay output

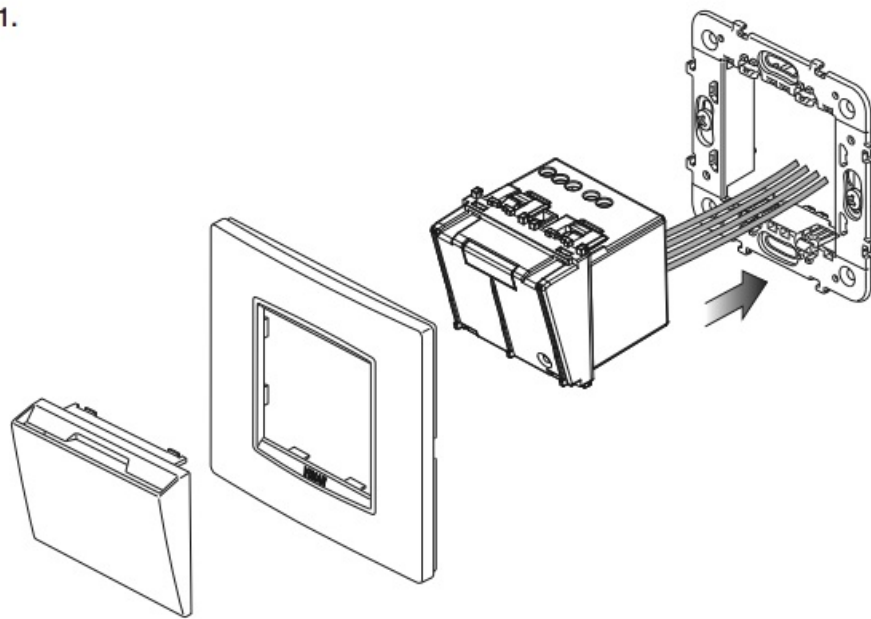
INSTALLATION



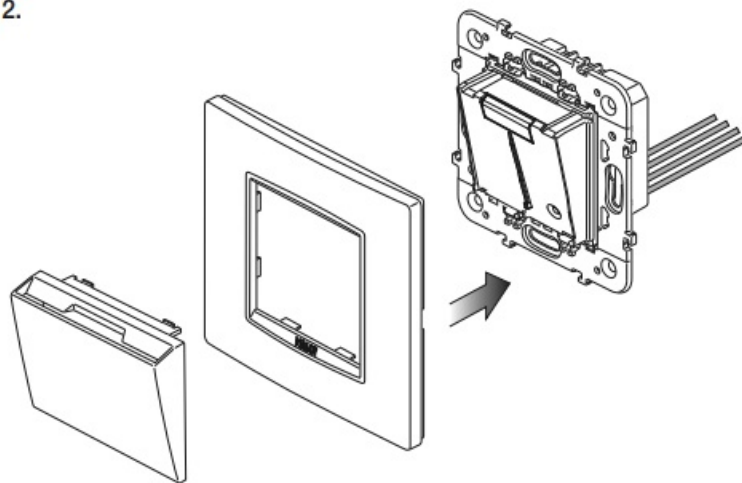
COVER REMOVAL



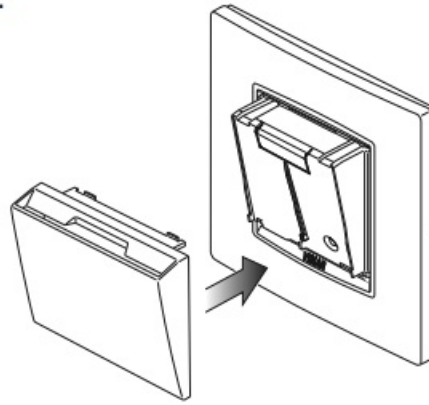
1.



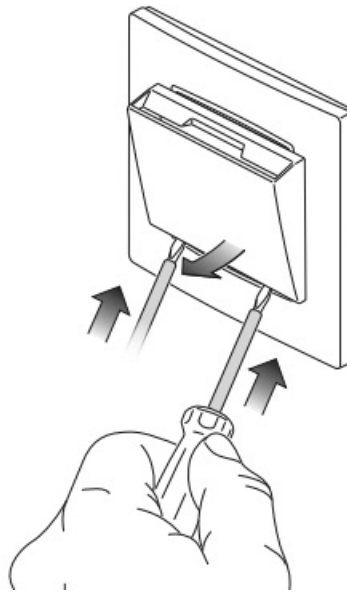
2.



3.



COVER REMOVAL



FEATURES





Rated supply voltage	100-240 V~, 50/60 Hz
Max. power absorption from the mains	1,1 W
RFID technology @ 13.56 MHz, ISO14443A Mifare standard	
RF transmission power	13,553-13,567 M Hz
Frequency range	< 60 dBμA/m
Operating temperature: -5 °C – +45 °C (inside)	
Configuration via View Wireless App for Bluetooth technology system	
Protection degree	IP20
Frequency range	2400-2483,5 MH z
RF transmission power	< 100 mW (20 d Bm)

TERMINALS

L and N for power supply
Relay output 16 A 240 V~ C-NO (NO SELV)
IN input (not used)

CONTROLLABLE LOADS

Heating 16(3,5) A (100.000 cycles)	
Resistive loads	16 A
Cos ϕ 0.6 motors	3,5 A

		Cycles
Incandescent lamps	 5 A	20.000
Fluorescent lamps	 0,5 A	20.000
LED lamps	 100 W- 240 V~ 30 W-1 20 V~	20.000
Electronic transformers	 4 A	20.000

INSTALLATION RULES

Do not connect a SELV circuit to the C-NO terminals as there is no double insulation with on the L-N terminals

- The device and the load controlled must be protected against overloads by installing a device, fuse or automatic 1-way switch, with a rated current not exceeding 16 A
- Do not install two access control devices in the same mounting frame

Important: The length of the cable for connection with the inputs must be no more than 30 m.

The full text of the EU declaration of conformity is on the product sheet available at the following Internet address:
www.vimar.com

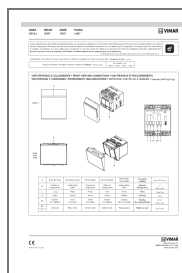
DEVICE DETAILS, CONFIGURATION AND WEEE INFORMATION CAN BE DOWNLOADED IN PDF FORMAT

FROM THE PRODUCT DATA SHEET ON www.vimar.com (the QR code opens the data sheet of art. 30813.B, which shares the same instructions sheet as art. 30813.x-20467-19467-14467).



Viale Vicenza, 14
36063 Marostica VI – Italy
49401771A0 03 2501 www.vimar.com

Documents / Resources



[VIMAR 19467 Connected NFC/RFID Switch Grey](#) [pdf] Instruction Manual
20467, 14467, 19467 Connected NFC RFID Switch Grey, 19467, Connected NFC RFID Switch Grey, NFC RFID Switch Grey, RFID Switch Grey, Switch Grey, Grey

References

- [MAR.com - MediaOptions](#)
- [Home automation, electrical equipment, smart home - Vimar energia positiva](#)
- www.vi
- [Home automation, electrical equipment, smart home - Vimar energia positiva](#)
- [User Manual](#)

[Manuals+](#), [Privacy Policy](#)

This website is an independent publication and is neither affiliated with nor endorsed by any of the trademark owners. The "Bluetooth®" word mark and logos are registered trademarks owned by Bluetooth SIG, Inc. The "Wi-Fi®" word mark and logos are registered trademarks owned by the Wi-Fi Alliance. Any use of these marks on this website does not imply any affiliation with or endorsement.