



# VIMAR 00801 Non-modular Intrusion Detection Component Instruction Manual

[Home](#) » [VIMAR](#) » VIMAR 00801 Non-modular Intrusion Detection Component Instruction Manual 

## Contents

- [1 VIMAR 00801 Non-modular Intrusion Detection Component](#)
- [2 Product Information](#)
- [3 Product Usage Instructions](#)
- [4 INSTALLATION RULES](#)
- [5 POSSIBILITY OF ORIENTATION](#)
- [6 INSTALLATION](#)
- [7 Documents / Resources](#)



**VIMAR**

**VIMAR 00801 Non-modular Intrusion Detection Component**



## Product Information

The product is an adjustable bracket designed for the installation of electrical equipment. It is intended to be installed by qualified personnel in compliance with the regulations regarding electrical equipment installation in the country where the product is used. The bracket should be positioned in locations that are not easily accessible to avoid accidental impact. The device must be installed at least 2 meters from the floor. The product conforms to the LV directive and meets the standard EN 60669-2-1.

## Product Usage Instructions

1. To open the upper cover, lift it up.
2. Loosen the screw blocking the joint to release the cover designed to accommodate the equipment.
3. Fix the adapter 00805 to the supporting frame. For model 20485-19485-14485, also attach the included tamperproof stirrup (16897.S).
4. Attach the supporting frame to the flush mounting box, apply the cover plate, and secure the orientable support using the provided screws.
5. Connect the detector to the cover designed to accommodate the equipment of the orientable support.
6. Fix the body and cover of the orientable support together.
7. For model 20485-19485-14485, connect the microswitch card (24V 1A) included in kit 16897.S to the line.

Please refer to the instruction sheet of the installed equipment for information on detection ranges and volumetric coverage. For further assistance, visit our website at [www.vimar.com](http://www.vimar.com).

**00801:** Orientable support 1 module Eikon, Arké and Plana.

**00802:** Orientable support 2 modules Eikon, Arké and Plana.

This instruction sheet provides mounting instructions of the orientable supports 00801 and 00802 and of the following accessories:

- **00805:** adaptor for the fixing of the orientable supports
- **00800:** frame for the surface mounting of the orientable supports
- **16897.S:** set of accessories for tamperproof use

The orientable supports allow the flush installation (on 3-module rectangular mounting boxes or  $\varnothing$  60 mm round boxes) or on frame for the surface mounting of presence detectors 20485, 19485, 14485 for burglar alarm systems, or of automatic lighting switch IR motion sensor 20181, 20181.120, 20184, 19181, 14181, 148181.120, 14184.

Used in burglar alarm systems with the kit 16897.S, they guarantee tamperproof use and protection against unauthorized removal. The equipment shall be used in dry location.

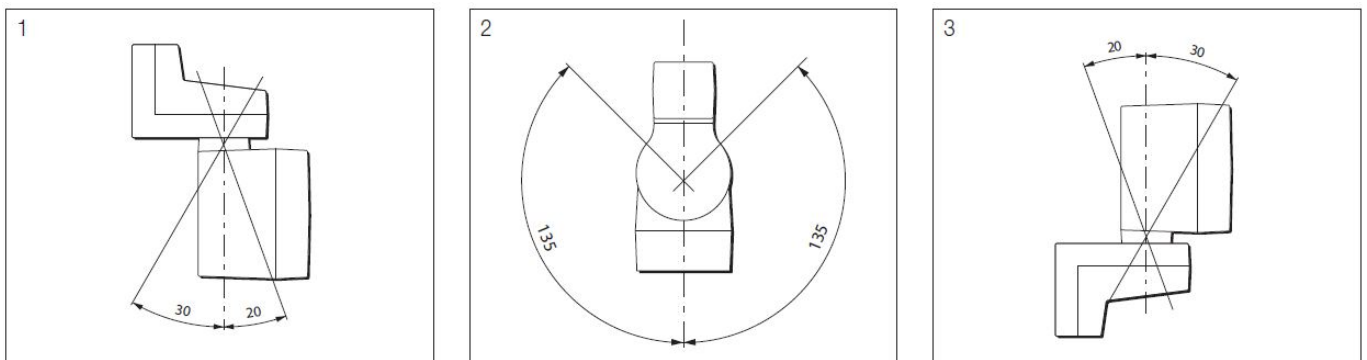
## INSTALLATION RULES

- Installation should be carried out by qualified personnel in compliance with the current regulations regarding the installation of electrical equipment in the country where the products are installed.
- Install the adjustable bracket in positions not easily accessible in order to avoid accidental impact.
- The device must be installed at least 2 m from the floor.

## CONFORMITY TO STANDARDS.

- LV directive.
- Standard EN 60669-2-1.

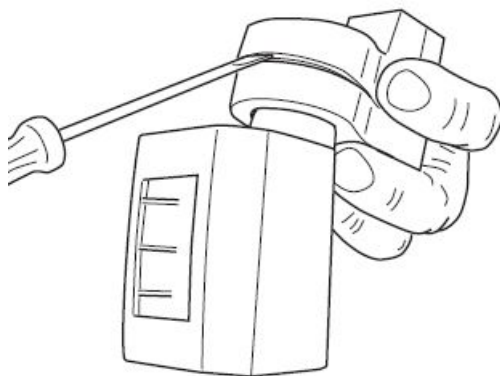
## POSSIBILITY OF ORIENTATION



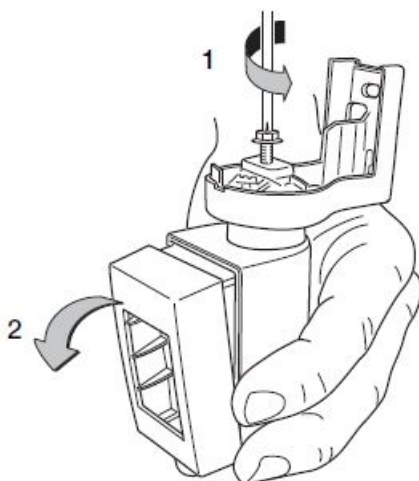
- May be either vertically or horizontally oriented (see respectively figure 1 and figure 2).
- If necessary, they are also possible to install them upside down (see figure 3).
- For the detection ranges, refer to the instruction sheet of the installed equipment.

## INSTALLATION

1. Open the upper cover.

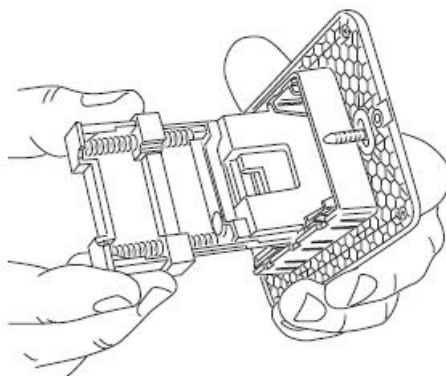


2. Unscrew the screw blocking the joint until the cover designed to accommodate the equipment is released.

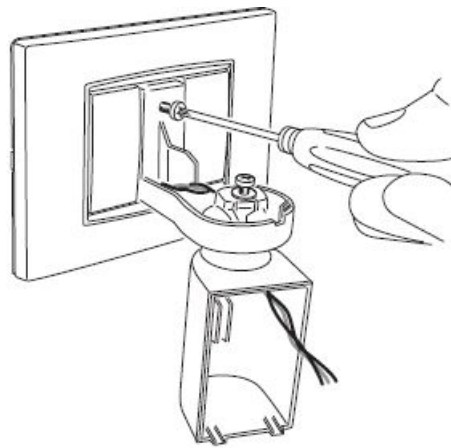


## FLUSH INSTALLATION MODALITY

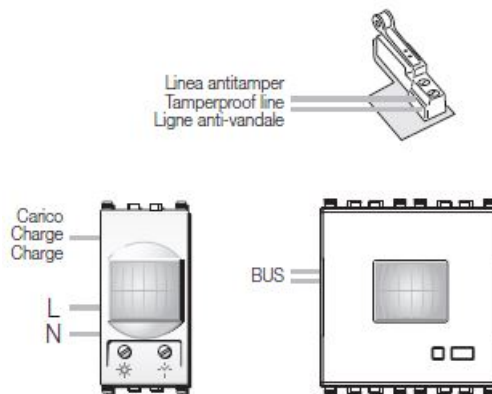
1. Fix the adaptor 00805 to the supporting frame and, only for 20485-19485- 14485 the stirrup for tamperproof use included in 16897.S.



2. Fix the supporting frame to the flush mounting box, apply the cover plate and fix the orientable support using the delivered screws.



3. Connect to the line the microswitch card (24 V 1 A) included in 16897.S only for 20485-19485-14485.



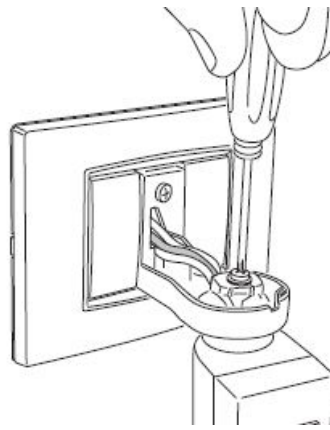
4. Fix the detector to the cover designed to accomodate the equipment.



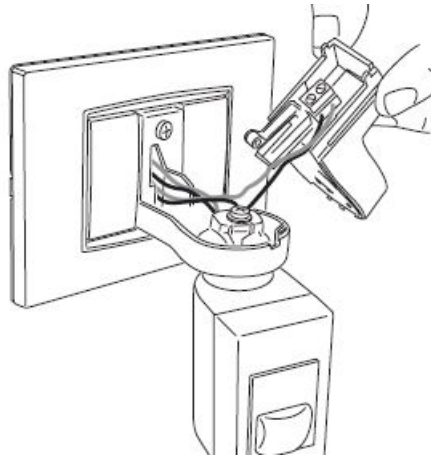
5. Fix the body and cover of the orientable support.



6. Orient the detector as desired and fasten the screw blocking the joint.



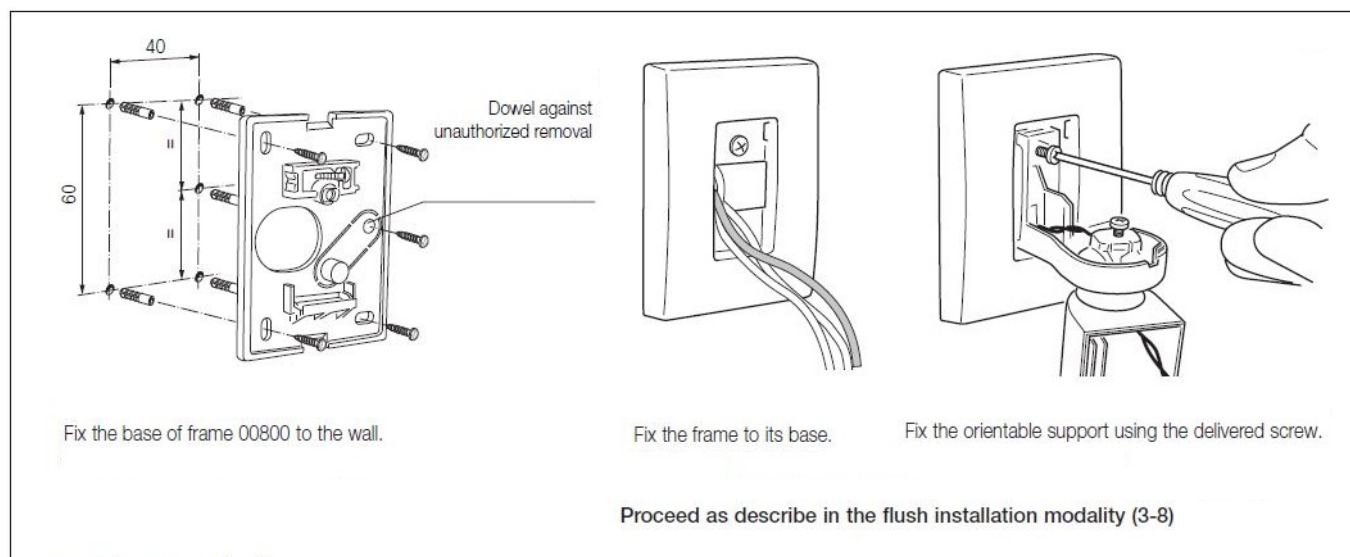
7. Insert and fix the microswitch card inside the upper cover of the orientable support (only for 20485-19485-14485).



8. Fix the upper cover of the orientable support.

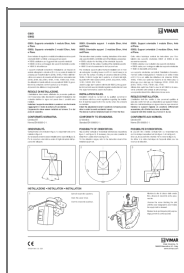


## **SURFACE INSTALLATION MODALITY**



Viale Vicenza, 14  
36063 Marostica VI – Italy  
[www.vimar.com](http://www.vimar.com)

## Documents / Resources



[VIMAR 00801 Non-modular Intrusion Detection Component](#) [pdf] Instruction Manual  
00802, 00801, 00801 Non-modular Intrusion Detection Component, -modular Intrusion Detection Component, Detection Component