



Villa Pergola HC-PM03D-T1 Remote Control With Light Control Rain Sensor Instructions

[Home](#) » [Villa Pergola](#) » Villa Pergola HC-PM03D-T1 Remote Control With Light Control Rain Sensor Instructions



Contents

- [1 Villa Pergola HC-PM03D-T1 Remote Control With Light Control Rain Sensor](#)
- [2 Product Information](#)
- [3 Product Usage Instructions](#)
- [4 Function and Features](#)
- [5 HC-PM03\D-T1 Remote control](#)
- [6 HC-PR04 Rain sensor](#)
- [7 Product Parameters](#)
- [8 Operating Instruction](#)
- [9 Documents / Resources](#)
- [10 Related Posts](#)



Villa Pergola HC-PM03D-T1 Remote Control With Light Control Rain Sensor



Product Information

The product is a remote control and rain sensor designed for use with various emitters and tubular motors. The remote control is 86mm*86mm in size and conforms to international installation standards. It features an industrial grade microcomputer chip, shock-proof current relay, and precision surface moisture-proof treatment. The power supply has safety protection and a power supply time of 5 minutes. The rain sensor features an anti-ultraviolet radiation shell that is suitable for outdoor use.

It has a rain-sensitive surface designed at 45 degrees to keep the induction plate dry and uses a gold sinking process with strong oxidation resistance. The sensor is sensitive to rain and has two installation methods.

Remote Control Parameters

- Product Name: Remote control with light control
- Product Model: HC-PM03D-T1
- Receiving/Transmitting Frequency: 433.92MHz
- Working Temperature: -20~+85
- Receiving Sensitivity: -110dBm
- Allowed Number of Transmitters: 8pcs

Rain Sensor Parameters

- Product Name: Rain sensor
- Product Model: HC-PR04
- Receiving/Transmitting Frequency: 433.92MHz
- Working Voltage: DC5V-24V
- Working Temperature: -20~+85

Product Usage Instructions

To power on the motor using the remote control:

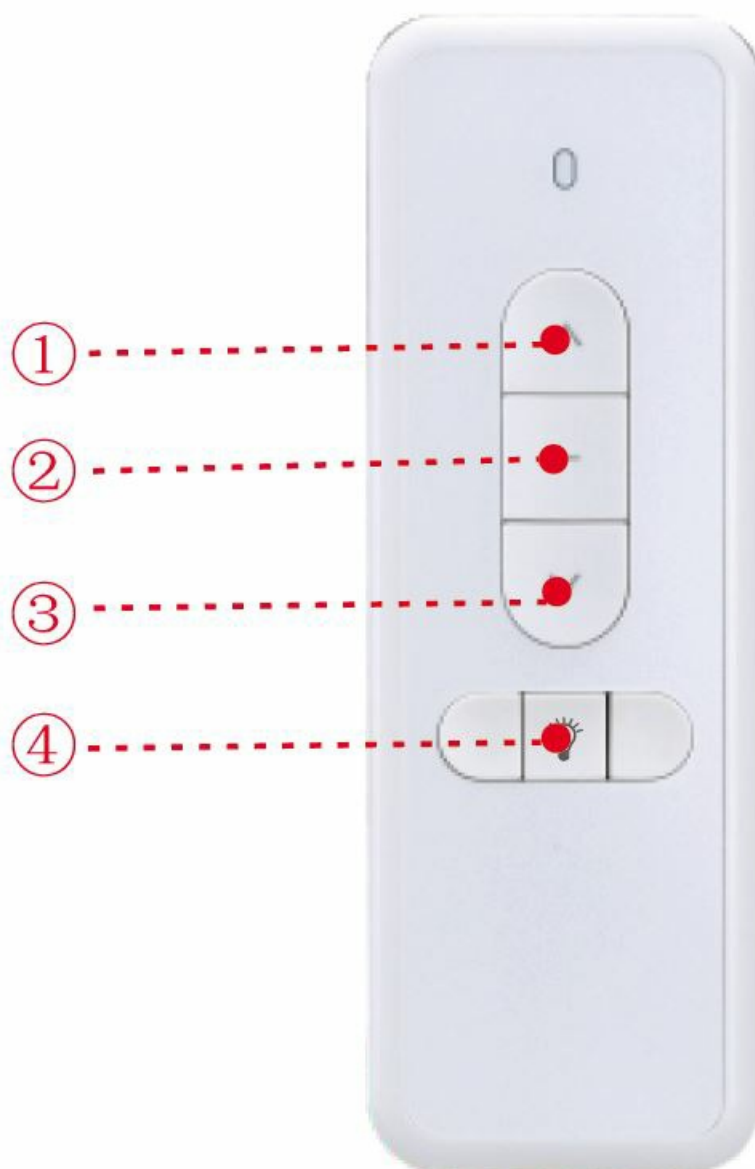
1. Open the back cover of the remote control.
2. Press and hold the code key for more than 5 seconds with a fine needle.
3. When the motor beeps continuously, it has entered the state of learning code.
4. Press and hold the code key for the rain sensor for more than 3 seconds with a fine needle to complete the learning code process.

Note: The remote control can control up to 8 transmitters.

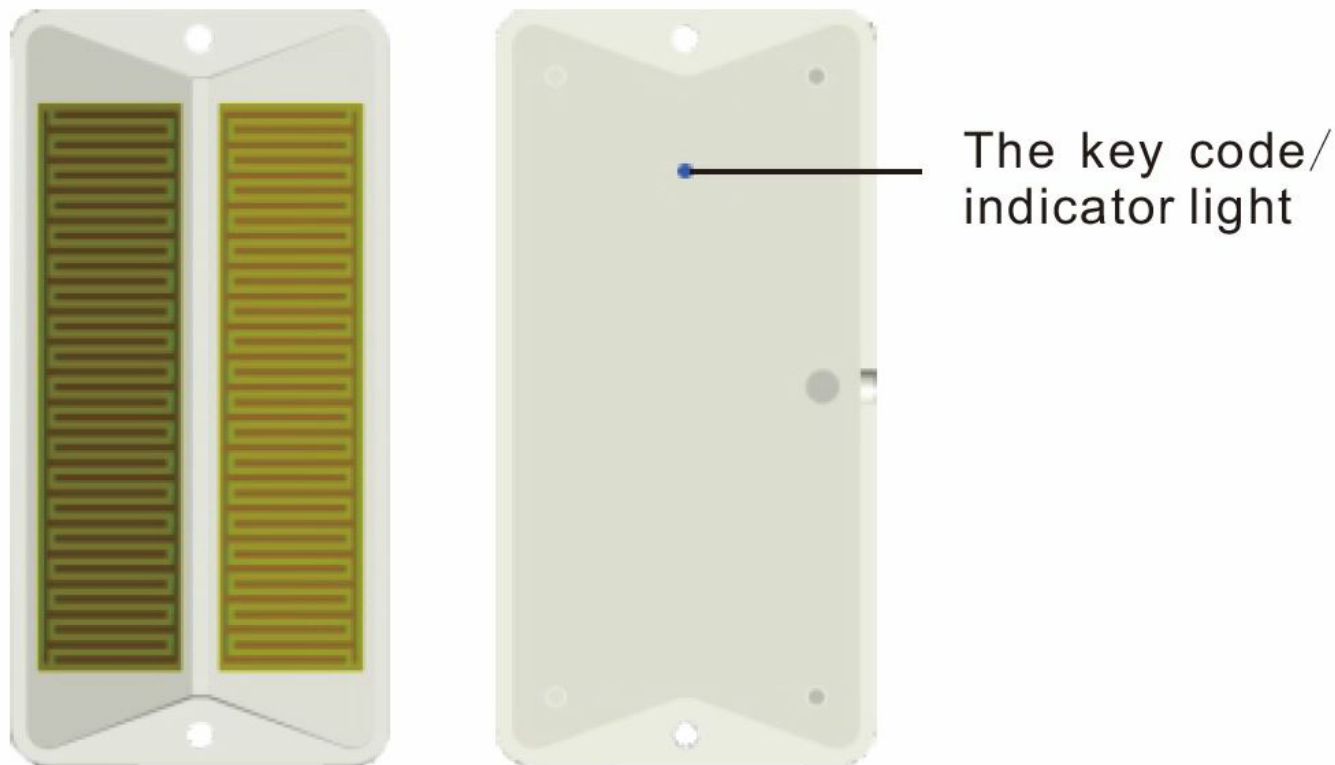
Function and Features

- 86mm*86mm, in accordance with international installation standards;
- The electric structure is in partial conformity with the standard fire protection requirement of the electrician;
- Industrial-grade microcomputer chip is used to improve product quality and reliability greatly;
- Use shock-proof current relay;
- Components using precision SMT industry, surface moisture-proof treatment;
- The power supply has safety protection, power supply time is 5 minutes; It is used with various emitters and tubular motors.

HC-PM03\D-T1 Remote control



HC-PR04 Rain sensor



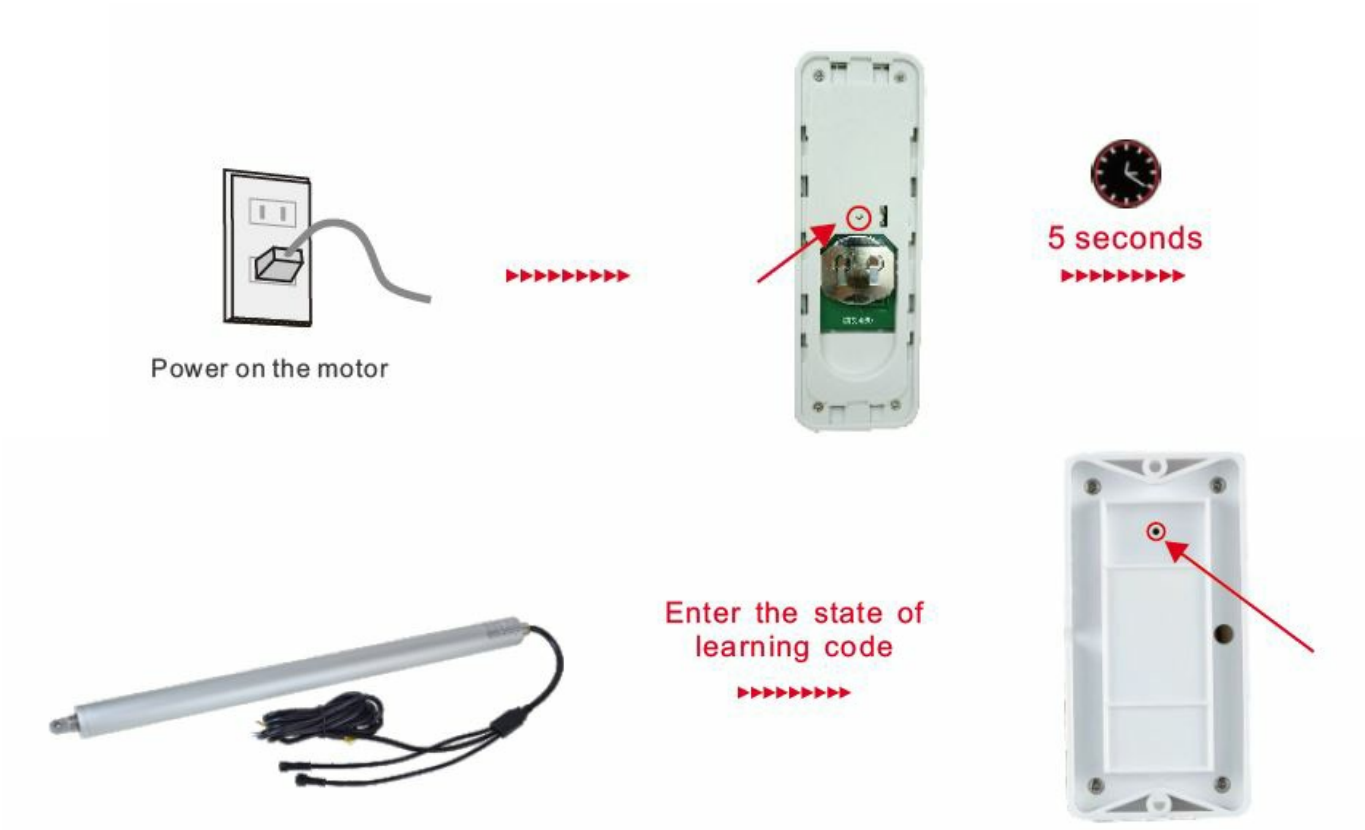
- Exquisite appearance design
- Anti-ultraviolet radiation shell, suitable for outdoor use
- The rain-sensitive surface is designed at 45 degrees to facilitate the induction plate to keep dry
- The induction plate adopts gold sinking process and has strong oxidation resistance
- Sensitive to rain
- Two installation methods, free choice

Product Parameters

Product name	Remote control with light control
Product model	HC-PM03\D-T1
Receiving/transmitting frequency	433.92MHz
Working temperature	-20°C~+85°C
Receiving sensitivity	-110dBm
Allowed number of transmitters	≤8pcs

Product name	Rain sensor
Product model	HC-PR04
Receiving/transmitting frequency	433.92MHz
Working voltage	DC5V-24V
Working temperature	-20°C~+85°C

Operating Instruction



1. Open the back cover of the remote control and press and hold the code key for more than 5 seconds with a fine needle
2. When the motor keeps beeping “dididi”
3. Press and hold the code key for the rain sensor for more than 3 seconds with a fine needle. Learning code is successful.

Documents / Resources

	<p>Villa Pergola HC-PM03 D-T1 Remote Control With Light Control Rain Sensor [pdf] Instructions</p> <p>HC-PM03 D-T1 Remote Control With Light Control Rain Sensor, HC-PM03 D-T1, Remote Control With Light Control Rain Sensor, Light Control Rain Sensor, Rain Sensor</p>
--	---