



## VIKVIZ IP Camera User Guide

[Home](#) » [VIKVIZ](#) » VIKVIZ IP Camera User Guide 

VIKVIZ IP Camera User Guide

### VIKVIZ IP CAMERA Quick Start Guide

V 2021.01

**Note:** This manual may contain some incorrect places, even though it was published with our carefully proofreading. The news updates will be added to the next release without notice. Your valuable advice is really appreciated.

#### Contents

- [1 Connecting the camera to system](#)
- [2 Modifying the camera's IP address](#)
- [3 Working with Internet Explorer](#)
- [4 General Configurations](#)
- [5 Working with mobile device](#)
- [6 Frequently Asked Questions](#)
- [7 Documents / Resources](#)
  - [7.1 References](#)
- [8 Related Posts](#)

### Connecting the camera to system

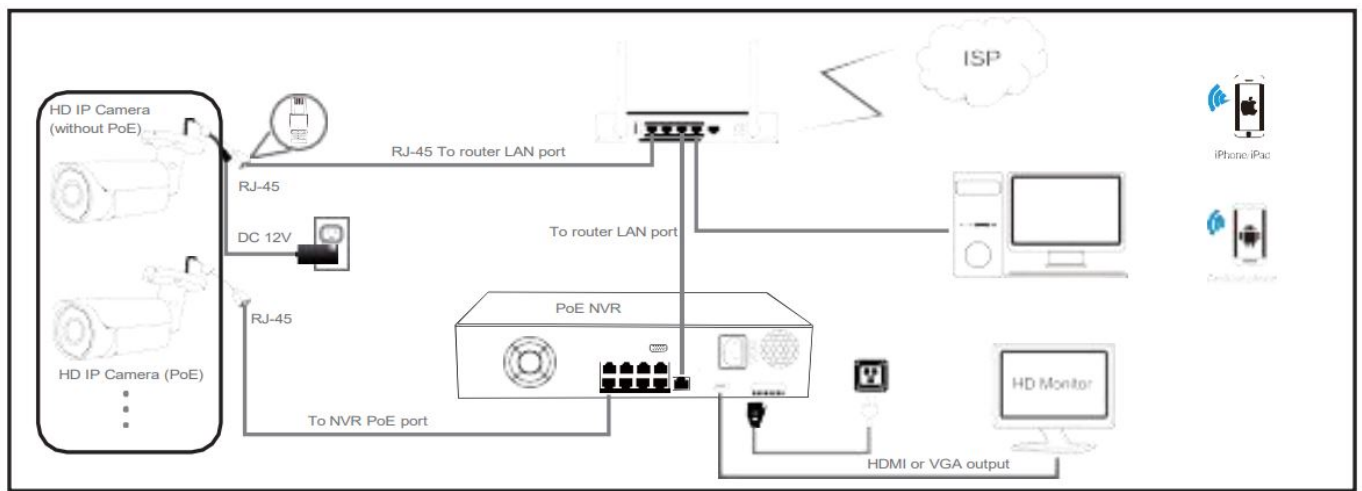
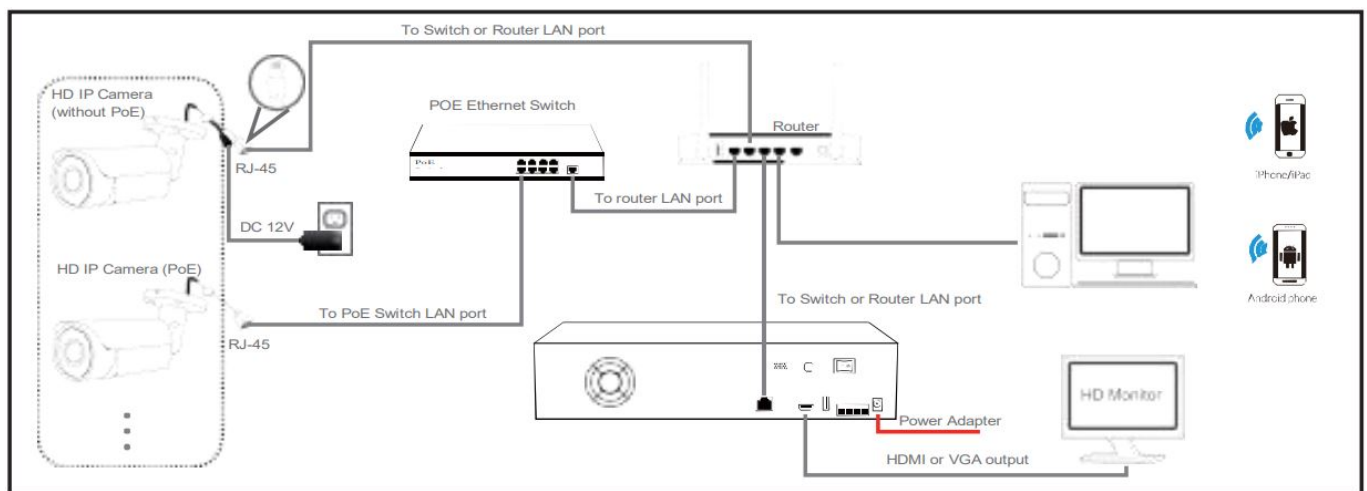


Figure 1: Working With POE NVR



#### Note: 1.

The camera should be connected to an OPTIONAL 12 volt power supply if you do not use PoE (Power over Ethernet). 2. A Windows computer is more convenient to setup and troubleshooting

### Modifying the camera's IP address

**Default: IP address: 192.168.1.110 , Username: admin, Password: 123456**

( We strongly recommend modifying the default password for your security). Each IP camera has the same default IP address after leaving the factory. In order to guarantee network connectivity and access the live video, it is essential to change the camera's IP address to unique via computer before using. You can install the **device search tool AjDevTools and Hikvision SADP tools**

<http://www.vikviz.com/NewsDetail/2520633.html>

Before modifying the IP address you'd better confirm the IP network planning and avoid IP address conflict.

Steps on Local Area Windows 10 PC : **Search Windows -> cmd -> ipconfig /all**

```
Command Prompt
C:\Users\Administrator>ipconfig /all

Windows IP Configuration

Host Name . . . . . : Tony-testWin10
Primary Dns Suffix . . . . . :
Node Type . . . . . : Hybrid
IP Routing Enabled. . . . . : No
WINS Proxy Enabled. . . . . : No

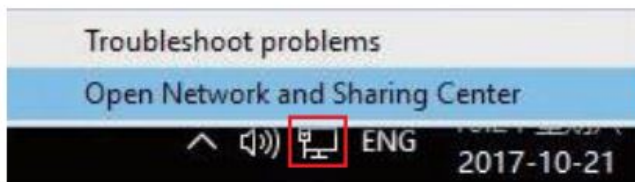
Ethernet adapter Local Area Connection:

   Connection-specific DNS Suffix  :
   Description . . . . . : Realtek PCIe GBE Family Controller
   Physical Address. . . . . : 40-61-86-0C-5F-95
   DHCP Enabled. . . . . : Yes
   Autoconfiguration Enabled . . . . : Yes
   Link-local IPv6 Address . . . . . : fe80::b525:234:58d4:9831%10(Preferred)
   IPv4 Address. . . . . : 192.168.1.158(Preferred)
   Subnet Mask . . . . . : 255.255.255.0
   Lease Obtained. . . . . : Saturday, October 21, 2017 10:15:08 AM
   Lease Expires . . . . . : Saturday, October 21, 2017 12:15:08 PM
   Default Gateway . . . . . : 192.168.1.1
   DHCP Server . . . . . : 192.168.1.1
   DHCPv6 IAID . . . . . : 138436998
   DHCPv6 Client DUID. . . . . : 00-01-00-01-20-1E-A3-49-40-61-86-0C-5F-95
   DNS Servers . . . . . : 192.168.1.1
                           192.168.1.1
   NetBIOS over Tcpip. . . . . : Enabled
```

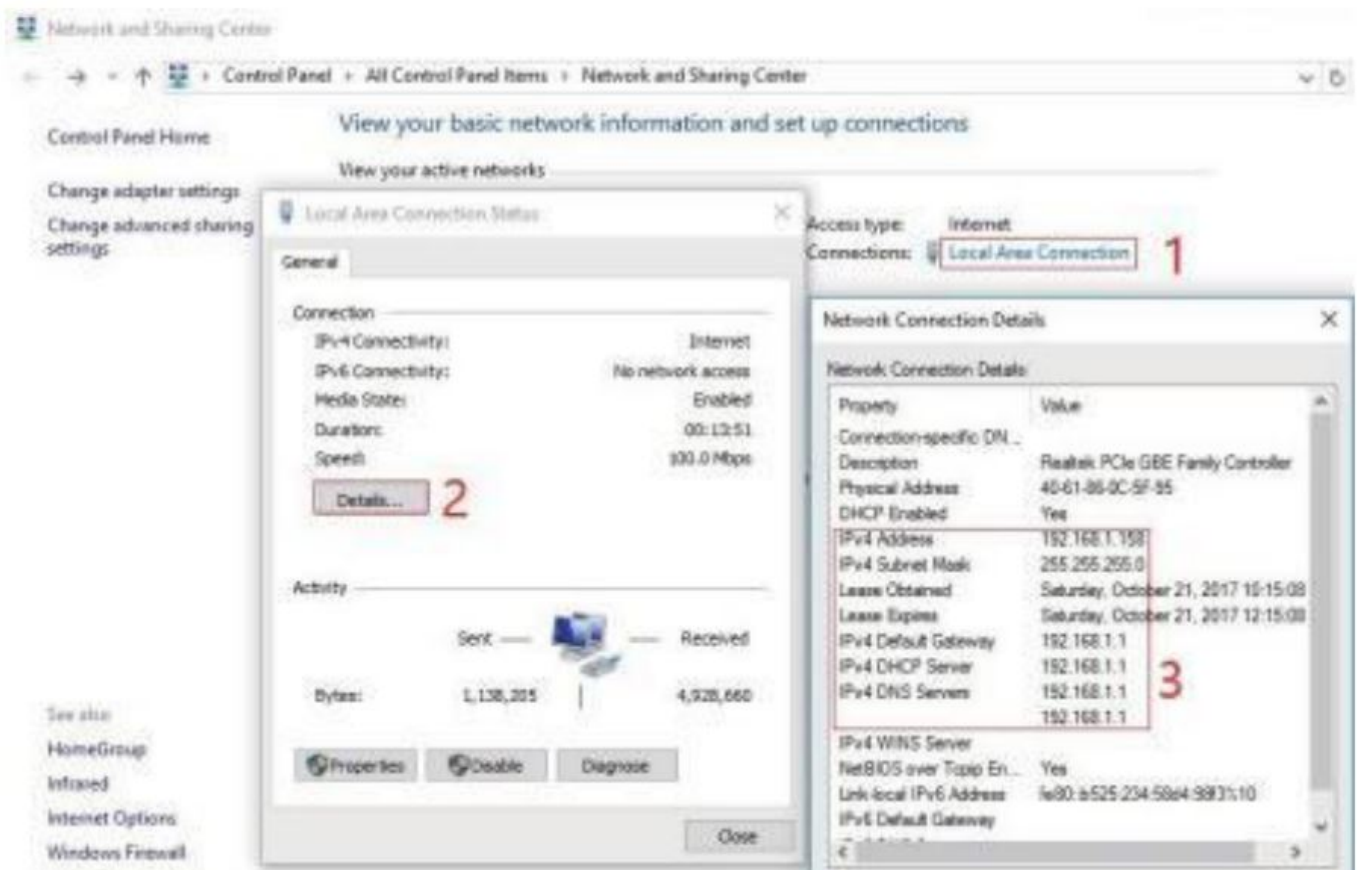
Now you can get all the local network information.

IPv4 Address: 192.168.1.?  
Subnet Mask: 255.255.255.0  
Default gateway: 192.168.1.1  
DNS Servers: 192.168.1.1

Note : you can also find out the LAN configuration via Windows GUI



Right-click on the Network icon and select **open Network and Sharing Center**.



If the camera is installed to work with the local switch or router directly, the camera IP range should be 192.168.1.x (x=2-254). To void IP conflict, you should test and select an unoccupied IP like this:

## Command Prompt ping test

```
Command Prompt
C:\Users\Administrator>ping 192.168.1.123

Pinging 192.168.1.123 with 32 bytes of data:
Reply from 192.168.1.158: Destination host unreachable.
Reply from 192.168.1.1: Destination host unreachable.
Reply from 192.168.1.1: Destination host unreachable.
Reply from 192.168.1.1: Destination host unreachable.

Ping statistics for 192.168.1.123:
    Packets: Sent = 4, Received = 4, Lost = 0 (0% loss),

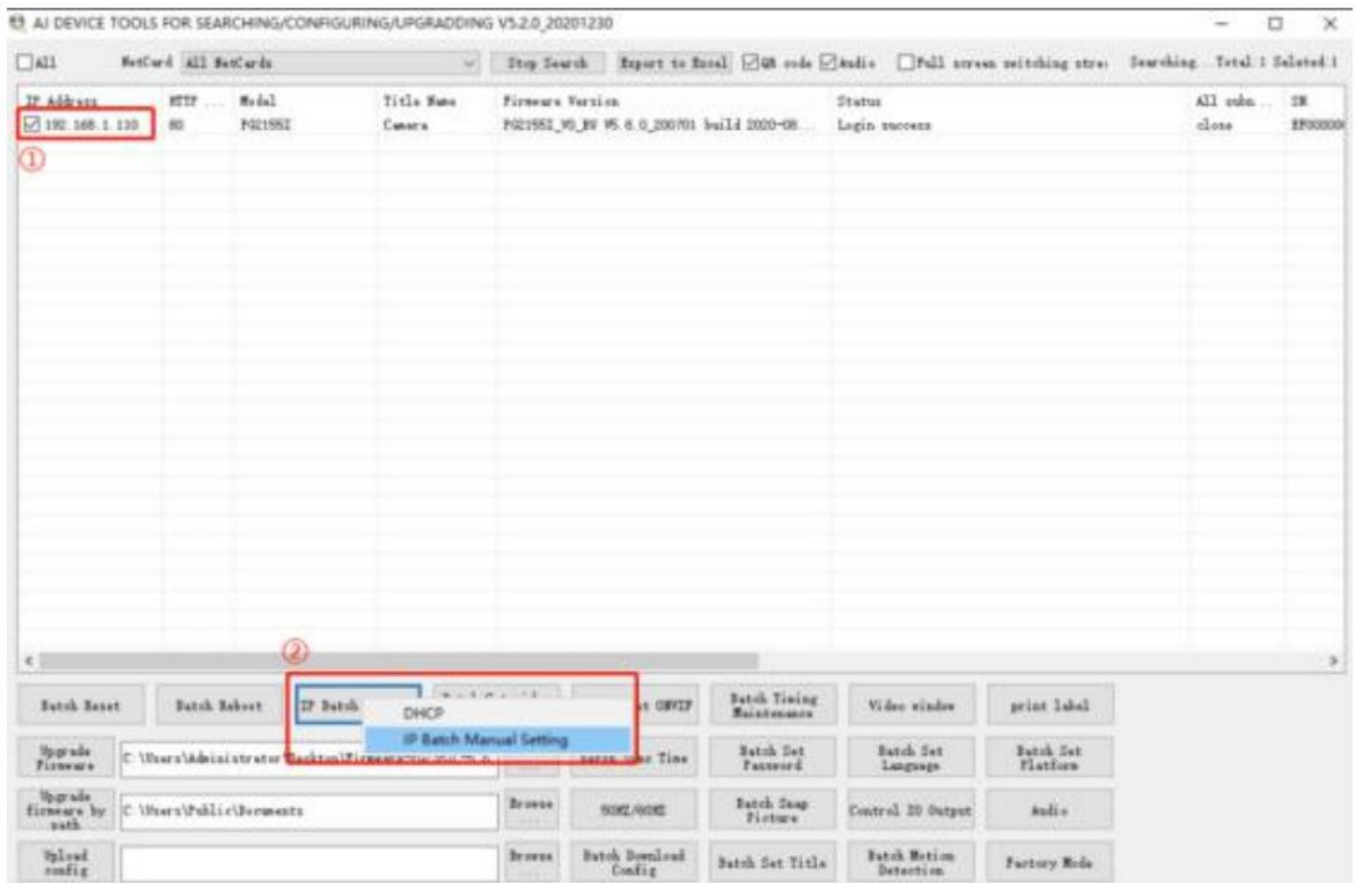
C:\Users\Administrator>ping 192.168.1.41

Pinging 192.168.1.41 with 32 bytes of data:
Reply from 192.168.1.41: bytes=32 time=1ms TTL=64
Reply from 192.168.1.41: bytes=32 time<1ms TTL=64
Reply from 192.168.1.41: bytes=32 time<1ms TTL=64
Reply from 192.168.1.41: bytes=32 time=1ms TTL=64

Ping statistics for 192.168.1.41:
    Packets: Sent = 4, Received = 4, Lost = 0 (0% loss),
Approximate round trip times in milli-seconds:
    Minimum = 0ms, Maximum = 1ms, Average = 0ms

C:\Users\Administrator>
```

Only when reply unreachable that means the IP address is no conflict and available, otherwise when you see time reply do not use this IP address.





The image shows a dialog box titled "IP address setting" with a close button (X) in the top right corner. Inside the dialog, there is a checkbox labeled "DHCP" which is currently unchecked. Below this, there are five text input fields, each with a label to its left: "IP Address", "netmask", "Gateway", "DNS1", and "DNS2". The "IP Address" field contains "192 . 168 . 1 . 120", "netmask" contains "255 . 255 . 255 . 0", "Gateway" contains "192 . 168 . 1 . 1", "DNS1" contains "192 . 168 . 1 . 1", and "DNS2" contains "8 . 8 . 8 . 8". At the bottom of the dialog, there are two buttons: "OK" and "Cancel".

a. Click **Start Search** and all your cameras in the LAN will be listed. Modify IP address to suit the LAN's IP scheme. There are two modifying methods available:

1) Right click on the desired camera and choose "Modify IP address".

2) Click the **ALL** check-box then click "IP Batch Setting"

b. You can also enable the camera DHCP function if there is a DHCP server available in the LAN. Mostrouter has DHCP server built-in. (IP address in DHCP setting may change after device restart. We do not recommend leaving the IP camera on DHCP).

**Tips:** Reset Password -> Restore default settings;

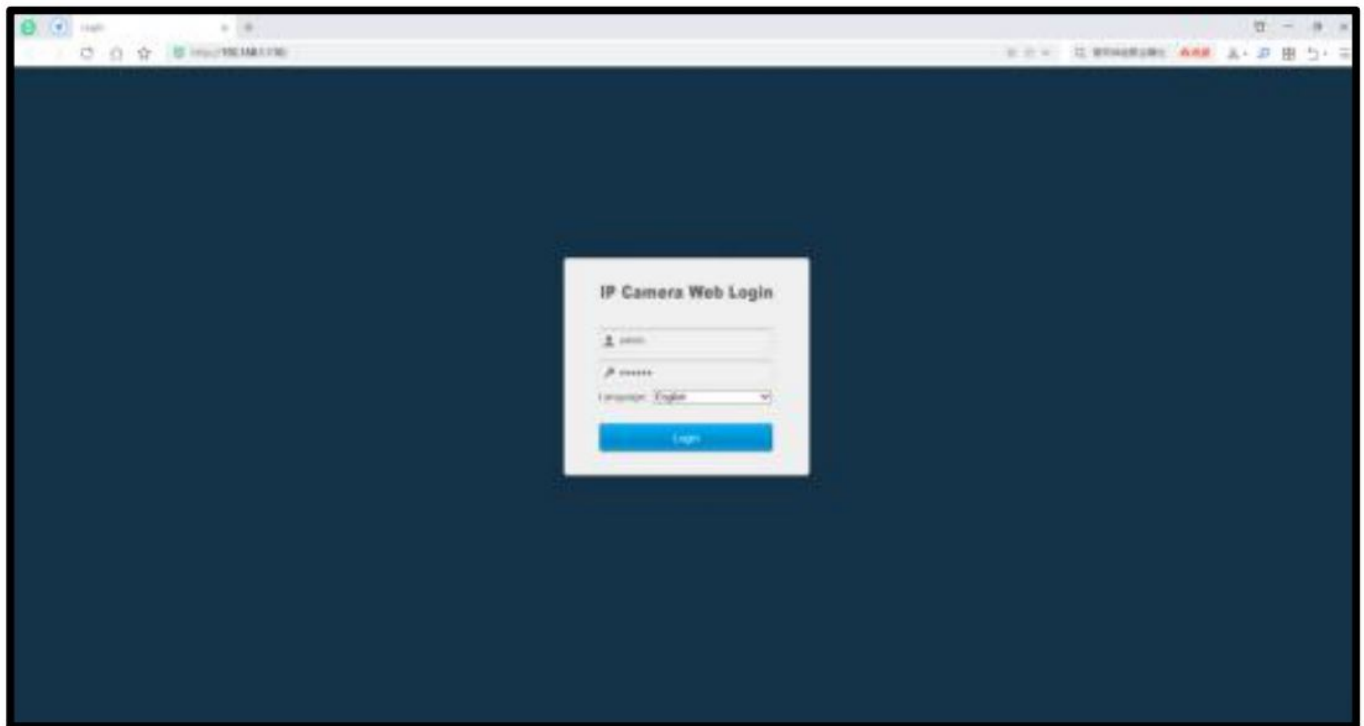
Video full-screen -> double-click video;

Firmware upgrade -> Select the check-box, click Browse then click File Upgrade.

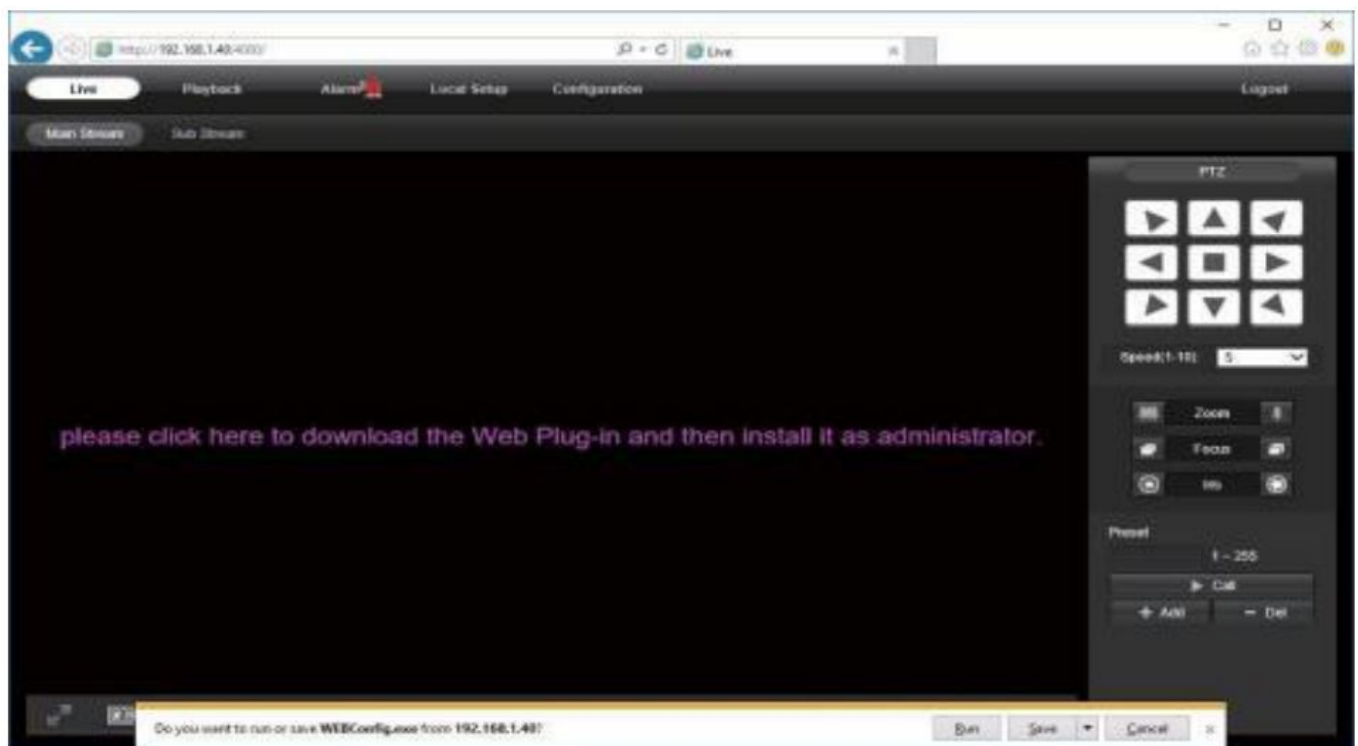
## Working with Internet Explorer

To access the camera's web interface, type in the IP camera's IP address in Internet Explorer's URL bar to gain access to the login page. Please modify IP address to the same subnet if login page can not load.

(Default user name: **admin**, Password: **123456**) Firefox ESR and IE are supported.

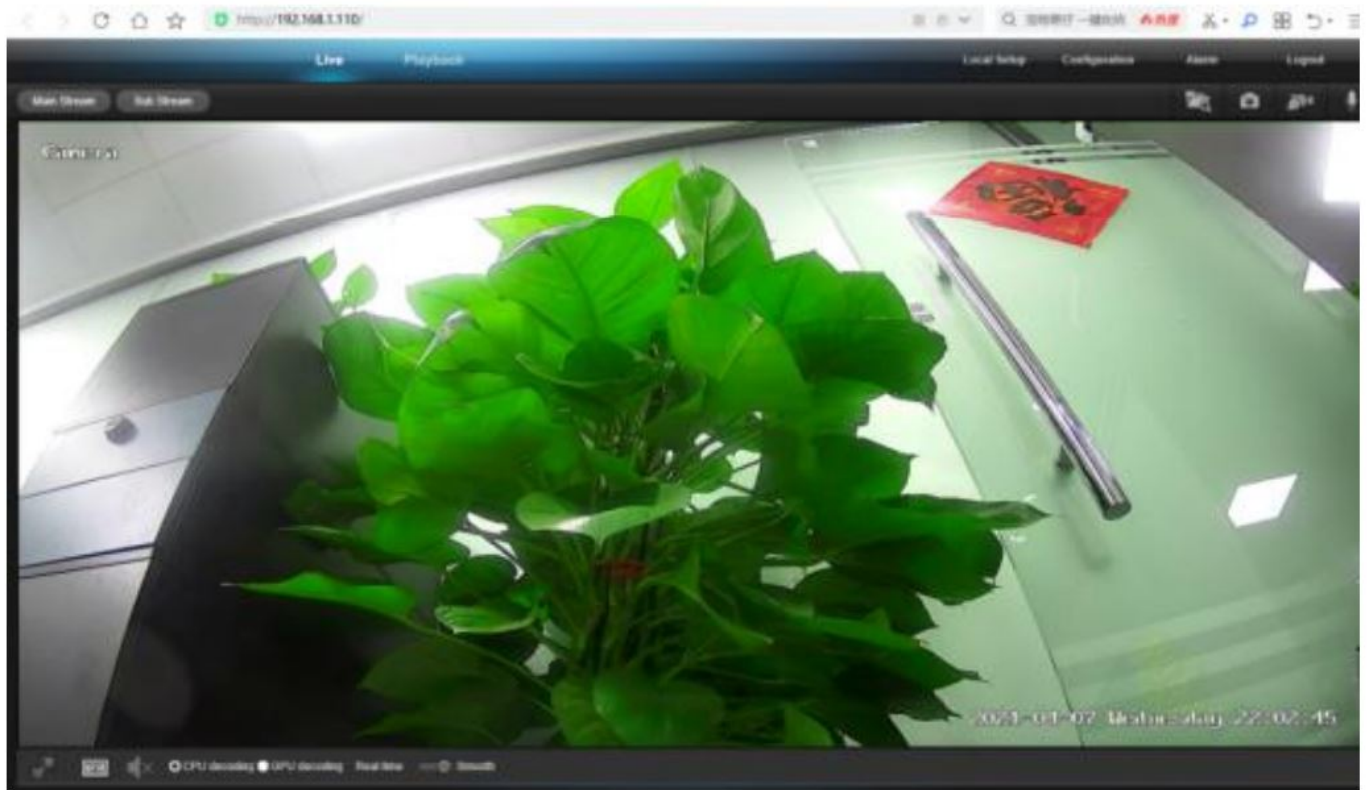


From the login page, select your familiar language, then log in with the username and password.



Install **Web Plug-in** when red line characters prompted. You may have to download **WEBConfig.exe** and run it as administrator. After installation, restart or refresh your web browser and access the IP again. The live video will start automatically after login successfully





**Note:** Only the **Motorized Auto Focus** cameras can **Zoom In** and **Zoom Out**. Keeping pressing on live video and dragging for Digital Zoom.

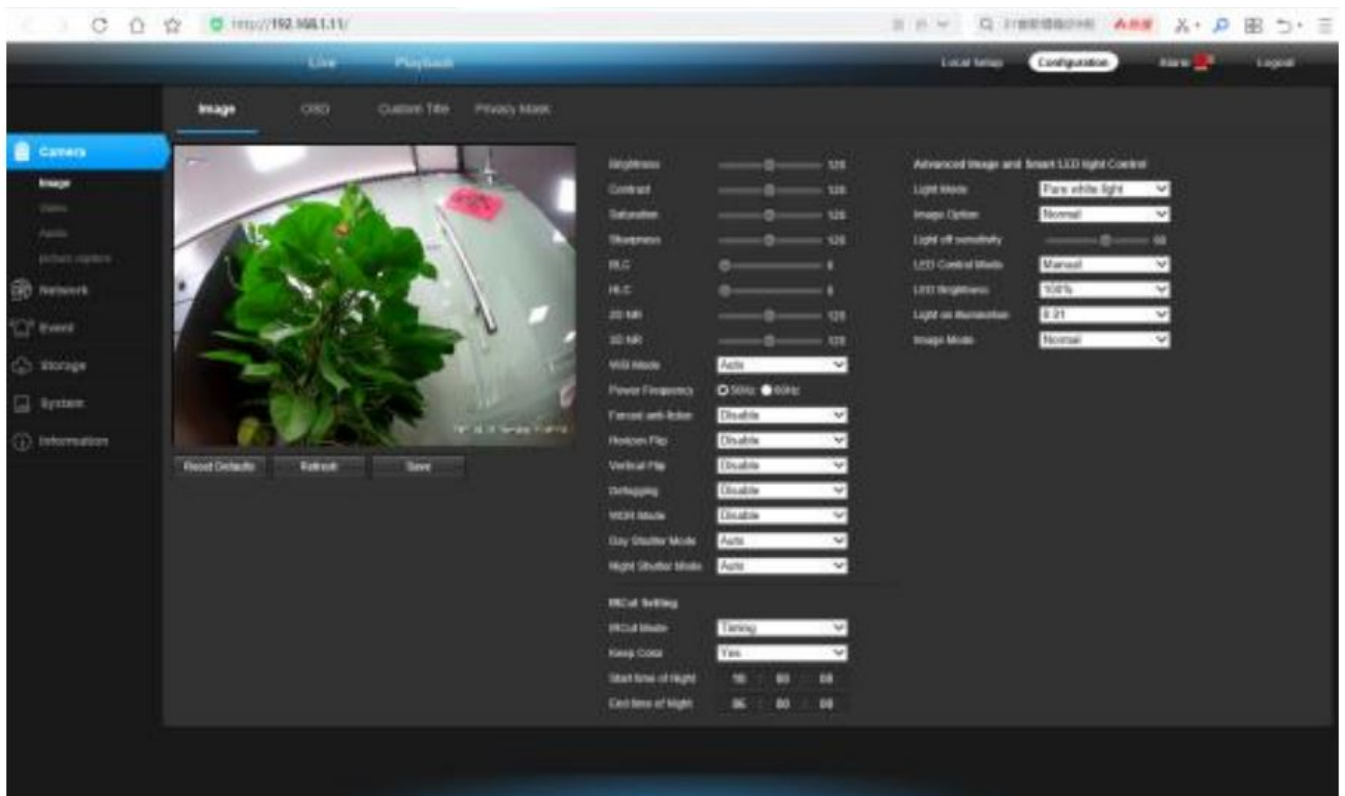
If there is a delay in video response when accessing remotely, please switch to Sub Stream instead. To learn the function of each button, just put the mouse on, it will show screen tips.

## General Configurations

### 1) Power System frequency configuration(50Hz/60Hz)

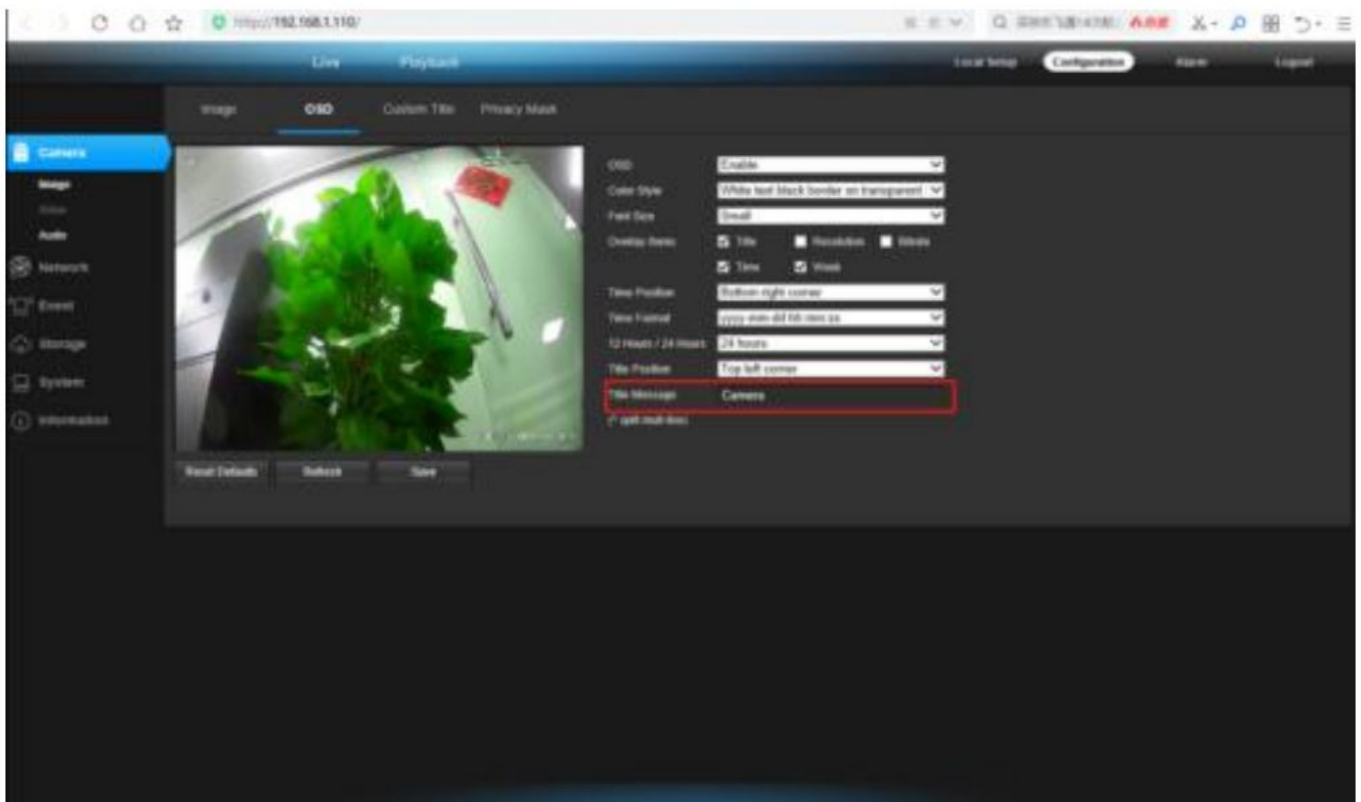
- **Configuration > Camera > Image > Power Frequency**

To avoid the video flicker, the camera should be set to right working frequency to suit the country electric system.



2) To modify the camera Title name and Time & Date

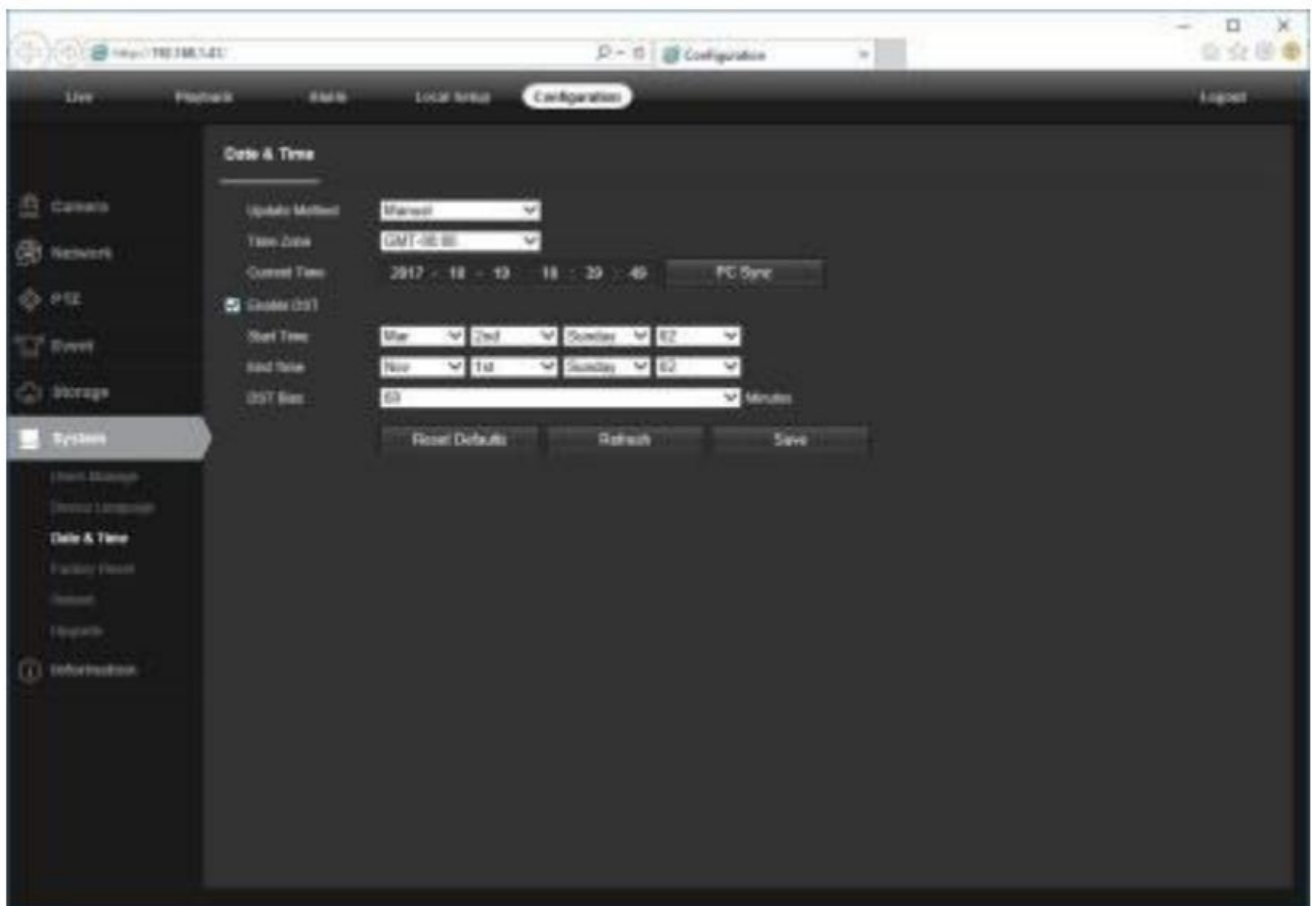
- **Configuration > Camera > Image > OSD > Title Message**



- **Configuration > System > Time setup**

There are two time update modes available, **Manual** and **NTP**.



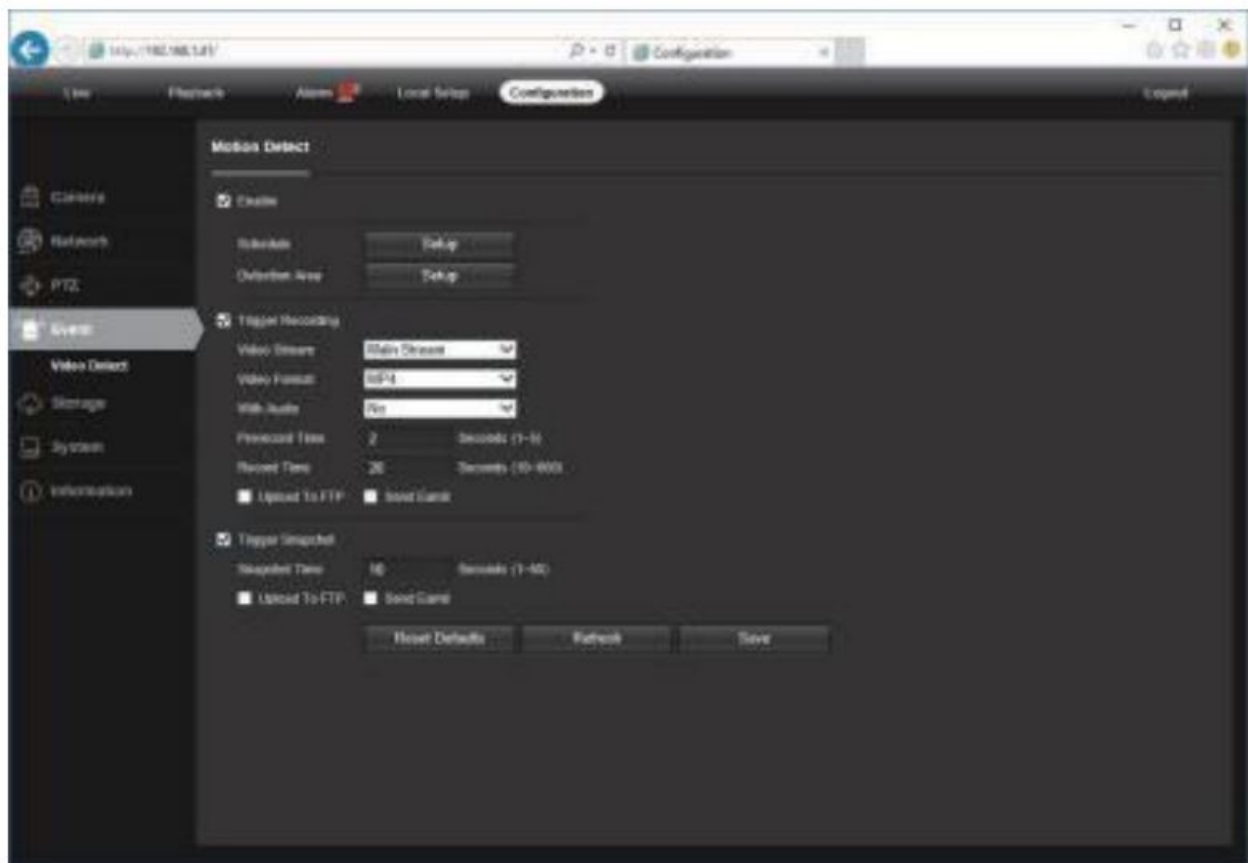


a. Select your Time Zone, and click PC Sync. Set up your DST (Daylight Savings Time) if needed , click Save. (Time and date will reset to 2000-01-01 if camera restarts)

b. If the camera is connected to the Internet, you can set up a NTP server for the camera to sync the time and date automatically.

### 3) Toenable Motion Detection Alarm

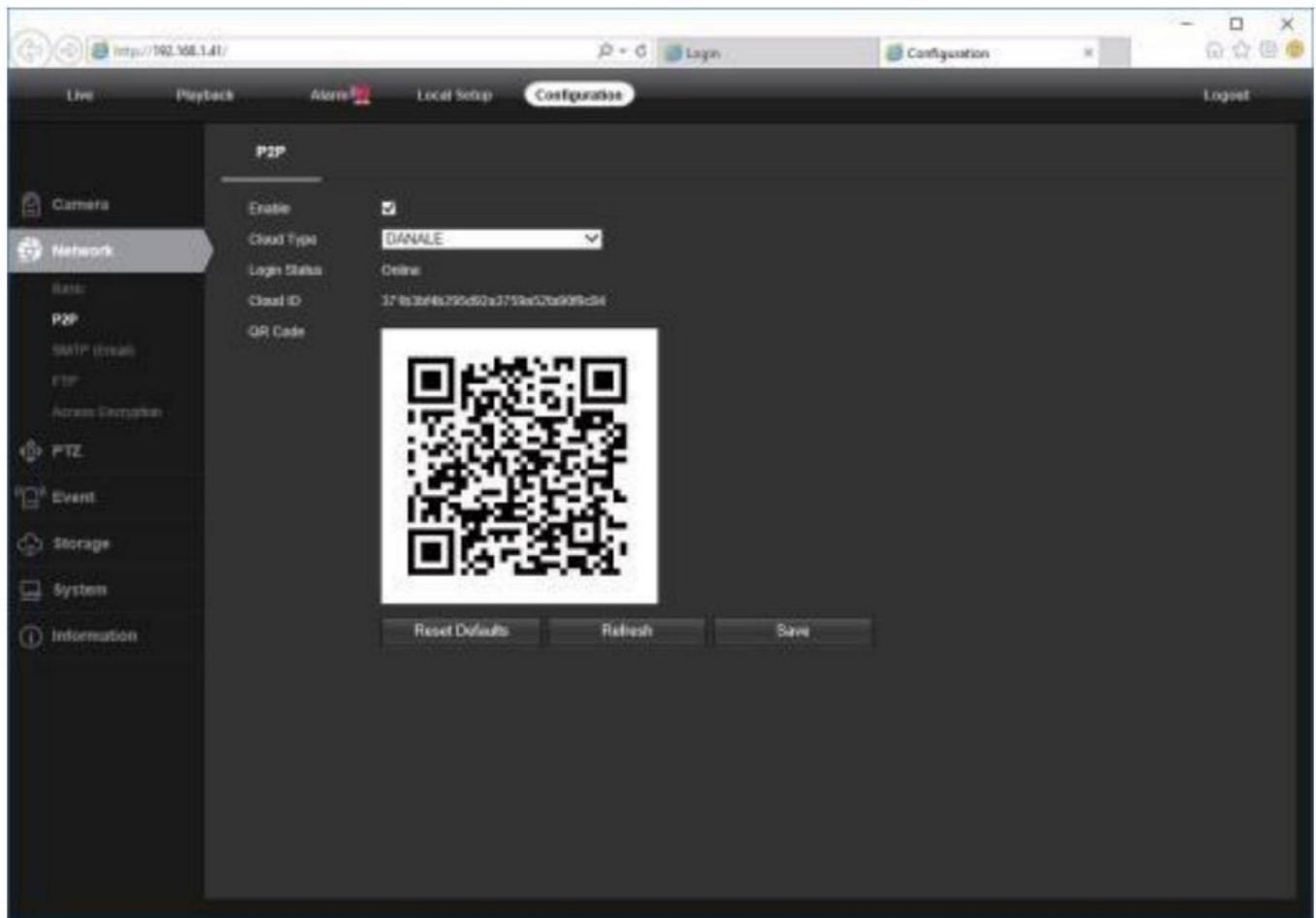
- **Configuration > Event > Video Detection**



When Motion is detected there is a small alarm light pop up beside the Alarm menu. You can also setup an email address or FTP storage server to receive the motion snapshot. (Trigger recording will work only if memory card or NFS NAS connected. )

4) To find the device Cloud ID and QR code for p2p remote access

**Configuration > Network > P2P**



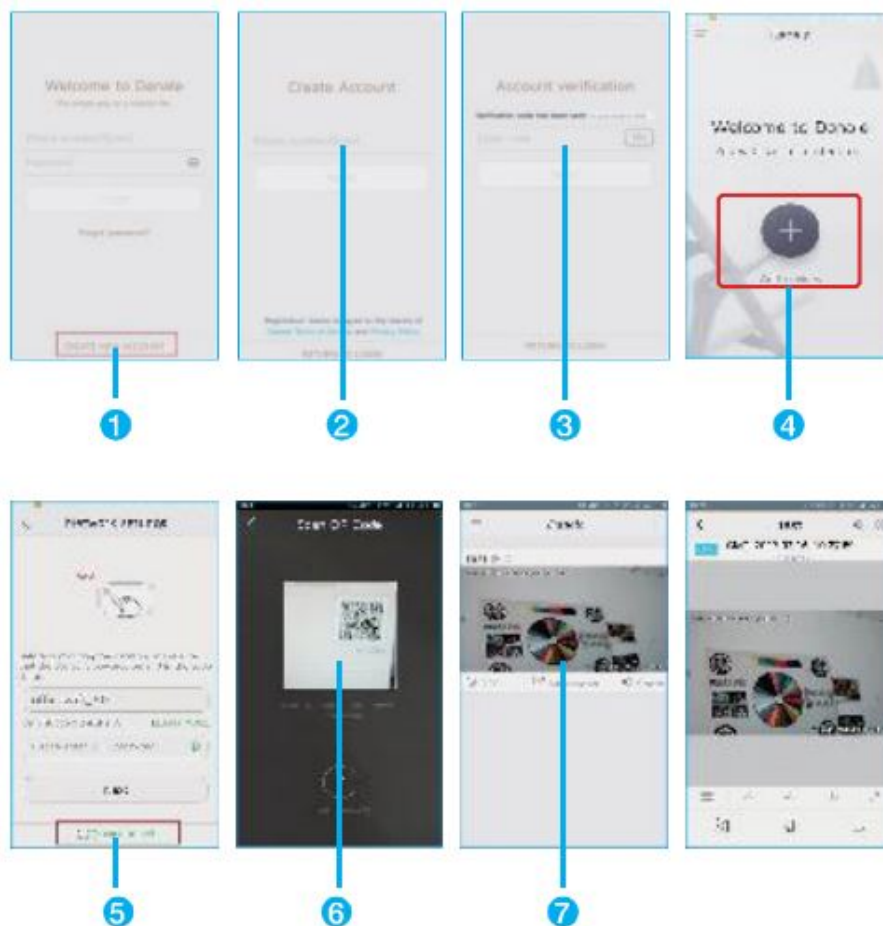
Using the P2P ID and QR code, you can access the camera remotely anywhere via smart phone with Internet access. Please register an account via mobile phone after installing the **Danale** APP from APP Store or Google Play Market, then log in and add your camera to start previewing.

Or you can go to the website <http://www.danale.com/> to register if you need PC remote access. You can download APP from the website to find out more.

Tips: if the Login Status shows Offline, please check your Internet connection and IP camera TCP/IP Network configurations. Please make sure to use a valid DNS server IP in the TCP/IP Network setting.

## Working with mobile device

Visit the Apple App Store or the Google Play Store to download the Danale app for iOS or Android devices. After installation, tap the icon to launch the Danale app. For first time use, please create a new account by following the steps below:



1. For new users, please tap **CREATE NEW ACCOUNT** to register an account.

2.Type in your mobile phone number or email address, then tap **NEXT** .



3. Check your SMS or Email for the verification code, then tap **NEXT** .

4. Tap to **Add devices**

5. Tap QR Code to add to get into the scan camera QR code page, or click **NEXT** to discover the connected local LAN IP camera.

6. Put the IP camera QR code in the app effective scan area, and then give a nickname for the recognized camera.

7. Tap the camera list to start live video.

**Tips:** a. Tap to  check your account profile and configure settings b. To share your camera with your friends or another user, click “” icon and type in or scan his/her Danale account.

**Note:** if you cannot connect the camera, please check your Internet connection and verify the IP address, gateway, and DNS setting in the camera. The Cloud login status should be online, which means the camera has registered to the cloud server. You may also want to connect your phone to WiFi for better performance

## Frequently Asked Questions

1. Why can't I open the default IP address 192.168.1.110 via web browser? Check your computer's IP address before accessing the camera. If the IP address does not match the 192.168.1.x scheme. Make sure the IP address of the camera matches the LAN IP scheme. For example, if the LAN is 192.168.1.xxx, then set the IP camera to 192.168.1.110 and so on. Only IE and Firefox ESR windows computer are supported by the camera.

2. How to reset the password? The default Username: admin, Password: 123456. If you lost the password or would to reset the camera's setting, please install the search tool to search the camera IP and click Reset factory button.

3. How to upgrade the IP camera?

- Ask the supplier for the suitable firmware
- you can use the web browser, search tool, or PC client to upgrade the camera

go to the Configuration > System > update, click browse and select the firmware, then click Upgrade button and wait for the operation to complete.

4. How to fetch the RTSP video stream and http snapshot?

- Main Stream: rtsp://IP:554/h264?username=admin&password=123456
- Sub Stream: rtsp://IP:554/h264cif?username=admin&password=123456
- low resolution snapshot: http://IP/cgi-bin/snapshot.cgi?stream=1

HD snapshot : http://IP/cgi-bin/snapshot.cgi?stream=0

5. Why does the NVR not show image after adding your IP camera?

- Make sure you selected the right protocol and enter the correct username and password when adding the cameras,
- Make sure the NVR and IP camera are the same IP scheme.(eg. NVR:192.168.1.x, and IP camera:192.168.1.y),
- try changing the camera encode mode to H.264 if the NVR can't support H.265. (Configuration -> Camera -> Video > Encode mode: H.264)

6.How to make the NVR record in motion detection mode?

- Enable the IP camera motion detection function via web browser or Search configure tool,
- add the IP camera via ONVIF protocol,
- change the NVR record mode to Motion Detection mode,
- check the NVR screen MD icon and try playback. Please refer to your NVR manual for NVR motion record option.

## Documents / Resources



[VIK VIZ IP Camera](#) [pdf] User Guide  
IP Camera

References

-  [Danale](#)

Manuals+.