



## VIKVIZ House keeping Camera Network Instructions

[Home](#) » [VIKVIZ](#) » VIKVIZ House keeping Camera Network Instructions

### Contents [ [hide](#) ]

- 1 [VIKVIZ House keeping Camera Network](#)
- 2 [Device Search Tool](#)
- 3 [Connect the Camera to Your Network.](#)
- 4 [Check the Camera's IP with SADP Tool or AjDevTool](#)
- 5 [View Your Computer IP](#)
- 6 [Modify the IP Address](#)
- 7 [Login the IE Page](#)
- 8 [After-sale Support](#)
- 9 [Documents / Resources](#)
- 10 [Related Posts](#)




**VIKVIZ House keeping Camera Network**



## Device Search Tool

Computer download and install vikviz “AjDevTools” software tool,  
(<http://www.vikviz.com/NewsDetail/2520633.html>)

Welcome to visit vikviz.com Enquiry teleph

 **VIKVIZ** [Home](#) [Products](#) [News & Support](#) [About VIKVIZ](#) [Contact Us](#) [Locate Us](#)

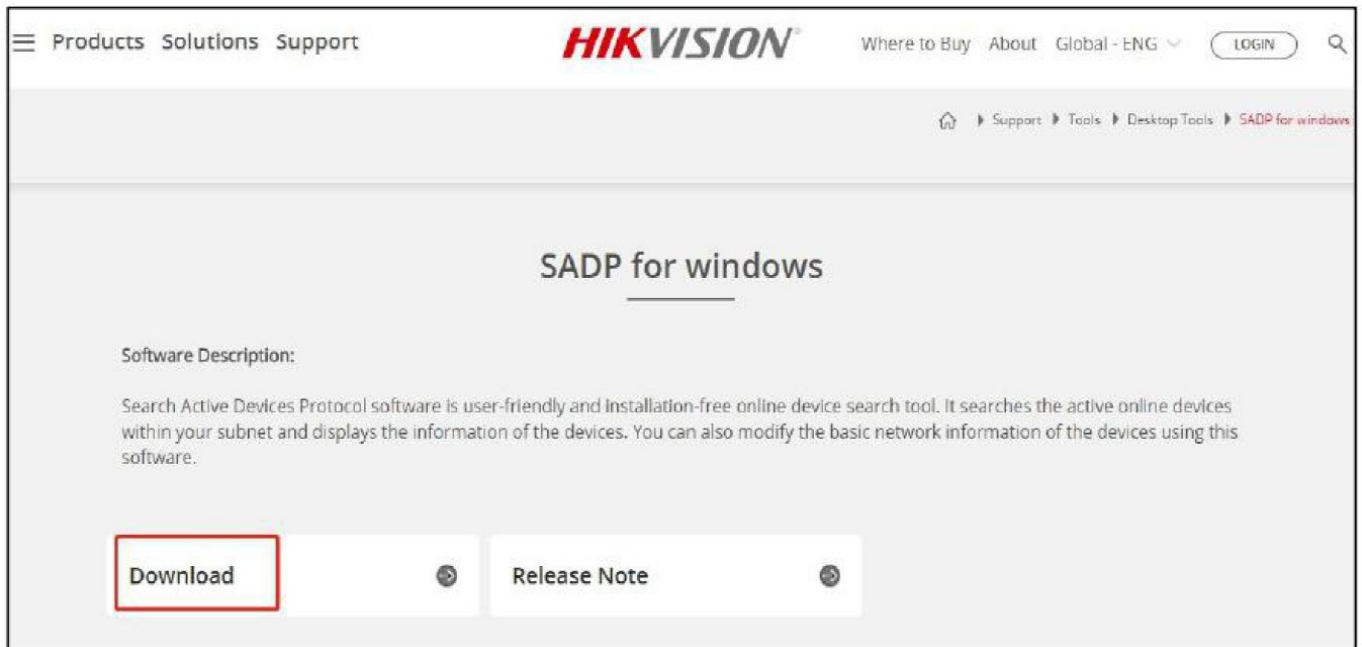
[Home](#) >> [Files](#) >> [AjDevTools for VIKVIZ Camera Search Tools](#)

### AjDevTools for VIKVIZ Camera Search Tools

Author: vikviz.com Click: 1 Time: 2021-03-20 17:24:26

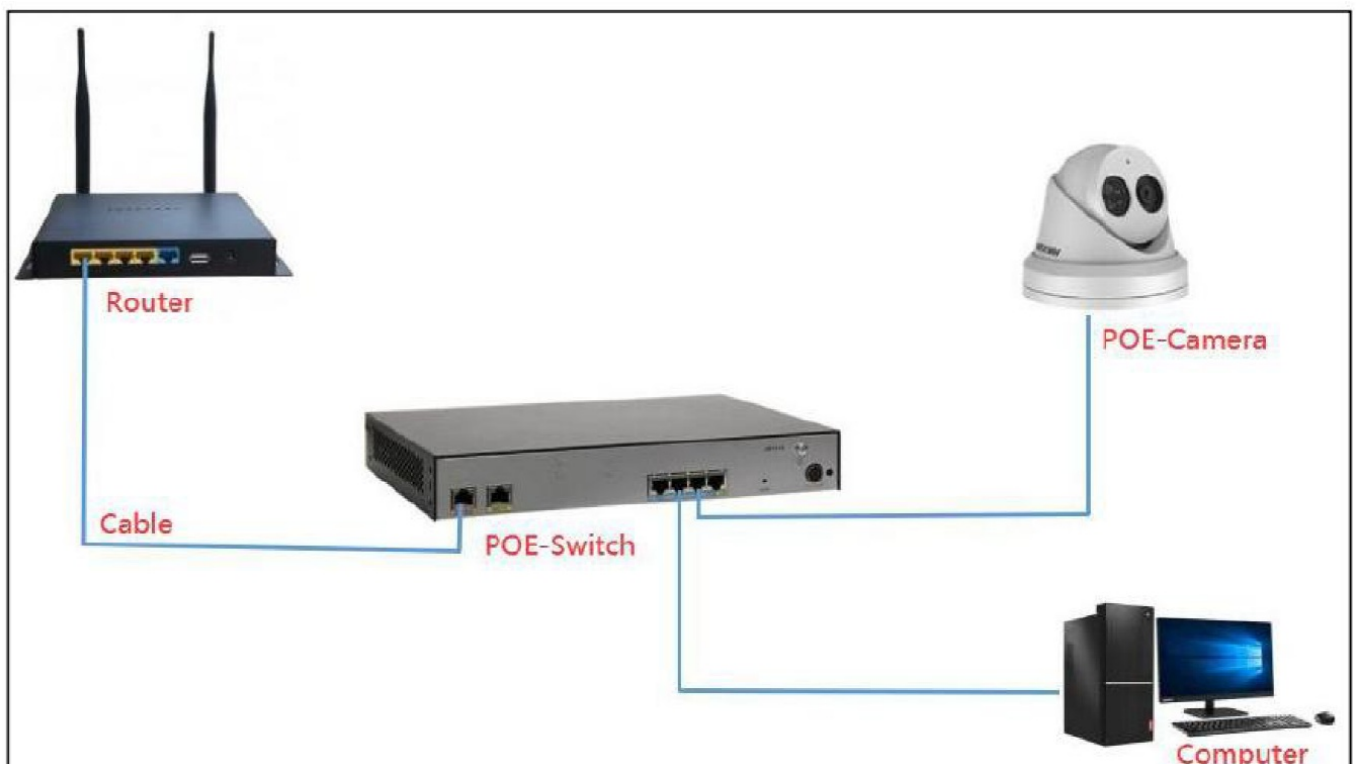
AjDevTools for VIKVIZ Camera Search Tools  
[Click here to download](#)

Or you can use Hikvision “SADP” tool (<https://www.hikvision.com/en/search/?q=SADP>)



## Connect the Camera to Your Network.

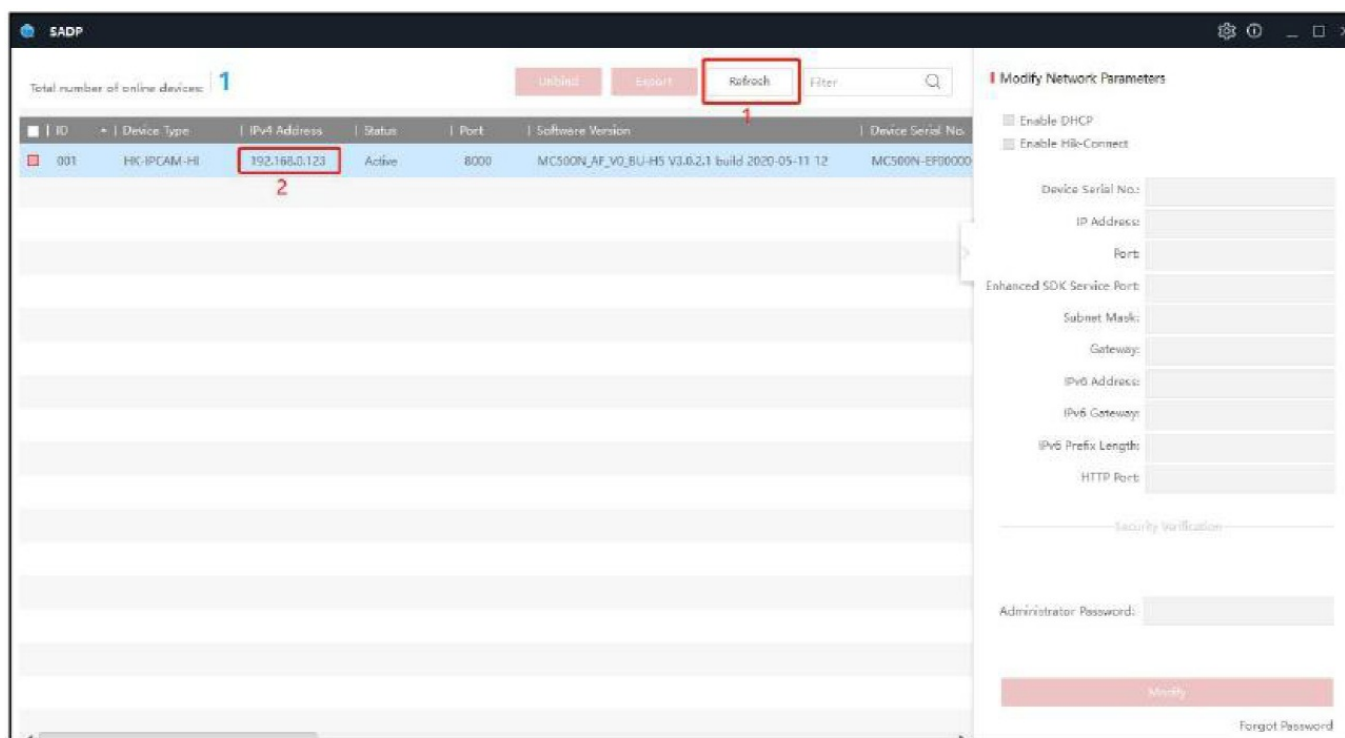
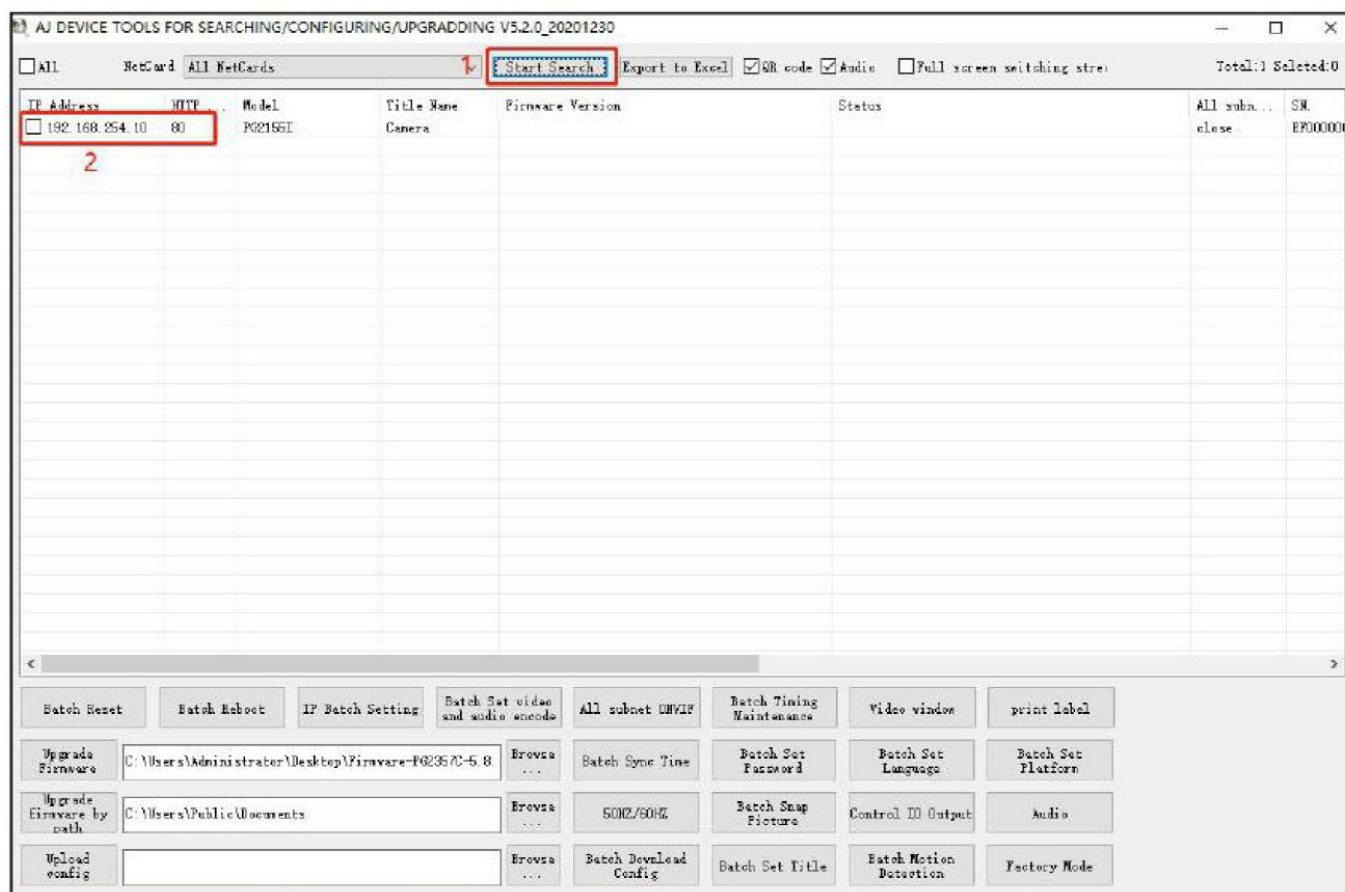
Please keep the computer and camera on the same LAN—Please use a network cable to connect, do not use Wi-Fi.



## Check the Camera's IP with SADP Tool or AjDevTool

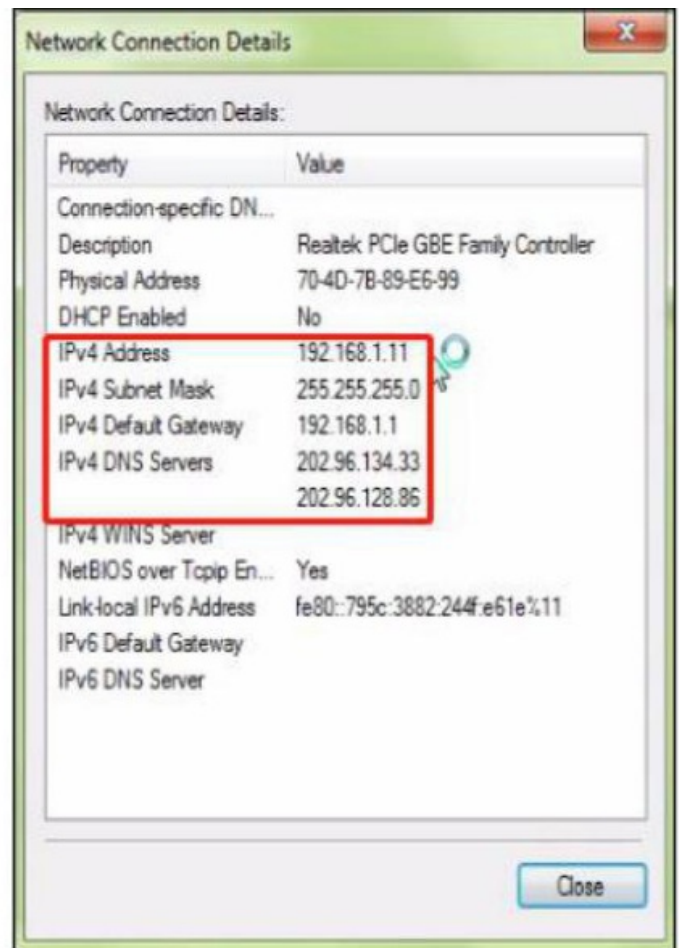
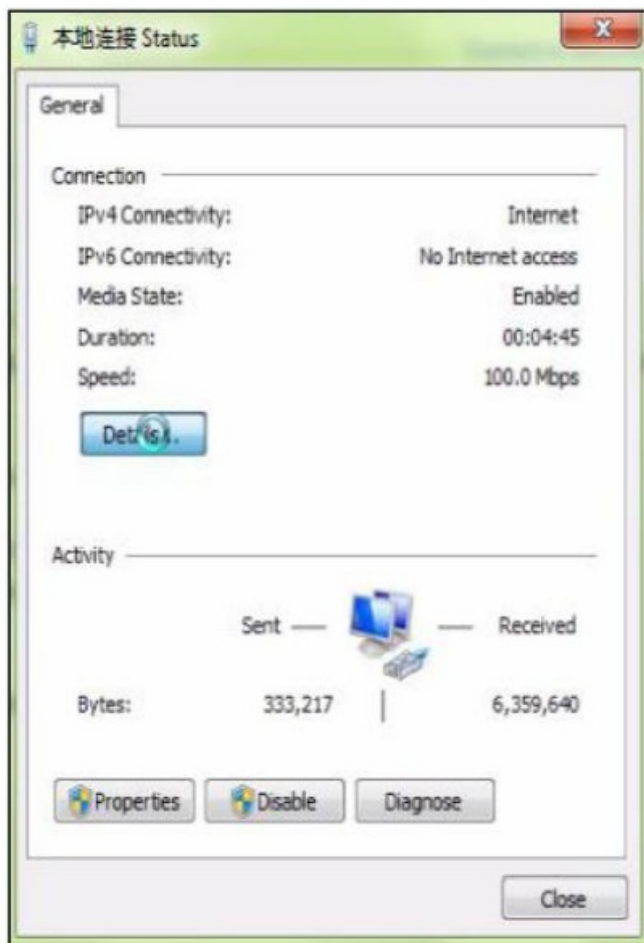
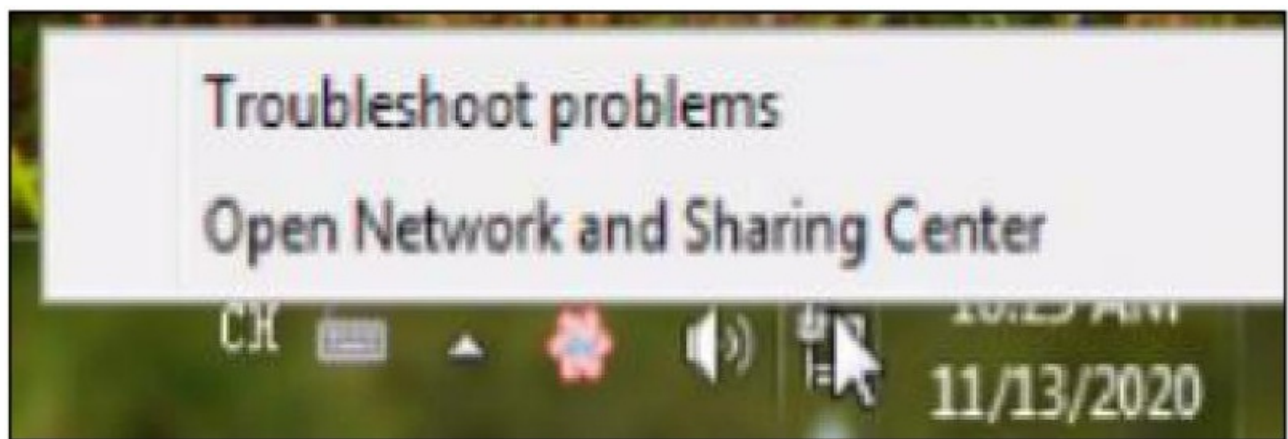
After installation, opening the software and click the Start Search

1. Search for the IP address of the camera;
2. Query the IP address of the camera.



## View Your Computer IP

1. Query your computer IP address
2. Open Network and Sharing Center
3. Details
4. View your computer's IPV4 Address, Subnet Mask and Gateway

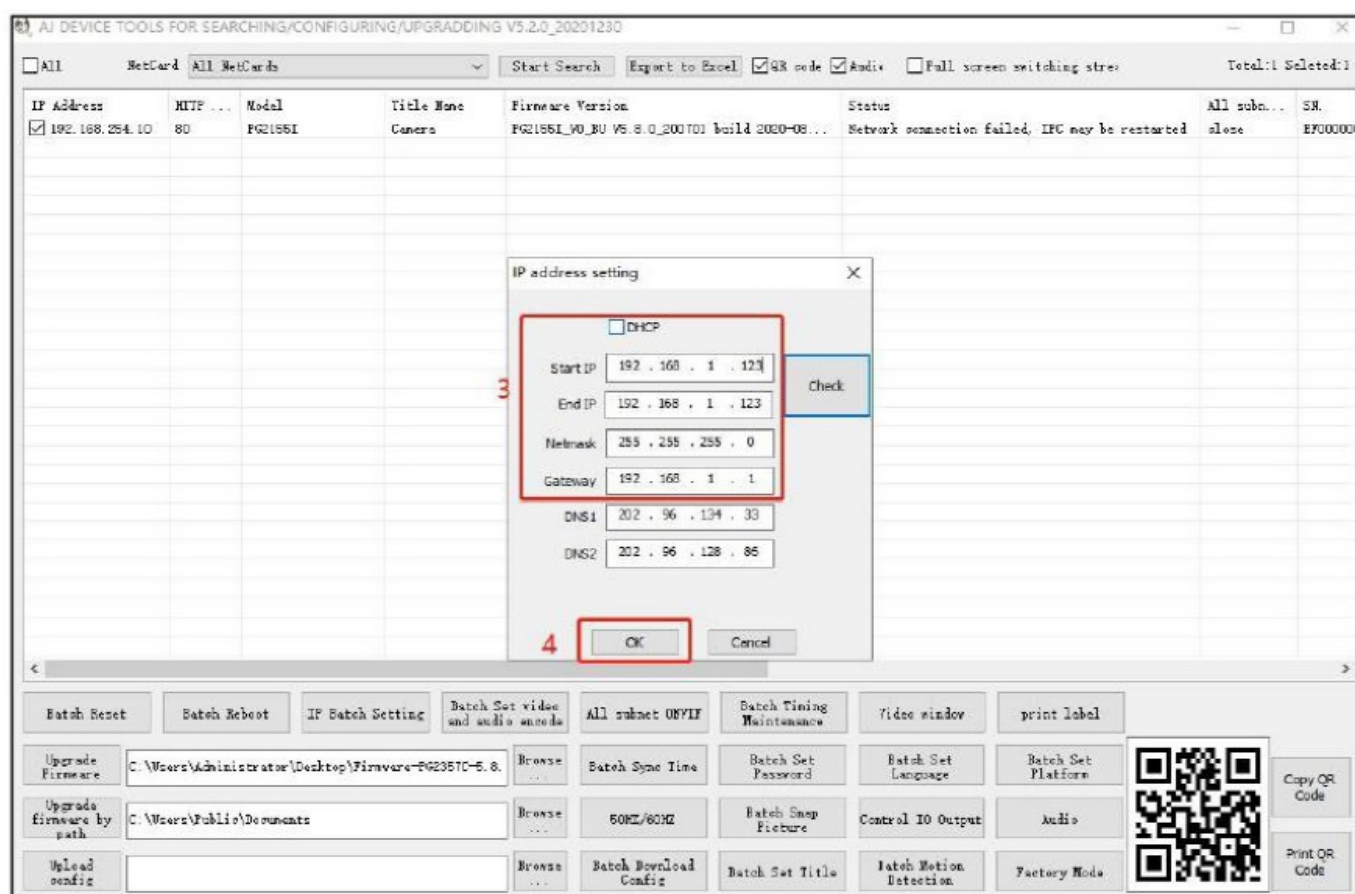
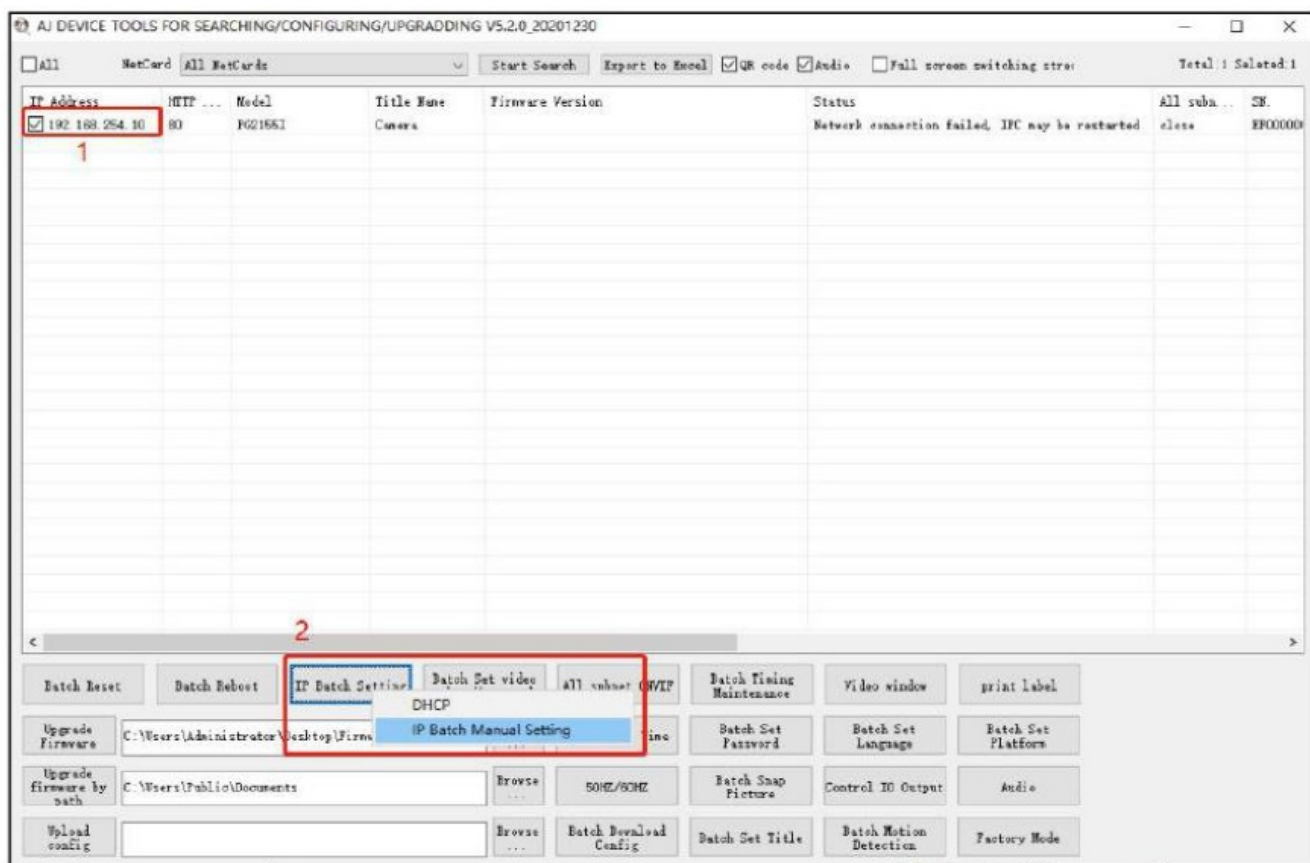


## Modify the IP Address

Modify the IP address of the camera and computer in the same network segment.

### AjDevTool Setting Method I

1. Select the IP address of the camera;
2. Click IP Batch Manual Setting IP address;
3. Modify the IP address of the camera to be in the same network segment as the IP address of the computer or choose DHCP to obtain an IP address automatically;
4. Select OK—Successfully modified.



## SADP Tool Setting Method

Setting method:

1. Select the IP address of the camera
2. Modify the IP address and gateway of the camera



3. Enter the camera password: 123456
4. Select Modify–Parameters modification completed

The first screenshot shows the SADP interface with a table of online devices. The first device is selected, and its IP address (192.168.1.123) is highlighted. The right sidebar shows the 'Modify Network Parameters' form, which is pre-filled with the device's current settings. The form includes fields for IP Address, Port, Subnet Mask, Gateway, IPv6 Address, IPv6 Gateway, IPv6 Prefix Length, and HTTP Port. Below these fields are checkboxes for 'Enable DHCP' and 'Enable Hik-Connect'. At the bottom of the sidebar, there is a 'Security Verification' section with an 'Administrator Password' field and a 'Modify' button. The second screenshot shows the same interface after the 'Modify' button has been clicked. The 'Modify' button is now disabled, and the 'Administrator Password' field is empty. The 'Modify' button is now a red button with the text 'Modify'.

ID	Device Type	IPv4 Address	Status	Port	Software Version	Device Serial No.
001	Hik-IPCAM-Hi	192.168.1.123	Active	8000	MC500N_AF_V0_BU-H5 V3.0.2.1 build 2020-05-11 12	MC500N-EF00000

Modify Network Parameters

☐ Enable DHCP  
☐ Enable Hik-Connect

Device Serial No.: MC500N-EF0000000512184

IP Address: 192.168.1.123  
Port: 8000  
Subnet Mask: 255.255.255.0  
Gateway: 192.168.1.1  
IPv6 Address:   
IPv6 Gateway:   
IPv6 Prefix Length: 0  
HTTP Port: 80

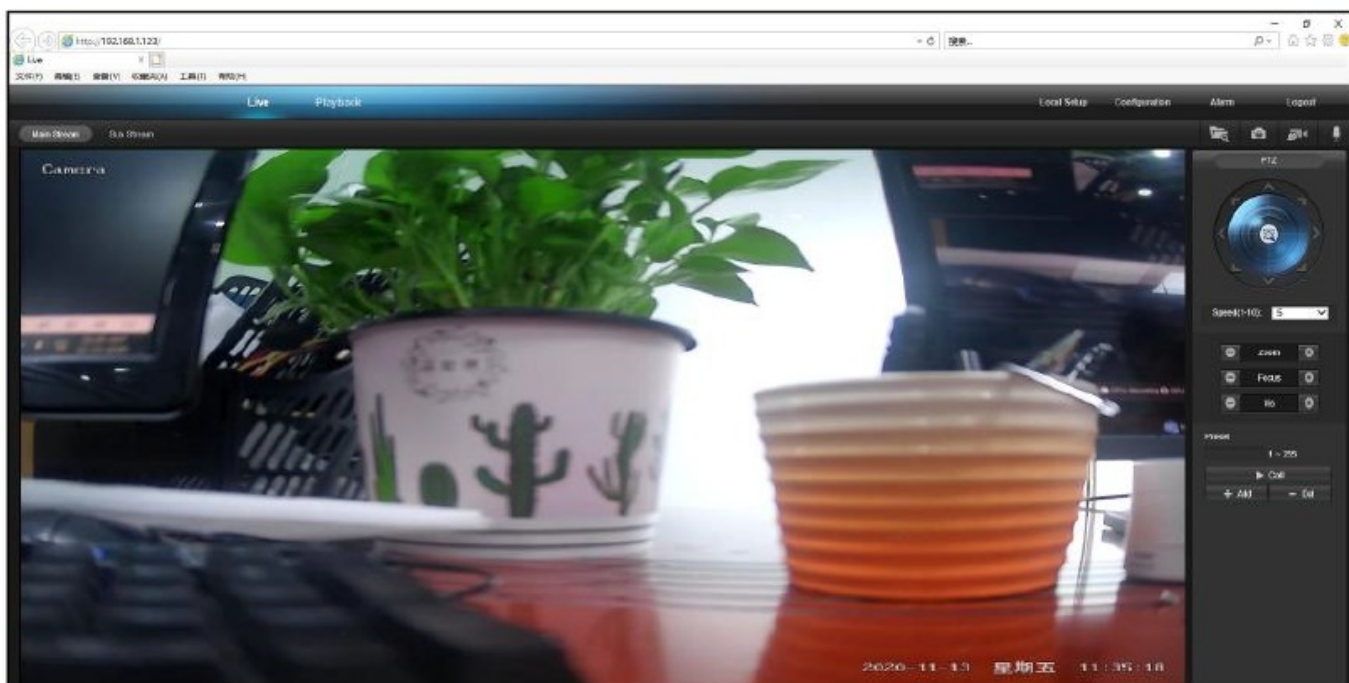
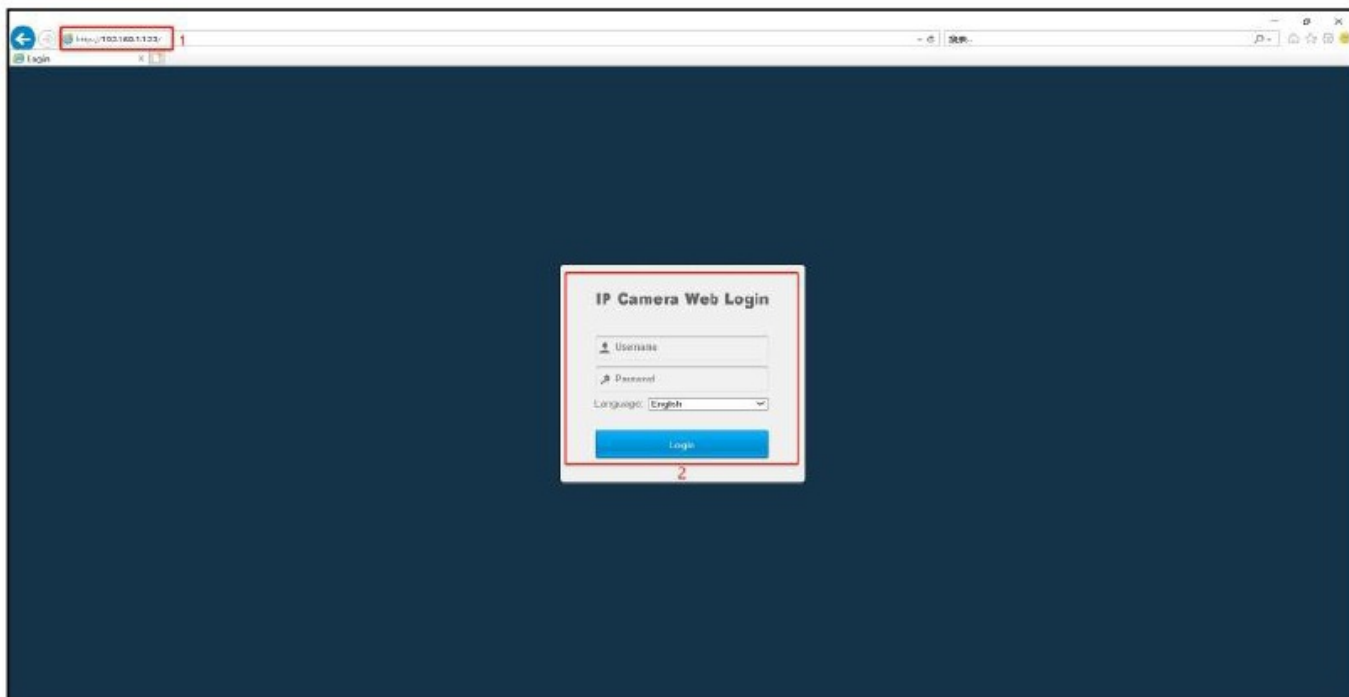
Security Verification

Administrator Password:   
Modify

Forgot Password

## Login the IE Page

Double click the camera IP address or Enter the camera IP address, (ex.192.168.1.110) in the browser URL bar to visit the web page login interface  
Login with the username: admin and password: 123456.



## After-sale Support

If you need tech support, please contact us to [after-sale@vikviz.com](mailto:after-sale@vikviz.com). Also you can download the user manual from the item description page on Amazon.

More details for further setting, you can visit our site (<https://www.vikviz.com>)

Youtube ([https://www.youtube.com/channel/UC-DmSQknDI\\_DDfLLDwOAPlw](https://www.youtube.com/channel/UC-DmSQknDI_DDfLLDwOAPlw))

Facebook (<https://www.facebook.com/Vikviz-Store-109417197949500>)







[VIKVIZ House keeping Camera Network](#) [pdf] Instructions  
House keeping Camera Network