



ViewSonic VS19276 Display User Guide

[Home](#) » [Viewsonic](#) » ViewSonic VS19276 Display User Guide 

Contents

- [1 ViewSonic VS19276 Display User Guide](#)
- [2 Product Information](#)
- [3 Product Usage Instructions:](#)
- [4 WHAT'S IN THE BOX](#)
- [5 INSTALLATION](#)
- [6 CONNECTION](#)
- [7 FCC Compliance Statement](#)
- [8 Documents / Resources](#)
 - [8.1 References](#)

ViewSonic VS19276 Display User Guide



Product Information

VX2428 Display

The VX2428 Display is a high-performance monitor designed for professional and personal use. It has a 24-inch display with full HD resolution of 1920×1080, making it perfect for gaming, watching movies, or working on graphic design projects. The monitor has a sleek and modern design with a thin bezel and can be tilted for comfortable viewing.

The product comes with a Quick Start Guide, available in multiple languages including English, German, Swedish, Finnish, Polish, and Hungarian. The Limited Warranty may or may not be included in the packaging, depending on the country or region. If the Limited Warranty is not included, it can be found on the ViewSonic website.

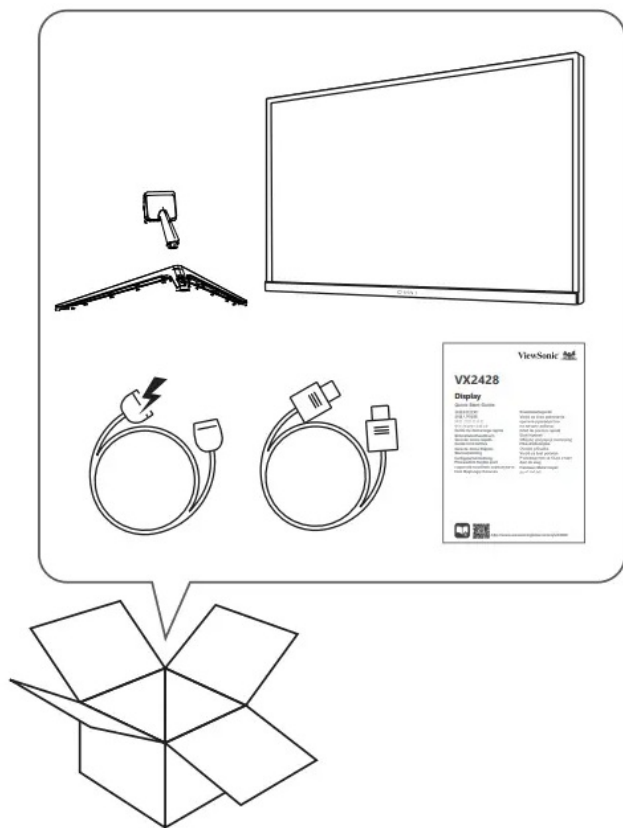
The VX2428 Display complies with FCC Rules and Industry Canada ICES-003 Compliance. It also conforms to CE Conformity for European Countries and EMC Directive 2014/30/EU and Low Voltage Directive 2014/35/EU. The product has been designed and manufactured in compliance with Directive 2011/65/EU of the European Parliament and the Council on the restriction of the use of certain hazardous substances in electrical and electronic equipment (RoHS2 Directive).

Product Usage Instructions:

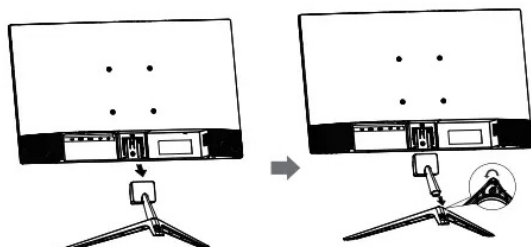
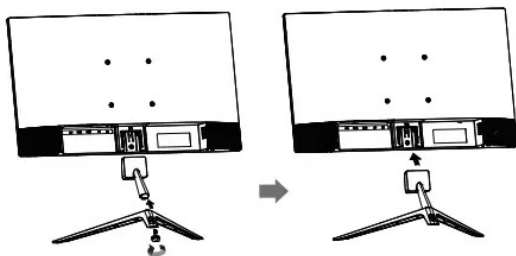
1. Unbox the VX2428 Display and remove all packaging materials.
 2. Connect the power cable to the monitor and plug it into an electrical outlet that supplies 100-240 Vac 50/60 Hz.
-
1. Connect one end of the included VGA or HDMI cable to your computer or laptop and the other end to the corresponding input port on the monitor.
 2. Press the power button on the monitor to turn it on. The monitor will automatically detect the input source and display the image.
-
1. Adjust the tilt angle of the monitor for comfortable viewing.
 2. Use the on-screen menu to adjust the brightness, contrast, color, and other settings according to your preference.

1. To turn off the monitor, press the power button again.

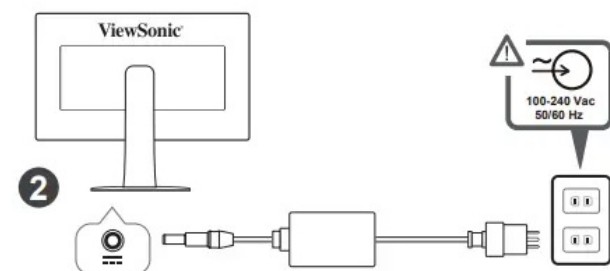
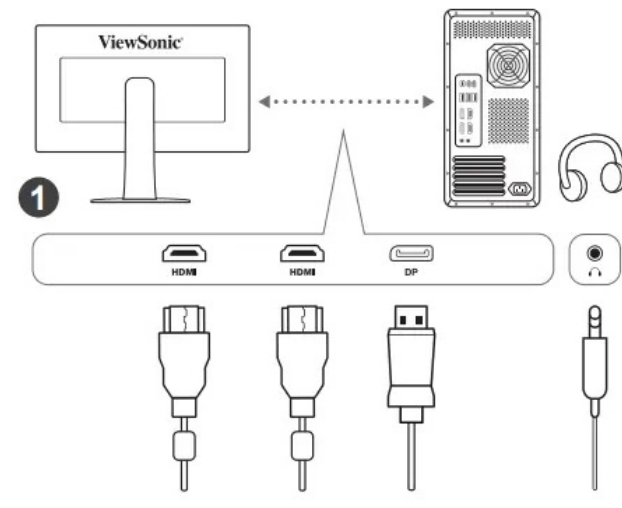
WHAT'S IN THE BOX



INSTALLATION



CONNECTION



- Depending on the country or region, the Limited Warranty may or may not be included in the packaging. If the Limited Warranty is not included in the packaging, it can be found on the ViewSonic website.
- When connecting the display to an external device (PC, etc.), please use the included video cable and accessories and follow the instructions in this manual.
- The standard of the included power accessory and video cable may differ depending On your Country, region, or environment. For details on the included items, please refer to our product page and user guide. (if the space is not enough, remove the sentence is acceptable)
- Please contact our Customer Support Center for inquiries about the product.
- ViewSonic shall not be liable for technical or editorial errors or omissions contained herein.

FCC Compliance Statement

This device complies with part 15 of FCC Rules. Operation is subject to the following two conditions
this device may not cause harmful interference,
this device must accept any interference received, including interference that may cause undesired operation.

Industry Canada ICES-003 Compliance: CAN ICES-003(B) / NMB-003(B)

CE Conformity for European Countries

The device complies with the EMC Directive 2014/30/EU and Low Voltage Directive 2014/35/EU.

Declaration of RoHS2 Compliance

This product has been designed and manufactured in compliance with Directive 2011/65/EU of the European Parliament and the Council on the restriction of the use of certain hazardous substances in electrical and

electronic equipment (RoHS2 Directive) and is deemed to comply with the maximum concentration values issued by the European Technical Adaptation Committee (TAC)

www.viewsonic.com




<http://www.viewsonicglobal.com/qNX2428>



Model No. VS19276 / PIN' VX2428 copyright a 2022 ViewSonic corpuation_ All rights

Read More About This Manual & Download PDF:

Documents / Resources

	ViewSonic VS19276 Display [pdf] User Guide VS19276 Display, VS19276, Display
---	---

References

- [ViewSonic - VX2428J VX2428J - COMING SOON](#)