



ViewSonic VS18188 ViewBoard Cast Button User Guide

[Home](#) » [Viewsonic](#) » ViewSonic VS18188 ViewBoard Cast Button User Guide 

Contents

- [1 ViewSonic VS18188 ViewBoard Cast Button](#)
- [2 Device Requirements](#)
- [3 Pairing](#)
- [4 ViewBoard IFP/CDE Pairing](#)
- [5 Screen Sharing](#)
- [6 Regulatory and Service Information](#)
- [7 Customer Service](#)
- [8 Documents / Resources](#)
- [9 Related Posts](#)



ViewSonic VS18188 ViewBoard Cast Button

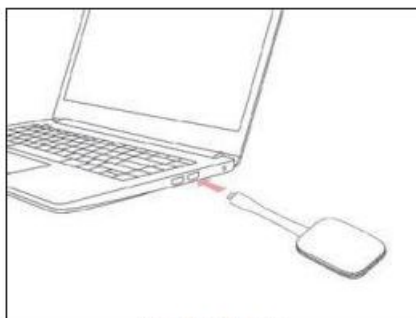


Device Requirements

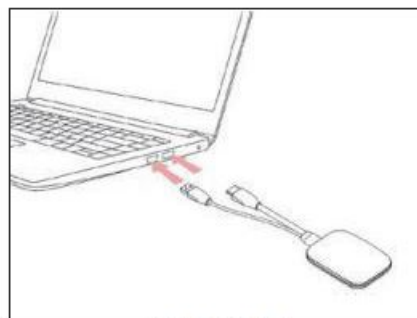
- Windows 7/8/10
- MacOS 10.10 or later
- ViewSonic IFP/CDE series device(s) with vCastReceiver installed and activated.
- VS18188: Device supports fully featured USB Type-C function that covers USB & DP.
- VS18189: Device supports HDMI & USB Type-A.

Pairing

Windows PC and MacBook Pairing



VS18188
Figure 1



VS18189
Figure 2

1. Plug-in the ViewBoard® Cast Button into your Windows PC or MacBook to pair.
 1. For VS18188: Please plug-in to the USB Type C port (Figure 1).
 2. For VS18189: Please plug-in to both the HDMI out and USB Type A ports (Figure 2).

NOTE:When the product is connected to the notebook for screen projection, the notebook must be kept on the desktop and not carried with you.

2. If it is the first time to pair the ViewBoard® Cast Button with your Windows PC, please double click “ViewBoard Cast.exe” in: PC > CD Drive > ViewBoard Cast.

NOTE: If running on a MacBook, please enter the user password to access the application installation

permission.

3. For PC, with the application installed, ViewBoard® Cast will launch automatically after the ViewBoard® Cast Button is plugged into the PC. .
4. The pairing dialogue box will pop up on your PC. Please enter the Network Name, Password, and the vCastReceiver IP address shown on the IFP/CDE device(s) home screen.
5. Click OK to complete the pairing of the ViewBoard® Cast Button and the IFP/CDE device(s) (Figure 3).



6. Remove the ViewBoard® Cast Button and then plug it in again to start sharing (Figure 4).



7. If the ViewBoard® Cast Button has been paired, and you would like to pair it with another IFP/CDE device, please click the “Pairing-Switch Button” at the bottom right corner (Figure 5) and re-enter the network information to re-pair the ViewBoard® Cast Button (Figure 6). After the ViewBoard® Cast Button is re-paired, please remove it and plug it in again to start sharing.



ViewBoard IFP/CDE Pairing

You can also plug-in the ViewBoard® Cast Button into IFP/CDE device(s) to pair if the IFP/CDE device(s) is connected to a LAN (Ethernet cable).

For VB-WPS-001:

1. Attach the USB Type C to USB Type A adapter to the VS18188 ViewBoard® Cast Button (Figure 7).
2. Then plug the ViewBoard® Cast Button into the IFP/ CDE device's USB port for pairing.



NOTE: The USB Type C to USB Type A adapter is for optional IFP/CDE device pairing only.

For VS18189:

1. Plug the USB Type A cable into the IFP/CDE device's USB port for pairing.
2. A “Pairing” dialogue box will appear.
3. Enter the Network Name and Password, then select Save to pair (Figure 8).



Screen Sharing



Figure 1



Figure 2

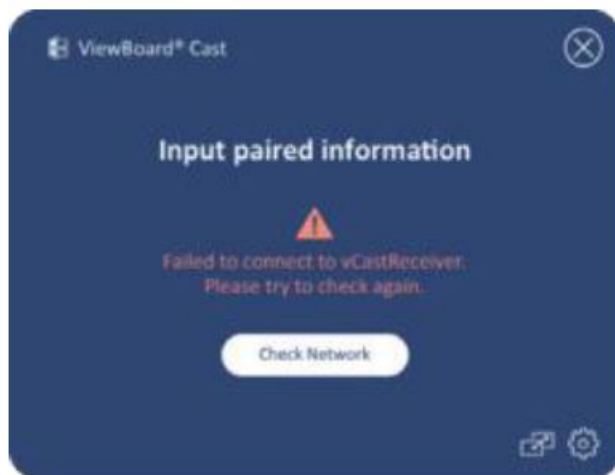


Figure 3



Figure 4

NOTE: Ensure the ViewBoard® Cast Button is plugged into your Windows PC/MacBook.

1. When the ViewBoard® Cast Button is connecting to your device, the LED indicator will be flashing blue. Your device is ready for screen sharing when the LED indicator changes to static blue (Figure 1).
2. Tap the button of the ViewBoard® Cast Button to share your device's screen to another display. The LED indicator will change from blue to white when it's successfully connected and sharing (Figure 2).
3. If the LED indicator only flashes white and fails to connect, please ensure the IFP/CDE device(s) are working correctly and that the pairing information is entered correctly (Figure 3 and 4).

Regulatory and Service Information

FCC Compliance Statement

NOTE: This equipment has been tested and found to comply with the limits for a Class B digital device, pursuant to part 15 of the FCC Rules. These limits are designed to provide reasonable protection against harmful interference in a residential installation. This equipment generates uses and can radiate radio frequency energy and, if not installed and used in accordance with the instructions, may cause harmful interference to radio communications. However, there is no guarantee that interference will not occur in a particular installation. If this equipment does cause harmful interference to radio or television reception, which can be determined by turning the equipment off and on, the user is encouraged to try to correct the interference by one or more of the following measures:

- Reorient or relocate the receiving antenna.
- Increase the separation between the equipment and receiver.
- Connect the equipment into an outlet on a circuit different from that to which the receiver is connected.
- Consult the dealer or an experienced radio/TV technician for help

Changes or modifications not expressly approved by the party responsible for compliance could void the user's authority to operate the equipment. This device complies with Part 15 of the FCC Rules. Operation is subject to the following two conditions:

1. this device may not cause harmful interference, and
2. this device must accept any interference received, including interference that may cause undesired operation.

This device is acting as slave and operating in the 2.4 GHz (2412 ~2462 MHz) band. Ad Hoc function is supported but not able to operate on non-US frequencies.

RF Exposure Warning Statements:

This equipment complies with FCC radiation exposure limits set forth for an uncontrolled environment. This equipment shall be installed and operated with minimum distance 20cm between the radiator & body.

Canadian Regulatory Statements

This device contains licence-exempt transmitter(s)/ receiver(s) that comply with Innovation, Science and Economic Development Canada's licence-exempt RSS(s). Operation is subject to the following two conditions:

1. This device may not cause interference.
2. This device must accept any interference, including interference that may cause undesired operation of the device.

Radio Frequency Exposure Statement for IC

The device has been evaluated to meet general RF exposure requirements. The device can be used in mobile exposure conditions. The min separation distance is 20cm.

CE Conformity for European Countries

The mark shown to the right is in compliance with the Waste Electrical and Electronic Equipment Directive 2012/19/EU (WEEE). The mark indicates the requirement NOT to dispose of the equipment as unsorted municipal waste, but use the return and collection systems according to local law.

Customer Service

For technical support or product service, see the table below or contact your reseller.

Australia /www.viewsonic.com/au/

Documents / Resources

