

ViewSonic®
ViewSonic LX Series
Smart LED Projector



ViewSonic LX Series Smart LED Projector User Guide

[Home](#) » [Viewsonic](#) » ViewSonic LX Series Smart LED Projector User Guide 

Contents

- [1 ViewSonic LX Series Smart LED Projector](#)
- [2 Installation](#)
- [3 Documents / Resources](#)
 - [3.1 References](#)
- [4 Related Posts](#)

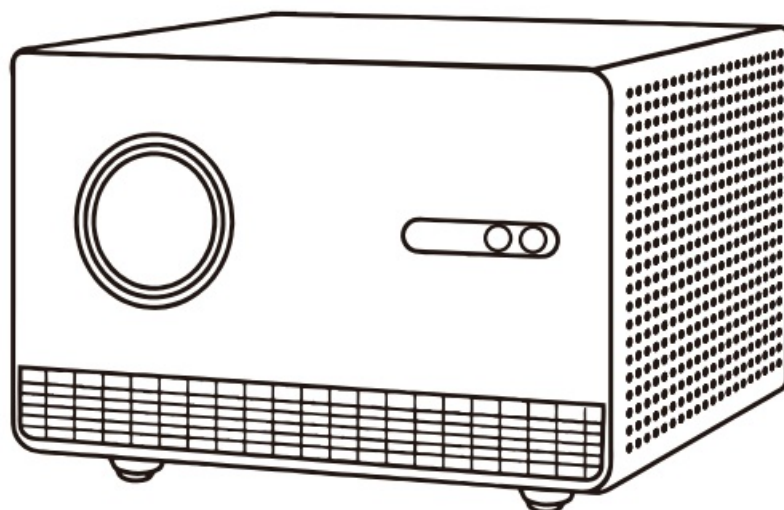


ViewSonic LX Series Smart LED Projector

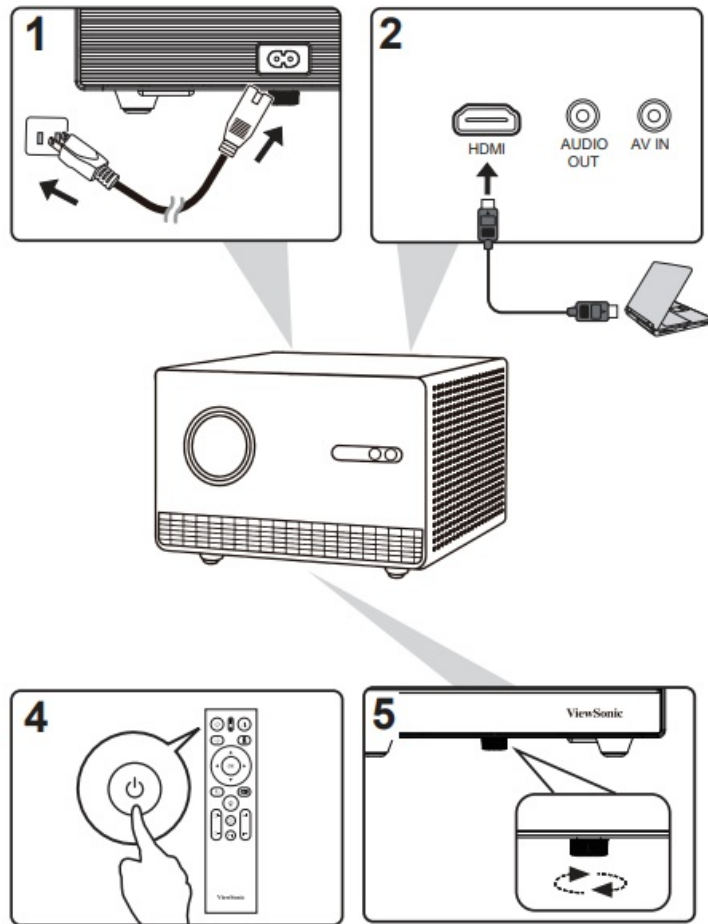


Quick Start Guide

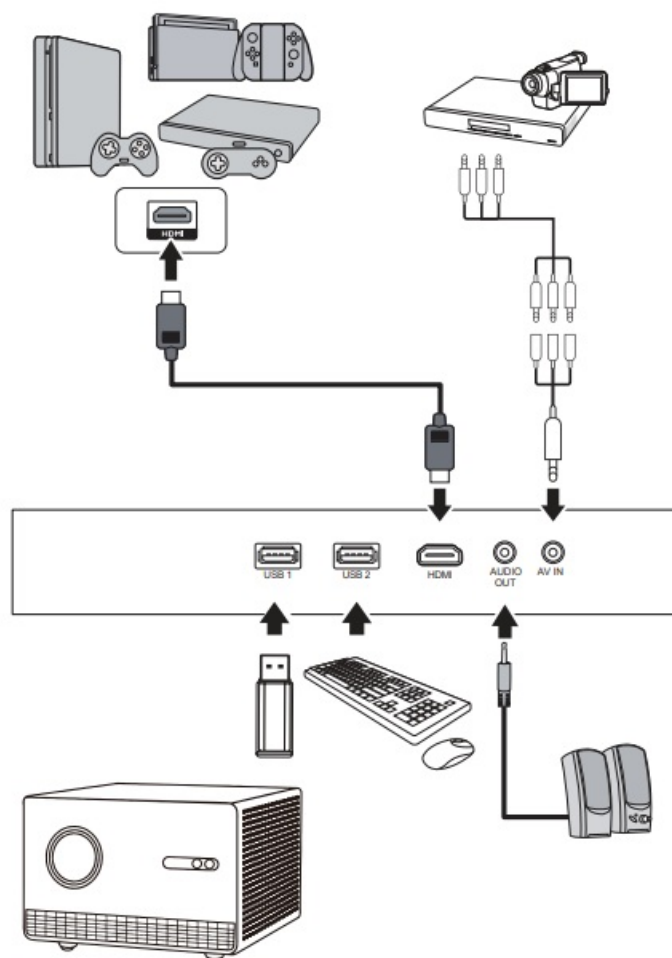
Installation



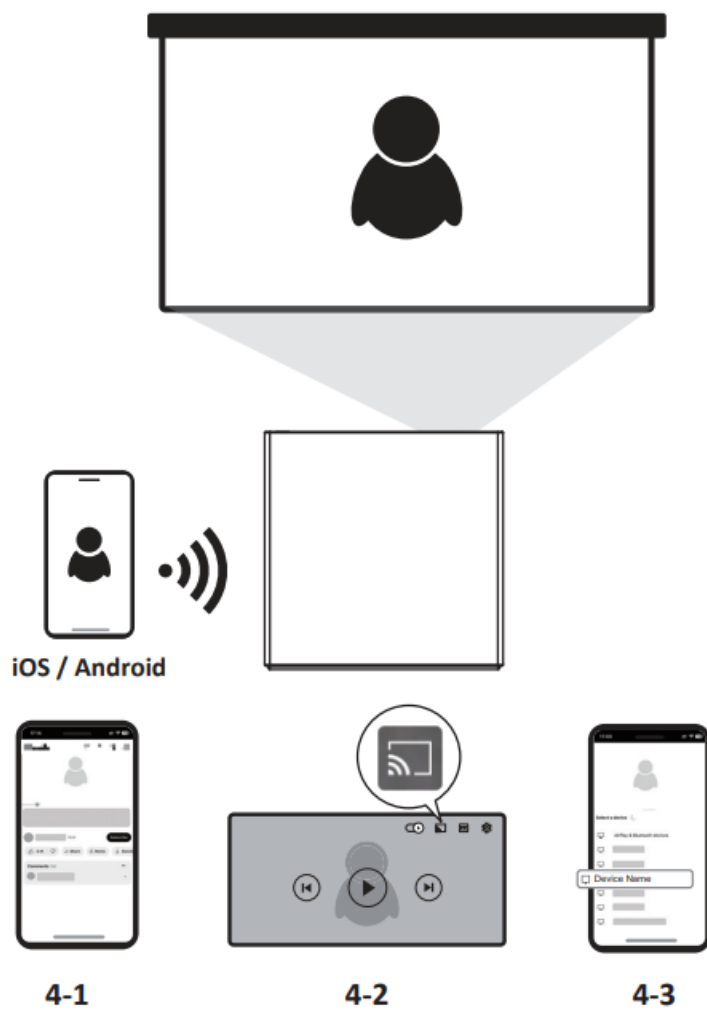
2



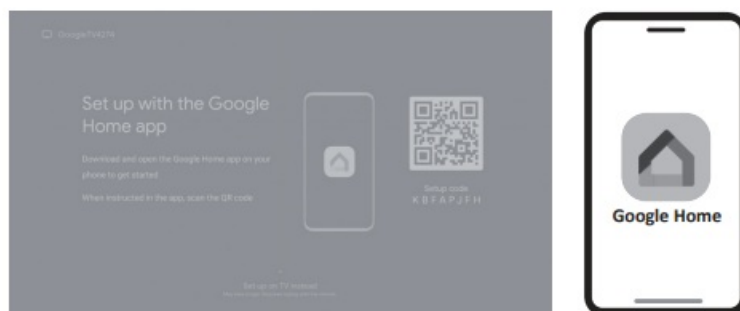
3



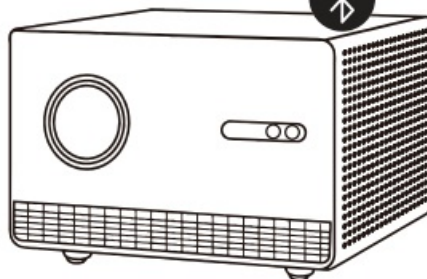
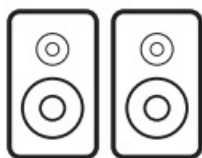
4



5



6



7

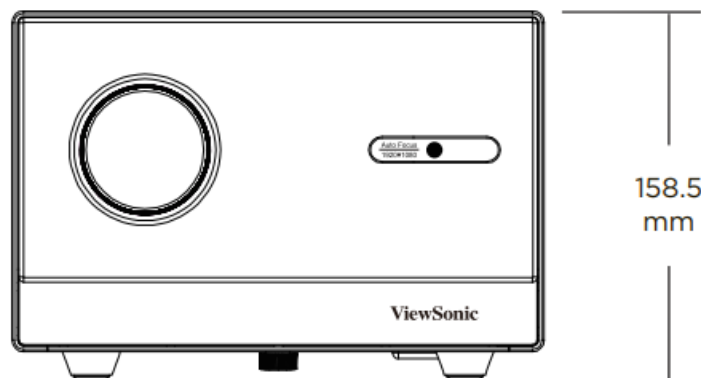
Tripod Hole: M4 x 7 (Max. L = 7 mm)
Unit: mm



227.5
mm



228 mm

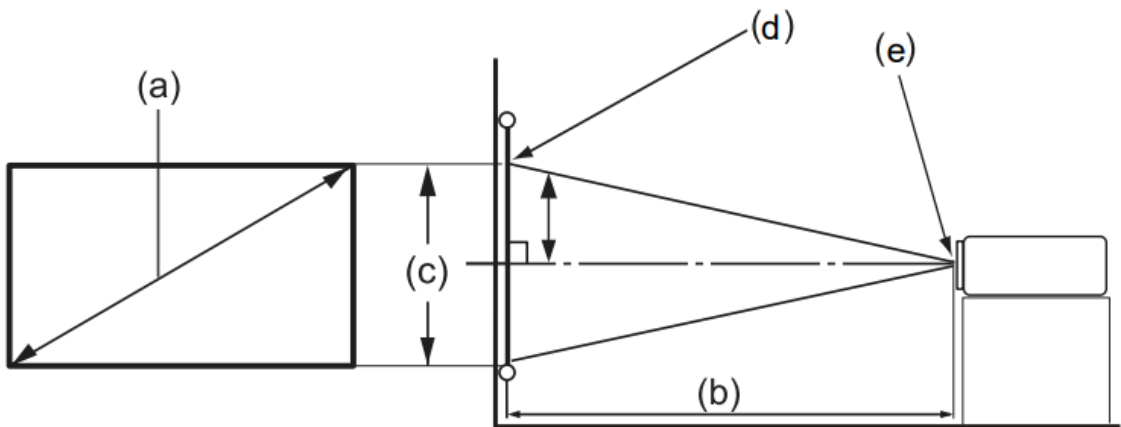
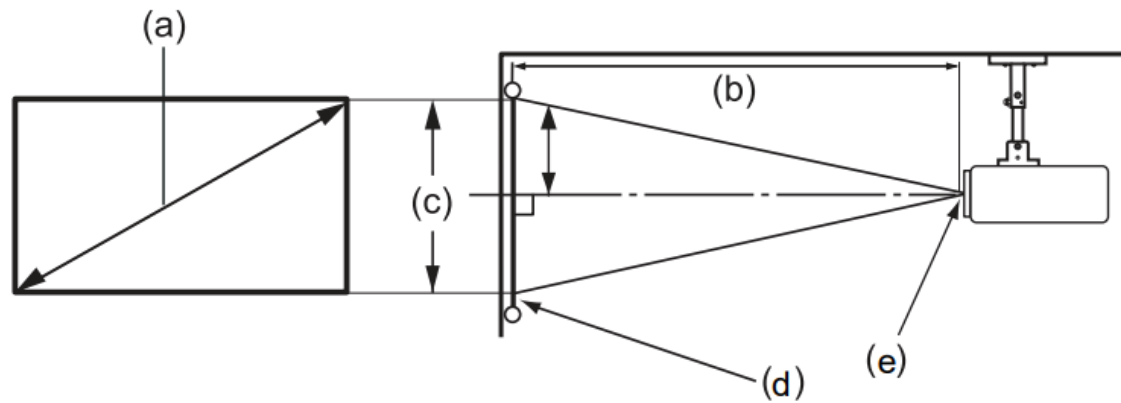


158.5
mm

ViewSonic

8

•16:9 image on a 16:9 screen



(e) = Screen
(f) = Center of Lens

(a) Screen Size		16:9 Image on a 16:9 Screen							
		(b) Projection distance				(c) Image height		(d) Vertical offset	
		min.		max.					
inch	mm	inch	mm	inch	mm	inch	mm	inch	mm
50	127	51.5	130.9	54	136.2	24.5	62.3	43.58	111
60	152	62.6	158.9	63	160.5	29.4	74.7	52.29	133
70	178	72.6	184.4	74	186.7	34.3	87.2	61.01	155
80	203	82.8	210.4	86	217.6	39.2	99.6	69.73	177
90	229	93.5	237.5	96	244.8	44.1	112	78.44	199
100	254	103.0	261.5	107	270.9	49	125	87.16	221
110	279	113.6	288.6	116	295.3	53.9	137	95.87	244
120	305	125.0	317.6	128	324.3	58.8	149	104.6	266
130	330	135.1	343.1	138	350.2	63.7	162	113.3	288
140	356	146.1	371.2	149	378.9	68.6	174	122	310

FCC Compliance Statement

This device complies with part 15 of FCC Rules. Operation is subject to the following two conditions:

1. this device may not cause harmful interference,
2. this device must accept any interference received, including interference that may cause undesired operation.

Industry Canada ICES-003 Compliance: CAN ICES(B) / NMB(B)

CE Conformity for European Countries

C€ The device complies with the EMC Directive 2014/30/EU, Low Voltage Directive 2014/35/EU, Ecodesign Directive 2009/125/EC and Radio Equipment Directive 2014/53/EU. The full Declaration of Conformity can be found at the following website:

https://www.viewsonicglobal.com/public/products_download/safety_compliance/projector/VS20103_CE_DOC.pdf

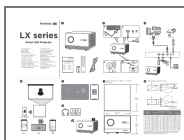
Declaration of RoHS2 Compliance

This product has been designed and manufactured in compliance with Directive 2011/65/EU of the European Parliament and the Council on restriction of the use of certain hazardous substances in electrical and electronic equipment (RoHS2 Directive) and is deemed to comply with the maximum concentration values issued by the European Technical Adaptation Committee (TAC).




- ViewSonic Europe Limited Haaksbergweg 75 1101 BR Amsterdam Netherlands
- +31 (0) 650608655
- EPREL@viewsoniceurope.com
- <https://www.viewsonic.com/eu/>
- VS20103_QSG_1a_20240627
- Copyright © 2024 ViewSonic Corporation.
- All rights reserved.

Documents / Resources



[ViewSonic LX Series Smart LED Projector](#) [pdf] User Guide
LX Series, LX Series Smart LED Projector, Smart LED Projector, LED Projector, Projector

References

-  [ViewSonic](#)
- [User Manual](#)

[Manuals+](#), [Privacy Policy](#)

This website is an independent publication and is neither affiliated with nor endorsed by any of the trademark owners. The "Bluetooth®" word mark and logos are registered trademarks owned by Bluetooth SIG, Inc. The "Wi-Fi®" word mark and logos are registered trademarks owned by the Wi-Fi Alliance. Any use of these marks on this website does not imply any affiliation with or endorsement.