

ViewSonic
See the difference™
LSC601WU
Series
Laser
Projector



ViewSonic LSC601WU Series Laser Projector User Guide

[Home](#) » [Viewsonic](#) » ViewSonic LSC601WU Series Laser Projector User Guide 

Contents

- [1 ViewSonic LSC601WU Series Laser Projector](#)
- [2 Specifications](#)
- [3 WHAT IN BOX](#)
- [4 Powering On the Projector](#)
- [5 PORT](#)
- [6 Lens Adjustment](#)
- [7 DIMENSION](#)
- [8 FCC](#)
- [9 FAQs](#)
- [10 CONTACT INFORMATION](#)
- [11 Documents / Resources](#)
 - [11.1 References](#)
- [12 Related Posts](#)



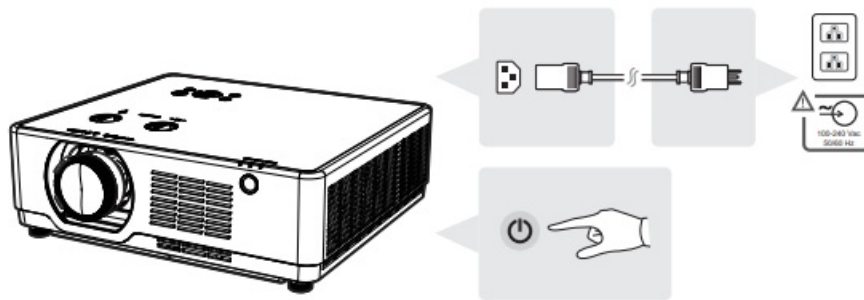
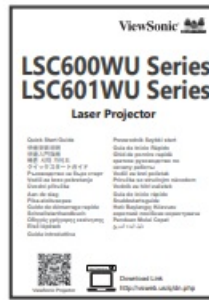
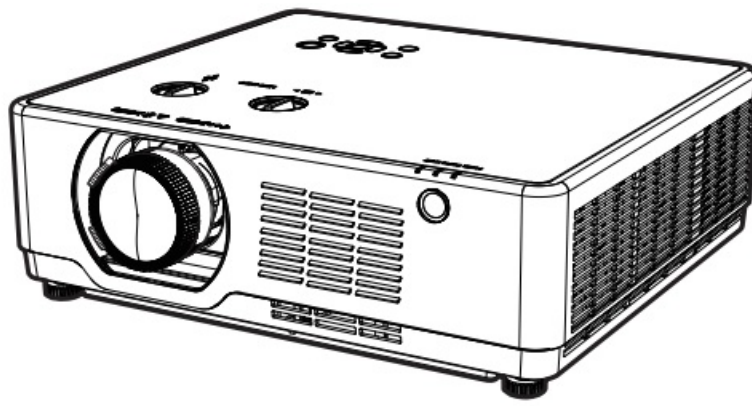
ViewSonic LSC601WU Series Laser Projector



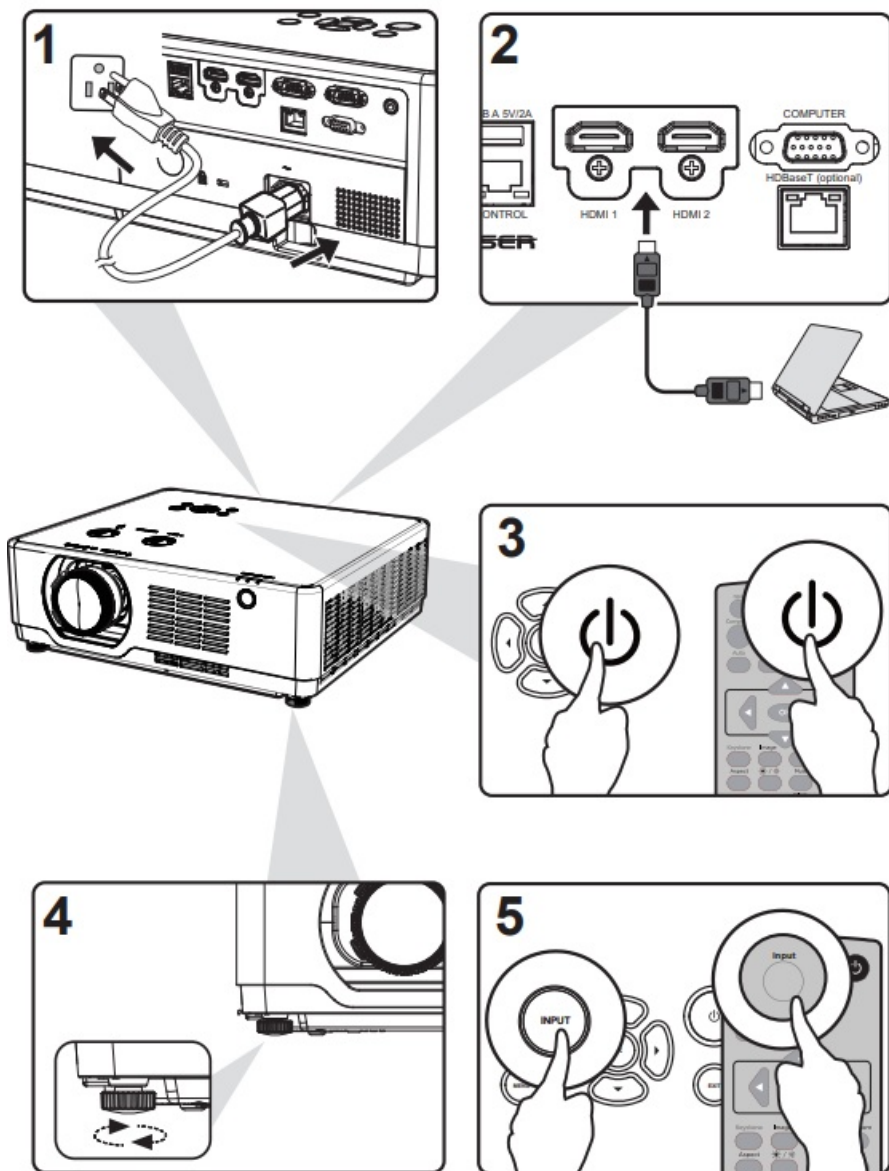
Specifications

- **Series:** LSC600WU, LSC601WU
- **Type:** Laser Projector
- **Power Input:** 100-240 Vac, 50/60 Hz
- **Control Ports:** HDMI 1, HDMI 2, RS232
- **Optional Port:** HDBaseT
- **Service Port:** USB A 5V/2A

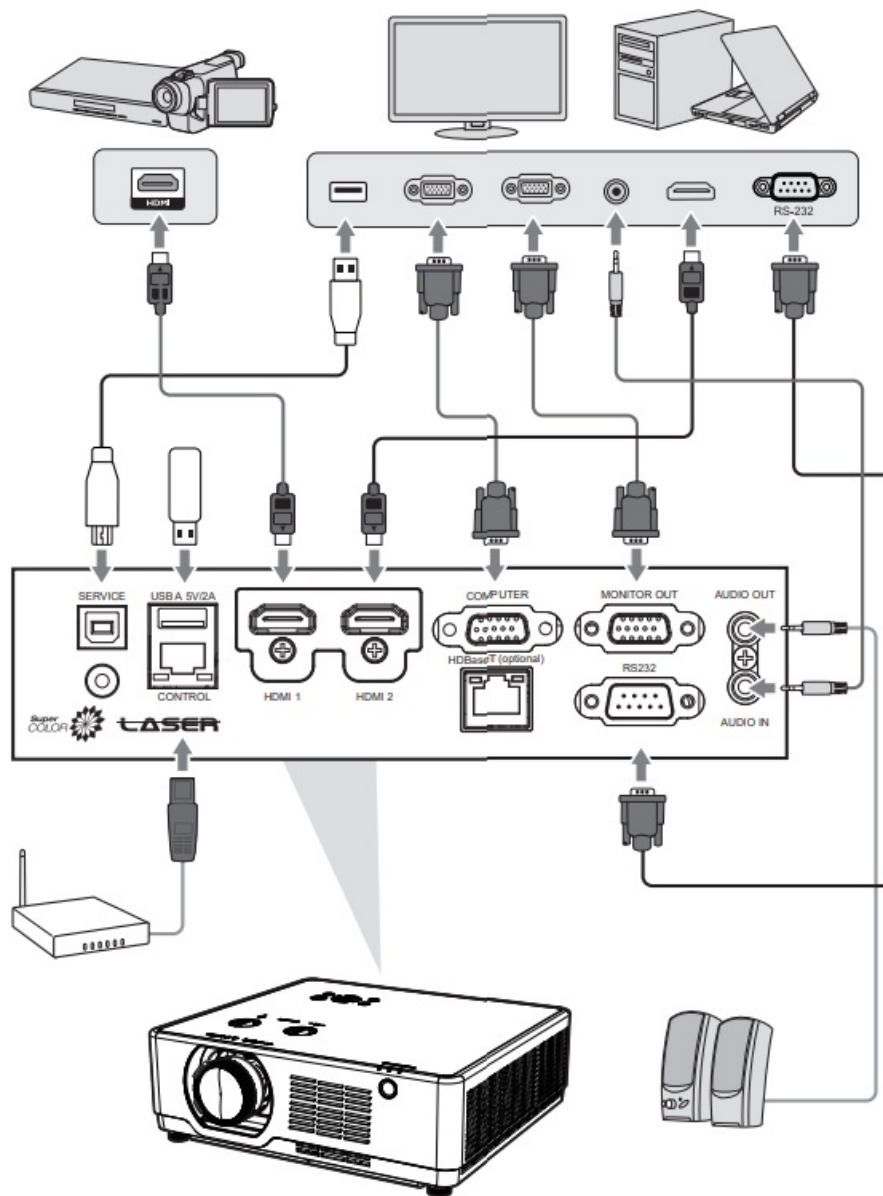
WHAT IN BOX



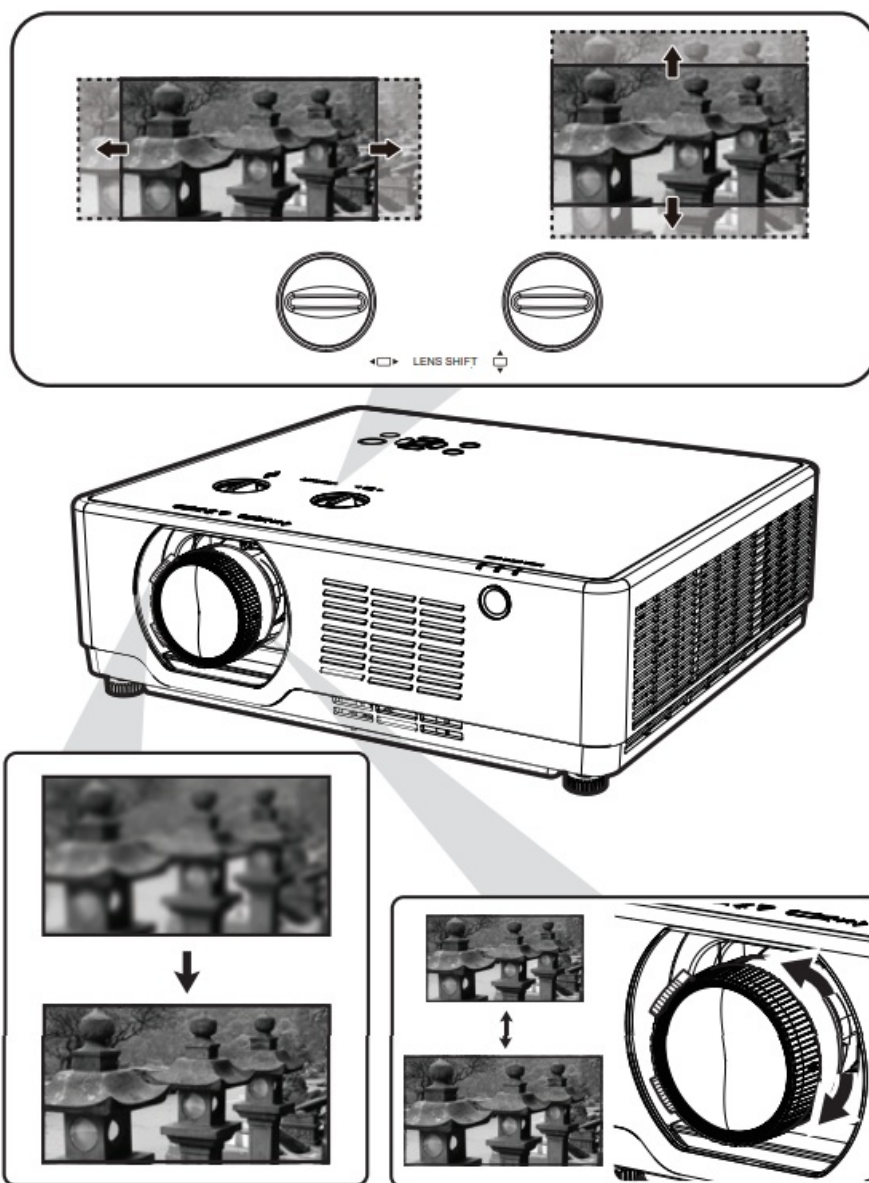
Powering On the Projector



PORT

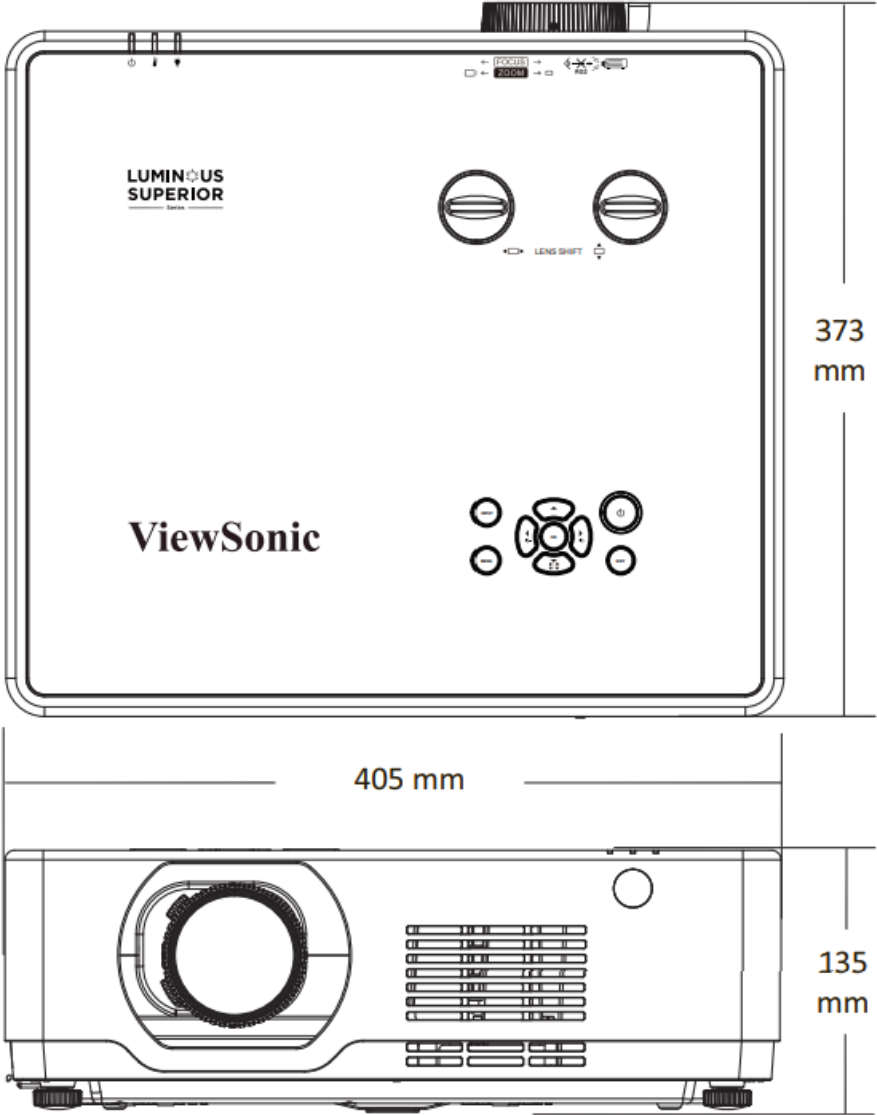


Lens Adjustment

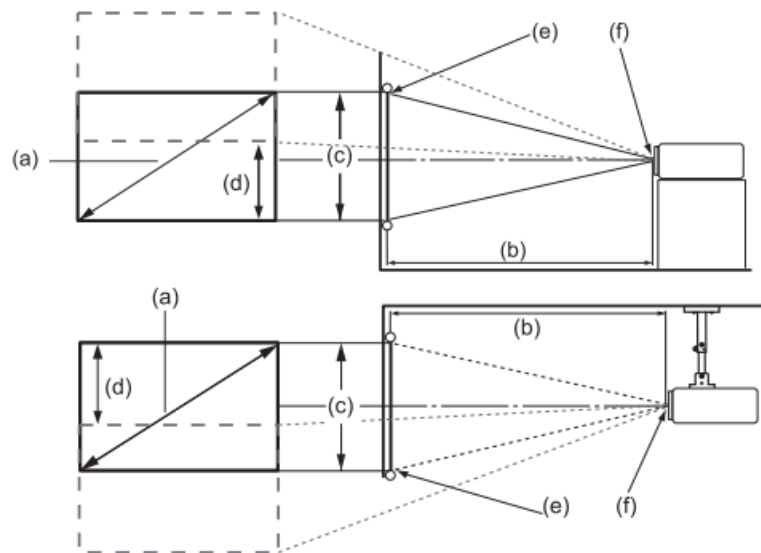


DIMENSION

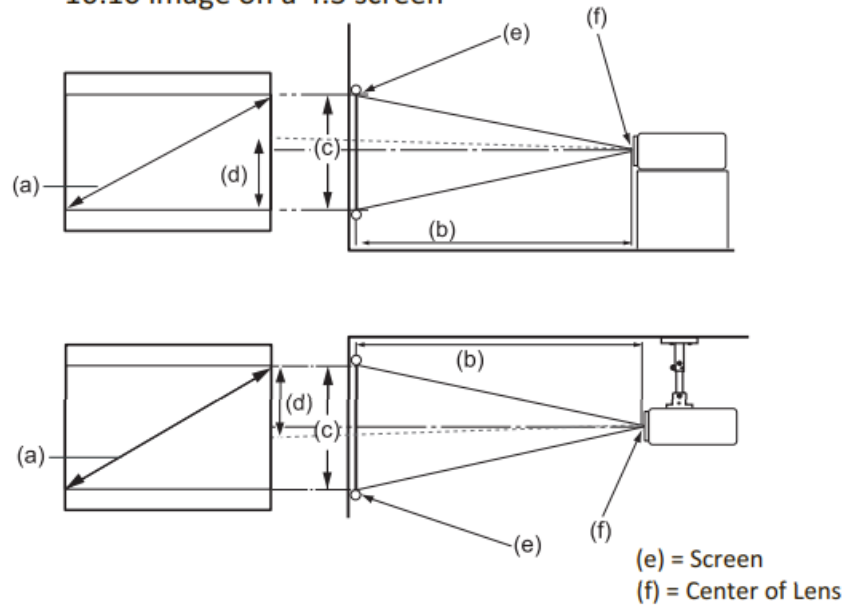
Mounting Screw: M4 x 8 (Max. L = 8 mm)
Unit: mm



•16:10 image on a 16:10 screen



•16:10 image on a 4:3 screen



(a) Screen Size		16:10 Image on a 16:10 Screen							
		(b) Projection distance				(c) Image height		(d) Vertical offset	
inch	mm	inch	mm	inch	mm	inch	mm	inch	mm
30	762	26.76	680	44.15	1121	15.90	404	7.15	182
60	1524	54.68	1389	89.43	2272	31.80	808	14.31	363
70	1778	63.98	1625	104.53	2655	37.10	942	16.69	424
80	2032	73.28	1861	119.62	3038	42.40	1077	19.08	485
90	2286	82.59	2098	134.72	3422	47.70	1212	21.46	545
100	2540	91.89	2334	149.82	3805	53.00	1346	23.85	606
120	3048	110.50	2807	180.01	4572	63.60	1615	28.62	727
150	3810	138.41	3516	225.29	5722	79.50	2019	35.77	909
180	4572	166.33	4225	270.58	6873	95.40	2423	42.93	1090
200	5080	184.94	4697	300.77	7640	106.00	2692	47.70	1212
250	6350	231.46	5879	376.25	9557	132.50	3365	59.62	1514
300	7620	277.98	7061	451.73	11474	159.00	4039	71.55	1817
(a) Screen Size		16:10 Image on a 4:3 Screen							
		(b) Projection distance				(c) Image height		(d) Vertical offset	
inch	mm	inch	mm	inch	mm	inch	mm	inch	mm
30	762	25.91	658	42.24	1073	15.00	381	6.73	171
60	1524	51.73	1314	84.33	2142	29.96	761	13.48	342
70	1778	60.43	1535	98.50	2502	34.96	888	15.73	400
80	2032	69.11	1755	112.64	2861	39.98	1015	17.99	457
90	2286	77.74	1975	126.72	3219	44.98	1142	20.24	514
100	2540	86.38	2194	140.80	3576	49.97	1269	22.49	571
120	3048	103.66	2633	168.96	4292	59.97	1523	26.99	685
150	3810	129.57	3291	211.20	5364	74.96	1904	33.73	857
180	4572	155.49	3949	253.44	6437	89.95	2285	40.48	1028
200	5080	172.76	4388	281.60	7153	99.94	2539	44.98	1142
250	6350	215.96	5485	352.00	8941	124.93	3173	56.22	1428
300	7620	259.15	6582	422.40	10729	149.92	3808	67.46	1714

It is recommended that if you intend to permanently install the projector, please physically test the projection size and distance using the actual projector in situ before you permanently install it.

FCC

FCC Compliance Statement

This device complies with part 15 of FCC Rules.

Operation is subject to the following two conditions:

1. this device may not cause harmful interference, and
2. this device must accept any interference received, including interference that may cause undesired operation.

Industry Canada ICES-003 Compliance: CAN ICES-003(B) / NMB-003(B)

CE Conformity for European Countries

C € The device complies with the EMC Directive 2014/30/EU, Low Voltage Directive 2014/35/EU, Ecodesign Directive 2009/125/EC. The full Declaration of Conformity can be found at the following website:
https://www.viewsonicglobal.com/public/products__download/safety_compliance/projector/VS20180__CE_DOC.pdf
https://www.viewsonicglobal.com/public/products__download/safety_compliance/projector/VS20184__CE_DOC.pdf

Declaration of RoHS2 Compliance

This product has been designed and manufactured in compliance with Directive 2011/65/EU of the European Parliament and the Council on the restriction of the use of certain hazardous substances in electrical and electronic equipment (RoHS2 Directive) and is deemed to comply with the maximum concentration values issued by the European Technical Adaptation Committee (TAC).

FAQs

- **Q: How do I access the projector's on-screen menu?**
 - **A:** Press the Menu button on the remote control or control panel to access the projector's settings and configuration options.
- **Q: Can I mount the projector on a ceiling?**
 - **A:** Yes, this projector is compatible with ceiling mounts. Please refer to the user manual for detailed instructions on ceiling mounting.
- **Q: What should I do if I encounter connectivity issues with my input sources?**
 - **A:** Check the cables and connections for any loose or damaged components. Try using different input sources to isolate the issue. Resetting the projector may also help resolve connectivity issues.

CONTACT INFORMATION

- www.viewsonic.com.



- ViewSonic Europe Limited
- Haaksbergweg 75
- 1101 BR Amsterdam

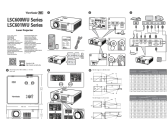
- Netherlands
- +31 (0) 650608655
- EPREL@viewsoniceurope.com.
- <https://www.viewsonic.com/eu/>.
- VS20180/VS20184_QSG_1a_20240606
- Copyright © 2024 ViewSonic Corporation. All rights reserved.
- **Download Link** <http://vsweb.us/q/dn.php>.
- <http://vsweb.us>.

<http://vsweb.us> 🔍



ViewSonic Projector

Documents / Resources



[ViewSonic LSC601WU Series Laser Projector](#) [pdf] User Guide
LSC601WU Series Laser Projector, LSC601WU Series, Laser Projector, Projector

References

- [ViewSonic - Home](#)
- vsweb.us/q/dn.php
- [ViewSonic](#)
- [User Manual](#)

[Manuals+](#), [Privacy Policy](#)

This website is an independent publication and is neither affiliated with nor endorsed by any of the trademark owners. The "Bluetooth®" word mark and logos are registered trademarks owned by Bluetooth SIG, Inc. The "Wi-Fi®" word mark and logos are registered trademarks owned by the Wi-Fi Alliance. Any use of these marks on this website does not imply any affiliation with or endorsement.