



ViewSonic IFP2410 Mini Smart Display Hub User Guide

[Home](#) » [Viewsonic](#) » ViewSonic IFP2410 Mini Smart Display Hub User Guide 

Contents

- [1 ViewSonic IFP2410 Mini Smart Display Hub](#)
- [2 Compliance Information](#)
- [3 Product disposal at end of product life](#)
- [4 Caution](#)
- [5 Getting Started](#)
- [6 Product Overview](#)
- [7 Installation precautions](#)
- [8 Installation and Connection](#)
- [9 Start-up and initial setting](#)
- [10 Power saving mode and Returning to operation](#)
- [11 Basic Operation](#)
- [12 Network Setting](#)
- [13 Restore to Factory](#)
- [14 Use as HDMI Display](#)
- [15 Wall Mounting \(Optional\)](#)
- [16 Troubleshooting and Q&A](#)
- [17 Documents / Resources](#)
- [18 Related Posts](#)



ViewSonic IFP2410 Mini Smart Display Hub



Compliance Information

Please read before proceeding

- Use only the batteries and power adapter provided by the manufacturer. The use of unauthorized accessories may void your warranty.
- Do not store your device in temperatures higher than 50°C (122°F).
- The operating temperature for this device is from 0°C (32°F) to 35°C (95°F).

Connect the power cord from the unit to a grounded AC outlet. Ensure that the power source is within the operating voltage of the display. The operating voltage can be found on the device label. The device uses either 110 to 127 volts alternating voltage or 220 to 240 volts alternating voltage and 50/60 Hz.

CAUTION: To avoid damage to the unit, be sure to use only the power cord that came with the unit.

CE Conformity for European Countries

The device complies with the relevant section of the EMC Directive 2014/30/EU, Low Voltage Directive 2014/35/EC, Eco-Design Directive 2009/125/EC, RoHS Directive 2011/65/EU, WEEE Directive 2012/19/EU, and Radio Equipment Directive 2014/53/EU

<https://www.viewsonic.com/us/ifp2410.html#downloads>

European Union Regulatory Conformance

The equipment complies with the RF Exposure Requirement 2014/53/EU, Council Recommendation of 12 June 2014 on the limitation of exposure of the general public to electromagnetic fields (0-300 GHz). This equipment meets the following conformance standards: EN301489-1, EN301489-17, EN55032/35, EN62368-1, EN300328.

Declaration of RoHS2 Compliance

This product has been designed and manufactured in compliance with Directive 2011/65/EU of the European Parliament and the Council on restriction of the use of certain hazardous substances in electrical and electronic equipment (RoHS2 Directive) and is deemed to comply with the maximum concentration values issued by the European Technical Adaptation Committee (TAC) as shown below:

| Substance | Proposed Maximum Concentration | Actual Concentration |
|---------------------------------------|--------------------------------|----------------------|
| Lead (Pb) | 0.1% | < 0.1% |
| Mercury (Hg) | 0.1% | < 0.1% |
| Cadmium (Cd) | 0.01% | < 0.01% |
| Hexavalent Chromium (Cr6+) | 0.1% | < 0.1% |
| Polybrominated biphenyls (PBB) | 0.1% | < 0.1% |
| Polybrominated diphenyl ethers (PBDE) | 0.1% | < 0.1% |
| Bis(2-ethylhexyl) phthalate (DEHP) | 0.1% | < 0.1% |
| Butyl benzyl phthalate (BBP) | 0.1% | < 0.1% |
| Dibutyl phthalate (DBP) | 0.1% | < 0.1% |
| Diisobutyl phthalate (DIBP) | 0.1% | < 0.1% |

Certain components of products as stated above are exempted under the Annex III of the RoHS2 Directives as noted below: Examples of exempted components are:

1. Lead as an alloying element in aluminium containing up to 0.4% lead by weight.
2. Copper alloy containing up to 4% lead by weight.
3. Lead in high melting temperature type solders (i.e. lead-based alloys containing 85% by weight or more lead).
4. Electrical and electronic components containing lead in a glass or ceramic other than dielectric ceramic in capacitors,
 - e. g. piezoelectronic devices, or in a glass or ceramic matrix compound.

Product disposal at end of product life

ViewSonic respects the environment and is committed to working and living green. Thank you for being part of Smarter, Greener Computing. Please visit ViewSonic website to learn more.

USA & Canada: <http://www.viewsonic.com/company/green/recycle-program/>

Europe: <http://www.viewsoniceurope.com/eu/support/call-desk/>

Taiwan: <http://recycle.epa.gov.tw/>

Copyright Information

Android, Google, Google Play, the Google Play logo and other marks are trademarks of Google Inc.

Caution

IC Caution:

This device complies with Industry Canada licence-exempt RSS standard(s). Operation is subject to the following two conditions:

1. This device may not cause interference, and
2. This device must accept any interference, including interference that may cause undesired operation of the device.

FCC Caution:

This device complies with part 15 of the FCC Rules. Operation is subject to the condition that this device does not cause harmful interference (1) this device may not cause harmful interference, and (2) this device must accept any interference received, including interference that may cause undesired operation.

Any changes or modifications not expressly approved by the party responsible for compliance could void the user's right to operate the equipment.

NOTE: This equipment has been tested and found to comply with the limits for a Class B digital device, pursuant to Part 15 of the FCC Rules. These limits are designed to provide reasonable protection against harmful interference in a residential installation. This equipment generates, uses and can radiate radio frequency energy and, if not installed and used in accordance with the instructions, may cause harmful interference to radio communications. However, there is no guarantee that interference will not occur in a particular installation.

If this equipment does cause harmful interference to radio or television reception, which can be determined by turning the equipment off and on, the user is encouraged to try to correct the interference by one or more of the following measures:

1. Reorient or relocate the receiving antenna.
2. Increase the separation between the equipment and receiver.
3. Connect the equipment into an outlet on a circuit different from that to which the receiver is connected.
4. Consult the dealer or an experienced radio/TV technician for help.

The device has been evaluated to meet general RF exposure requirements. The device can be used in portable exposure conditions without restriction.

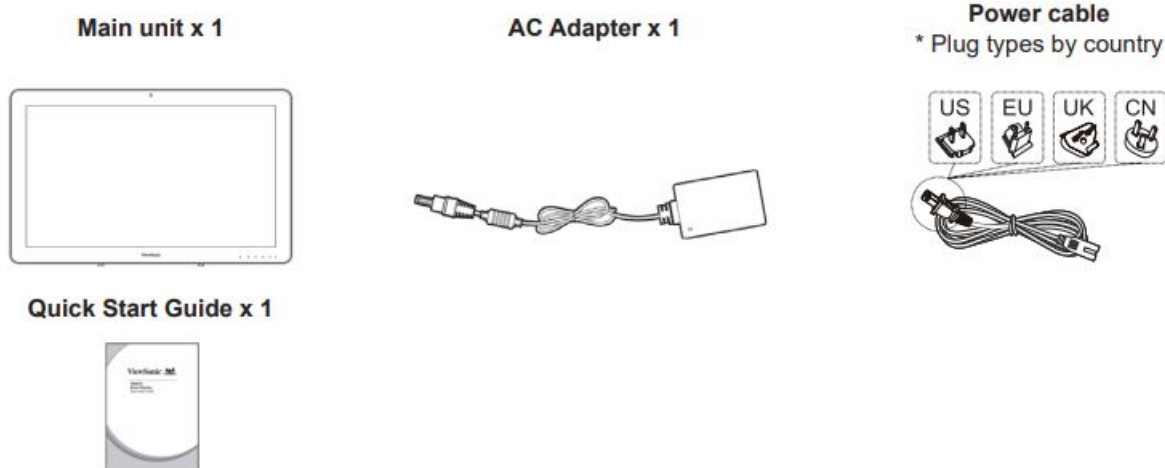
FCC ID: GSS-VS16340

Introduction

Thank you for purchasing this IFP2410. This Start-up Guide describes how to operate and use this product safely. Before operating, please read this guide carefully for important safety information. Please also keep this guide handy as a quick reference should you encounter any difficulties when using this product. You can find the full user guide on the home screen of your device once powered on.

Getting Started

- Before using this product, please ensure that the following items are included:



Items supplied with this product

- Please ensure that the serial number on this product is identical to that on the product warranty.

- If any parts are missing or broken, please contact your store of purchase.

To use this product safely

Even though this product is designed with safety in mind, improper use of this product may cause fire or electric shock that can lead to injuries or death. To prevent such accidents, please comply with the following recommendations:

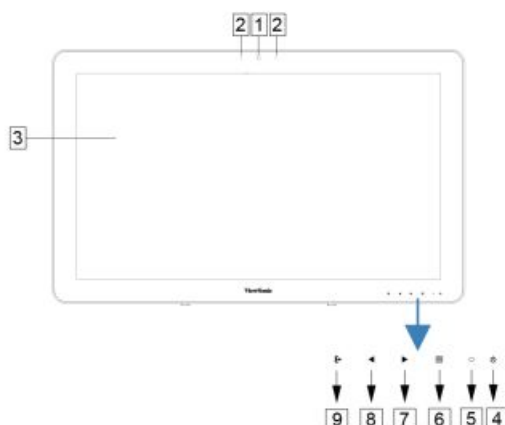
- Observe safety precautions Please read and follow all safety precautions as indicated.
- Stop using the product if it malfunctions In the event of a malfunction, please contact ViewSonic Customer Care for support.
- If the following events occur, then follow the recommendations
 1. Smoke is detected
 2. Strange sound or odor is observed
 3. If water gets inside this product
 4. This product is dropped or damaged
 5. Turn off the power
 6. Unplug the AC adapter cable and USB cable
 7. Please contact ViewSonic Customer Care for service support.

Safety warning indications



Product Overview

Basic Operations and Front View



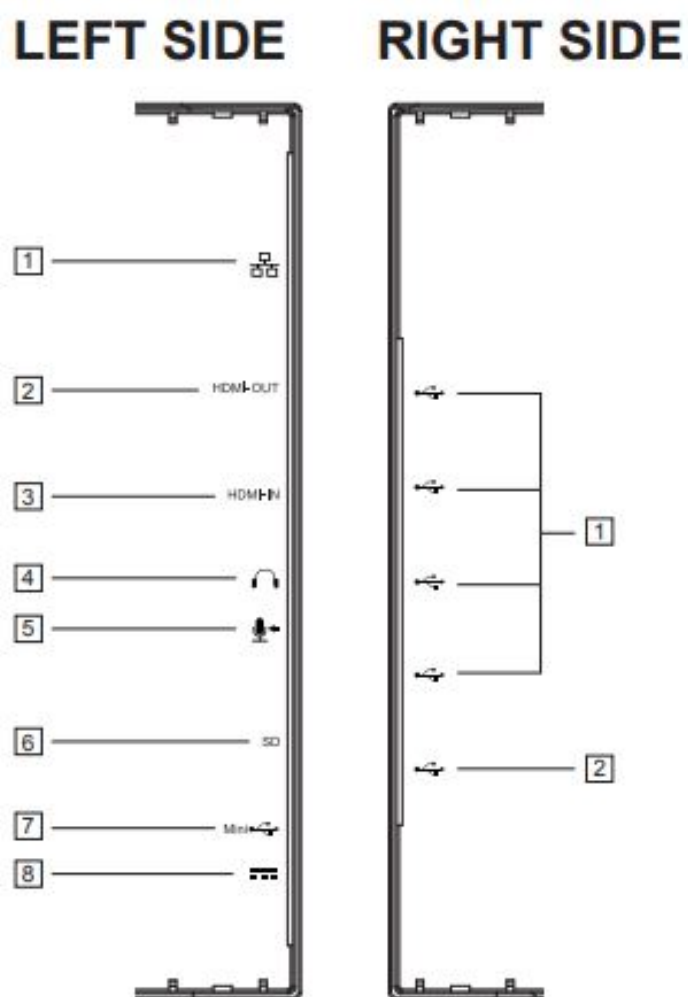
1. Built-in Webcam (5.0MP)
2. Built-in Microphone
3. Display with touch panel function

About LCD display:

This product uses a TFT LCD display. Note that some pixels may always appear off (black) while some are always on (orange, green, or blue). Depending on the viewing angle, uneven color or uneven brightness may be observed. Please note that these are natural characteristics of TFT LCD and should not be regarded as defects.

4. Power button
5. LED indicator
6. OSD Menu / Exit
7. Arrow Button (Up/Right)
8. Arrow Button (Down/Left)
9. Input Signal Switch / OSD Menu Select

Back View



LEFT SIDE

1. LAN port (RJ-45)
2. HDMI-OUT jack
3. HDMI-IN jack
4. Headset jack
5. Microphone IN

6. SD Card Slot
7. MiniUSB port (OTG)
8. DC-in jack

RIGHT SIDE

1. USB Type-A x 4
2. USB Type-B

Attention

Please do not use AC adapters other than the one supplied in this product package to prevent fire and electric shock.

Please do not place objects on the AC adapter, or cover it with anything. Overheating of the AC adapter may lead to a fire.

Installation precautions

Installation Environment

Health precautions

Viewing computer monitor displays for extended periods of time may result in tiredness, numbness in the hands and feet, blurry vision, etc. Please see the picture below as a guide for extended use conditions.

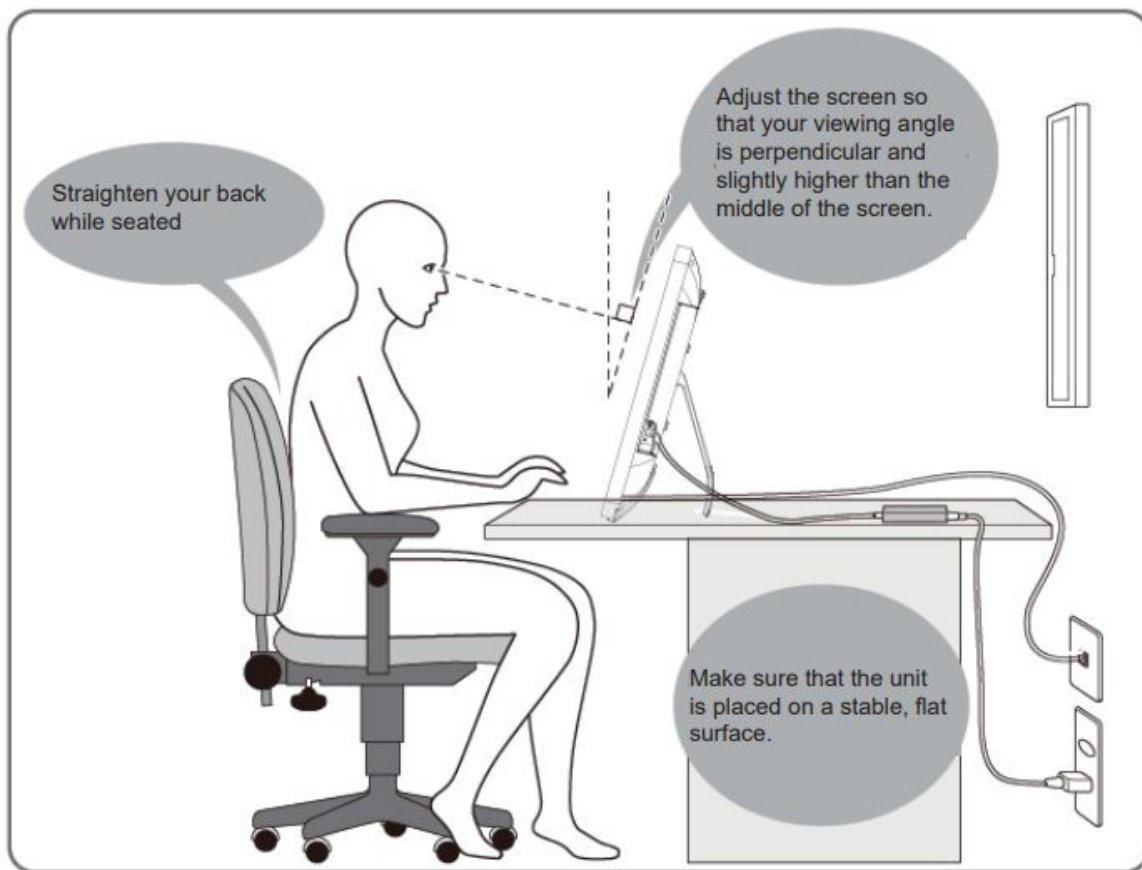
Safety precautions

- Install this product in a well-ventilated location to eliminate exposure to high humidity conditions that may lead to condensation on or in the product.
- For proper heat dissipation, allow a gap of at least 6" (15cm) between this product and the wall during installation.

Regarding lightning hazards

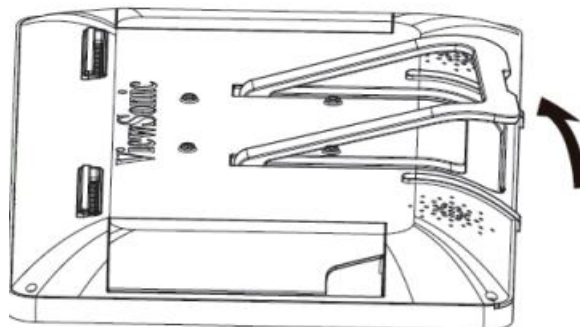
Where lightning strikes are expected, it is advised to turn off the computer and unplug any cable or cord connected to this product

Ideal installation and proper posture

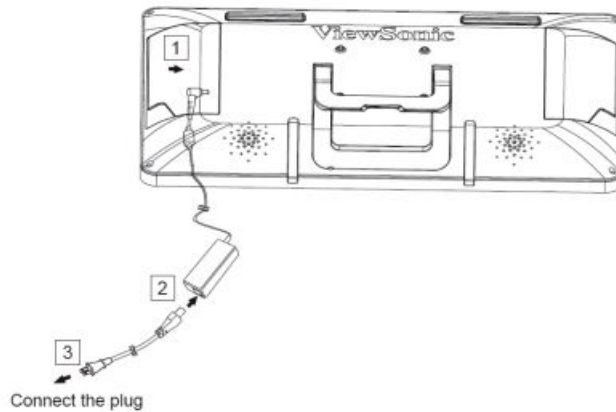


Installation and Connection

1. Open the stand in the direction of the arrow. Place face down on a clean, flat surface and avoid any objects that could damage the display.



2. Connect the power
 1. Connect one end of the supplied AC adapter to the DC-in jack at the back of the unit.
 2. Connect the power cord to the other end of the AC adapter.
 3. Connect the power plug to the outlet.



3. Place the unit upright on a stable, flat surface.

Start-up and initial setting

Turn on the Power



1. Make sure the power cable and AC adapter are connected.
2. Press and hold the power switch until the status LED turns blue.

Shut Down

1. Press and hold the power button until you see “Power off” appears on the screen.
2. When the screen appears as shown on the left, tap “OK” to shut down the power.

If the power button is pressed quickly, the screen shuts off and goes into power saving mode. When the power button is held down about 8 seconds, the product is forced to shut down.

Power saving mode and Returning to operation

Entering Power Saving Mode

While product is in operation, briefly press the power button to put the unit into power-saving mode.

Returning from Power Saving Mode

While the power LED is orange, briefly press the power button to return from power-saving mode

Basic Operation

Home Screen

After powering on the IFP2410, the main display window is shown below.



The launcher page contains a main page with default apps which include the most commonly use **apps**.

myViewBoard: Annotation app

vCastReceiver: Wireless presentation and collaboration app

Chromium: Browser to access the Internet

Network Setting

Connecting to Wireless LAN

1. Tap “All applications” – “Settings”.
2. Turn “Wi-Fi” to ON by dragging “OFF” to the right.



3. When Wi-Fi is turned on, a list of all available wireless LAN access points will be shown on the right side of the screen. Tap the desired Wireless LAN access point for the connection.
4. If a password is required, enter it and tap “Connect” to connect to the wireless LAN.

Connecting with RJ45

Simply plug in your Ethernet cable to the RJ45 port to connect to a LAN. No set-up or configuration is required.

Restore to Factory

Resetting Your Smart Display

Restore to factory will delete all of your data created and installed apps after purchase (including system and application settings, downloaded applications, etc.)

1. Tap “All applications” – “Settings”.
2. Tap “Back up & reset”.
3. Tap “Factory data reset”.
4. Confirm all onscreen instructions and tap “reset”.
5. Again, confirm all onscreen instructions and tap “Delete All”.

Restoring will begin shortly. System will reboot several times during restore.

Use as HDMI Display

Depending on the mode selected, this product may be used as an HDMI display.

Android Mode

Can be used as an Android device.

HDMI Mode

Connect to HDMI source to use as a Monitor device.

Switching to HDMI Mode

1. Connect this display and an HDMI source with the HDMI cable. Optional accessories may not be included with this product package in some regions.
2. Tap the SELECT icon to switch to HDMI mode.

Switching to Android Mode

- 1) Tap the SELECT icon to switch to Android mode.

Wall Mounting (Optional)

NOTE: For use only with UL Listed Wall Mount Bracket.

To obtain a wall-mounting kit or height adjustment base, contact ViewSonic® or your local dealer. Refer to the instructions that come with the base mounting kit. To convert your display from a desk-mounted to a wall-mounted display, do the following:

1. Find VESA compatible wall-mounting kit which meets the quaternions below

| Max Loading | Hole pattern (W x H; mm) | Interface Pad (W x H x D) | Pad Hole | Screw Q'ty & Specification |
|-------------|-----------------------------|--------------------------------|----------|-------------------------------|
| 14kg | 100mm x 100mm | 115 mm x 115 mm x 2.6 mm | Ø 5mm | 4 piece M4 x 10mm |

- Verify that the power button is turned Off, then disconnect the power cord.
- Lay the display face down on a towel or blanket.
- Remove the base. (Screws removal might be required.)
- Attach the mounting bracket from the wall mounting kit using screws of the appropriate length.
- Attach the display to the wall, following the instructions in the wall-mounting kit.

Troubleshooting and Q&A

Q. Power does not turn on.

- A. ● Check if the AC adapter and power cord are properly connected.
- Reconnect the AC adapter and power cord, and turn the power on.
 - Press and hold the power button for 8 seconds, and turn the power on again.

- Q. I would like to receive support from application markets like Aptoide store for my downloaded applications.**
A. We do not provide any support. Please contact the developers of your downloaded applications for assistance.
- Q. “Compatible Zoom” is shown when an application is started.**
A. “Compatible Zoom” is a feature that can enlarge the size of a fixed size application. Use Compatible Zoom to view your applications in enlarged sizes.
- Q. The device is frozen.**
A. “Power Off” – Press and hold the power button 6~8 seconds to force Power Off in the event of a look-up caused by software error that prevents normal power off or restart.

Documents / Resources

| | |
|---|--|
|  | <p>ViewSonic IFP2410 Mini Smart Display Hub [pdf] User Guide IFP2410, Mini Smart Display Hub</p> |
|---|--|