



Viessmann 5560 Sound Module with Without Synchronous Control User Manual

[Home](#) » [VIESSMANN](#) » Viessmann 5560 Sound Module with Without Synchronous Control User Manual 



Viessmann
Sound module
with/without synchronous control



Operation Manual

Contents

- [1 Important information](#)
- [2 Introduction](#)
- [3 Mounting](#)
- [4 Connection](#)
- [5 Operation](#)
- [6 Notes](#)
- [7 Trouble-shooting](#)
- [8 Technical Data](#)
- [9 Documents / Resources](#)
- [10 Related Posts](#)

Important information

Please read this manual completely and attentively before using the product for the first time. Keep this manual. It is part of the product.

1.1 Safety instructions



Caution:

Risk of injury!

Due to the detailed reproduction of the original and the intended use, this product can have peaks, edges and breakable parts.

For installation tools are required.

Electrical hazard!

Never put the connecting cables into a power socket! Regularly examine the transformer for damage. In case of any damage, do not use the transformer!

Make sure that the power supply is switched off when you mount the device and connect the cables!

Only use VDE/EN tested special model train transformers for the power supply!

The power sources must be protected to prevent the risk of burning cables.

1.2 Using the product for its correct purpose

This product is intended:

- For installation in model railroad layouts and dioramas.
- For connection to an authorized model railroad transformer (e. g. item-No. 5200).
- For operation in dry rooms only.

Using the product for any other purpose is not approved and is considered incorrect. The manufacturer is not responsible for any damage resulting from the improper use of this product.

1.3 Checking the package contents

Check the contents of the package for completeness:

- Sound module
- Mounting material (2 screws, 6 plugs)
- Manual

Introduction

Enjoy the small worlds with all your senses. Model train layouts and dioramas become even more realistic and alive by the appropriate background sound.

Viessmann sound modules are available with sounds fitting for different subjects. They are very compact, immediately operational and easy to install due to the integrated loudspeaker. Of course, the volume can be adjusted. The sounds of the modules are an integral part and can not be exchanged.

2.1 Synchronized control

Various modules are equipped with a control input respectively control output so that they can generate motion synchronized sounds suitable for the respective models of the eMotion series.

In the standard operation mode without synchronized control the module will play the respective background noise in a loop. If the module receives a synchronizing impulse emitted from an appropriate eMotion-article it plays the background noise according to the movements of this functional model.

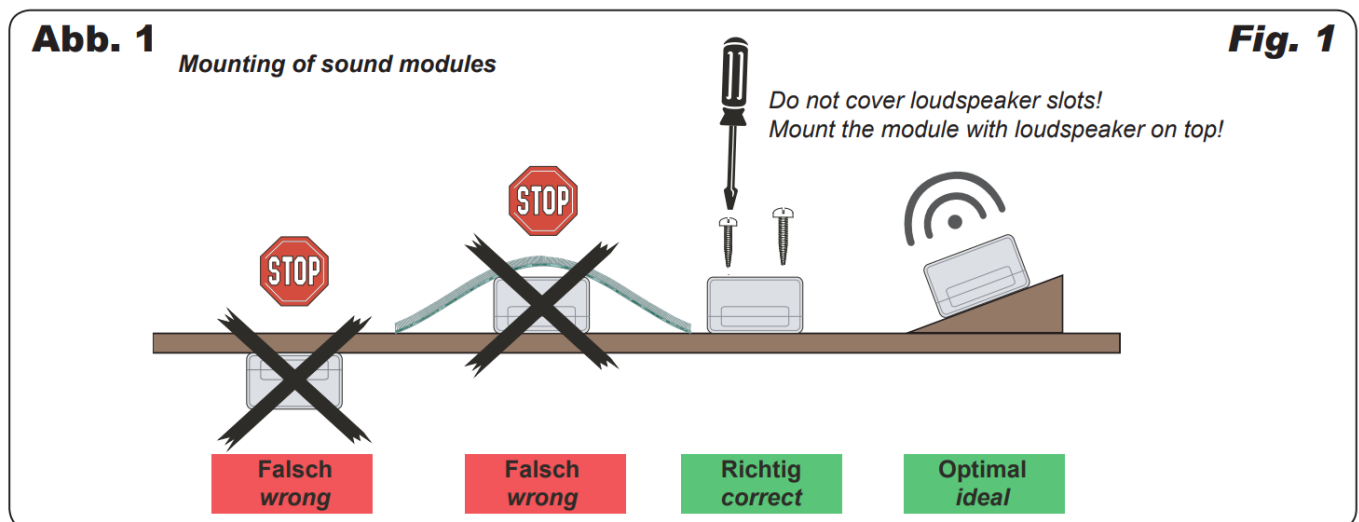
In case of some special models, e. g. helicopter, the sound module itself controls the functional model.

Therefore the specific sound module is equipped with an additional synchronized output which enables synchronization of sounds and movements (e. g. starting of the motor, beginning of the rotor, rotating movement, ...).

You can find information concerning the connection in chapter 4.

Mounting

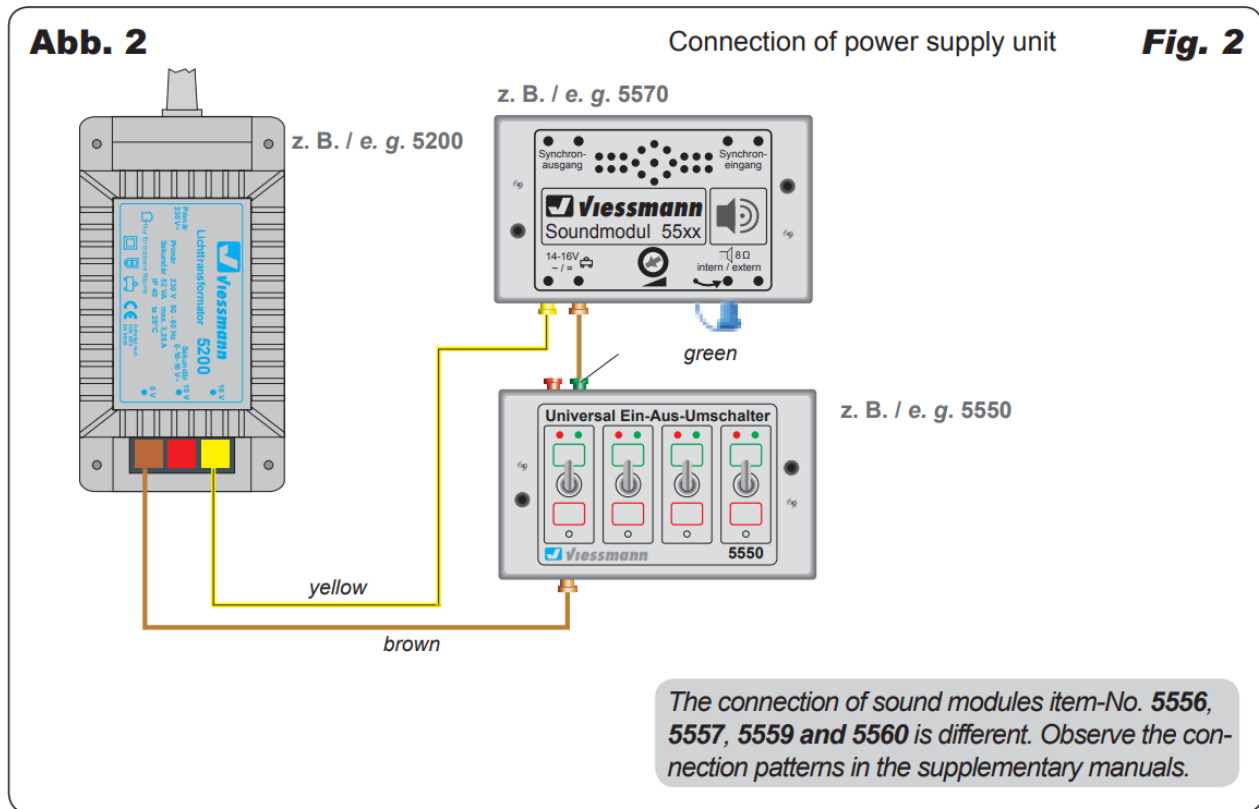
Fix the module with the enclosed screws. To ensure an optimal sound reproduction of the module, please note the following tips:



1. The loudspeaker is an integrated part of the module. The upper surface of the module must always be uncovered in order to enable a good sound dispersion.
2. The sound module must always be adjusted to the direction of the spectator, so please no upside down mounting under the layout.
3. The sound module should be installed near to the respective functional model on your layout. You can install the module on the layout itself, e. g. in a building. This way you can even have a better sound and an optimal concordance between the visible and the audible sound source.

Connection

Fitting cables: Due to the low current consumption thin cables can be used which can easily be hidden. It is recommended to use a cross section of 0,14 mm² (e. g. Viessmann item-No. 6860 – 6869 or 68603 – 68693). The sound module has no on-off-switch. In case you want to switch off or disconnect the sound module from power supply, you can add a switch in one of the two power supply wires (brown or yellow), see fig. 2. Note the safety instructions mentioned above. Connect the sound module to the power supply according to fig. 2.



4.1 Connection of the synchronized input

(only sound modules item-No. 5570, 5572, 5574)

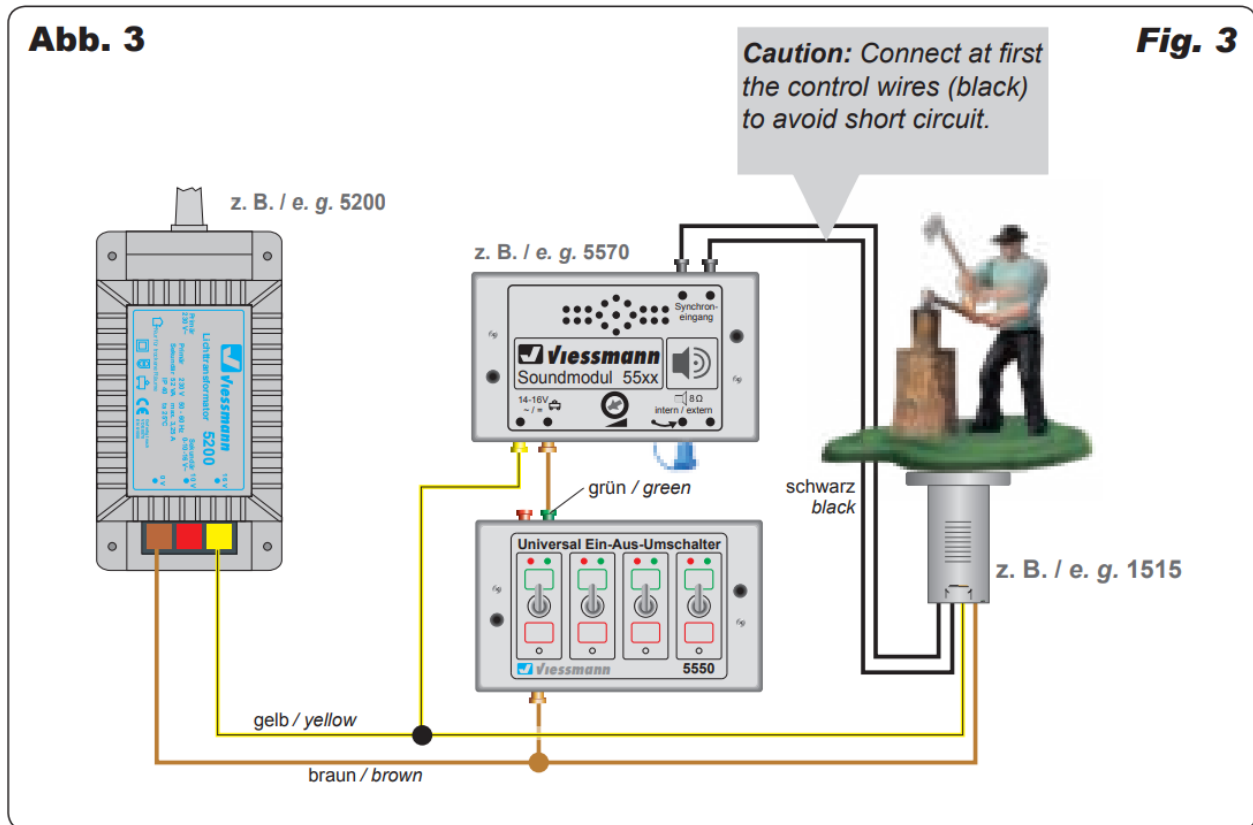
This chapter describes how to connect an appropriate eMotion-item equipped with a control output for motion synchronized sounds to sound modules with appropriate input.



Tip:

You get the most efficient effect if you place the noise-releasing eMotion-item to the sound module as near as possible.

- Switch off the power supply of the eMotion-item and the sound module.
- Connect the two black control wires of the eMotionitem to the two synchronized input connection jacks of the sound module (see fig. 3).

Abb. 3**Fig. 3**

4.2 Connection of the synchronized output (only sound modules item-No. 5556, 5557, 5573)

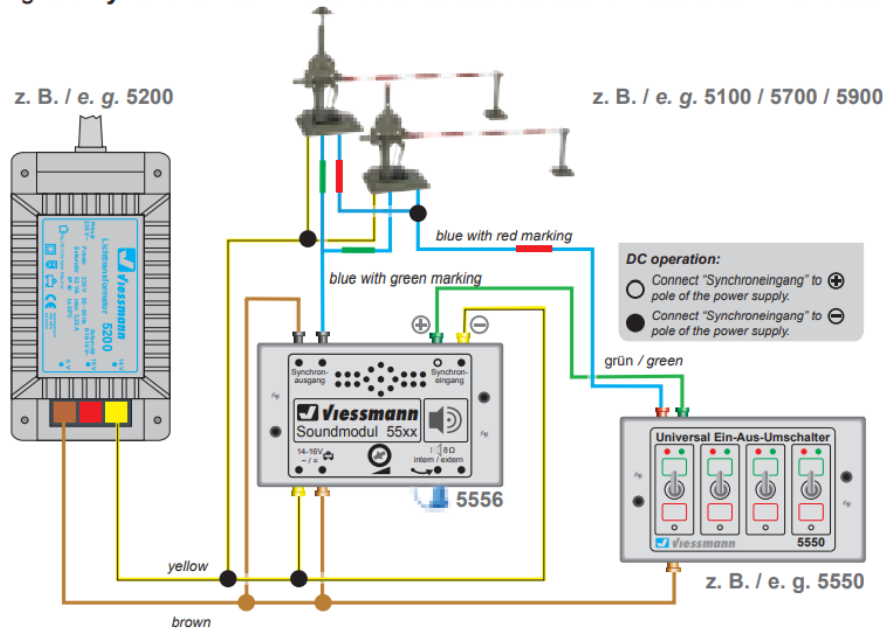
In case of these sound modules, the sound module itself controls the functional model. Therefore it is necessary to consider the corresponding figures:

Sound module item-No. 5556 to item-No. 5100, 5700 or 5900 (fig. 4), sound module item-No. 5557 to item-No. 5164 (fig. 5), sound module item-No. 5556 to item-No. 5104 or 5107 (fig. 6) and sound module item-No. 5573 to item-No. 5119 (fig. 7).

Item-No. 5556/5557: You need a switch to switch on/off the model as well as the sound module. The switch is connected to the connection jacks "synchronous input". Viessmann recommends the universal on-off switch item-No. 5550.

Abb. 4**Fig. 4**

The wiring is **only** valid for item-No. 5100/5700/5900 to sound module item-No. 5556

**Abb. 5****Fig. 5**

The wiring is **only** valid for item-No. 5164 "Helicopter" to sound module item-No. 5557

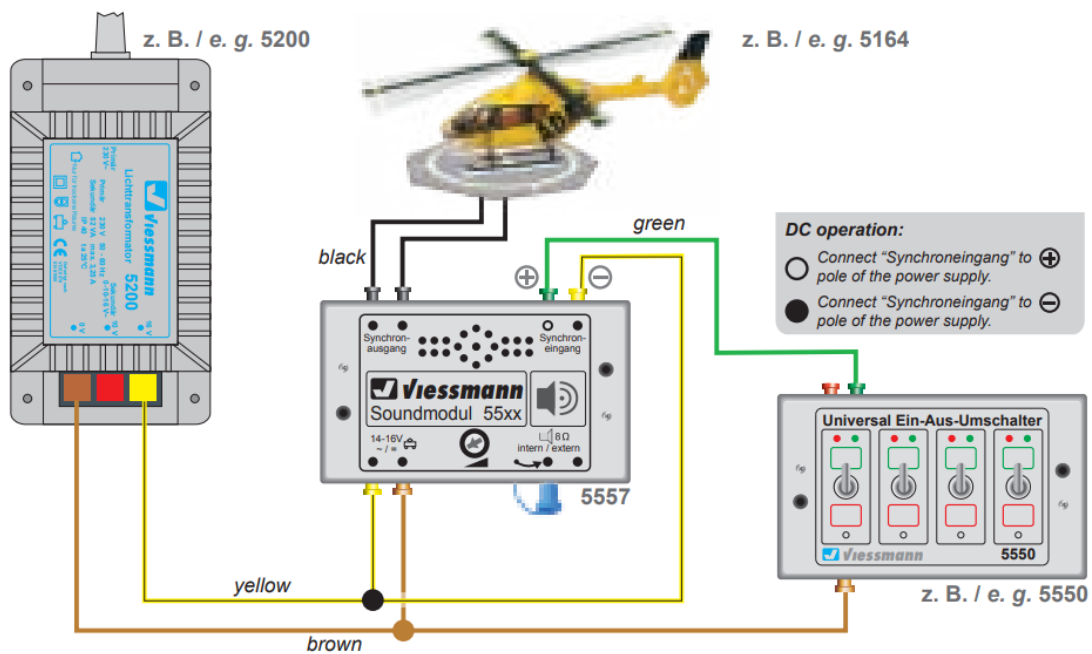


Abb. 6

The wiring is only valid for item-No. 5104/5107 to sound module item-No. 5556

Fig. 6

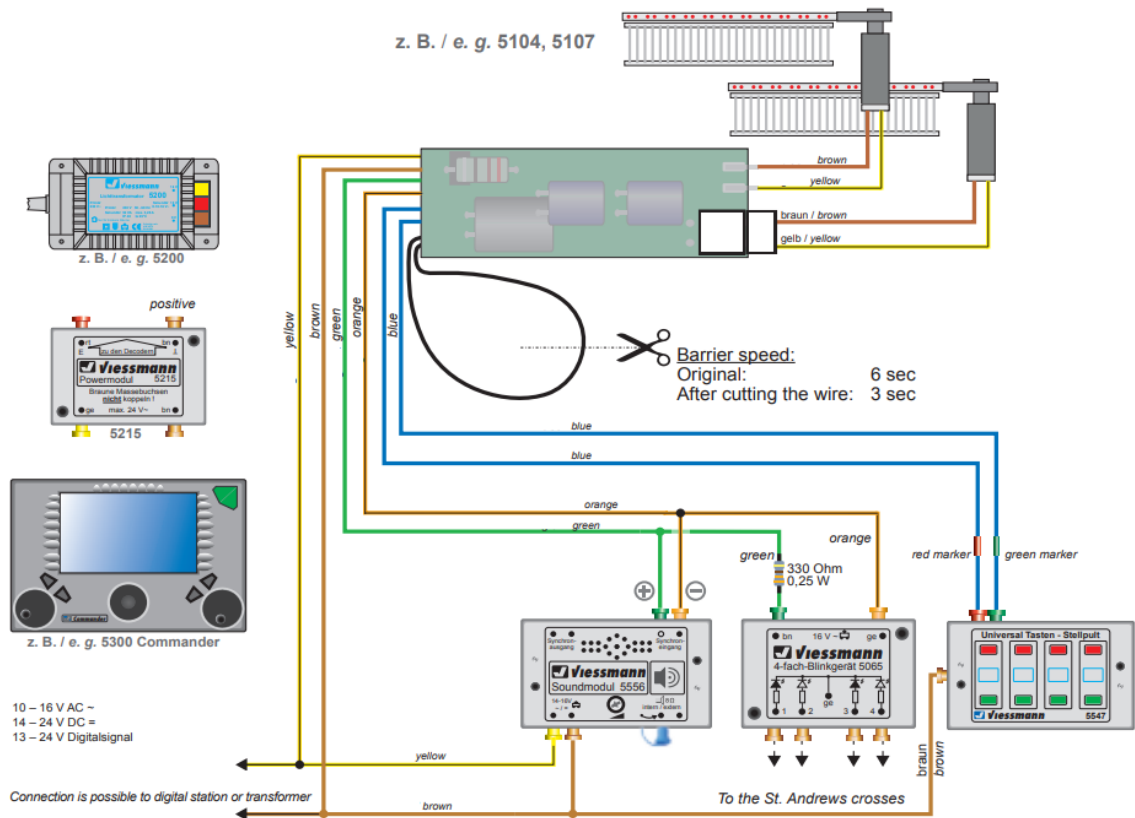
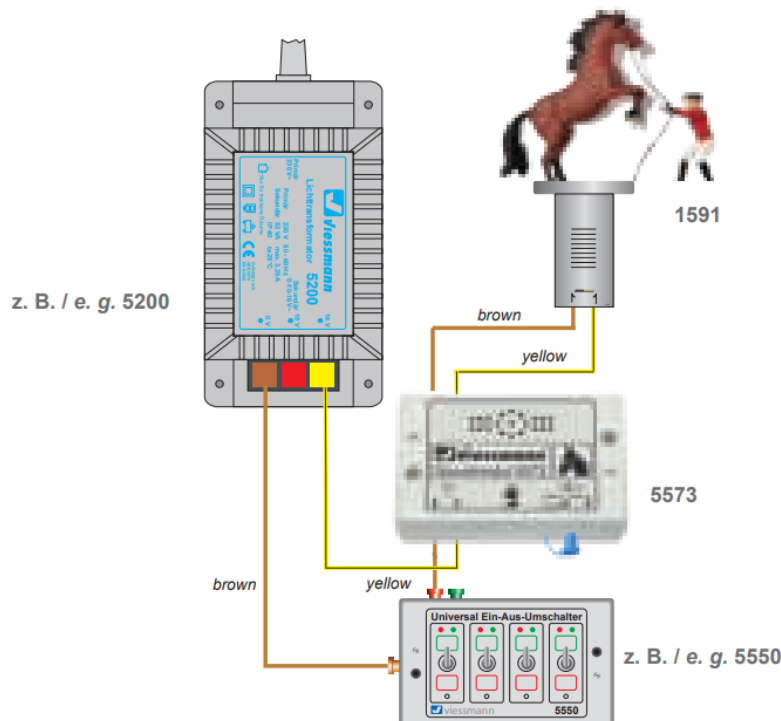


Abb. 7

Fig. 7

The wiring is **only** valid for item-No. 1591 "Rearing up horse" to soundmodule item-No. 5573

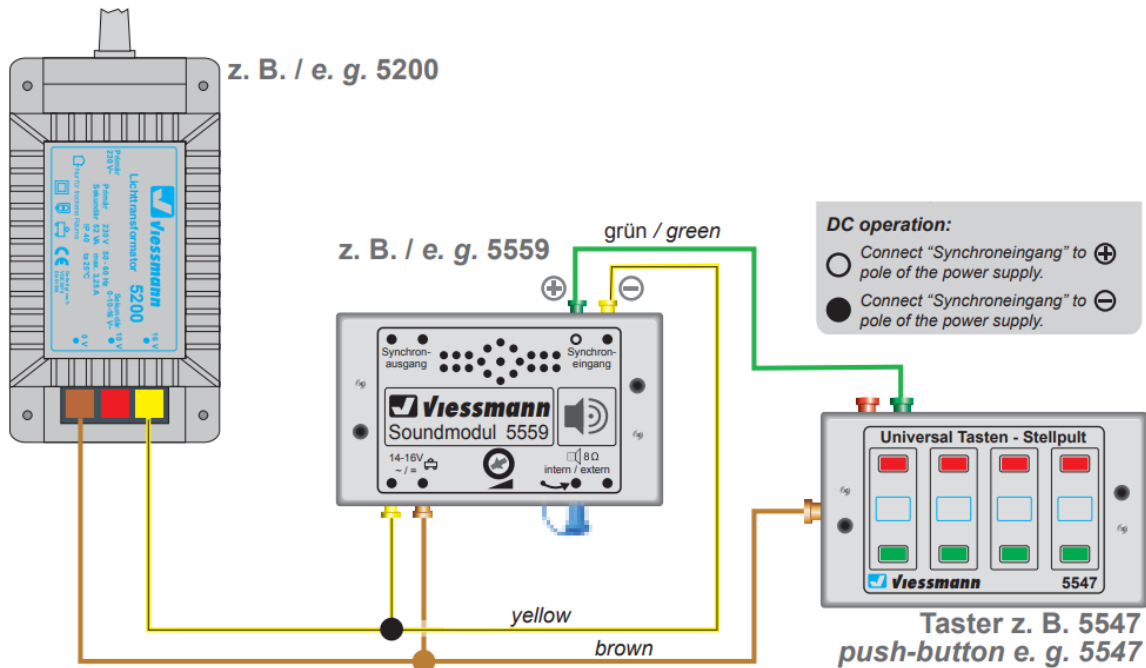


4.3 Connection of sound modules without synchrional functionality

Sound modules item-No. 5559 and 5560 are without synchrional function (fig.8).
The synchronous input is used to switch the sound on or off.

Abb. 8

Connection of sound modules **without** synchronal function:

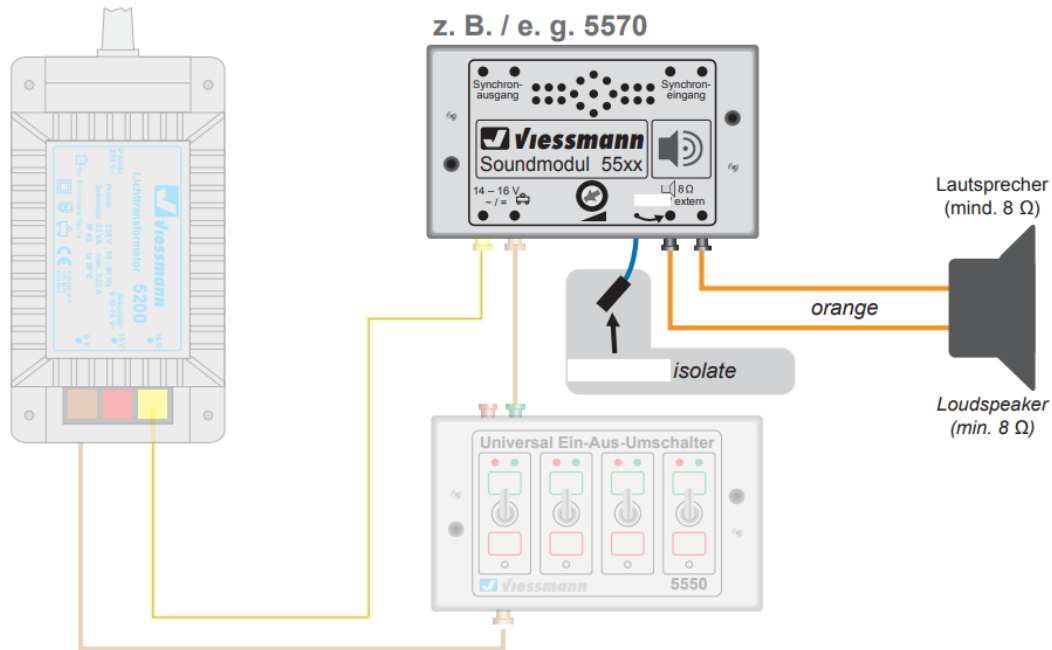
Fig. 8

4.4 Connection of an external loudspeaker

The sound module is equipped with an output for an external loudspeaker with electrical values of 8 ohm impedance at least and 1/2 watt power (can be purchased in an electronics specialised trade). In case you connect an external loudspeaker the incorporated loudspeaker will be switched off.

1. Please pull the short blue cable from the sound module out of the jack right beside it.
2. Isolate the blue cable, to avoid any contact with other cables.
3. Mount the external loudspeaker at the intended place.
4. Install the two wires of the external loudspeaker to the sound module.
5. Connect the two wires to the two jacks according to fig. 9.

You can use plugs and sockets for the connection, e. g. Viessmann item-No. 6875 (plug orange) and item-No. 6884 (socket orange).

Abb. 9**Fig. 9****Connection of an external loudspeaker****Operation**

If the power supply is switched on, the sound module will play its integrated sound effects continuously either in a loop or synchronous to the movements (except item-No. 5556, 5557, 5559 and 5560).

Sound modules equipped with a synchronized output control the functional model. Switch them either on or off with the on-off switch. Sound modules equipped with a synchronized input are controlled by the models.

A switch is not necessary in this case (see also chapter 4.1).

Item-No. 5556 – 5557 – 5559 – 5560

To play a sound, one impulse to the synchronous input is needed. Once an impulse is set, the sequence of barrier ringing with item-No. 5556 runs for approx. 5 seconds, independent of the duration of the impulse.

With item-No. 5557 the acoustic start sequence of the helicopter sounds first, then the sound of the rotor follows. After open up the switch the running down sequence completes.

With item-No. 5559 and 5560 the sound starts and plays continuously as long as the signal is applied to the synchronous input. The sound stops only when the signal is interrupted.

Volume adjustment

The sound module is equipped with a volume control for the sound. The adjustment is valid as well for the integral loud speaker as for an external loud speaker.

To adjust the volume, use a slotted screwdriver and proceed as follows (see fig. 10):

- **Increase volume:**

Turn the poti to the right.

- **Reduce volume:**

Turn the poti to the left.

Abb. 10**Fig. 10**

Use a small screwdriver!



Notes

Trouble-shooting

Every Viessmann product is produced with high quality standard and controlled before delivery. If there should occur any trouble nevertheless, please check first the power supply and the wiring. If the product is damaged, put it in the original packaging and bring it to your specialist dealer or send it directly to the Viessmann-service (address see below).

Examples for errors:

- No sound from the module.
- No sound from the external loudspeaker.

Trouble-shooting:

- Turn the poti to the right.
- Please make sure that the small blue plug at the housing of the sound module is removed from the jack and isolated

Connect the external loudspeaker as is shown in fig. 9 on page 9.

- There are sound modules, e. g. item-No. 5570 and 5557 (see fig. 3 and 5) which play only a sound, if they receive a signal from the control wires of the eMotion item.

Guarantee the connection.

Technical Data

Dimensions:	88 x 53 x 22 mm
Weight:	approx. 50 g
Operation voltage:	14 – 16 V AC / DC
Operation current:	approx. 150 mA
Insulation:	IP20
Temperature/humidity (operation):	0 – 40° C
Temperature/humidity (storage):	-10 – 60° C

The latest version of the manual can be looked up at the Viessmann homepage entering the item-No.

Model building item, not a toy! Not suitable for children under the age of 14 years! Keep these instructions!



Viessmann
Modellspielwaren GmbH
 Am Bahnhof 1
 D – 35116 Hatzfeld-Reddighausen
www.viessmann-modell.de



86143
 Stand 05/sw
 03/2016
 Ch/Me

Documents / Resources

	<p>Viessmann 5560 Sound Module with Without Synchronous Control [pdf] User Manual 5560 Sound Module with Without Synchronous Control, 5560, Sound Module with Without Synchronous Control, Without Synchronous Control, Synchronous Control</p>
--	--