



VIDEX VLE-F2e LED Floodlight with Motion Detector User Manual

[Home](#) » [VIDEX](#) » VIDEX VLE-F2e LED Floodlight with Motion Detector User Manual 

Contents

- [1 VIDEX VLE-F2e LED Floodlight with Motion Detector](#)
- [2 FEATURE](#)
- [3 LED FLOODLIGHT WITH MOTION DETECTOR](#)
- [4 MAINTENANCE& SAFETY INSTRUCTIONS](#)
- [5 Documents / Resources](#)
- [6 Related Posts](#)

VIDEX®

VIDEX VLE-F2e LED Floodlight with Motion Detector



FEATURE

1

220-240V
~50Hz

2

	P _{on}	P _{on}
VLE-F2e-105W-S	10W	VLE-F2e-305W-S 30W
VLE-F2e-205W-S	20W	VLE-F2e-505W-S 50W

3

INDEX

VLE-F2e-105W-S	900Lm	<div>3.2</div>
VLE-F2e-205W-S	1800Lm	
VLE-F2e-305W-S	2700Lm	
VLE-F2e-505W-S	4500Lm	

4

<6x
ellipse
MacAdam

CCT 4000K

5

Not Dimmable

6

Ra ≥ 80

7

90°

8

30 000 h

9

IP65

10

ON/OFF
20 000

11

IK 07

12

Free

13

Free

14

ERP
2.0

Compliant

15

t°C -20
~
+50

16

17

0,5 m

18

19

20

21

22

23

24

LED FLOODLIGHT WITH MOTION DETECTOR

1. Rated voltage, frequency.
2. Rated power.
3. Rated luminous flux.
4. 1. Nominal useful luminous flux (360°),
5. 2. Energy efficiency class.
6. Color temperature.
7. Not compatible with lighting dimmer.
8. Color Rendering Index.
9. Nominal beam angle.
10. Nominal lifetime.
11. Protection against dust and water jets provided.
12. ON/OFF cycles.
13. Protection against mechanical impacts.
14. Ultraviolet-free.
15. Mercury-free.
16. Compliance with standards of ecodesign and energy labeling in force from Sep 01, 2021
17. Working temperature
18. Product meets requirements of EU directives.
19. The minimum distance from the illuminated object.
20. Class I. A product in which protection against electric shock is provided not only by means of basic insulation but also through additional safety measures, i.e. extra protective circuit to which protective conductor of the fixed feeding installation needs to be connected.
21. Product can be installed and operated in/on a surface made of materials which are normally flammable.
22. For outdoor use only.
23. Replace the defective lamp cover immediately. Don't use the product if the outer bulb is cracked or broken.
24. LED light source cannot be replaced.
25. Danger of electric shock.

ENVIRONMENTAL PROTECTION

24. Pursuant to the provisions of the WEEE Act, it is forbidden to put waste equipment marked with the symbol of a crossed bin together with other waste. The user, wishing to get rid of electronic and electrical equipment, is obliged to return it to a waste equipment collection point. There are no hazardous components in the equipment that have a particularly negative impact on the environment and human health.

PRODUCT'S PURPOSE AND APPLICATION

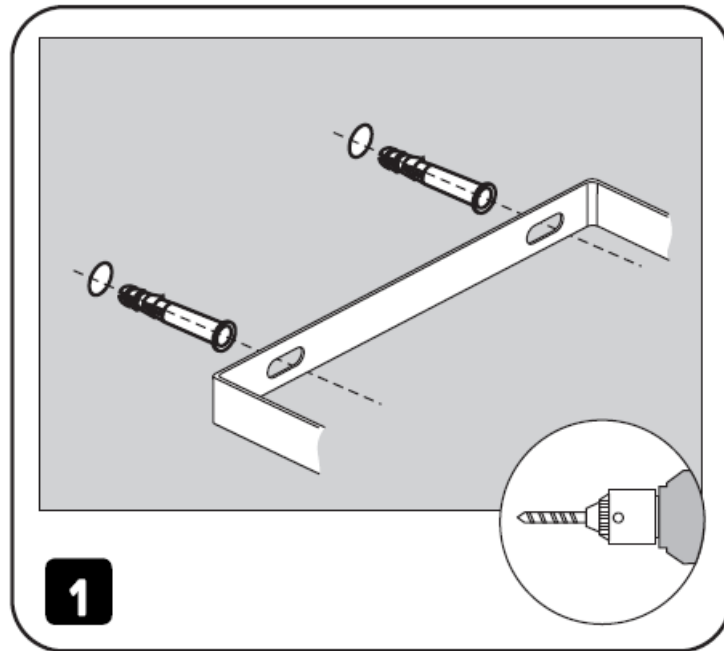
This product is intended for illumination of the public or industrial space. also of the warehouses and building structures.


INSTALLATION INSTRUCTIONS

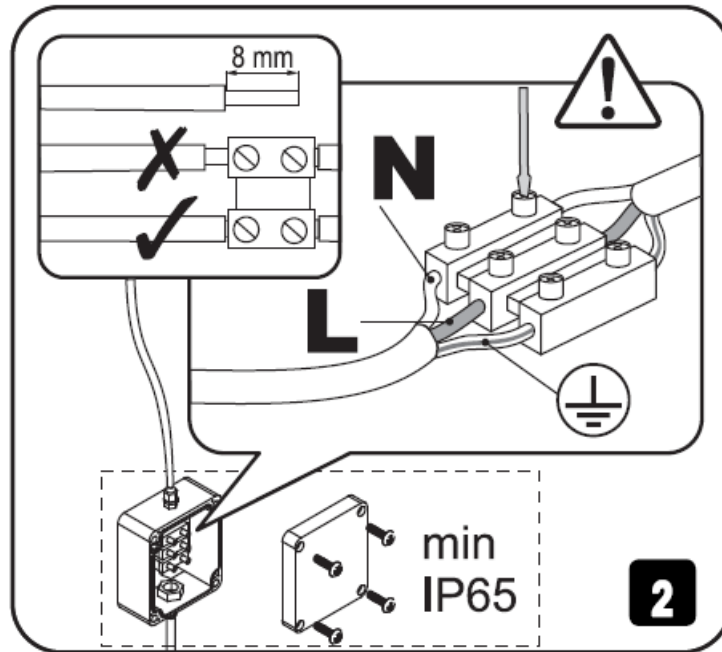
Installation must be performed by an electrician or authorized person. Read the user's manual prior installation. Any assembly or maintenance

activities to be done with power supply OFF. To install the LED floodlight on the surface:

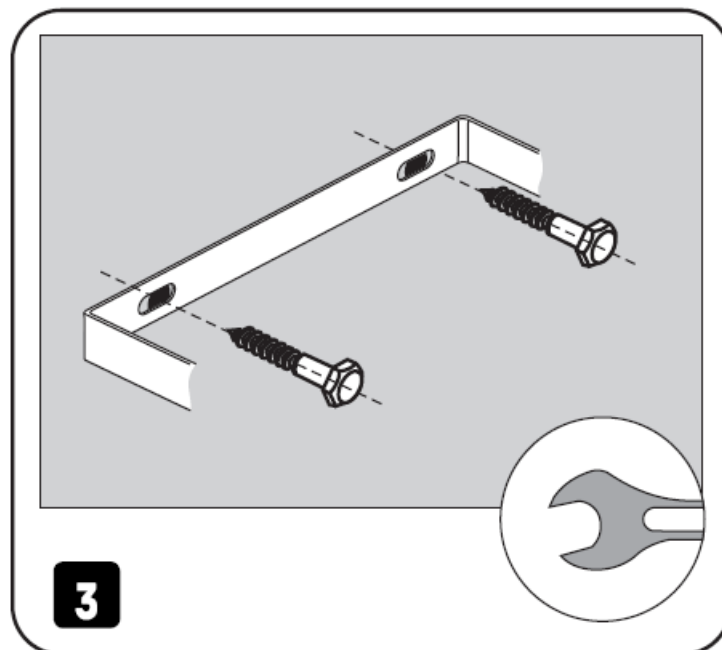
1. Drill 2 holes in the surface and fix the dowels in the holes (not included) Fig.1);



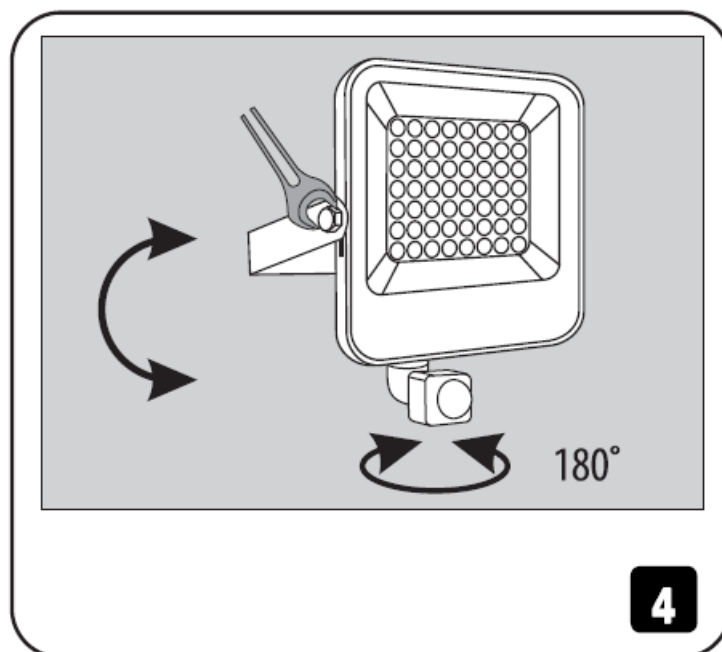
2. Connect the L N  wires to the – 230V, 50/ 60Hz mains using an outdoor junction box and screw terminal (Fig.2). The ends of the wires must be insulated to the appropriate length;



3. Fix LED floodlight with screws (Fig.3);

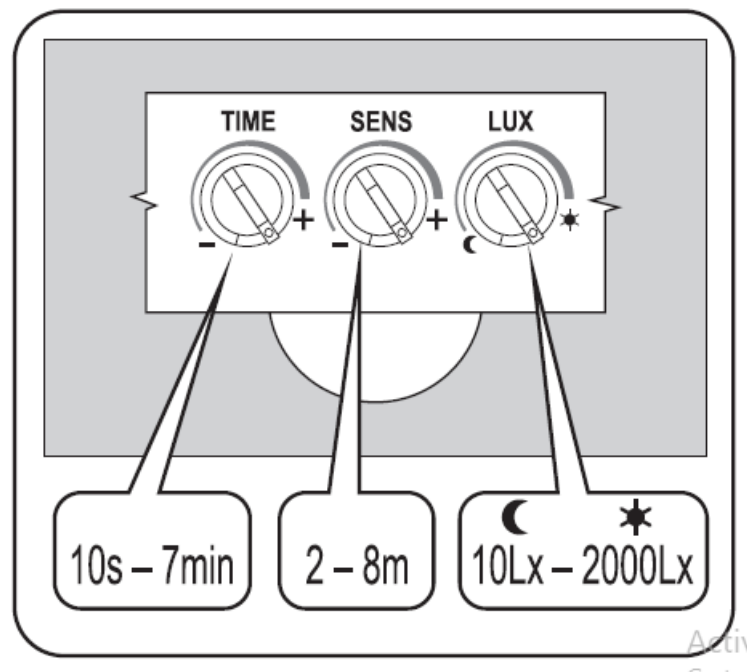
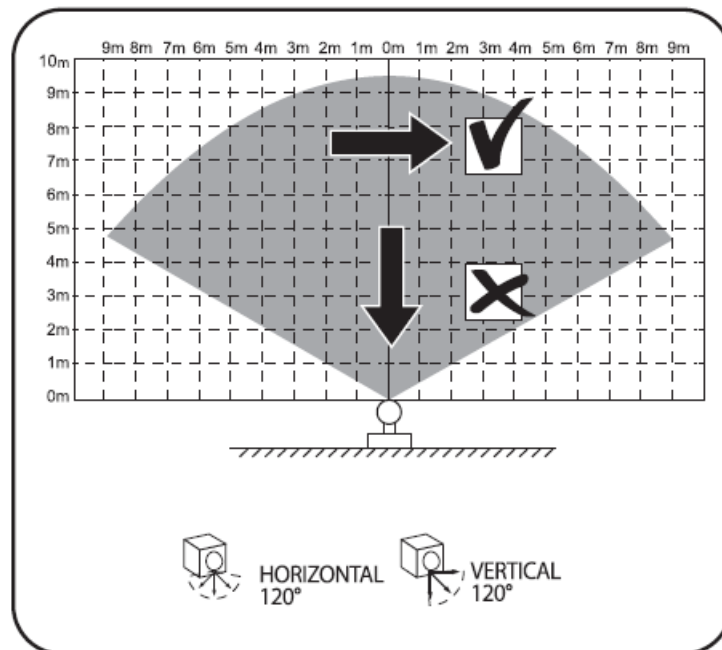


4. Adjust the tilt angle and tighten the bolts on the bracket (Fig. 4). Before the first use it is necessary to verify that mechanical installation and electric connection are carried out correctly.



INSTALLATION OF THE MOTION SENSOR

1. To test the motion sensor turn the detection distance control (SENS) to the maximum position (clockwise; turn the light level control (LUX) to the maximum position (clockwise; turn the delay time control (TIME) to the minimum position counterclockwise).
2. Turn on the floodlight.
3. Adjust the delay time, detection distance and light level with the controls.



FUNCTIONAL CHARACTERISTICS

- This product should be used outdoor only


MAINTENANCE& SAFETY INSTRUCTIONS

Any maintenance work must be performed when the power supply is cut OFF and the product has cooled down.

Clean only with soft and dry cloths. Do not use chemical detergents. Do not cover the product. Ensure free air access. LED floodlight may heat up to a high temperature. Product can only be supplied by rated voltage or voltage within the range provided. It's forbidden to use the product with the damaged electric wiring or places of connections. ATTENTION! Do not look directly at LED light beam. It's forbidden to use the product with damaged cover. Product must not be used in unfavorable conditions, eg. vibrations, explosive air atmosphere fumes, or chemical fumes, etc. Product with non-replaceable light Source of LED type. Product cannot be fixed if the light source becomes damaged. Used or damaged product should be disposed of in accordance with applicable regulations. Failure to follow these instructions may result in e.g. fire, burns, electrical shock, physical injury and

other material and non-material damage. Allegro Opt Sp. z 0. 0. shall not be responsible for any damage resulting from the failure to follow these instructions. The manufacturer reserves the right to make changes in the manual.

Documents / Resources

	<p>VIDEX VLE-F2e LED Floodlight with Motion Detector [pdf] User Manual</p> <p>VLE-F2e, LED Floodlight with Motion Detector, VLE-F2e LED Floodlight with Motion Detector, VLE-F2e LED Floodlight, LED Floodlight, Floodlight</p>
---	--