

VIDEX

VL-MLC-244, VL-MLC-364 LED Module



VIDEX VL-MLC-244, VL-MLC-364 LED Module User Manual

[Home](#) » [VIDEX](#) » VIDEX VL-MLC-244, VL-MLC-364 LED Module User Manual 

Contents

- 1 VIDEX VL-MLC-244, VL-MLC-364 LED Module
- 2 Product Information
- 3 Product Usage Instructions
- 4 Frequently Asked Questions
- 5 TECHNICAL PARAMETERS
- 6 PRODUCT'S PURPOSE AND APPLICATION
- 7 MOUNTING AND CONNECTION INSTRUCTIONS
- 8 FUNCTIONAL CHARACTERISTICS
- 9 MAINTENANCE AND SAFETY INSTRUCTIONS
- 10 STORAGE AND TRANSPORTATION
- 11 WARRANTY
- 12 Installation
- 13 Documents / Resources
 - 13.1 References

VIDEX

VIDEX VL-MLC-244, VL-MLC-364 LED Module



Product Information

Specifications

- Model: VL-MLC-244, VL-MLC-364
- Input Voltage: 175-250V AC, 50/60Hz
- Power Output: 24W for VL-MLC-244, 36W for VL-MLC-364
- Luminous Flux: 2900Lm for VL-MLC-244, 4350Lm for VL-MLC-364
- Color Temperature: 4000K
- Dimmable: No
- Color Rendering Index (Ra): 80
- Lifespan: 25,000 hours
- IP Rating: IP20
- No Flicker

Product Usage Instructions

Installation

1. Ensure the power supply is turned off before installation.
2. Mount the fixture securely in the desired location using appropriate hardware.
3. Connect the fixture to the power supply following the provided wiring diagram.

Operation

1. Turn on the power supply and switch on the fixture using the designated switch.
2. The light will illuminate with the specified color temperature and brightness.
3. Avoid operating the fixture in environments with high humidity or extreme temperatures.

Maintenance

1. Regularly clean the fixture using a soft, dry cloth to remove dust and debris.
2. Inspect the fixture for any signs of damage or wear and tear. Replace any faulty components immediately.
3. Do not attempt to repair or modify the fixture yourself. Contact a qualified technician for repairs.

Frequently Asked Questions

- **Q: Is the fixture compatible with dimmer switches?**
 - A: No, the fixture is not dimmable.
- **Q: What is the expected lifespan of the product?**
 - A: The product has a lifespan of 25,000 hours under normal operating conditions.
- **Q: What is the color rendering index (Ra) of the light?**
 - A: The color rendering index is 80, indicating good color accuracy of the light emitted.

TECHNICAL PARAMETERS

1. Rated input voltage and frequency;
2. Rated on-mode power;
3. Rated useful luminous flux;
4. Energy efficiency class in accordance with the European Commission Regulation 2019/2020;
5. Energy efficiency class in accordance with the technical regulation of Ukraine;

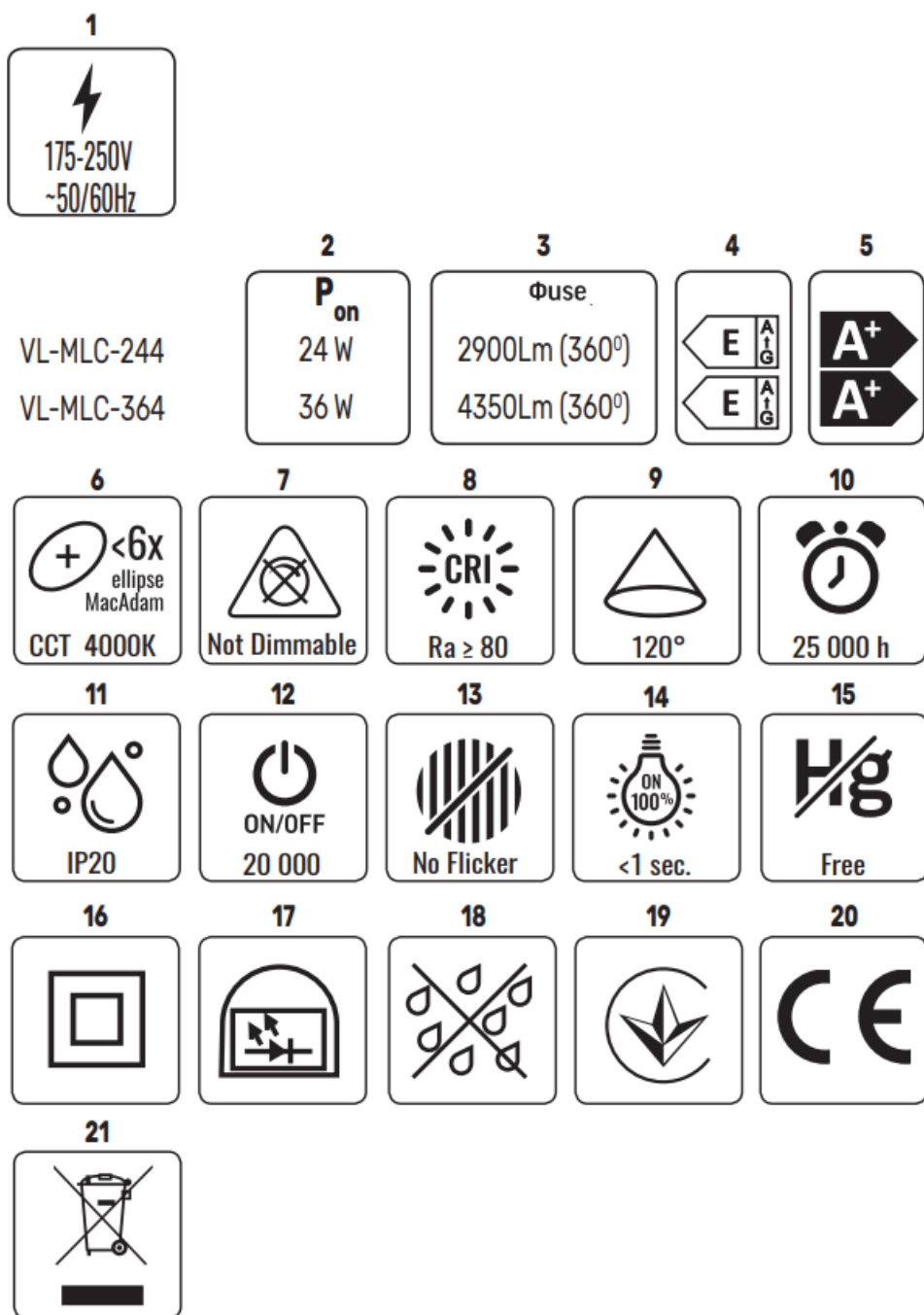
INTERPRETATION OF ICONS

6. Correlated color temperature;
7. The product is not compatible with light dimmers;
8. Color rendering index;
9. Beam angle;
10. Rated lifetime L70B50 (hours);
11. Class of protection against dust and moisture. Protection against solid foreign objects larger than 12 mm is provided;
12. On/off cycles;
13. The light has no noticeable flicker;
14. Time to reach 100% full light flux (seconds);
15. No mercury contains;
16. Class of protection against electric shock II – protection against electric shock is provided not only by basic insulation but also by double or reinforced insulation;
17. A built-in LED module designed as a replaceable part mounted in a fixture, shell, housing, etc., and not intended to be mounted outside the fixture, etc., without special precautions.
18. The product should be used in a luminaire that provides protection against water drops;
19. The product complies with the technical regulations of Ukraine;
20. The product meets the requirements of EU directives;

ENVIRONMENTAL PROTECTION

21. Pursuant to the provisions of the WEEE Act, it is forbidden to put waste equipment marked with the symbol of a crossed bin together with other waste. The user, wishing to get rid of electronic and electrical equipment, is

obliged to return it to a waste equipment collection point. There are no hazardous components in the equipment that have a particularly negative impact on the environment and human health. Overall dimensions (mm), product weight (g/kg), rated input current (mA), operating temperatures range (°C), production date and batch number are indicated on individual packaging; The Product contains no harmful substances; Product materials: Polycarbonate, aluminum; Shelf life before start of use is unlimited;



PRODUCT’S PURPOSE AND APPLICATION

The product is intended for use as a replacement light source for ceiling lights.

CONTENTS OF THE KIT

- LED module;
- User’s manual;

- Individual packaging.

MOUNTING AND CONNECTION INSTRUCTIONS

It is mandatory to switch off the electricity during the entire process related to the replacement of the light source. Read the instructions before installation. Installation must be performed by a specialist with appropriate qualifications. Please perform installation and connection according to the diagram below. Before the first use, it is necessary to check the correctness of the mechanical fastening and connection. The product can only be used in a network that meets the energy requirements and quality standards stipulated by law.

FUNCTIONAL CHARACTERISTICS

The product is not protected against dust and moisture. The product must be used in closed fixtures that have protection against water drops.

MAINTENANCE AND SAFETY INSTRUCTIONS

Any maintenance work should be carried out with the electricity turned off, and the product should be cooled down. The product may only be supplied with rated voltage or voltage within the given range. It is forbidden to use the product with a damaged light diffuser, damaged wiring or connection points. Do not cover the product with heat-insulating materials. **WARNING!** Do not look directly at the LED beam. The product cannot be used in adverse conditions, e.g. dust, water, moisture, vibration, explosive atmosphere, fumes or chemical fumes, etc. The product is not repairable. Do not attempt to repair a broken product as this will void your warranty. A used or damaged product should be disposed of in accordance with current regulations. Failure to follow these instructions may result in e.g. fire, burns, electrical shock, physical injury and other material and non-material damage. The manufacturer shall not be responsible for any damage resulting from the failure to follow the above instructions.

STORAGE AND TRANSPORTATION

Before delivery to the direct point of sale, the product must be stored in the manufacturer's packaging at a temperature from -20°C to +40°C, in a dry room and without exposure to direct sunlight. Transportation can be carried out by land, sea, air transport in the manufacturer's transport packaging.

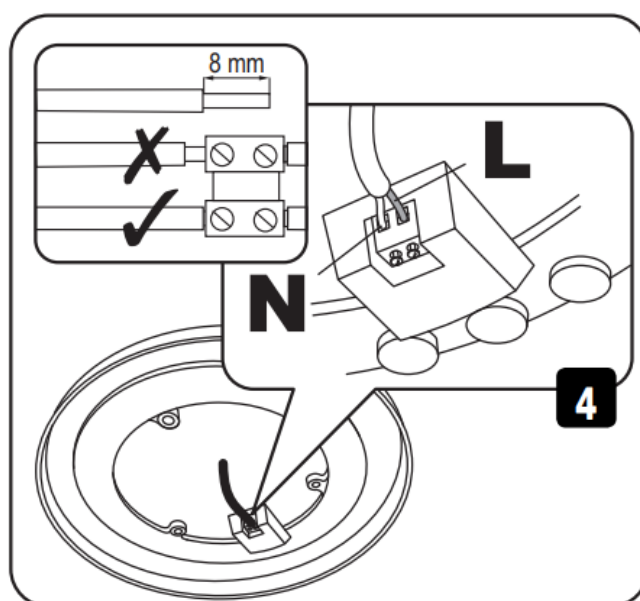
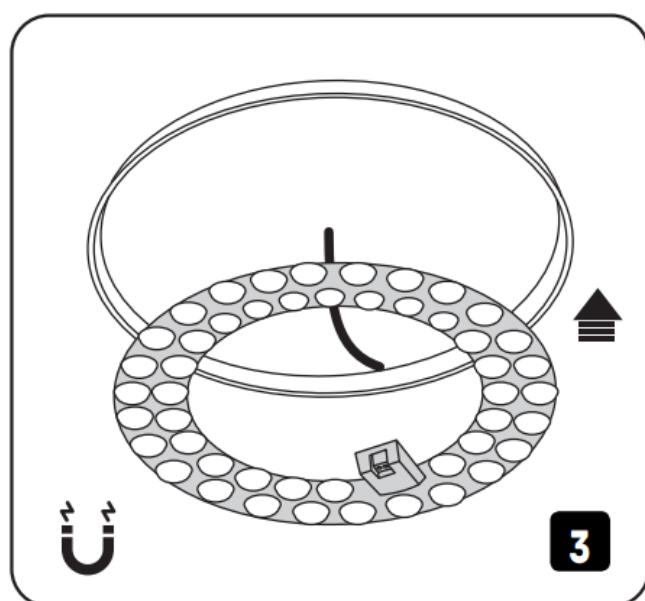
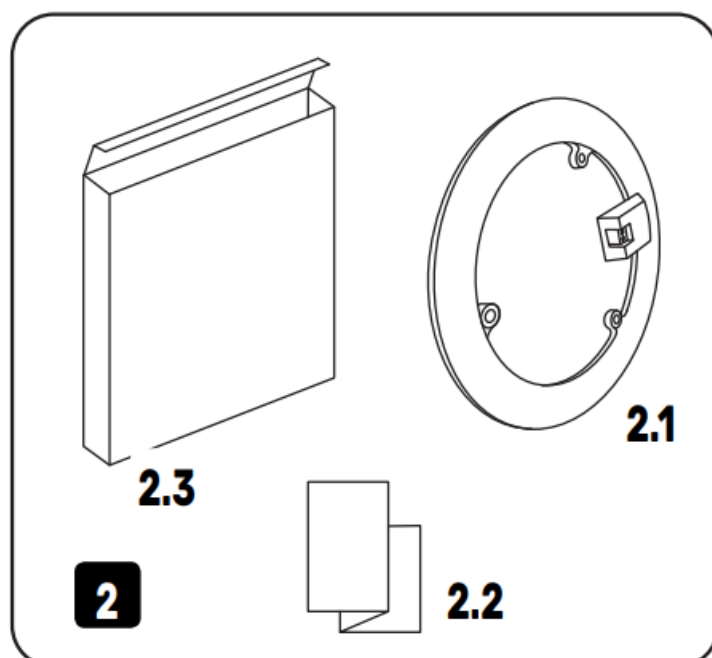
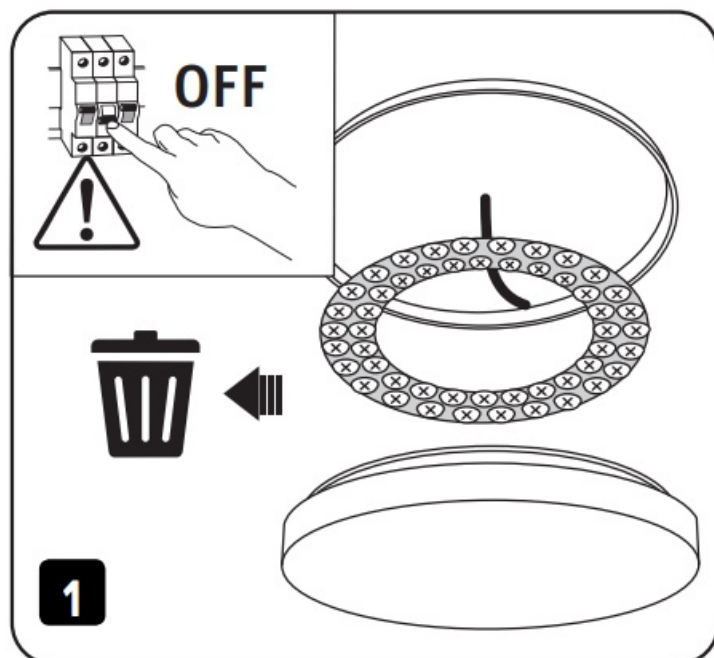
WARRANTY

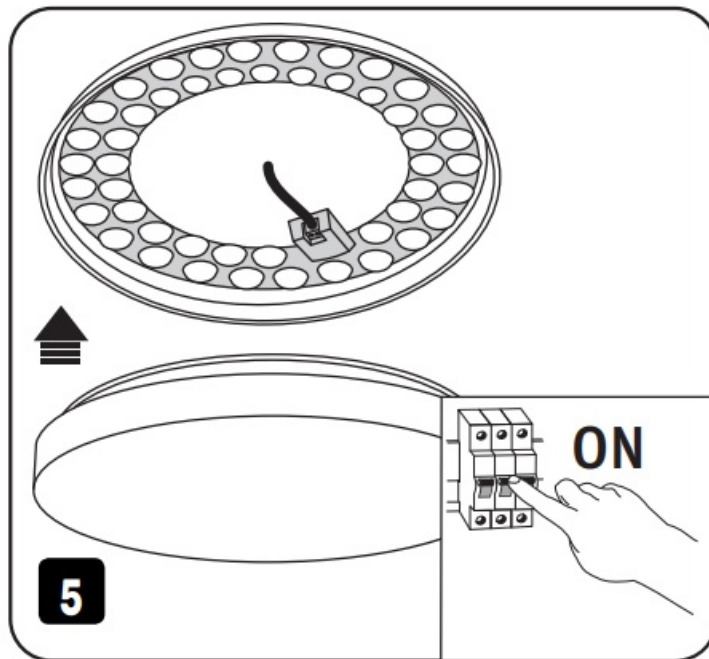
The warranty period for the product is indicated on the individual packaging and begins from the date of sale. During the warranty period, a faulty product can be exchanged or returned with proof of purchase and all components and accessories preserved. The following does not apply to the scope of limited warranty:

- Misuse the product and cause the product components damage;
- Unauthorized disassembly or the presence of deep mechanical damage to the product;
- Damage due to force majeure.

The manufacturer reserves the right to make changes to this user manual or technical changes to the product without prior notice.

Installation





WARRANTY CARD

INDEX

- Item
- Date and place of sale
- Date of exchange/return
- Seller's stamp and signature

www.videx.ua

Importer: Allegro Opt Sp. z o.o., ul. Mierzeja Wislana 11, 30-732 Krakow, Polska. Wyprodukowano w Chinach.

www.videx.com.pl

Allegro-opt PE, 106-G Heroiv Mariupolia street, Kropyvnytskyi, 25004, Ukraine

Documents / Resources

	<p>VIDEX VL-MLC-244, VL-MLC-364 LED Module [pdf] User Manual VL-MLC-244, VL-MLC-364, VL-MLC-244 VL-MLC-364 LED Module, VL-MLC-244 VL-MLC-364, L ED Module, Module</p>
--	--

References

- [ДЗН.Н-Н-Н-Д¹Д^{1/2}Д¹ Н-Д^{1/2}Н.ДμН€Д^{1/2}ДμН.-Д^{1/4}Д°Д³Д°Д·Д^{1/2} Videx.ua](#)
- [User Manual](#)

[Manuals](#), [Privacy Policy](#)

This website is an independent publication and is neither affiliated with nor endorsed by any of the trademark owners. The "Bluetooth®" word mark and logos are registered trademarks owned by Bluetooth SIG, Inc. The "Wi-Fi®" word mark and logos are registered trademarks owned by the Wi-Fi Alliance. Any use of these marks on this website does not imply any affiliation with or endorsement.