



Contents [[hide](#)]

- 1 [VIDEX TR06-304B,TR06-154B LED Track Light](#)
- 2 [Models](#)
- 3 [TECHNICAL PARAMETERS](#)
- 4 [CONTENTS OF THE KIT](#)
- 5 [MOUNTING AND CONNECTION INSTRUCTIONS](#)
- 6 [FUNCTIONAL CHARACTERISTICS](#)
- 7 [MAINTENANCE AND SAFETY INSTRUCTIONS](#)
- 8 [STORAGE AND TRANSPORTATION](#)
- 9 [WARRANTY](#)
- 10 [TECHNICAL PARAMETERS](#)
- 11 [What In Box](#)
- 12 [Installation](#)
- 13 [Documents / Resources](#)
 - 13.1 [References](#)

VIDEX

VIDEX TR06-304B,TR06-154B LED Track Light



Models

INDEX VL-TR06-154B



INDEX VL-TR06-304B



TECHNICAL PARAMETERS

1. Rated input voltage and frequency;
2. Rated on-mode power;
3. Rated useful luminous flux (use), measured in a narrow cone of 90°;
4. Energy efficiency class in accordance with the European Commission Regulation 2019/2020;
5. Energy efficiency class in accordance with the technical regulation of Ukraine;

INTERPRETATION OF ICONS

6. Correlated color temperature:
7. The product is not compatible with light dimmers.
8. Color rendering index;
9. Beam angle;

10. Rated lifetime L70B50 (hours);
11. Class of protection against dust and moisture. Protection against solid foreign objects larger than 12mm is provided.
12. On/off cycles;
13. The light has no noticeable flicker.
14. Product compliant with standards of ecodesign and energy labeling according to Commission Regulation (EU) 2019/2020;
15. Time to reach 100% full light flux (seconds);
16. No mercury is contained.
17. Class of protection against electric shock II – protection against electric shock is provided not only by basic insulation, but also by double or reinforced insulation;
18. A damaged light diffuser must be replaced.
19. Minimum distance from the illuminated object;
20. For indoor use only:
21. The product complies with the technical regulations of Ukraine:
22. The product meets the requirements of EU directives.

ENVIRONMENTAL PROTECTION

23. Pursuant to the provisions of the WEEE Act, it is forbidden to put waste equipment marked with the symbol of a crossed bin together with other waste. The user, wishing to get rid of electronic and electrical equipment, is obliged to return it to a waste equipment collection point. There are no hazardous components in the equipment that have a particularly negative impact on the environment and human health.

Overall dimensions (mm), product weight (g/kg), rated input current (mA), operating temperature range (°C), production date and batch number are indicated on individual packaging: Product contains no harmful substances. Product materials: Polycarbonate, aluminum; Shelf life before start of use is unlimited.

PRODUCT'S PURPOSE AND APPLICATION

The product is intended for the general lighting of domestic and commercial premises.

CONTENTS OF THE KIT

- LED Light;

- User's manual;
- Individual packaging.

MOUNTING AND CONNECTION INSTRUCTIONS

It is mandatory to switch off the electricity during installation. Read the instructions before installation. Please perform installation and connection according to the diagram below. Before the first use, it is necessary to check the correctness of the mechanical fastening and connection. The product can only be used in a network that meets the energy requirements and quality standards stipulated by law.

FUNCTIONAL CHARACTERISTICS

The product should be used only indoors. The product is not protected against dust and moisture.

MAINTENANCE AND SAFETY INSTRUCTIONS

Any maintenance works should be carried out with the electricity turned off, and the product should be cooled down. Clean only with soft and dry cloths. Do not use chemical detergents. The product may only be supplied with rated voltage or voltage within the given range. It is forbidden to use the product with a damaged light diffuser, damaged wiring or connection points. Do not surround the product with heat-insulating materials, ensure free air access. **WARNING!** Do not look directly at the LED beam. Do not attempt to repair or disassemble the product, as this may impair its performance and void the warranty. The product cannot be used in adverse conditions, e.g. dust, water, moisture, vibration, explosive atmosphere, fumes or chemical fumes, etc. A used or damaged product should be disposed of in accordance with current regulations. Failure to follow these instructions may result into e.g. fire, burns, electrical shock, physical injury and other material and non-material damage. The manufacturer shall not be responsible for any damage resulting from the failure to follow above instructions.

STORAGE AND TRANSPORTATION

Before delivery to the direct point of sale, the product must be stored in the manufacturer's packaging at a temperature from -20°C to +40°C, in a dry room and

without exposure to direct sunlight. Transportation can be carried out by land, sea, air transport in the manufacturer's transport packaging.

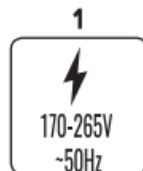
WARRANTY

The warranty period for the product is indicated on the individual packaging and begins from the date of sale. During the warranty period, a faulty product can be exchanged or returned with prove of purchase and all components and accessories preserved. The following does not apply with the scope of limited warranty:

- Misuse the product and cause the product's components damage:
- Unauthorized disassembly or the presence of deep mechanical damage to the product;
- Damage due to force majeure.

The manufacturer reserves the right to make changes to this user manual or make technical change to the product without prior notice.

TECHNICAL PARAMETERS



INDEX

VL-TR06-154B

VL-TR06-304B

2 P_{on}

15 W

30 W

3 (Φuse)

1300 Lm (90°)

2600 Lm (90°)

4



5



6



7



8



9



10



11



12



13



14



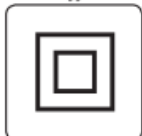
15



16



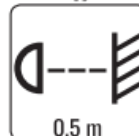
17



18



19



20



21



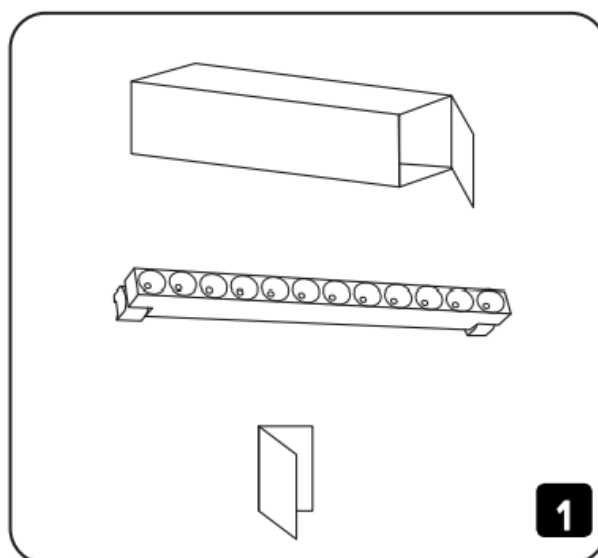
22



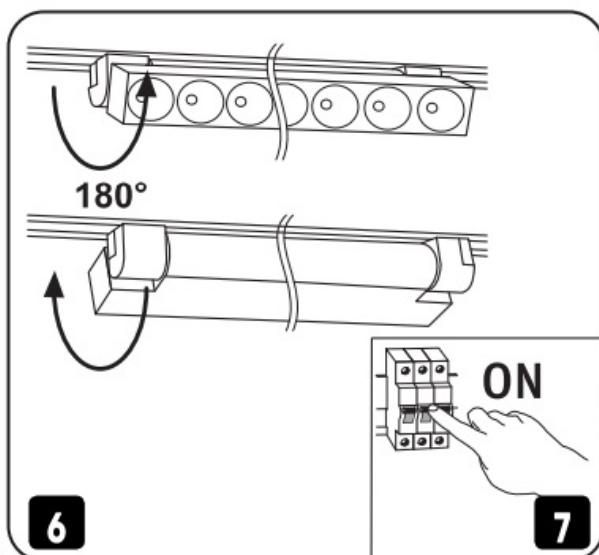
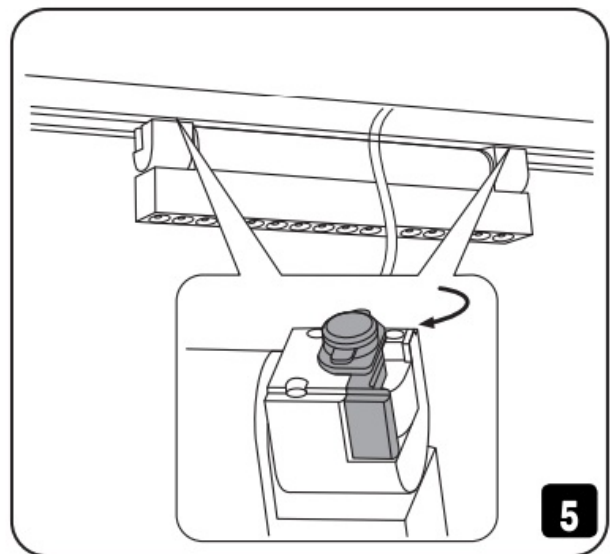
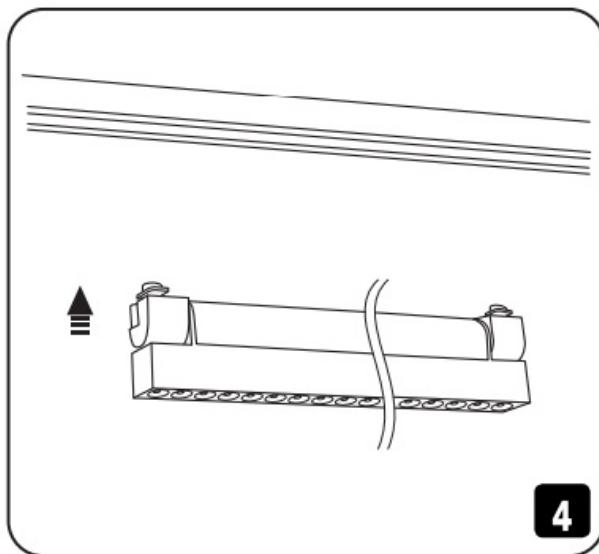
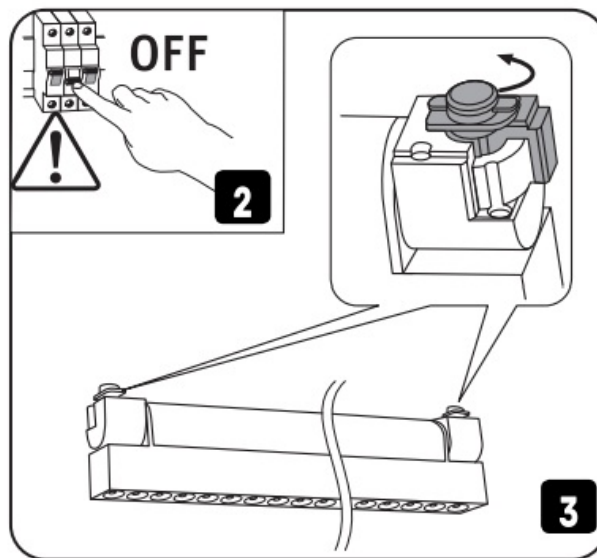
23



What In Box



Installation



WARRANTY CARD

- INDEX
- Item
- Date and place of sale

- Date of exchange/return
- Seller's stamp and signature


www.videx.ua

Importer: Allegro Opt Sp. z O.O., Handlowa 23, 05-120 Legionowo, Polska. Made in China/Wyprodukowano w Chinach.

www.videx.com.pl

Allegro-opt PE, 106-G Heroiv Mariupolia street, Kropyvnytskyi, 25004, Ukraine.

Documents / Resources

	<p>VINDEX TR06-304B,TR06-154B LED Track Light [pdf] User Manual</p> <p>TR06-304B, TR06-154B, TR06-304B TR06-154B LED Track Light, TR06-304B TR06-154B, LED Track Light, Track Light</p>
---	---

References

- [User Manual](#)

VIDEX

LED Track Light, TR06-154B, TR06-304B, TR06-304B TR06-154B, TR06-304B TR06-154B LED Track Light, Track light, VIDEX

—Previous Post

[VIDEX BA286 LED Rechargeable Bike Light Instruction Manual](#)

Next Post—

[VIDEX TR05-154B-TR05-304B LED Track Light User Manual](#)

Leave a comment

Your email address will not be published. Required fields are marked *

Comment *

Name

Email

Website

☐ Save my name, email, and website in this browser for the next time I comment.

Post Comment

Manuals+, Privacy Policy | @manuals.plus | YouTube

This website is an independent publication and is neither affiliated with nor endorsed by any of the trademark owners. The "Bluetooth®" word mark and logos are registered trademarks owned by Bluetooth SIG, Inc. The "Wi-Fi®" word mark and logos are registered trademarks owned by the Wi-Fi Alliance. Any use of these marks on this website does not imply any affiliation with or endorsement.