

VIDEOTEC COMBMP2 Plate for Assembly of COMB Instruction Manual

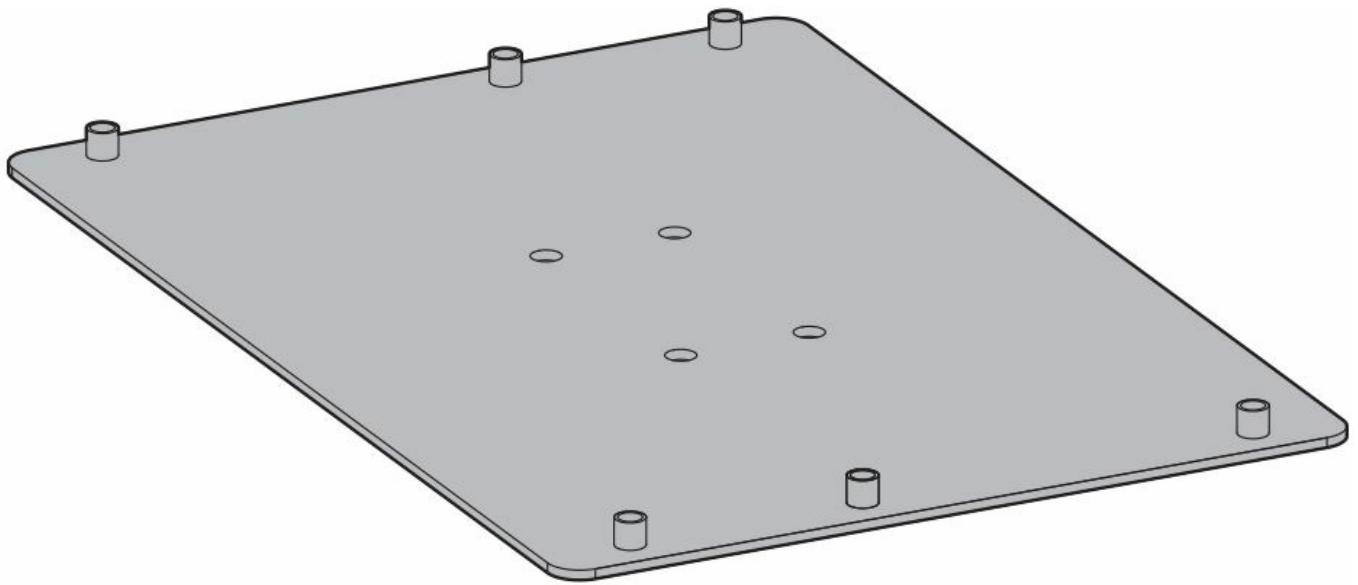
[Home](#) » [VIDEOTEC](#) » VIDEOTEC COMBMP2 Plate for Assembly of COMB Instruction Manual 

Contents

- [1 VIDEOTEC COMBMP2 Plate for Assembly of COMB](#)
- [2 Product Information](#)
- [3 Product Usage Instructions](#)
- [4 About this manual](#)
- [5 Notes on copyright and information on trademarks](#)
- [6 Safety rules](#)
- [7 Identification](#)
- [8 Preparing the product for use](#)
- [9 Installation](#)
- [10 Technical data](#)
- [11 Contact](#)
- [12 Documents / Resources](#)
 - [12.1 References](#)
- [13 Related Posts](#)



VIDEOTEC COMBMP2 Plate for Assembly of COMB



Product Information

- **Product Name:** COMBMP2
- **Description:** Plate for assembly of the COMB with UEAP pole adaptor or with UEAC corner adaptor
- **Language:** English (EN)
- **Manufacturer:** Not specified

Product Usage Instructions

1. About this manual

- Read all the documentation supplied carefully before installing and using this product.
- Keep the manual in a convenient place for future reference.

2. Typographical conventions

- **CAUTION!** Medium level hazard. This operation is very important for the system to function properly. Please read the procedure described very carefully and carry it out as instructed.
- **INFO** Description of system specifications. We recommend reading this part carefully in order to understand the subsequent stages.

3. Safety rules

- **CAUTION!** Device installation and maintaining must be performed by specialist technical staff only.

4. Identification

- **Product description and type designation:** Plate for assembly of the COMB with UEAP pole adaptor or with UEAC corner adaptor.

5. Preparing the product for use

- Any change that is not expressly approved by the manufacturer will invalidate the warranty.

6. Unpacking

- When the product is delivered, make sure that the package is intact and that there are no signs that it has been dropped or scratched.
- If there are obvious signs of damage, contact the supplier immediately.
- When returning a faulty product we recommend using the original packaging for shipping.
- Keep the packaging in case you need to send the product for repairs.

7. Safely disposing of packaging material

- The packaging material can all be recycled. The installer technician will be responsible for separating the material for disposal, and in any case for compliance with the legislation in force where the device is to be used.

8. Preparatory work before installation

- Choose an installation surface that is strong enough to sustain the weight of the device, also bearing in mind particular environmental aspects, such as exposure to strong winds.
- It should be installed so that no one can be hit by moving parts. It should be installed so that moving parts cannot hit other objects and create hazardous situations.
- Make sure the product is to be secured to the building before operation.
- For technical services, consult only and exclusively authorized technicians.
- Since the user is responsible for choosing the surface to which the unit is to be anchored, we do not supply the fixing devices for attaching the unit firmly to the particular surface. The installer is responsible for choosing fixing devices suitable for the specific purpose on hand.

9. Installation

- **Fixing with the pole collar:** To fix the support plate (01) using the 4 grower washers in stainless steel and the 4 M8 screws in stainless steel supplied.
- Make sure the threads are free of dirt and debris. Apply a generous amount of thread-locking compound (Loctite 270) into the threaded holes in the base of the device. Tighten the screws.

About this manual

Read all the documentation supplied carefully before installing and using this product. Keep the manual in a convenient place for future reference.

Typographical conventions

CAUTION

- Medium-level hazard.
- This operation is very important for the system to function properly. Please read the procedure described very carefully and carry it out as instructed.

INFO

- Description of system specifications.
- We recommend reading this part carefully in order to understand the subsequent stages.

Notes on copyright and information on trademarks

- The mentioned names of products or companies are trademarks or registered trademarks.

Safety rules

CAUTION: Device installation and maintaining must be performed by specialist technical staff only.

- Before starting any operation, make sure the power supply is disconnected.
- The manufacturer declines all responsibility for any damage caused by an improper use of the appliances mentioned in this manual. Furthermore, the manufacturer reserves the right to modify its contents without any prior notice. The documentation contained in this manual has been collected and verified with great care. The manufacturer, however, cannot take any liability for its use. The same thing can be said for any person or company involved in the creation and production of this manual.
- Use only original spare parts. Non-original spare parts could cause fire, electrical discharge or other hazards.

Identification

Product description and type designation

- Plate for assembly of the COMB with UEAP pole adaptor or with UEAC corner adaptor.

Preparing the product for use

- Any change that is not expressly approved by the manufacturer will invalidate the warranty.

Unpacking

- When the product is delivered, make sure that the package is intact and that there are no signs that it has been dropped or scratched.
- If there are obvious signs of damage, contact the supplier immediately.
- When returning a faulty product we recommend using the original packaging for shipping.
- Keep the packaging in case you need to send the product for repairs.

Safely disposing of packaging material

- The packaging material can all be recycled.
- The installer technician will be responsible for separating the material for disposal, and in any case for compliance with the legislation in force where the device is to be used.

Contents

Check the contents to make sure they correspond with the list of materials as below:

- Fixing plate
- Bolts and screws
- Instruction manual

Preparatory work before installation

Warning

- Choose an installation surface that is strong enough to sustain the weight of the device, also bearing in mind

particular environmental aspects, such as exposure to strong winds.

- It should be installed so that no one can be hit by moving parts. It should be installed so that moving parts cannot hit other objects and create hazardous situations.
- Make sure the product is to be secured to building before operation.
- For technical services, consult only and exclusively authorized technicians.
- Since the user is responsible for choosing the surface to which the unit is to be anchored, we do not supply the fixing devices for attaching the unit firmly to the particular surface. The installer is responsible for choosing fixing devices suitable for the specific purpose on hand.

Installation

Fixing with the pole collar

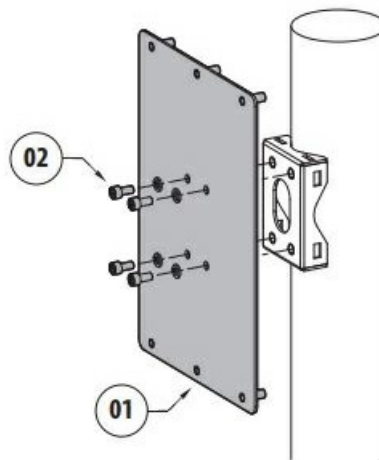


Fig. 1

- To fix the support plate (01) using the 4 grower washers in stainless steel and the 4 M8 screws in stainless steel supplied.
- Make sure the thread are free of dirt and debris.
- Apply a generous amount of thread locking compound (Loctite 270) into the threaded holes in the base of the device.
- Tighten the screws.

Pay attention to the fixing.

Tightening torque: 18Nm.

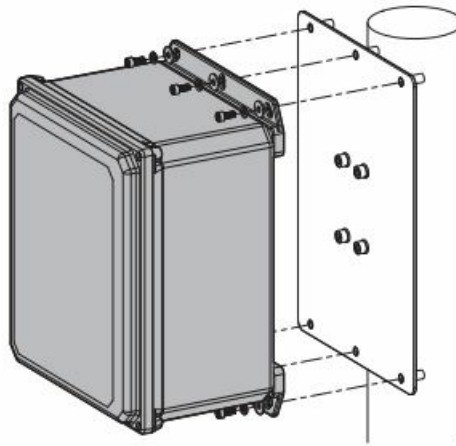


Fig. 2

- The thread compound must cure for one hour, allow for this period prior to completing the installation.
- Fix the box on the plate using the 6 flat washers, the 6 grower washers in stainless steel and the 6 hexagonal head screws in stainless steel supplied.

Make sure the thread are free of dirt and debris.

- Do not apply threadlocker to secure the box to the plate.

Tighten the screws.

Pay attention to the fixing. Tightening torque: 2.5Nm.

Fixing with the corner adaptor

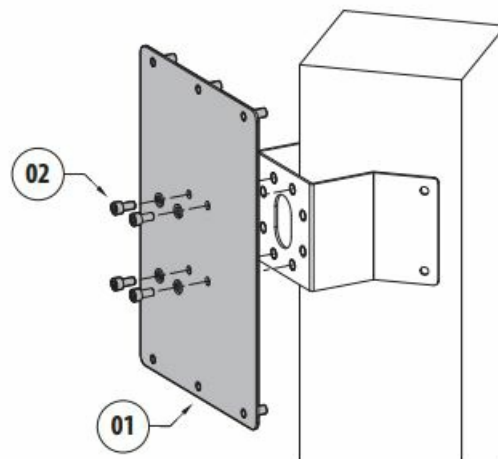


Fig. 3

- To fix the support plate (01) using the 4 grower washers in stainless steel and the 4 M8 screws in stainless steel supplied.
- Make sure the thread are free of dirt and debris.
- Apply a generous amount of thread locking compound (Loctite 270).
- Tighten the screws.

Warning: Pay attention to the fixing. Tightening torque: 18Nm.

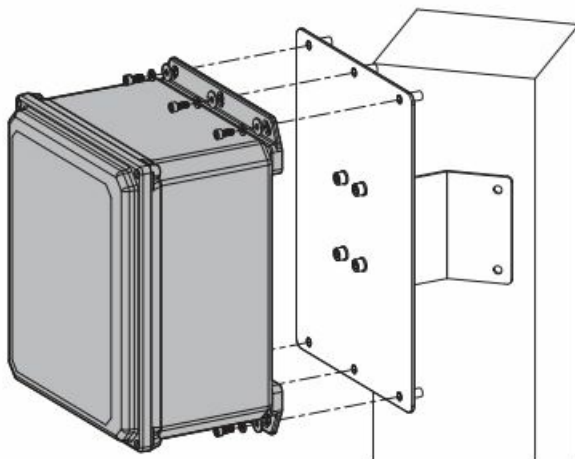


Fig. 4

- The thread compound must cure for one hour, allow for this period prior to completing the installation.
- Fix the box on the plate using the 6 flat washers, the 6 grower washers in stainless steel and the 6 hexagonal head screws in stainless steel supplied.

Make sure the thread are free of dirt and debris.

- Do not apply threadlocker to secure the box to the plate.
- Tighten the screws.

Warning: Pay attention to the fixing. Tightening torque: 2.5Nm.

Technical data

Mechanical

- In stainless steel
- **Suitable for:** UEAP, UEAC
- **Dimensions:** 358×247.6×11.7mm (14×9.7×0.4in)
- **Unit weight:** 2.1kg (4.6lb)

Technical drawings

The indicated measurements are expressed in millimetres.

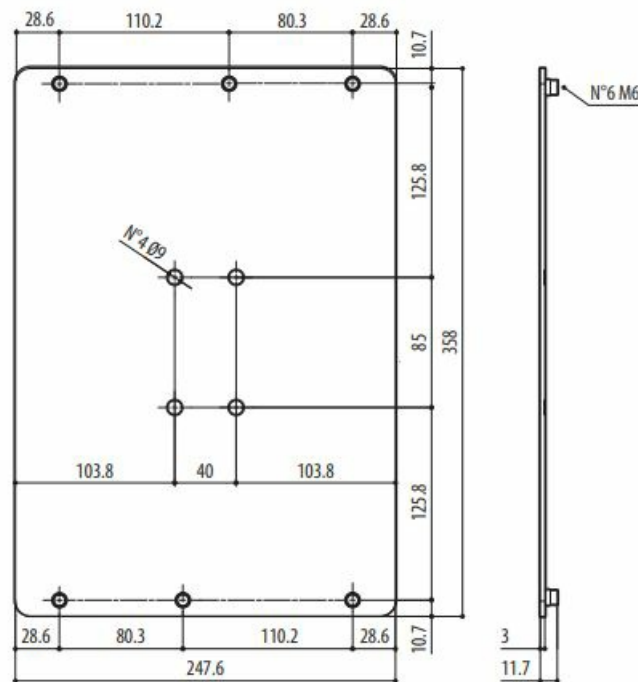


Fig. 5 COMBMP2.


Contact

Headquarters Italy Videotec s.r.l.

- Via Friuli, 6 – I-36015 Schio (VI) – Italy
- **Tel:** +39 0445 697411
- **Fax:** +39 0445 697414
- **Email:** info@videotec.com
- www.videotec.com



Documents / Resources

 <p>COMBMP2 Plate for Assembly of COMB</p> <p> <input type="checkbox"/> English - Instruction Manual <input type="checkbox"/> Italian - Istruzioni di montaggio <input type="checkbox"/> Spanish - Instrucciones de montaje <input type="checkbox"/> French - Instructions de montage <input type="checkbox"/> German - Montageanleitung <input type="checkbox"/> Chinese - 安装说明 </p>	<p>VIDEOTEC COMBMP2 Plate for Assembly of COMB [pdf] Instruction Manual</p> <p>COMBMP2 Plate for Assembly of COMB, COMBMP2, Plate for Assembly of COMB, Plate</p>
--	---

References

-  [Video Security Products | Videotec](#)