



Videolink P2 IP Camera User Manual

[Home](#) » [Videolink](#) » Videolink P2 IP Camera User Manual 

Contents

- [1 Videolink P2 IP Camera](#)
- [2 Product Information](#)
- [3 Fixed Position Tracking](#)
- [4 Add and manage cameras using PC software](#)
- [5 Camera PTZ Control Command-List](#)
- [6 Videolink camera software and manual download](#)
- [7 Documents / Resources](#)
 - [7.1 References](#)
- [8 Related Posts](#)



Videolink P2 IP Camera



Product Information

Specifications

- Model: Videolink IP Camera
- Mobile App: Videolink
- Website: <http://www.yucvision.com/video-link-Download.html>
- Supported Platforms: Android, iOS

Part 1: Connect and manage cameras using mobile APP

To connect and manage your Videolink IP Camera using the mobile app, please follow these steps:

Step 1: Download and Install the App

- Open the Google Play Store or Apple App Store on your mobile phone.
- Search for “Video link” and download the app.
- Install the app on your mobile phone.

Step 2: Register an Account

- Open the Videolink app.
- Register an account using your email or mobile phone number.
- Use the registered account to log in to the app.

Step 3: Connect the Camera to the App

- After logging in to the app, wait for a few seconds.
- The app will automatically enter the camera matching interface.
- The camera will start to match the code through sound waves.
- When you hear a sound on your phone, it means that the camera is successfully connected to your wireless router via WiFi.
- If your camera does not have a microphone and a speaker, you can align the QR code on the phone screen with the camera lens to add the camera.
- Click the camera on the app interface to enter the camera's monitoring and management interface. The camera has been added successfully.

Step 4: Add Cameras via LAN Connection

- If the QR code cannot be found on the camera, you can add the camera through LAN search.
- Click "Click here to add a device" on the app interface.
- Enter the LAN search page.
- The app will automatically search for the camera.
- Click the camera to complete the addition.

Step 5: Turn On/Off Auto Humanoid Tracking

- To turn on/off auto humanoid tracking, follow these steps:

Fixed Position Tracking

- Control the PTZ button to rotate the camera to your desired position (set a Return position).
- Switch the PTZ control interface to SENIOR setting interface.
- Input "88" and click the Set button. The tracking return position (Home position) is set successfully.
- Click the Start Track button to automatically turn on the tracking function.
- Click the Stop Track button to automatically turn off the tracking function.

Part 2: Add and manage cameras using PC software

Step 1: Install Search Tool on Your PC

- Run "AjDevTools_V5.1.9_20201215.exe" and complete the installation process.
- Run the software.

Step 2: Modify Camera Settings

In the software, you can modify the IP address of the camera, upgrade the firmware, and adjust other parameter settings.

- Right-click on the IP address to open the camera with a browser.
- Enter the browser login interface.
- Login with the username "admin" and password "123456".

- Click “Login” to access the camera settings.

Step 3: Search and Add Cameras

- Install the LMS computer software.
- Follow the prompts to complete the software installation.

FAQ

- Q: Where can I download the Videolink app?
- A: You can download the Videolink app from Google Play Store or Apple App Store.
- Q: How do I register an account in the Videolink app?
- A: Open the app and register using your email or mobile phone number.
- Q: How do I add a camera using LAN connection?
- A: If you cannot find the QR code on the camera, click “Click here to add a device” on the app interface, enter the LAN search page, and then select and add the camera.
- Q: How do I turn on/off auto humanoid tracking?
- A: To turn on auto humanoid tracking, follow the instructions provided in the user manual. To turn it off, click the Stop Track button in the app or software.
- Q: How do I access camera settings using PC software?
- A: Install the provided PC software and run it. You can then modify camera settings, upgrade firmware, and perform other parameter adjustments.

Videolink IP Camera Manual

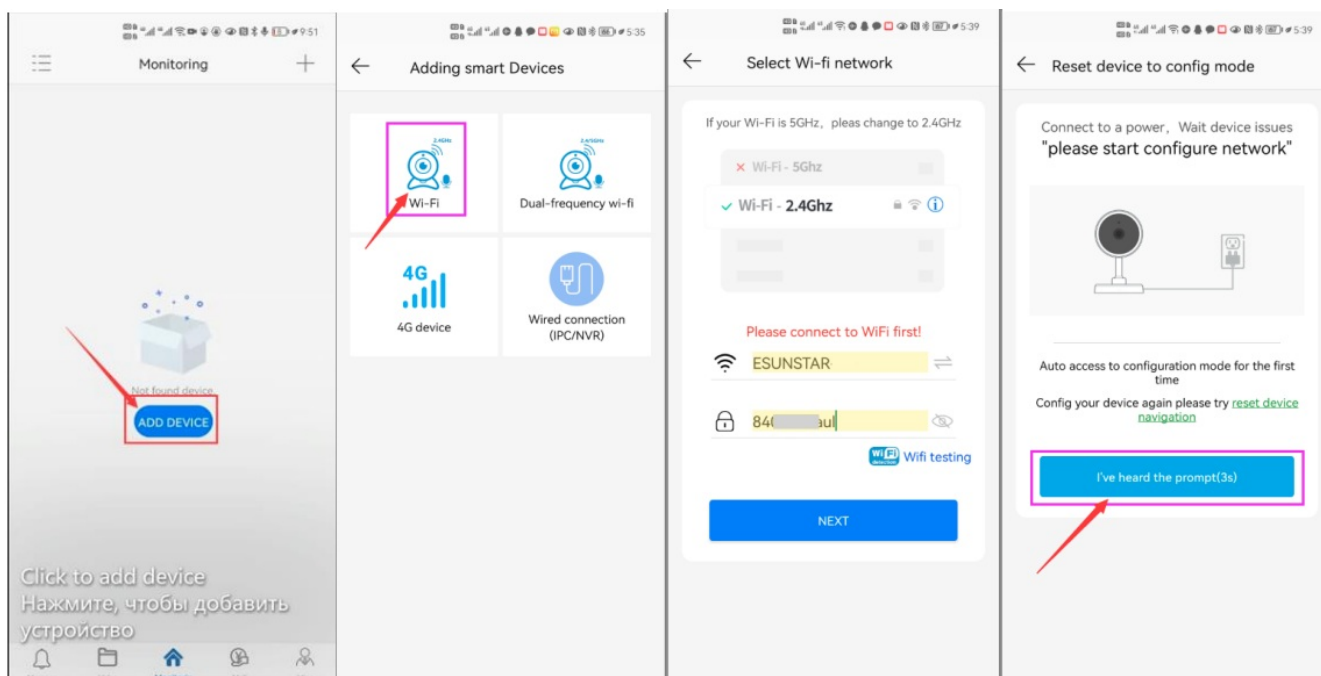
Connect and manage cameras using mobile APP

All software and Manual download weblink: <http://www.yucvision.com/videolink-Download.html>

Please go google play or Apple store download mobile APP,the name is Videolink and install it into your mobile phone The first time you run the APP, you need to register an account. You can use your email or mobile phone number to register an account, and then use the registered account to log in to the APP.

Configure the camera using WIFI

1. If your camera has WIFI function. Before connecting the power adapter of the camera, please make sure that the LAN port of the camera is not connected to the Ethernet cable (if you have connected it, please disconnect it and press the reset button for 5 seconds to restore the camera to factory settings). After connecting the power, wait 10 seconds.
2. Before using the mobile APP to configure the camera, please connect your mobile phone to your WIFI router via WIFI.
3. Open the APP and click the Add button to add a camera (as shown in Figure 1). And select WIFI (as shown in Figure 2), the software will automatically obtain the WIFI of the mobile phone, and please enter the WIFI password (the WIFI connection password of the wireless router). Click Next (as shown in Figure 3)



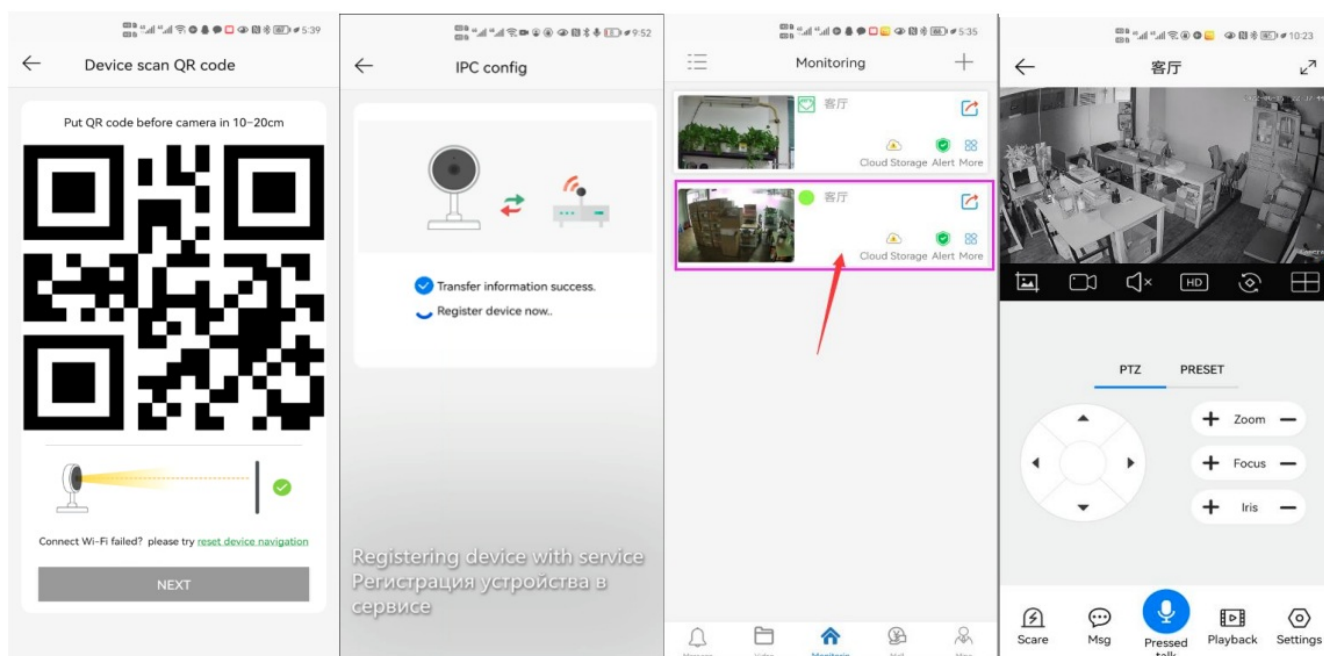
1

2

3

4

4. After entering the interface of Figure 4, wait for a few seconds, the APP will automatically enter the interface of Figure 5, and the camera will start to match the code through sound waves. When you hear a “di” on the phone, it means that the camera is successfully connected to your wireless router via WIFI (as shown in Figure 6). If your camera does not have a microphone and a speaker at the same time, the sound wave code matching cannot be completed, but you can also add the camera after aligning the QR code on the phone screen with the camera lens. Click the camera on Figure 7, and you will enter the camera’s monitoring and management interface (as shown in Figure 8). The camera has been added successfully.



5

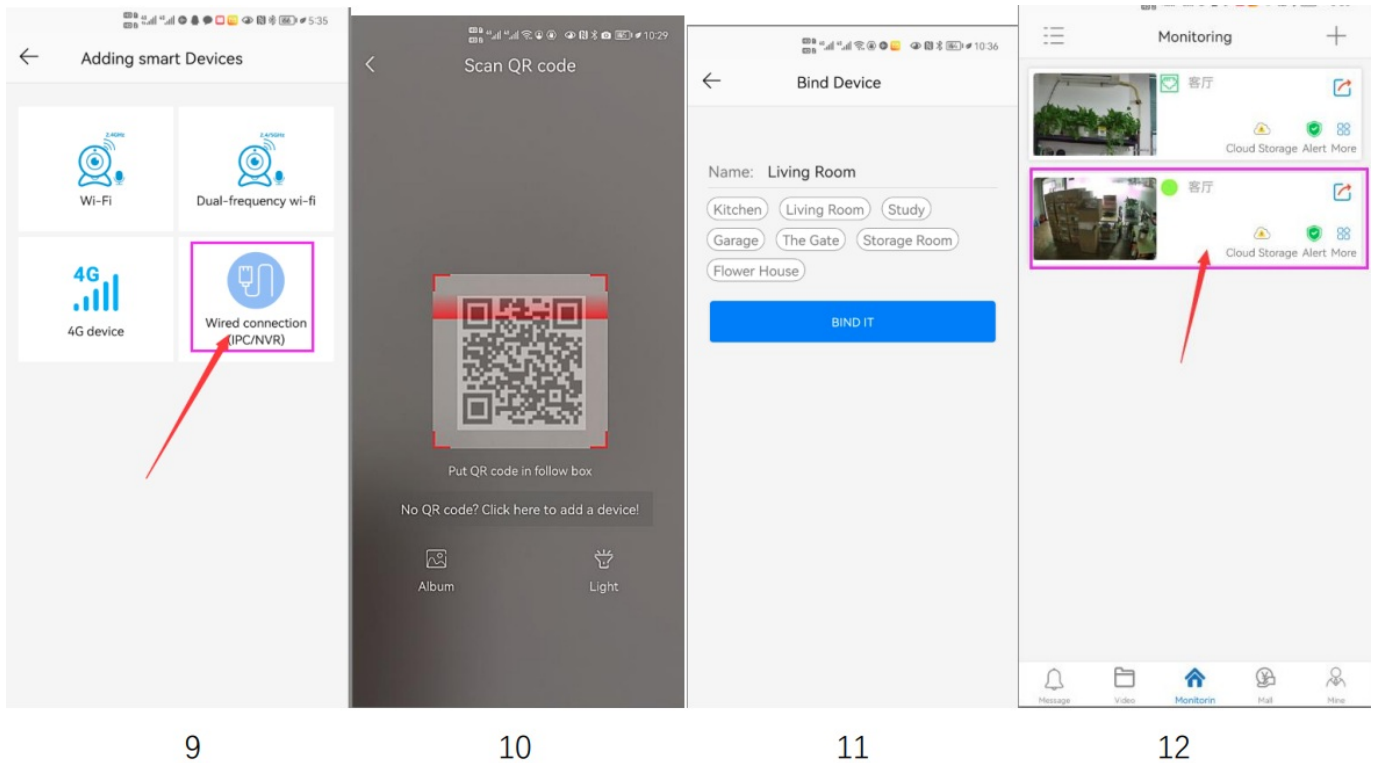
6

7

8

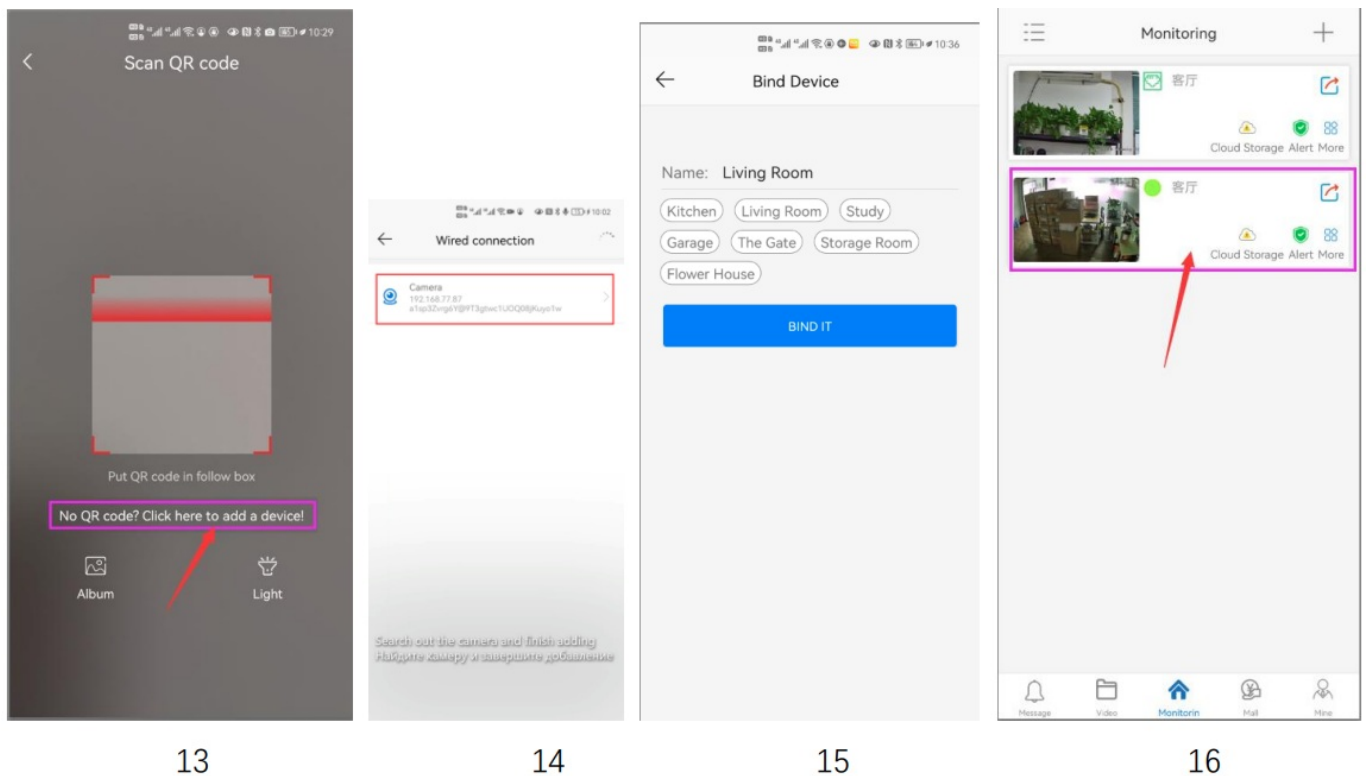
Add a camera by scanning a QR code

If your camera does not have WIFI function, please connect the ethernet cable to your switch/router and connect the power adapter. Select “Wired connection camera”, as shown in Figure 9, enter the interface of scanning the QR code to add a camera, point the mobile phone at the QR code on the camera body to scan (as shown in Figure 10), after scanning is successful, please provide your Customize a name for the camera, and click “BIND IT” to complete the addition (as shown in Figure 12)

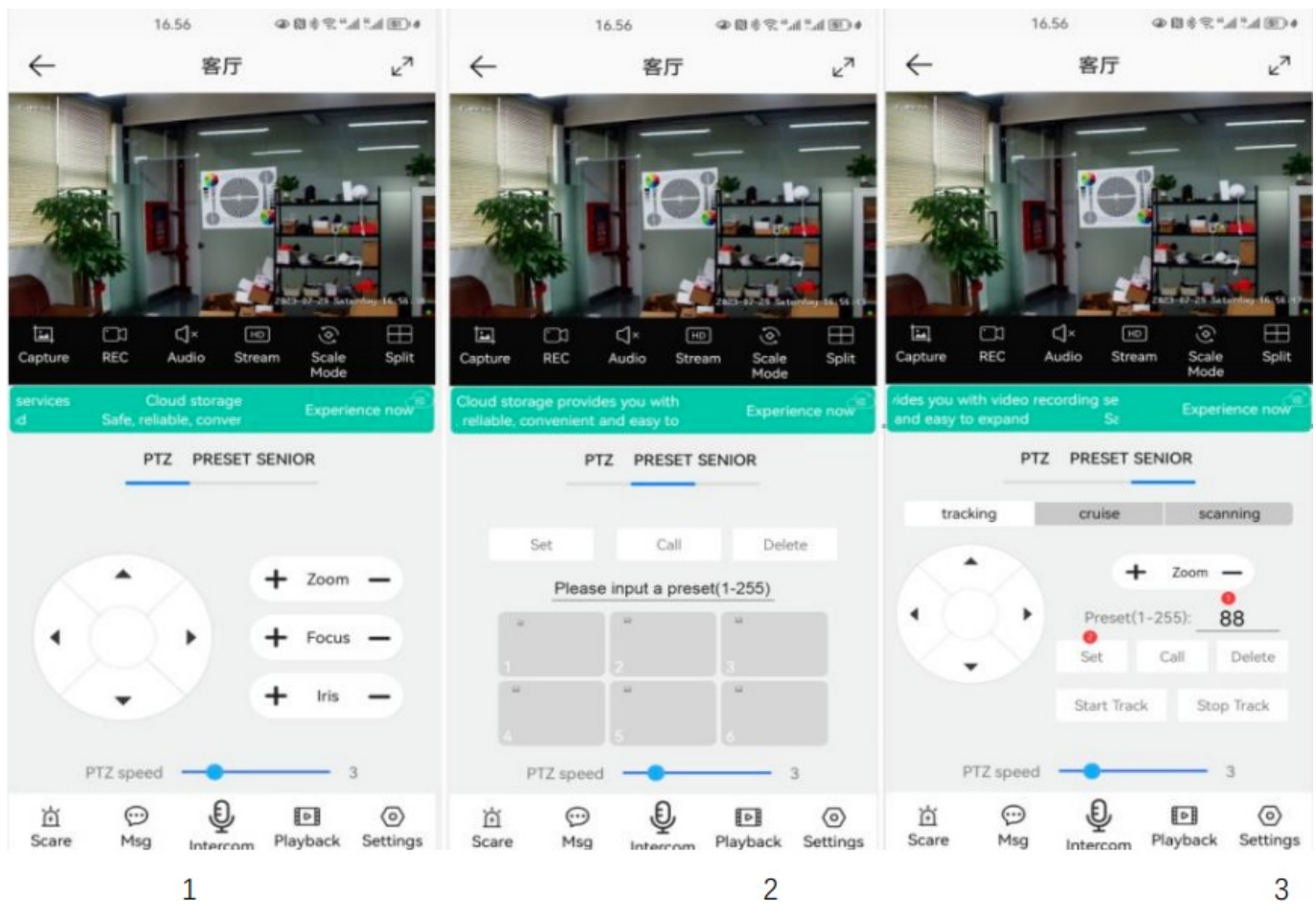


Add cameras via LAN connection

If the QR code cannot be found on the camera, you can click “Click here to add a device” to add the camera through the LAN search (as shown in Figure 12), enter the search page, and the APP will automatically search for the camera, as shown in Figure 13 display, and then click the camera to complete the addition.



How to Turn on/off auto humanoid Tracking



Fixed Position Tracking

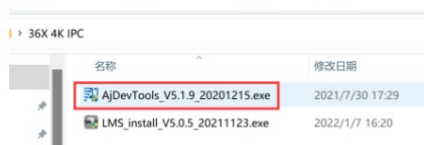
1. Control the PTZ button to rotate the camera to your desired position (set a Return position)
2. Switch the PTZ control interface to “SENIOR” setting interface.
3. Input 88, Then click “Set” button. The tracking return position (Home position) set successfully
4. Click “Start Track” button, The camera will automatically turn on the tracking function
5. Click “Stop Track” button, the camera will automatically turn off the tracking function

Add and manage cameras using PC software

Install search tool on your PC

1. Run “AjDevTools_V5.1.9_20201215.exe” and complete the installation

1, Run “AjDevTools_V5.1.9_20201215.exe” and complete the installation



1



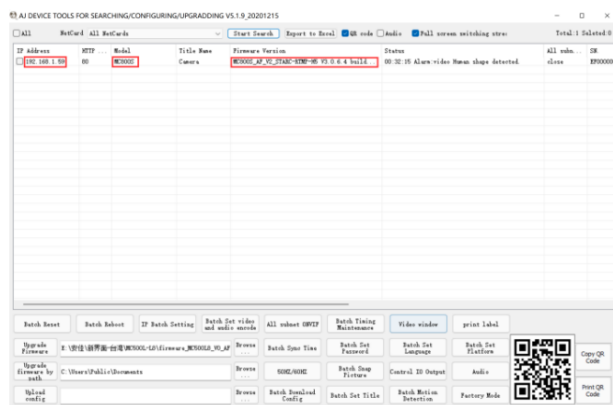
2



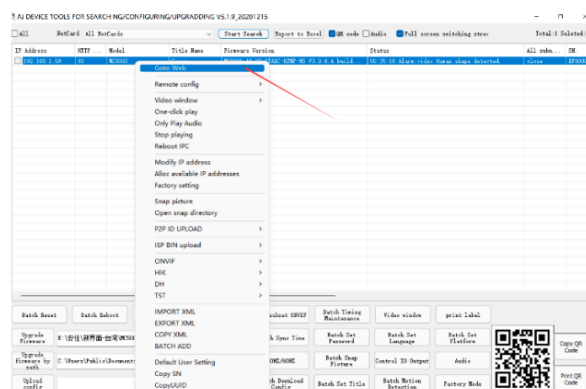
3

2. Run the software, as shown below (4)

2, Run the software, as shown below (4)

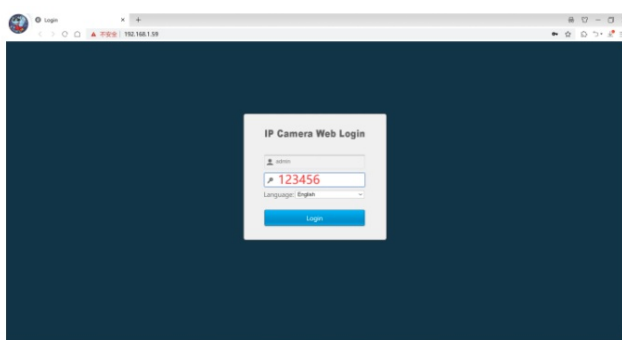


4



5

- Here you can modify the IP address of the camera, upgrade the firmware and other parameter settings. Right-click on the IP address to open the camera with a browser, as shown in figure 5.
- Enter the browser login interface, login user name: admin, password: 123456, as shown in the following figure (if the browser prompts you to download and install the plug-in, please download and install it): Then click login. as shown in the figure 7



6

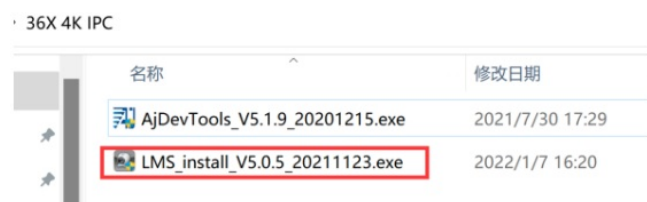


7

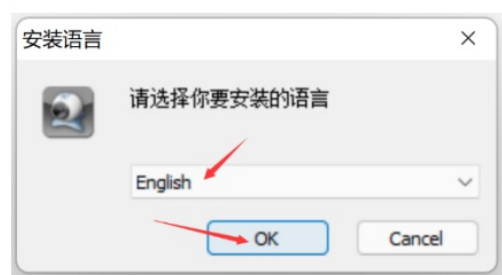
Use PC software to search and add cameras

- Install the LMS computer software.

1, Install the LMS computer software.



8



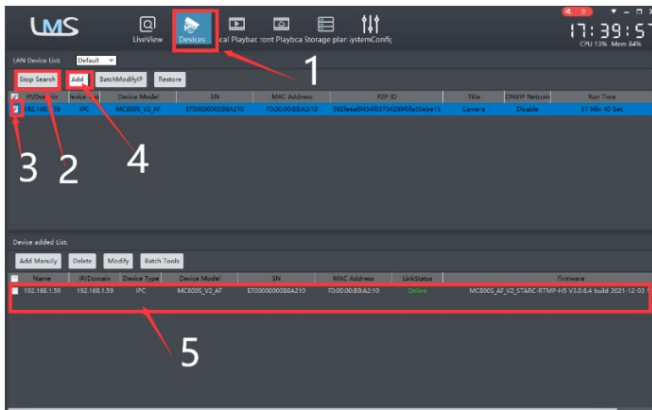
9

The software supports English, Simplified Chinese and Traditional Chinese (if you want to support other languages, we can provide you with language packs, you can translate into the language you want, and then we can provide you with software customization)

- Follow the prompts to complete the software installation
- Run the LMS software:user:admin,password:123456



Click LOGIN to log in to the software



10



11

4. Search and add cameras. Click “Devices>” Start Search”>click“3”>add >successfully added, as shown in figure 10.

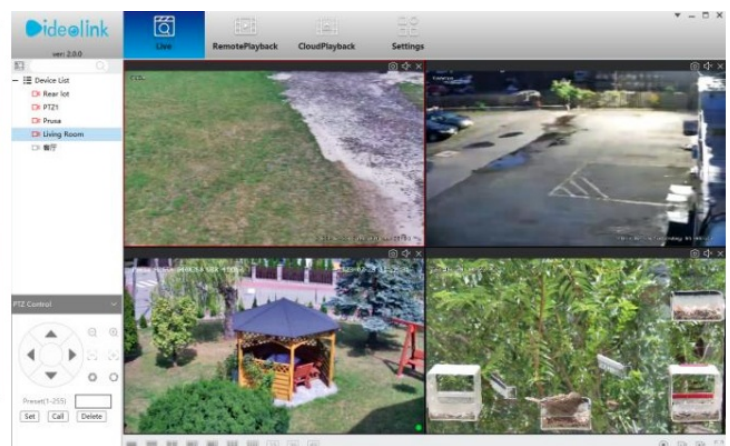
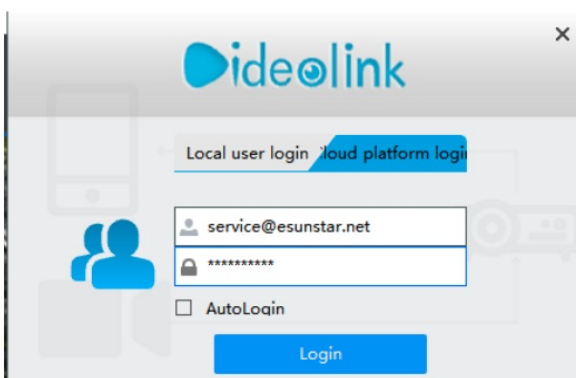


Then click” LiveView ” go to Liveview, as shown in the figure 11

Double click on the IP address and the video will automatically appear in the video box on the right.

Preview and control cameras with VIDEOLINK PC software

1. Double-click the VIDEOLINK software in the directory, follow the prompts to complete the installation of the camera, and then run the camera.
2. Run and login to VIDEOLINK,
The username and password here are the account you registered for the first time on your mobile phone.
3. Click login button go to VIDEOLINK
You will see all the cameras under your account, you can preview the cameras and view the video playback in this way



Camera PTZ Control Command-List


Function name	Explanation	Preset	Call	Set
Set return position	position of the camera return after the end of the tracking(set a tracking home position)	88		√
Turn On auto tracking	Turn On auto tracking (It is not recommended to turn on the tracking function for a long time.)	97	√	
Turn OFF auto tracking	Turn off auto tracking (default)	96	√	√
Set and open the Home position	Rotate the camera to the position you want, then Set 1th preset, and the 1th preset position is the Home position, When the camera is in standby, the camera will automatically rotate to 1th preset position 76+set+1+call Turn on Home position; 76+set+2+call for Turn off home position	76	√	
Turn On the ZOOM display	75+set	75		√
Turn Off the ZOOM display	75+call	75	√	
Restart PT speed	Restart only PT Speed dome (94+call)	94		√
Reset PT Speed	Reset only PT rotation control information to factory settings(82+call)	82	√	

All software and manual download weblink: <http://www.yucvision.com/videlink-Download.html>

Videlink camera software and manual download






Download the Videlink mobile APP:

IOS	Android	HarmonyOS
 Download on the App Store	 Download on the Google Play	 Download on the HarmonyOS
Download	Download	Download


Manual Download:

Manual name	Pictures	Language	Weblink
VideoLink mobile app Manual		English Russian Video Manual	Download Download Download
P2 series Camera Manual 4X ZOOM Auto tracking Speed Dome PTZ IP Camera		English Russian	Download Download
P02 series Camera Manual P06 series Camera Manual		English Russian	Download Download
P07 series Camera Manual		English Russian	Download Download
P05 series Camera Manual		English Russian	Download Download
P05 series Camera Manual		English Russian	Download Download

PC software Download:

Software Name	Pictures	Language	Weblink
Search Tool		English Russian	Download Download
LAN PC manage software Support Simplified Chinese, Traditional Chinese, English, Korean, Polish		English	Download
WAN PCmanage software Videolink P2P PC software		English	Download

Documents / Resources

	Videolink P2 IP Camera [pdf] User Manual P2 IP Camera, P2, IP Camera, Camera
---	---

References

- [Videolink download](#)
- [User Manual](#)