



# VIBE sound OPTIVWT5-V8 VW Transporter T5 2 Way Component Speakers Instruction Manual

[Home](#) » [Vibe sound](#) » VIBE sound OPTIVWT5-V8 VW Transporter T5 2 Way Component Speakers Instruction Manual 

## Contents

- 1 VIBE sound OPTIVWT5-V8 VW Transporter T5 2 Way Component Speakers
- 2 Introduction
- 3 Box Contents
- 4 Specifications
- 5 Tools Required
- 6 INSTALLATION
- 7 Replacing the Tweeter T6 A Pillar
- 8 T6 with factory fitted Tweeters
- 9 Warranty
- 10 What is not covered
- 11 Documents / Resources
  - 11.1 References
- 12 Related Posts



**VIBE sound OPTIVWT5-V8 VW Transporter T5 2 Way Component Speakers**



## Introduction

- Volkswagen Transporter T5 & T5.1 (2003-2015)
- Volkswagen Transporter T6 & (2015-2019)
- Volkswagen Transporter T6.1 (upto 2019) – 6.5" ONLY

This VIBE Optisound speaker kit has been specifically designed as a direct speaker and tweeter upgrade for the Volkswagen T5 & T5.1 & T6 & T6.1

Using super-efficient speaker technology combined with everything you need in one box, upgrading your speakers and getting a massive improvement in sound and performance couldn't be easier. The kit includes all installation parts required, plus additional sound enhancing components to give the best listening experience possible.

Using the 8" in your T5. Please note some T5 vehicle require the later larger T5.1 speaker adapter please check before installation which one you need

## Box Contents

- 2 x OPTI6C or OPTI8C Woofers
- 2 x Tweeters
- 2 x VW Speaker Adapter brackets
- 2 x VW Tweeter Adaptors Brackets
- 2 x VW Wiring Adapter Cables
- 2x VW Tweeter Connectors
- 2 x VIBE Wave diffuser  
6.5" version Only
- 2 x Anti VIBE sound deadening
- 2 x Silicone Speaker Baffles  
6.5" version Only
- 1 Pair Tweeter fittings

- 4 x T-Crimp Connectors

## **Specifications**

### **OPTI6C**

- Configuration – 2-way
- Speaker Size – 6.5" (165mm)
- Peak/RMS Power – 270W/90W
- Sensitivity – 94dB
- Frequency Response – 54Hz – 20kHz
- Impedance – 4Ω
- Mounting Depth – 2.4" (61mm)

### **OPTI8C**

- Configuration – 2-way
- Speaker Size – 8" (200mm)
- Peak/RMS Power – 270W/90W
- Sensitivity – 94dB
- Frequency Response – 54Hz – 25kHz
- Impedance – 4Ω

## **Tools Required**

- T25 Torx Screwdriver
- Trim Removal Tools (VIBE CLTRT-V7)
- T15 Socket & Ratchet
- Drill
- 5mm Drill Bit
- Pliers
- Wire Strippers
- Wire Crimpers

## **INSTALLATION**

### **Removing the Door Card**

1. To access the door speaker, first carefully remove the door card. This is secured with 6 x T25 Torx screws and plastic panel clips. Ensure all screws and clips are correctly removed and retained for re-installation
2. Using a trim removal tool, remove the plastic trim from the centre of the door handle then remove the two T25 Torx screws located behind. (We recommend using the VIBE CLTRT-V7 trim removal tools available from any

VIBE authorised dealer)



3. With the Torx screws removed, remove the handle completely from the door card.
4. Remove the single T25 Torx screw located in the centre of the door card



5. Remove the three T25 Torx screws located along the bottom edge of the door card. Once removed, use a trim

removal tool to carefully release the plastic clips securing the door card to the door

6. With the door card fully released from the door, unplug the window/door switches, and release the door opening cable. This is released by unclipping the front edge and sliding it back out of its locating channel. Once released, unhook the metal cable



7. Once the door card is removed fully, store safely to avoid damage.



### **Replacing the Door Speakers**

8. The factory speaker is secured to the door using rivets. To remove the speaker, drill out the rivets using a 5mm drill bit. Take care not to damage the vehicle and ensure protective eyewear is worn. Once all rivets are



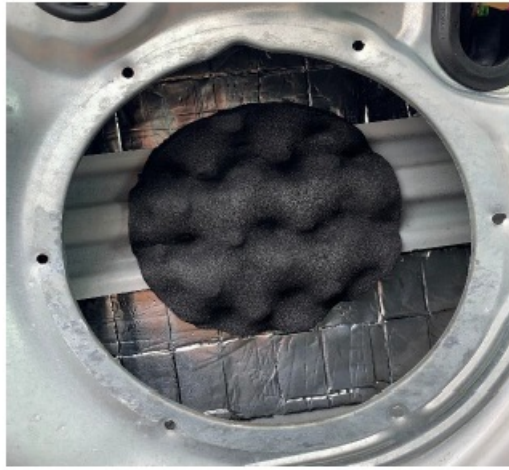
removed, unplug the speaker, and remove.

**Note:** Ensure the window is in the up position when drilling the rivets.

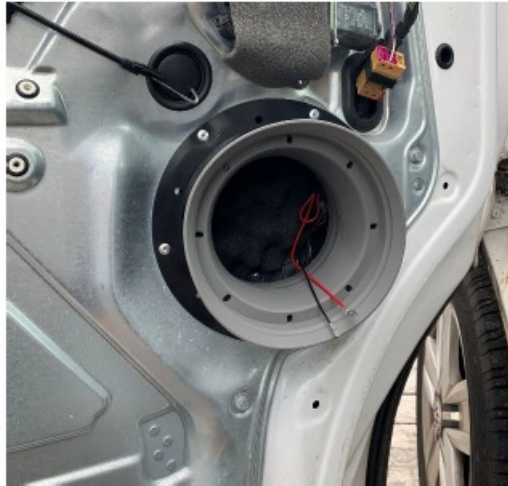
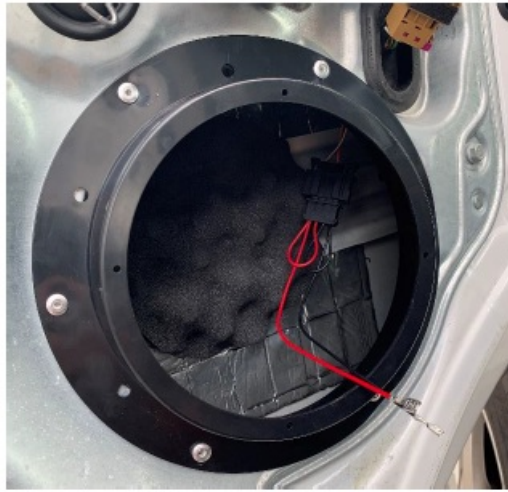
9. Ensure the door panel is clean and free from grease and dirt. Apply the self-adhesive sound deadening to the door panel directly behind the speaker as shown. For maximum coverage cut the sound deadening in half and place above and below the door strengthening bar



10. Affix the self-adhesive wave diffuser directly behind the speaker. Ensure its firmly secured as not to obstruct the window when open.
11. Fix the speaker bracket to the door panel by lining up the securing holes and using nuts & bolts or screw/rivets (not provided) to secure the mounting bracket to the door



12. Connect the speaker wiring adaptor and make a small hole in the rubber grommet. Pass the speaker wires through the grommet into the door cavity. Ensure the wiring is kept tight against to door skin as to not obstruct the window when lowered down
13. Insert the silicon baffle into the speaker adaptor and line up the securing holes. (6.5" version only)



14. Connect the speaker spade terminals to the woofer ensuring the polarity is correct (Red Positive +, Black Negative -) Line up the holes and silicone baffle and use the screws provided to secure to the speaker adaptor



Test the speaker and re-install the door card. Re-installation is a reversal of the removal process.

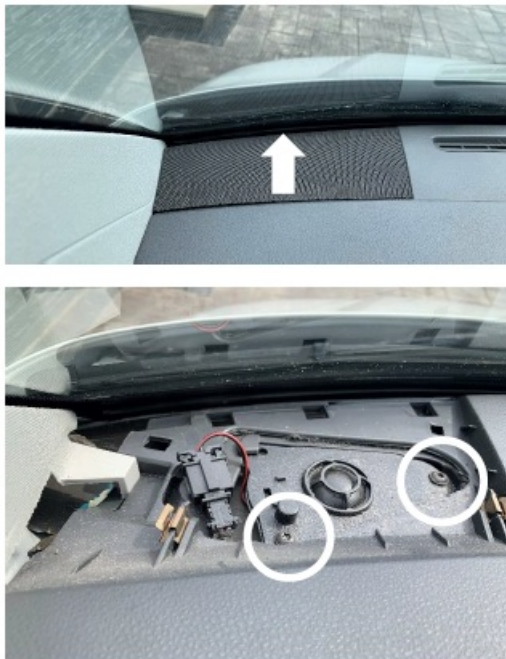
**NOTE Please** check the window does not catch the Speaker on the 8" kit when full down. If it does please add a 2 mm spacer or foam gasket to the back of the speaker. Extra Sound deadening included which can be fitted under the adaptor and speaker if need (8" version only)

#### **Replacing the Tweeter T5 kit Dash Board Placement**

15. To remove the factory tweeter (if fitted) first use a trim removal tool to remove the dash cover. Lift the front edge first and remove completely
16. Remove the tweeter (if fitted) by removing the two T15 Torx screws securing the tweeter mount to the dash and



unplugging the tweeter connector. Safely retain the mounting screws for reinstallation



17. Before fitting the new tweeters, please make sure the crossover or capacitor is used to protect the tweeter. (See Section 21 for details.)

Secure the OPT11C tweeter to the new tweeter mount using the metal locking ring provided.



#### **Vehicles WITHOUT factory fitted Tweeters**

18. For vehicles that are not fitted with factory tweeters in the dash, the OPT11C tweeter wires will need to be routed to behind the stereo. Connect the T Crimp connectors as shown to the Tweeter wires and clamp closed using pliers or similar.

Please make sure the included crossover is used. This can vary from the kit order from inline to separate yellow cap. This should be used on the positive cable.



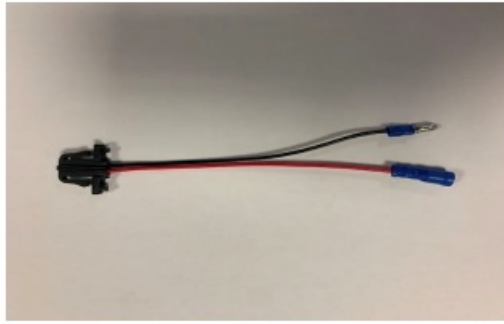
19. Connect the T-Crimp connectors to the stereo front speaker output wires. Take special care to ensure the polarity is correct so power correctly flows through the tweeter crossover. If unsure refer to your stereo user guide or wiring diagram. (Tweeter wiring, Black/White – Positive +, Black – Negative **Note:** Failure to complete this step correctly may result in damage to the tweeter)



#### **Vehicles WITH factory fitted Tweeters**

20. Add the bullet connectors provided to the tweeter connector provided taking note of the polarity. Red connects to the tweeter wire (black/white) and black connect to the tweeter wire (black)
21. Cut back the tweeter wiring ensuring the crossover/capacitor remains in-line with the positive wire (Black/White). Add the blue bullet connectors provided and connect to the tweeter connector. Ensure the Polarity is correct and connected as below
1. Tweeter Tweeter Connector
  2. Black/White to Red
  3. Black to Black

Note: Failure to complete this step correctly may result in damage to the tweeter

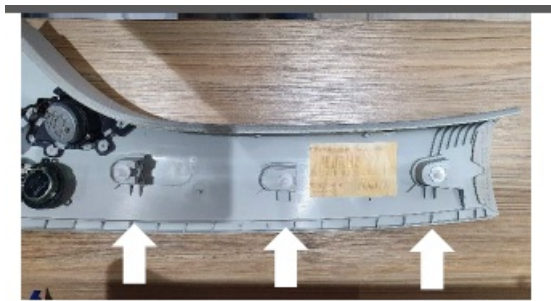


22. Reconnect the tweeter in the vehicle and secure the tweeter mount using the T15 screw previously removed.  
Test for correct operation and refit the dash cover



## Replacing the Tweeter T6 A Pillar

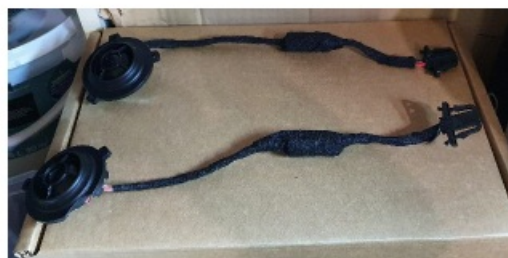
- 15B. To gain access the tweeter on the T6 the A pillar needs removing.
- A trim tool is recommended to remove these to avoid breaking anything.
- 16B. Once removed the Tweeter is now able to be removed. These are plastic welded into place from factory and can easily be removed with the use of heat and a small amount of pressure.
- Please refit in reverse. A glue gun may be needed at this point



## T6 with factory fitted Tweeters

17B. The tweeters are to be fitted into the original place and plug into the original position. These can be soldered and wrapped or use the supplied Bullet connectors. See point 20 and 21 for full details.

**Note:** Failure to complete this step correctly may result in damage to the tweeter which is not covered by warranty.



## Warranty

All VIBE products carry a full 12-month warranty, valid from the date of the original receipt and proof of purchase (UK only). The original receipt and packaging should be retained for the full 12-month period. If the product develops a problem at any stage during the warranty period, it should be returned to the point of purchase, complete and in its original packaging.

A full description of VIBE's warranty information can be found on our website

## What is not covered

- Damage to a product due to improper installation
- Subsequent damage to other components
- Damage caused by exposure to moisture, excessive heat, chemical cleaners and / or UV radiation
- Damage through negligence, misuse, accident, or abuse. Repeat returns for the same fault may be considered abuse
- Any cost or expense related to the removal and / or re-installation of the product
- Damage caused by amplifier clipping or distortion
- Items repaired or modified by any unauthorised repair facility
- Return shipping on non-defective items
- Products returned without a return's authorisation number
- Damage to product by sealant use.

### **International Warranty**

Contact your international VIBE dealer or distributor concerning specific procedure for your country's warranty policies. [www.vibeaudio.co.uk](http://www.vibeaudio.co.uk)



Tel: 0121 311 9090

Email: [info@midbass.co.uk](mailto:info@midbass.co.uk)

### **Additional Upgrade Options Available**

Want to upgrade your sound further...Why not amplify your speakers or add a subwoofer for a whole new listening experience. Please visit [www.vibeaudio.co.uk](http://www.vibeaudio.co.uk) for more information



**POWERBOX65.4M-V7**



- Super compact 4 channel amplifier
- 4 X 65 Watts RMS
- Simple plug & play installation
- No need to install separate power and speaker wires
- Plug in-line with an original or aftermarket stereo

#### **POWERBOX400.1M-V7**

- Ultra-compact 400 RMS / 800W Peak mono amplifier
- Simple installation using the Rapid Fit wiring kit (RAPAWK5M & RAPAWK2.5M)
- Can be used with the original or aftermarket stereo
- Perfectly matched to our compact subwoofer enclosures

#### **OPTISOUNDAUTO8-V2**



- Slimline 8" passive or active enclosure
- Ported enclosure technology
- Designed to fit the smallest of spaces
- Perfect for adding bass without compromising space

#### **OPTISOUNDAUTO8A-V2**



- Built in 300W RMS / 900W Peak Amplifier
- Amplifier wiring included

#### **PULSEC8-V0**

- Ultra-compact under seat enclosure
- compact and slimline design
- Cast aluminium housing
- 6×8 inch subwoofer
- 80W RMS / 240W Peak

## BLACKAIRT12S-V6



- Slimline 12" passive radiator subwoofer enclosure
- Ultra-slim profile
- Dual 4 Ohm voice coil config

1. [www.vibeaudio.co.uk](http://www.vibeaudio.co.uk)
2. [www.youtube.com/vibeaudio](http://www.youtube.com/vibeaudio)
3. [www.facebook.com/vibeaudio](http://www.facebook.com/vibeaudio)
4. [www.twitter.com/vibecaraudio](http://www.twitter.com/vibecaraudio)
5. [www.instagram.com/vibeaudio](http://www.instagram.com/vibeaudio)

## Documents / Resources

	<p><a href="#">VIBE sound OPTIVWT5-V8 VW Transporter T5 2 Way Component Speakers</a> [pdf] Instruction Manual</p> <p>OPTIVWT5-V8, OPTI8VWT5-V0, VW Transporter T5 2 Way Component Speakers, T5 2 Way Component Speakers, Component Speakers, OPTIVWT5-V8, Speakers</p>
--	--

## References

- ✓ [British Audio - Vibe](#)
- ✓ [British Audio - Vibe](#)