

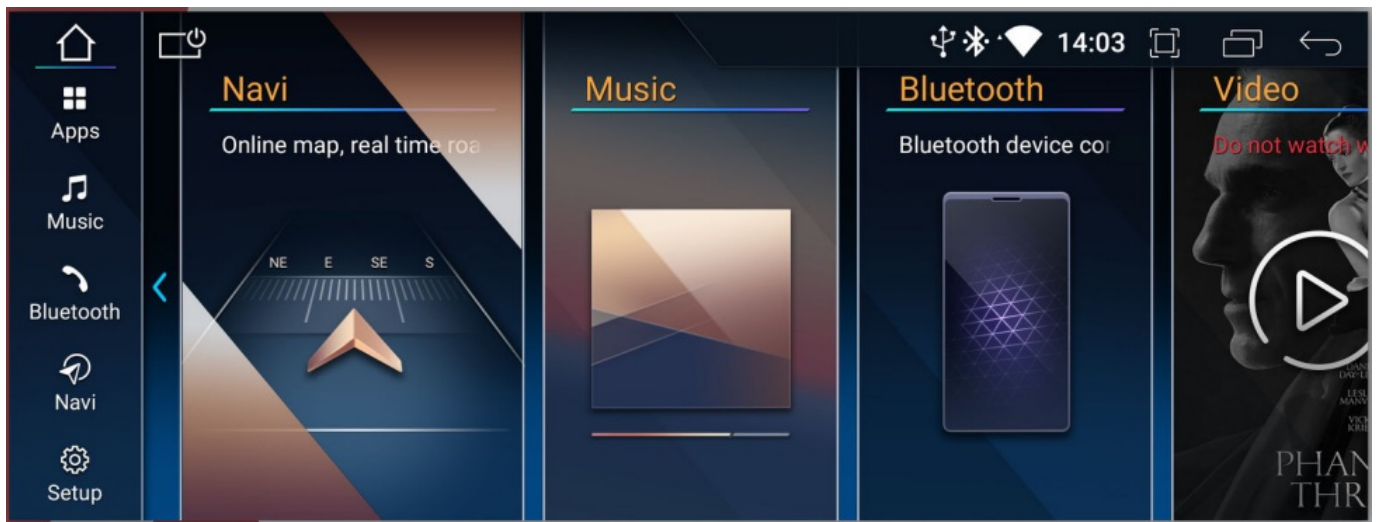


Contents [[hide](#)]

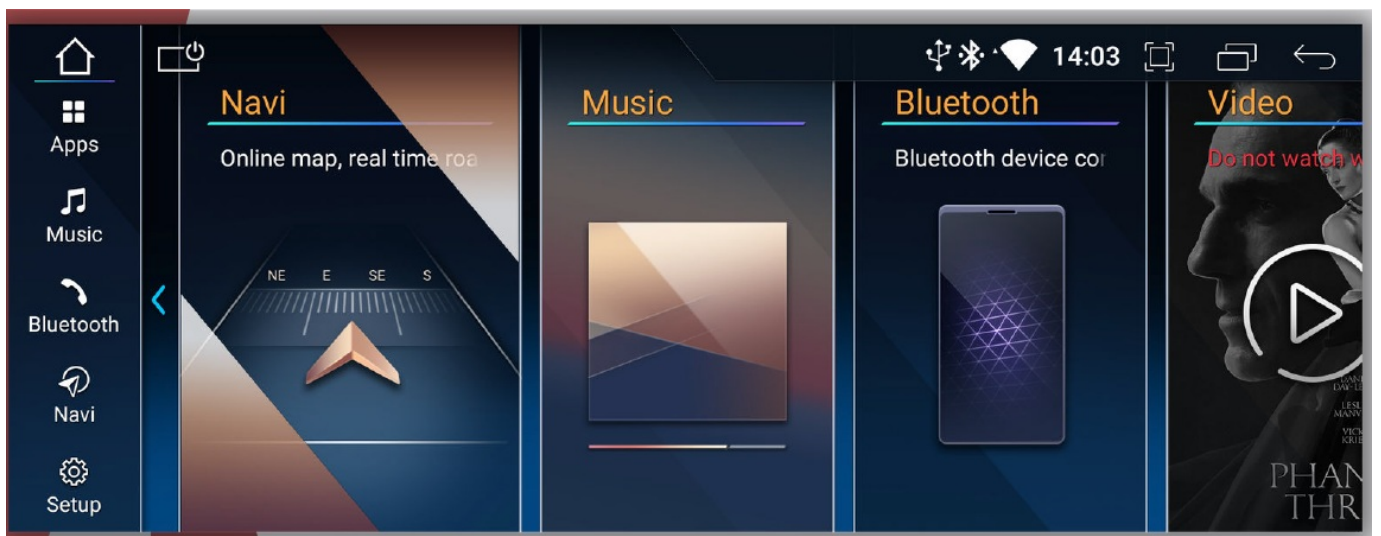
- [1 VHEDIA Q Series Firmware Update](#)
- [2 WHAT'S IN THE KIT](#)
- [3 WHAT'S IN THE KIT](#)
- [4 AFTERMARKET REVERSE CAMERA INSTALLATION](#)
- [5 HOW TO INSTALL](#)
- [6 WIRELESS APPLE CARPLAY](#)
- [7 IRED ANDROID AUTO](#)
- [8 MAIN USER INTERFACE](#)
- [9 CONNECTING TO WIFI](#)
- [10 DOWNLOADING APPS](#)
- [11 UPDATING APPS](#)
- [12 FORMATTING USB FLASH DRIVE](#)
- [13 EXTRACTING FIRMWARE FILE](#)
- [14 PERFORMING THE UPDATE](#)
- [15 Documents / Resources](#)
 - [15.1 References](#)



VHEDIA Q Series Firmware Update



BMW



VHEDIA Q-SERIES

VHEDIA Q-SERIES IS OUR BRAND NAME FOR OUR HEAD UNITS WITH Q-SERIES PROCESSOR IN THEM.

THE Q SERIES STANDS OUT FROM OUR X AND M SERIES BECAUSE OF ITS SPECIFIC COMPATIBILITY WITH BMW, AUDI, AND MERCEDES CARS.

PARTICULARLY ITS FUNCTION, THE Q SERIES GIVES YOU THE OPTION TO EITHER USE YOUR FACTORY SYSTEM OR THE ANDROID SYSTEM



NOTICE FOR USERS

THANK YOU FOR CHOOSING VHEDIA

- Please read carefully all the terms of this manual before using the unit. This manual will help you get started with using your head unit.
- Please keep this book in a safe place for future reference.
- The navigation features of this product (and the DVR, reversing camera option if purchased) are intended solely to aid you in the operation of your vehicle. It is not a substitute for your attentiveness, judgment, and care while driving.
- Our units are designed for DIY installation. If the customer decides to take to an auto electrician or a repairer then the cost of this will be at the expense of the customer. Vhedia will bear no responsibility for these expenses. In the event of a return for a faulty item. Vhedia will organise and pay for the return shipping costs and provide a replacement unit and help troubleshoot the issue. We will not cover the cost of a third

party doing troubleshooting or if they need to rework the replacement unit. Our friendly staff is here to help on our live chat or by phone Monday to Friday.

- The 3-year warranty policy may be invalidated if you do not comply with the manual and cause product failure. We disclaim any liability for any bodily injury or property damage that might result from any improper or unintended use.
- **WARNING**
- To ensure safety and obey the traffic rules, please do not watch videos and operate the unit while driving.
- Please keep this product away from liquids to avoid electric shock.
- If liquid or foreign object got inside the head unit, park your car in a safe place, turn the ignition switch off (ACC OFF) immediately, and consult your dealer. Do not use this product in this condition to avoid a fire, electric shock, or other failure. Please do not use the car audio for long time after turning off the engine or it will exhaust the battery.
- Please do not insert other objects into the vents or other openings of the head unit. (except for simcard ejector/paperclip in the RST pinhole needed ONLY when needed during troubleshooting).
- Please do not use sharp object to touch, rub or tap the screen. The head unit is applicable to vehicles with 12V power supply. Please do not install it directly on the vehicles with 24V to avoid product failure.
- Please turn off the car and disconnect ACC from B+ before installation to avoid a short circuit.



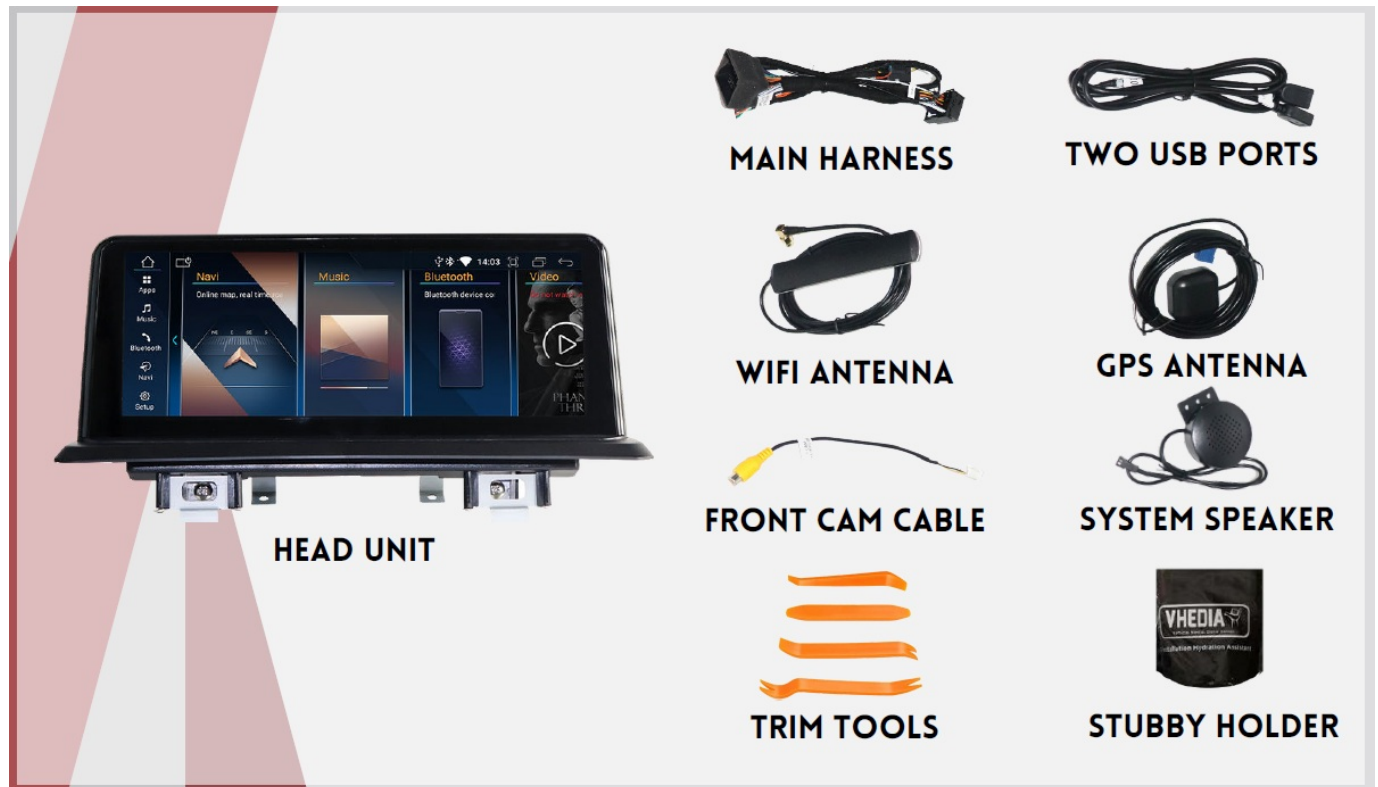
TECHY STUFF

- OPERATING SYSTEM
 - OS: Android 11
- PROCESSOR
 - MCU: Qualcomm MSM6125

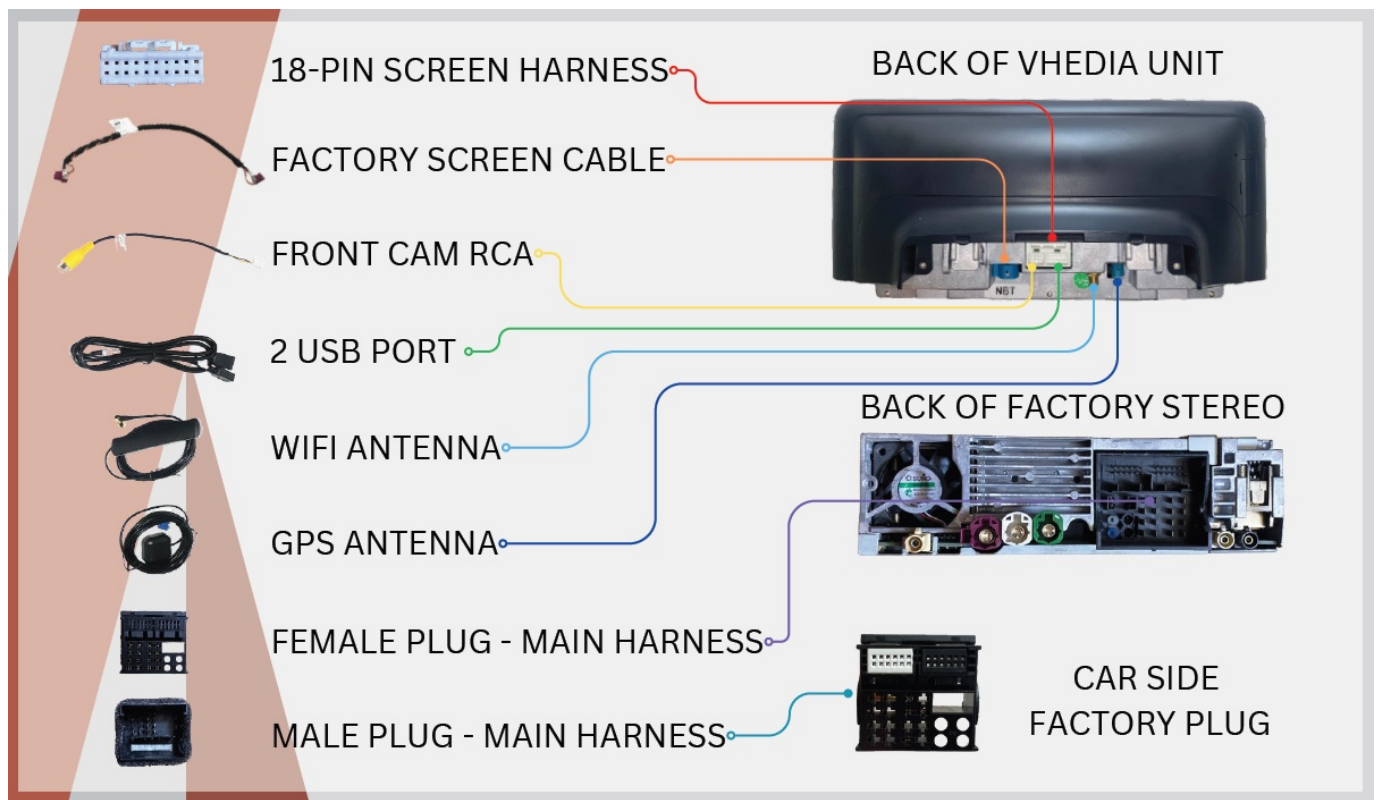
- CPU: Snapdragon 665, 4 Core A73 (2.0GHz) + 4 Core A53 (1.8GHz)
- MEMORY
 - RAM: 4GB
 - ROM: 64GB
- DISPLAY
 - Touch Screen: G+G Capacitive touch screen
 - Display Screen: IPS Screen (Blue Ray Anti-Glare: Optional)
 - Resolution:
 - 10.25"/12.3": 1920*720
 - 8"/9": 1280*480
- NAVIGATION
 - Satellite Search Positioning: GPS, Beidou, and Glonass
 - Navigation Maps: Google Map/IGO/Sygic/Waze/Yandex, etc.
- APPLICATION
 - Bluetooth: Bluetooth 5.0 for hands-free calls and music playback
 - Radio Module: NXP6686 module, supports RDS function
 - Phone Link: Supports wireless Carplay/Android Auto
 - Voice Control
 - Supports Google Play Store apps
- MULTIMEDIA
 - Sound Effect: Built-in DSP (16 bands of EQ), multiple sound effect adjustment
 - Audio Format: MP4, WMA, APE, FLAC, AAC, etc.
 - Video Format: MP4, AVI, MOV, RMVB, FLV, MKV, 3GP, MPG, etc. (Supports 4K@30fps video playback)
 - Image Format: JPG, JPEG, BMP, GIF, etc.
- NETWORK
 - Connecting: 4G/WiFi/Mobile phone hotspot
 - 4G Network Frequency:
 - LTE-FDD: B1/3/5/7/8/20/28
 - LTE-FDD: B38/40/41
 - WCDMA: B1/2/5/8
 - GSM: 850/900/1800/1900 MHz
 - WiFi Connecting: WiFi 2.4G+5G 802.11a/b/g/n/ac
- EXPANSION

- Input Signal: Supports 1080p cameras, AHD+CVBS Signal
- Video Output: USB to AV (optional)
- Reverse: Reversing and radar display
- USB: 2 ways USB 2.0
- **STANDBY MODE**
 - Boot: Supports quick start (reboot)

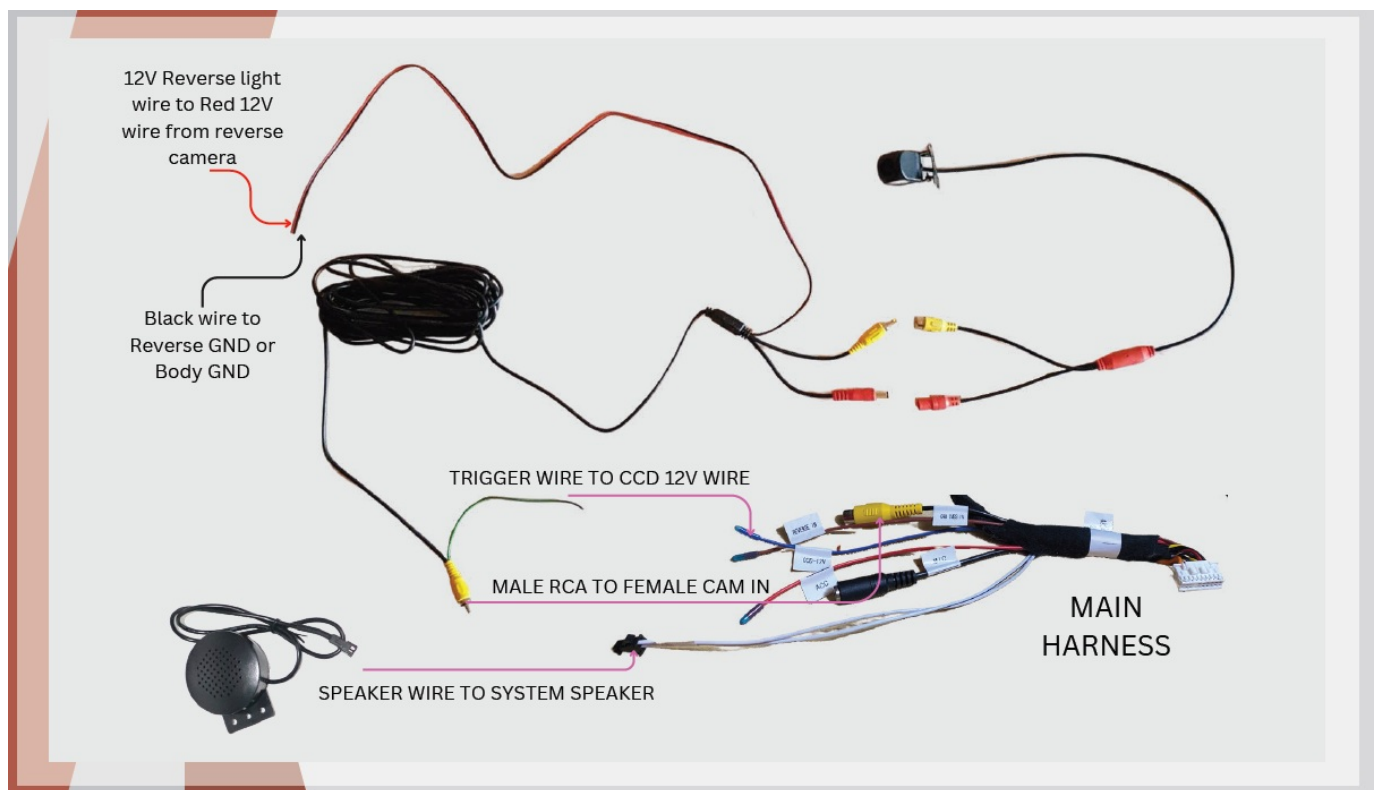
WHAT'S IN THE KIT



WHAT'S IN THE KIT



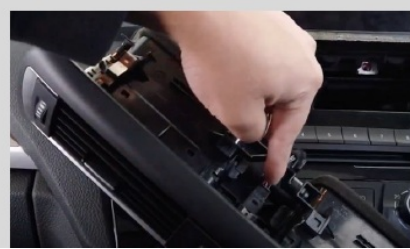
AFTERMARKET REVERSE CAMERA INSTALLATION



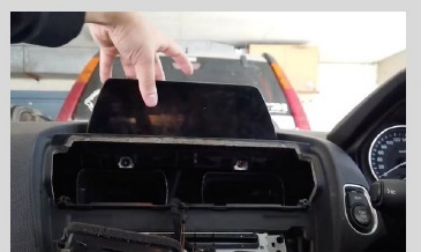
HOW TO INSTALL

NOTE: The BMW model on this instruction is for BMW 1 Series F20/F21 but steps are identical to other BMW models

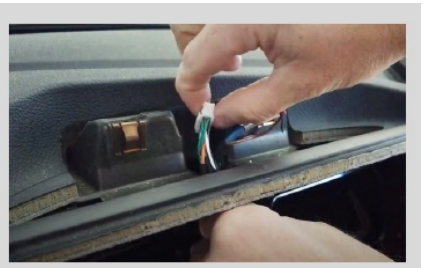
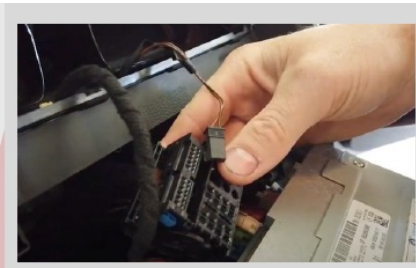
1. Remove the AC vents using your trim removal tool or by gently pulling carefully using your hands
2. Once removed, unplug the wires coming off the hazard switch and door button carefully
3. Remove the 4 screws that supports the old screen and radio/ac controls



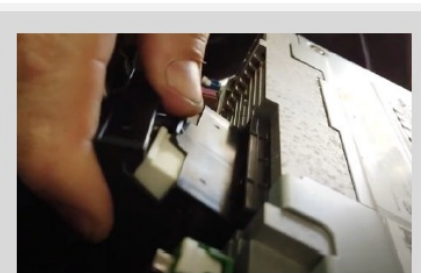
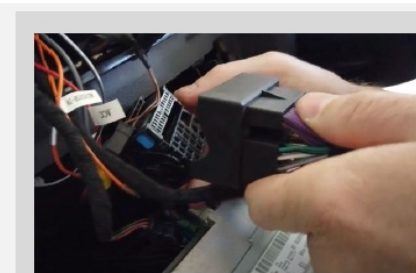
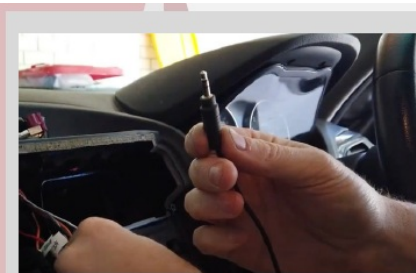
4. Once done, gently pull the radio and ac controls to expose the main unit
5. Carefully pull the old screen out of the dash



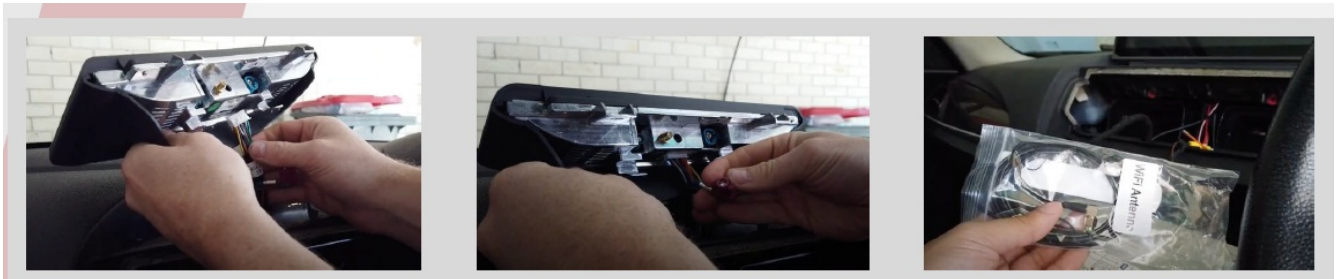
6. Pull the main head unit out and disconnect the plug from the back of the unit
7. Get your Vhedia main harness adapter kit and run the smaller plug on the hole in the dash where the screen mounts as this plug will connect to your new vhedia screen



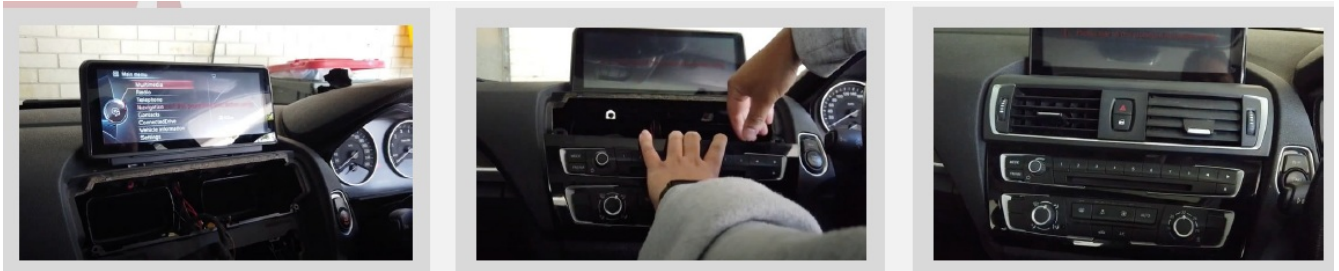
8. Plug the 3.5mm jack in the 3.5mm mic port from the vhedia harness
9. Connect the main plug from our harness to the car's main plug and the other end of our harness at the back of the original unit



10. Get your new Vhedia screen and connect the small plug from Step 7, the wifi antenna, the GPS, and the two USB ports all at the back of the new screen. The plugs will only go to where they fit

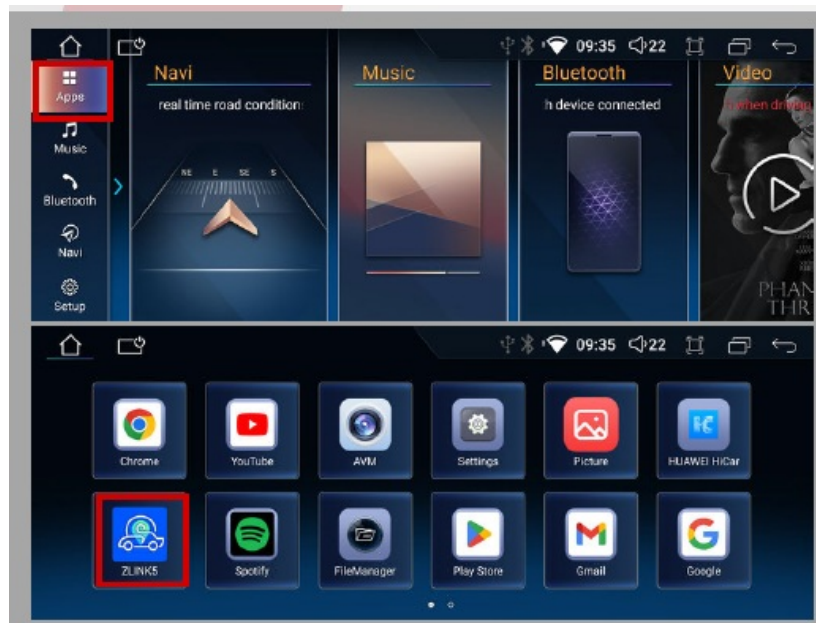


11. Mount the screen and turn on the car to test if the unit is working, along with speakers, reverse camera, iDrive, etc.
12. Place the radio/ac unit control panel back and put the screws back in
13. Connect the hazard and door switch and place the AC vents back in and you're done!



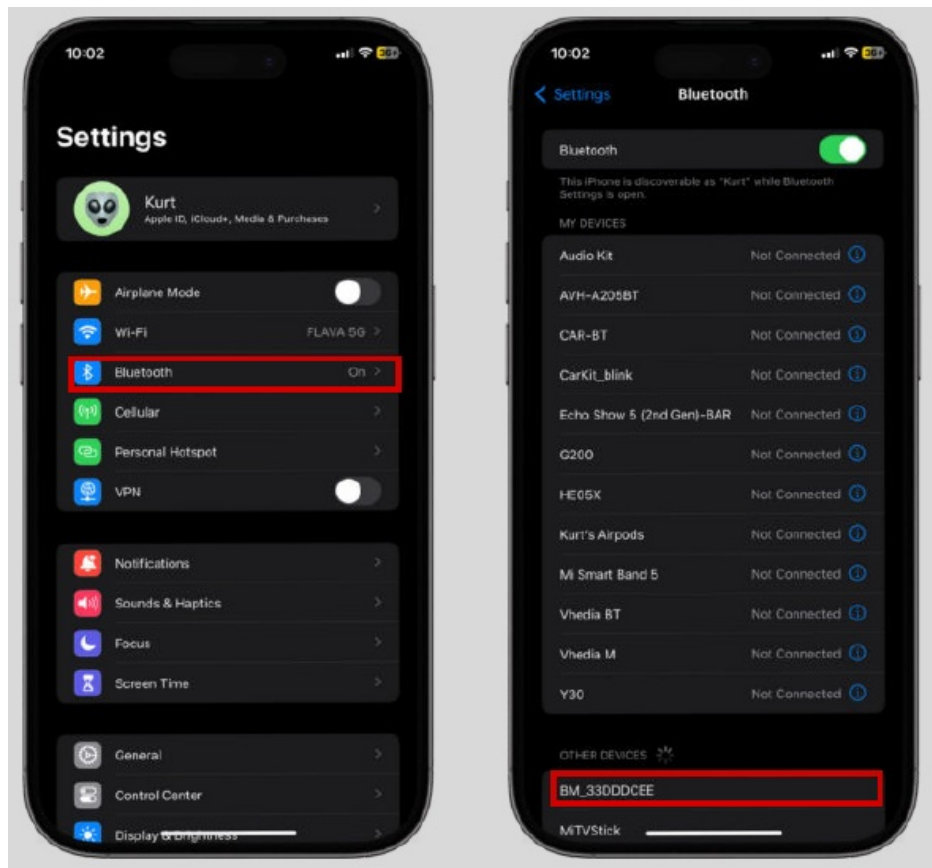
WIRELESS APPLE CARPLAY

1. Go to Apps > open ZLINK5

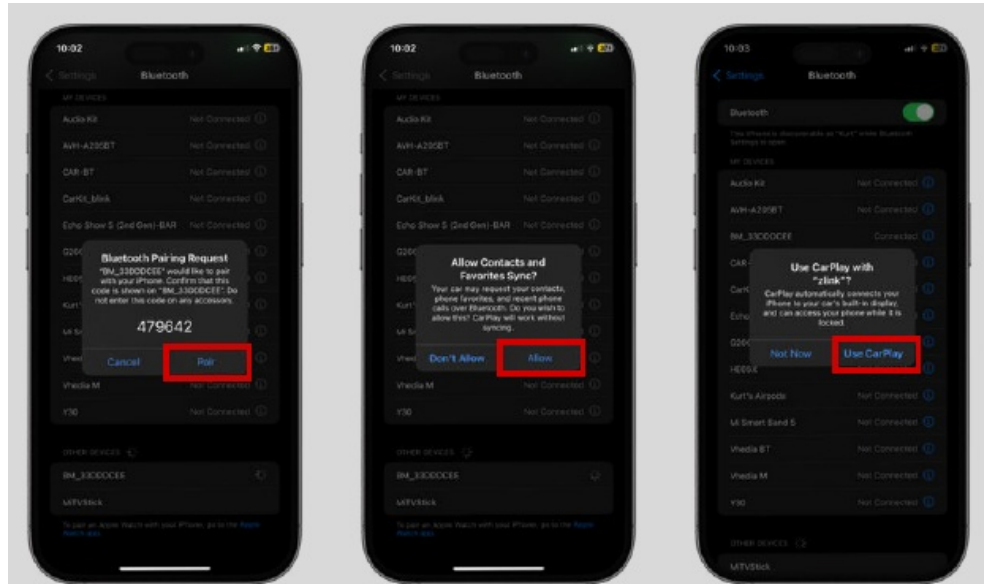


2. Check the Bluetooth Name





3. From your iPhone, Go to Settings > Bluetooth to ON
4. Under Other Devices, look for the head unit's BT Name and tap it to initiate the connection

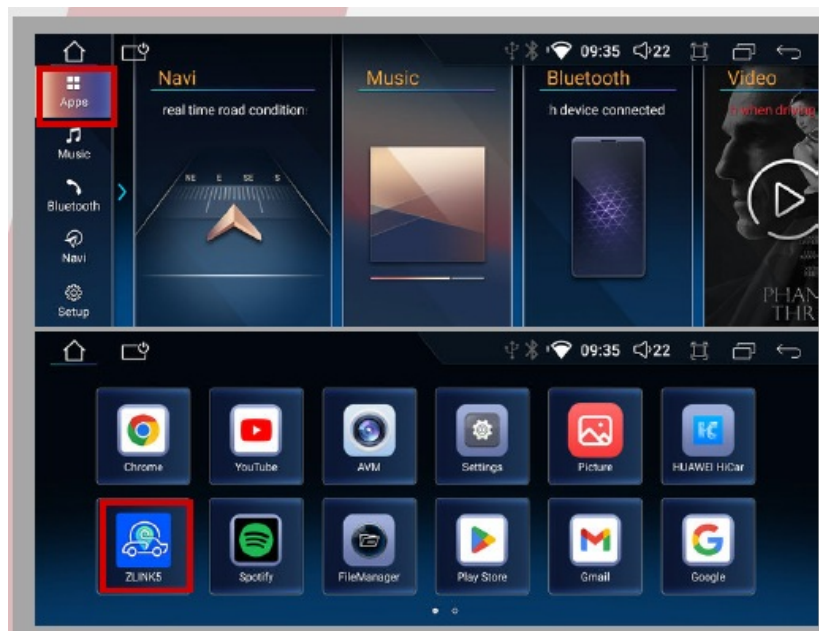


5. Select Pair on the Bluetooth Pairing Request pop-up
6. Select Allow on Allow Contacts and Favorites Sync pop-up so you can access your contacts and make a call/text through the head unit
7. Select Use CarPlay on Use CarPlay with "zlink" pop-up



WIRELESS ANDROID AUTO

1. Go to Apps > open ZLINK5
- 2.

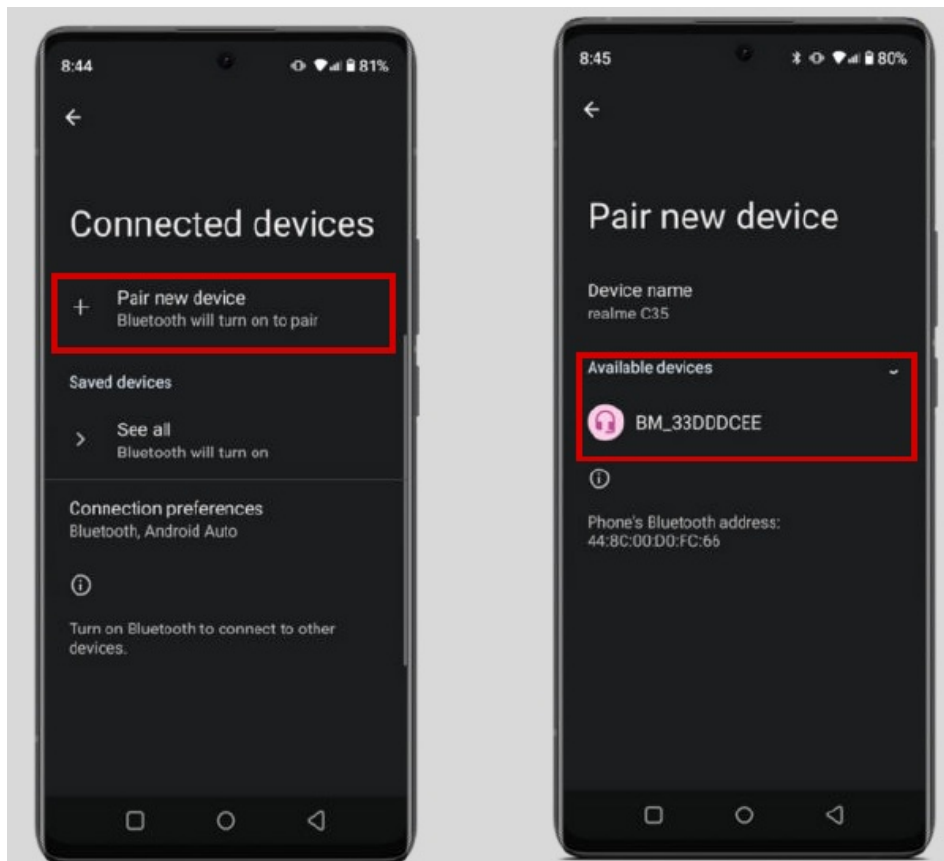


Check the Bluetooth Name

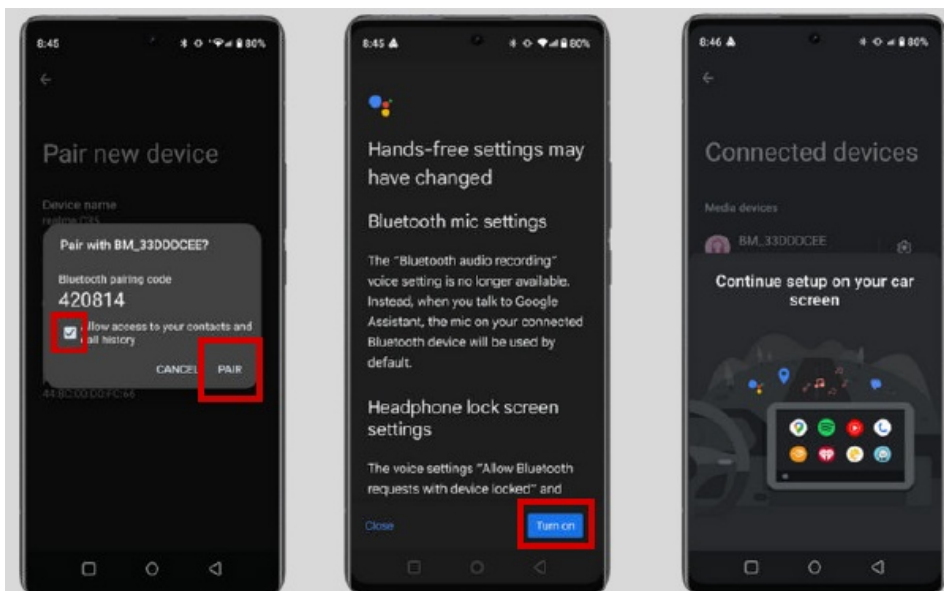


3. From your Android Phone, Go to Settings > Connected Devices.
4. Under Pair new device, look for the head unit's BT Name and tap it to initiate the

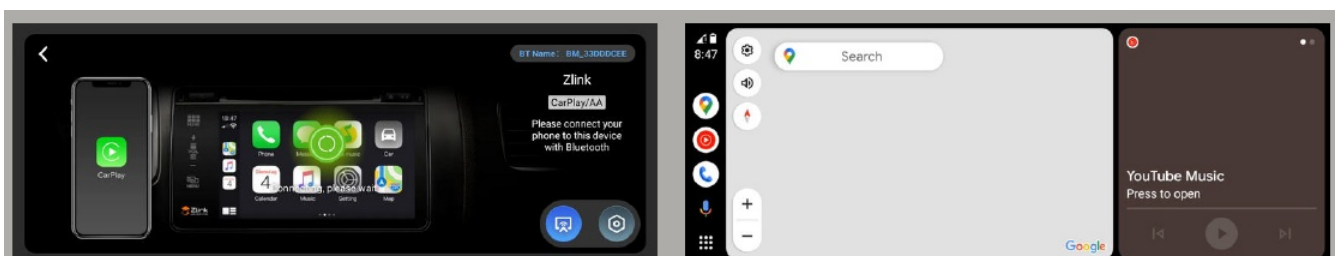
connection



5. Check Allow to your contacts and call history so you can access your contacts and make a call/text through the head unit
6. Tap Pair on the Bluetooth Pairing Request pop-up
7. Continue setting up Android auto through the head unit

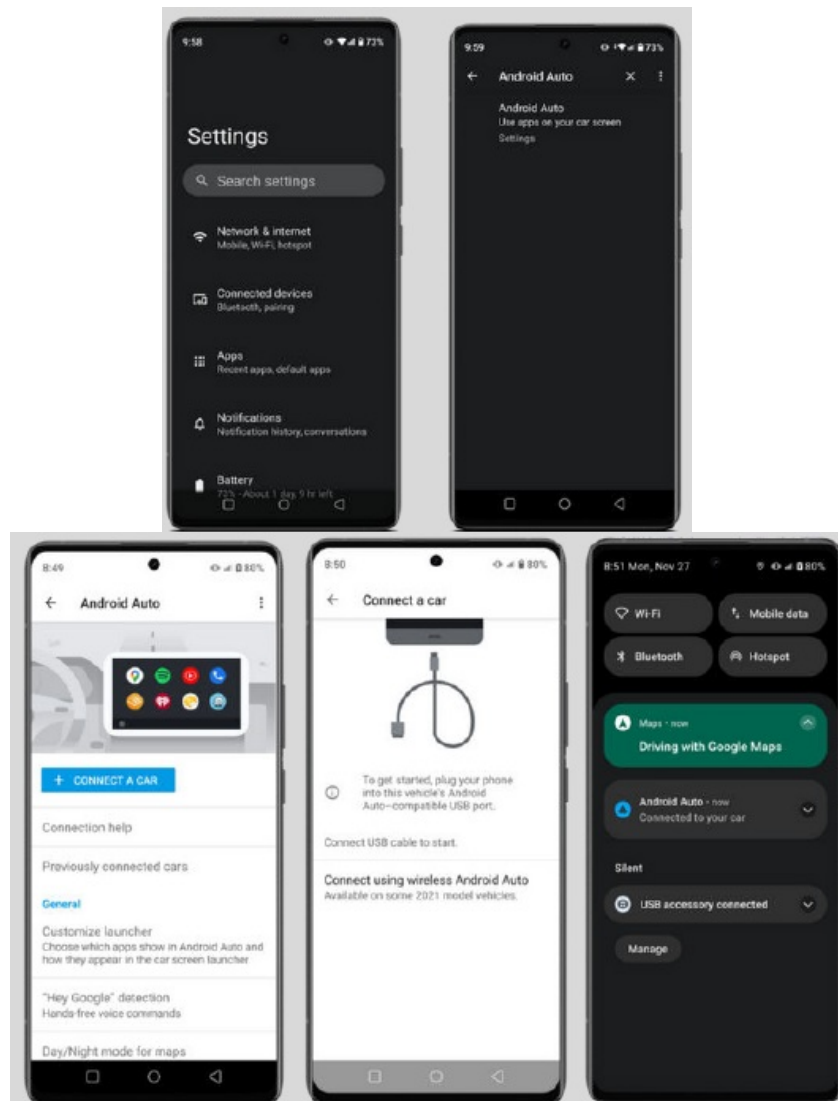


8. Wait for ZLINK to connect and you're done

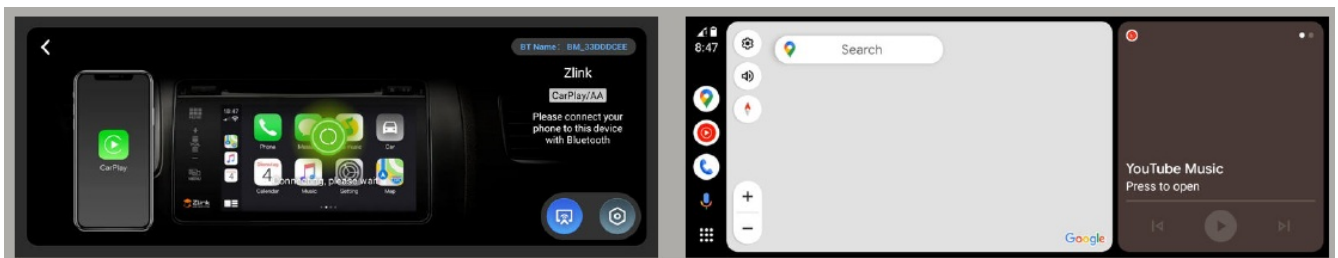


IRED ANDROID AUTO

1. Go to Settings
2. Search and Open Android Auto
3. Tap Connect a Car
4. Plug in your phone on the headunit's USB port via cable
5. You will see a notification on your phone that says "Android Auto: Connected to your car"



6. Wait for ZLINK to connect and you're done

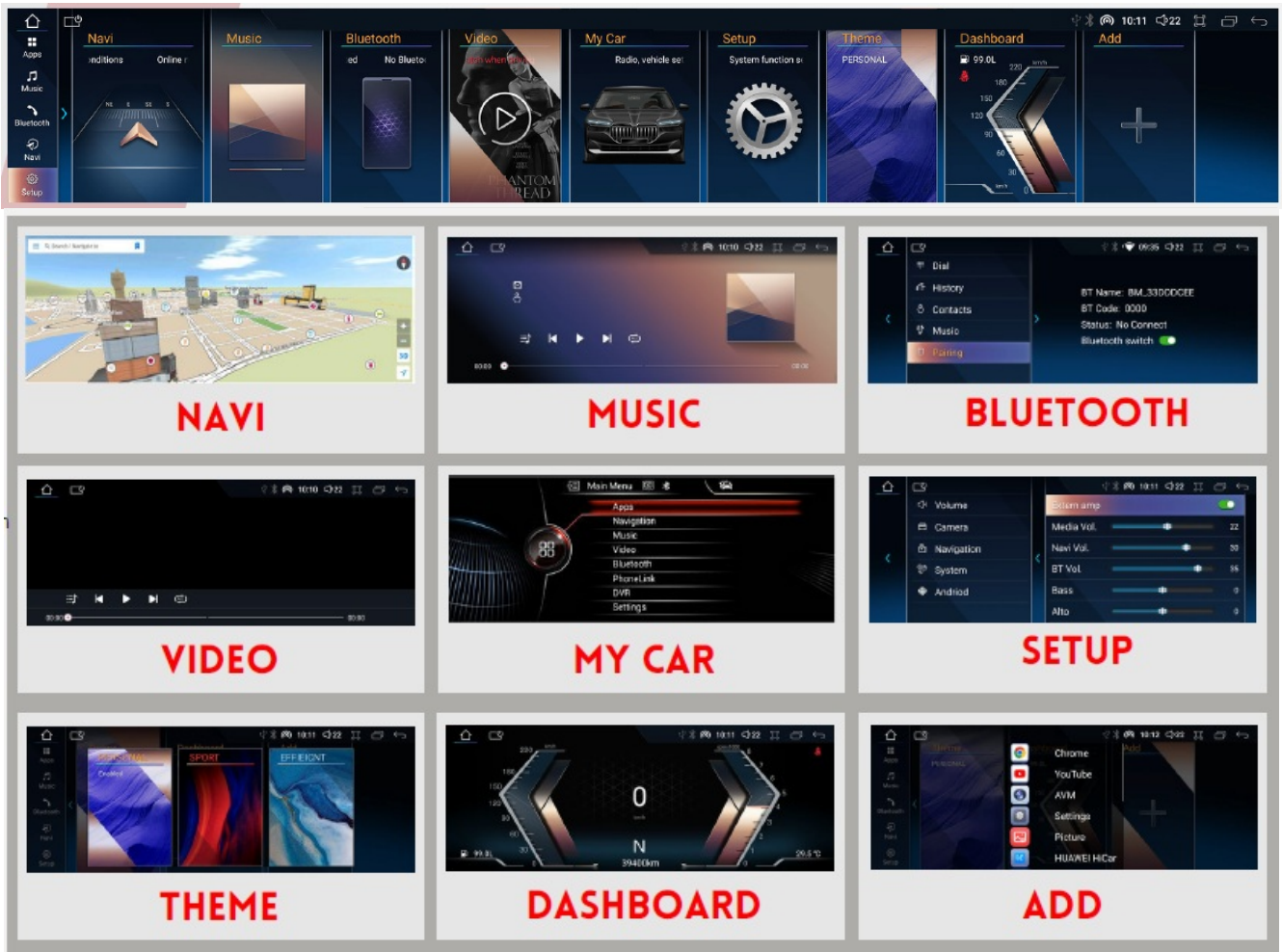


MAIN USER INTERFACE

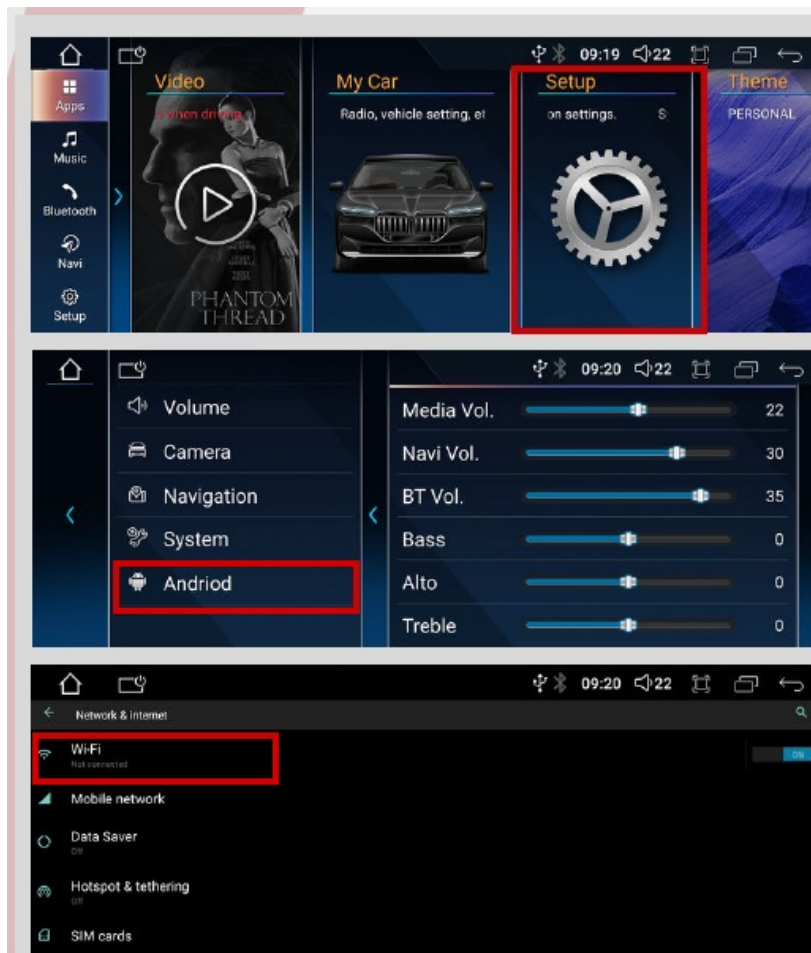
1. Navi – It opens the Navi App set as default on the head unit. To change the default,

go to Setup > Navigation > Select your preferred Navi app.

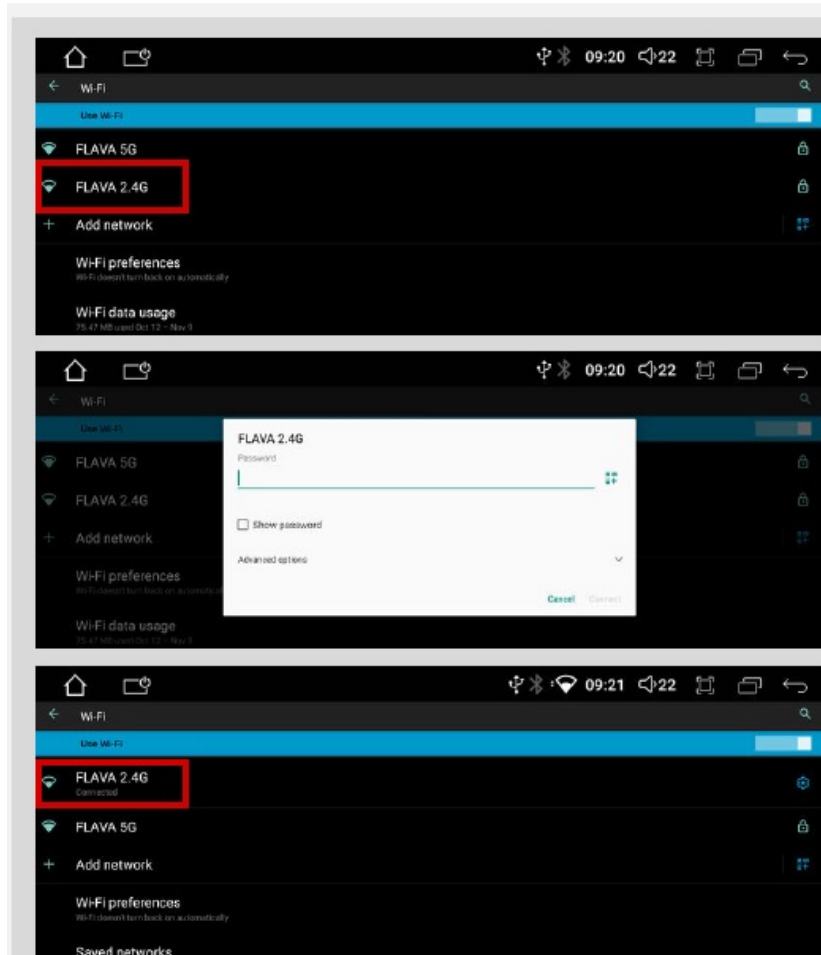
2. Music – Allows you to play music saved on your head unit or USB flash drive
3. Bluetooth – Opens the Bluetooth Interface where you can pair devices and make phone calls over Bluetooth.
4. Video – Allows you to play videos/movies saved on your head unit or USB flash drive.
5. My Car – This will open your original radio interface.
6. Setup – Basic settings for the head unit such as camera, navigation, car and android settings.
7. Theme – Allows you to change your main interface theme.
8. Dashboard – Will turn your screen into a virtual dashboard of your car.
9. Add – Allows you to add apps installed on your head unit to your main interface screen



CONNECTING TO WIFI



1. From main screen, go to Setup > Android. Go to Network and internet and tap Wi-fi



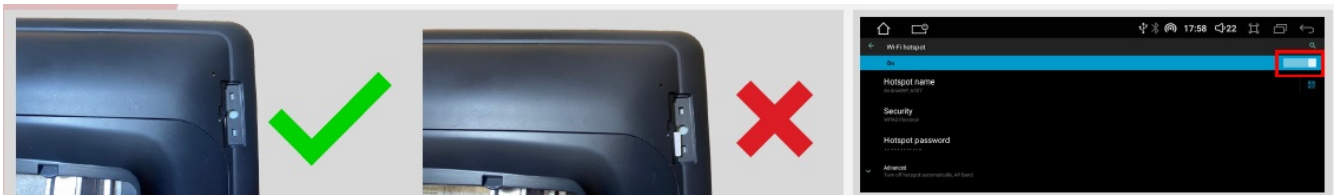
2. Select your Wi-fi Name > Type your password Correctly, tap Connect and you're done!

USING 4G SIM

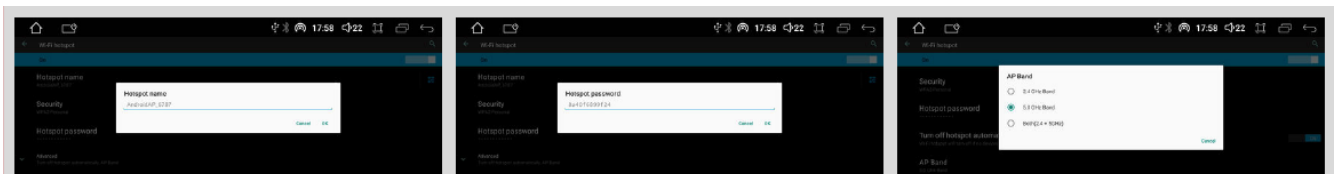
Your new BMW Vhedia screen upgrade has a sim card slot which will allow your head unit to have its own internet connection via Cellular Data.



1. Remove the simcard cover from the back of your vhedia screen
2. Insert your Micro sim facing this way until it clicks in



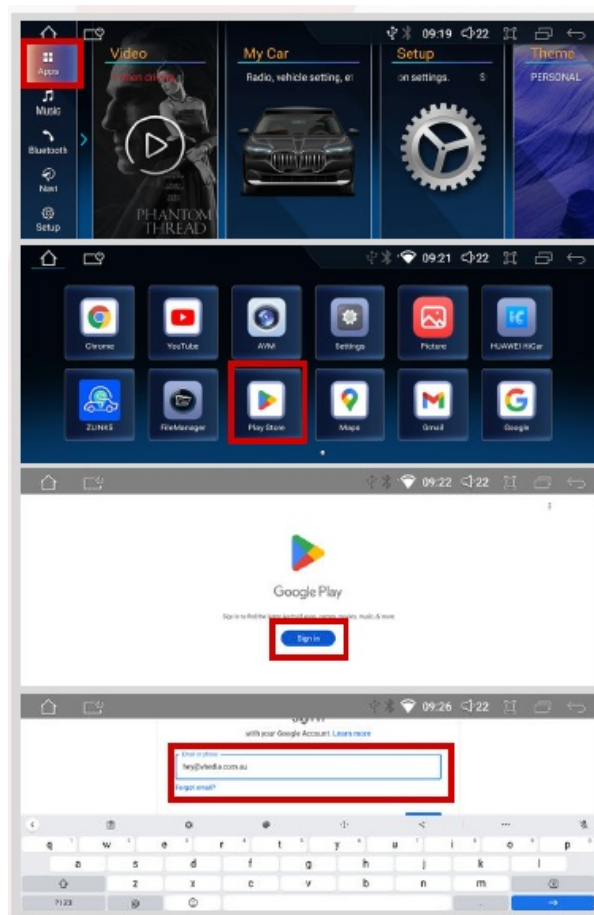
3. The sim card should sit all the way in and should not see any of its part showing and you're done. By using a sim card on the head unit, it gives your car ability to access the internet like a phone would using cellular data
4. To use the hotspot and share internet to other devices in your car, Go to Settings > Wifi and Internet > Hotspot and turn it on



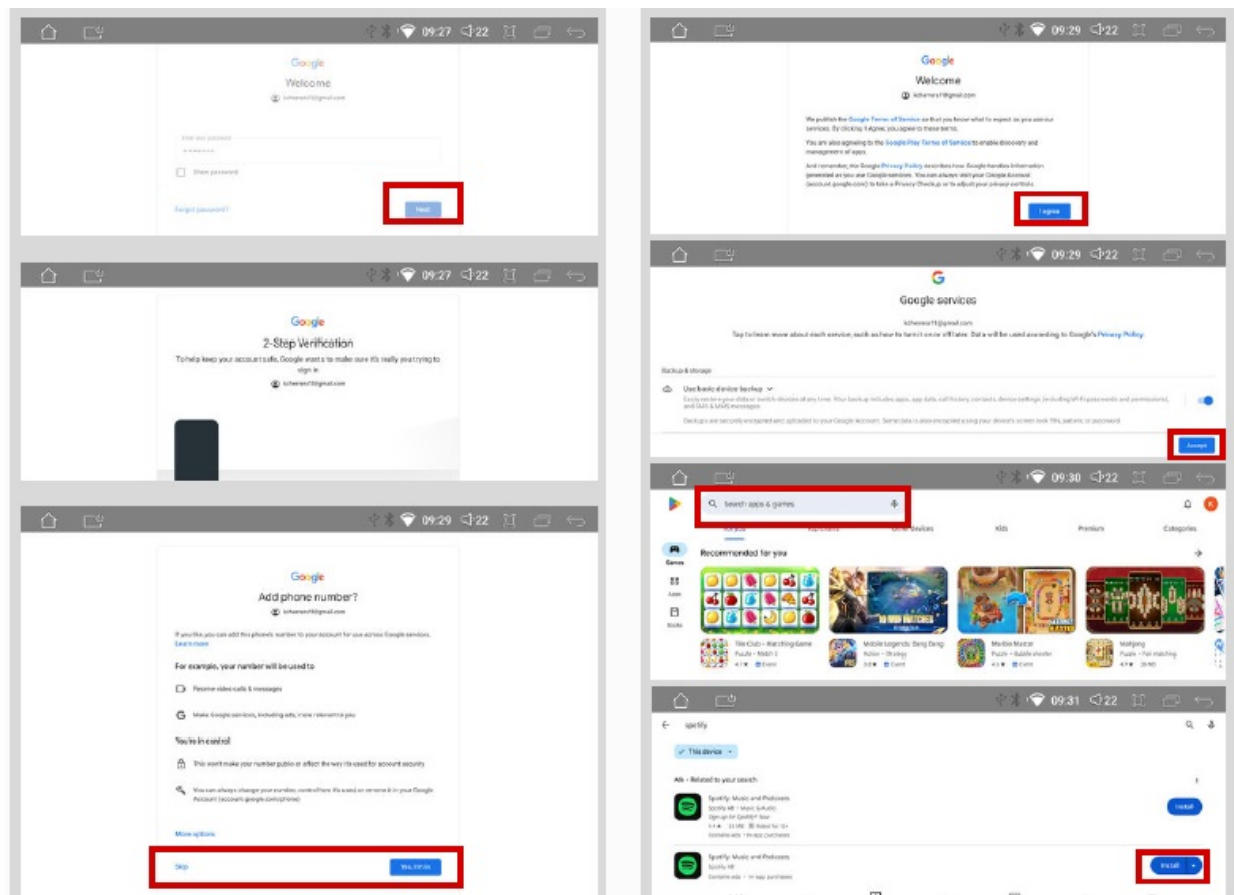
5. To change the hotspot name, simply tap on Hotspot name and type your desired hotspot name and tap OK
6. To change the hotspot password, simply tap on Hotspot password and type your desired password and tap OK
7. You can also select your preferred AP band by tapping on AP Band and selecting your preferred frequency

DOWNLOADING APPS

1. From main screen, go to Apps
2. Look for Play Store and Tap it
3. Google will ask you to sign in, tap Sign in
4. Enter your email address



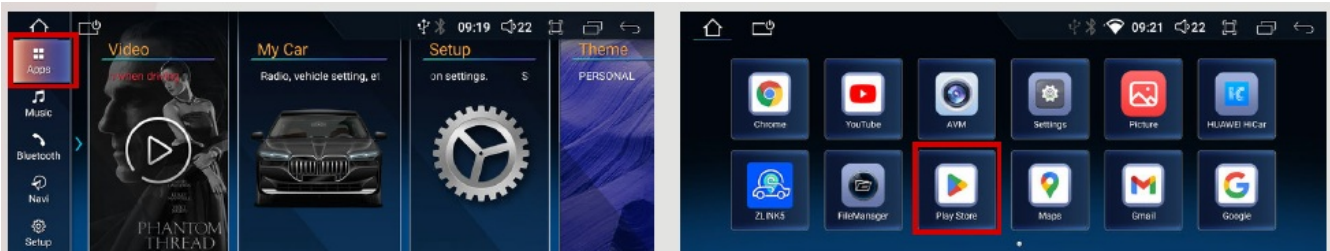
5. Enter your password and tap Next
6. Go through the 2-Step Verification
7. Swipe down and choose your preference for adding phone number in your Google account



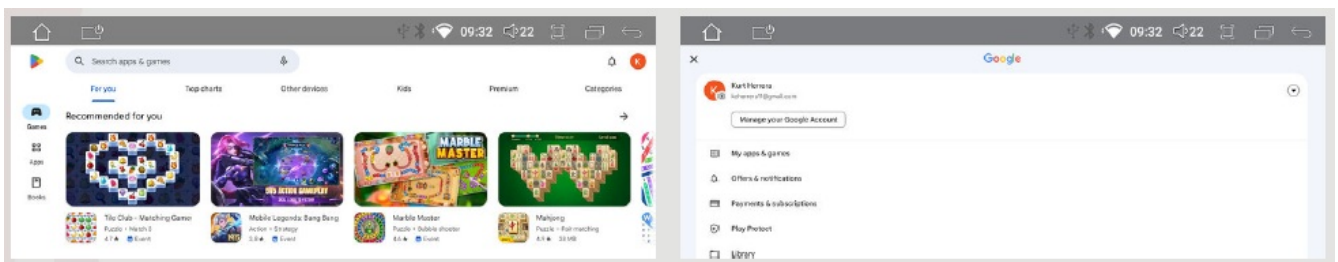
8. Read and Agree to Google's Terms of Service
9. Select your Google Services preference and tap Accept
10. Tap on the Search bar and Type the app you want to install and tap Search
11. Tap Install and wait for the download to finish

UPDATING APPS

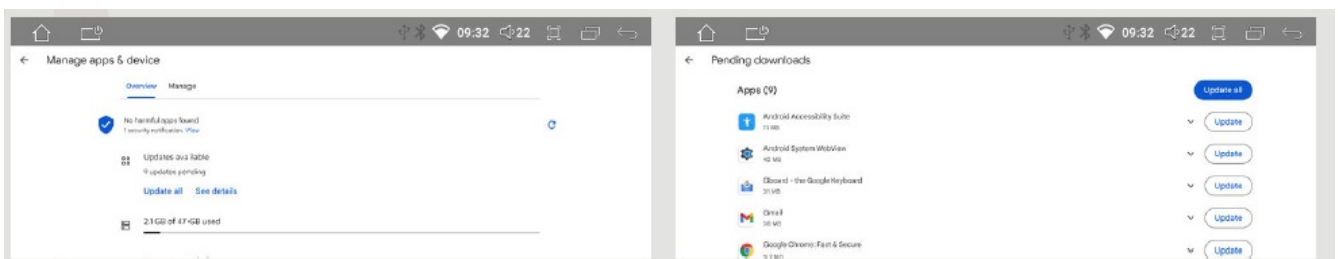
1. From main screen, go to Apps
2. Look for Play Store and Tap it



3. Tap your profile photo on top-right
4. Tap My apps & games



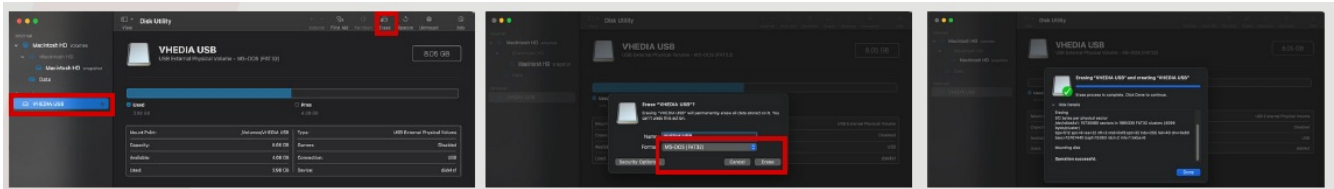
5. Tap "Update all" or "See Details" to view apps slated for update.
6. Under See Details, choose Update all or select which app you want to update



FORMATTING USB FLASH DRIVE

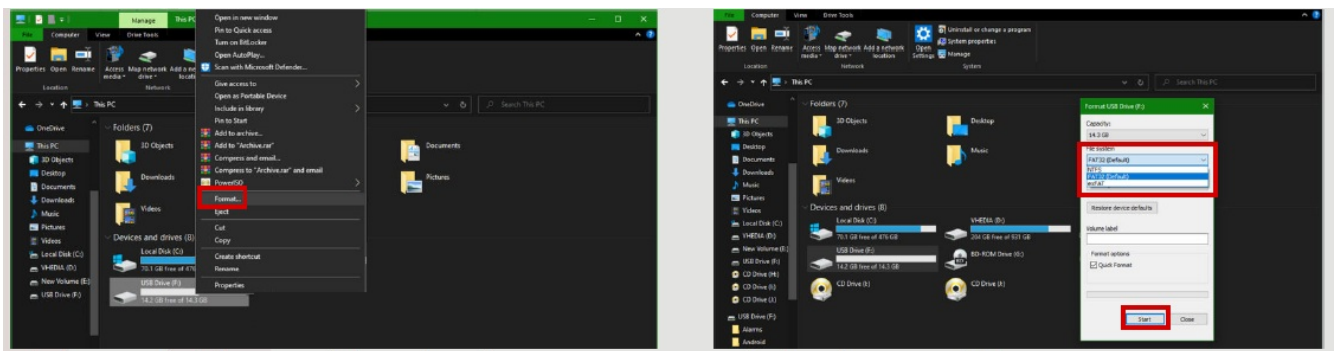
NOTE: Before doing a system update, it is required to format your USB flash drive to FAT32

1. Plug in your USB flash drive and open Disk Utility
2. Click on your USB's name and click Erase
3. Select MS-DOS (FAT32) as Format and click Erase
4. Wait for the flash drive to finish formatting and done.



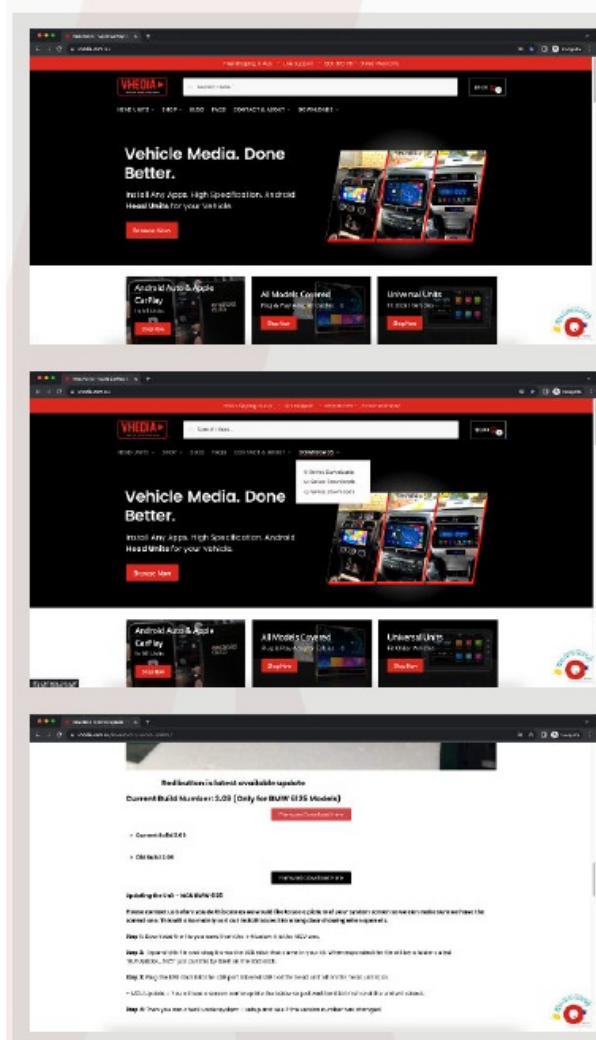
Format USB via Windows

1. Plug in your USB flash drive to your Windows and open Files
2. Right-click on your USB's name and click Format
3. Select (FAT32) as Format and click Start
4. Select FAT32(Default) as the File System and click Start. Wait for the flash drive to finish formatting and you're done.



DOWNLOADING FIRMWARE FILE

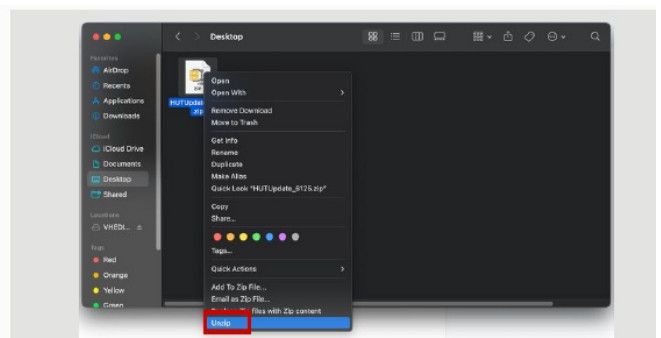
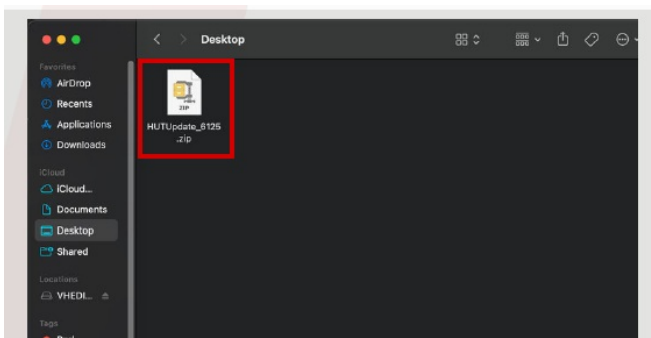
1. Head over to our website at <https://vhedia.com.au/>
2. Hover your mouse on DOWNLOADS tab and click on Q-Series Downloads
3. Scroll down and click the Red Download Firmware Now button



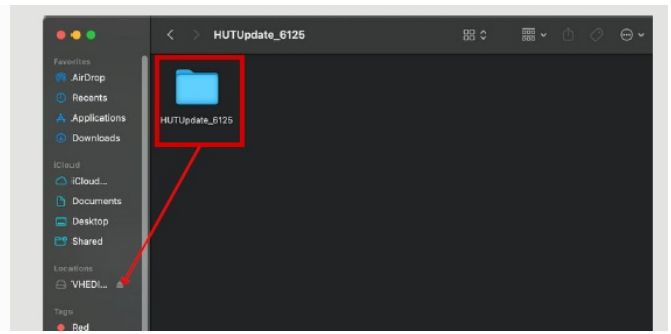
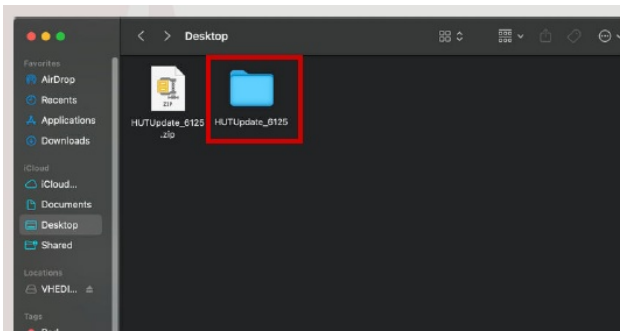
EXTRACTING FIRMWARE FILE

Mac

1. Locate the firmware zip file you downloaded
2. Right-click and select Unzip

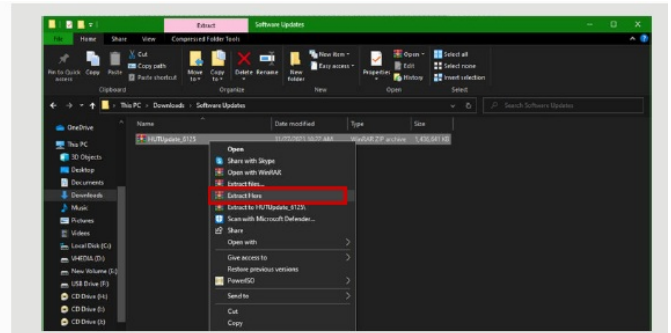
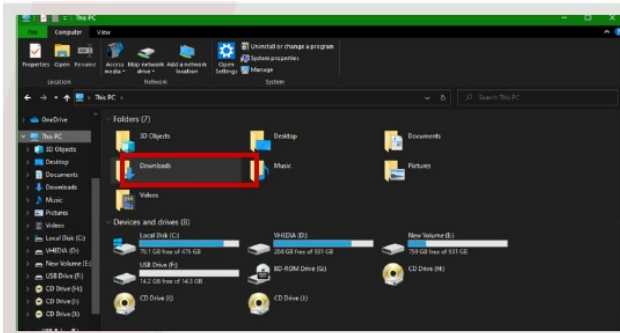


3. Open the extracted folder
4. Copy the whole folder inside the folder you just extracted to your USB flash drive

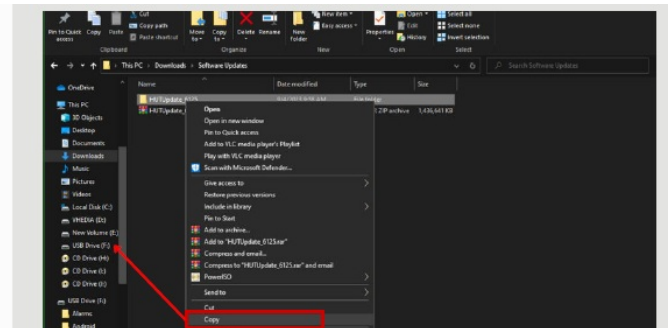
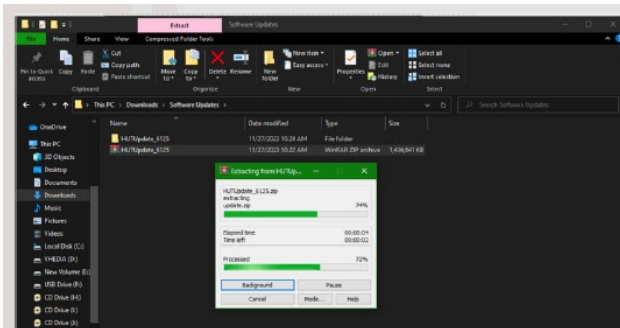


EXTRACTING FIRMWARE FILE

1. Open Files and go to Downloads folder
2. Locate the downloaded zip file and Right-click > Extract Here



3. Wait for the extraction to finish
4. Copy the folder you just extracted to your USB flash drive



PERFORMING THE UPDATE

1. Insert your flash drive with the firmware on one of the USB ports of the head unit
2. Wait for the USB to be recognised and the update will automatically start




3. Wait for the update to finish and the head unit will reboot

4. Confirm that the update is successful by going to Setup > System > and Version should show the same build number you downloaded






Documents / Resources

	VHEDIA Q Series Firmware Update [pdf] User Manual Q Series Firmware Update, Q Series, Firmware Update, Update
---	--

References

- [User Manual](#)

 Firmware Update, Q Series, Q Series Firmware Update, Update,
 VHEDIA  VHEDIA

Leave a comment

Your email address will not be published. Required fields are marked *

Comment *

Name

Email

Website

☐ Save my name, email, and website in this browser for the next time I comment.

Post Comment

Search:

e.g. whirlpool wrf535swhz

Search

[Manuals+](#) | [Upload](#) | [Deep Search](#) | [Privacy Policy](#) | [@manuals.plus](#) | [YouTube](#)

This website is an independent publication and is neither affiliated with nor endorsed by any of the trademark owners. The "Bluetooth®" word mark and logos are registered trademarks owned by Bluetooth SIG, Inc. The "Wi-Fi®" word mark and logos are registered trademarks owned by the Wi-Fi Alliance. Any use of these marks on this website does not imply any affiliation with or endorsement.