



VEVOR WS-USR-D Smart Dimmer Switch Instruction Manual

[Home](#) » [VEVOR](#) » VEVOR WS-USR-D Smart Dimmer Switch Instruction Manual 

VEVOR®

TOUGH TOOLS, HALF PRICE

Technical Support and

E-Warranty Certificate

www.vevor.com/support

SMART DIMMER SWITCH

MODEL:WS-USR-D

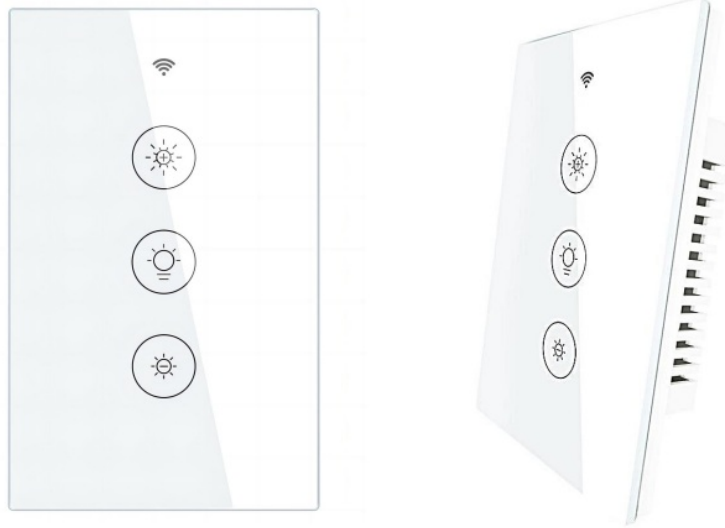
Contents

- [1 WS-USR-D Smart Dimmer Switch](#)
- [2 PRODUCT DESCRIPTION](#)
- [3 SAFETY INFORMATION](#)
- [4 INSTALLATION](#)
- [5 ADD DEVICES](#)
- [6 Enter Smart Life Skill in Alexa APP](#)
- [7 HOW TO CONNECT SMART DEVICE TO GOOGLE HOME](#)
- [8 LIST OF ACCESSORIES](#)
- [9 SERVICE](#)
- [10 RECYCLING INFORMATION](#)
- [11 Documents / Resources](#)
 - [11.1 References](#)

WS-USR-D Smart Dimmer Switch

We continue to be committed to provide you tools with competitive price.



“Save Half”, “Half Price” or any other similar expressions used by us only represents an estimate of savings you might benefit from buying certain tools with us compared to the major top brands and does not necessarily mean to cover all categories of tools offered by us. You are kindly reminded to verify carefully when you are placing an order with us if you are actually saving half in comparison with the top major brands.



NEED HELP? CONTACT US!

Have product questions? Need technical support? Please feel free to contact us:
 Technical Support and E-Warranty Certificate www.vevor.com/support

This is the original instruction, please read all manual instructions carefully before operating. VEVOR reserves a clear interpretation of our user manual. The appearance of the product shall be subject to the product you received. Please forgive us that we won't inform you again if there are any technology or software updates on our product.

	<p>Warning-To reduce the risk of injury, user must read instructions manual carefully.</p>
	<p>This product is subject to the provision of European Directive 2012/19/EC. The symbol showing a wheeled bin crossed through indicates that the product requires separate refuse collection in the European Union. This applies to the product and all accessories marked with this symbol. Products marked as such may not be discarded with normal domestic waste, but must be taken to a collection point for recycling electrical and electronic devices</p>

FCC compliance information statement

This equipment has been tested and found to comply with the limits for a Class B digital device, pursuant to part 15 of the FCC Rules. These limits are designed to provide reasonable protection against harmful interference in a residential installation. This equipment generates, uses and can radiate radio frequency energy and, if not installed and used in accordance with the instructions, may cause harmful interference to radio communications. However, there is no guarantee that interference will not occur in a particular installation. If this equipment does cause harmful interference to radio or television reception, which can be determined by turning the equipment off and on, the user is encouraged to try to correct the interference by one or more of the following measures:

- Increase the separation between the equipment and receiver.
- Connect the equipment into an outlet on a circuit different from that to which the receiver is connected.
- Consult the dealer or an experienced radio/ TV technician for help. This device complies with part 15 of the FCC Rules.

Operation is subject to the following two conditions:

1. This device may not cause harmful interference.
2. This device must accept any interference received, including interference that may cause undesired operation.

Any changes or modifications not expressly approved by the party responsible for compliance could void the user's authority to operate the equipment.

Note: The manufacturer is not responsible for any radio or TV interference caused by unauthorized modifications to this equipment. Such modifications could void the user's authority to operate the equipment.

FCC RF Radiation Exposure Statement This equipment complies with FCC RF radiation exposure limits set forth for an uncontrolled environment. This device and its antenna must not be co-located or operating in conjunction with any other antenna or transmitter. "To comply with FCC RF exposure compliance requirements, this grant is applicable to only Mobile Configurations. The antennas used for this transmitter must be installed to provide a separation distance of at least 20 cm from all persons and must not be co-located or operating in conjunction with any other antenna or transmitter." We, Sanven Corporation, has determined that the equipment shown as above has been shown to comply with the applicable technical standards, FCC part 15. There is no unauthorized change is made in the equipment and the equipment is properly maintained and operated.

PRODUCT DESCRIPTION

Thank you very much for choosing this product. Please read all instructions before use. This information will help you achieve the best results.

This new designed glass panel wireless touch smart switch is designed with WiFi+RF to replace traditional switches with a variety of ways to control. Now one new smart feature as new easier pairing method with Bluetooth supported is added into the Smart Life/Tuya App, together with the backlight on/off and relay status. And its scratch resistance glass panel is suitable for different decoration styles with its best value. Note: Button sound on and off: no button operations before operations begin within 6 seconds. Then press switch button for 4 times and long press for the fourth time (20s) until the switch beep sounds as Di-Di for 2 times for successful operation.

SAFETY INFORMATION

Risk of Electric Shock: Electricity can cause personal injury and property damage if handled improperly. If you are not sure about any part of these instructions, please seek professional assistance from a qualified electrician
Technical Parameters:

Model: WS-USR-D Working

voltage: 100-250V AC, 50Hz/60Hz

Max. total current: 2A

Max. Load Power: 220W(110V)

Wireless type: WIFI 2.4G+RF 433MHz

Working temperature: 0°C~40°C

Support system: Android/iOS

Warnings: Turn off the power at the circuit breaker and test that power is off before wiring.

INSTALLATION

Note:

- Make sure that the power at the circuit breaker is off before wiring.
- Neutral Wire is required. Confirm the wall box contains a Neutral Wire (typically white). If the wall box don't have a Neutral Wire, please try another location at your home or call a professional electrician to install the switch.
- The wire colors indicated in this manual are the usual colors and may differ in some houses.
- Ensure the wire conductors are securely fastened to each wire.
- Ensure the Wi-Fi signal is steady and normally working before wiring.
- If you don't have any wiring experience, please call a professional electrician.

Step 1:

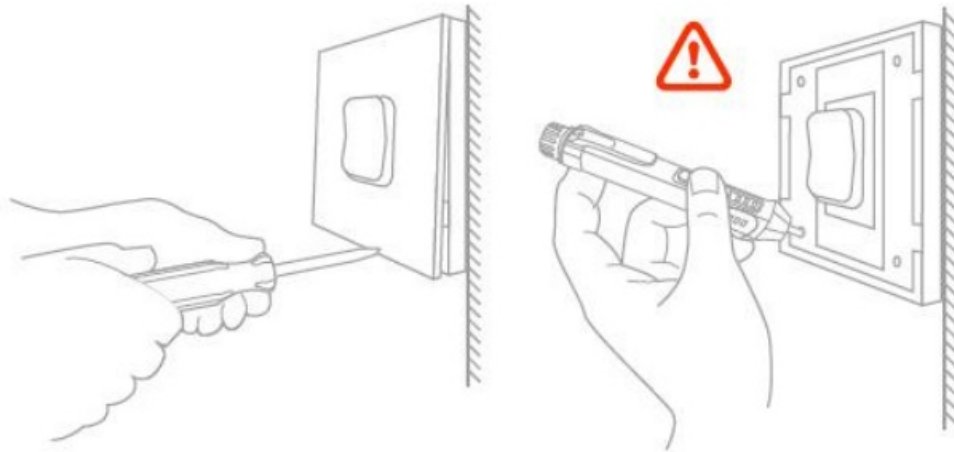
- Turn off the circuit breaker and use the electrical tester to test the power.
- Ensure the circuit breaker is off before wiring.



⚠ Attention: Please disconnect the power supply before installing or removing the device for avoiding irreversible damage on the device from the electric current or some unpredictable problems such as lamp flashing.

Step 2

Remove the old switch.



Step 3:

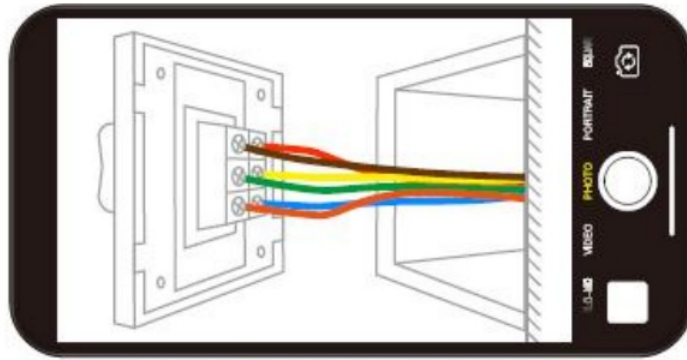
Remove the switch and pull it away from the wall. Identify Line/Load Wire (Note: The color of your wire may be different from the color shown on the manual.)

⚠ Verify power is off

- We recommend you remove the faceplate from the old switch and use an electrical tester to test all wires connected to the switch to ensure there is no voltage in the circuit.
- You may need to turn off more than one circuit breaker.

Step 4:

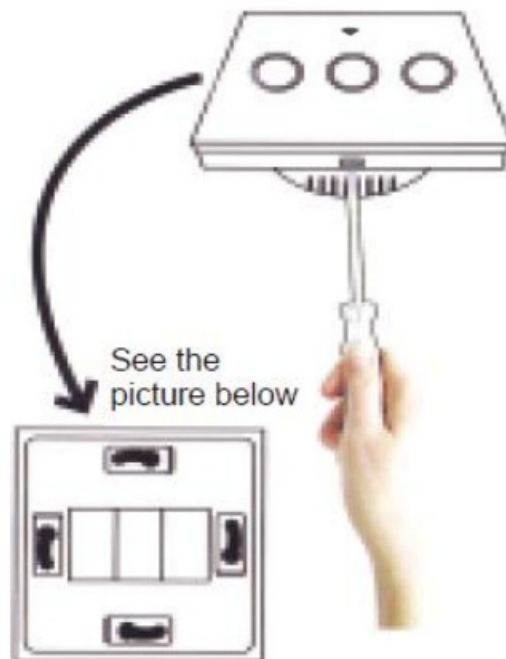
- Take pictures of the wiring.



- Follow the wiring diagram to connect the switch wires to the wires in the wall box with the wire conductors.

Step 5:

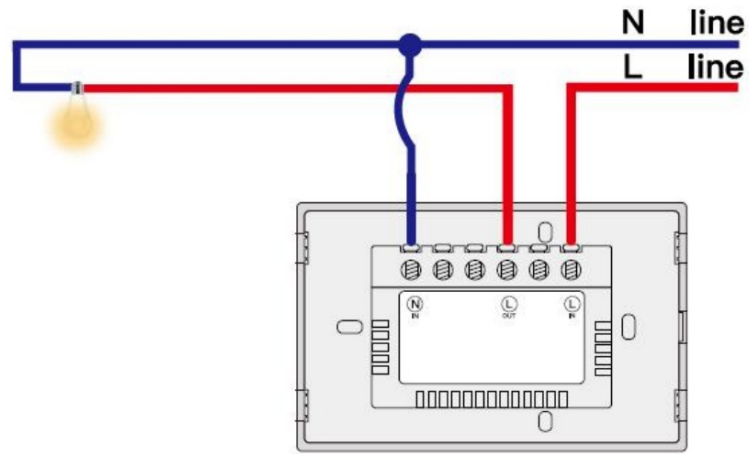
- Remove the panel with screwdriver.
- Please don't install with electricity power on.



Step 6:

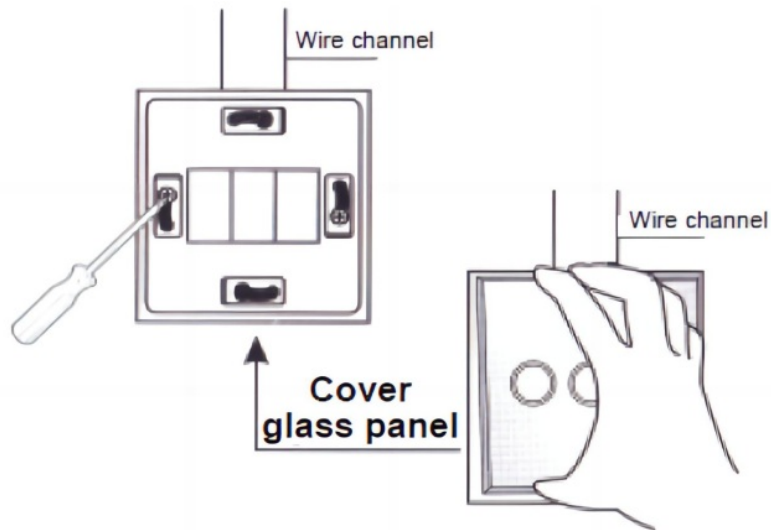
- Prepare to install wiring.
 - A. Live wire connects " L " terminal.
 - B. Neutral wire connects " N " terminal.

1 Gang connects "L1" terminal
1 Gang L1 and N line.



Step 7:

- Put the switch into switch box in the wall.
- Mount the two side screws.
- install the glass panel (install from up above).
- Finish installation.



ADD DEVICES

1. Download Smart Life App.



<http://app.yimusmart.com/smartlife>

<http://app.yimusmart.com/smartlife>

Please scan the QR code or download Smart Life on App store.

2. Registration or Log in.

- Download “Smart Life”Application.
- Enter the Register/Login interface;tap “Register” to create an account by entering your phone number to get verification code and “Set password”.Choose “Log in” if you already have a Smart Life account.

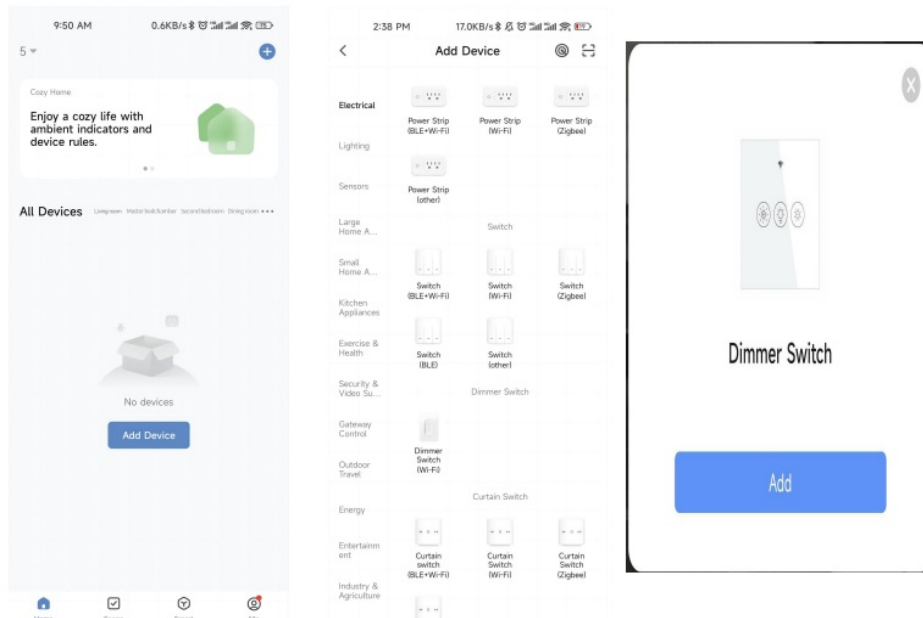
3. Configure the APP to the switch.

- Preparation: Ensure the switch has been connected with electricity;ensure your phone has been connected to Wi-Fi and is able to connect to the Internet.

Note:

- The switch only supports 2.4G network.If you have connected 5G network,please disconnect 5G network firstly and connect 2.4G network.
- Wi-Fi link method: (two matching methods).

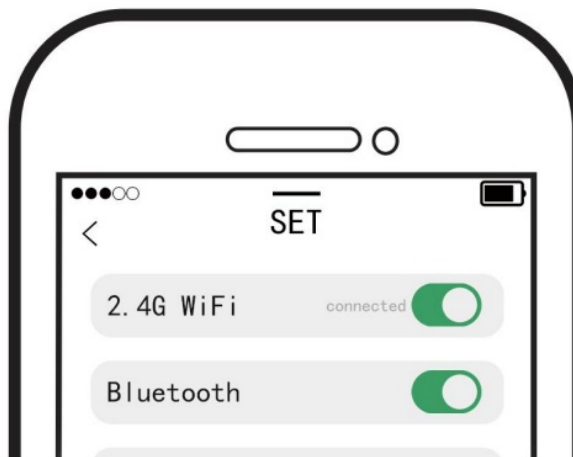
3.1. Method one:



Please connect the device according to the configuration process.

3.2. Method two:

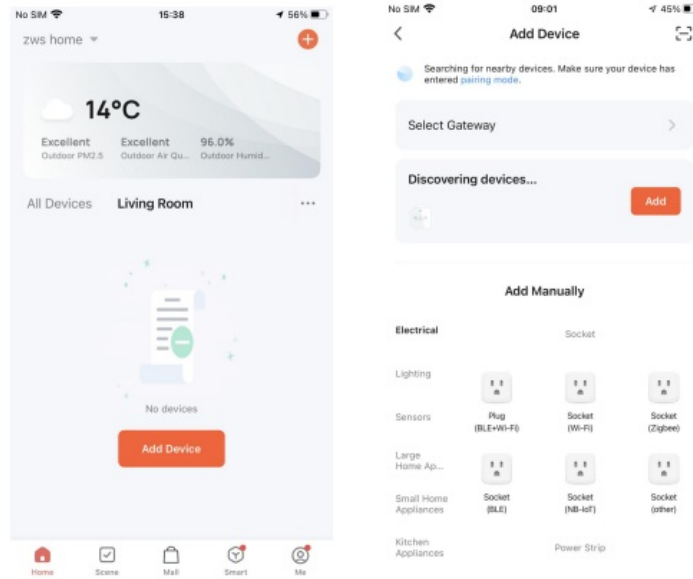
- Make sure your phone is connected to Wi-Fi and Bluetooth.



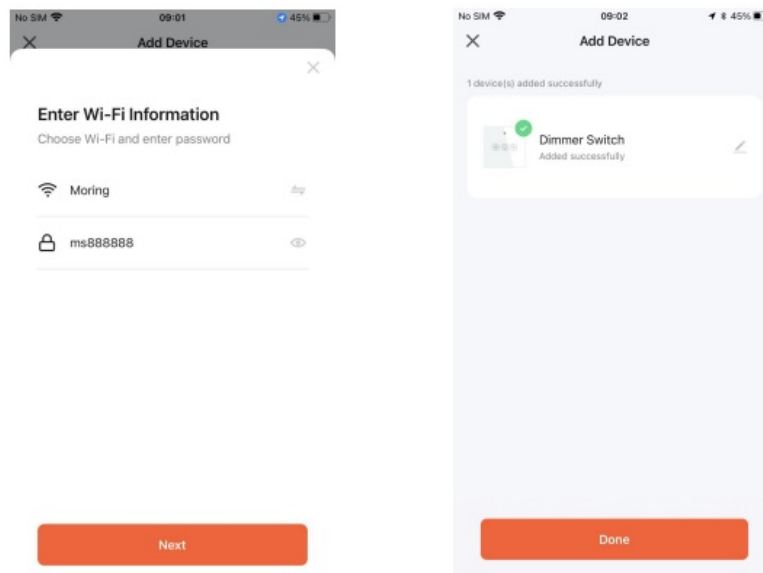
- Reset: Press the switch button for 6 times,and hold on the 6th time,then release until you hear Di-Di-

Di(3times),and the blue indicator on the switch will flash fast after 3 seconds.Reset/re-pair is successful.

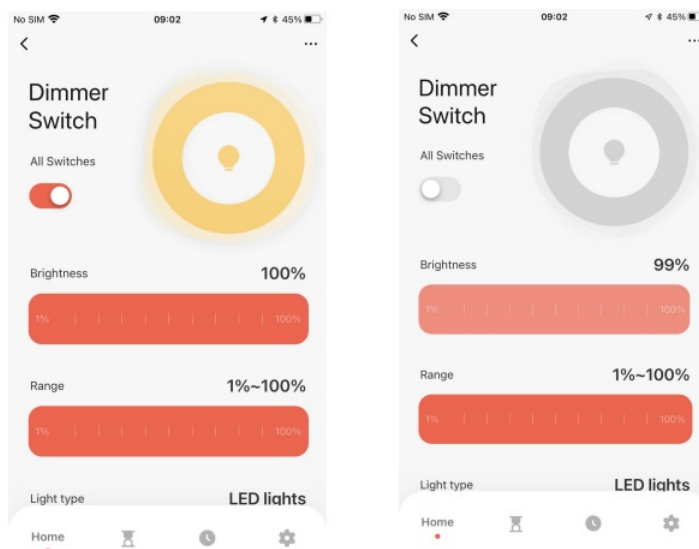
- Open the Smart Life App, click “+” in the upper right corner, find the device to be added in the device discovery location, and click “Add”.

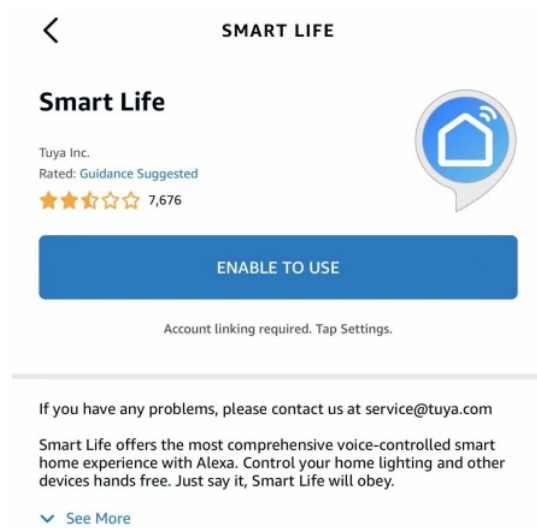
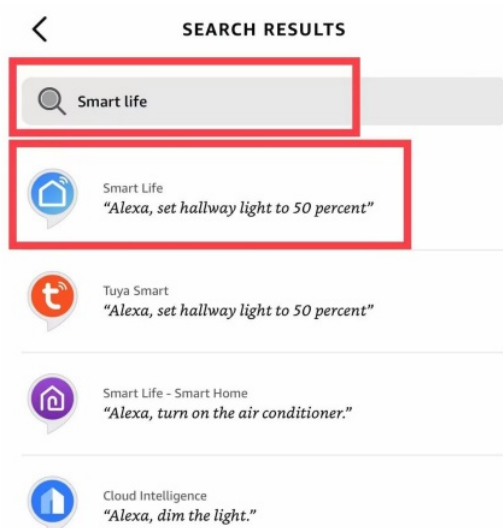


- Enter the Wi-Fi password, click “Next”, and wait for the connection to complete.Add the device successfully,you can edit the name of the device to enter the device page by click “Next”

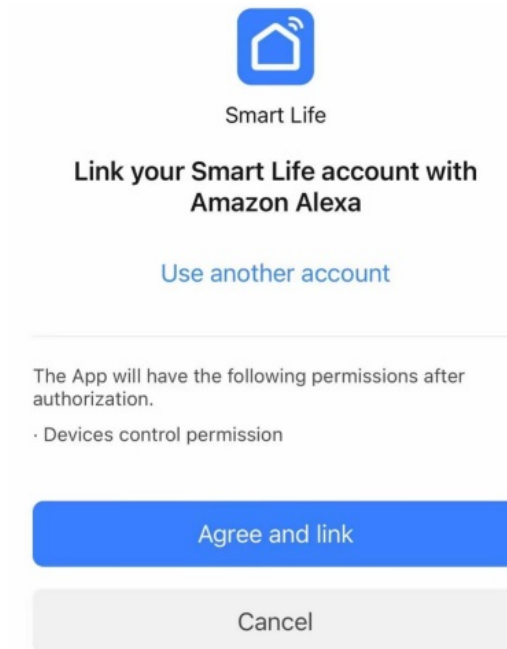


- Click“Done”to enter the device page to enjoy your smart life with home automation





- Once your account has been successfully linked, ask Alexa to discover devices. After a 20-second searching, Alexa will show all the available devices.



- In the Smart Home page, you can group your devices in different categories. Your SMART LIFE APP has now been paired with Alexa. Now you can control your Smart Device through Alexa.

VEVOR®


TOUGH TOOLS, HALF PRICE

Technical Support and

E-Warranty Certificate

www.vevor.com/support

Documents / Resources

	<p>VEVOR WS-USR-D Smart Dimmer Switch [pdf] Instruction Manual WS-USR-D Smart Dimmer Switch, WS-USR-D, Smart Dimmer Switch, Dimmer Switch</p>
---	---

References

- [VEVOR Contact Us – Official VEVOR Support](#)
- [VEVOR Contact Us – Official VEVOR Support](#)
- [User Manual](#)

[Manuals+](#), [Privacy Policy](#)

This website is an independent publication and is neither affiliated with nor endorsed by any of the trademark owners. The "Bluetooth®" word mark and logos are registered trademarks owned by Bluetooth SIG, Inc. The "Wi-Fi®" word mark and logos are registered trademarks owned by the Wi-Fi Alliance. Any use of these marks on this website does not imply any affiliation with or endorsement.