

**VEVOR®**  
**TM-30F Electronic**  
**Price Computing**  
**Scale**



# VEVOR TM-30F Electronic Price Computing Scale Installation Guide

[Home](#) » [VEVOR](#) » VEVOR TM-30F Electronic Price Computing Scale Installation Guide 

## Contents

- [1 VEVOR TM-30F Electronic Price Computing Scale](#)
- [2 Product Information](#)
- [3 Product Usage Instructions](#)
- [4 FAQ](#)
- [5 Software install](#)
- [6 Operation Manual](#)
- [7 Communication](#)
- [8 Base setting](#)
- [9 Report](#)
- [10 Documents / Resources](#)
  - [10.1 References](#)

# VEVOR®

**VEVOR TM-30F Electronic Price Computing Scale**



## Product Information

### Specifications

- **Model:** TM-30F
- **Type:** Electronic Price Computing Scale
- **Software:** Included, downloadable via QR code
- **Support:** Technical Support and E-Warranty Certificate available at [www.vevor.com/support](http://www.vevor.com/support)

### Product Usage Instructions

Follow the steps below to install the software:

- Click to start the installation process.
- Follow the on-screen instructions by clicking "Next" until prompted.
- Create a new folder for the software settings.
- Complete the installation by clicking "Install".
- Once installed, a shortcut will be created on the desktop.
- Open the software from the desktop.
- Explore the main interface which includes settings for merchandise, labels, hotkeys, and more.
- Access features like record queries, daily reports, monthly reports, and stall queries.

### FAQ

- **Q:** Where can I find technical support or warranty information?

- **A:** For technical support and warranty certificates, visit [www.vevor.com/support](http://www.vevor.com/support).
- **Q:** How can I download the software for the TM-30F model?
- **A:** Scan the QR code provided in the manual to download the software.

We continue to be committed to providing you tools with at a competitive price.

“Save Half”, “Half Price” or any other similar expressions used by us only represent an estimate of savings you might benefit from buying certain tools with us compared to the major top brands and do not necessarily mean to cover all categories of tools offered by us. You are kindly reminded to verify carefully when you are placing an order with us.

#### **MODEL: TM-30F**



#### **NEED HELP? CONTACT US!**

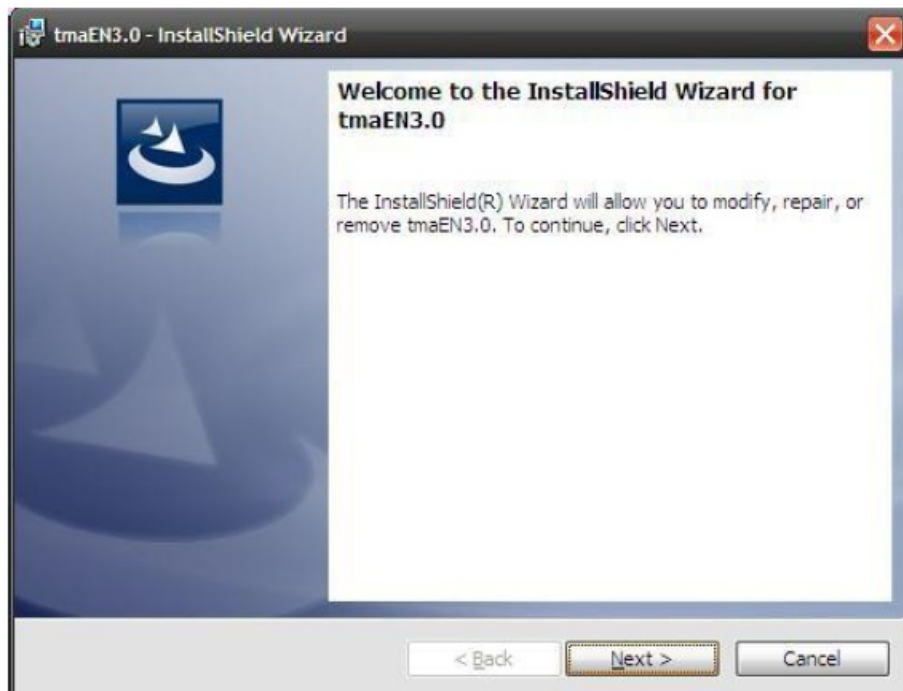
- Have product questions? Need technical support? Please feel free to contact us:
- Technical Support and E-Warranty Certificate
- [www.vevor.com/support](http://www.vevor.com/support)

This is the original instruction, please read all manual instructions carefully before operating. VEVOR reserves a clear interpretation of our user manual. The appearance of the product shall be subject to the product you received. Please forgive us that we won't inform you again if there are any technology or software updates on our product.

#### **Software install**



- Click, and install the software.



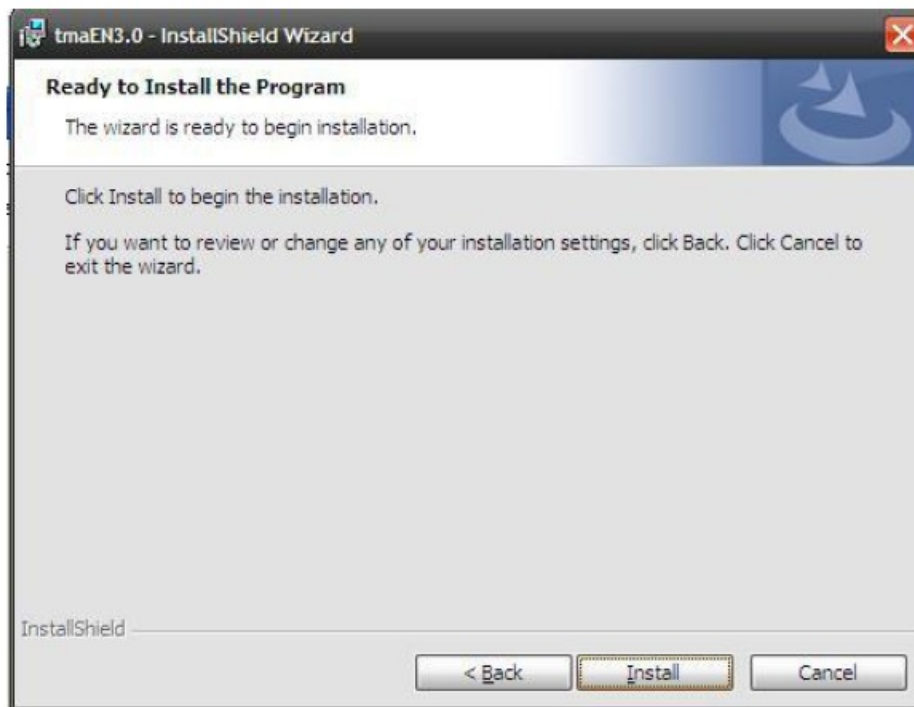
Picture1.1

- Click “next”to next step.



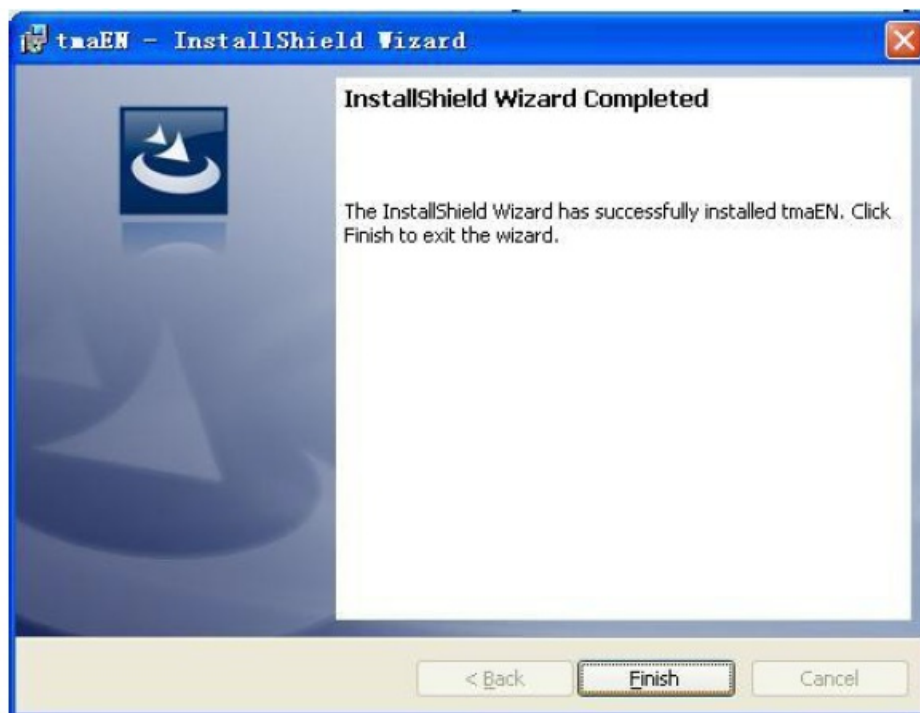
Picture1.2

- Click “change” change setting path. It’s better build a new folder,then click “next”



Picture1.3

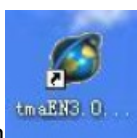
- Click “install” to next step

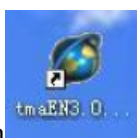


Picture1.4

- Setting is over and will have a shortcut picture on the desktop.

## Operation Manual



- Open  on the desktop, there is a main interface (picture 2.1)



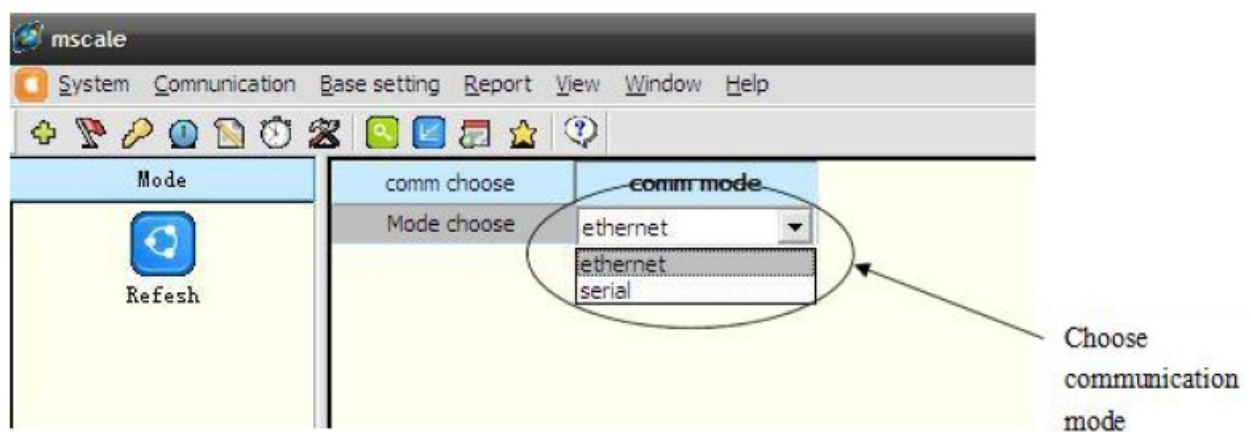
Picture 2.1 main interface

**Picture 2.1 the arrows means:**

1. merchandise setting
2. label setting
3. hotkey setting
4. advertisement information setting
5. text information setting
6. clock setting
7. other parameter setting
8. record query
9. daily report
10. monthly report
11. stall query
12. about mscale

## Communication

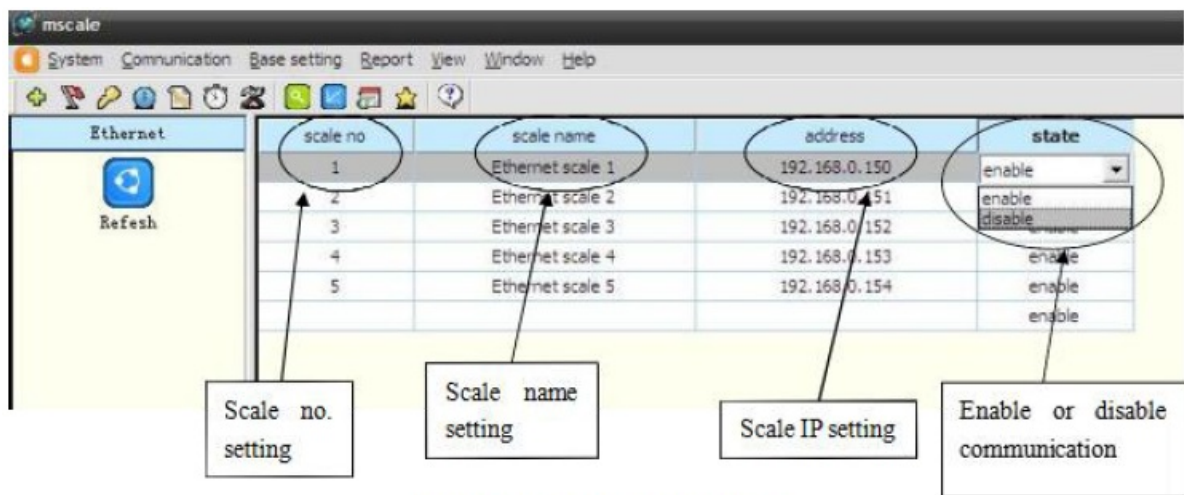
mode



Picture 2.2 main interface

- Choose communication mode, and then choose communication mode “ethernet” or “serial”

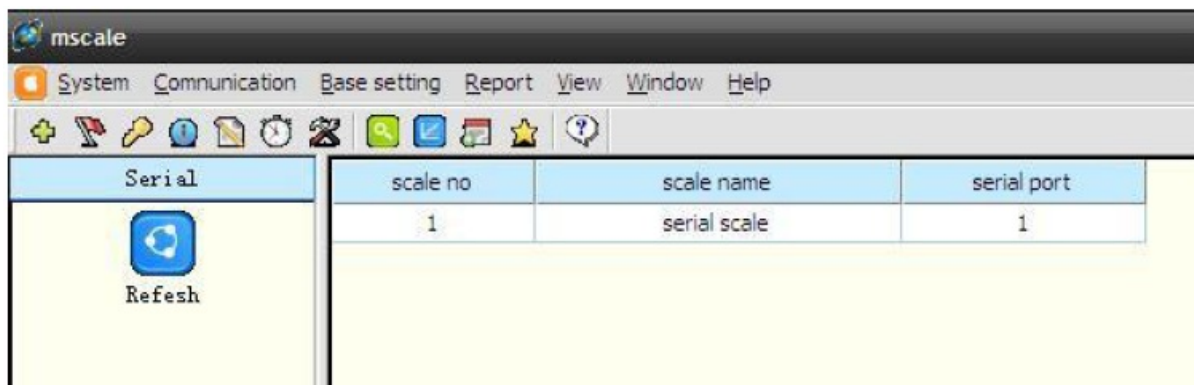
## Ethernet



Picture 2.3 Ethernet setting

- Choose communication Ethernet, and then set scale no. , scale name, scale IP address, and state setting.

## serial

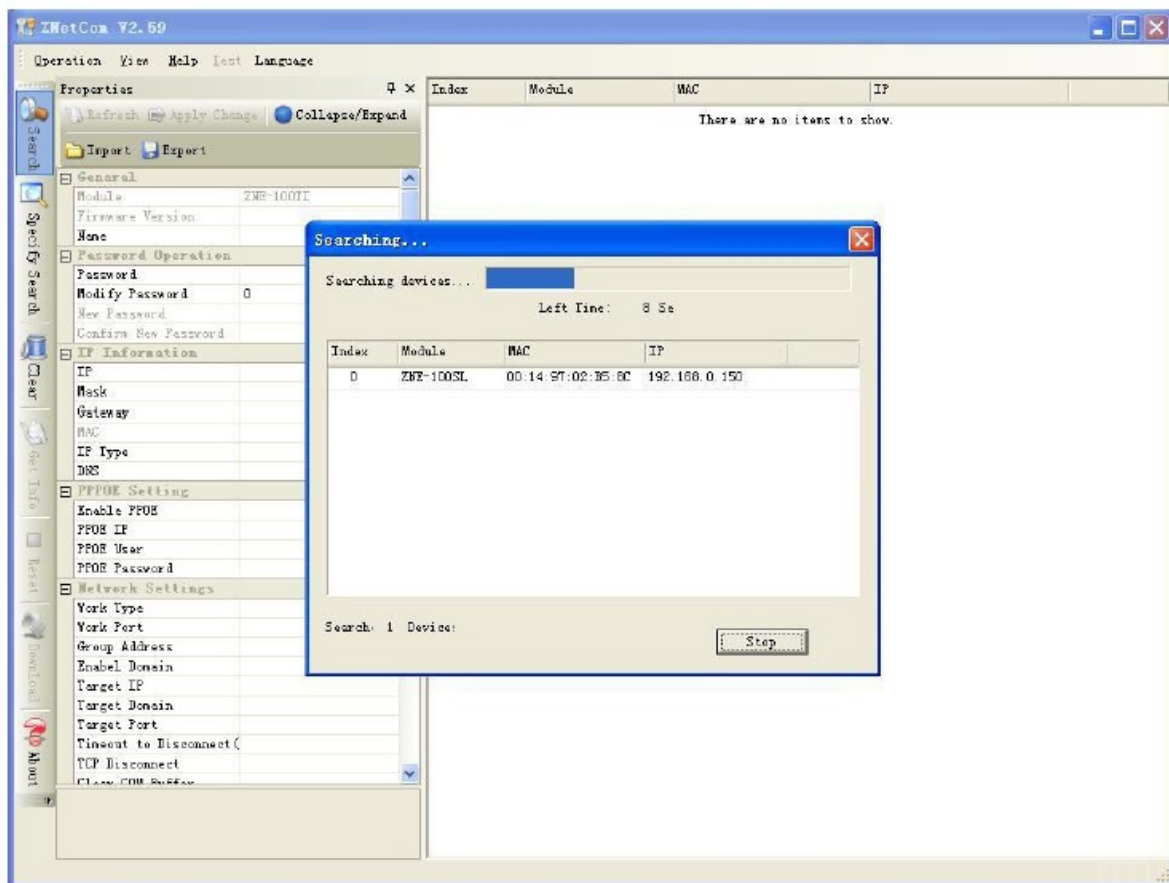


Picture 2.4 serial setting

- Choose communication Serial, then set scale no., scale name, and serial port. Like picture 2.4

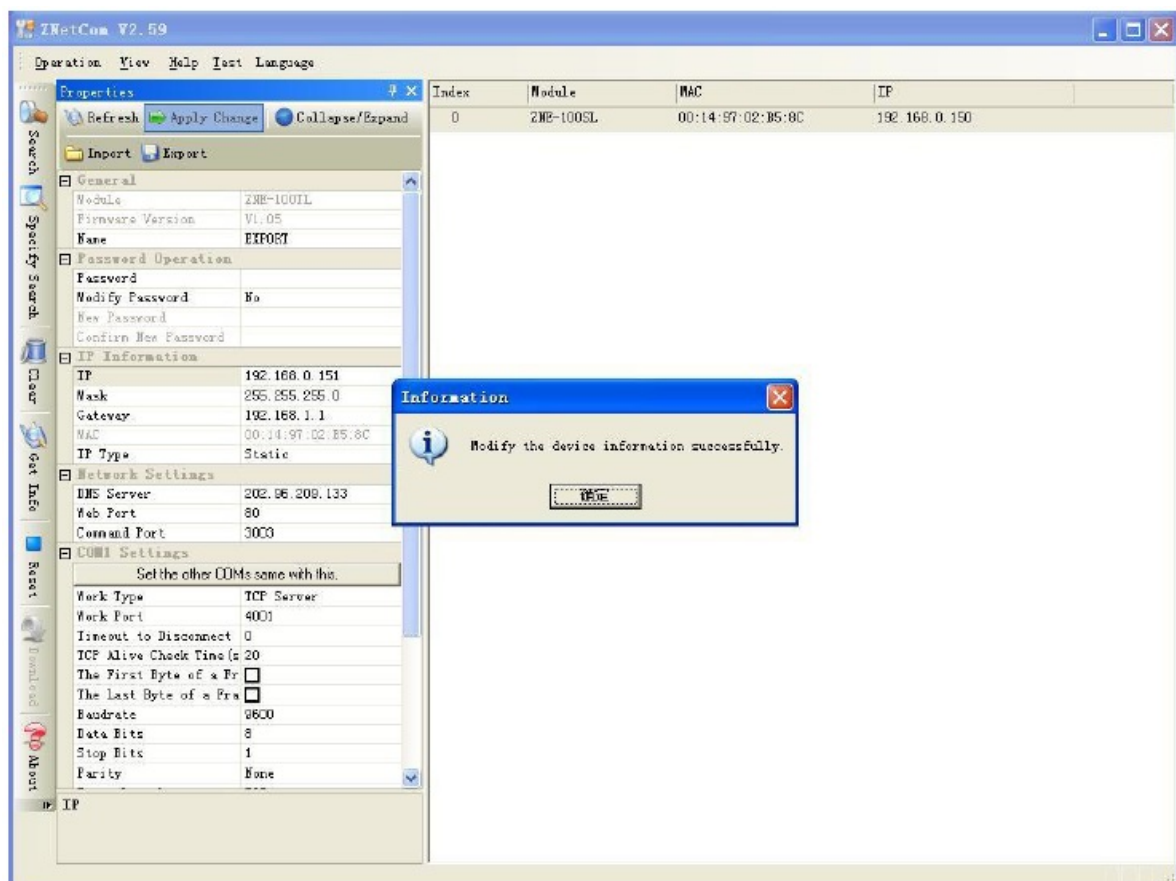
## Searching and Setting





Picture 2.5 IP seaching and setting

- Choose communication Znet, search scale IP address like picture 2.5

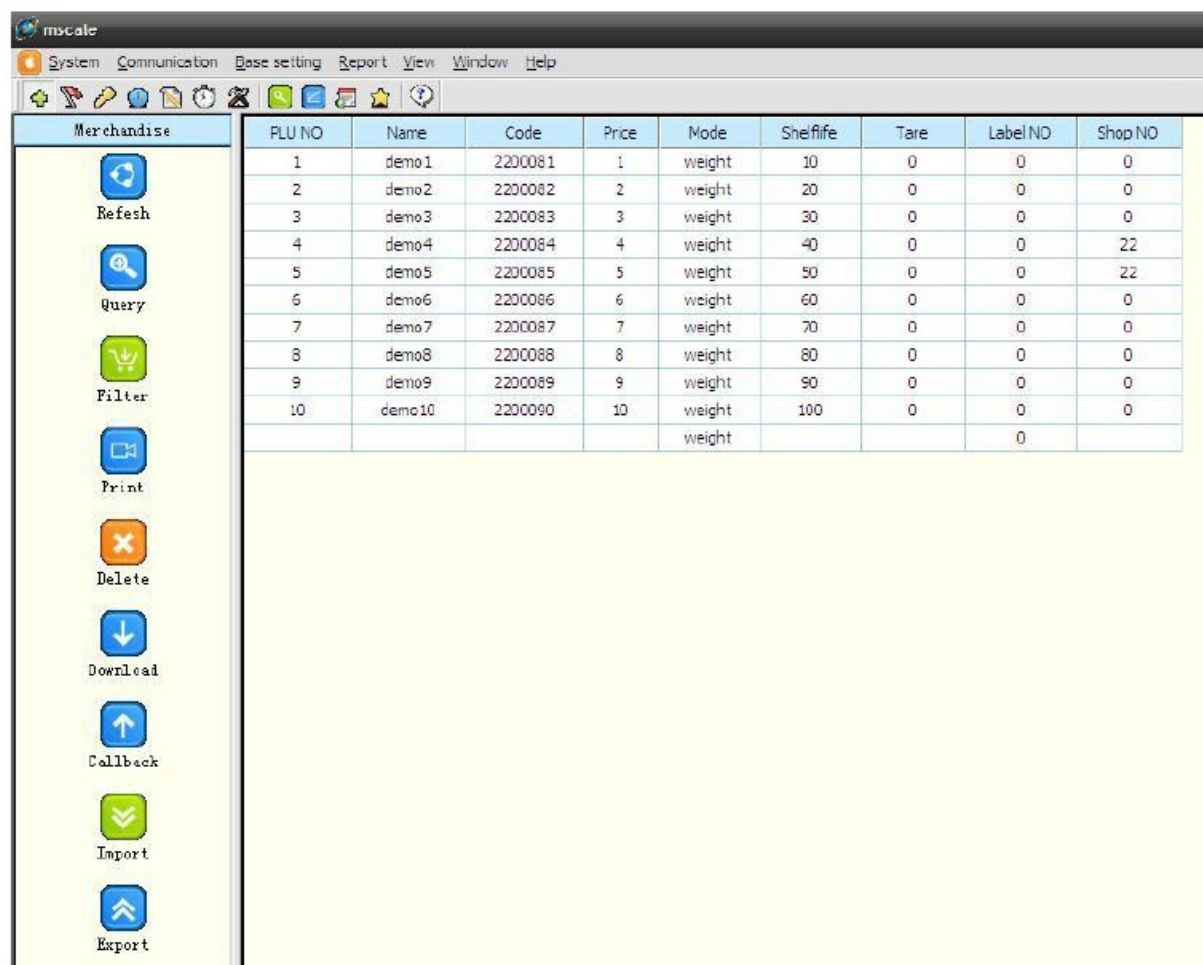


Base setting



## Merchandise

Merchandise settings include query, filter download, callback, import, export, etc. Choose base setting merchandise open the window like picture 2.7→ fill in merchandise information. Blank can be empty, but Plu Number can not be .

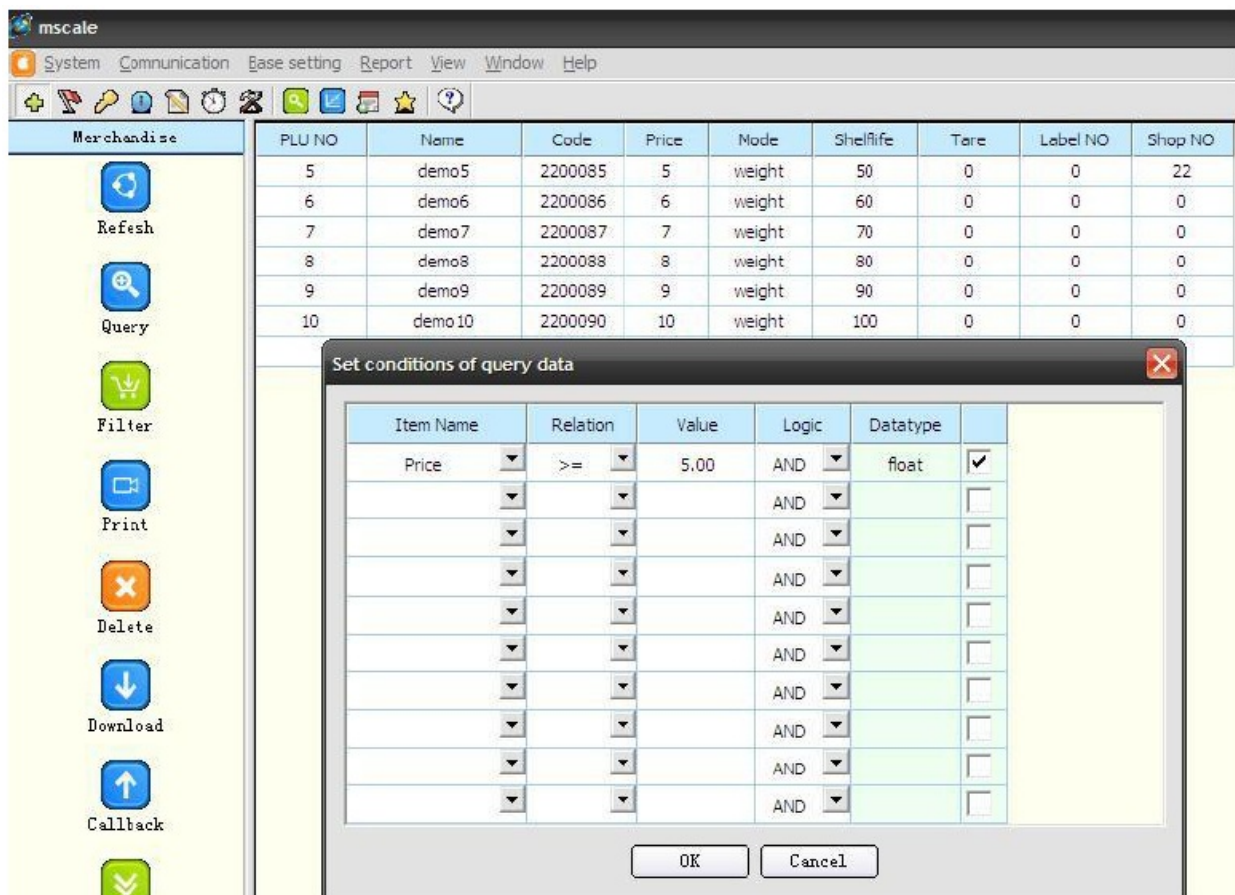


PLU NO	Name	Code	Price	Mode	Shelf life	Tare	Label NO	Shop NO
1	demo1	2200081	1	weight	10	0	0	0
2	demo2	2200082	2	weight	20	0	0	0
3	demo3	2200083	3	weight	30	0	0	0
4	demo4	2200084	4	weight	40	0	0	22
5	demo5	2200085	5	weight	50	0	0	22
6	demo6	2200086	6	weight	60	0	0	0
7	demo7	2200087	7	weight	70	0	0	0
8	demo8	2200088	8	weight	80	0	0	0
9	demo9	2200089	9	weight	90	0	0	0
10	demo10	2200090	10	weight	100	0	0	0
				weight			0	

Picture 2.7 merchandise setting

## Query

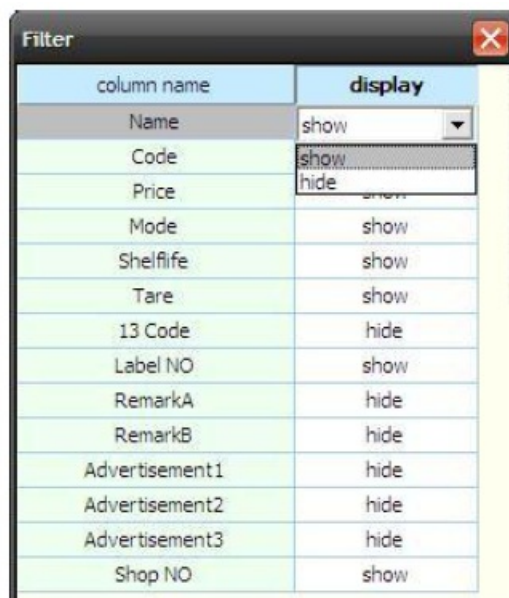
Choose base setting merchandise, click query like picture 2.8, item name choose an item, For example, item name choose price, relation choose  $\geq$ , value choose 5.00, means when the price  $\geq$  5, can show merchandise information, like picture 2.8



Picture 2.8 query setting

### Filter

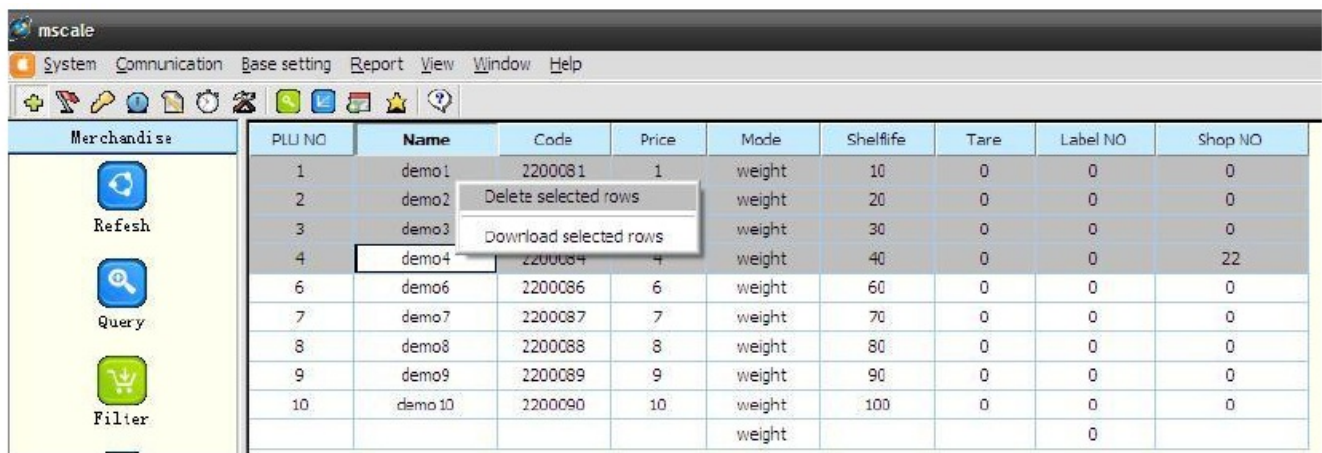
Filter means to show or hide every merchandise information column, like in picture 2.9



Picture2.9 filter setting

### Delete

delete means delete one or some selected merchandise information, like picture 2.10



Picture2.10 delete merchandise information setting

### Download

Before downloading, first choose communication, like picture 2.2. If it is an Ethernet scale, first set the scale IP address, like in picture 2.3.

Choose base setting merchandise download, then select scale IP address, like picture2.11, also can select some merchandise information, then download, like picture2.10

NO.	IP Address	Port	State	Count	Percentage
1	192.168.0.150	4001	Communication success	10	100.00%
2	192.168.0.151	4001	Connecting...		
3	192.168.0.152	4001	Connecting...		
4	192.168.0.153	4001	Connecting...		
5	192.168.0.154	4001	Connecting...		

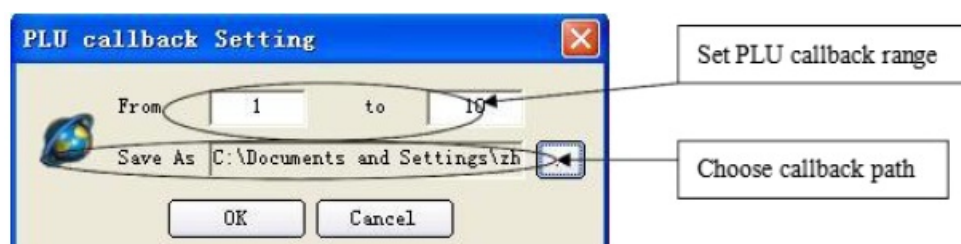
00:00:04

Cancel

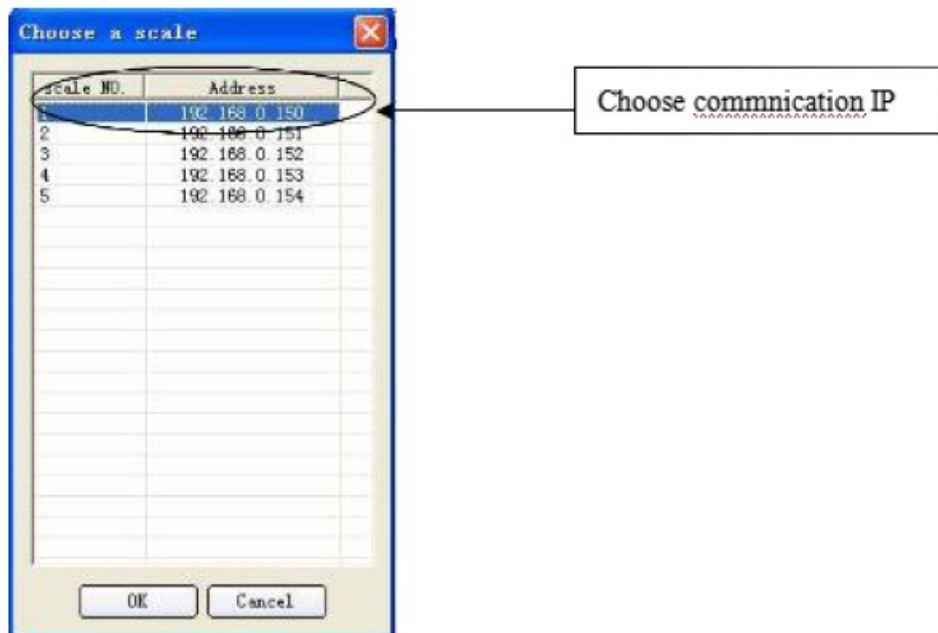
Picture2.11 download

### Callback

Choose base setting merchandise callback, like picture2.12



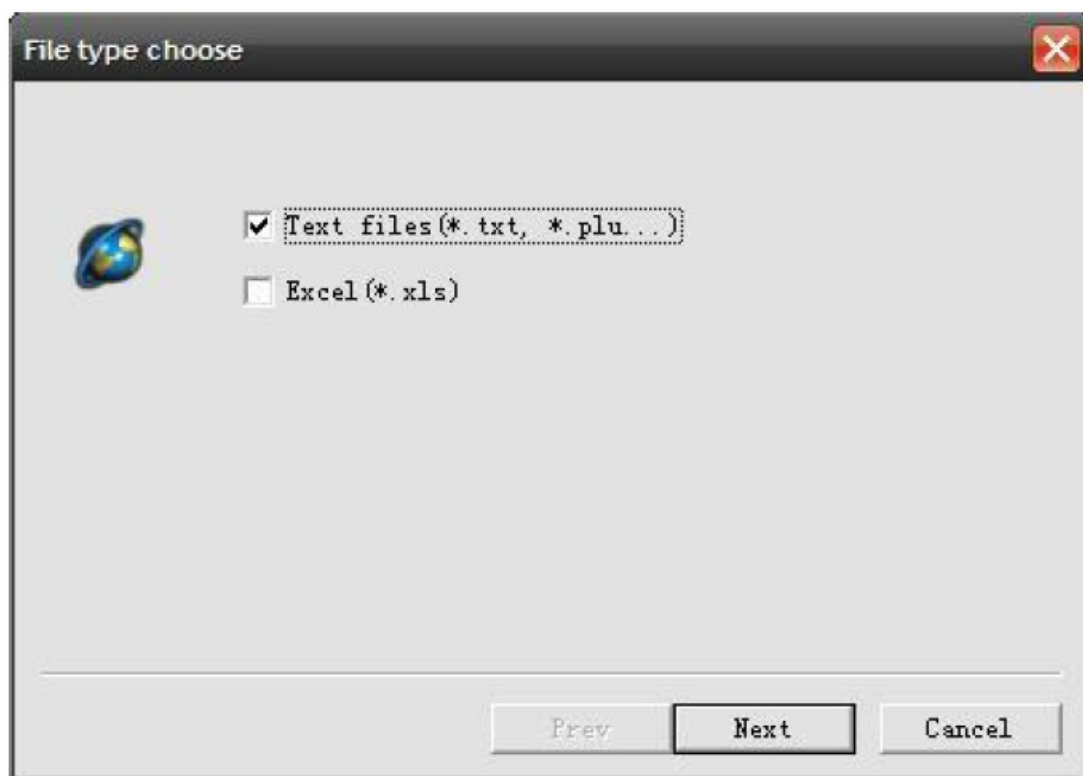
picture2.12



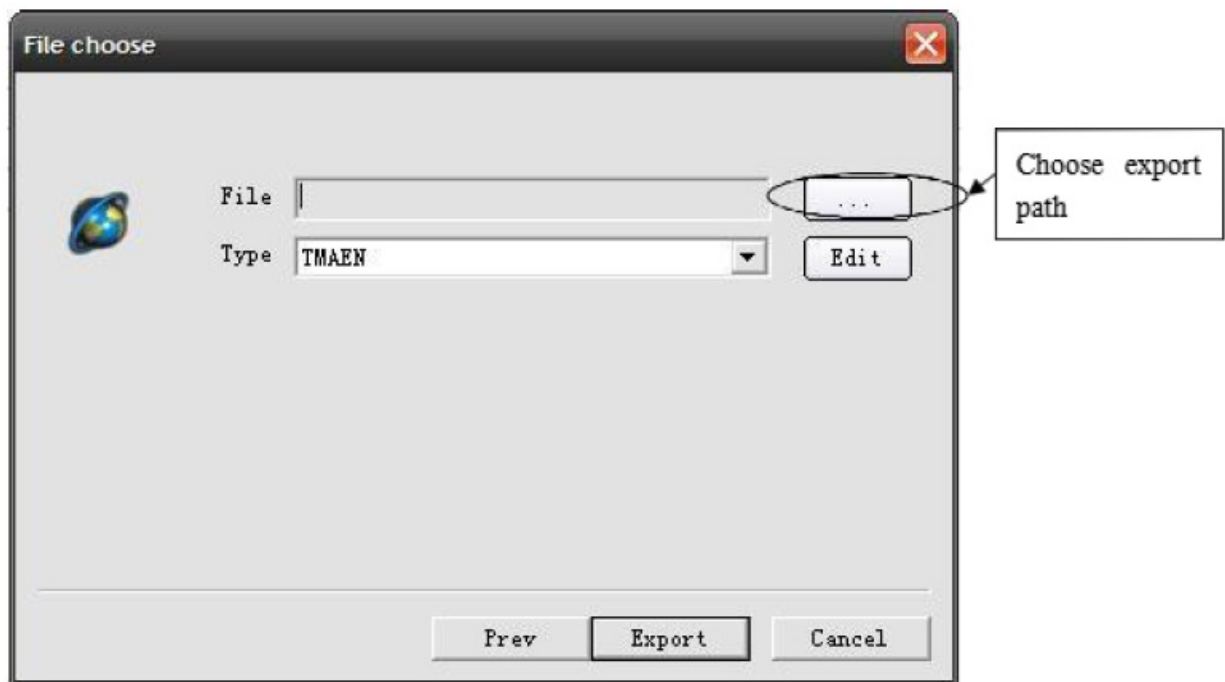
picture2.12

### Export

Choose base setting merchandise export, like picture2.13, and choose file type “text files” or “excel”.



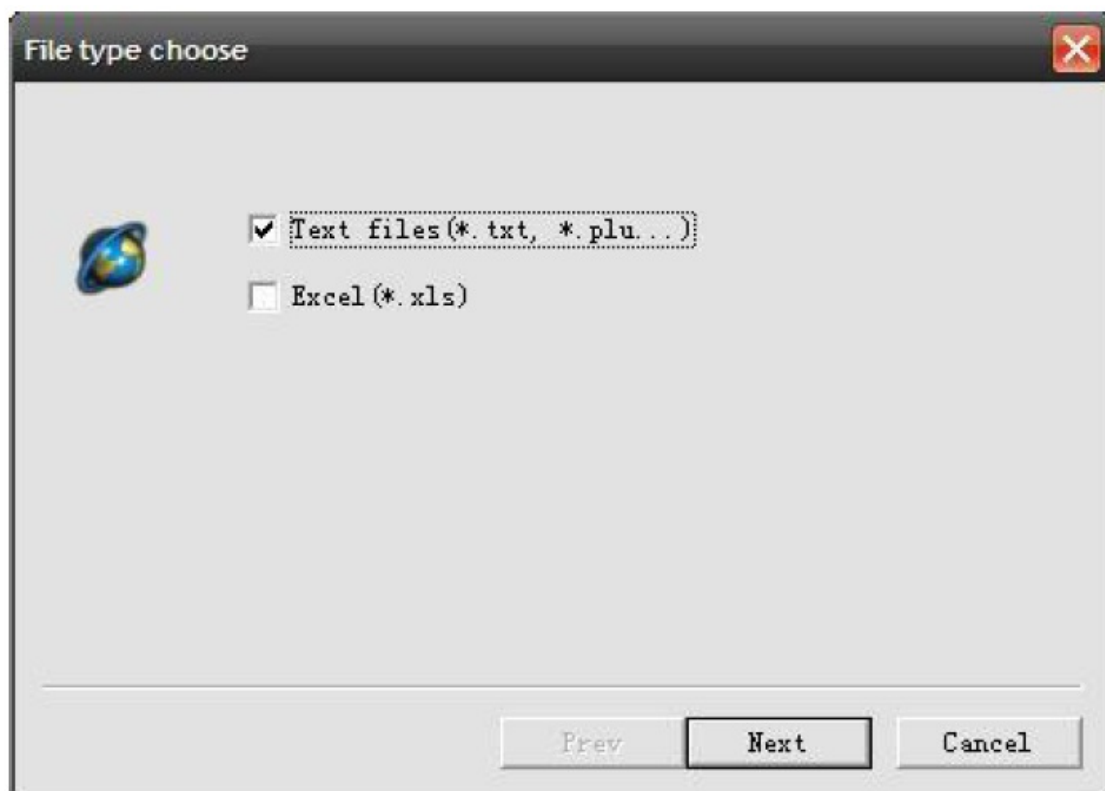
picture2.13 PLU export



picture2.14

### Import

Choose base setting merchandise import, like picture2.15, and choose file type “text files” or “excel”. Then click “next”, like picture 2.15, then choose import type and path, and click “import”.



picture2.15

- If choose “clear the database before importing”, it will clear all original PLU information.





picture2.16

### Label

label setting main includes download and callback

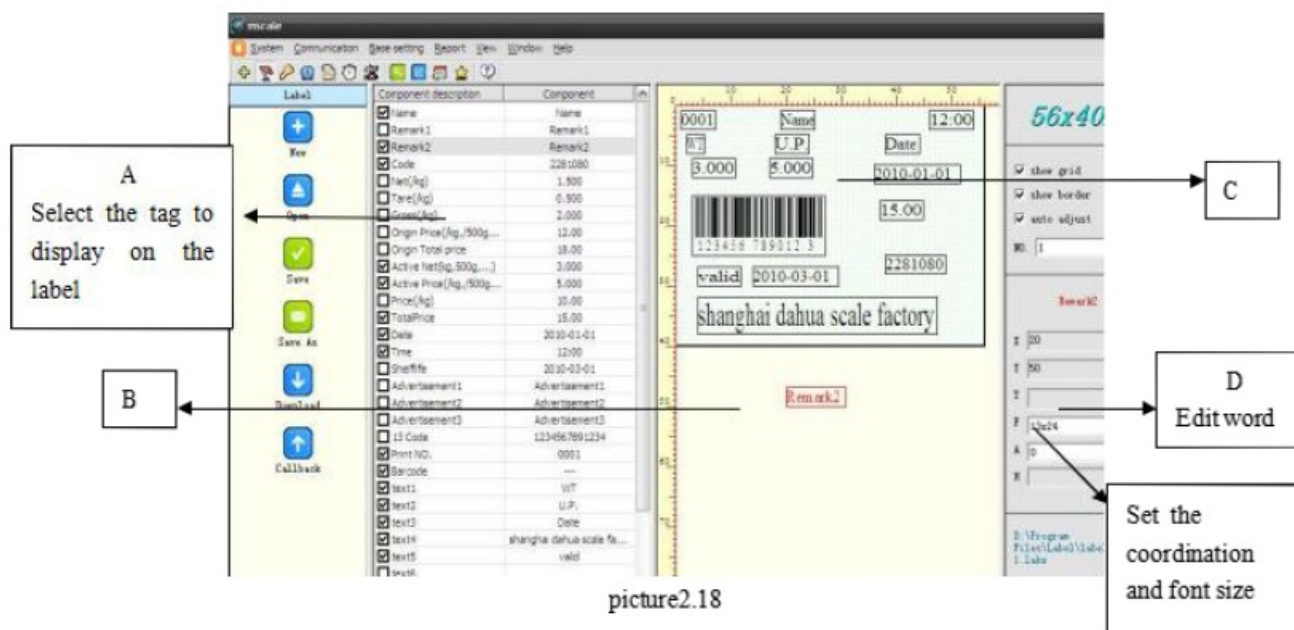
### New

Label setting simulates each tag item's position in the actual label. Each tag item has coordinates, you can drag it to change its position in the actual label.

Choose base setting label new, new build a new label, like picture 2.17



picture2.17



Like picture 2.18, new do a label, choose left frame A area, it will have an item on the B area, then drag it to C area, if it is text and edit it on the right D area.

The set is over, can save it or download it.

**NOTE:** set the weight, should set active net.

## Hotkey

hotkey main includes download, callback, and keyboard set. Choose base setting hotkey, like picture 2.19 set pannel NO. and PLU NO. and merchandise name, download, and callback is the same merchandise.

HotKey	Pannel NO	PLU NO	Name
Refresh	1	1	demo1
Download	2	2	demo2
Callback	3	3	demo3
Keyboard set	4	4	demo4
Print Keypanel	5	5	demo5
	6	6	demo6
	7	7	demo7
	8	8	demo8
	9	9	demo9
	10	10	demo10
	11	11	
	12	12	
	13	13	
	14	14	
	15	15	
	16	16	
	17	17	

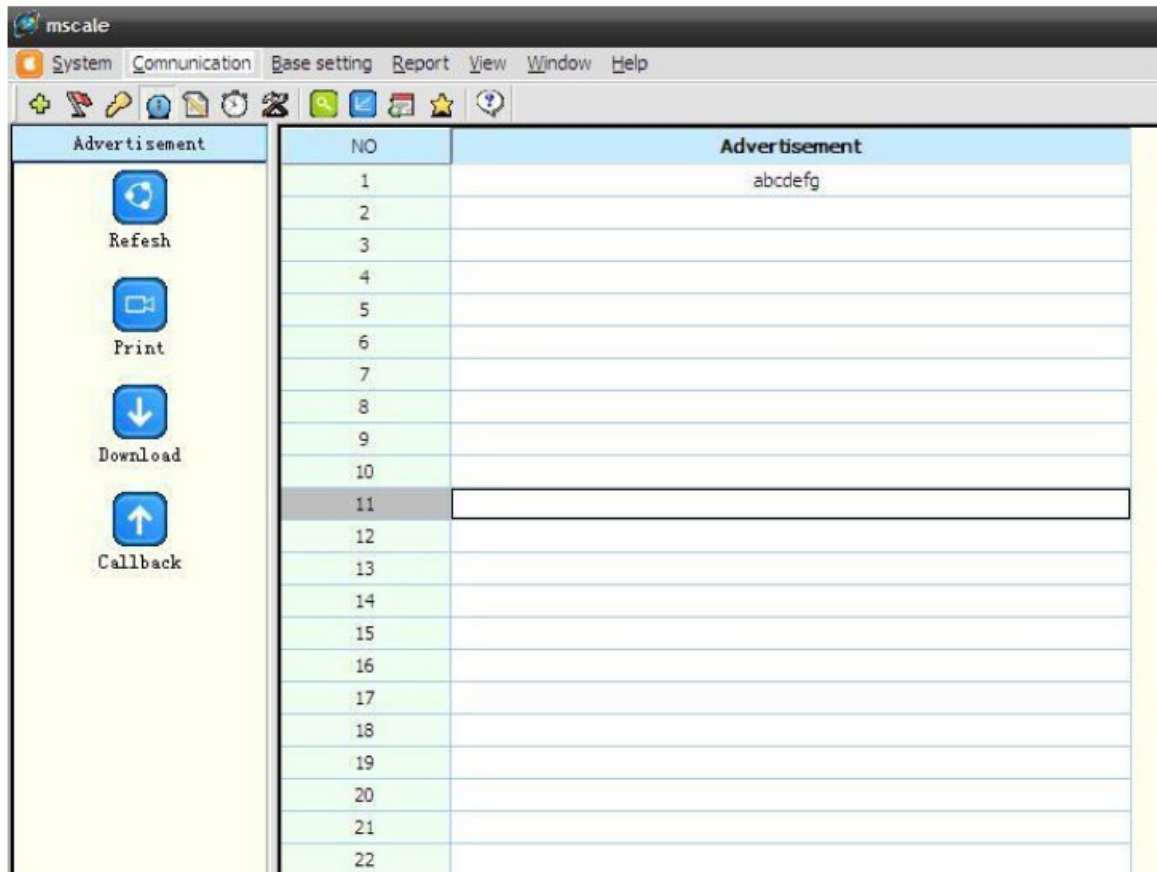
Picture 2.19

## Advertisement

- Choose a base setting advertisement, like picture 2.20, on the "advertisement" column edit the advertisement and download or callback.
- Same as Label Setting, If want to modify the current scale, call the current settings then start modifying. Click



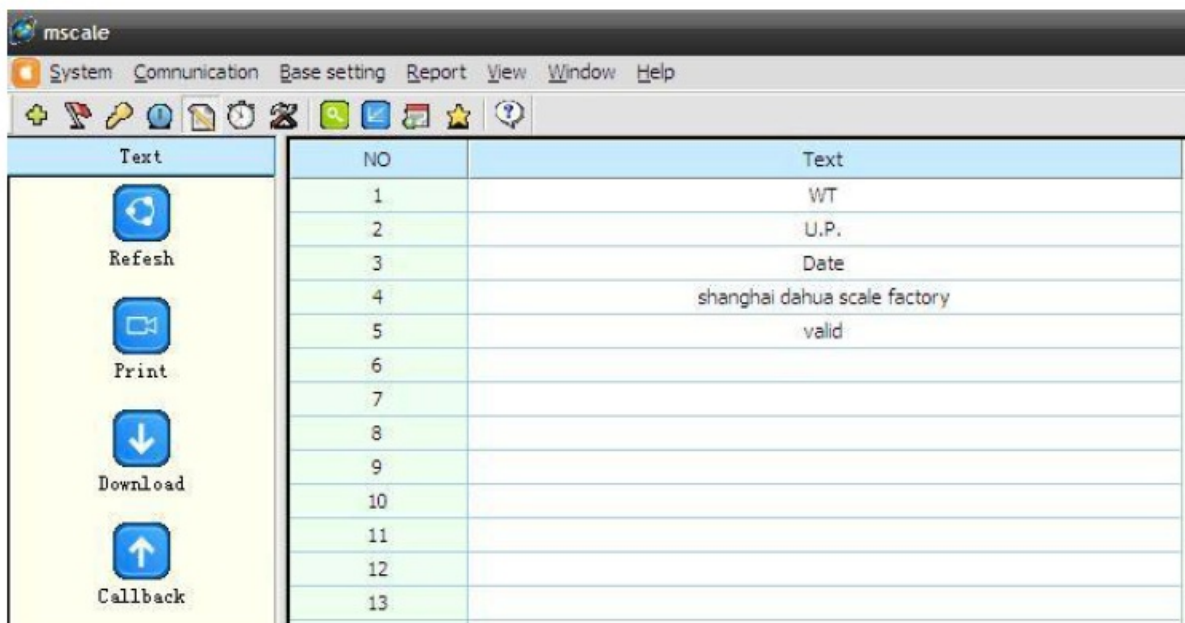
- Download the button to return (save) to the scale



Picture 2.20

### Text

Choose base setting text, like picture 2.21, on the "text" column edit the text, and download or callback



### Clock

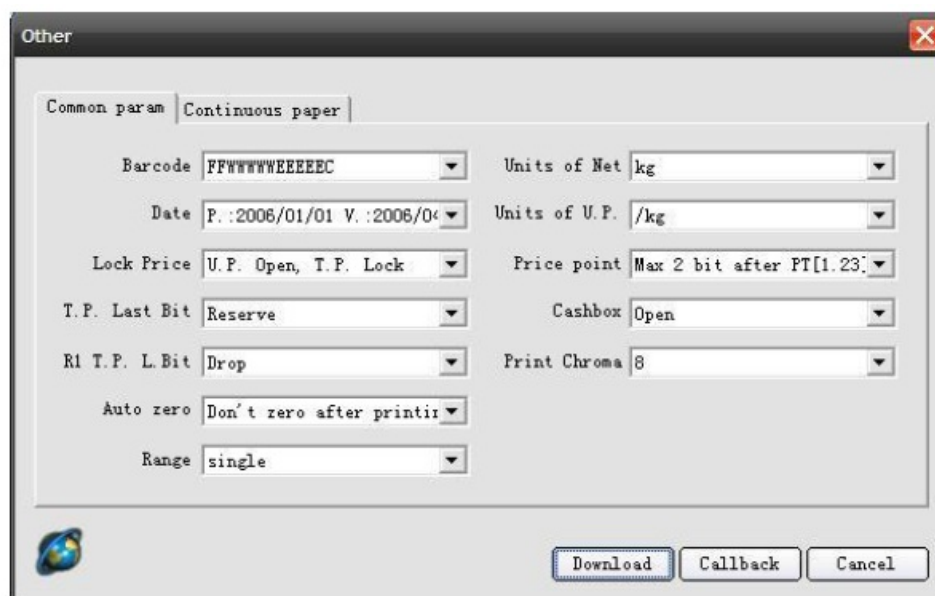
Choose a base setting clock, like picture 2.22 Set scale Time to be the same as the computer



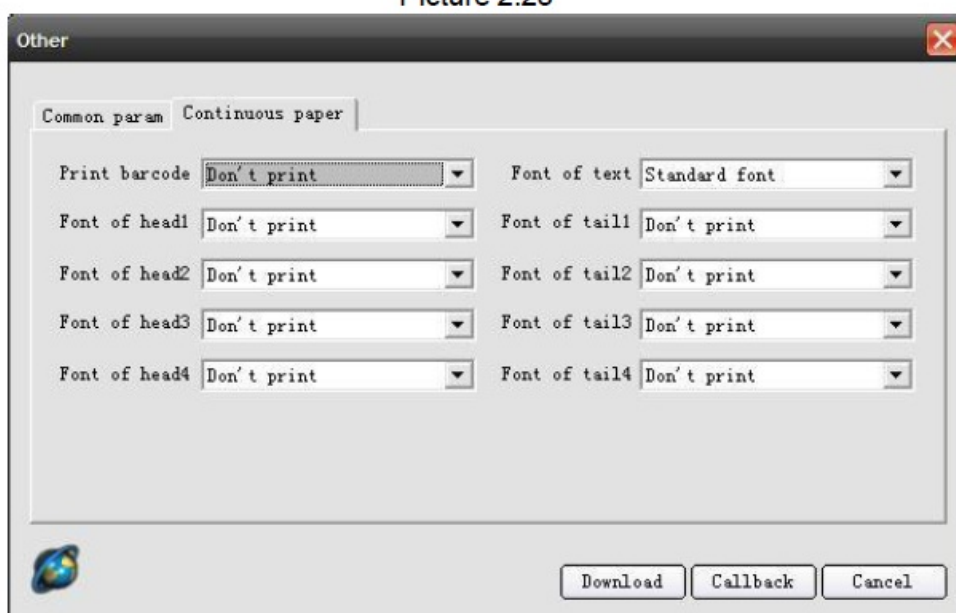
Picture 2.22

## Other

- Choose a base setting other, like picture 2.23
- Other main include common parameters and continuous paper settings.
- Same as Label Setting, If want to modify the current scale, call the current settings then start modifying. Click the Download button to return back(save) to the scale.



Picture 2.23



Picture 2.24

## Initial

Initialization (picture 2.25), main function: Clear sales data; Clear PLU database in the scale; Initialize system

parameter. This function is usually used in the factory. If must use it, suggest calling the PLU and sales data, to avoid losing the data in the scale.



Picture 2.25

Report

- Report main includes record query, daily report, and monthly report.

Record query

- Choose report record query callback, like picture 3.1, and click finish, like picture 3.2 detail sales report.
- Picture3.1 record callback

NO.	IP Address	Port	State	Count	Percentage
1	192.168.0.150	4001	Communication success	7	--
2	192.168.0.151	4001	Connection failed		
3	192.168.0.152	4001	Connection failed		
4	192.168.0.153	4001	Connection failed		
5	192.168.0.154	4001	Connection failed		

00:00:17

Finish

Picture 3.1

Time	PLV NO	Weight	Mode	Price	Total Price	Scale NO
2010-09-09 08:49:00	1	0.780	weight	1.00	0.80	1
2010-09-09 08:49:00	2	0.780	weight	2.00	1.60	1
2010-09-09 08:49:00	4	0.780	weight	4.00	3.10	1
2010-09-09 08:49:00	1	0.780	weight	1.00	0.80	1
2010-09-09 08:49:00	7	0.780	weight	7.00	5.50	1
2010-09-09 08:49:00	8	0.780	weight	8.00	6.20	1
2010-09-09 08:49:00	1	0.780	weight	1.00	0.80	1

Picture3.2 sale record

## Daily Report

Choose report daily report callback, like picture3.3

PLV NO	Name	Count	Sales volume	Sales amount
1	demo1	8	5.095	5.2
2	demo2	3	1.2	2.4
3	demo3	2	0.985	2.9
4	demo4	2	0.985	3.9
7	demo7	2	1.02	7.2
8	demo8	1	0.78	6.2
add up	6	18	10.065	27.8

Picture 3.3 daily report

## Monthly report

Choose report monthly report callback, like picture3.4

Date	Count	Sales volume	Sales amount
2010-09-09	18	10.065	27.8
add up	18	10.065	27.8

Picture3.4 monthly report

## Stall report

Choose report stall report callback, like picture3.5





-  [Contact Us – Official VEVOR Support](#)
- [User Manual](#)

[Manuals+](#), [Privacy Policy](#)

This website is an independent publication and is neither affiliated with nor endorsed by any of the trademark owners. The "Bluetooth®" word mark and logos are registered trademarks owned by Bluetooth SIG, Inc. The "Wi-Fi®" word mark and logos are registered trademarks owned by the Wi-Fi Alliance. Any use of these marks on this website does not imply any affiliation with or endorsement.