

VETEK EBW-ERT Scale Program



VETEK EBW-ERT Scale Program User Guide

[Home](#) » [VETEK](#) » VETEK EBW-ERT Scale Program User Guide 

Contents

- [1 VETEK EBW-ERT Scale Program](#)
- [2 Install drive software](#)
- [3 Run weighing software](#)
- [4 Specifications](#)
- [5 Frequently Asked Questions \(FAQ\)](#)
- [6 Documents / Resources](#)
 - [6.1 References](#)
- [7 Related Posts](#)

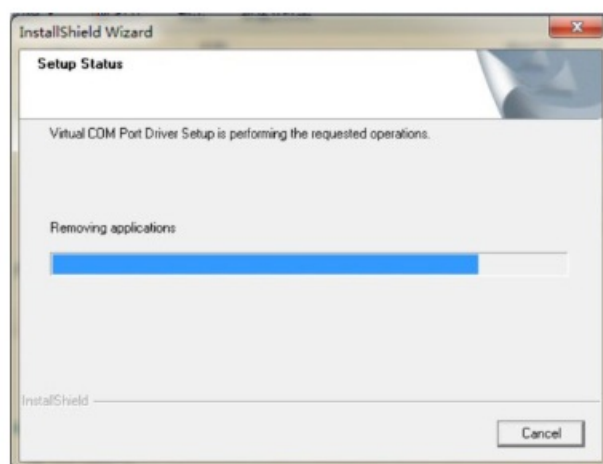
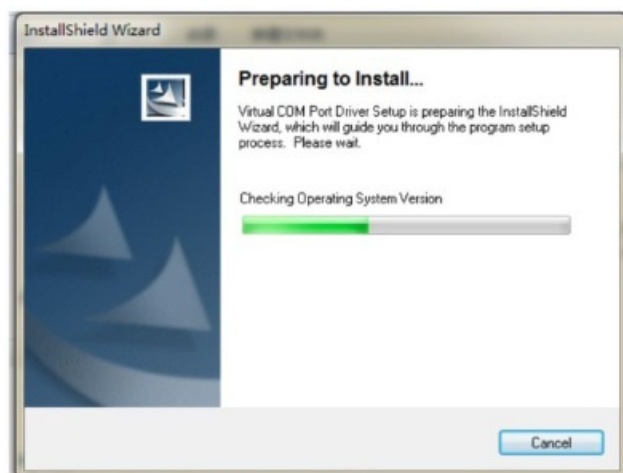


VETEK EBW-ERT Scale Program



Install drive software

When 180 USB kit connects to the PC first time, the PC will request drive software(some PCs can auto distinguish it, no need to run drive software) , please run drive software at first, the drive software are in attach CD ROM. Insert CD ROM, running “ VCP_1.3.1_Setup”(please choose 32 or 64 according to your computer configuration)



After “ VCP_1.3.1_Setup”be running, plug in the USB kit to the PC, PC will auto-find it. you can open the device

manager to check whether virtual com port communication is successful or not. if the device manager has below pictorial prompts it means it is successful.



Note: the port number is random, if the port number is more than 4, you need to change it, normally can change it to "COM3".

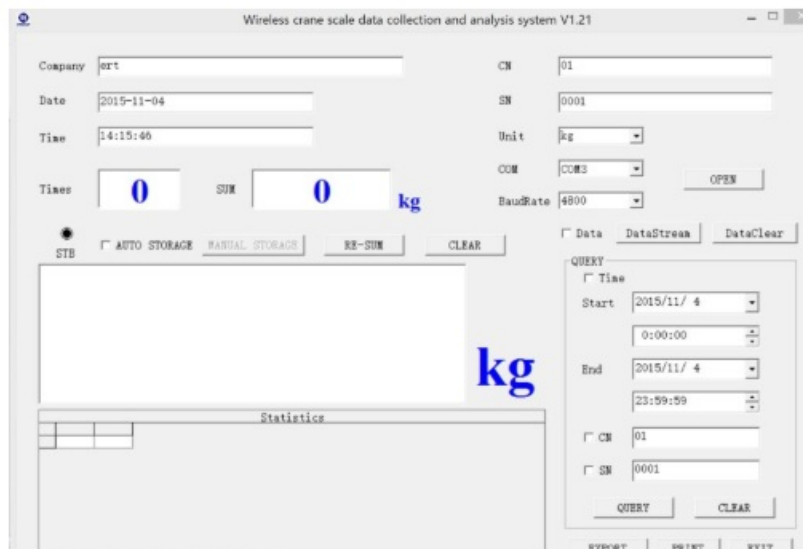
Run Enscaletsetup

After running the drive software, Run Enscaletsetup, this program makes sure that weighing software can run on different computers.

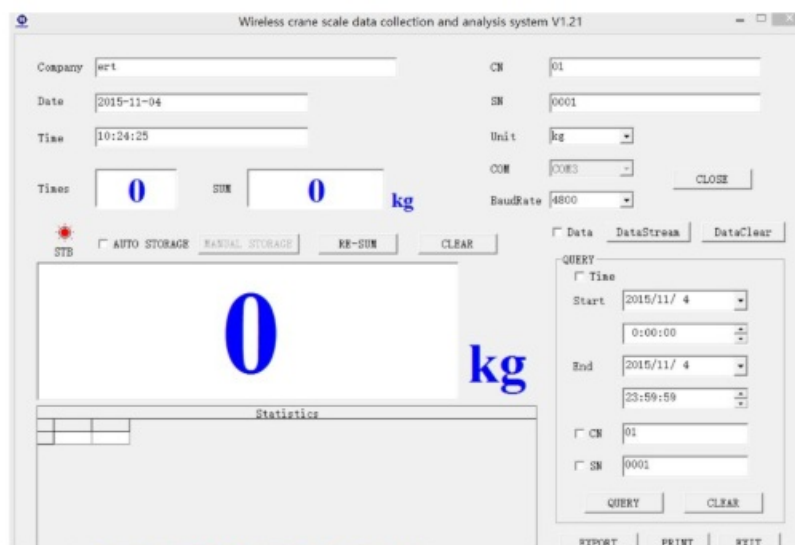
Run weighing software



After running Enscaletsetup the user can run weighing software



Choose COM to COM3, then press OPEN, it display as follows:



Now the computer can receive the data from the 180 indicator. After the test is stable, the STB light will become

red, we have two data save methods, one is auto storage(tick before AUTO-STORAGE), which can save data after every test is stable. Another is to save manually, after STB before red, press MANUAL STORAGE, and the data is saved manually. RE-SUM is used for Accumulating again, CLEAR is used for restarting the Times, and SUM At the page top right, CN means Cargo number(user can define it by themselves) SN means serial number(user can also define it) After several tests, it display as follows:

Wireless crane scale data collection and analysis system V1.21

Company: ert CN: 02

Date: 2015-11-04 SN: 0001

Time: 15:11:21 Unit: kg

COM: COM3 BaudRate: 4800

Times: 4 SUM: 360 kg

STB AUTO STORAGE MANUAL STORAGE RE-SUM CLEAR

0 kg

WeighDate	WeighTime	CN	SN	Weigh	Unit	Company
2015-11-04	15:08:42	02	0001	95	kg	ert
2015-11-04	15:09:16	02	0001	145	kg	ert
2015-11-04	15:09:44	02	0001	50	kg	ert
2015-11-04	15:10:07	02	0001	70	kg	ert

QUERY

Time

Start: 2015/11/ 4 0:00:00

End: 2015/11/ 4 23:59:59

✓ CN: 02

SN: 0001

QUERY CLEAR

EXPORT PRINT EXIT

QUERY area are statistics area. There are 3 statistics methods.

1. Statistics by Time tick before Time and choose the start and end time, press QUERY, Below the test data will appear a forthat m, lists all data between this period.
2. Statistics by CN tick before CN and choose CN number, press QUERY, Below the test data will appear a form, lists all data according to the CN number.
3. Stactistics by SN tick before SN and choose SN number, press QUERY, Below the test data will appear a form, lists all data according to the SN number

Users also can statistics with combination. CLEAR is used for a clear current statistics method. EXPORT is used for exporting detach in the current statistics method to an Excel format file, users can define the file name by themselves.

Specifications

- Product Name: EBW-ERT Scale program
- Version: 1.3.1
- Compatibility: Windows PCs
- Communication: Virtual Com Port (VCP)

Frequently Asked Questions (FAQ)


Q: How do I change the COM port number to COM3?

A: In the device manager, locate the USB kit device, right-click, select Properties, go to the Port Settings tab, and change the port number to COM3.

Q: Can I run the weighing software without installing Enscalesetup?

A: It is recommended to run Enscalesetup before using the weighing software to ensure compatibility across different computers.

Documents / Resources

	<p>VETEK EBW-ERT Scale Program [pdf] User Guide EBW-ERT Scale Program, EBW-ERT, Scale Program, Program</p>
---	--

References

- [User Manual](#)

Manuals+, Privacy Policy

This website is an independent publication and is neither affiliated with nor endorsed by any of the trademark owners. The "Bluetooth®" word mark and logos are registered trademarks owned by Bluetooth SIG, Inc. The "Wi-Fi®" word mark and logos are registered trademarks owned by the Wi-Fi Alliance. Any use of these marks on this website does not imply any affiliation with or endorsement.