

**VERTUO®  
4011796  
Modular  
LED  
Bars**



## VERTUO 4011796 Modular LED Bars Installation Guide

[Home](#) » [VERTUO](#) » VERTUO 4011796 Modular LED Bars Installation Guide 

### Contents

- [1 VERTUO 4011796 Modular LED Bars](#)
- [2 Specifications](#)
- [3 Product Usage Instructions](#)
- [4 WARRANTY](#)
- [5 FAQs](#)
- [6 Documents / Resources](#)
  - [6.1 References](#)
- [7 Related Posts](#)

**VERTUO®**

**VERTUO 4011796 Modular LED Bars**

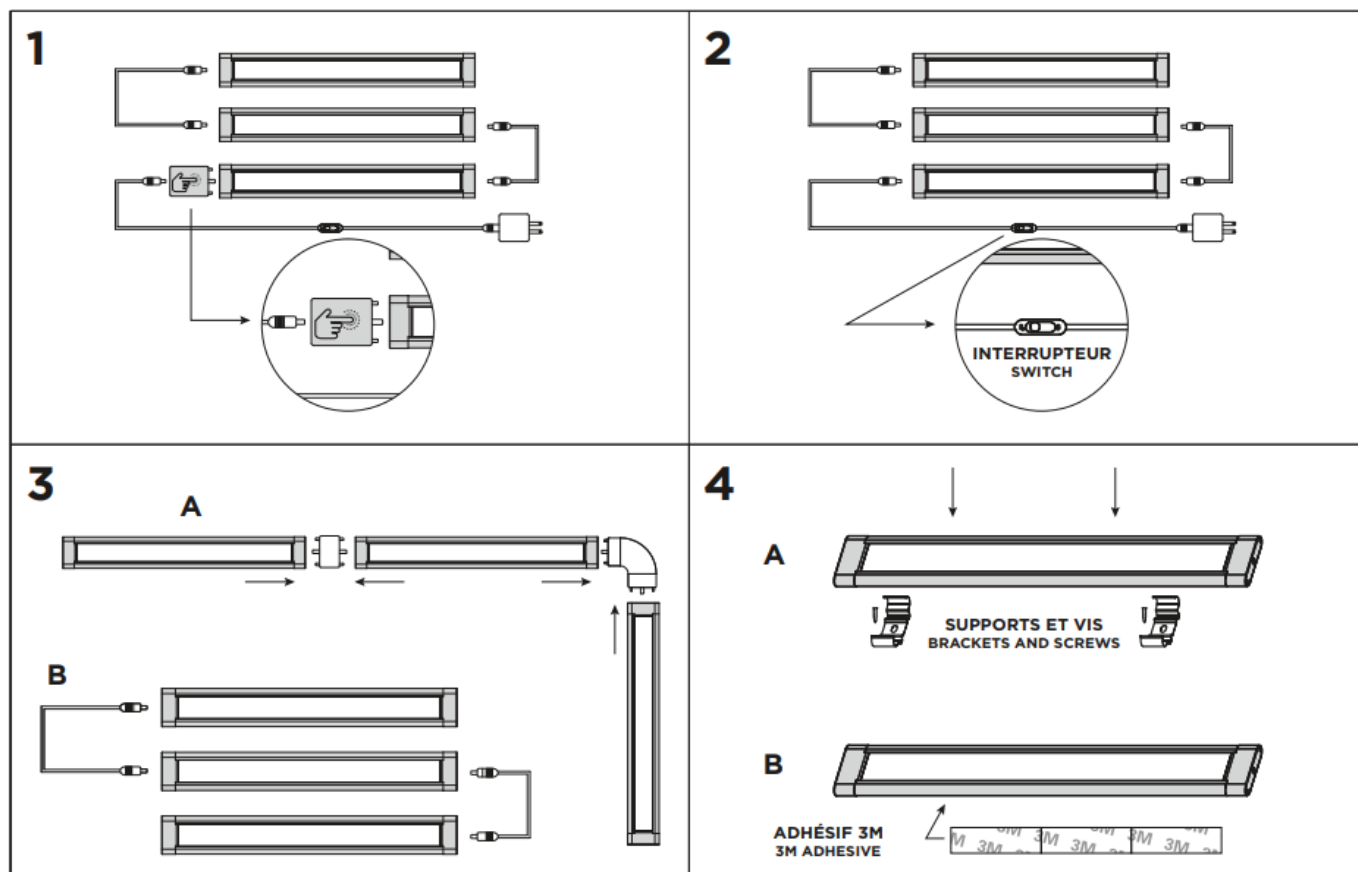


## Specifications

- **Model:** V2405
- **Warranty:** One-year limited warranty
- **Light Intensities:** 6%, 50%, 100%
- **Installation Options:** Ceiling, Underneath counter, Wall
- **Usage:** Indoor

## Product Usage Instructions

### INSTALLATION



1. The dimmer switch can only be connected at this end. When connecting the light bars with the dimmer switch, you get three light intensities (6%, 50% and 100%).
2. When removing the dimmer switch (as shown below) and connecting the LED bars directly to the power supply, the bars will turn on and off with the switch.
3. **a)** You can connect three bars with straight and 90° connectors.
  - **b)** Three bars can also be connected with interconnection cables.
4. **a)** Using the brackets and screws, you can screw brackets on the ceiling, underneath the counter, or on the wall and attach the bars to the brackets. Make sure to respect the length of the cables during installation.
  - **b)** You can also install the lights using the 3M adhesive included. Make sure to respect the length of the cables during installation.
  - **WARNINGS:** For indoor use only. If the cord of the power cable or the interconnection cables are damaged, stop using this product.

## WARRANTY

### ONE-YEAR LIMITED WARRANTY

NOVELCA offers a limited warranty for this product (hereafter: the "Product") for one (1) year from the date of purchase of this Product, with the conditions set out below. This limited warranty is valid only for the original purchaser of the Product and it may not be transferred. The present limited warranty is not meant to exclude, restrict, limit, or modify the legal warranty given by law to the purchaser of the Product. If the Product contains a manufacturing defect or if one or more parts of the Product are defective, the retailer commits to replace or repair, at its sole discretion, the defective part or parts without charge under the following cumulative conditions:

1. the purchaser must contact the retail store where the Product was purchased;
2. the purchaser must return the defective part or parts or the Product to the retailer;

3. the purchaser must provide the retailer with the invoice as proof of purchase and the date of purchase of the Product;
4. the purchaser must supply the Product identification information, including the serial number or the model number; and
5. the period of one (1) year covered by this limited warranty must not be expired. If the retailer decides to replace the defective part or parts, the replacement part or parts would be new or reconditioned, equivalent to new parts. The present limited warranty does not create any other obligation with the provider of the guarantee than those explicitly described above.

- **This limited warranty is not applicable:**

1. to consumable parts;
  2. to normal wear;
  3. when the Product is used for other purposes than what is described in the user guide (if any);
  4. when the serial number or other identification information of the Product is erased or withdrawn;
6. to damages that are only aesthetic and do not affect the normal use of the Product;
  7. when the damages, defects, faults, or other problems arise from:
    - **a)** an inadequate maintenance of the Product;
    - **b)** a faulty installation or assembly of the Product or an installation or assembly that is not by the user or installation guide (if one is provided);
    - **c)** a modification, repair, or dismantling of the Product by a person not authorized by the retailer or the manufacturer;
    - **d)** the transportation by the purchaser, his employee, officer, or representative;
    - **e)** negligence by the purchaser, his employee, officer, or representative;
    - **f)** an accident; g) a case of force majeure or any event that is not caused by the Product itself.

## **FRENCH VERSION VS ENGLISH VERSION**

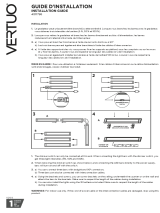
In case of discrepancy between the French and the English versions of the text of this limited warranty, the French version shall prevail.

NOVELCA 5355, boul. des Gradins, Québec (Québec) Canada G2J 1C8

## **FAQs**

- **Q: Can I use this product outdoors?**
  - **A:** No, this product is designed for indoor use only.
- **Q: What should I do if the power cable is damaged?**
  - **A:** Stop using the product immediately and contact customer support for assistance with a replacement.

## **Documents / Resources**

	<p><a href="#">VERTUO 4011796 Modular LED Bars</a> [pdf] Installation Guide</p> <p>4011796 Modular LED Bars, 4011796, Modular LED Bars, LED Bars, Bars</p>
--	--

References

- [User Manual](#)

[Manuals+](#), [Privacy Policy](#)

This website is an independent publication and is neither affiliated with nor endorsed by any of the trademark owners. The "Bluetooth®" word mark and logos are registered trademarks owned by Bluetooth SIG, Inc. The "Wi-Fi®" word mark and logos are registered trademarks owned by the Wi-Fi Alliance. Any use of these marks on this website does not imply any affiliation with or endorsement.