




Verizon GT784 Gateway Router User Guide

[Home](#) » [Verizon](#) » Verizon GT784 Gateway Router User Guide 



Instructions to connect
your New Gateway Router

Contents

- 1 GT784 Gateway Router
- 2 Before you begin
- 3 Router setup
- 4 Configuring Bridge Mode
- 5 The “Login” screen will appear
- 6 Advanced setup
- 7 Advanced setup screen will appear
- 8 The WAN IP setting page is displayed
- 9 The Thank You screen will appear and then disappear once the configuration is completed
- 10 You will be taken back to the Advanced Setup screen WAN IP setting page is displayed
- 11 The Utilities Reboot Gateway screen will appear
- 12 The DSL Gateway Reboot warning screen will appear instructing you to:
- 13 Getting connected
- 14 Documents / Resources
- 15 Related Posts

GT784 Gateway Router

The Verizon GT784 gateway/router is replacing your current 6110 Bridged device.

Please note: This process below should be followed only if you are attaching another piece of equipment (router/switch, etc) to this Verizon Gateway GT784.

If your existing set up requires the Verizon GT784 to be put in bridge mode, please follow these quick easy steps.

If you configure the Verizon GT784 in bridge mode, this will disable the wireless functionality.

Before you begin

Disconnect your existing Verizon modem/router including all cables and cords and any other equipment attached to the Verizon modem/router.

Router setup

Connecting your new gateway/router

A. Connect Yellow Ethernet cord from Ethernet port on PC or laptop to any of the 4 Ethernet ports on the back of the wireless router.

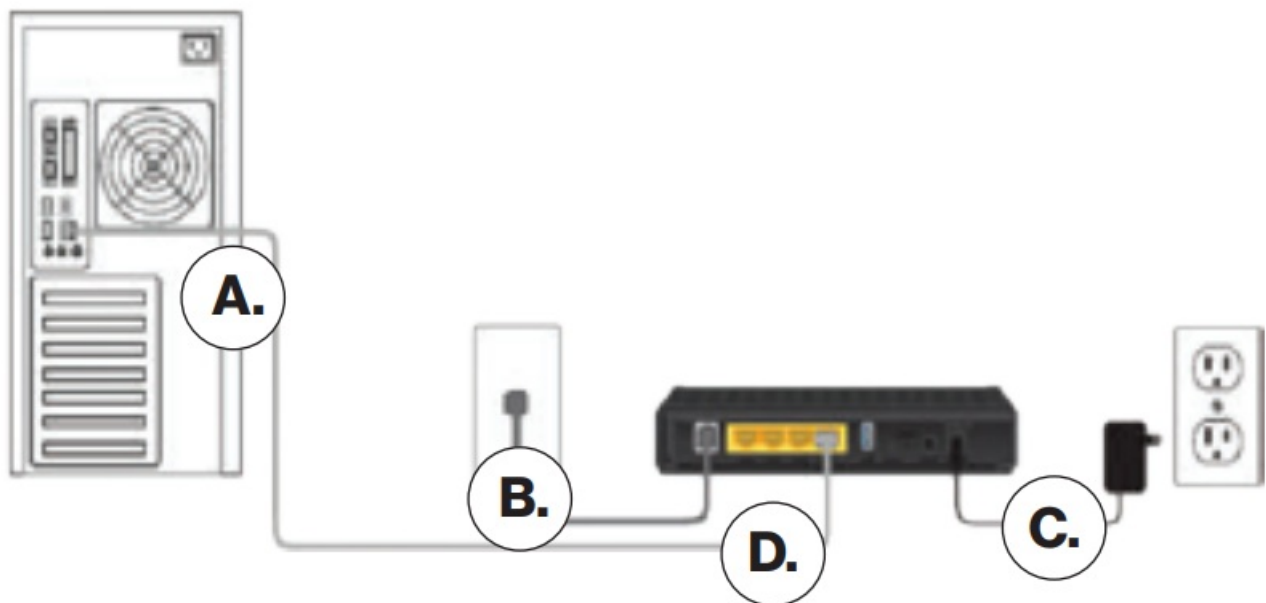
B. Connect phone line to phone jack and wireless router.

- Do not place a filter on phone line connected to the router.
- Use a 2-for-1 adapter if connecting a phone on the same jack.
- Make sure to place a filter on the line connected to the telephone.

C. Connect Power supply to router and plug into power outlet.

D. Turn router on using the power on/off switch.

Desktop Computer

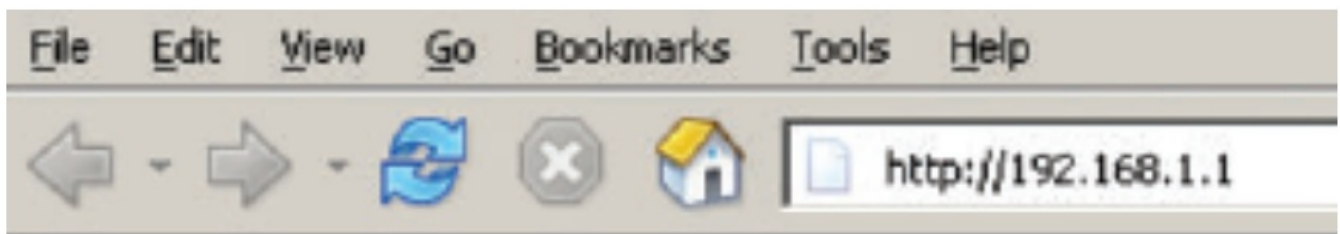


Configuring Bridge Mode

Logging in to the Verizon GT784

To access the Verizon GT784, enter the following gateway address into the browser address line:

<http://192.168.1.1>.

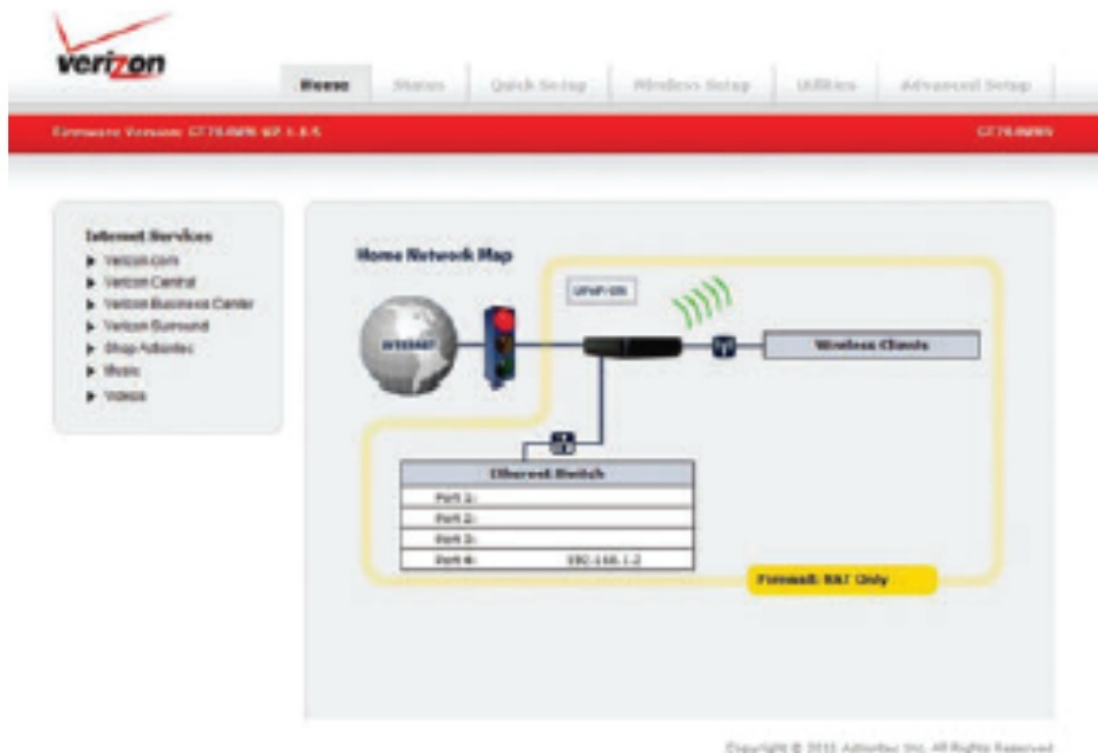


The “Login” screen will appear

- Create and enter a new password for the Verizon GT784.
- “Re-type the New Password” in the appropriate field.
- Make sure to write the password down on a piece of paper and keep it in a safe place for future reference.
- Select your local time zone from the “Time Zone” dropdown list.
- Click Apply.

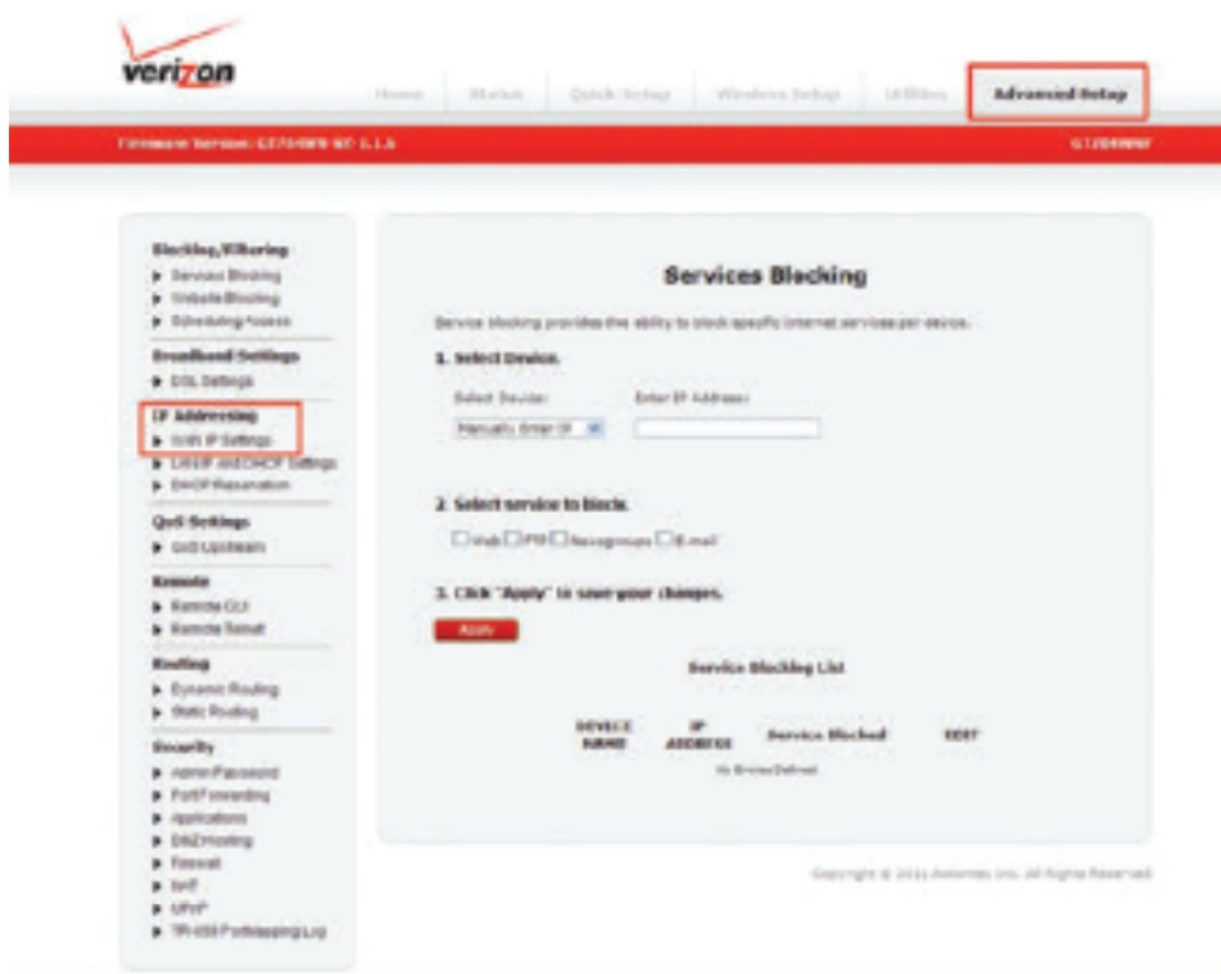
Advanced setup

- After the changes are applied, the Verizon GT784 Home screen will appear.
- Click on the Advanced Setup tab located at the top of the screen.



Advanced setup screen will appear

- Click on "WAN IP Settings" located under "IP Addressing."



The WAN IP setting page is displayed

- Under option 1, select the field next to RFC 1483 Transparent Bridging.
- Click Apply.

verizon

Home | Status | Quick Setup | Wireless Setup | Settings | **Advanced Setup**

Home Gateway Settings or ADVANCED

Blocking/Firewalling

- ▶ Block/Unblock
- ▶ Unblock Blocking
- ▶ Scheduling Access

Broadband Settings

- ▶ DSL Settings

IP Addressing

- ▶ WAN IP Settings
- ▶ LAN IP and DHCP Settings
- ▶ DHCP Reservation

QoS Settings

- ▶ QoS Upstream

Network

- ▶ Remote GUI
- ▶ Remote Tablet

Routing

- ▶ Dynamic Routing
- ▶ Static Routing

Security

- ▶ Admin Password
- ▶ Port Forwarding
- ▶ Applications
- ▶ DoS/DoS
- ▶ Firewall
- ▶ NAT
- ▶ LAN IP
- ▶ WebUI Port Mapping Log

WAN IP Settings

WAN IP Addressing sets the protocol used by your ISP for Internet access.

1. Select the ISP protocol below.

- ☐ Static
- ☒ **RFC 1483 Transparent Bridging**
- ☐ RFC 1483 via DHCP
- ☐ RFC 1483 via Static IP

2. Enter your ISP username and password.

ISP Username:

ISP Password:

☐ My ISP does not require a username and password.

3. Select the IP Type.

- ☐ Dynamic IP (DHCP) (Default)
- ☐ Single Static IP Address
 - Single Static IP:
- ☐ Multiple Static IP Addresses
 - Gateway Address:
 - Subnet Mask:
 - ☐ Enable Public/Private IP Addressing

4. Select the DNS type.

- ☐ Dynamic DNS Address (Default)
- ☐ Static DNS Address
 - Primary DNS:
 - Secondary DNS:

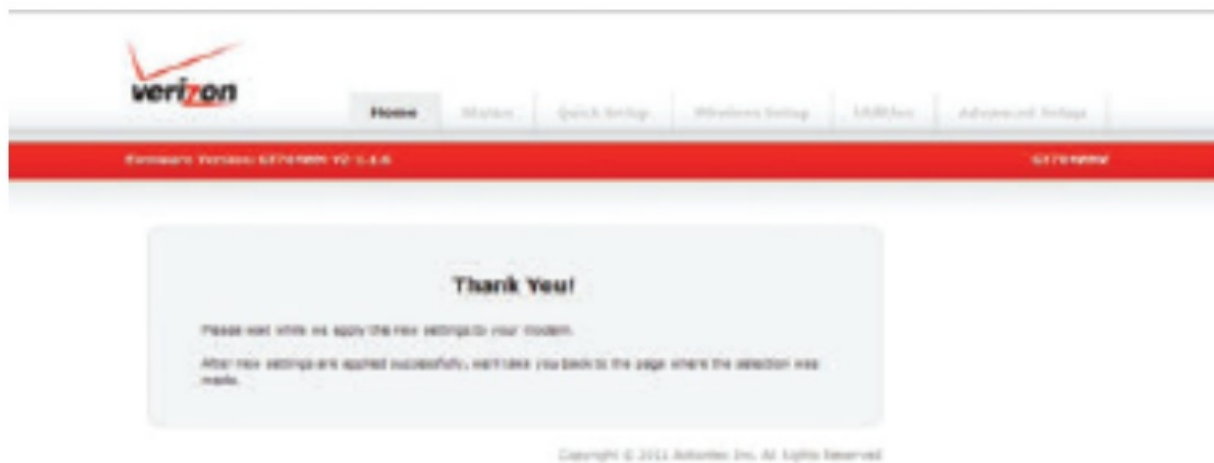
5. Configure IGMP Proxy.

- ☐ Enable
- ☒ **Disable**

6. (Click "Apply" to save your changes.

Apply

The Thank You screen will appear and then disappear once the configuration is completed



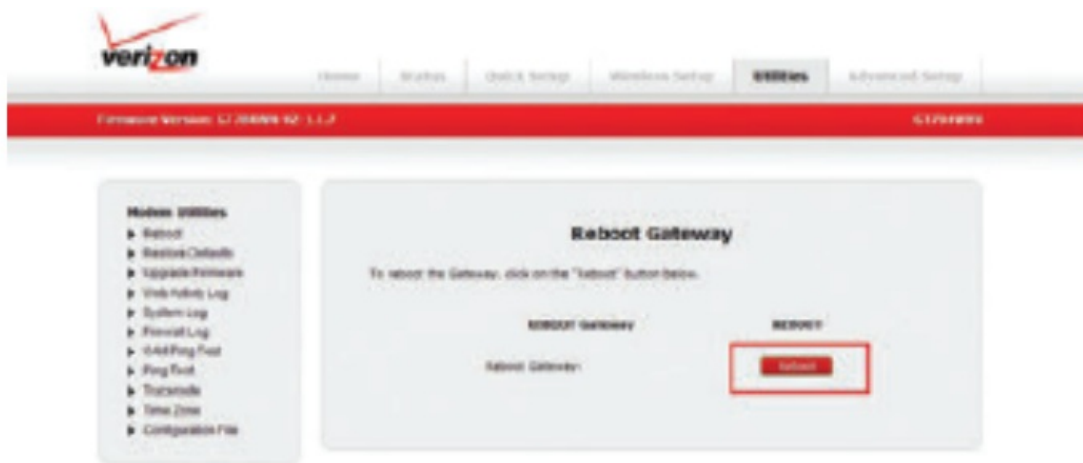
You will be taken back to the Advanced Setup screen WAN IP setting page is displayed

- Click on the Utilities Tab.



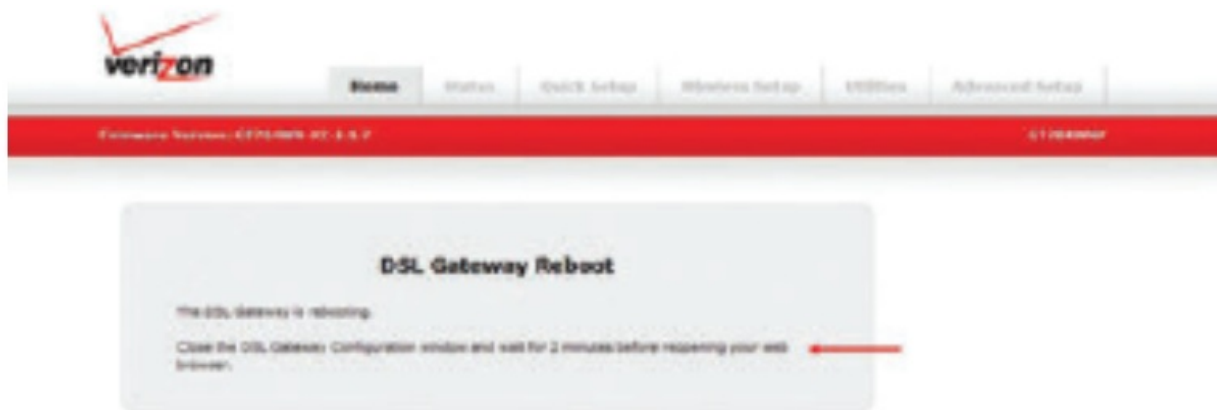
The Utilities Reboot Gateway screen will appear

- Click on Reboot.
- If the Reboot screen does not appear, please reboot the gateway manually by turning it OFF and then ON.



The DSL Gateway Reboot warning screen will appear instructing you to:

- Close the DSL Gateway Configuration window by closing your browser.
- Wait 2 minutes for the full configuration to



Getting connected

Important reminders about operating your Verizon GT784 gateway in Bridge Mode:

Once you have completed configuring your Gateway to Bridge Mode it becomes a pass through device and will no longer function as a router.

All Wireless functionality has been disabled and you will no longer be able to access the Gateway GUI Interface (192.168.1.1).

To restore all router and wireless functionality a factory reset of the Gateway will be required. To perform this function, hold in the reset button on the back of the gateway for at least 20 seconds.

- Should you choose to use your gateway as a wireless router there are a few important facts and benefits you should know:

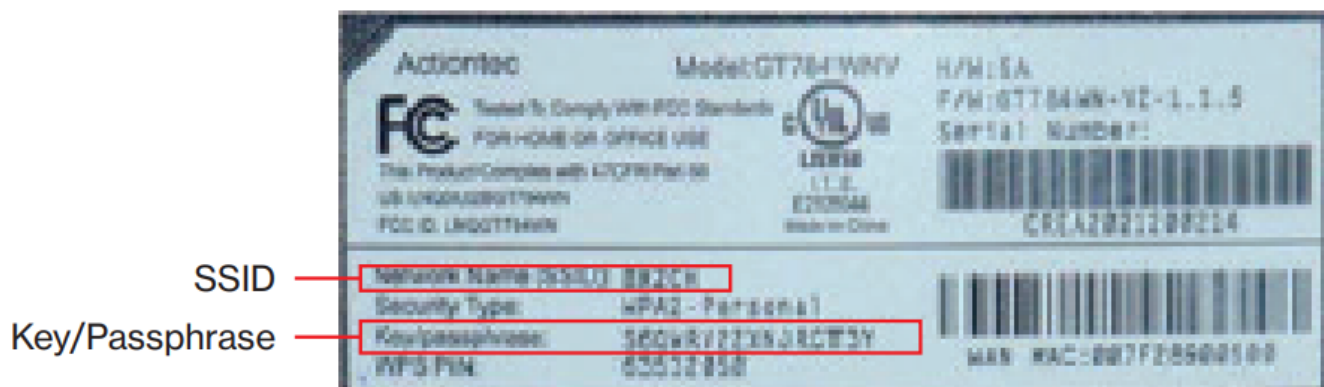
The Verizon GT784 is one of Verizon's advanced wireless 802.11N capable routers.

- You can connect up to 4 wired devices; if currently using a 3rd party, non-Verizon router you can now eliminate it and use your new Verizon router for all of your internet needs.
- The wireless 802.11N technology delivers faster wireless speeds with improved WiFi and more memory and processing power.
- It Delivers a more secure wireless connection using WPA/WPA2 wireless security
- All wireless devices connecting to the Verizon GT784 must support WPA/WPA2 in order to connect.
- WPA/WPA2 is not backward compatible with the less secure WEP wireless security

- It is recommended that all wireless devices be upgraded to support the more secure WPA/WPA2 wireless security.
- If unable to upgrade the wireless device to WPA/WPA2, the router must be re-configured to the less Secure WEP wireless security in order to connect all wireless devices.

If replacing an existing wireless device you will need to establish a new wireless connection to your new wireless device; your old connection will no longer work.

The Network Name (SSID) and Key/Passphrase are located on the sticker which is located on the back of the modem.



Still need help connecting to the Internet?

Power OFF the Verizon GT784 and any other router you may have connected to it, wait 30 seconds, turn back on. Also, ensure there is not a filter between the gateway and the phone jack.

Need additional assistance?

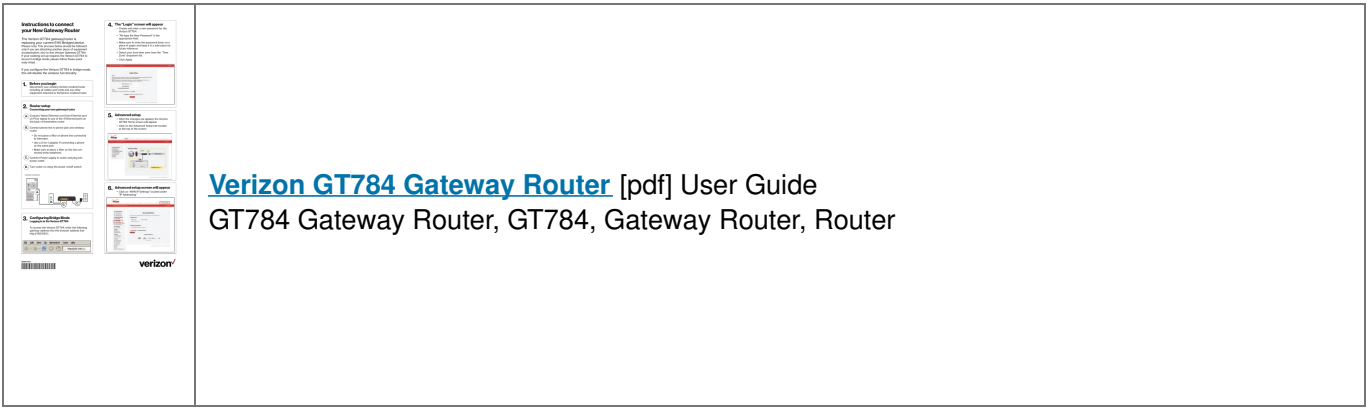
Visit [verizon.com/help](https://www.verizon.com/help) or contact technical support at 1.888.649.9500.

VZUG0560222

REPINST6110



Documents / Resources



[Verizon GT784 Gateway Router](#) [pdf] User Guide
GT784 Gateway Router, GT784, Gateway Router, Router