



veradek Privacy Screen Two Panel-Three Panel Screen Set Instructions

[Home](#) » [veradek](#) » veradek Privacy Screen Two Panel-Three Panel Screen Set Instructions 

Contents

- [1 veradek Privacy Screen Two Panel-Three Panel Screen Set](#)
- [2 Product Information](#)
- [3 Components](#)
- [4 Parts](#)
- [5 About the privacy screen series](#)
- [6 Documents / Resources](#)
- [7 Related Posts](#)

veradek — outdoor

veradek Privacy Screen Two Panel-Three Panel Screen Set



Product Information

The Privacy Screen Two Panel/Three Panel Screen Set is a modern and modular solution for creating breathtaking outdoor spaces while adding essential privacy to your property. The screen set is made from durable galvanized steel or Corten steel and is available in 8 beautiful and unique patterns with various privacy ratings. The set includes 2 or 3 screen panels, 2 top sidebars, 2 bottom sidebars, 2 stand feet, and all required screws, hex nuts, and an Allen key for assembly.

Components

The assembly instructions apply to ALL 2 and 3 panel Privacy Screen sets. The following components are not included and need to be purchased separately:

- 24x Screw
- 24x Hex Nut
- 1x Allen Key
- Adjustable Wrench
- Soft Working Surface

The following parts and components are included in the set:

- 2x Bottom Sidebar
- 2x Top Sidebar
- 2/3x Screen Panel
- 2x Stand Feet



24x
Screw

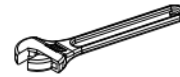


24x
Hex Nut



1x
Allen Key

Not Included



Adjustable
Wrench



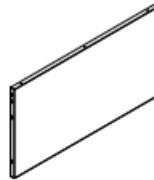
Soft
Working
Surface



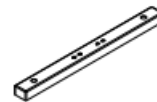
2x
Bottom
Sidebar



2x
Top
Sidebar



2/3x
Screen
Panel



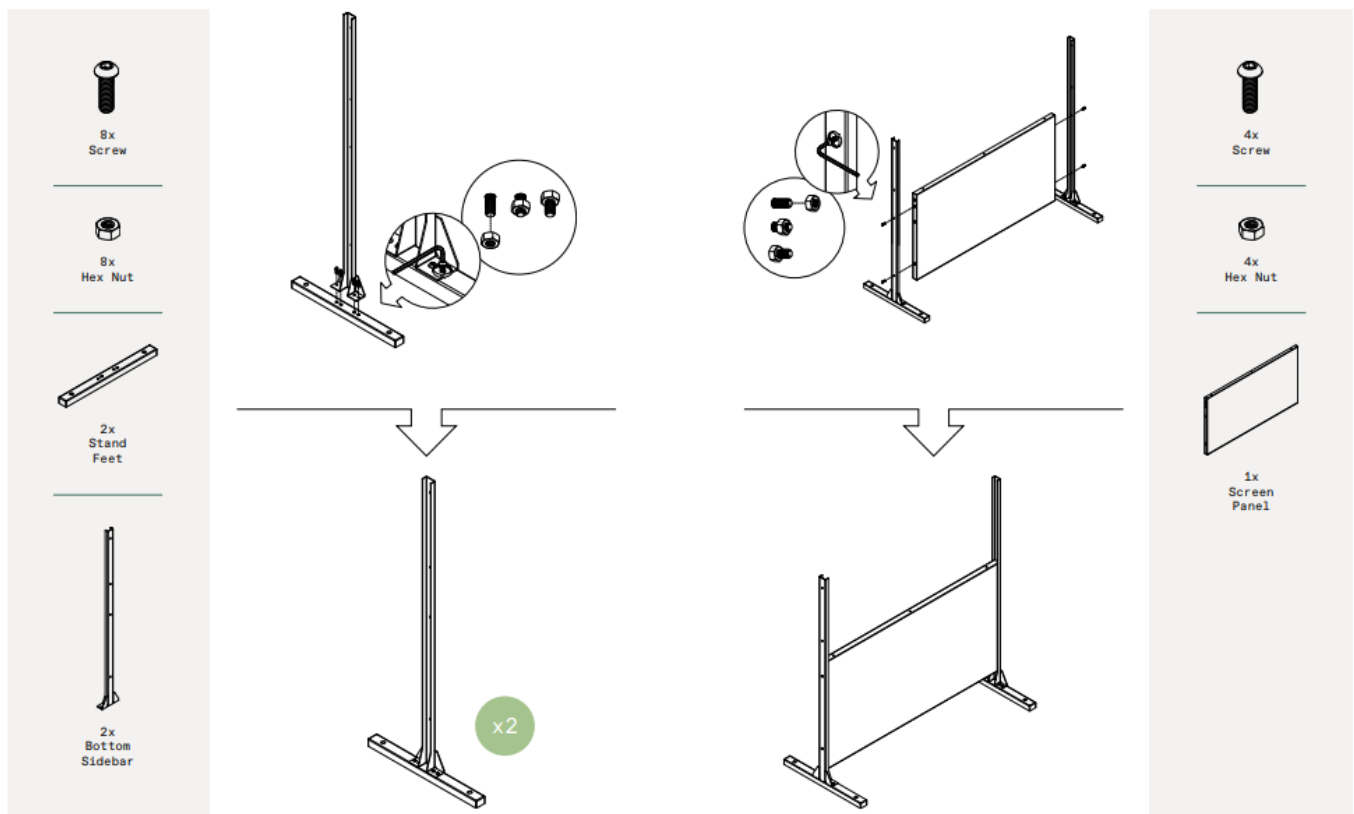
2x
Stand
Feet

Although the Flowleaf pattern is shown, these assembly instructions apply to ALL 2 and 3 panel Privacy Screen sets.

Parts

Part A: Attach the 2 Stand Feet to the 2 Bottom Sidebars using 8 screws and 8 hex nuts provided.

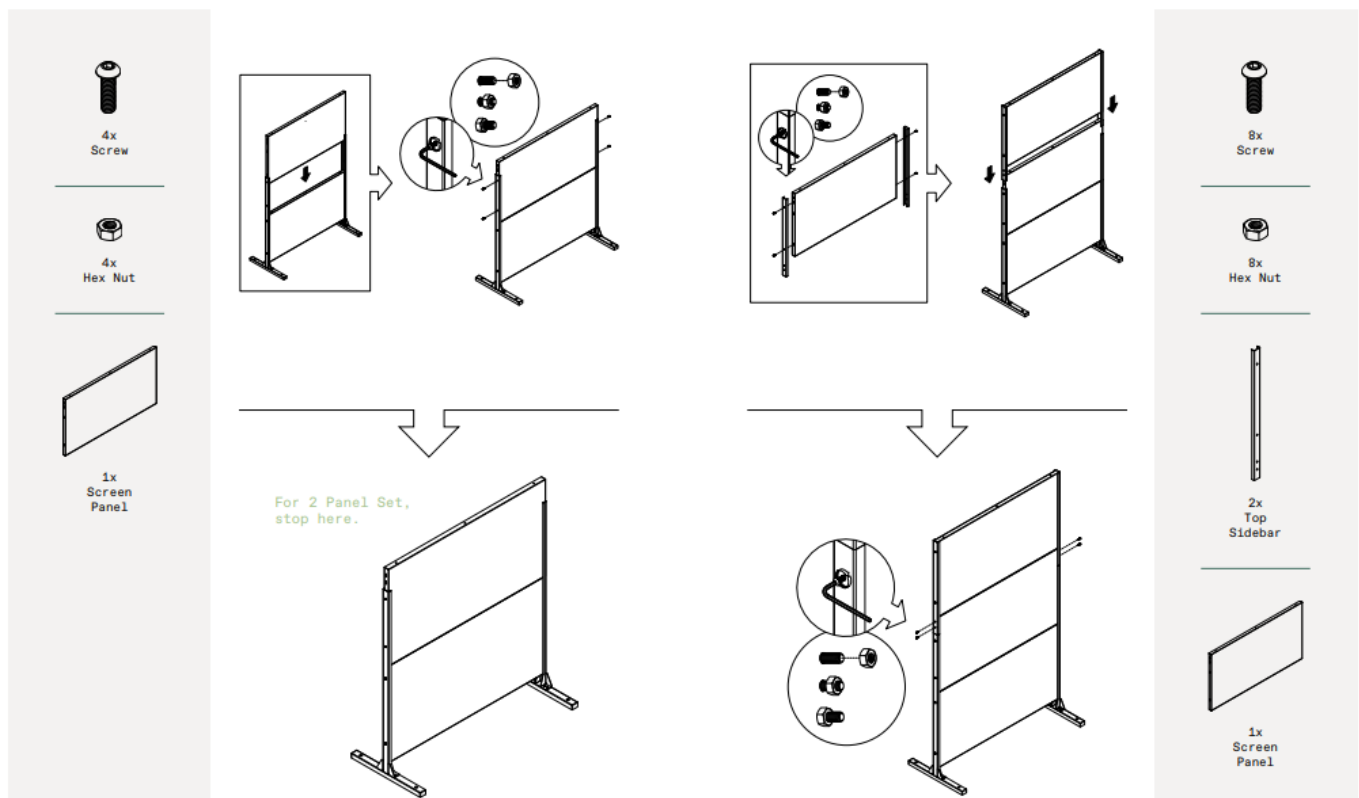
Part B: Attach one Screen Panel to one Bottom Sidebar using 4 screws and 4 hex nuts provided.



Part C: Attach the second Screen Panel to the other Bottom Sidebar using 4 screws and 4 hex nuts provided.

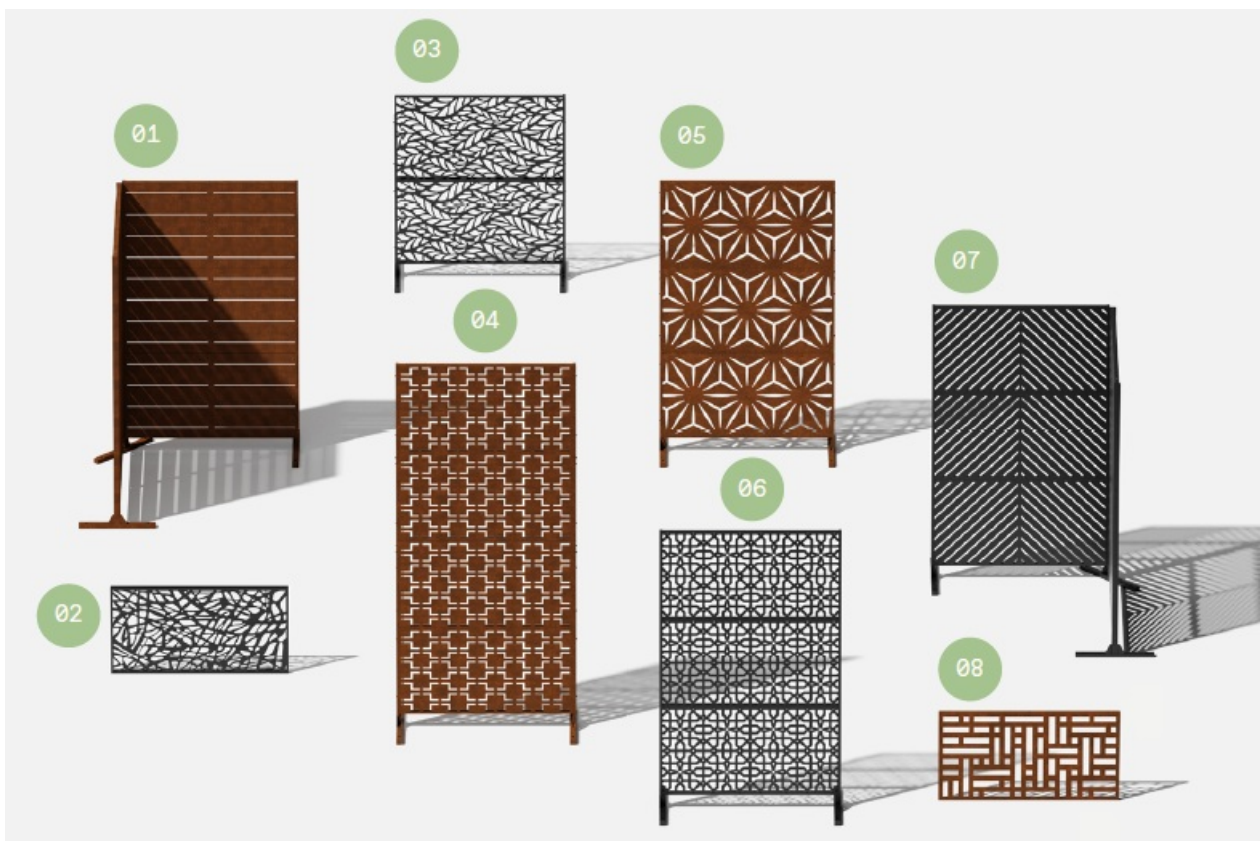
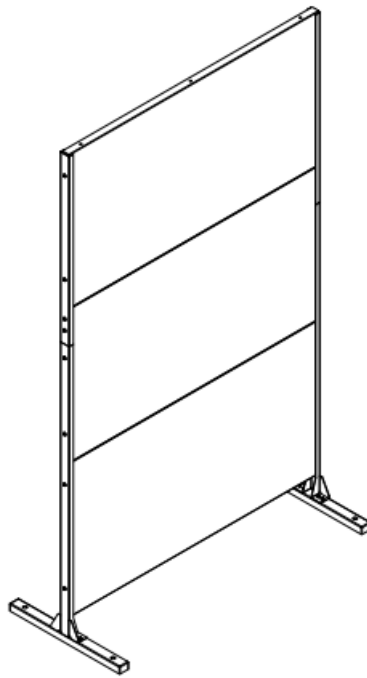
For 2 Panel Set, Stop Here: If you are assembling a 2 Panel Set, your Privacy Screen is now ready to use.

Part D: Attach the 2 Top Sidebars to the Screen Panels using 8 screws and 8 hex nuts provided.



Attach the third Screen Panel to the Top Sidebars using 4 screws and 4 hex nuts provided.

Complete



1. Linear Corner Screen
2. Web Panel
3. Flowleaf Two Panel
4. Quadra Four Panel
5. Star Three Panel
6. Parilla Three Panel
7. Arrow Corner Screen
8. Blocks Panel

About the privacy screen series

No one wants an audience as they soak in the hot tub after a long week. Veradek Outdoor Privacy Screens are the perfect solution for creating breathtaking spaces while adding essential privacy to your property. Made from durable galvanized steel or Corten steel, our Privacy Screens are modern, modular, and easy to assemble without the need for permanent anchoring! Available in 8 beautiful, unique patterns and various privacy ratings, there's a Privacy Screen to suit your unique style!

Questions? Email info@veradek.com

Documents / Resources

	<p>veradek Privacy Screen Two Panel-Three Panel Screen Set [pdf] Instructions</p> <p>Privacy Screen Two Panel-Three Panel Screen Set, Screen Two Panel-Three Panel Screen Set , Two Panel-Three Panel Screen Set, Panel-Three Panel Screen Set, Panel Screen Set, Scree n Set, Set</p>
---	--