



## VELUX KLC 410 Control Unit Instructions

[Home](#) » [VELUX](#) » VELUX KLC 410 Control Unit Instructions 

### Contents

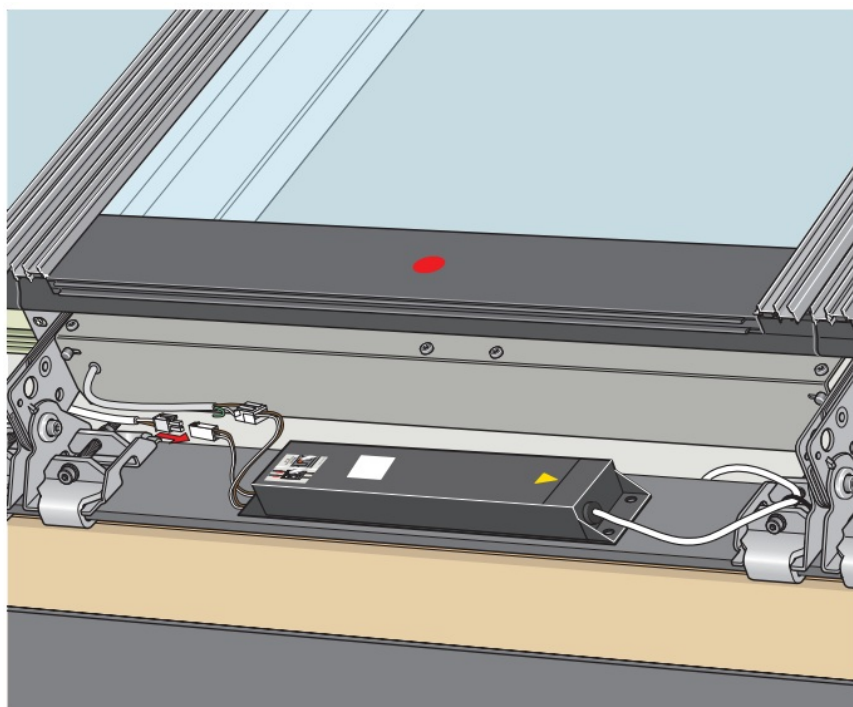
- [1 VELUX KLC 410 Control Unit](#)
- [2 Instructions for control unit](#)
- [3 Control unit](#)
- [4 Safety](#)
- [5 Function](#)
- [6 Product](#)
- [7 Maintenance and service](#)
- [8 Documents / Resources](#)
  - [8.1 References](#)
- [9 Related Posts](#)

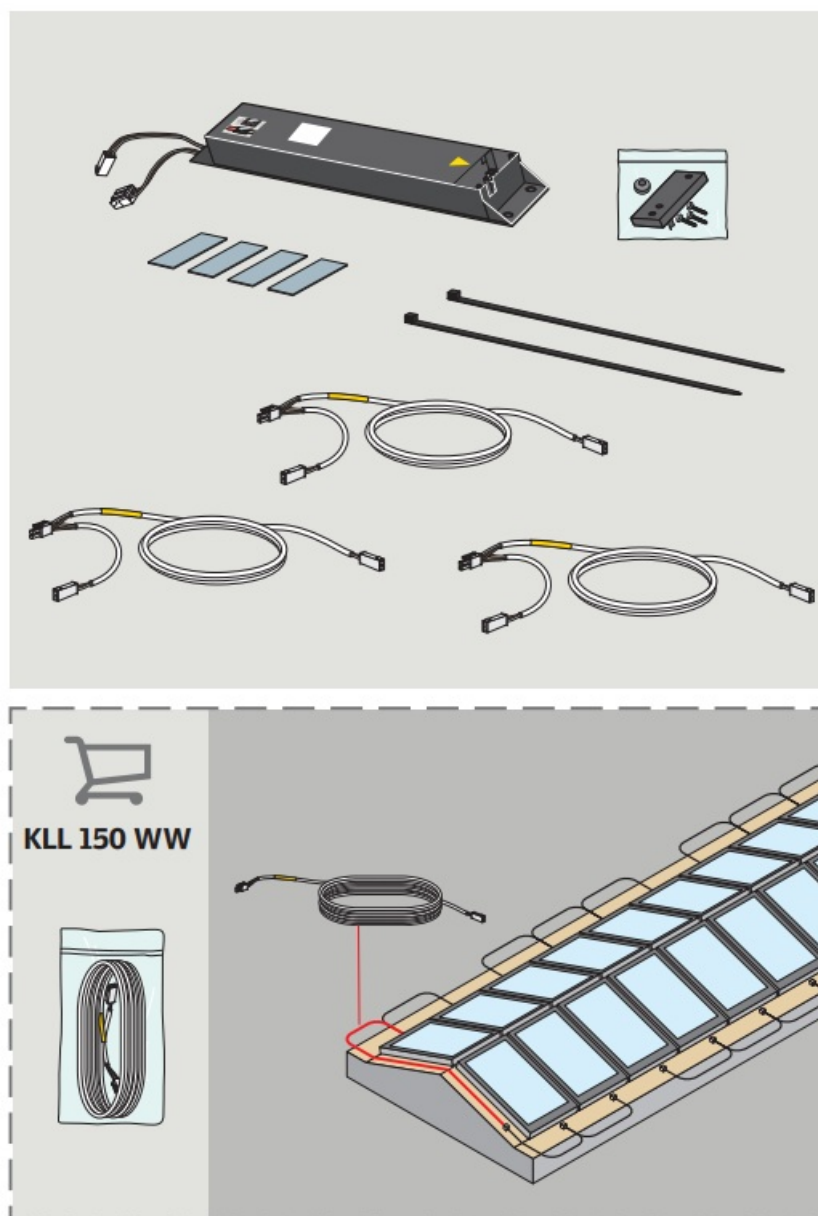


**VELUX KLC 410 Control Unit**

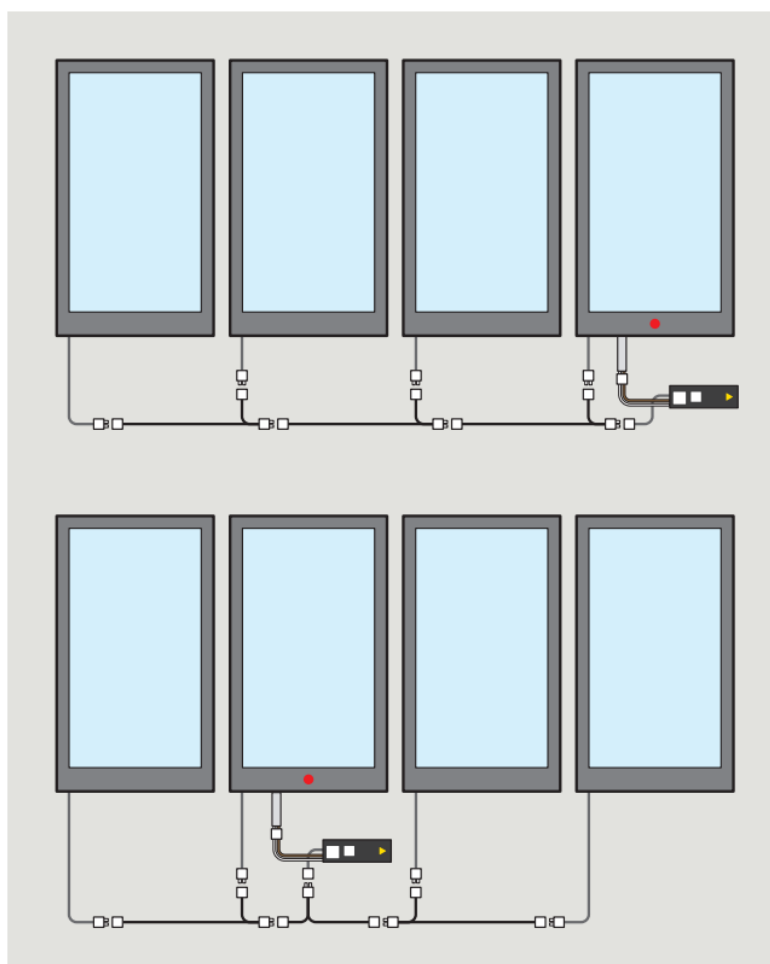


### Instructions for control unit

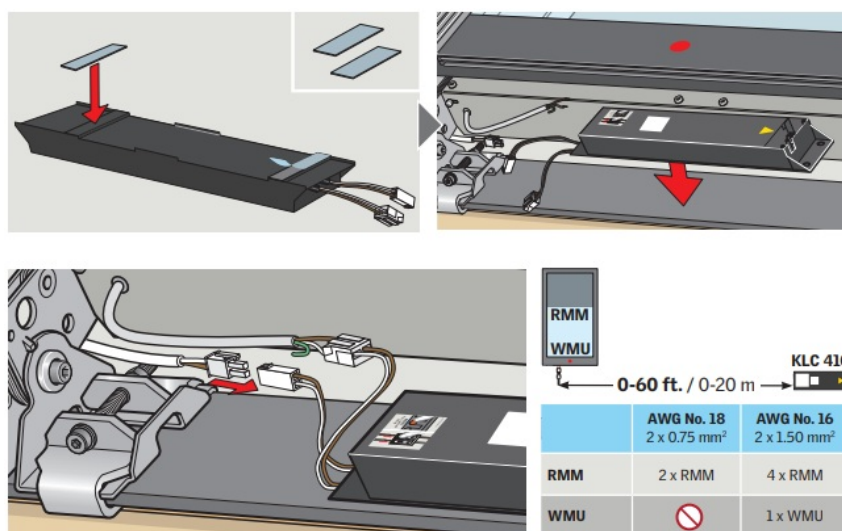




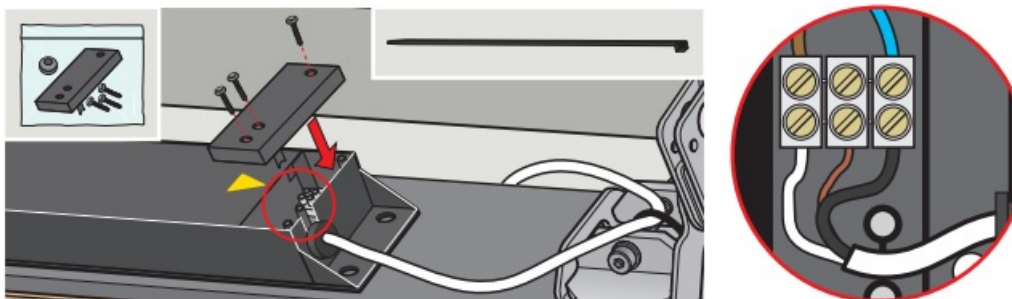
Note: You can connect max one chain actuator and four roller blinds to one control unit KLC 410.



Fit control unit KLC 410 and connect cables to chain actuator WMU/roller blind RMM. Note: When extending the cable (up to max 60 ft/20 m) between control unit KLC 410 and chain actuator WMU/roller blind RMM, the cable dimensions in the table must be observed.

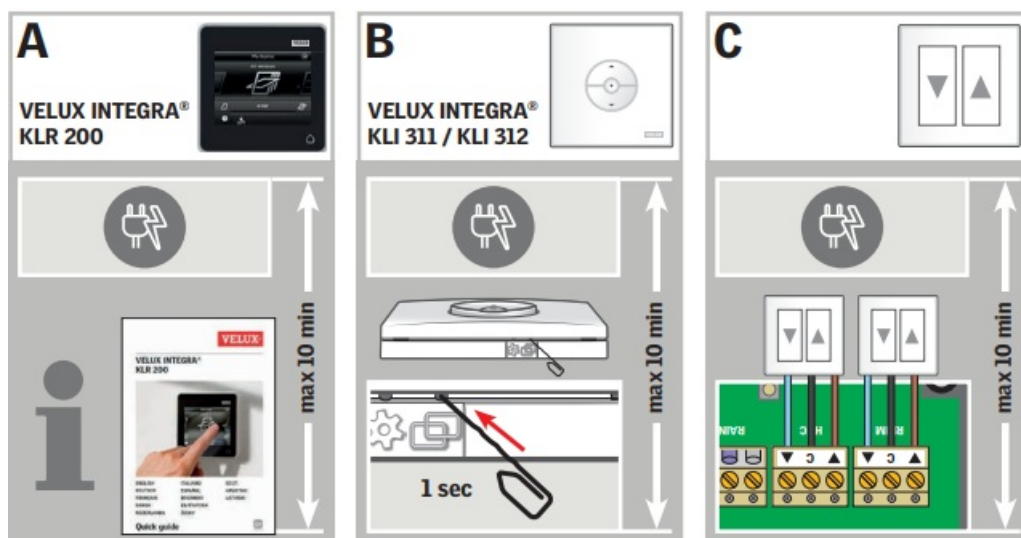


Fit cable between KLC 410 and power outlet. Note: Control unit KLC 410 must not be connected to the mains supply until the installation of the chain actuator and roller blinds is completed and they are ready for registration in the control (see next page). It is the installer's responsibility to choose the correct type of power cable and make the installation according to the national building code and best practices.

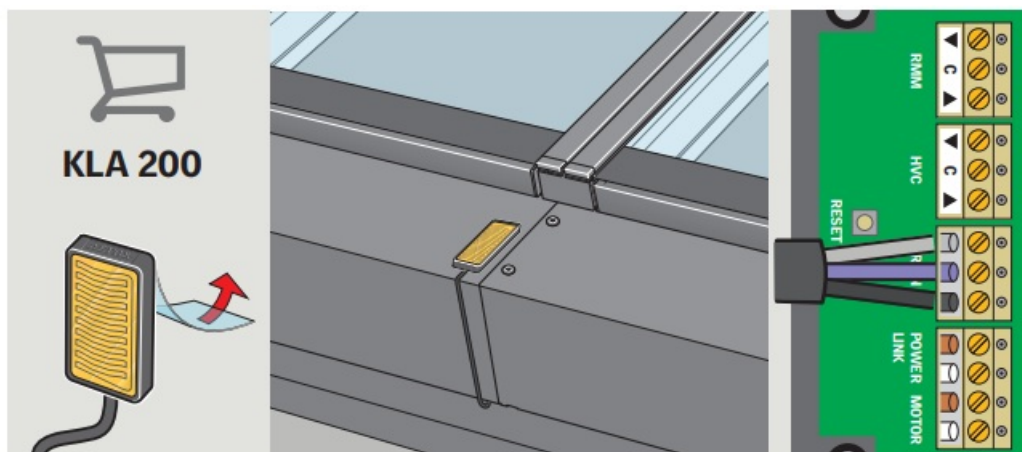


Once control unit KLC 410 has been connected to the mains supply, registration of chain actuator/roller blind must take place within 10 min. If the registration of the chain actuator/ roller blind does not take place within 10 min, disconnect the power from the control unit and then reconnect it.

1. An Operation with control A (control pad KLR 200): Connect KLC 410 to the mains supply. See the instructions enclosed with a control pad.
2. Operation with control B (wall switch KLI 311/312): Connect the plug of KLC 410 to a mains supply and press the PAIR button on the wall switch for 1 sec with a pointed object.
3. Operation with control C (potential-free switch): Connect the plug of KLC 410 to the mains supply and press the OPEN/UP or DOWN/ CLOSE button.

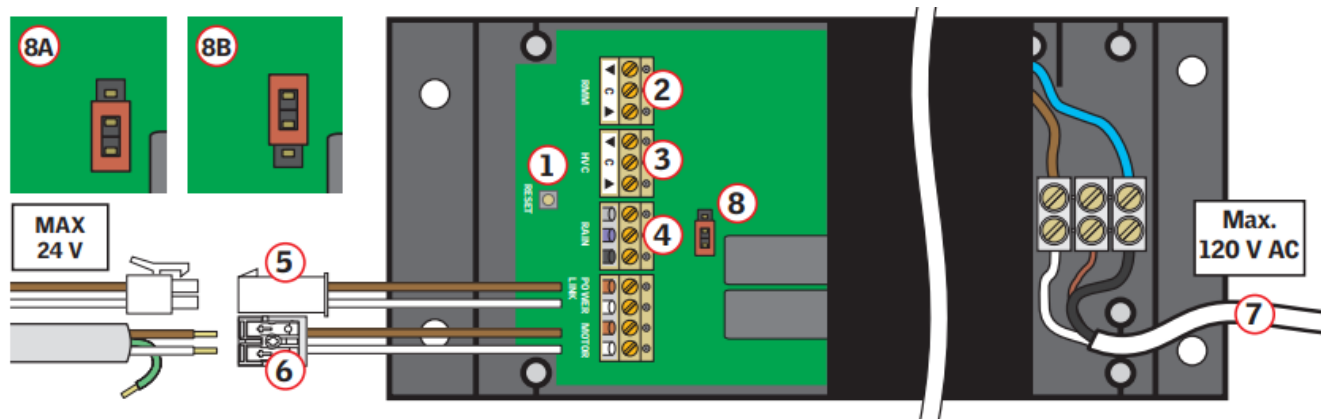


Connect rain sensor KLA 200 to control unit KLC 410. Note: Make sure that the colors match as shown. The cable for the rain sensor can be extended up to 90 ft./30 m with a min AWG no. 20/0.5 mm<sup>2</sup> cable.



**Control unit**

1. RESET button for registration of control or potential-free switch
  2. Potential-free entry for roller blinds
  3. Potential-free entry for chain actuator
  4. Entry for rain sensor KLA 200
  5. Plug connector for roller blinds
  6. Plug connector for chain actuator
  7. 120 V AC, consumption max 175 W
  8. Jumper for compulsory chain actuator detection potential-free connection and function
- Function of entries  
 open/UP is controlled by connecting C and . CLOSE/DOWN is controlled by connecting C and . STOP is controlled by connecting C with both and .



## IMPORTANT

### Electrical connection

It is the customer's responsibility:

- To contact a qualified electrical installer.
- To assure that the electrical installation is adequate and in conformity with National Electrical Code, ANSI/NFPA 70 – latest edition\*, and all local codes and ordinances. Failure to do so could result in fire, electrical shock, other serious personal injury or death.
- Do not connect power to the VELUX INTEGRA® control unit KLC 410 until the installation of the Modular Skylight and roller blinds is completed and they are ready for registration in-wall switch KLI 311/312 or in a potential-free switch. See page 5.
- Disconnect power to the Modular Skylight during installation to prevent the skylight from opening or closing suddenly and uncontrollably.

### Electrical Shock Hazard

- The VELUX INTEGRA® control unit KLC 410 is a class I product.
- Disconnect power to the control unit before servicing the skylight.
- Do not have a fuse in the neutral circuit. This could result in a fire, electrical shock or another personal injury.
- Do not install the control unit and the Modular Skylight in a location or at a height where unsupervised children may be present.
- Always switch off power to the control unit at the service panel when connecting the control unit, when connecting the skylight, when installing accessories and whenever the control unit cover is removed.

- On suspicion of malfunction, switch off power and call for service.

## Safety

- The skylight can when connected to the control unit be used by persons (aged 8 years and above) with sufficient experience and knowledge if they have been given instruction concerning its safe use and understand the hazards involved. Cleaning and user maintenance must not be made by unsupervised children.
- Children must not play with the skylight and its electrical products. The control should be kept out of reach of children. Do not allow children near an open skylight.
- Before operating ensure that the skylight with electrical products can be operated without risk of damage to property or injury to people or animals.
- For personal safety, never have your head, hand, arm or any other body part out of or through the opening of the skylight without first having switched off the power.
- If repair or adjustment work is needed, disconnect power and ensure that it cannot be reconnected unintentionally.
- It is recommended that a control be placed in the room where the skylight and its electrical products have been installed.
- Control unit : FCC ID: XSG832644 and IC ID 8642A-832644.
- This device complies with part 15 of the FCC and RSS-210 of the IC rules. Operation is subject to the following two conditions: (1) This device may not cause harmful interference, and (2) this device must accept any interference received, including interference that may cause undesired operation.
- This device has been tested and found to comply with the limits for a Class B digital device, pursuant to part 15 of the FCC Rules. These limits are
  - designed to provide reasonable protection against harmful interference in a residential installation.
- This device generates, uses, and can radiate radio frequency energy and, if not installed and used in accordance with the instructions, may cause harmful interference to radio communications. However, there is no guarantee that interference will not occur in a particular installation. If this device does cause harmful interference to radio or television reception, which can be determined by turning the device off and on, the user is encouraged to try to correct the interference by one or more of the following measures:
  - Reorient or relocate the receiving antenna.
  - Increase the separation between the device and receiver.
  - Connect the device into an outlet on a circuit different from that to which the receiver is connected.
  - Consult the dealer or an experienced radio/TV technician for help.Changes or modifications not expressly approved by the party responsible for compliance could void the user's authority to operate the device.
- FCC Radiation Exposure Statement: This device complies with FCC RF radiation exposure limits set forth for an uncontrolled environment
- The term "IC:" before the device certification number signifies that the Industry Canada technical specifications were met.

## Function

- If a connected rain sensor gets wet, the skylight automatically closes.



- Disabling the rain sensor while the skylight is open creates a risk of water to the interior of the building.
- If the rain sensor is activated, the skylight will close within approximately 40 seconds. If the skylight is activated with the control, it will take up to one minute until the skylight is completely closed. Therefore, in case of sudden rain, water may enter the room before the skylight is closed.
- In case of snow and/or ice, the operation of the skylight may be blocked resulting in damage to the skylight.

## **Product**

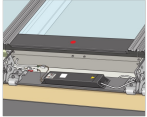
- The control unit has been designed for use with chain actuators WMU 88V 2A in combination with VELUX Modular Skylights, VELUX roller blinds RMM and VELUX rain sensor KLA 200.
- The control unit can control one chain actuator WMU 88V 2A and up to four roller blinds RMM at a time. Connection to or use with other products may cause damage, malfunction or injury.
- Electrical products must be disposed of in conformity with all local codes, ordinances, rules and regulations for electronic waste and not with household waste.
- The packaging can be disposed of with usual household waste.
- Radio frequency band: 2.4 GHz.
- Radio frequency range: 110 yards (100 m) free field. Depending on building construction, the indoor range is approx 90 ft (30 m). However, constructions with reinforced concrete, metal ceilings and plaster walls with steel members may reduce the range.

## **Maintenance and service**

- Disconnect power before carrying out any maintenance, repair, adjustment or service work to the skylight or products connected to it and ensure that it cannot be reconnected unintentionally.
- Maintenance and installation must be carried out in consideration of Health and Safety at Work requirements.
- There are no serviceable parts inside the control unit.
- It is recommended to carry out at least one functional test annually to ensure that all moving parts of the skylight and/or products connected to it are fully functional and not influenced by wear or corrosion.
- If the mains cable or any other cable is damaged, it must be replaced by qualified personnel in accordance with national regulations.
- It is recommended that VELUX service engineers carry out any repair work to the VELUX skylight or VELUX electrical components.
- If you have any technical questions, please contact your VELUX sales company, see the telephone list or [www.velux.com](http://www.velux.com). \* National Fire Protection Association, Batterymarch Park, Quincy Massachusetts 02269.

## **Documents / Resources**



 <p>VELUX INTEGRA® KLC 410</p> <p>VELUX</p>	<p><a href="#">VELUX KLC 410 Control Unit</a> [pdf] Instructions 832644, XSG832644, KLC 410 Control Unit, KLC 410, Control Unit</p>
--	---

References

- [Somfy's Technologies & Compatibilities | Connect Your Home | Somfy](#)
- [VELUX The VELUX Group promotes better living with daylight and fresh air.](#)