

VELUX®

VELUX FHC
Energy Efficient
Blinds



VELUX FHC Energy Efficient Blinds Installation Guide

[Home](#) » [VELUX](#) » VELUX FHC Energy Efficient Blinds Installation Guide 

Contents

- [1 VELUX FHC Energy Efficient Blinds](#)
- [2 Product Information](#)
- [3 Installation](#)
- [4 Documents / Resources](#)
 - [4.1 References](#)
- [5 Related Posts](#)



VELUX FHC Energy Efficient Blinds



Specifications

- Product Name: FHC/FHL
- Model Number: VAS 453904-2024-08
- Compliance: EN 14351-1:2006+A1:2010

Product Information

Installation

1. Ensure you have all the necessary tools and hardware for installation.
2. Follow the step-by-step instructions provided in the user manual for proper installation.
3. If you encounter any difficulties during installation, contact customer support for assistance.

Operation

1. To open the ventilation system, use the control mechanism provided with smooth and gentle movements.
2. Adjust the light control settings as needed to regulate the amount of natural light entering the room.
3. Regularly clean and maintain the product to ensure optimal performance over time.

Maintenance

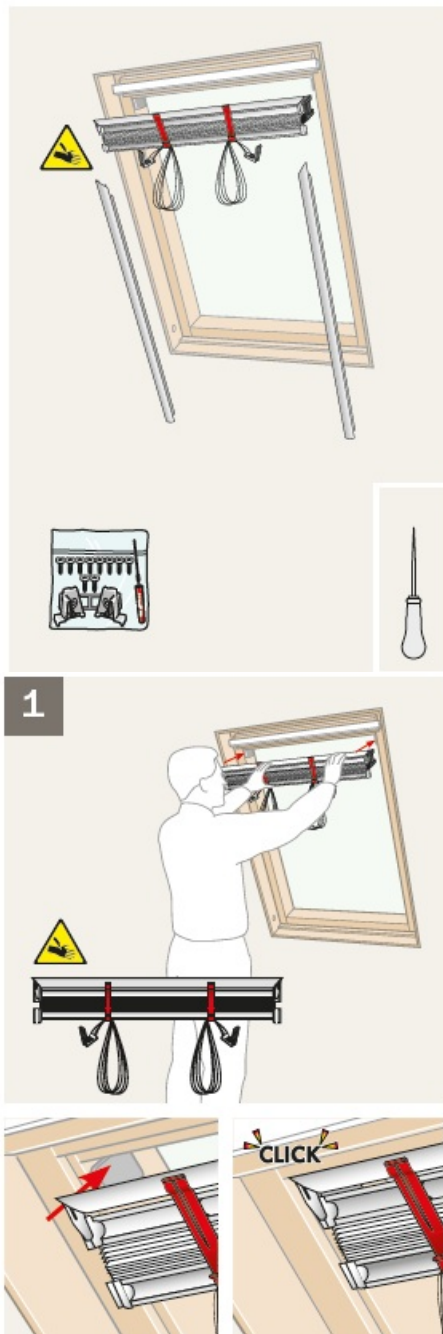
1. Clean the product surface with a soft, damp cloth to remove dust and debris.
2. Inspect the ventilation and light control mechanisms regularly for any signs of wear or damage.
3. Replace any worn-out parts promptly to maintain the product's functionality.

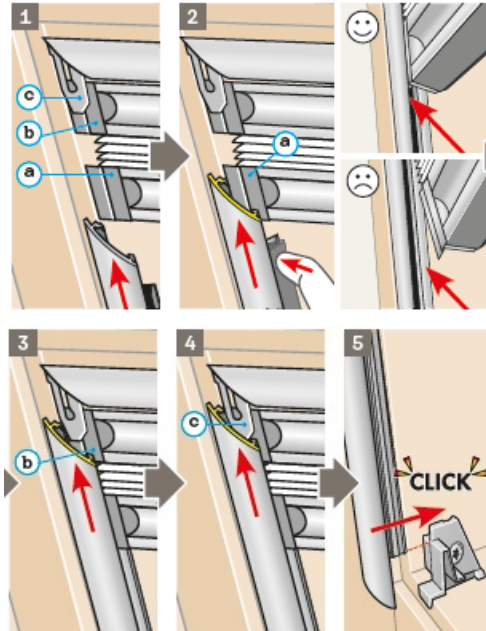
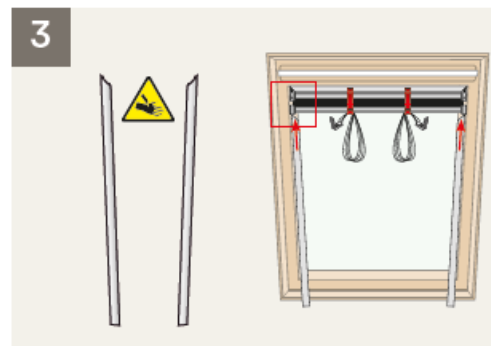
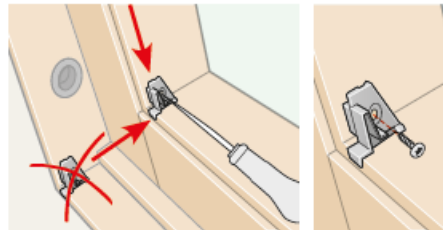
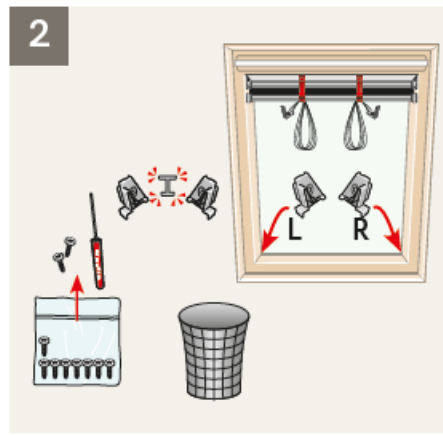
FAQ:

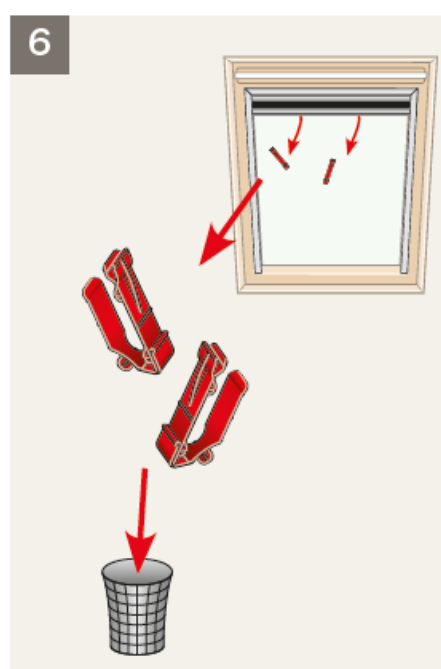
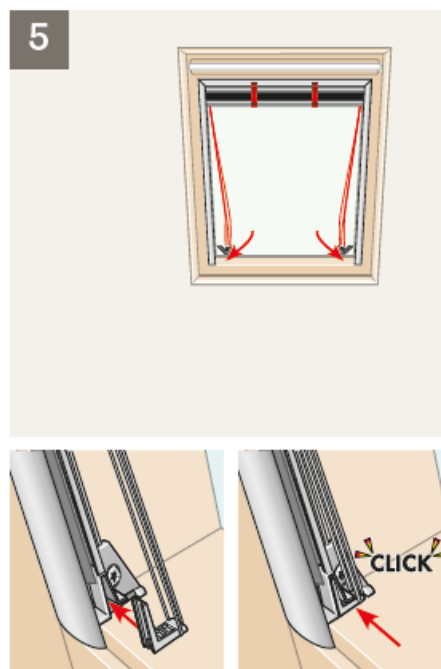
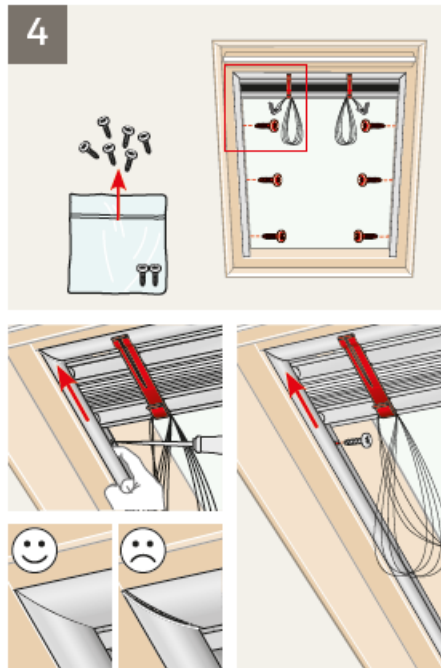
Q: How do I contact customer support for assistance?

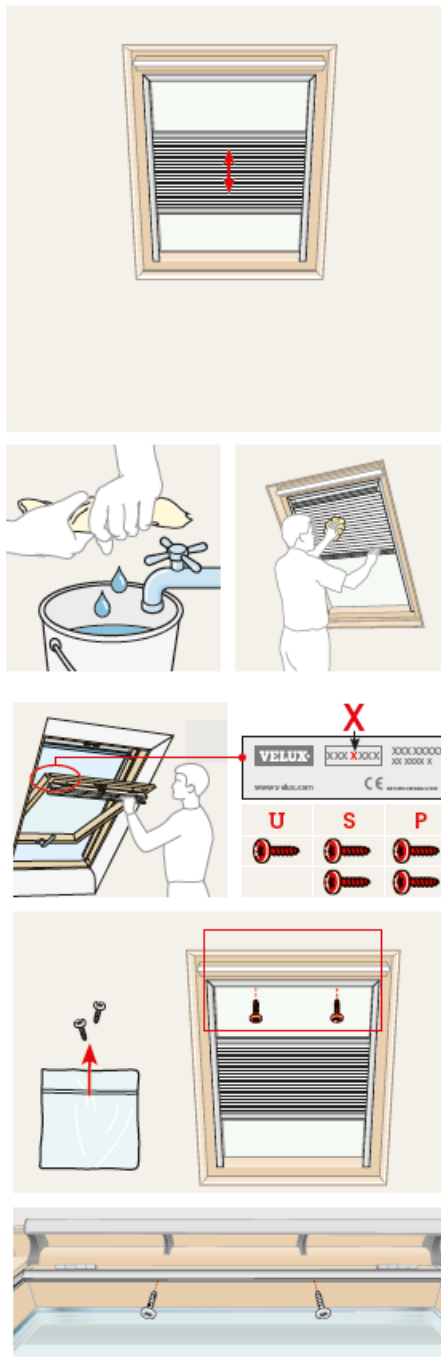
A: You can find the contact information for customer support specific to your region on the product label or visit the official website at www.velux.com for more details.

Installation









VELUX Company Ltd. 01592 778 225

www.velux.com

INSTALLATION INSTRUCTIONS FOR FHC/FHL. ©2015, 2024 VELUX GROUP

® VELUX AND THE VELUX LOGO ARE REGISTERED TRADEMARKS USED UNDER LICENCE BY THE VELUX GROUP

Documents / Resources



[VELUX FHC Energy Efficient Blinds](#) [pdf] Installation Guide

VAS 453904-2024-08, 452800-2011-XX, FHC Energy Efficient Blinds, FHC, Energy Efficient Blinds, Efficient Blinds, Blinds

References

- [VELUX Group - better living for people. Using daylight and fresh air](#)
- [User Manual](#)

[Manuals+](#), [Privacy Policy](#)

This website is an independent publication and is neither affiliated with nor endorsed by any of the trademark owners. The "Bluetooth®" word mark and logos are registered trademarks owned by Bluetooth SIG, Inc. The "Wi-Fi®" word mark and logos are registered trademarks owned by the Wi-Fi Alliance. Any use of these marks on this website does not imply any affiliation with or endorsement.