



velleman WSAK207 Whadda The Conehead User Manual

[Home](#) » [Velleman](#) » velleman WSAK207 Whadda The Conehead User Manual 

velleman WSAK207 Whadda The Conehead User Manual

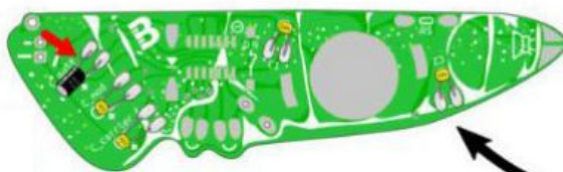


Measure the required length before cutting the component!

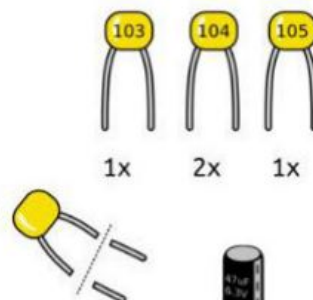
Find the original manual on <https://boldport.com/shop/the-conehead>

START

1



- C_carrier: 103
- C1, C2: 104
- C_mod: 105



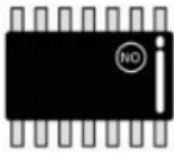
- C_gate: 47 μ F



Watch the polarity!
Att. la polarité !

2

1x



Watch the notch!
Att. l'entaille !

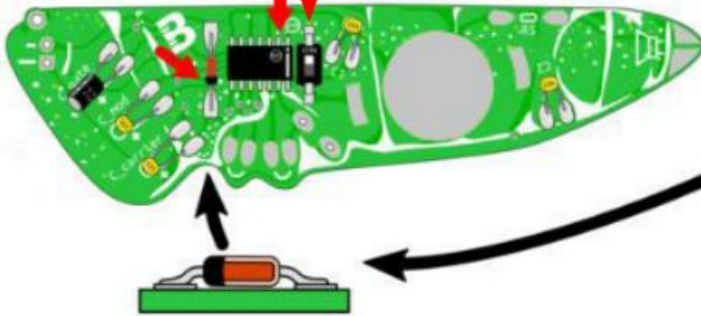
1x



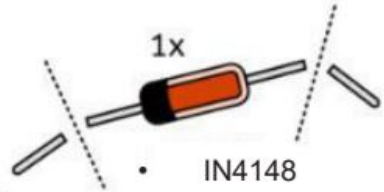
Watch the 'ON'
position!
Att. la position de
'ON' !

- MC74HC14 (chip)

- : switch



1x

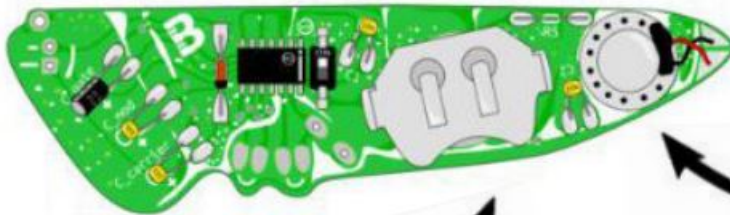


- IN4148

Watch the polarity!
Att. la polarité !

3

- R5: wire offcut



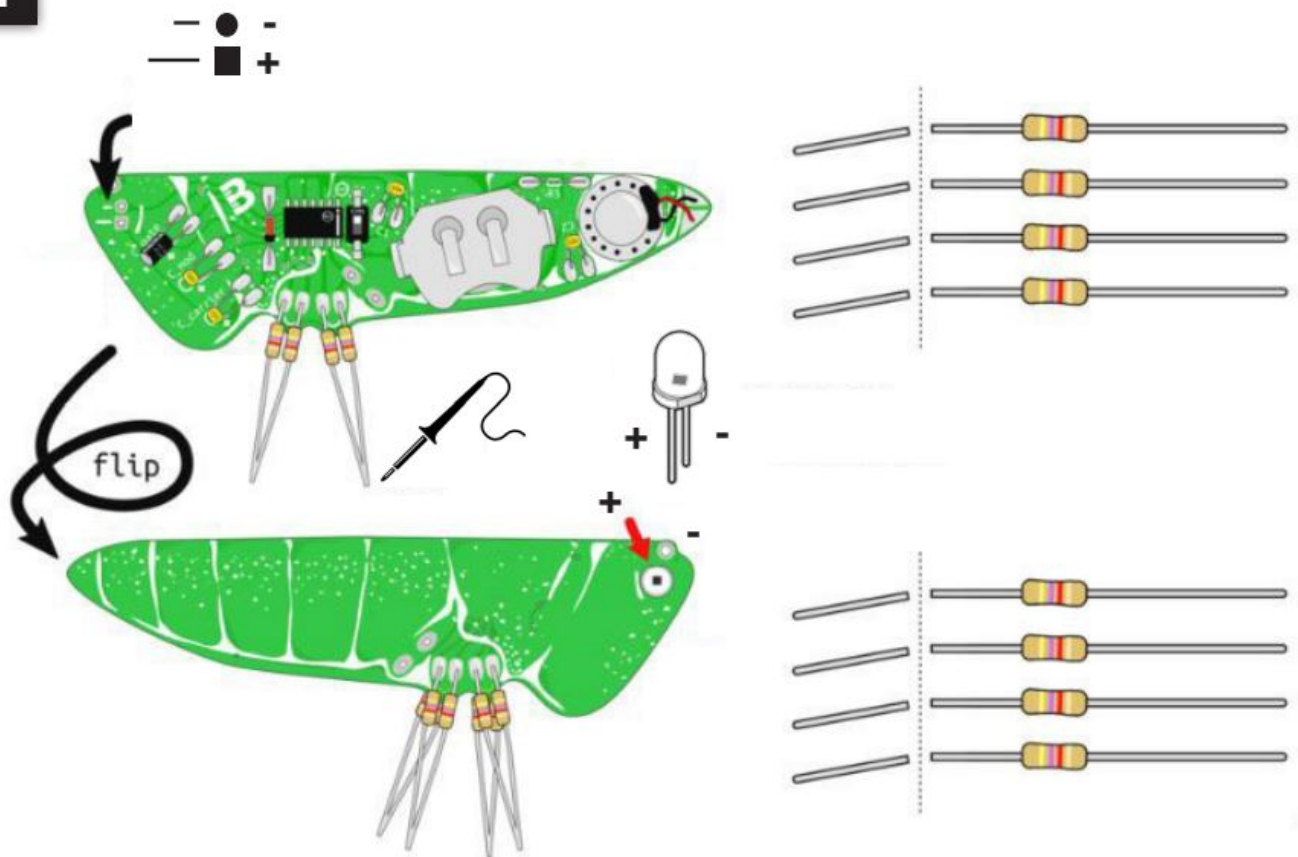
- speaker



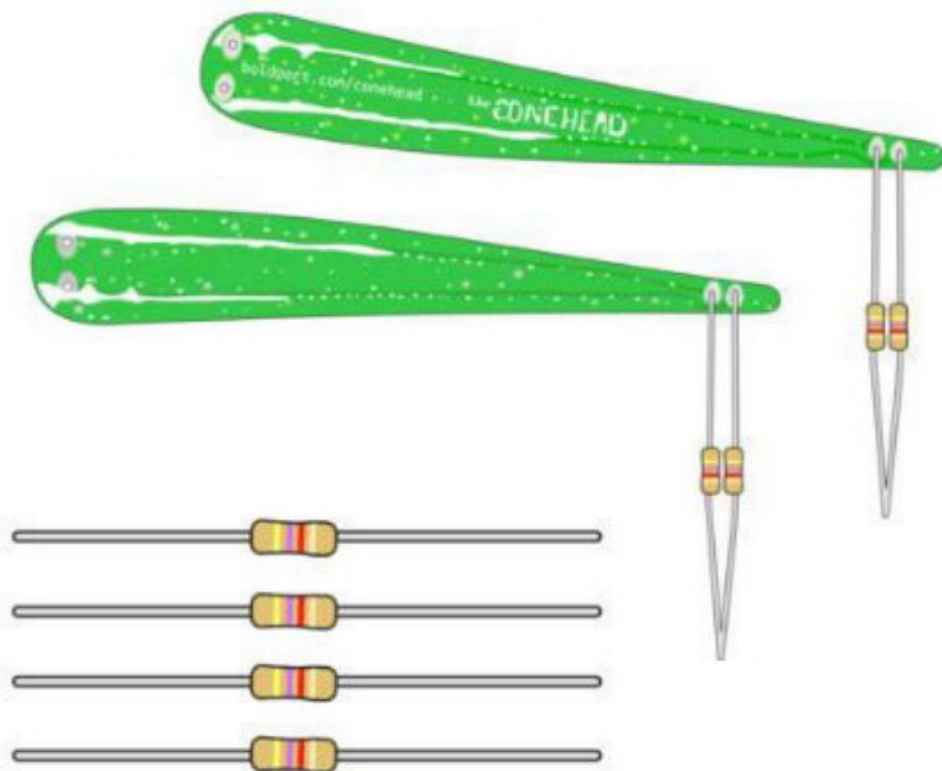
- battery holder

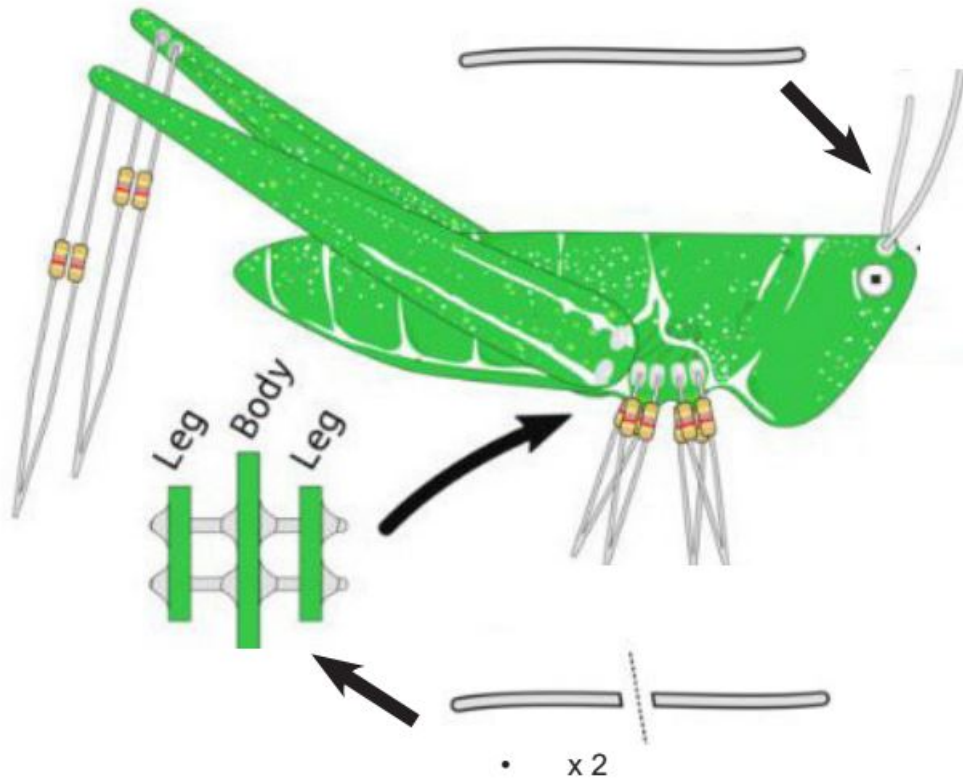
Watch the position!
Att. la position !

4



5





TO ALL RESIDENTS OF THE EUROPEAN UNION

Important environmental information about this product This symbol on this unit or the package, indicates that disposal of this unit after its lifecycle could harm the environment. Do not dispose the unit as unsorted municipal waste; it should be disposed by a specialized company for recycling. This unit should be returned to your distributor or to a local recycling service. Respect the local environmental rules. If any doubt contact your local authorities about waste disposal rules.

Contents

- 1 Documents / Resources
- 1.1 References
- 2 Related Posts

Documents / Resources

	velleman WSAK207 Whadda The Conehead [pdf] User Manual WSAK207 Whadda The Conehead, WSAK207, Whadda The Conehead, Conehead
--	---

References

- B [The Conehead — Boldport](#)