




velleman VM116 USB Controlled DMX Interface

[Home](#) » [Velleman](#) » velleman VM116 USB Controlled DMX Interface 

Contents

- [1 velleman VM116 USB Controlled DMX](#)
- [2 WARRANTY](#)
- [3 FEATURES](#)
- [4 SPECIFICATIONS*](#)
- [5 INCLUDES](#)
- [6 Preparation & connection](#)
- [7 Software](#)
- [8 Stand – alone test](#)
 - [8.1 Operation](#)
- [9 Documents / Resources](#)
- [10 Related Posts](#)

velleman

velleman VM116 USB Controlled DMX



WARRANTY

This product is guaranteed against defects in components and construction from the moment it is purchased and for a period of ONE YEAR starting from the date of sale. This guarantee is only valid if the unit is submitted together with the original purchase invoice. VELLEMAN Ltd limits its responsibility to the reparation of defects or, as VELLEMAN Ltd deems necessary, to the replacement or reparation of defective components. Costs and risks connected to the transport, removal or placement of the product, or any other costs directly or indirectly connected to the repair, will not be reimbursed by VELLEMAN Ltd. VELLEMAN Ltd will not be held responsible for any damages caused by the malfunctioning of a unit.

FEATURES

- This unit can control DMX fixtures using a PC and USB interface.
- Test software and “DMX Light Player” software is included, a DLL is provided to write you own software.
- Furthermore there is a stand-alone test function that outputs all 512 channels at a time, with adjustable levels.

SPECIFICATIONS*

- Connected and powered through USB.
- 512 DMX channels with 256 levels each.
- 3 pin XLR—DMX output connector.
- Windows 98SE or higher compatible.
- DLL included to write your own software.
- Optional 9V battery needed for stand alone test mode.
- Solid state – fuse protection on DMX output.
- Dimensions: 106 x 101 x 44.5mm (4.2" x 4.0" x 1.75").

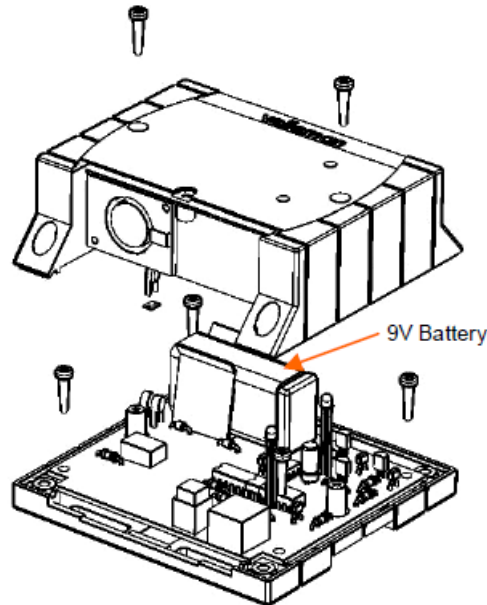
*If a DMX terminator is used, you will also need a USB hub (e.g. our PCUSB3).

INCLUDES

- USB cable

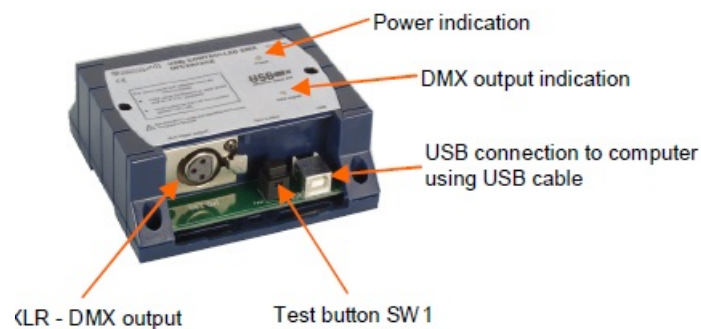
- CD with: test software, DLL for own developments, free DMX light player*
- * If not included, check our website 'www.velleman.be'

Preparation & connection



You can also use the DMX interface as a stand-alone test tool, in other words you do not have to connect the DMX interface with your computer!
 If you mean to use the stand-alone function (pag. 6), you should take care to execute the following steps before installing the software :

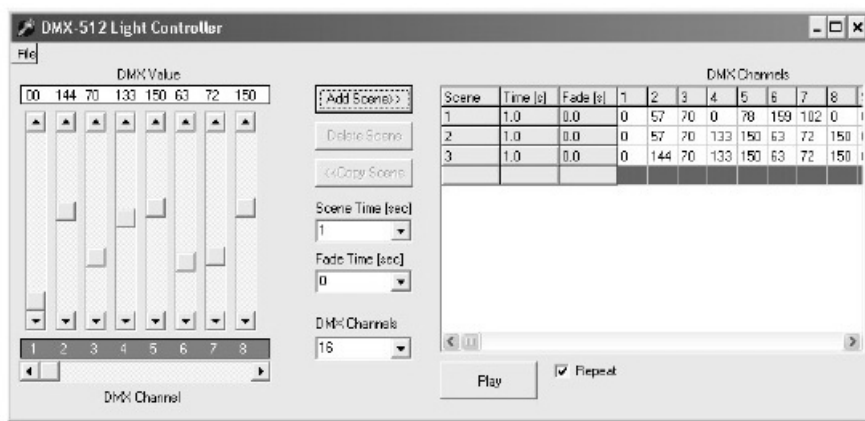
- Open the housing.
- Connect the battery with the battery snap.
- Insert the battery in the battery compartment.
- Close the housing.



Software

- Browse through the CD and open the K8062 – VM116 ... folder.
- Check the appropriate PDF files for further information.

The 'light player' software is installed in the folder by default: c:\program files\DMX



This is a screen shot of the DMX_demo software used to test the unit or to create some simple shows You will find the latest version of the software on our website

Stand – alone test

Test button SW1 is used to control the operation of the test mode.

Operation

- Do not connect the unit to the USB cable.
- A short button press turns the unit on. – Power LED goes on and the unit starts to send DMX code “0” on all the 512 DMX channels.
- Next button press increments the code on all the channels to ‘1’, next button press increments to ‘2’ etc.
- The “DMX signal” LED starts to light periodically when the test button is pressed for some times.
- The LED’s flashes are longer after pressing the button for several times.
- Pressing the button 256 times the internal counter rolls back to 0 and the unit starts again to send code “0” on all the 512 DMX channels.
- If you use e.g. a dimmer as a test equipment you should see how the intensity of the light increases on every button press.
- To turn the power off, keep pressing the button about 3 seconds until the power LED goes off.

WARNINGS

All repairs should be executed by qualified technicians.

Avoid the installation of the module in locations with standing or running water or excessive humidity. Indoor use only !

SAFETY INSTRUCTIONS


- Handle the module gently and carefully. Dropping it can damage the circuit board and case.
- Never exceed the protection limit values indicated in the specifications.
- As safety requirement vary, please check with your local authorities.
- No objects or liquids should be allowed to penetrate the housing.
- Make sure that the ventilation slots are not blocked.
- Wipe the device with a dry and clean cloth. Do not use detergents or other liquids that may damage the housing.

- Keep the device away from children.
- Facilitate the operation of the device by familiarising yourself with its adjustments and indications.
- Velleman modules are not suitable for use or as part of life support systems, or systems that might create hazardous situations of kind.

Repair under warranty is only possible with date and proof of purchase.



Documents / Resources

	<p>velleman VM116 USB Controlled DMX Interface [pdf]</p> <p>VM116 USB Controlled DMX interface, VM116, USB Controlled DMX interface, Controlled DM X interface, DMX interface</p>
---	---

Manuals+.