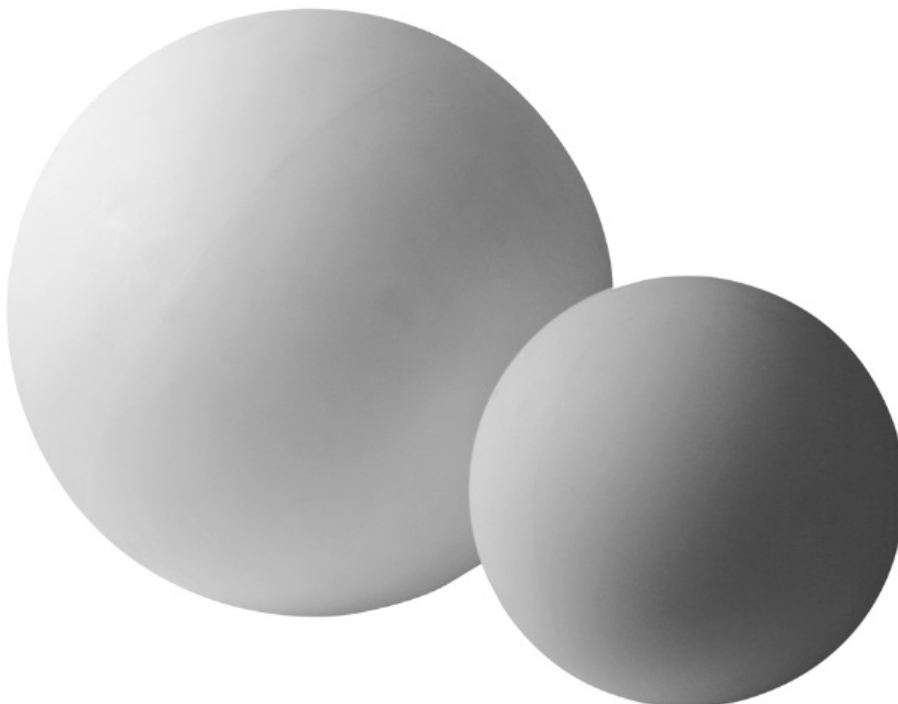


velleman VDPLB3D Dmx-Controlled LED Ball User Manual

[Home](#) » [Velleman](#) » velleman VDPLB3D Dmx-Controlled LED Ball User Manual 



VDPLB3D Dmx-Controlled LED Ball
User Manual



Contents

- 1 Introduction
- 2 Safety Instructions
- 3 General Guidelines
- 4 Installation
- 5 Operation
- 6 Cleaning and Maintenance
- 7 Technical Specifications
- 8 Velleman® Service and Quality Warranty
- 9 Documents / Resources
 - 9.1 References
- 10 Related Posts

Introduction

To all residents of the European Union

Important environmental information about this product



This symbol on the device or the package indicates that disposal of the device after its lifecycle could harm the environment. Do not dispose of the unit (or batteries) as unsorted municipal waste; it should be taken to a specialized company for recycling. This device should be returned to your distributor or to a local recycling service. Respect the local environmental rules.

If in doubt, contact your local waste disposal authorities.

Thank you for buying an HQ POWER product! Please read the manual thoroughly before bringing this device into service. If the device was damaged in transit, don't install or use it and contact your dealer.

Safety Instructions

	Be very careful during the installation: touching live wires can cause life-threatening electroshocks.
	Keep this device away from rain and moisture.
	Unplug the mains lead before opening the housing.

- Damage caused by disregard of certain guidelines in this manual is not covered by the warranty and the dealer will not accept responsibility for any ensuing defects or problems.
- A qualified technician should install and service this device.
- Do not switch the device on immediately after it has been exposed to changes in temperature. Protect the device against damage by leaving it switched off until it has reached room temperature.
- This device falls under protection class I. It is therefore essential that the device be earthed. Have a qualified person carry out the electric connection.
- Make sure that the available voltage does not exceed the voltage stated in the specifications of this manual.
- Do not crimp the power cord and protect it against damage. Have an authorised dealer replace it if necessary.
- Disconnect the device from the mains to clean it or when it is not in use. Handle the power cord by the plug only.

- Note that damage caused by user modifications to the device is not covered by the warranty.
- Keep the device away from children and unauthorised users.

General Guidelines

- This device is designed for professional use on stage, in discos, theatres, etc. The **VDPLB3D/VDPLB5D** should only be used indoors and connected to an alternating current of max. 230VAC~50Hz.
- Do not shake the device. Avoid brute force when installing or operating the device.
- Familiarise yourself with the functions of the device before actually using it. Do not allow operation by unqualified people. Any damage that may occur will most probably be due to unprofessional use of the device.
- Use the original packaging if the device is to be transported.
- All modifications of the device are forbidden for safety reasons.
- Only use the device for its intended purpose. All other uses may lead to short circuits, burns, electroshocks, crash, etc. Using the device in an unauthorised way will void the warranty.

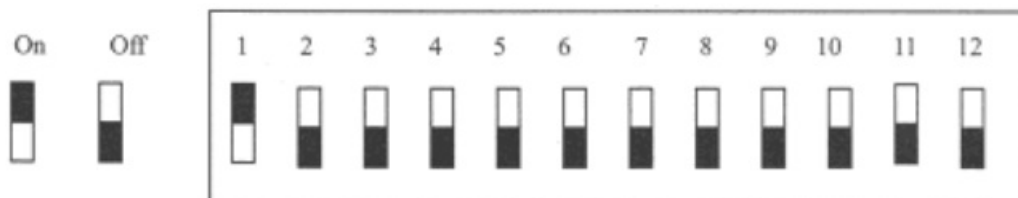
Installation

- Install the device in a location where few people pass by and that is unreachable for unauthorised persons.
- Make sure there is no flammable material within a 0.5m radius of the device.

Operation

• DMX Control

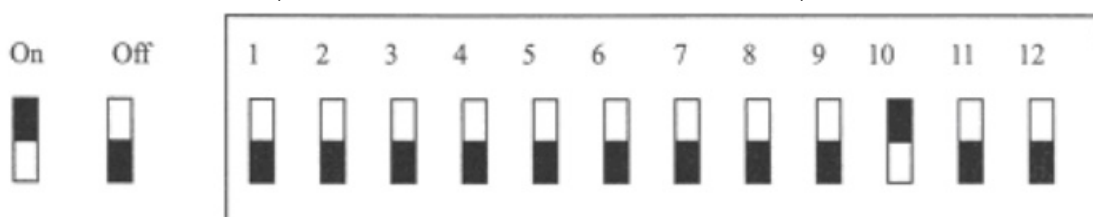
Make sure DIP switches 10, 11 and 12 are in the OFF position. Next, determine the address with DIP switches 1 to 9.



CHANNEL	DESCRIPTION	VALUE	FUNCTION
1	Red	0 — 255	Red dimming from 0 to 100%
2	Green	0 — 255	Green dimming from 0 to 100%
3	Blue	0 — 255	Blue dimming from 0 to 100%
4	Dimmer	0 — 255	General dimming from 0 to 100%
5	Sound Sensitivity	0 — 25	No sound activation
		26 — 255	Sound activation from high to low
6	Pre-programmed chases	0 — 4	No chase
		5 — 31	Chase 1: fading between red and green
		32 — 63	Chase 2: fading between green and blue
		64 — 95	Chase 3: fading between blue and red
		96 — 127	Chase 4: fading between cyan and red
		128 — 159	Chase 5: fading between magenta and green
		160 — 191	Chase 6: fading between yellow and blue
		192 — 223	Chase 7: fading between black and white
		224 — 255	Chase 8: running all 7 chases mentioned above

• Master/Slave Mode

o Put the master unit as follows (DIP switch 10 to ON, DIP switch 11 to OFF):



The 8 chases can be activated by setting DIP switches 1, 2 and 3 as follows:

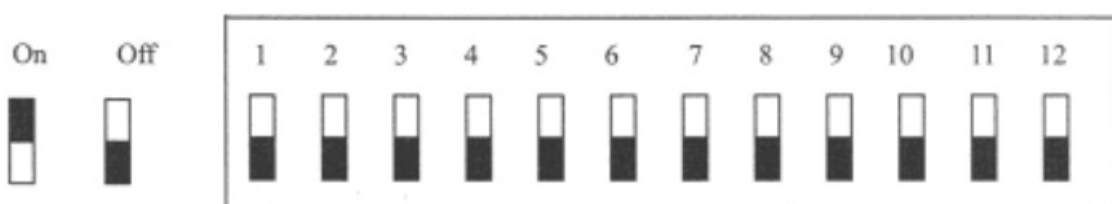
DIP SWITCH			CHASE	EFFECT
1	2	3		
Off	Off	Off	Chase 1	Fading — red and green
On	Off	Off	Chase 2	Fading — green and blue
Off	On	Off	Chase 3	Fading — blue and red
On	On	Off	Chase 4	Fading — cyan and red
Off	Off	On	Chase 5	Fading — magenta and green
On	Off	On	Chase 6	Fading – yellow and blue
Off	On	On	Chase 7	Fading – black and white
On	On	on	Chase 8	Fading – all colours above

The speed can be activated by setting DIP switches 4, 5 and 6 as follows:

DIP SWITCH			SPEED	RUNNING TIME
4	5	6		
Off	Off	Off	Speed 1	0.5 seconds
On	Off	Off	Speed 2	1.5 seconds
Off	On	Off	Speed 3	3 seconds
On	On	Off	Speed 4	4.5 seconds
Off	Off	On	Speed 5	8 seconds
On	Off	On	Speed 6	12 seconds
Off	On	On	Speed 7	50 seconds
On	On	on	Speed 8	60 seconds

Set DIP switch 10 to ON to enter the sound-activated mode.

o Put the slave unit as follows (DIP switch 10, 11 and 12 to OFF):



Cleaning and Maintenance

1. All screws should be tightened and free of corrosion.
2. The housing, visible parts, mounting supports and the installation location (e.g. ceiling, suspension, trussing) should not be deformed, modified or tampered with e.g. do not drill extra holes in mounting supports, do not change the location of the connections.
3. Moving mechanic parts must not show any signs of wear and tear.
4. The electric power supply cables must not show any damage. Have a qualified technician maintain the device.
5. Disconnect the device from the mains prior to maintenance activities.
6. Wipe the device regularly with a moist, lint-free cloth. Do not use alcohol or solvents.
7. There are no user-serviceable parts.
8. Contact your dealer for spare parts if necessary.

Technical Specifications

Power Supply	max. 230VAC~50Hz
Power Consumption	max. 12W
Fuse	1A (order code FF1N)
Dimensions	
VDPLB3D Ø300mm	Ø300mm
VDPLB5D Ø500mm	Ø500mm
Total Weight	
VDPLB3D 2.2kg	2.2kg
VDPLB5D 3.8kg	3.8kg

For more info concerning this product, please visit our website www.hqpower.com.
The information in this manual is subject to change without prior notice.

Velleman® Service and Quality Warranty

Velleman® has over 35 years of experience in the electronics world and distributes its products in more than 85 countries.

All our products fulfil strict quality requirements and legal stipulations in the EU. In order to ensure the quality, our products regularly go through an extra quality check, both by an internal quality department and by specialized external organisations. If, all precautionary measures notwithstanding, problems should occur, please make appeal to our warranty (see guarantee conditions).

General Warranty Conditions Concerning Consumer Products (for EU):

- All consumer products are subject to a 24-month warranty on production flaws and defective material as from the original date of purchase.
- Velleman® can decide to replace an article with an equivalent article, or to refund the retail value totally or partially when the complaint is valid and a free repair or replacement of the article is impossible, or if the expenses are out of proportion.

You will be delivered a replacing article or a refund at the value of 100% of the purchase price in case of a flaw occurred in the first year after the date of purchase and delivery, or a replacing article at 50% of the purchase price or a refund at the value of 50% of the retail value in case of a flaw occurred in the second year after the date of purchase and delivery.


• **Not covered by warranty:**

- all direct or indirect damage caused after delivery to the article (e.g. by oxidation, shocks, falls, dust, dirt, humidity...), and by the article, as well as its contents (e.g. data loss), compensation for loss of profits;
 - frequently replaced consumable goods, parts or accessories such as batteries, lamps, rubber parts, drive belts... (unlimited list);
 - flaws resulting from fire, water damage, lightning, accident, natural disaster, etc. ...;
 - flaws caused deliberately, negligently or resulting from improper handling, negligent maintenance, abusive use or use contrary to the manufacturer's instructions;
 - damage caused by a commercial, professional or collective use of the article (the warranty validity will be reduced to six (6) months when the article is used professionally);
 - damage resulting from an inappropriate packing and shipping of the article;
 - all damage caused by modification, repair or alteration performed by a third party without written permission by Velleman®.
- Articles to be repaired must be delivered to your Velleman® dealer, solidly packed (preferably in the original packaging), and be completed with the original receipt of purchase and a clear flaw description.
 - **Hint:** In order to save on cost and time, please reread the manual and check if the flaw is caused by obvious causes prior to presenting the article for repair. Note that returning a non-defective article can also involve handling costs.
 - Repairs occurring after warranty expiration are subject to shipping costs.
 - The above conditions are without prejudice to all commercial warranties.

The above enumeration is subject to modification according to the article (see article's manual).



Documents / Resources

	<p>velleman VDPLB3D Dmx-Controlled LED Ball [pdf] User Manual VDPLB3D Dmx-Controlled LED Ball, VDPLB3D, Dmx-Controlled LED Ball, Controlled LED Ball, LED Ball, Ball</p>
-------------------------------------------------------------------------------------	----------------------------------------------------------------------------------------------------------------------------------------------------------------------------------------------

References

- [🌐 Details â€œ Own brands â€œ Velleman â€œ Wholesaler and developer of electronics](#)

