

velleman KA12 Analog Input Extension Shield Installation Guide

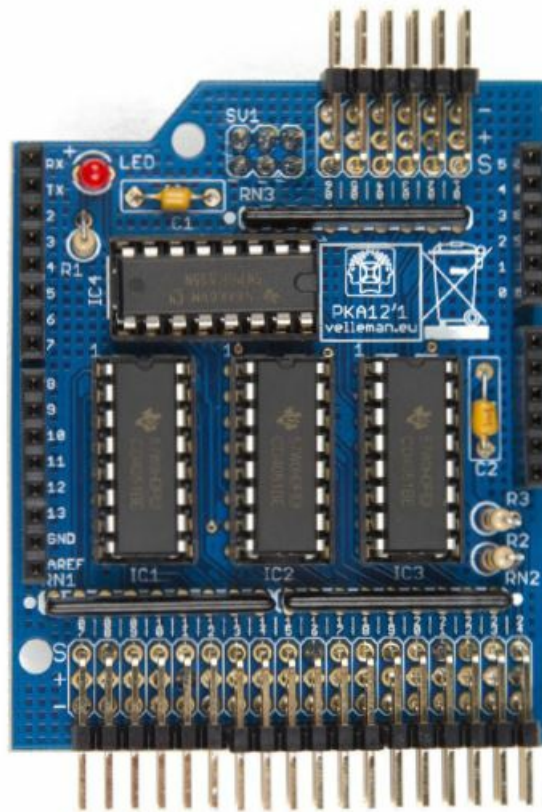
[Home](#) » [Velleman](#) » velleman KA12 Analog Input Extension Shield Installation Guide 

Contents

- [1 velleman KA12 Analog Input Extension Shield](#)
- [2 Introduction](#)
- [3 What's in the box](#)
- [4 Building instructions](#)
- [5 Connecting the KA12](#)
- [6 Installing the Arduino Library](#)
- [7 Line by line](#)
- [8 Documents / Resources](#)
 - [8.1 References](#)
- [9 Related Posts](#)



velleman KA12 Analog Input Extension Shield



Introduction

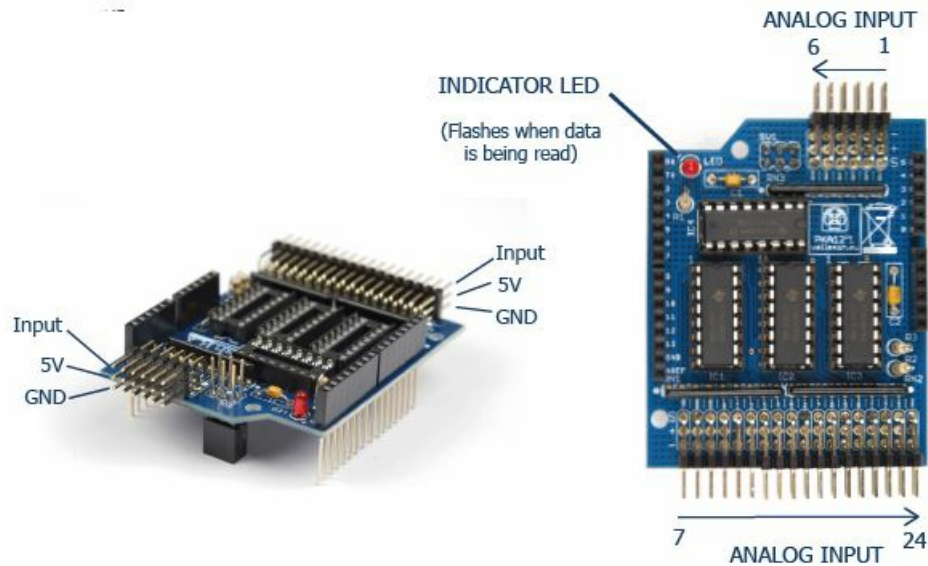
The Arduino UNO™ is equipped with 6 analog inputs but some projects call for more. For example; sensor- or robot projects. The analog input extension shield only uses 4 I/O lines (3 digital, 1 analog) but adds a whopping 24 inputs, so in total you have 29 analog inputs at your disposal.

Features:

- 24 analog inputs
- only 4 I/O lines are used
- stackable design
- complete with library and examples
- works with Arduino UNO™ and compatible boards

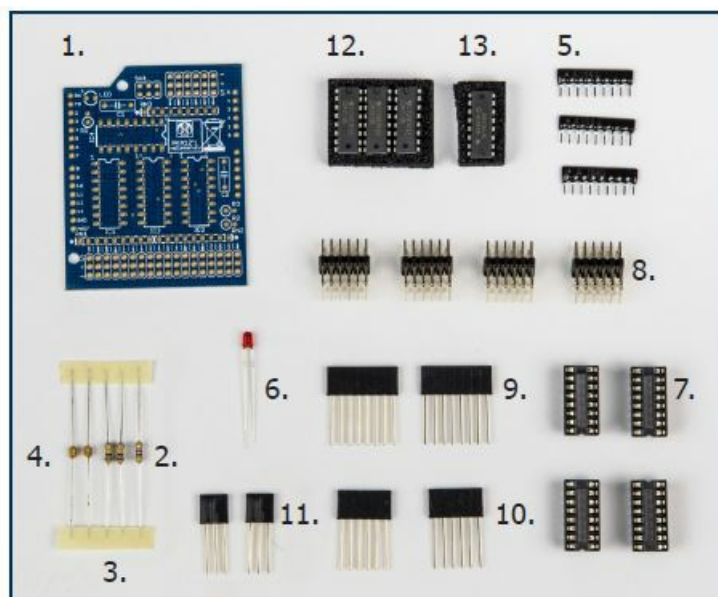
Specifications:

- analog inputs: 0 – 5 VDC
- uses pins: 5, 6, 7 and A0 on Arduino UNO™ board
- dimensions: 54 x 66 mm (2.1" x 2.6")



In this manual, we will explain how to assemble the KA12 and how to install the included Arduino library with an example sketch.

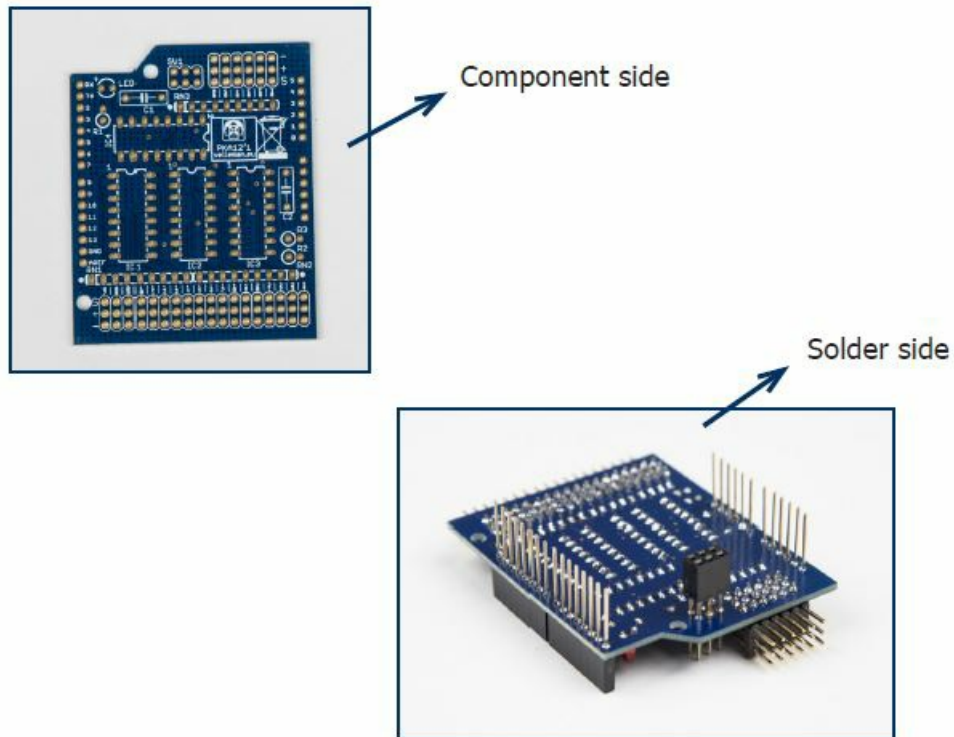
What's in the box



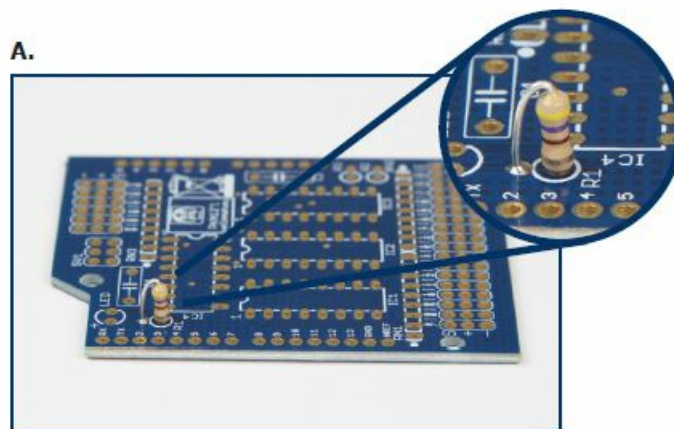
1. 1 X PCB
2. 1 X 470 Ohm resistor (yellow, purple, brown)
3. 2 X 100k Ohm resistor (brown, black, yellow)
4. 2 X ceramic multilayer capacitor
5. 3 X resistor array 100k
6. 1 X 3 mm red LED
7. 4 X IC holder (16 pins)
8. 4 X pinheader with 6×3 pins
9. 2 X 8 pin female header
10. 2 X 6 pin female header
11. 2 X 3 pin female header
12. 3 X IC – CD4051BE

13. 1 X IC – SN74HC595N

Building instructions



- Position the 470 Ohm resistor as shown in the picture and solder. R1: 470 Ohm (yellow, black, brown)



- Position the two 100k Ohm resistors as shown in the picture and solder them. R2, R3: 100k Ohm (brown, black, yellow)



- C1, C2: ceramic multilayered capacitors

C.



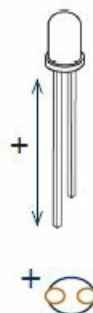
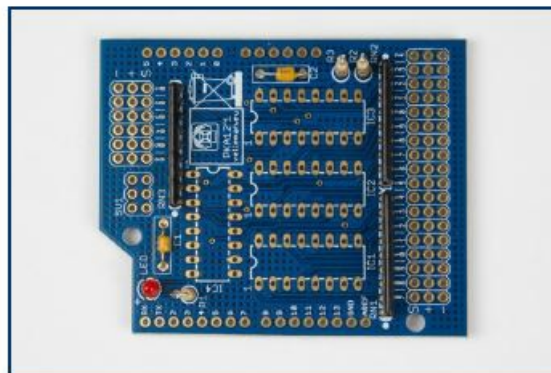
- RN1, RN2, RN3: resistor array 100k

D.



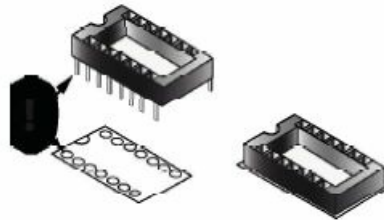
- LED: red LED Mind the polarity!

E.



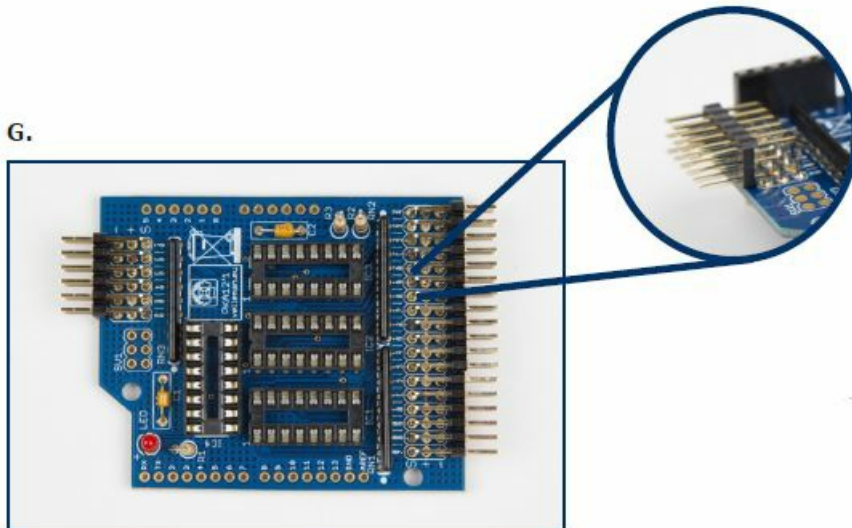
- IC1, ..., IC4: IC holders Mind the direction of the notch!

F.



- Solder all the 6×3 pinheader connectors. Make sure the bent pins are soldered!

G.

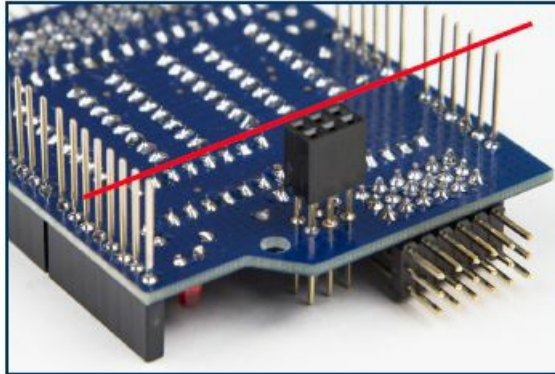


- Solder both the 6 pin female headers and the 8 pin female headers into place. Do not cut the pins!

H.



I.



- SV1: two 3 pin female headers

Insert the pins on the solder side and solder on the component side!

Make sure the top of the headers are equally leveled and do not exceed the top of the other pins. This way, it will fit nicely onto your Arduino Uno.

Do not cut the pins!

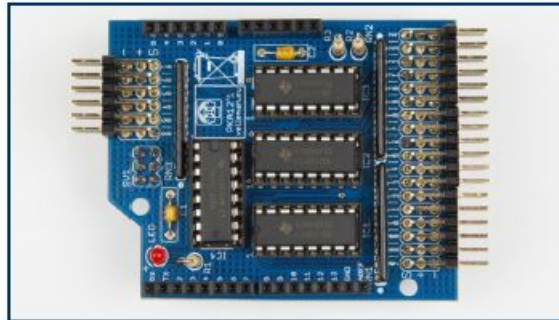
- IC1, IC2, IC3: IC – CD4051BE Mind the direction of the notch! It should match the notch on the IC holder!



J.



K.

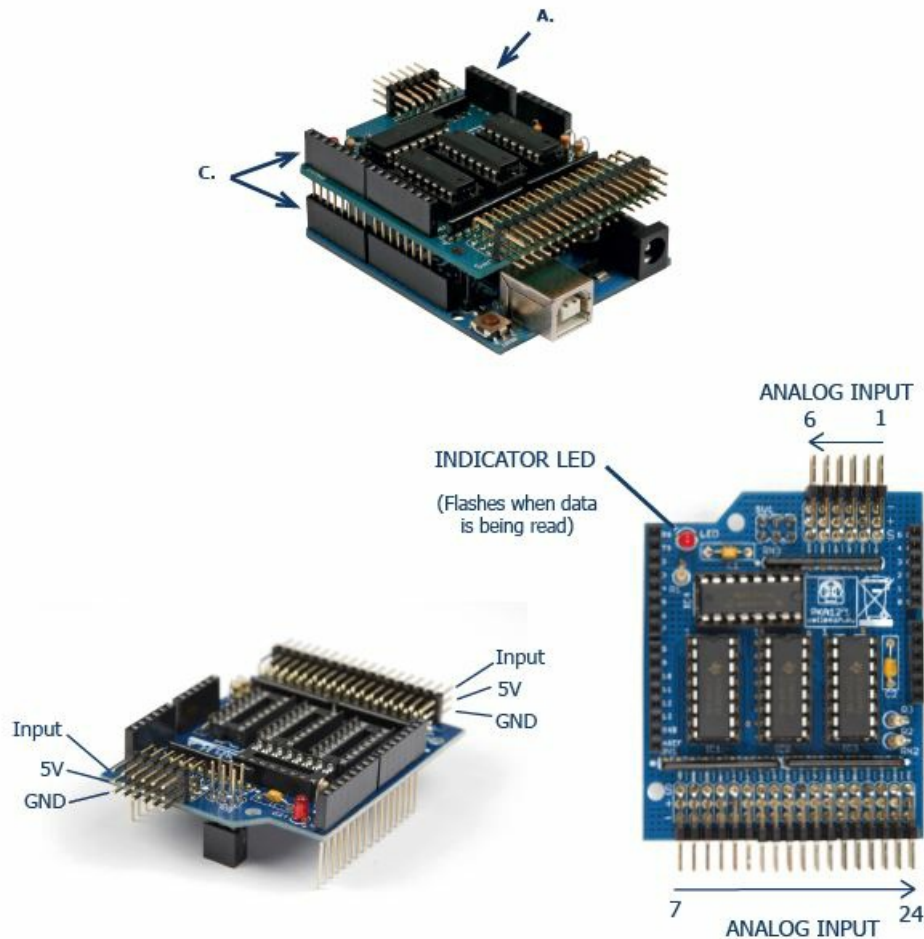


- IC4: IC – SN74HC595N Mind the direction of the notch! It should match the notch on the IC holder!

Connecting the KA12

It is very important to insert the KA12 correctly onto the Arduino Uno to avoid damage to the pins and to ensure a good connection. Here are the most important attention points:

- A. This 6 pin female header fits precisely into the 'ANALOG IN' on the Arduino.
- B. The two 3 pin female headers slide over the 6 ICSP pins on the Arduino.
- C. The numbers beside the 8 pin female headers on the KA12 should correspond with the Digital I/O's.
- D. Slide the pins carefully into the Arduino to prevent damage.



Installing the Arduino Library

Install the library:

Go to the KA12 download page on the Velleman website:

<http://www.vellemanprojects.eu/support/downloads/?code=KA12>

Download 'velleman_KA12' extract and copy the "velleman_KA12" folder to your Documents\Arduino\libraries.

Example sketch:

- A. Open the Arduino software
- B. Then click file/Examples/Velleman_KA12/Velleman_KA12

The code:

```

#include <Velleman_KA12.h>

int all[24];
int sensor;

void setup() {
    Serial.begin(115200);
    ka12_init();
}

void loop() {

    ka12_readAll(all);
    for (int i=0; i < 24; i=i+1) {
        Serial.print(i);
        Serial.print(" / ");
        Serial.println(all[i]);
    }

    sensor = ka12_read(1);
    Serial.print("Value sensor 1 :");
    Serial.println(sensor);

    delay(1000);
}



```

Line by line

- In order to make the KA12's functions easy to use, we made a library. Line 1 and 6 declare the use and initialize the library. This must be done in every sketch that uses the KA12. The library gives you the possibility to easily read all sensor values and save them in an int-array or to read one value and save this to an int.
- To read all sensors you should declare an int-array with 24 places (line 2). To fill the array we use the readAll command (line 8). In the example we display all the values to the serial monitor using a for loop (line 9 to 12). The serial communication is set up in line 5. If you only need one value you can use the "ka12_read" command (line 13).

VELLEMAN nv – Legen Heirweg 33, Gavere (Belgium)
vellemanprojects.com

Documents / Resources

 <p>ASSEMBLY MANUAL</p> <p>OCTOBER 2014</p> <p>ANALOG INPUT EXTENSION SHIELD FOR ARDUINO</p>  <p>www.velleman.nl</p>	<p>velleman KA12 Analog Input Extension Shield [pdf] Installation Guide</p> <p>KA12 Analog Input Extension Shield, KA12, Analog Input Extension Shield, Input Extension Shield, Extension Shield, Shield</p>
--	--

References

- [Details â€“ Own brands â€“ Velleman â€“ Wholesaler and developer of electronics](#)
- [Details â€“ Own brands â€“ Velleman â€“ Wholesaler and developer of electronics](#)