



velleman HQM119C DIGITAL TO ANALOG AUDIO CONVERTER User Manual

[Home](#) » [Velleman](#) » velleman HQM119C DIGITAL TO ANALOG AUDIO CONVERTER User Manual 

velleman HQM119C DIGITAL TO ANALOG AUDIO CONVERTER User Manual



Contents

- 1 Introduction
- 2 Symbols
- 3 Safety Instructions
- 4 General Guidelines
- 5 Overview
- 6 Installation
- 7 Maintenance
- 8 Specifications
- 9 Documents / Resources
 - 9.1 References
- 10 Related Posts

Introduction

To all residents of the European Union
Important environmental information about this product



■ This symbol on the device or the package indicates that disposal of the device after its lifecycle could harm the environment. Do not dispose of the unit (or batteries) as unsorted municipal waste; it should be taken to a specialized company for recycling. This device should be returned to your distributor or to a local recycling service. Respect the local environmental rules.

If in doubt, contact your local waste disposal authorities.

Thank you for choosing HQPower! Please read the manual thoroughly before bringing this device into service. If the device was damaged in transit, do not install or use it and contact your dealer.

Symbols

1. CE marking
2. Read and understand this manual and all safety signs before using this appliance.
3. Indoor use only.

Safety Instructions

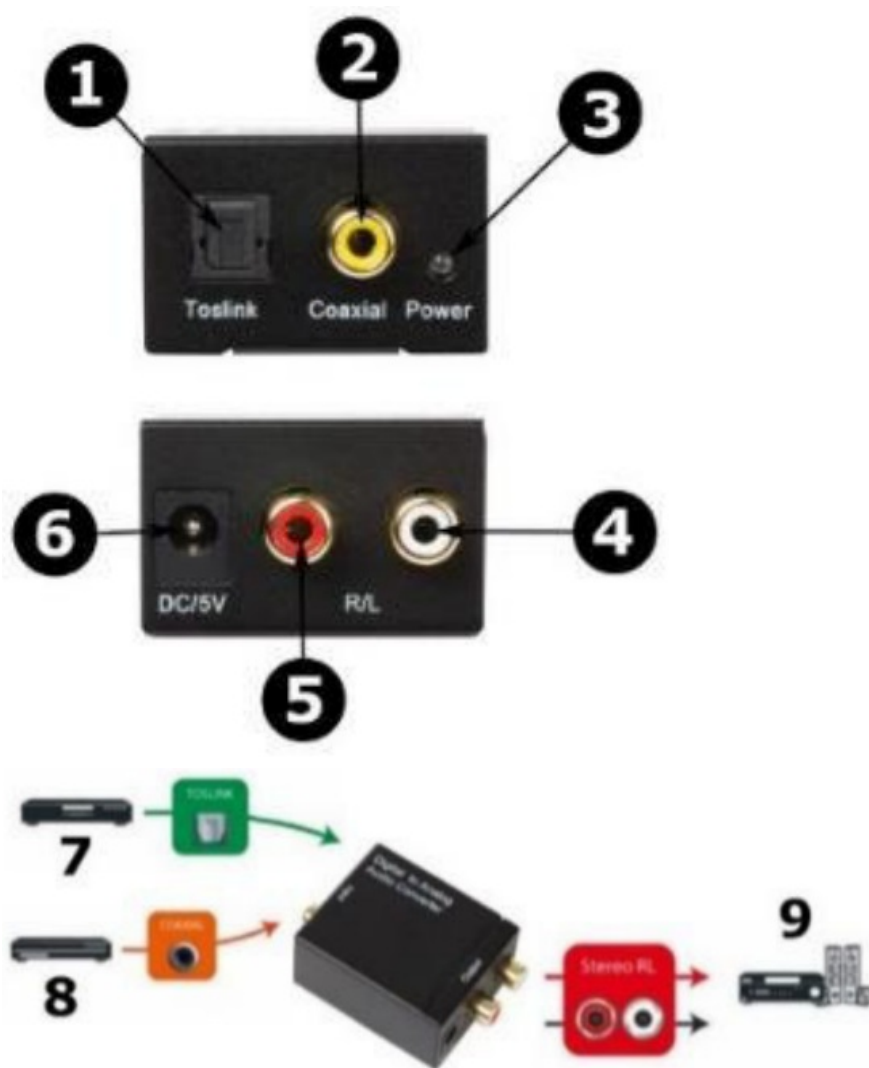
- This device can be used by children aged from 8 years and above, and persons with reduced physical, sensory or mental capabilities or lack of experience and knowledge if they have been given supervision or instruction concerning the use of the device in a safe way and understand the hazards involved. Children shall not play with the device. Cleaning and user maintenance shall not be made by children without supervision.
- There are no user-serviceable parts inside the device. Refer to an authorized dealer for service and/or spare parts.
- Do not immerse the device in any liquid. Keep away from high heat and fire.
- Use only the included power adapter.
- Switch off all audio/video devices and disconnect the power adapter of the converter before connecting a

Toslink® cable. Do not touch the optical fibre ends of the cable while making connections.

General Guidelines

- Refer to the Velleman® Service and Quality Warranty on www.velleman.eu.
- Protect this device from shocks and abuse. Avoid brute force when operating the device.
- Familiarise yourself with the functions of the device before actually using it.
- All modifications of the device are forbidden for safety reasons. Damage caused by user modifications to the device is not covered by the warranty.
- Only use the device for its intended purpose. Using the device in an unauthorised way will void the warranty.
- Damage caused by disregard of certain guidelines in this manual is not covered by the warranty and the dealer will not accept responsibility for any ensuing defects or problems.
- Keep this manual for future reference.

Overview



1. Toslink® input
2. RCA coaxial input
3. power indicator
4. L RCA audio output

5. R RCA audio output
6. DC power supply
7. A/V device 1
8. A/V device 2
9. amplifier

Installation

WARNING: Before installation, switch off all audio/video devices and unplug the power adapter of the converter. Switch on all devices after all the connections are made.

- Choose your input type: COAXIAL: if you use an S/PDIF coaxial cable (not incl.) or OPTICAL: if you use a Toslink® cable (not incl.).
NOTE: Toslink® fibre cable is fragile, handle with care and do not bend. Do not touch the optical fibre ends of the cable while you make the connections. Use only one type of input cable at the same time. Do not use Toslink® and S/PDIF coaxial cables together.
- Connect the cable to the correct input:
 - Connect the Toslink® cable to the Toslink® input [1] and connect the other end to the Toslink® output of your audio/video device [7].
 - Connect the coax cable to the coaxial input [2] and connect the other end to the audio output of your audio/video device [8].
- Connect the RCA cable (incl.) to the RCA audio outputs [4, 5] (white RCA plug in the white jack; red RCA plug in the red jack) and connect the other end of the cable to your amplifier [9].
- Connect the power adapter (incl.) to the DC jack [6] and plug the other end into a suitable power outlet. The power indicator [3] lights.
- Switch on all connected audio/video devices.

Maintenance

Occasionally wipe with a damp cloth to keep it looking new. Do not use harsh chemicals, cleaning solvents or strong detergents.

Specifications

input

Toslink®: Toslink® (SPDIF optical) female
coaxial: digital coax audio (RCA) female

output

analogue stereo: 2x RCA female
audio format support: 32 kHz, 44.1 kHz, 48 kHz, 96 kHz
power supply: 5 VDC, 1A (not incl.)
power cable: PACUSB2155, 1 m (incl.)
power consumption: 0.5 W max.
dimensions: 51 x 41 x 26 mm
weight: 78 g

Use this device with original accessories only.


Velleman nv cannot be held responsible in the event of damage or injury resulting from (incorrect) use of this device. For more info concerning this product and the latest version of this manual, please visit our website www.hqpower.eu. The information in this manual is subject to change without prior notice.

Toslink is a trademark of Toshiba Corporation in the United States and other countries.

© COPYRIGHT NOTICE

The copyright to this manual is owned by Velleman nv. All worldwide rights reserved. No part of this manual may be copied, reproduced, translated or reduced to any electronic medium or otherwise without the prior written consent of the copyright holder.

Documents / Resources

| | |
|---|--|
|  | velleman HQM119C DIGITAL TO ANALOG AUDIO CONVERTER [pdf] User Manual HQM119C DIGITAL TO ANALOG AUDIO CONVERTER, DIGITAL TO ANALOG AUDIO CONVERTER, AUDIO CONVERTER |
|---|--|

References

-  [Details â€œ Own brands â€œ Velleman â€œ Wholesaler and developer of electronics](#)
-  [Velleman â€œ Wholesaler and developer of electronics](#)