



## velbus VMBLCDWB 4 Button Control with LCD Display User Manual

[Home](#) » [VELBUS](#) » velbus VMBLCDWB 4 Button Control with LCD Display User Manual 

velbus VMBLCDWB 4 Button Control with LCD Display User Manual



### Contents

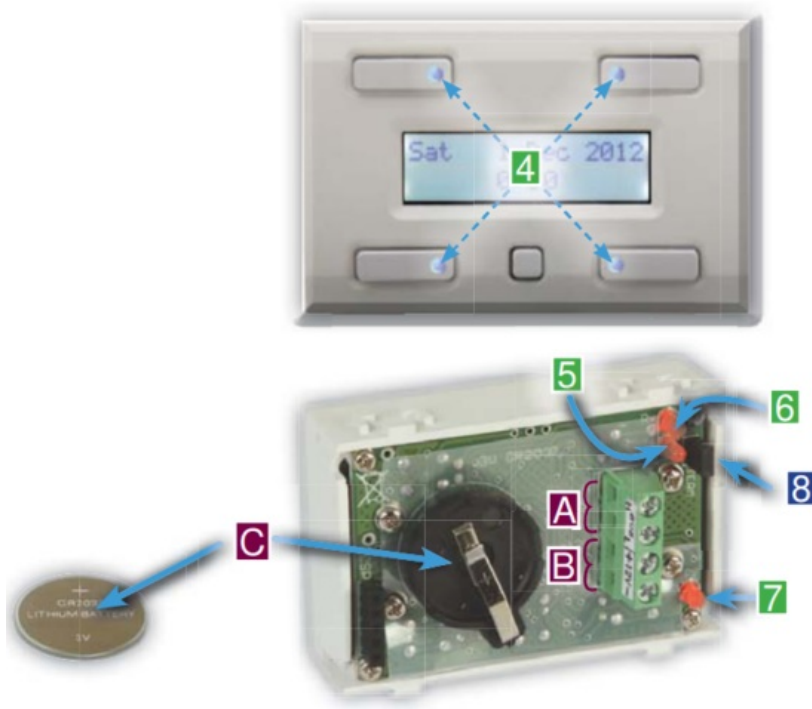
- [1 Velbus Home Automation](#)
- [2 Product Description](#)
- [3 Features](#)
- [4 Specifications](#)
- [5 PAGE SELECTION](#)
- [6 CONFIGURATION MENU](#)
- [7 Control functions](#)
- [8 USE](#)
- [9 VELBUS HOME CENTER INTERFACE SERVER](#)
- [10 Documents / Resources](#)
- [11 Related Posts](#)

Choosing Velbus is choosing comfort, safety and energy saving with the guarantee that your home is ready for the future. All this for a price barely higher than that of a traditional installation.



### Product Description





1. Push button or increase function
2. Page selection / configuration push-button
3. Push button or decrease function
4. Backlight and indication LED
5. Velbus transmission® LED
6. Velbus® receiving LED
7. Velbus® power LED
8. Terminator
9. **A.** Velbus®
10. **B.** Velbus® power supply
11. **C.** Backup battery

If in case of a power failure you desire a backup for the internal clock: Place a CR2032 battery. This is only needed on 1 module in your Velbus® system.

## Features

- all 32 channels\* can have a custom label
- instant access of 4 channels, 28 additional controls.
- programmable clock / timer functions, 170 steps (day, week or month programs)

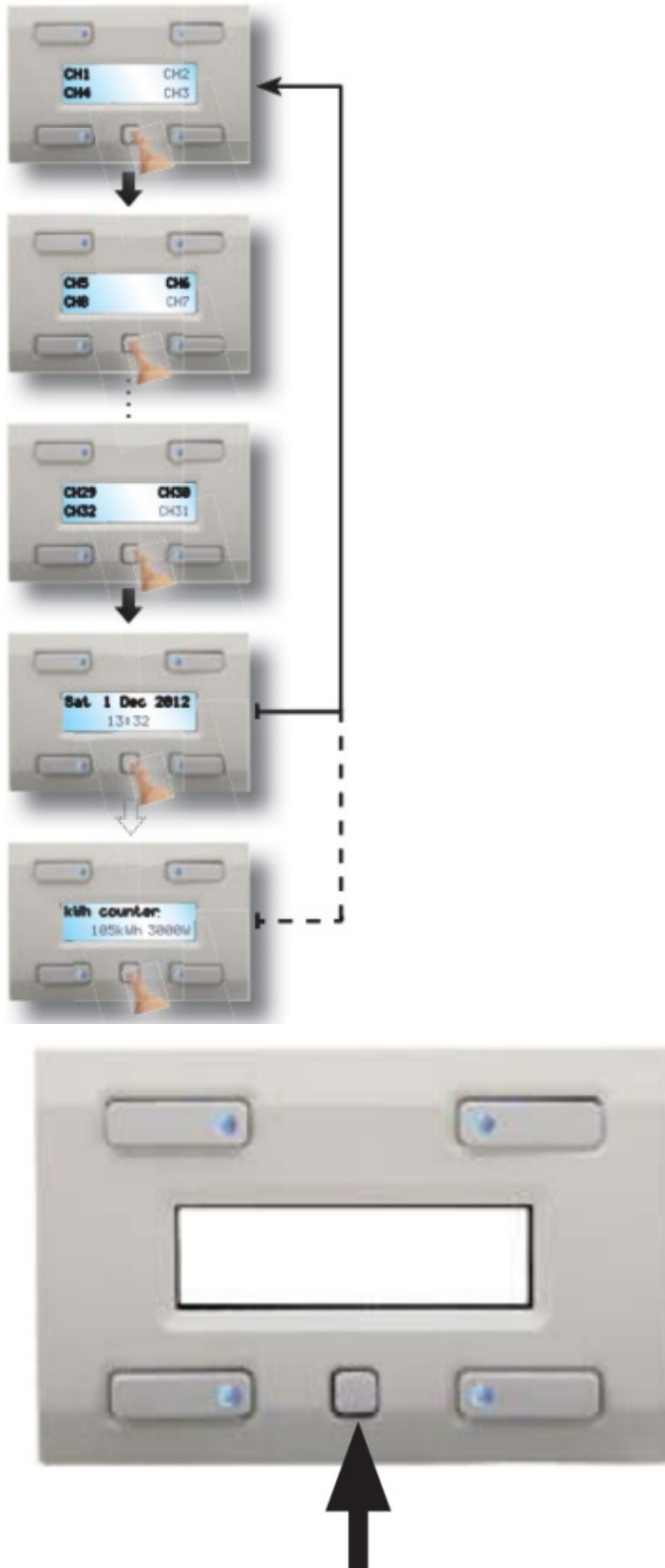
## Specifications

- each channel can activate up to 255 modules on the bus
- **power supply:** 12V...18Vdc / 30mA
- **minimum wall cut-out:** 70w x 50h x 20d mm
- **optional:** CR2032 back-up battery for clock

(\*)1 VMBLCDWB module takes max. 4 addresses

Settings and labels can also be set using USB or RS232 computer interface module (VMB1USB and VMB1RS)

## PAGE SELECTION



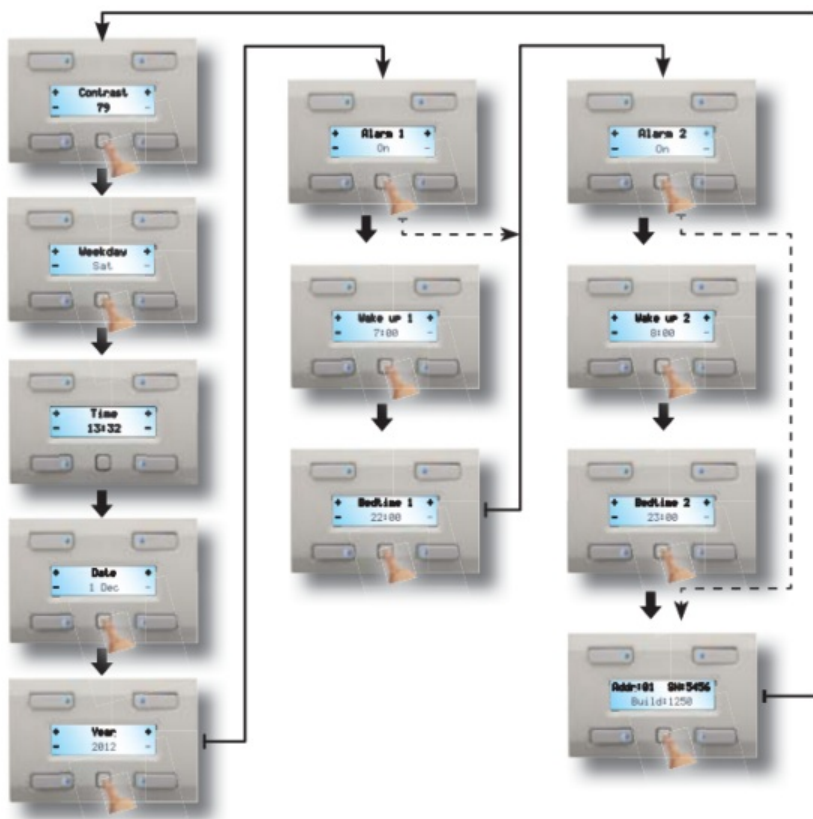
Page selection / configuration push-button

Short press on the Page selection /configuration push button will go to the next page.

## CONFIGURATION MENU

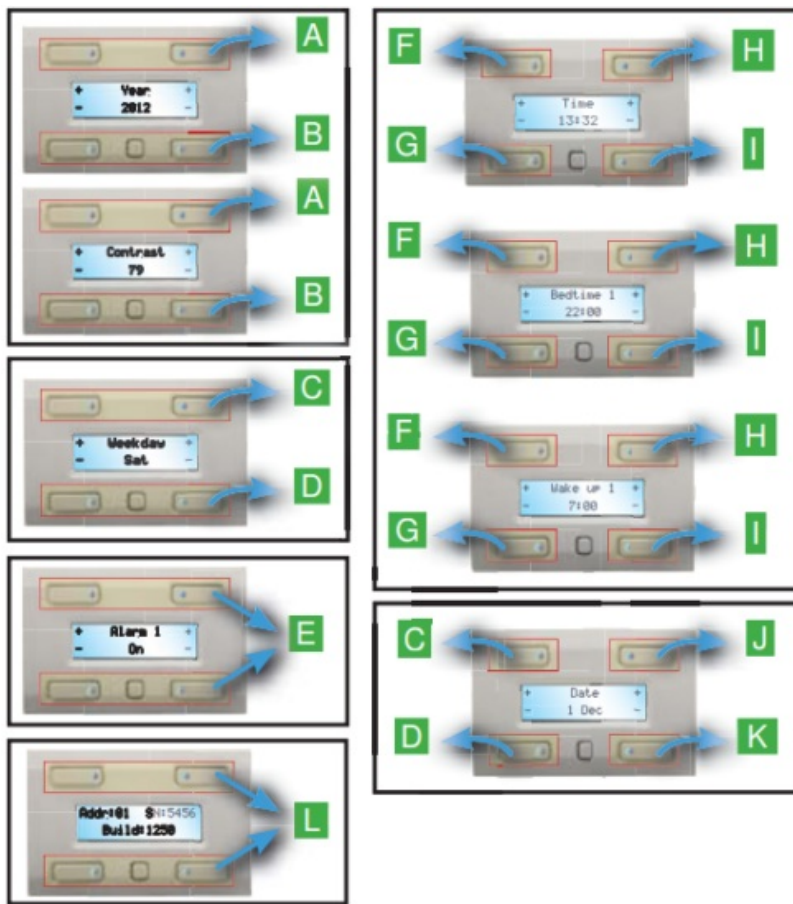


Page selection / configuration push-button



A long press on the “page selection / configuration” push button will open the configuration menu. At any time you can go to the next setup page with a short press on the “page selection / configuration” push button. The module switches back to the main page after 5 seconds of inactivity (except when the time is displayed).

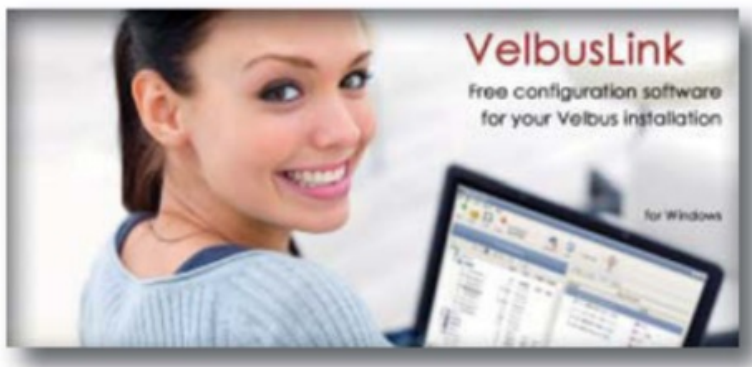
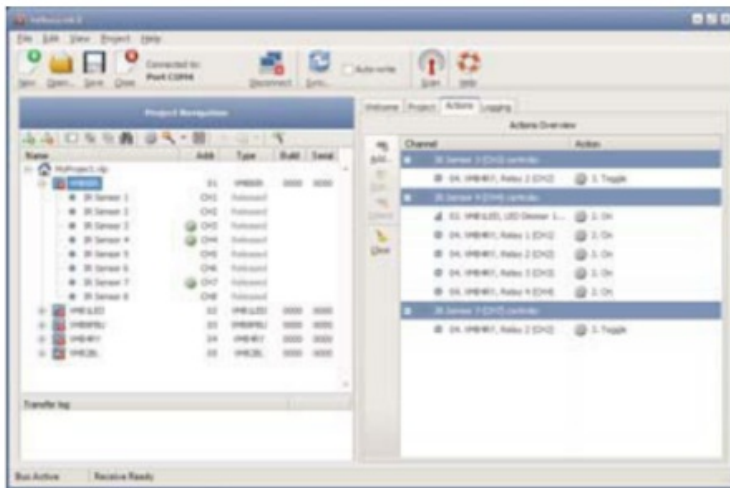
## Control functions



- **A.** Increase
- **B.** decrease
- **C.** next day
- **D.** previous day
- **E.** Change the status of the alarm into ON or OFF
- **F.** increase the hour
- **G.** decrease the hour
- **H.** increase the minutes
- **I.** decrease the minutes
- **J.** next month
- **K.** previous month
- **L.** No function

## USE

To all push buttons actions can be attributed to control relay channels e.g. switch them on or off, dim lights, open or close window shutters and so on ... Configuration can only be done through the Velbuslink software.

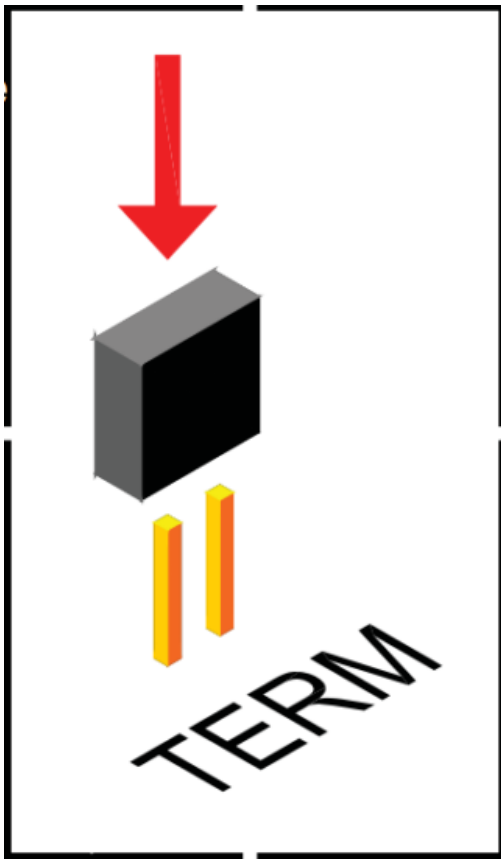


## REMARK WHEN USING:

Normally only 2 'TERM' terminators must be used in a complete Velbus® installation.

Usually there is a terminator in the module inside the distribution box and one in the module at the end of the longest cable.

On all other modules, the terminator must be removed.



## VELBUS HOME CENTER INTERFACE SERVER



The VMBHIS is the hardware solution for Stijnen Solutions Home center. A ready for use package to control your Velbus installation via iPhone/iPad or Windows.






Modifications and typographical errors reserved  
 © Velleman nv. HVMBLCDWB – 2013 – ED1



## Documents / Resources

	<p><a href="#">velbus VMBLCDWB 4 Button Control with LCD Display</a> [pdf] User Manual  VMBLCDWB, 4 Button Control with LCD Display, VMBLCDWB 4 Button Control with LCD Display</p>
---	---

[Manuals+](#).