



## VEKOOTO T8 4 Channels Camera System with MP5 Instruction Manual

[Home](#) » [VEKOOTO](#) » VEKOOTO T8 4 Channels Camera System with MP5 Instruction Manual 

VEKOOTO T8 4 Channels Camera System with MP5 Instruction Manual



## Contents

- 1 Product Introduction
- 2 Before Use Matters Needing Attention
- 3 Product Specifications
- 4 Product List
- 5 Product Structure
- 6 Initial setting of recorder
- 7 Main Interface System Operation Instructions
- 8 Exception problem resolution
- 9 Documents / Resources
- 10 Related Posts

## Product Introduction

Dear users, thank you for choosing our company to serve you. The more familiar you are with your video monitoring, the easier it will be for you to use it. Therefore, please read this manual carefully before using it. This is a product that keeps you away from traffic accidents. It has many functions in one. Four wide-angle cameras installed inside/outside the car body form a 360-degree surveillance video. Directly and clearly displayed on the four-way split screen of the all-in-one machine. It can not only directly see the obstacles and pedestrians in the blind area of the vehicle, but also efficiently reduce the occurrence of traffic accidents such as collision, scraping and so on. Moreover, the circular video is saved in the memory card of the all-in-one computer, which is convenient for video forensics. This product has MP5 multimedia function, support local music, video playback, support Bluetooth connection, FM radio transmission. This manual details the installation, operation, product parameters and matters needing attention of the product; Before using the product, please carefully review this manual and properly keep the product, so that it can better meet your needs and serve you for a long time.

## Before Use Matters Needing Attention

1. Drivers are forbidden to operate this product while driving, so as not to distract their attention and affect driving safety;
2. replace the accessories or refit the power line, please find a professional operation and installation;
3. Do not disassemble and decompose the product privately to avoid affecting the warranty scope;
4. As our company will continue to research and develop products and innovate technologies, we may make some changes or upgrades to the software or hardware, which may result in inconsistency with the instructions. We will not issue any change notice. The Company reserves the right to change the technology directly without prior notice.

## Product Specifications

Items	Function Brief			Performance Evaluation
System		Manipulation language		English
	Interface			Graphical menu operation
	Mode of operation			Touch mode

Video input	Video input	4 channels AHD video input
	Video mode	Default boot recording, no seconds lost
	Video format	2K H.264 video, 4 channels of video are saved separately
Video display	Real-time display	10.36 inch IPS Screen 1600*720
	Video display	10 multi-view display modes
	Local playback	Local playback, check at any time
	screen protector	Can be set to 1 minute/5 minutes/off
Local entertainment	Music	Support to play local music on U disk, multiple loop playback methods
	video	Supports playback of U disk local video, supports full-screen playback
Trigger display	Touch screen display	Automatically switch to the corresponding camera view
Multimedia	Bluetooth	Support Bluetooth connection to mobile phones, play mobile phone music and other functions
	FM	Support FM transmission, connect to the car radio to play music
Monitor	Parking monitoring	Optional 1 hour/3 hours/5 hours surveillance video
The video store	TF card	CLASS10 U1, minimum 32GB, maximum support 256GB
Audio part	microphone	Support microphone recording, the menu can be set to close
	<del>voice control</del>	<del>Support voice control, the menu can be set to close</del>
Power part	Power input	Support 9V~36V wide voltage, with car-level surge, overload, Overvoltage, undervoltage, short circuit and other power supply protection circuits, suitable for variousThe power environment of the vehicle.

Overall power consumption	Engine detection	ACC detection line
	4 CH recording	Less than 10W (screen display, 4-channel camera recording)
Others	Work Temperature	-20~65 °C
	Cooling method	Passive cooling
	Reversing line	Adjustable
	Video duration	Video recording duration can be set
	Channel trigger delay	Turn signal delay can be set
	Screen mirroring	The four-channel picture supports mirror display, and the menu can be set
	License plate setting	Support

## Product List



1. 10.36 Inch Monitor
2. Bracket & Screws
3. 15m Cable
4. Sticker
5. Side Camera
6. Side Camera

7. Front Camera
8. Rear Camera
9. 5m Cable
10. 5m Cable
11. 5m Cable
12. Power Harness
13. User Manual

## Product Structure



## Operating instructions for host keys and interfaces

NO	Name	operating instructions
1	TF Card Reader	TF memory card slot, please follow the correct direction to install.
2	USB	U disk slot, after inserted can play its U disk video and music.
3	Display	HD IPS display with touch function.
4	Power Button	Power ON / OFF

## Precautions:

1. Insert the memory card: Please insert the memory card in the correct direction as indicated by the memory card gap on the device. Press the memory card until it is inserted in place with a click. Because the recorder's video storage runs at a high speed on the card, note that the memory card must be a high-speed card (CLASS10 U1 or above). Note: Please format and match the new card with the machine for the first time.
2. Take out the memory card: press the memory card to pop up the slot.  
**Note:** Do not remove or insert the memory card when the device is turned on, in order to avoid damage to the memory card or loss of files.
3. **Recorder installation:**  
Please use the original factory standard power cord to take power from the auto power safe box for the

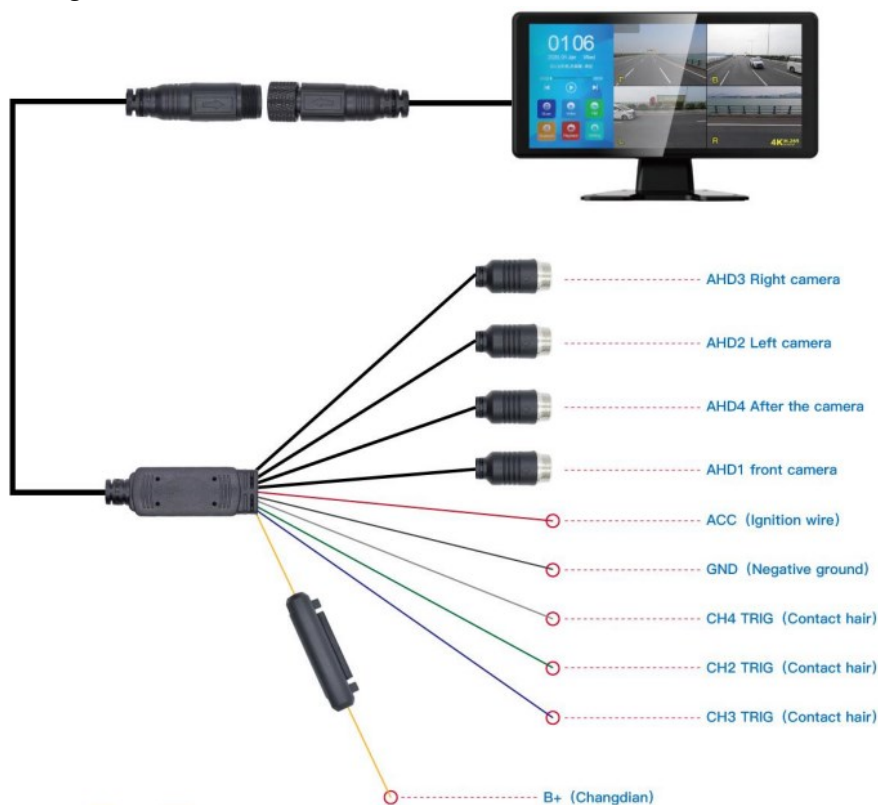
machine to work;

**Note:** the installation needs professional construction personnel to install the operation, non-professionals do not refit without authorization; Otherwise, you will bear the consequences!

#### 4. Recorder installation:

The quality of TF card has a great impact on the stability of video recording. In order to record video safely, please use a SD card from a major brand such as SanDisk, Kingston, Toshiba, Samsung. Speed certification must be at least U3

#### Wiring instructions:



**Power cord:** ACC, B+, GND, respectively connected to the corresponding fuse box interface;

The red and yellow lines must be connected together to light the cigarette.

**Trigger line:** AHD1, AHD2, AHD3 and AHD4 are respectively connected to the corresponding 9~ 36V trigger Signal source, such as reverse, turn signal, and the corresponding camera wiring number,

**Lens wiring:** connect the camera according to the serial number on the line;

#### Initial setting of recorder

##### Main interface of touch screen

Four-way monitoring, setting, and video playback (as shown in the figure below)





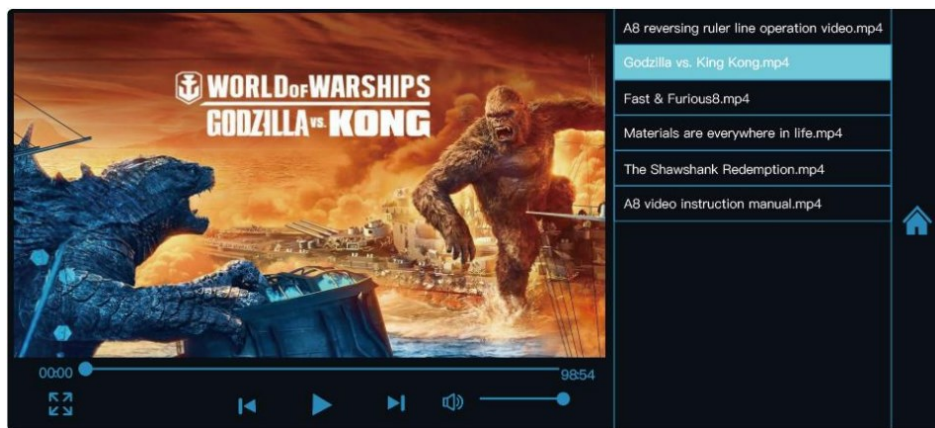
In standby state, tap the bottom of the four-way screen to display the function menu bar, which is :

1. In turn. Video recording
2. Brightness adjustment
3. Volume adjustment
4. Voice command
5. Recording
6. Multiple split screen switching
7. Music playback/pause.

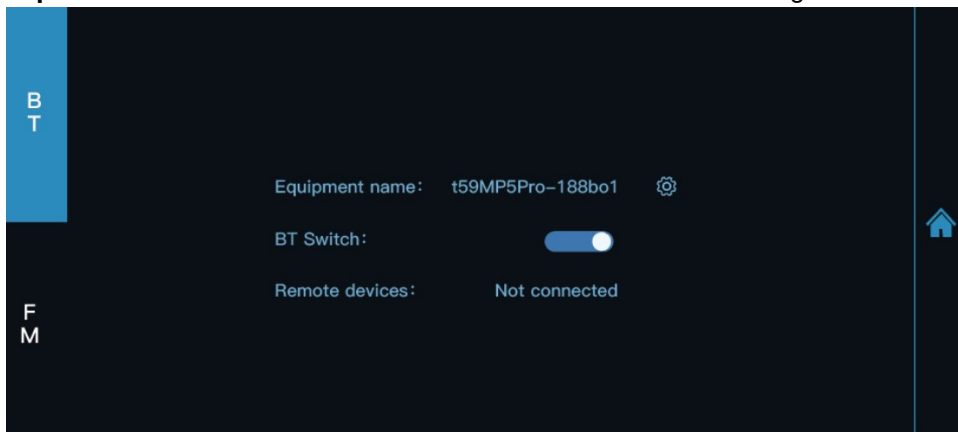
#### Touch screen button description



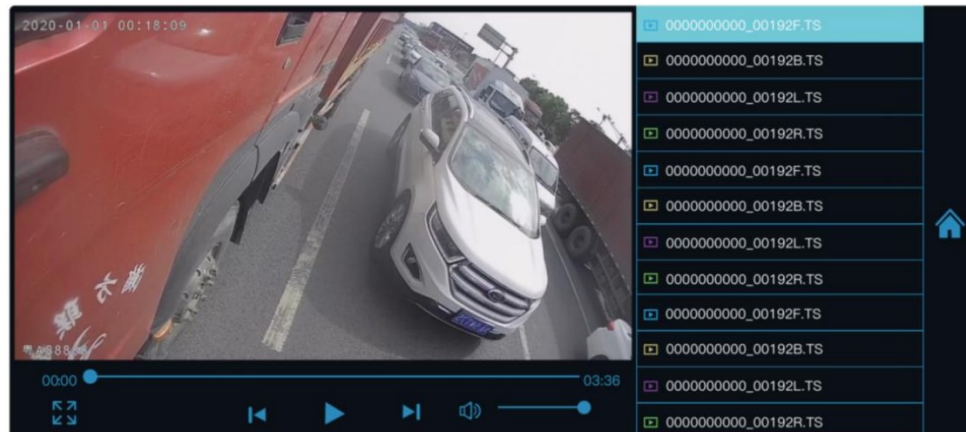
Tap the "video" button Local (USB) entertainment video playback



Tap the“Bluetooth” button Bluetooth function connection Settings



Tap the“video playback” button: View the four-way surveillance storage video



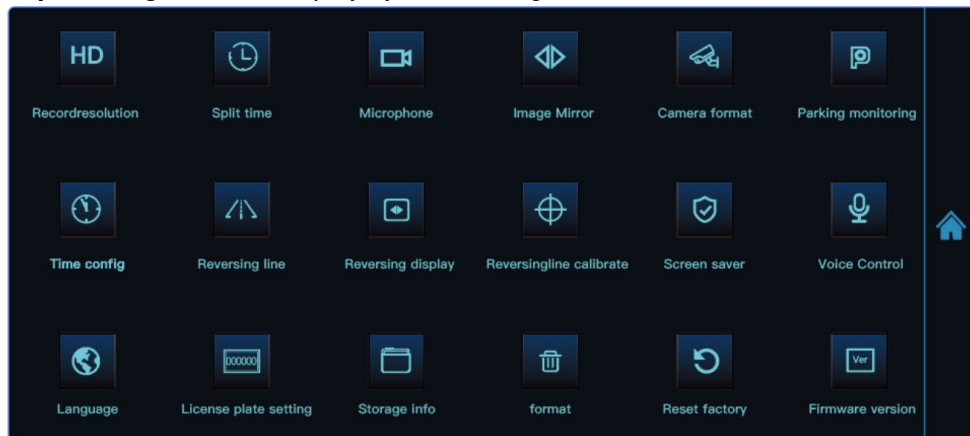
Tap the“FM” button Enter FM emission regulation

(Note: No FM function now, we will update FM and GPS function in it in the near future)





Tap“Setting” button Display system setting interface



## Main Interface System Operation Instructions

### Video setting



**Tap the arrow recording button to Start/Stop recording;** When there is a memory card inserted, there will be a memory card icon; The small red dots indicate that the video is being recorded.

### Switch to split screen mode

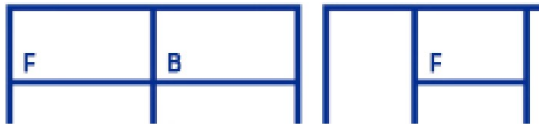


**Tap the split screen button of the arrow in the figure to switch different split screen modes;**  
Quickly switch split screen mode, all modes are described as follows;

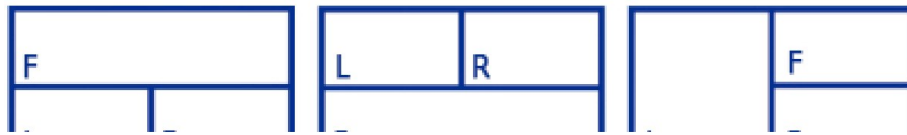
#### Dichotomy model



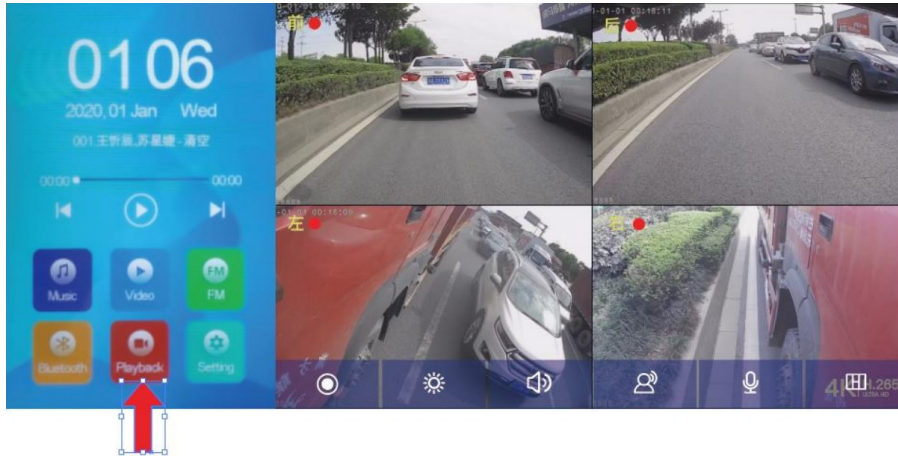
## Tripartite model



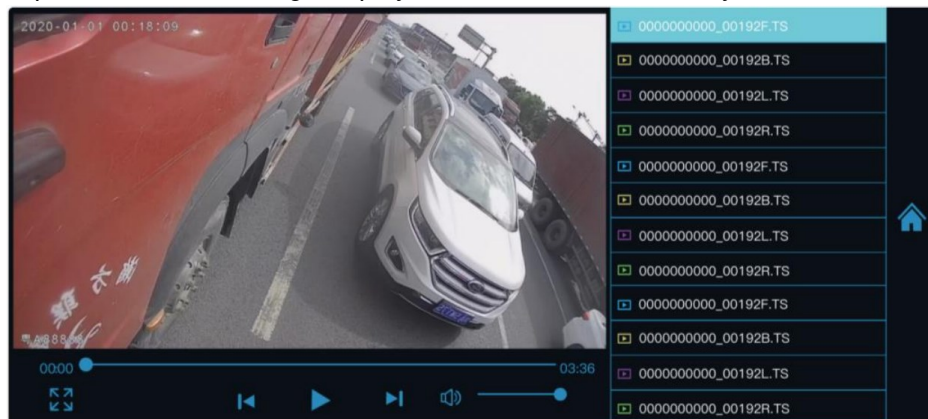
Quadripartite model:



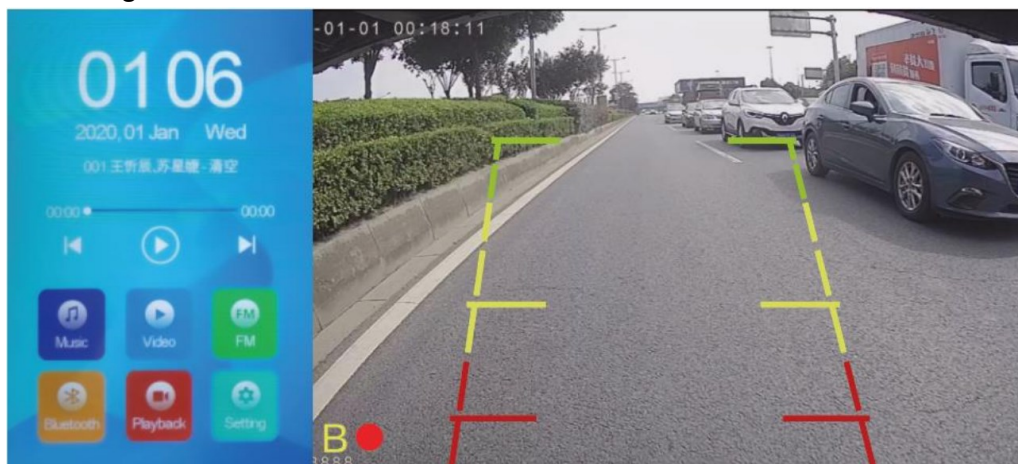
## File browsing/playing interface:



Tap the arrow in the diagram“playback” button View four-way surveillance video playback:



## Reversing mode



When the reversing signal line is triggered, it will automatically display the rear view camera view and the reversing line at the same time.

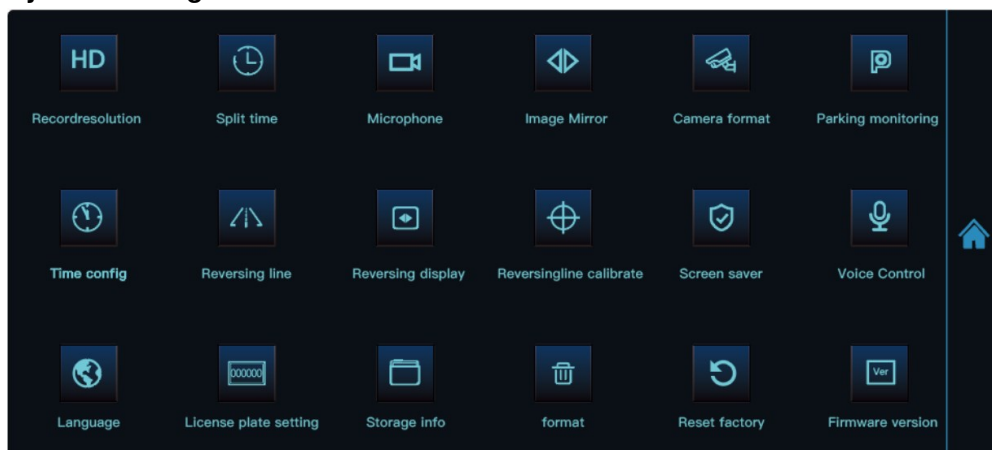
When the signal disappears, it switches back to the multi-camera display mode.



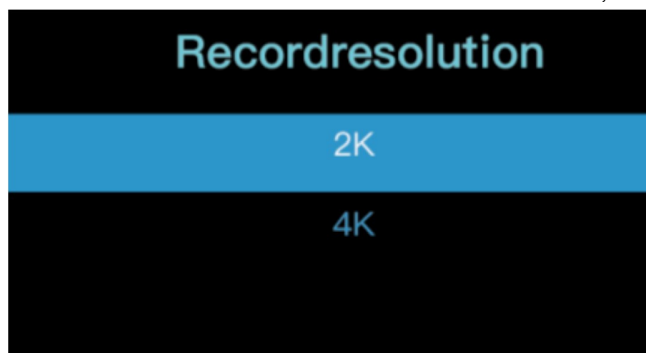
### Reversing rod line adjustment:

Find it in the System Settings screen ico, Tap into the adjustable reversing wire. Direct click and hold the reversing wire You can adjust the size and “save the calibration” after completion.

### System Settings



**Recordresolution** Set the resolution of the video;



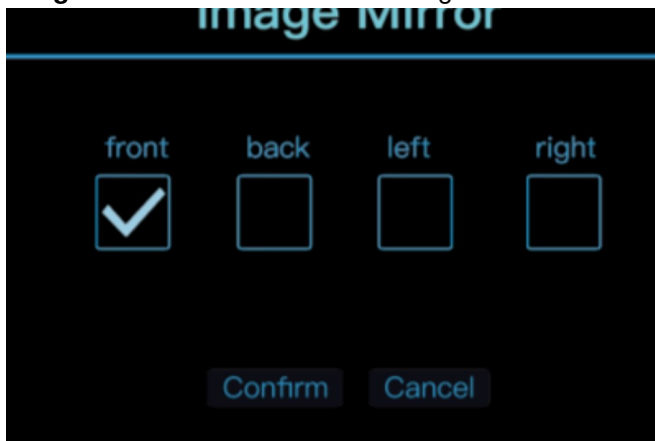
**Split time** Set the length of each video file;



**Microphone** Sets whether to record sound;



**Image Mirror** Turn ON/OFF the image mirror function of the front and back viewing lens;



**Camera Format** 720P NTSC,720P PAL,1080P PAL(Default1080P PAL)



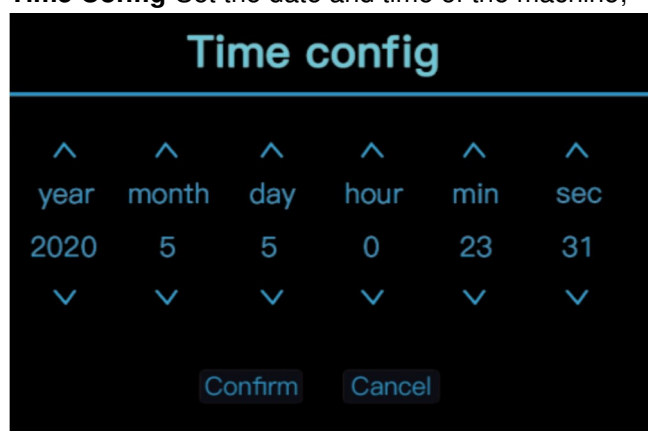
**Parking Monitoring** Sets how long to delay shutdown without ACC;



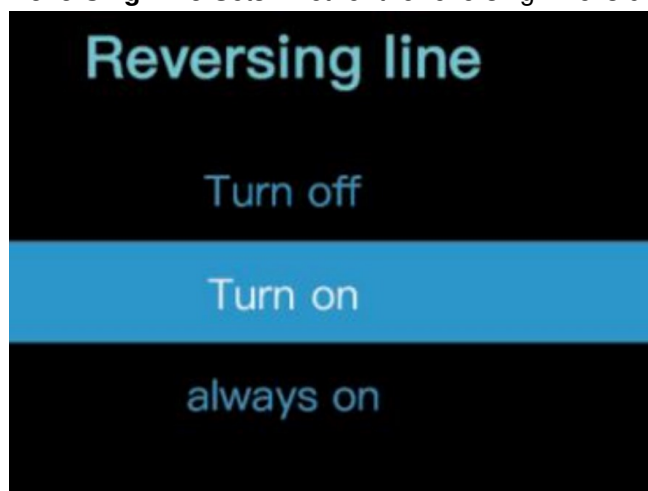


**Note:** The function cannot be used when the car battery is completely disconnected.

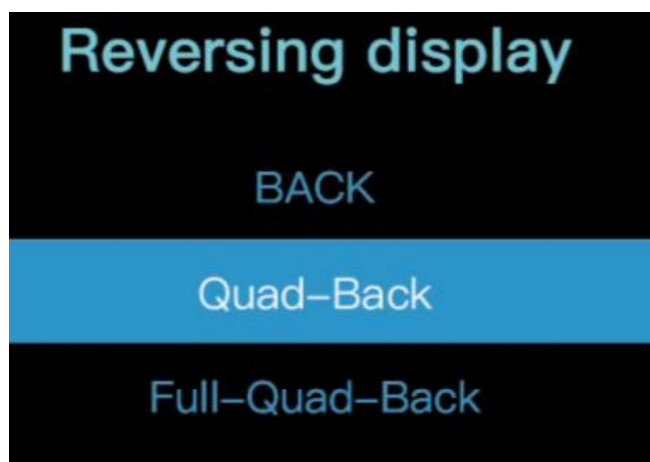
**Time Config** Set the date and time of the machine;



**Reversing Line** Sets whether the reversing wire is displayed;



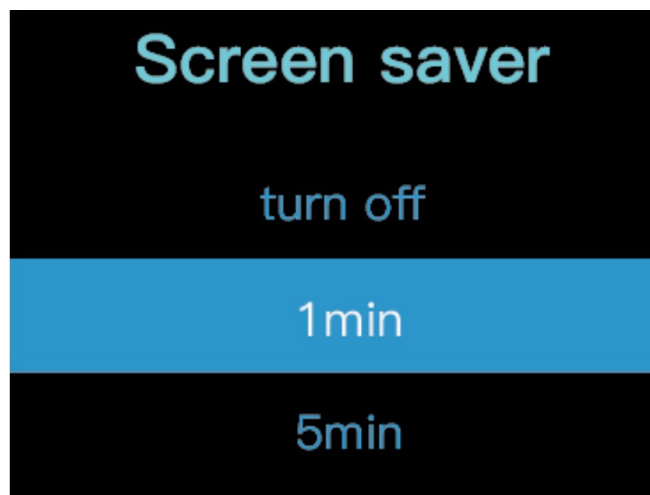
**Reversing Display** When setting reversing, multi-screen/single screen is displayed, usually single screen is selected;



**Reversingline Calibrate** The size of the reversing line can be manually edited. After editing, press the “OK” button to save;

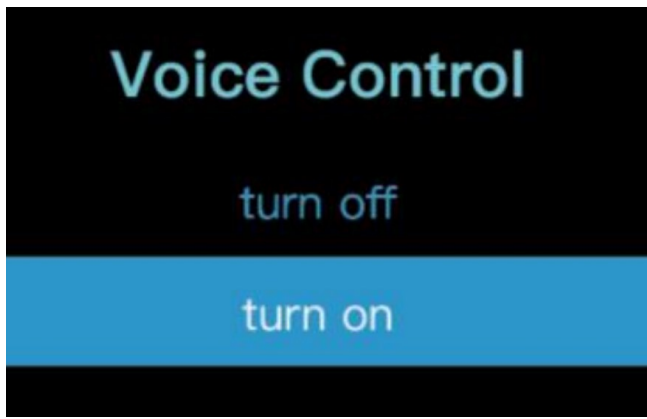


**Screen Saver** Set the time when the screen will automatically turn off when there is no operation;

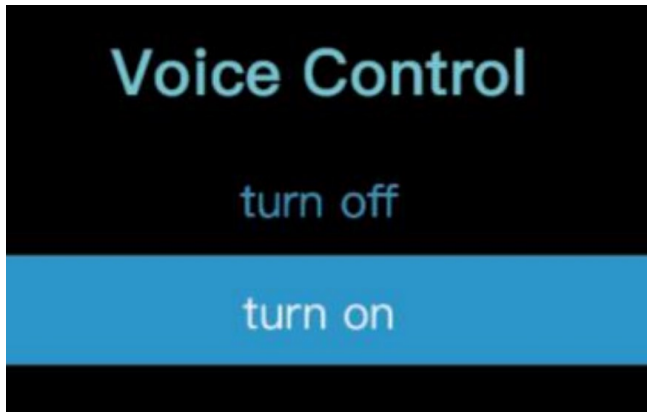


**Voice Control** Voice Command ON/OFF; Without this Function





## Language



**License plate setting** Sets the license plate number displayed when recording;



**Storage info** View the memory card's available capacity and total capacity;



**Format** Format SD-CARD ;



**Reset factory** Restore factory system Settings;



**Firmware version** System Software Version;

## Exception problem resolution

Under normal operation, if the product has abnormal problems, please refer to the method to solve

### 1. Unable to boot

Check whether the line is installed correctly;Or take out the memory card and reboot.

### 2. The resulting film is not clear:

Please check the lens for dirt or finger marks. Please clean the lens surface before shooting and keep the lens clean and tidy.

### 3. The results are sometimes mixed:

Camera-shooting effect and the light environment has a great relationship, such as the strength of the backlight smooth light will cause the video effect is different.

#### 4. Automatically stop the camera or do not cycle the camera:

Due to the huge data of HD video, the memory card may not be able to read and write fast enough. Please use a high-speed TF card, such as the high-speed card of C10.

### Warm Prompt

1. Dash-recorder is an instrument for recording video and sound information of vehicles on the road. In case of accidents, it is only used for auxiliary reference to avoid misunderstanding by users.


#### 2. GY KWW

The machine must be in normal working condition to record the audio and video recorded by the car recorder for reference only. Our company shall not be jointly and severally liable for any loss caused by the loss of bad file data under abnormal conditions.

3. The following circumstances, no warranty

1. Human damage to product quality;
2. Serious failure caused by failure to follow operation instructions;
3. Failure caused by unauthorized dismantling of the original parts;
4. Irresistible damage, such as voltage instability, water erosion, knock damage, etc.

### Documents / Resources

	<p><b><a href="#">VEKOOTO T8 4 Channels Camera System with MP5</a></b> [pdf] Instruction Manual T8, B0C2K3CRTV, B0BC7K2SXK, B0BCW76WV1, B0BQ6RRFP5, T8 4 Channels Camera System with MP5, 4 Channels Camera System with MP5, T8 4 Channels Camera System, 4 Channels Camera System, Camera System</p>
---	---