

Vekesen D02 Music Remote Controller Scrolling Ring



# Vekesen D02 Music Remote Controller Scrolling Ring User Manual

[Home](#) » [Vekesen](#) » Vekesen D02 Music Remote Controller Scrolling Ring User Manual 

## Contents

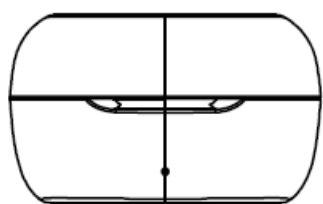
- [1 Vekesen D02 Music Remote Controller Scrolling Ring](#)
- [2 Packing List](#)
- [3 Power on / off](#)
- [4 Connect the cell phone](#)
- [5 Charging Diagram](#)
- [6 Specification](#)
- [7 FCC STATEMENT](#)
- [8 CONTACT](#)
- [9 Documents / Resources](#)
  - [9.1 References](#)

# Vekesen

**Vekesen D02 Music Remote Controller Scrolling Ring**



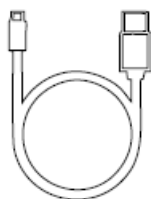
### Packing List



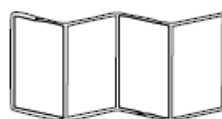
Charging Case



Scrolling Ring



Charging Cable



User's Manual

### Power on / off

power button



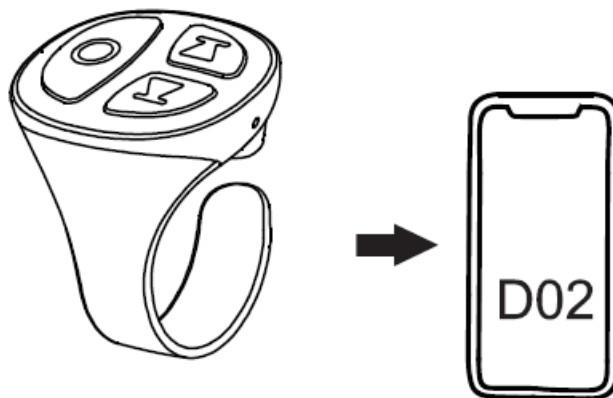
#### **Power on**

Press and hold on the power button for 1 second the red and blue lights flash alternately

#### **Power off**

Press and hold on the power button for 5 seconds The red light keeps on for 2 seconds and then goes off when the ring powers on

#### **Connect the cell phone**

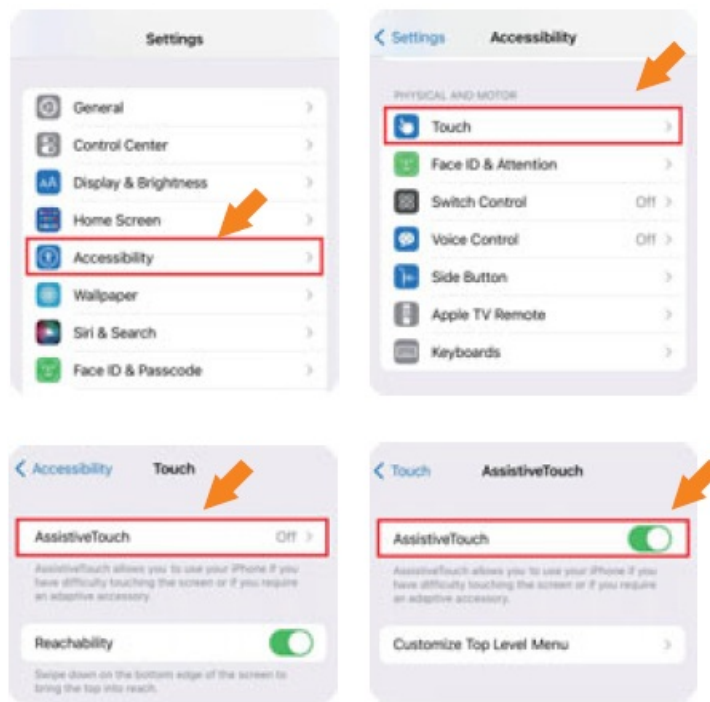


#### **First Connection**

The ring automatically enters the pairing state when it is powered on. At the same time please turn on the Bluetooth switch of your phone, then search for D02 in the Bluetooth list and click to connect If you can't find the BT name Please turn off the BT switch and turn it on again to research Automatic Connection The ring automatically connects the last connected device after Power on

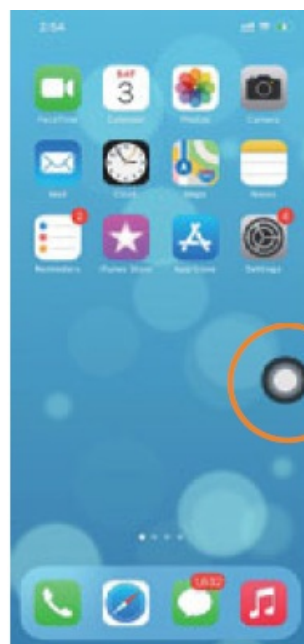
#### **iPhone / iPad Settings**

iPhone and iPad need to turn on the Assistive Touch button before it can be used normally Please see the below picture



## Notes

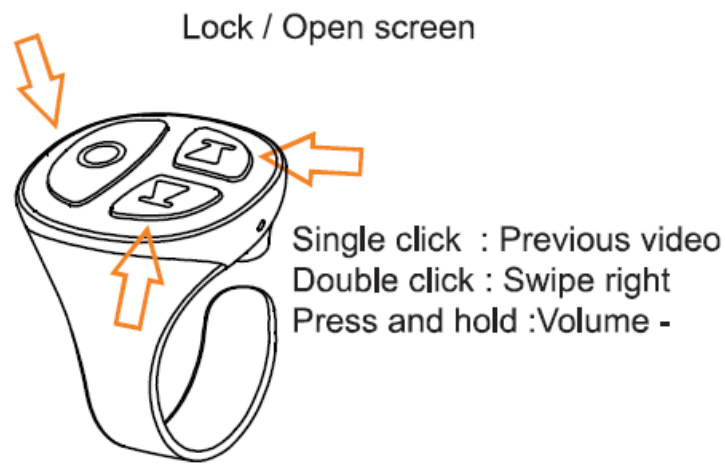
1. Make sure the IOS software of your device is above 14.8
2. If you still can't control the TikTok video after the touch button is turned on Please restart your device



**Once you're done  
a dot appears  
on the screen**

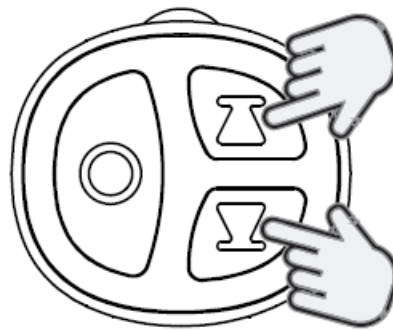
## Function (Video Mode)

- Single click: Pause
- Double click: Like
- Triple click: Continuous like on / off
- Press and hold for 1 second to release:



- **Single click:** Next video
- **Double click:** Swipe light
- **Press and hold:** Volume +

### Take Picture / Record Video



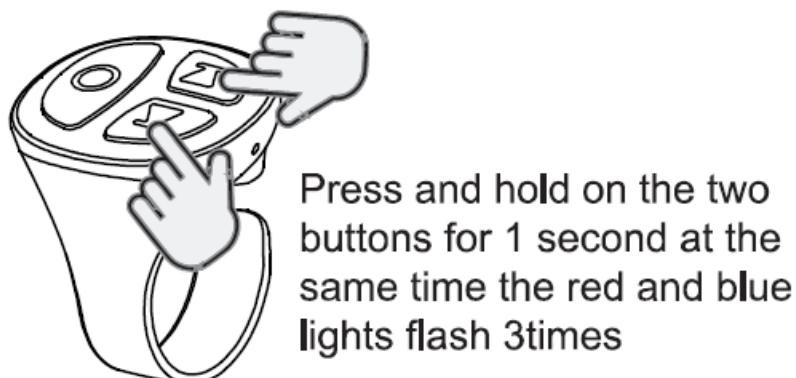
In photo or video recording mode on your phone, Press any up or down button for seconds to take a photo or record video and end recording video Single clicks the left big button to focus

### Notes

1. just support the original camera and various beauty cameras to take photos and record videos
2. When working Tiktok, long press is the function of volume increase and decrease

### Switch mode

Switch between video mode and music mode

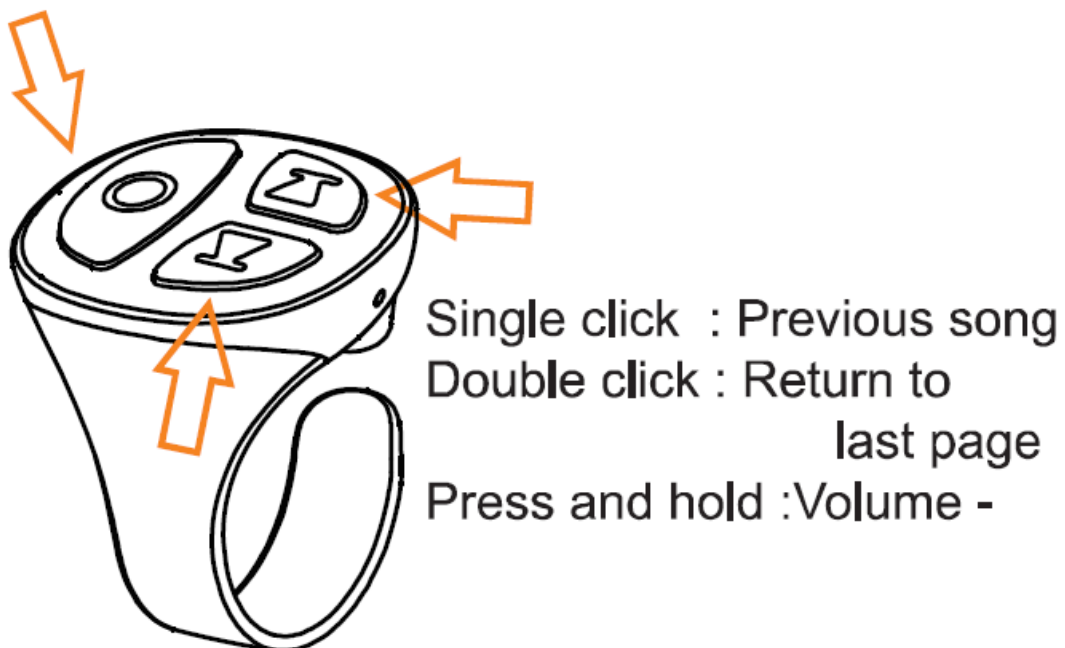


## Notes

1. The initial mode is TikTok mode
2. When the ring is turned off, the last mode is saved
3. Page 7 shows how to operate in video mode
4. Page 10 shows how to operate in music mode

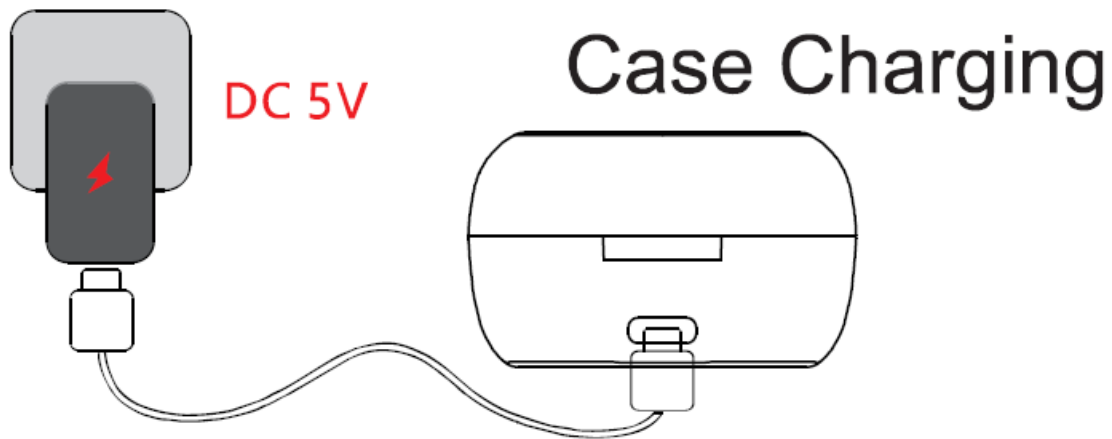
## Function (Music Mode)

- Single click : Play / Pause / Answer / hang up call
- Double click : Call the last call
- Press and hold for 1 second: Refuse the call
- Press and hold for 1 second to release: Wake up / Undo Siri

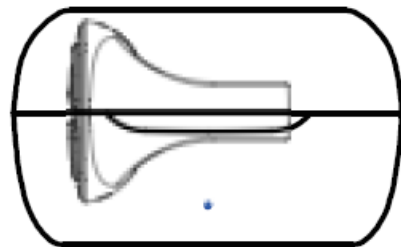


- Single click : Next song
- Double click : Lock or Open screen
- Press and hold :Volume +

## Charging Diagram



Red light flashing Slowly	Keep the red light on



## Ring Charging (In Case)

Keep the red light on	The red light goes out

### Automatic Shutdown

1. The ring automatically shuts down if it is not paired or if it is not paired again after 5 minutes of disconnection
2. The ring was connected to the phone for 30 minutes without any operation then the ring automatic shutdown

### Question Guide

1. It doesn't work on iPhone and iPad?  
iPhone and iPad need to turn on Assistive touch button before it can be used normally.
2. How to reset factory Settings?  
Press the power button five times quickly .
3. It cannot be used with beauty cameras?  
It only work the original camera and some beauty cameras to taking photos and recording videos.
4. iPhone and iPad cann't swip up and down normally or can only pause the video after turning on the touch

button and reset

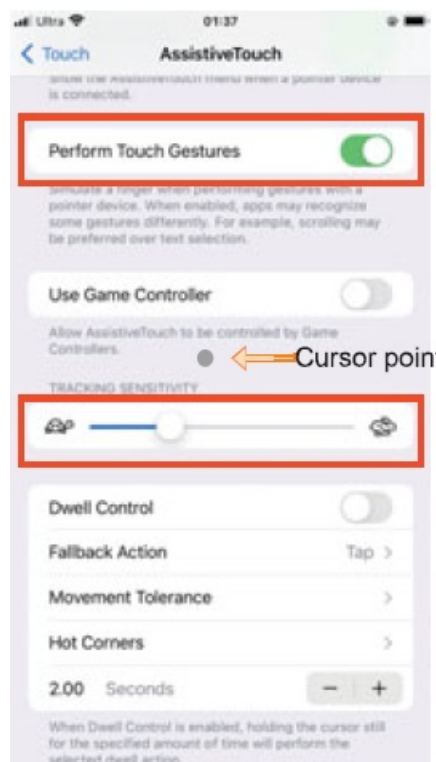
### Option 1

Check that the cursor point is in the middle of the screen after the ring is connected. If not in the middle, the solution is to slightly drag the “tracking Sensitivity Slider” in the following figure to the left or right. Press the power button of the ring to confirm every adjustment until the cursor point reaches the middle position or nearby and make sure that the “Perform Touch Gestures” in the right figure is turned on and you can swipe the video up and down.

### Option 2

As the following operations in sequence

1. Power off the ring and restart your cell phone
2. Turn on Assistive touch and appears a dot on the screen
3. Turn on the Bluetooth and connect the ring



## Specification



The Ring	
Bluetooth Version	V 5.0
Bluetooth Name	D02
Password	0000
Distance	33 feet
Battery Capacity	45 mAh
Input	5V / 40 mA
Charging time	About 1 hour
Charging Case	
Battery Capacity	400 mAh
Input	5V / 300 mA
Charging time	About 2 hours

## FCC STATEMENT

This device complies with part 15 of the FCC Rules. Operation is subject to the following two conditions:

1. this device may not cause harmful interference, and
2. this device must accept any interference received, including interference that may cause undesired operation.

Any changes or modifications not expressly approved by the party responsible for compliance could void the user's authority to operate the equipment.

**NOTE:** This equipment has been tested and found to comply with the limits for a Class B digital device, pursuant to Part 15 of the FCC Rules.

These limits are designed to provide reasonable protection against harmful interference in a residential installation. This equipment generates, uses and can radiate radio frequency energy and, if not installed and used in accordance with the instructions, may cause harmful interference to radio communications. However, there is no guarantee that interference will not occur in a particular installation. If this equipment does cause harmful interference to radio or television reception, which can be determined by turning the equipment off and on, the user is encouraged to try to correct the interference by one or more of the following measures:

- Reorient or relocate the receiving antenna.
- Increase the separation between the equipment and receiver.
- Connect the equipment into an outlet on a circuit different from that to which the receiver is connected.

- Consult the dealer or an experienced radio/TV technician for help.

The device has been evaluated to meet general RF exposure requirement  
The device can be used in portable exposure condition without restriction


## CONTACT

- Email to support
- [1301547734@qq.com](mailto:1301547734@qq.com)
- (we will reply within 24 hours)



---

## Documents / Resources

	<a href="#">Vekesen D02 Music Remote Controller Scrolling Ring</a> [pdf] User Manual D02 Music Remote Controller Scrolling Ring, D02, Music Remote Controller Scrolling Ring, Remote Controller Scrolling Ring, Controller Scrolling Ring, Scrolling Ring, Ring
---	--

## References

- [User Manual](#)

[Manuals+](#), [Privacy Policy](#)

This website is an independent publication and is neither affiliated with nor endorsed by any of the trademark owners. The "Bluetooth®" word mark and logos are registered trademarks owned by Bluetooth SIG, Inc. The "Wi-Fi®" word mark and logos are registered trademarks owned by the Wi-Fi Alliance. Any use of these marks on this website does not imply any affiliation with or endorsement.