

Veise
VE07-L
Fingerprint
Smart Lock



Veise VE07-L Fingerprint Smart Lock Installation Guide

[Home](#) » [Veise](#) » Veise VE07-L Fingerprint Smart Lock Installation Guide 

Contents

- [1 Veise VE07-L Fingerprint Smart Lock](#)
- [2 Product Usage Instructions](#)
- [3 Frequently Asked Questions](#)
- [4 USER GUIDE](#)
- [5 How to Lock Unlock](#)
- [6 Definitions](#)
- [7 INSTALLATION INSTRUCTION](#)
- [8 Parts List](#)
- [9 Factory Default Settings](#)
- [10 Programming Guide](#)
- [11 Troubleshooting](#)
- [12 FCC Statement](#)
- [13 Documents / Resources](#)
 - [13.1 References](#)
- [14 Related Posts](#)

Veise

Veise VE07-L Fingerprint Smart Lock



Product Specifications

- **Product:** Smart Lock
- **Installation:** Door lock
- **Compatibility:** Standard doors
- **Material:** Metal
- **Color:** Silver
- **Power Source:** Battery-operated
- **Dimensions:** 5.5 x 3 x 1 inches

Product Usage Instructions

A. Determine Backset and Adjust the Latch

1. Hold the latch in front of the door hole with the latch face flush against the door edge.
 2. Check if the slotted hole is centered in the door hole.
- If YES, no adjustment is required, proceed to the next step.
 - If NO, rotate and pull the latch to extend it until the slotted hole is centered.

B. Install the Latch

- For chiseled doors: Use provided screws (J) to secure the latch.
- For not-chiseled doors: Use the drive-in collar (N) to install the latch securely.

C. Test Deadbolt Functionality

Use a screwdriver to test if the deadbolt works smoothly after installation.

D. Install Strike on the Door Frame

1. Ensure the hole in the door frame is drilled at least 1 inch deep.
2. Securely install the strike on the door frame using the provided hardware.

Important Safety Information

- **Caution:** Any unauthorized changes to the device may void its warranty and your authority to use it.
- **RF Exposure Information:** Maintain a minimum distance of 20cm between the device and your body during operation.

Frequently Asked Questions

Q: What should I do if the deadbolt does not work smoothly?

A: Check for any obstructions in the lock mechanism or misalignment during installation. Try lubricating the deadbolt for smoother operation.

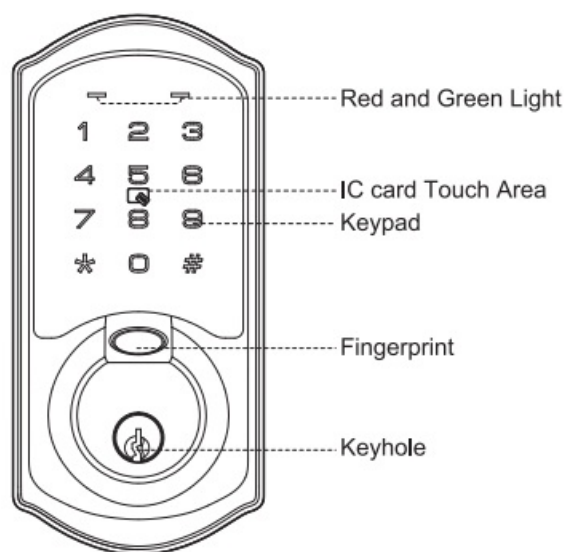
Q: Can I install this smart lock on a non-standard door?

A: This smart lock is designed for standard doors. For non-standard doors, additional modifications may be required for proper installation.

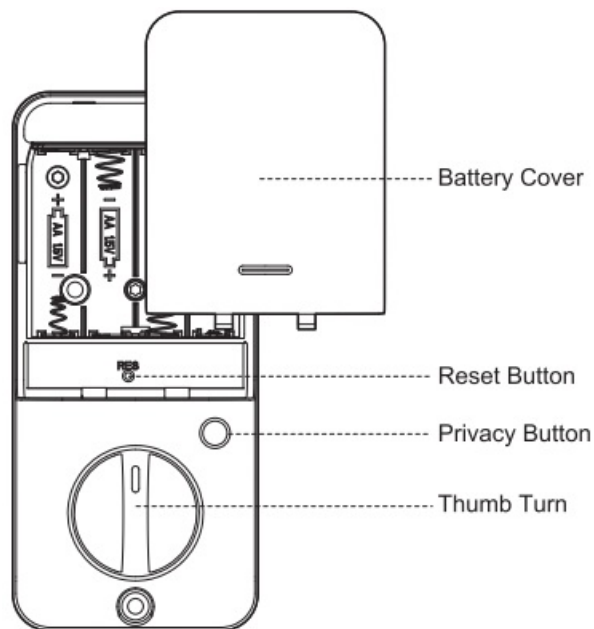
- Thank you for purchasing our products. Please review this manual thoroughly before operating your device. All pictures in this manual are for illustration purposes only. Actual products may vary due to product upgrades.
- **IMPORTANT:** The DDLock App is required to operate the lock. After the lock is properly installed, the first one who registers and pairs the lock will be the administrator.

USER GUIDE

At a Glance

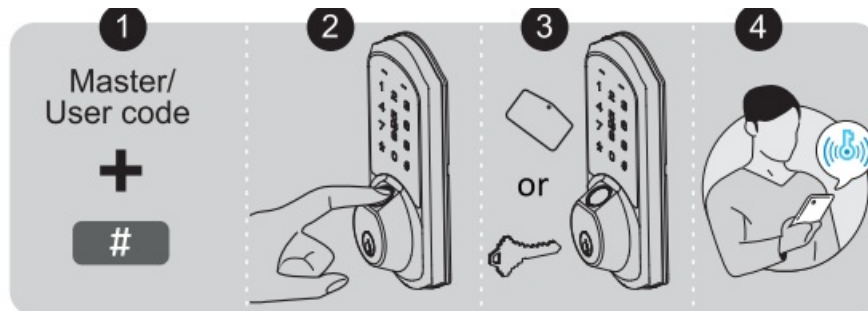


Interior Assembly



How to Lock Unlock

UNLOCK the door from the outside



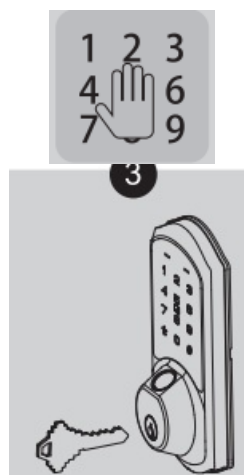
LOCK the door from outside

- **Auto Lock Mode**

- In Auto Lock mode, the bolt will extend out automatically in 5 seconds after unlocking.

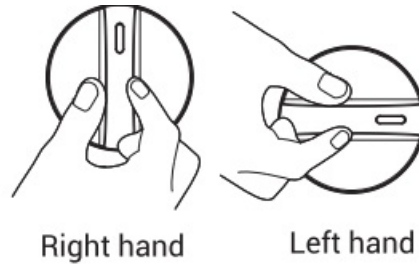
- **Manual Mode**

- Press **#** on the keypad for 2 seconds



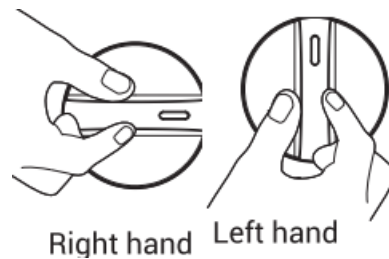
UNLOCK the door from the inside

- Rotate the thumb turn to the Unlock position.



LOCK the door from inside

- **Auto Lock Mode**
 - In Auto Lock mode, the device will be locked automatically.
- **Manual Mode**
 - Rotate the thumb turn to the Lock Position.



Definitions

Master Code

- The default master code is 123456.
- Before pairing your lock in the DDLock App, please do not change the default master code.
- After pairing successfully, the master code will be changed to a random 7-digit number, and you can change it to your master code in the App(Settings > Basics > Admin password).

Auto Lock & One-touch Lock

- Automatically locks the deadbolt after the door closes in 5 seconds.
- Auto Lock is disabled by default. The Auto Lock time can be customized between 1 and 900 seconds.
- One-touch Lock is pressing and holding “#” on the touch keypad for 2 seconds to lock from outside.

Private Mode

- Press and hold the “Privacy button” on the inside panel for more than 2 seconds to enable Private Mode.
- Press the “Privacy button” once to disable Private Mode.
- In Private Mode, it’s unable to unlock by Password, Fingerprint, or IC cards. Bluetooth, Physical Key, and Admin password unlocking are available.

Wrong Entry Limit

- After 5 times unsuccessful attempts at entering an invalid password, the device will shut down for 2 minutes.

Passage Mode

- Enable Passage Mode, the lock will stay Unlocked until it's locked manually.
- In Passage Mode, Auto-lock will be disabled.

Anti-peeping password

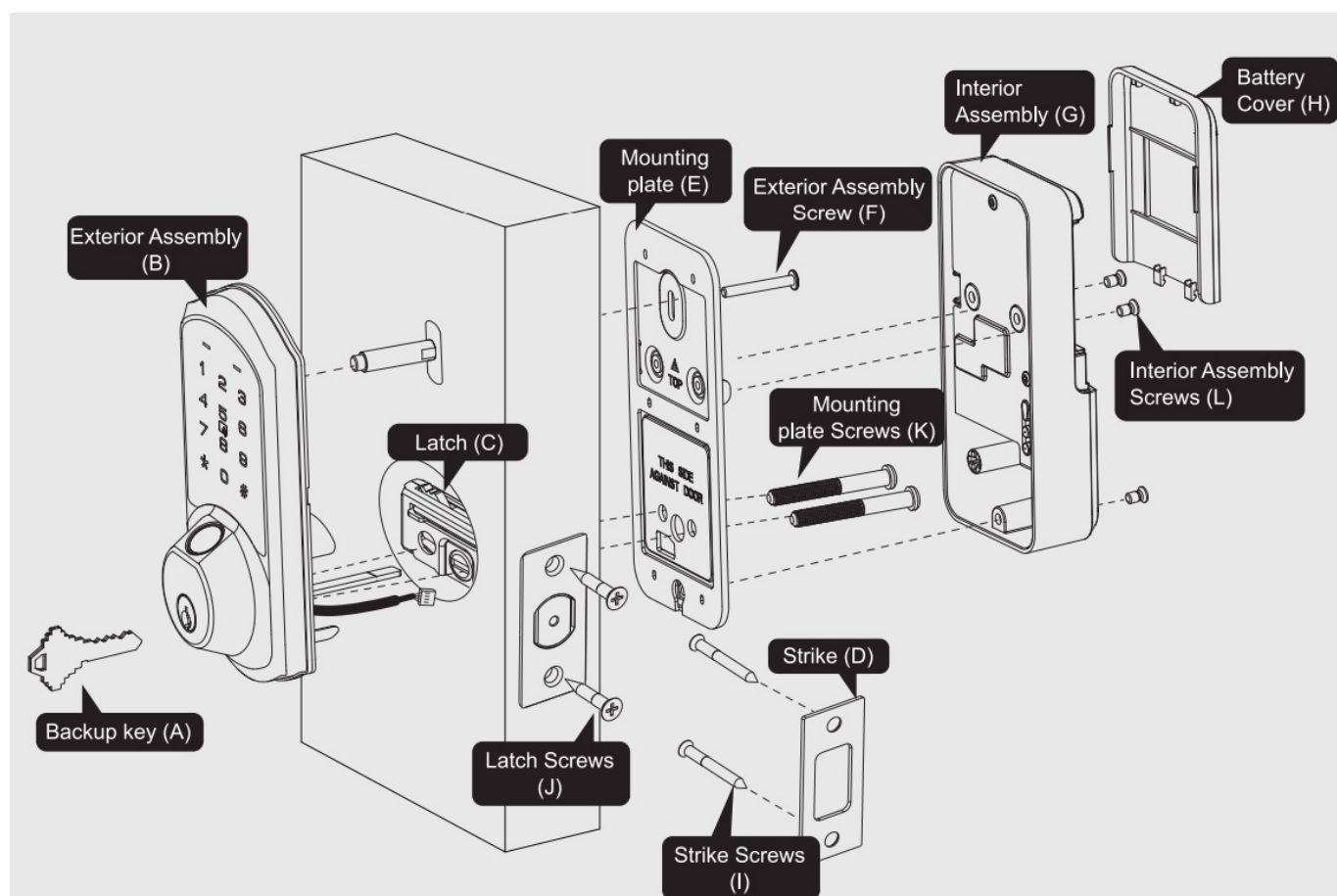
- Entering random numbers before or after the correct password will also unlock the door, which can prevent the password from being exposed. The length of the anti-peeping password should be within 16 digits.

83618 137192 14710


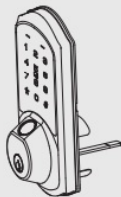
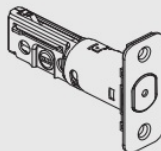


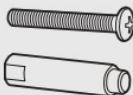
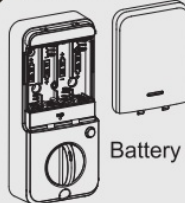







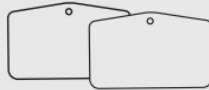
password

Random digits

INSTALLATION INSTRUCTION

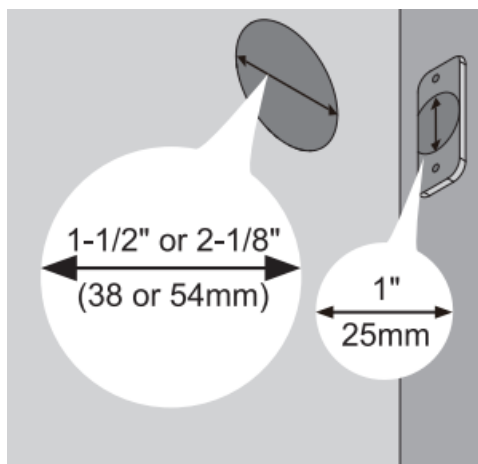


Parts List

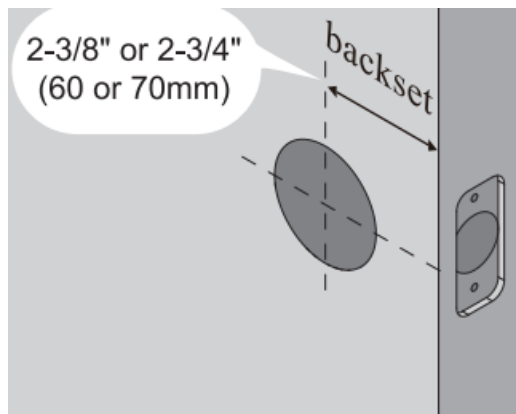
A Backup Key x2 	B Exterior Assembly x1 	C Latch x1 	D Strike x1 
E Mounting Plate x1 	F Exterior Assembly Screw (Optional) 	G Interior Assembly x1  H Battery Cover x1 	I Strike Screws x2  J Latch Screws x2 
K Mounting plate Screws x2 	L Interior Assembly Screws x3  M Reset Tool x1 	N Drive-In Collar (Optional) 	O IC card x2 

STEP 1 Prepare the door and check the dimensions

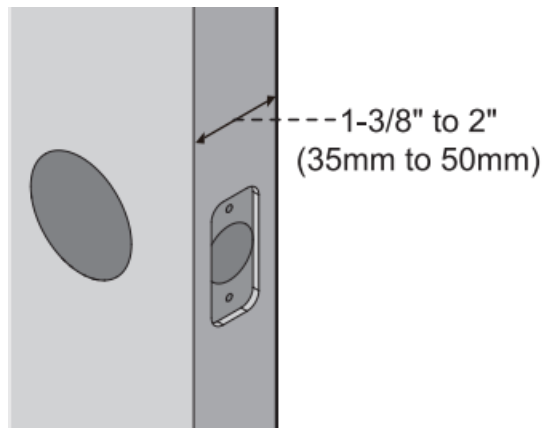
- **A** Measure to confirm that the hole in the door is 1-1/2" or 2-1/8" (38mm or 54mm) Measure to confirm that the hole in the door edge is 1" (25mm).



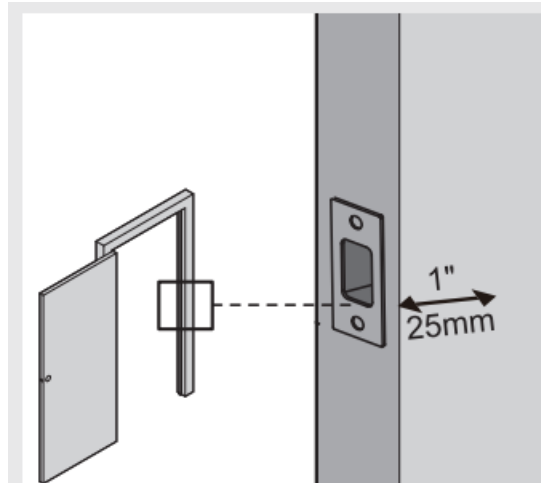
- **B** Measure to confirm that the backset is either 2-3/8" or 2-3/4" (60 or 70mm)



- **C** Measure to confirm that the door is 1-3/8" to 2" (35mm to 50mm) thick.



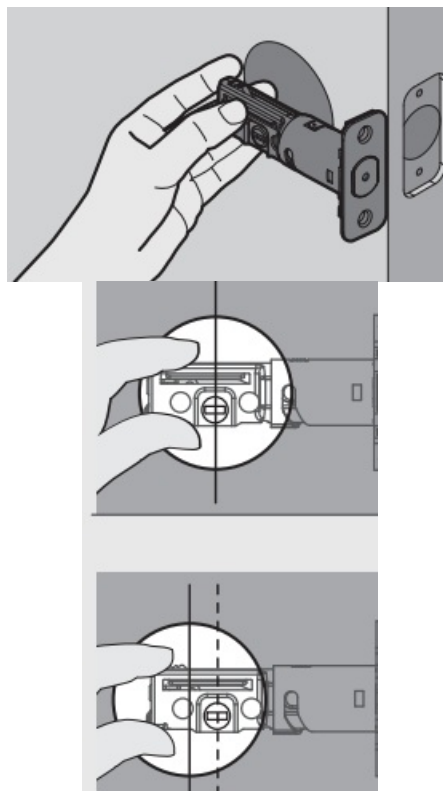
- **D** Make sure the hole in the door frame is drilled a minimum of 1" (25mm) deep, to leave enough space for the deadbolt to extend into the door frame when the door is locked.



- **Notes:** Make sure the door frame is aligned with the door. There are no obstructions stuck in the door frame.

STEP 2 Install the latch and strike

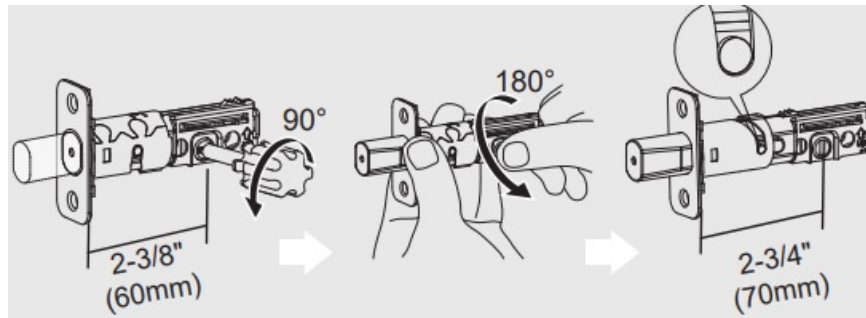
- **A** Determine backset and adjust the latch



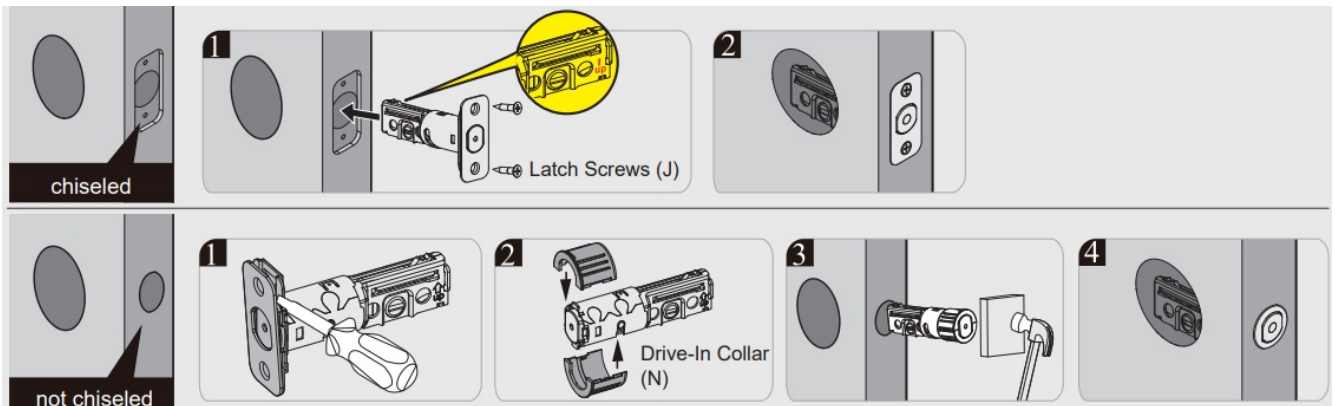
- Hold the latch in front of the door hole, with the latch face flush against the door edge. Is the slotted hole

centered in the doorhole?

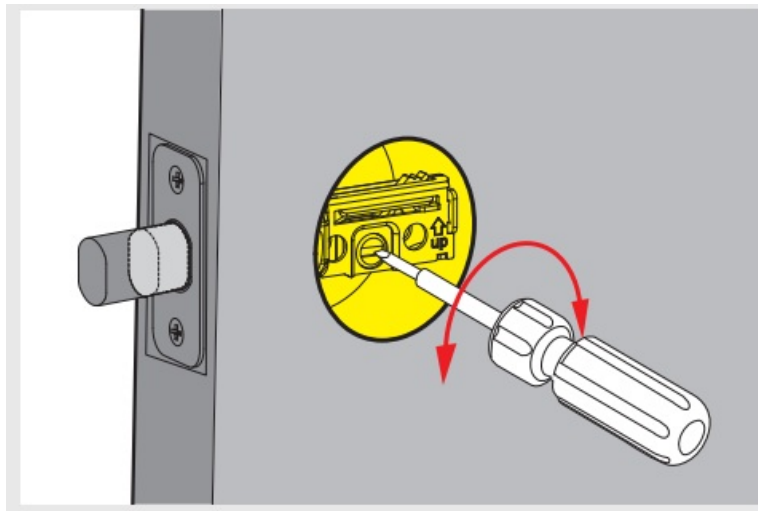
- **YES**, No adjustment is required.
- Proceed to the next step.
- **NO** Slotted hole is NOT centered.
- Rotate and pull the latch as shown to extend the latch.



• **B** Install the latch

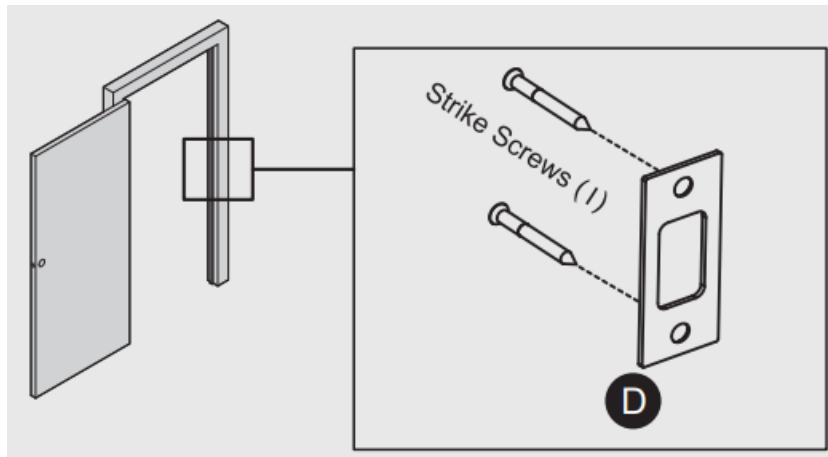


• **C** Use a screwdriver to test if the deadbolt works smoothly.



• **D** Install strike on the door frame.

- **IMPORTANT:** Make sure the hole in the door frame is drilled a minimum of 1" (25mm) deep.

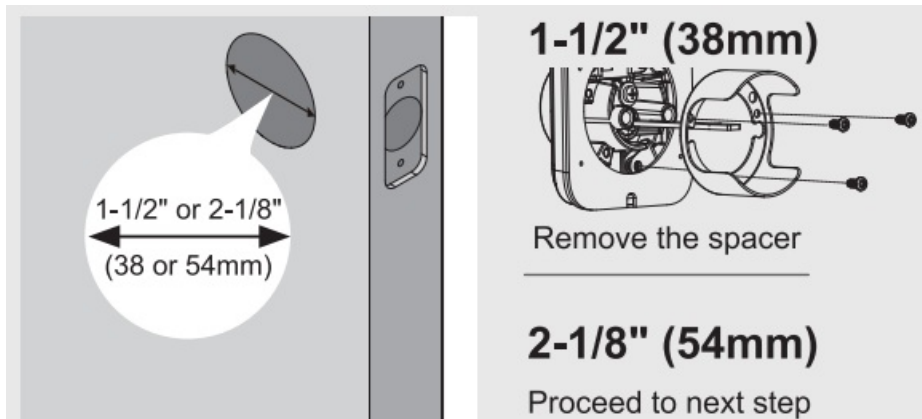


STEP 3 Install exterior assembly

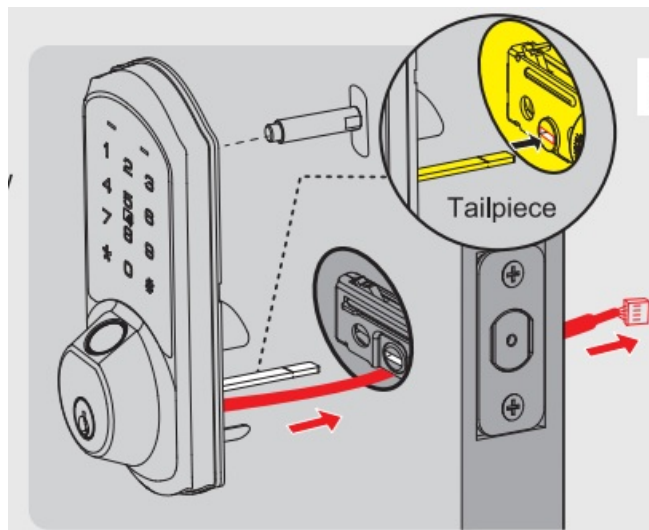
IMPORTANT: Before installation, make sure the latch is fully retracted (in the unlocked position)



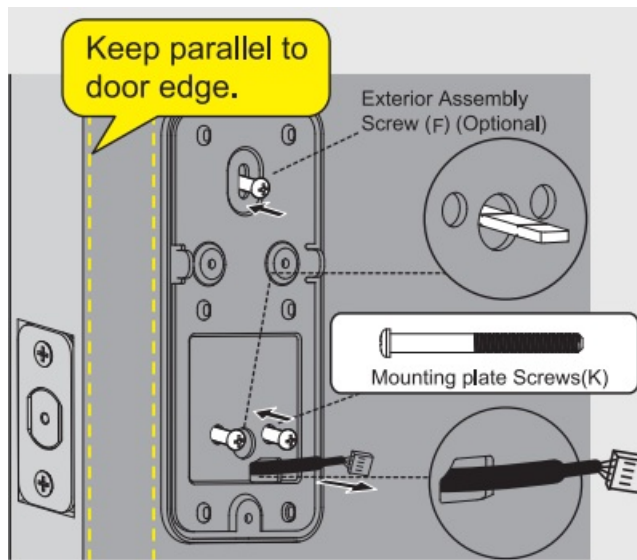
- **A** Measure the diameter of the hole in the door.



- **B** With the latch fully retracted (in the unlocked position), route the cable below the latch, and insert the tailpiece through the slot in the latch.

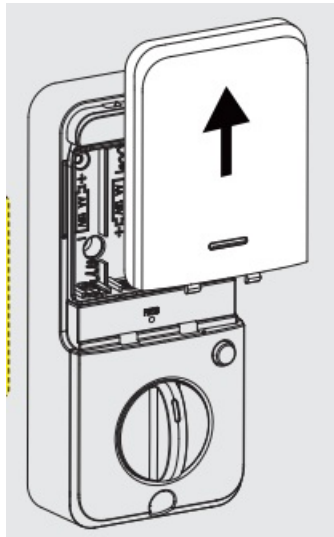


- **C** Secure the mounting plate with the supplied screws. Do not overtighten screws.

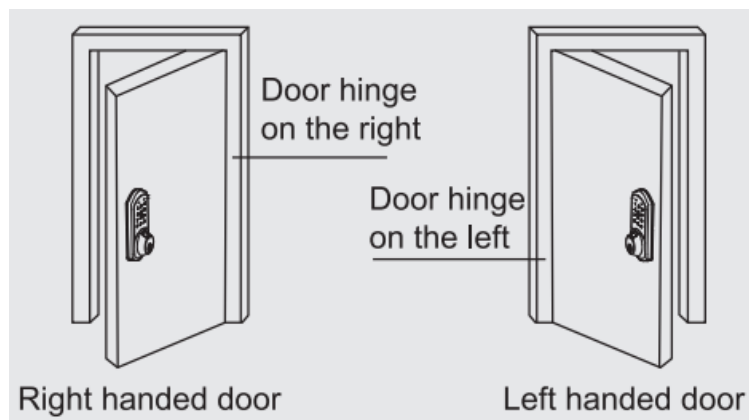


STEP 4 Install interior assembly

- **A** Push the battery cover out in the direction as illustrated.
 - **IMPORTANT:** Do not load batteries until the lock is completely installed.

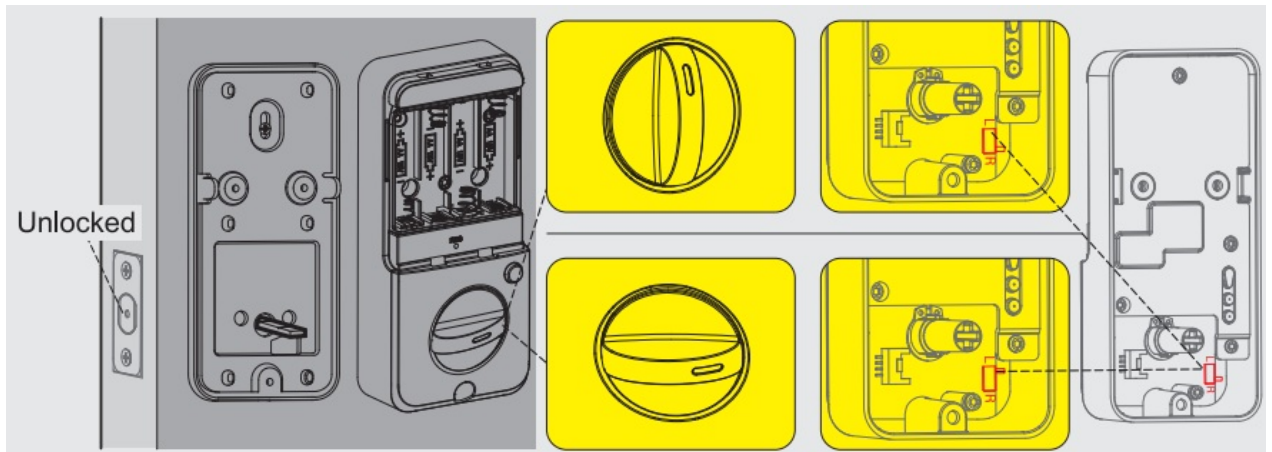


- **B** Determine whether the door is right-handed or left-handed.
 - **Notes:** If the direction of the slide switch is set incorrectly, it can be reset in the DDLock App.

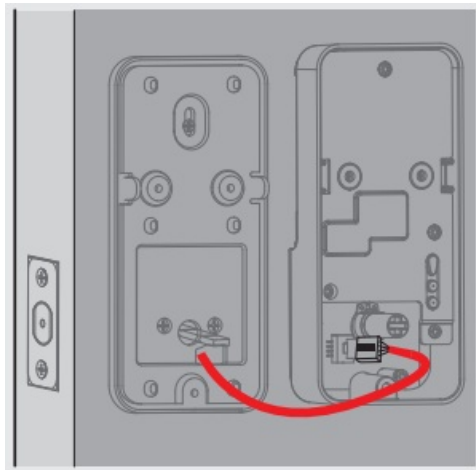


- **Right-handed door**
 - Move the slide switch to “R”
 - Turn the thumb to the Vertical position.
- **Left-handed door**
 - Move the slide switch to “L”

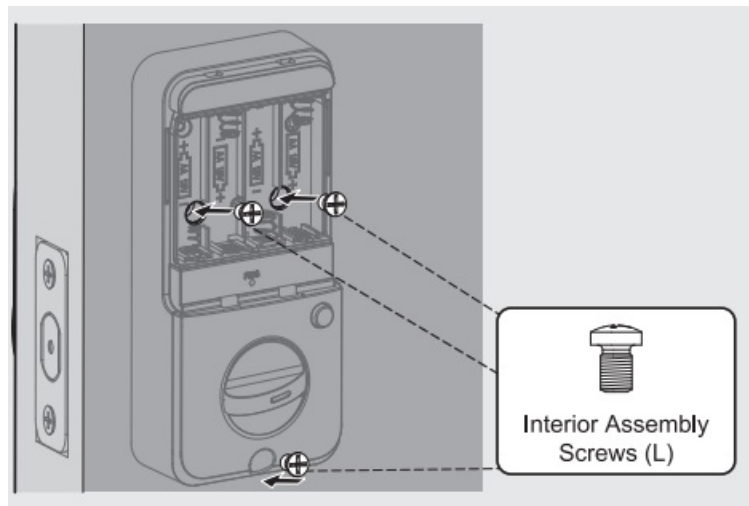
- Turn the thumb to the Horizontal position.



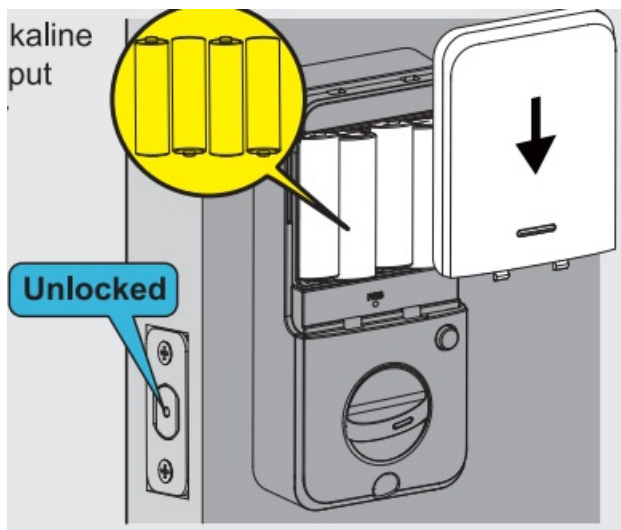
- **C** Insert the cable connector to the socket. Push the connector in firmly until it is completely attached.



- **D** Attach Interior Assembly to Mounting Plate and tighten 3 Screws.



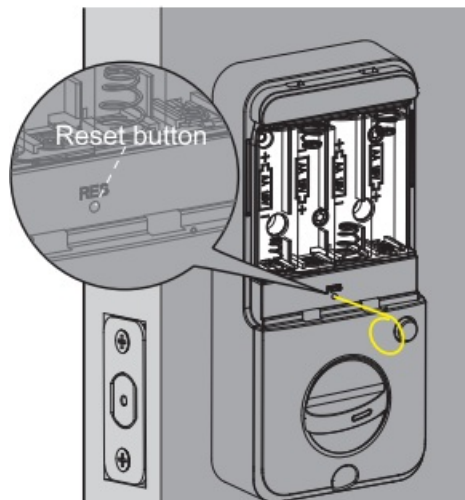
- **E** Insert 4 AA Alkaline batteries and put them on the battery cover.



Factory Default Settings

How to Reset?

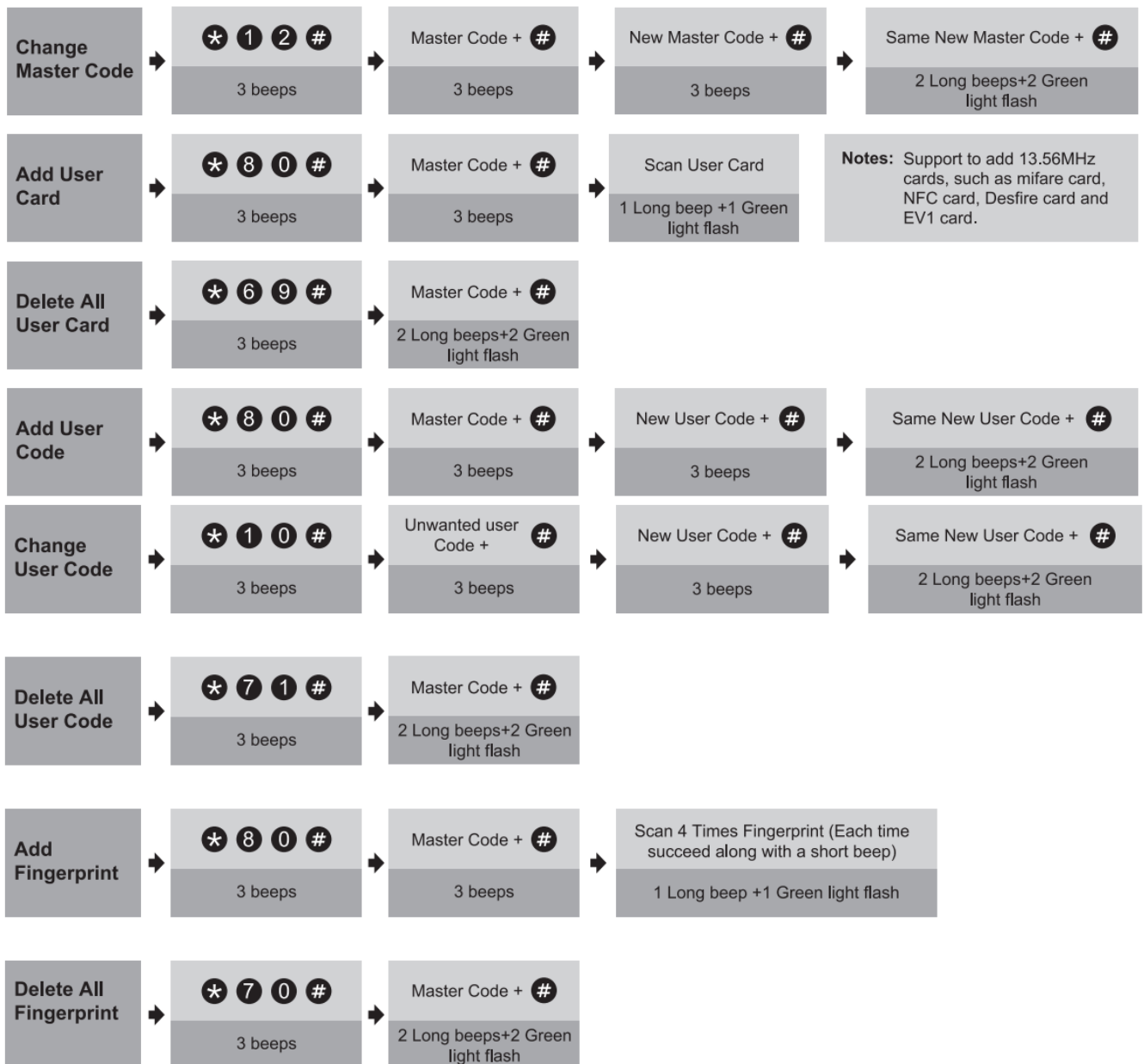
- Press and hold the Reset button on the interior assembly for 5 seconds by using the Reset tool, until you hear a short beep and Green light flashes once.
- If the lock is paired successfully, please locate
- **IMPORTANT:** For the lock, go to settings in the DDLock App, and turn on the Reset Button before resetting.



Settings	Factory Default
Master Code	123456
Auto Lock	Off
Passage Mode	Off
Reset Button	On
Lock Sound	On
Wrong Code Entry Limit	5times
Shutdown Time	2 minutes

Programming Guide

- **IMPORTANT:** The default master code is 123456. Before programming in the lock, it's required that you change the default master code to a new master code of your own.
- If you have changed the default master code by following the Programming Guide, you must reset the lock before pairing this lock to the DDlock App.



Troubleshooting

Why does the lock not accept any inputs after I enter a code or fingerprint incorrectly so many times?

- The lock will shut down for 2 minutes after 5 unsuccessful attempts at entering an invalid code or fingerprint.
- You can unlock the lock once in the App or wait 2 minutes to continue.

How do I lock manually from outside?

- Press and hold # to lock the lock from outside.

The batteries are completely dead before I replace new batteries?

- When the batteries are completely dead, the physical keys are available to unlock.

Why does the thumb not turn to lock/unlock?

- The door direction might be set wrong during the installation, please follow the Installation guide or video to re-install the lock.

Why does the latch not turn out completely after installation?

- Please review if the exterior assembly is aligned with the door parallelly.
- The exterior assembly should not be at a crooked angle.

FCC Statement

This device complies with part 15 of the FCC Rules. Operation is subject to the following two conditions:

1. This device may not cause harmful interference,
2. this device must accept any interference received, including interference that may cause undesired operation.

Caution: Any changes or modifications to this device not explicitly approved by the manufacturer could void your authority to operate this equipment.

This equipment has been tested and found to comply with the limits for a Class B digital device, under part 15 of the FCC Rules. These limits are designed to provide reasonable protection against harmful interference in a residential installation. This equipment generates, uses, and can radiate radio frequency energy and, if not installed and used by the instructions, may cause harmful interference to radio communications. However, there is no guarantee that interference will not occur in a particular installation. If this equipment does cause harmful interference to radio or television reception, which can be determined by turning the equipment off and on, the user is encouraged to try to correct the interference by one or more of the following measures:

- Reorient or relocate the receiving antenna.
- Increase the separation between the equipment and the receiver.
- Connect the equipment to an outlet on a circuit different from that to which the receiver is connected.
- Consult the dealer or an experienced radio/TV technician for help.

RF Exposure Information

This equipment complies with FCC radiation exposure limits set forth for an uncontrolled environment. This equipment should be installed and operated with a minimum distance of 20cm between the radiator and your body.

ISED Statement

This device contains license-exempt transmitters/receivers that comply with Innovation, Science and Economic Development Canada's license-exempt RSS(s). Operation is subject to the following two conditions:

1. This device may not cause interference.
2. This device must accept any interference, including interference that may cause undesired operation of the


device.

This equipment complies with Canada's radiation exposure limits set forth for an uncontrolled environment. This equipment should be installed and operated with a minimum distance of 20cm between the radiator & your body.

Information & Safety Warnings

- Protect your User Codes and Master Code.
- Restrict access to your lock's interior assembly and routinely check your settings to ensure they have not been altered without your knowledge.
- Do not use an electric screwdriver during installation.
- This manufacturer advises that no lock can provide complete security by itself.
- This lock may be defeated by forcible or technical means, or evaded by entry elsewhere on the property.
- No lock can substitute for caution, awareness of your environment, and common sense.
- Care should be taken to ensure a long-lasting finish. When cleaning is required use a soft, damp cloth. Using lacquer thinner, caustic soaps, abrasive cleaners, or polishes could damage the coating and result in tarnishing.
- The lock is water resistant. It can withstand water splashes; however, do not let water and liquids get into the lock.
- Avoid exposure to direct sunlight. Long-term exposure to direct sunlight may damage the lock.

Documents / Resources

	Veise VE07-L Fingerprint Smart Lock [pdf] Installation Guide VE07-L, VE07-L Fingerprint Smart Lock, Fingerprint Smart Lock, Smart Lock, Lock
---	---

References

- [User Manual](#)

[Manuals+](#), [Privacy Policy](#)

This website is an independent publication and is neither affiliated with nor endorsed by any of the trademark owners. The "Bluetooth®" word mark and logos are registered trademarks owned by Bluetooth SIG, Inc. The "Wi-Fi®" word mark and logos are registered trademarks owned by the Wi-Fi Alliance. Any use of these marks on this website does not imply any affiliation with or endorsement.