

Contents [[hide](#)]

- [1 Veise G1 Gateway Smart Power Plug Adapter](#)
- [2 Product schematic](#)
- [3 Download KK Home App](#)
- [4 Technical parameters](#)
- [5 Troubleshooting](#)
- [6 FCC Statement](#)
- [7 Documents / Resources](#)
 - [7.1 References](#)
- [8 Related Posts](#)

Veise

Veise G1 Gateway Smart Power Plug Adapter



Product schematic

operation	status
Power on the device	The device indicator changes from off to always be on.
Press and hold the RES button for 5 seconds	The device restores factory settings and enters the Internet connection state.
The device is connecting to the internet	The device indicator is flashing.
Click the button to switch the device status	The status indicator is off when the device is turned off; the status indicator is always on when the device is open.

Download KK Home App

Scan the QR code to download the KK Home App from the App Store or Google Play.



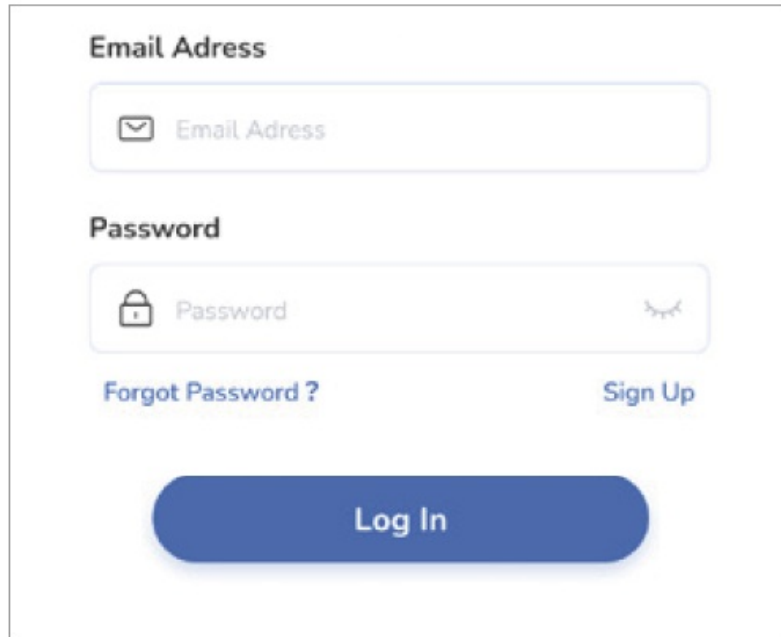
IMPORTANT:

- Please add the G1 gateway in the KK Home App, and then add the smart lock.

Step 1: Create an account for the App.

- If you are a regular user: This is a device, and you can integrate it into your KK Home App for easy control.

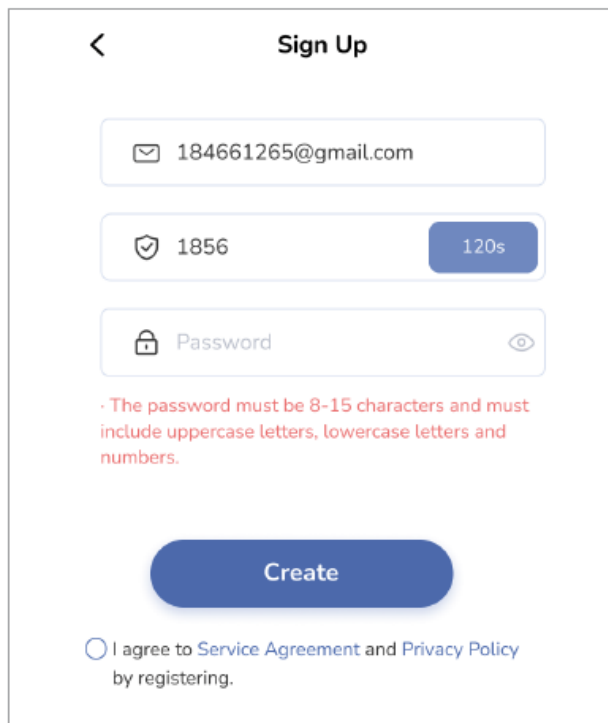
- If you are a new user: Please click the “Sign Up” button to create your account.



The image shows a login form with the following elements:

- Email Address:** A text input field with an envelope icon and placeholder text "Email Address".
- Password:** A text input field with a lock icon and placeholder text "Password". To the right of the field is an eye icon for toggling visibility.
- Forgot Password ?** A link located below the password field.
- Sign Up** A link located to the right of the "Forgot Password ?" link.
- Log In** A large blue button centered at the bottom of the form.

- Fill in your email ID
- Enter the verification code received in your email inbox
- Set up an account password
- Create an account successfully

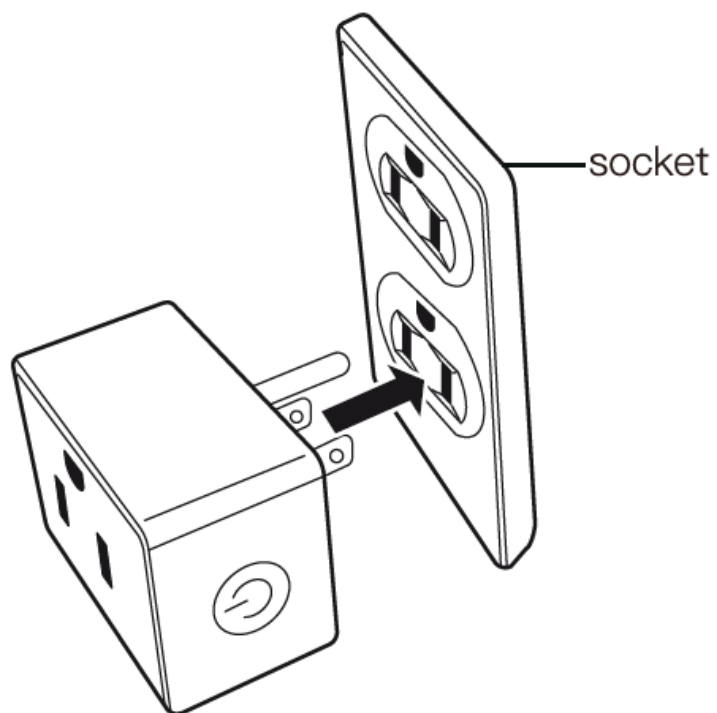


The image shows a "Sign Up" form with the following elements:

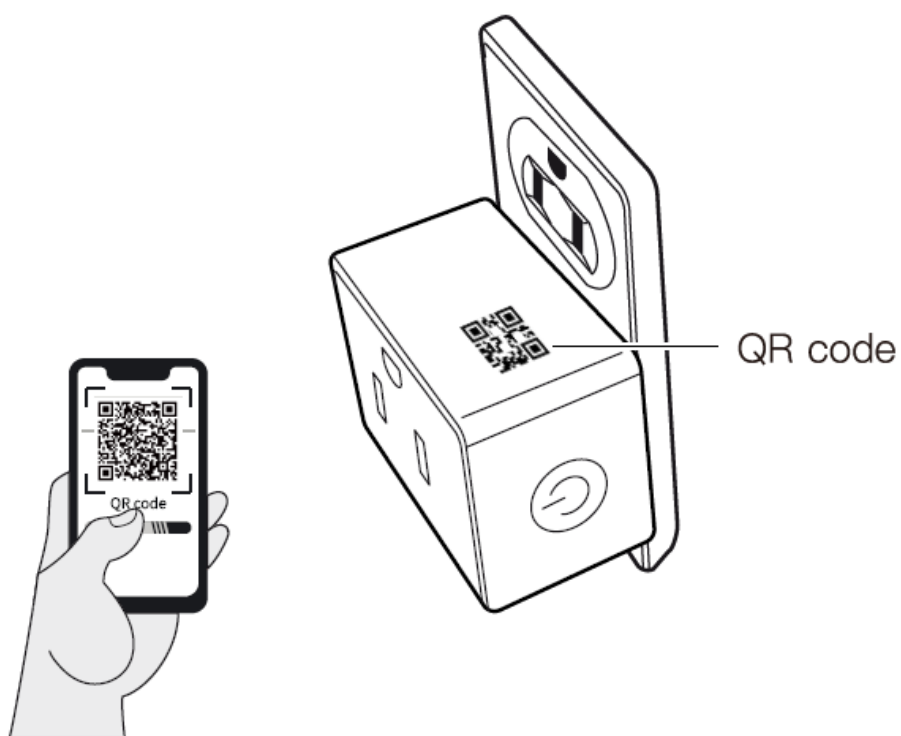
- Back Arrow:** A left-pointing arrow at the top left.
- Sign Up:** The title of the form at the top center.
- Email:** A text input field with an envelope icon and the value "184661265@gmail.com".
- Verification Code:** A text input field with a checkmark icon and the value "1856". To the right is a blue button labeled "120s".
- Password:** A text input field with a lock icon and placeholder text "Password". To the right is an eye icon for toggling visibility.
- Password Requirements:** A red text note below the password field: "The password must be 8-15 characters and must include uppercase letters, lowercase letters and numbers."
- Create:** A large blue button centered at the bottom of the form.
- Agreement:** A radio button followed by the text "I agree to [Service Agreement](#) and [Privacy Policy](#) by registering."

Step2: Add the G1

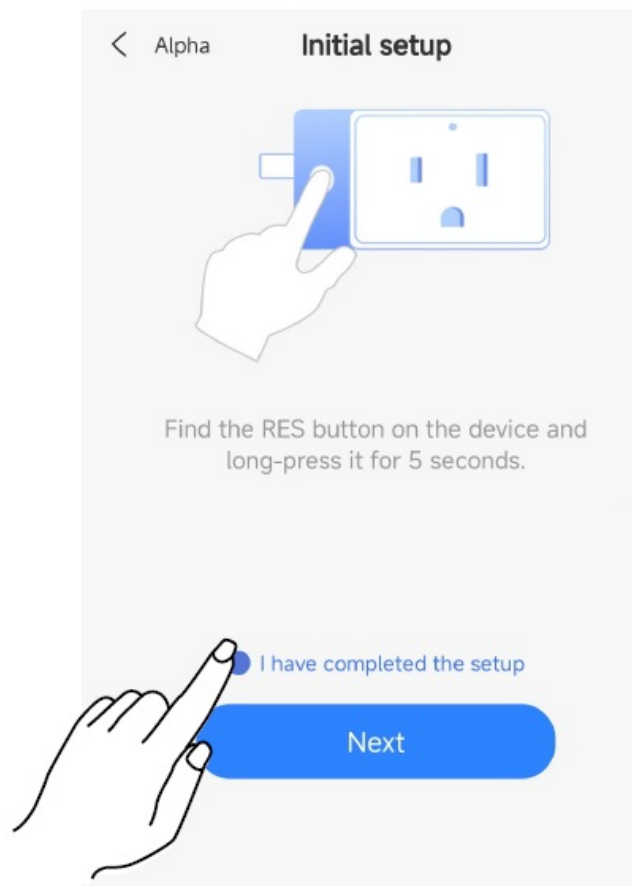
1. Power on the device.



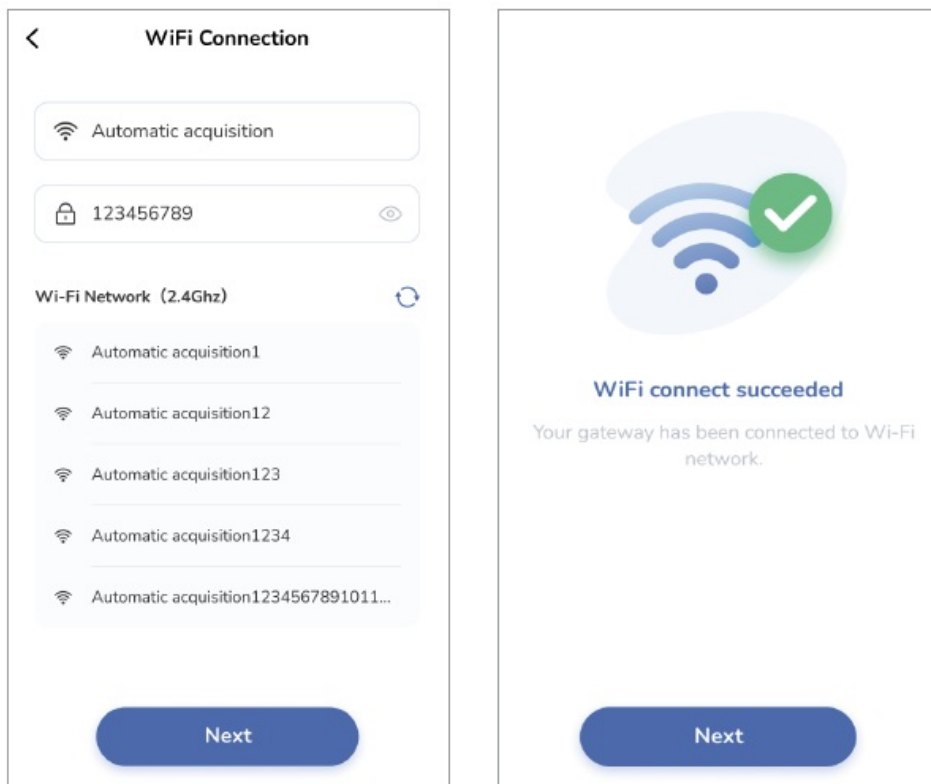
2. Open the App and scan the QR code on the device.



3. Find the RES button on the device, press and hold it for 5 seconds.



4. Set up Wi-Fi connection, it only works with 2.4G Wi-Fi network.



Step 3: Add the smart lock to the App.

Please refer to the App guide for the smart lock. Note: Before adding a smart lock in the App, please make sure the G 1 gateway has been added successfully.

Technical parameters

- Maximum current: 10A
- Rated voltage: 100- 240V
- Rated power: 2200W
- Input voltage: 100- 240V

Troubleshooting

What should I do if the gateway fails to be added?

1. Ensure that your router works properly. The router should be connected to the internet. Troubleshoot the issue of the router by changing the Wi-Fi network or using your phone's hotspot.
2. Turn off Advanced Wi-Fi settings for the router, like Band Steering (which also named "Smart Connect" or "Whole-Home Wi-Fi"), Wi-Fi Optimizing or Channel optimization and so on.

Note: The G1 gateway only supports 2.4G Wi-Fi, rather than 5G Wi-Fi.

3. View the Wi-Fi signal by using the Wi-Fi ANALYZER App.
 1. Strong: more than -50 dBm
 2. Good to Average: among -70 dBm to -50 dBm
 3. Poor: less than -70 dBm

Note: If RSSI is less than -70 dBm, the signal is too weak, the device will keep disconnecting and relocating the smart device or router to get a stronger Wi-Fi signal. Please make sure that the gateway is placed within the signal range of the router. The distance between the gateway and the smart lock is within 32 feet(10 meters).

4. Try changing the DNS settings of the router. Primary DNS: 8.8.8.8 Secondary DNS: 8.8.4.4

The gateway has been added successfully, but it can't be controlled remotely. What should I do?

1. Please review if you have added the G1 gateway before adding the smart lock.
2. Please make sure the distance between the gateway and the smart lock is within 32 feet (10 meters).

How many locks are supported by one gateway?

1. One gateway can work with 3 smart locks.

FCC Statement

This equipment has been tested and found to comply with the limits for a Class B digital device, under part 15 of the FCC Rules. These limits are designed to provide reasonable protection against harmful interference in a residential installation. This equipment generates, uses, and can radiate radio frequency energy and, if not installed and used in accordance with the instructions, may cause harmful interference to radio communications. However, there is no guarantee that interference will not occur in a particular installation. If this equipment does cause harmful interference to radio or television reception, which can be determined by turning the equipment off and on, the user is encouraged to try to correct the interference by one or more of the following measures:

- Reorient or relocate the receiving antenna.
- Increase the separation between the equipment and receiver.
- Connect the equipment to an outlet on a circuit different from that to which the receiver is connected.
- Consult the dealer or an experienced radio/TV technician for help.

Caution: Any changes or modifications to this device not explicitly approved by the manufacturer could void your authority to operate this equipment.

This device complies with part 15 of the FCC Rules. Operation is subject to the following two conditions:

1. This device may not cause harmful interference, and
2. this device must accept any interference received, including interference that may cause undesired operation.

RF Exposure Information

This equipment complies with FCC radiation exposure limits set forth for an uncontrolled environment. This equipment should be installed and operated with a minimum distance


20cm between the radiator and your body.

ISED Statement

This device contains licence-exempt transmitter(s)/receiver(s) that comply with Innovation, Science and Economic Development Canada's licence-exempt RSS(s). Operation is subject to the following two conditions: compliance with RSS 102 RF exposure, and users can obtain Canadian information on RF exposure and compliance.

This equipment complies with Canada's radiation exposure limits set forth for an uncontrolled environment. This equipment should be installed and operated with Minimum distance 20cm between the radiator & your body.

Documents / Resources

	Veise G1 Gateway Smart Power Plug Adapter [pdf] User Manual VE017G, G1 Gateway, G1 Gateway Smart Power Plug Adapter, G1, Gate way Smart Power Plug Adapter, Power Plug Adapter, Plug Adapter, Adapt er
---	---

References

- [User Manual](#)

Related Posts



[Taimeng MG-SMSIO Universal Multi Plug Power Travel Adapter Power Adapter User Manual](#)

Taimeng MG-SMSIO Universal Multi Plug Power Travel Adapter Power Adapter Product Information

Specifications WiFi: MG-SMSIOI Relay: 20A Current:...

[Aranet4 AC Power Adapter User Guide](#)

Aranet4 AC Power Adapter Aranet4 AC Power Adapter The Aranet4 AC Power Adapter

provide uninterrupted...



[GEBERIT Netzteil Power Adapter Instruction Manual](#)

Netzteil Power Adapter INSTALLATION MANUAL Netzteil Power Adapter WARNING Electric shock Incorrect installation can lead to death or...

[DIY USB Charger Power Adapter Kit User Manual](#)

DIY USB Charger Power Adapter Kit User Manual DIY Charger User Manual

Veise

Adapter, G1, G1 Gateway, G1 Gateway Smart Power Plug Adapter, Gateway Smart Power Plug Adapter, Plug Adapter, Power Plug Adapter, VE017G, Veise

Leave a comment

Your email address will not be published. Required fields are marked *

Comment *

Name

Email

Website

☐ Save my name, email, and website in this browser for the next time I comment.

Post Comment

Search:

Search

[Manuals+](#) | [Upload](#) | [Deep Search](#) | [Privacy Policy](#) | [@manuals.plus](#) | [YouTube](#)

This website is an independent publication and is neither affiliated with nor endorsed by any of the trademark owners. The "Bluetooth®" word mark and logos are registered trademarks owned by Bluetooth SIG, Inc. The "Wi-Fi®" word mark and logos are registered trademarks owned by the Wi-Fi Alliance. Any use of these marks on this website does not imply any affiliation with or endorsement.