

Veise B0CYHGPC2Q Handle Set



Veise B0CYHGPC2Q Handle Set Instruction Manual

[Home](#) » [Veise](#) » Veise B0CYHGPC2Q Handle Set Instruction Manual 

Contents

- [1 Veise B0CYHGPC2Q Handle Set](#)
- [2 Specifications](#)
- [3 Product Usage Instructions](#)
- [4 PRODUCT OVERVIEW](#)
- [5 Parts list](#)
- [6 Dimension](#)
- [7 Latch backset adjustment](#)
- [8 Install latch and strike](#)
- [9 Install Handleset](#)
- [10 Install Handle Lever](#)
- [11 Documents / Resources](#)
 - [11.1 References](#)

Veise

Veise B0CYHGPC2Q Handle Set



Specifications

- Handleset x1
- Latch x1
- Strike x1
- Dust Cover x1 (optional)
- Handle Lever x1
- Latch&Strike screws x4
- Spacer x1
- Handle Lever & Handleset screws x3
- Backset: 2-3/8 or 2-3/4 (60 or 70mm)
- Door thickness: 1-3/8 to 2 inches (35mm to 50mm)

Product Usage Instructions

Prepare the door and check dimensions:

If your door already has the holes shown in the picture below, proceed to the next step. If your door does not have holes, use the mounting template to drill a new hole.

Latch backset adjustment:

Backset is the distance from the door edge to the center of the hole in the door. The latch is provided with an adjustable design which can fit either 2-3/8" (60mm) or 2-3/4" (70mm) backset.

- **A.** If the backset of your door is 2-3/8 (60mm), no need to adjust the latch.
- **B.** If the backset of your door is 2-3/4 (70mm), please adjust the latch.

Install latch and strike:

Follow the provided instructions to install the latch and strike according to the backset of your door.

Install Handleset:

Ensure proper alignment and installation of the Handleset as per the provided guidelines. The latch should be aligned correctly.

Install Handle Lever:

Ensure the base of the spindle is rotated aligning with the hole and do not press the knob during installation. Test the Handleset after installation.

FAQ:

Q: Can I use an electric screwdriver during installation?

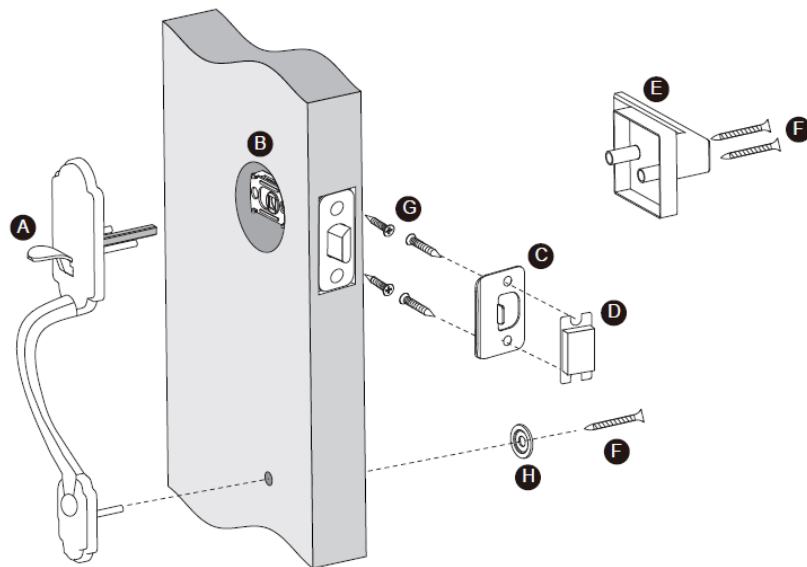
A: No, it is recommended not to use an electric screwdriver during installation to prevent damage to the product.

Q: What should I do if my door does not have the required holes?


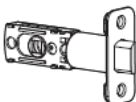


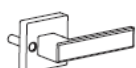
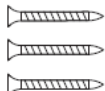


A: Use the mounting template provided to drill a new hole in your door before proceeding with the installation.

Thank you for purchasing our products. Please review this manual thoroughly before operating your device. All pictures in this manual are for illustration purpose only. Actual product may vary due to product upgrade.

PRODUCT OVERVIEW



Parts list

A Handleset x1 	B Latch x1 	C Strike x1 
D Dust Cover x1 (optional) 	E Handle Lever x1 	F Handle Lever & Handleset screws x3 
G Latch&Strike screws x4 	H Spacer x1 	

TOOL REQUIRED:

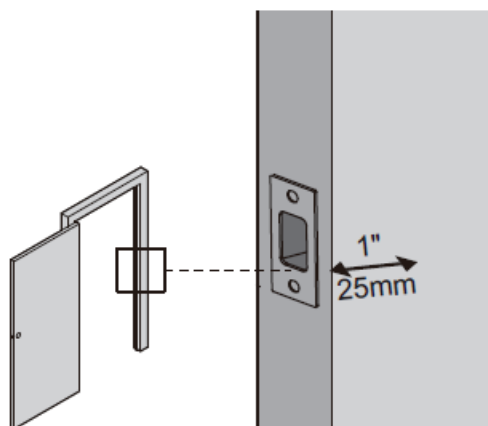
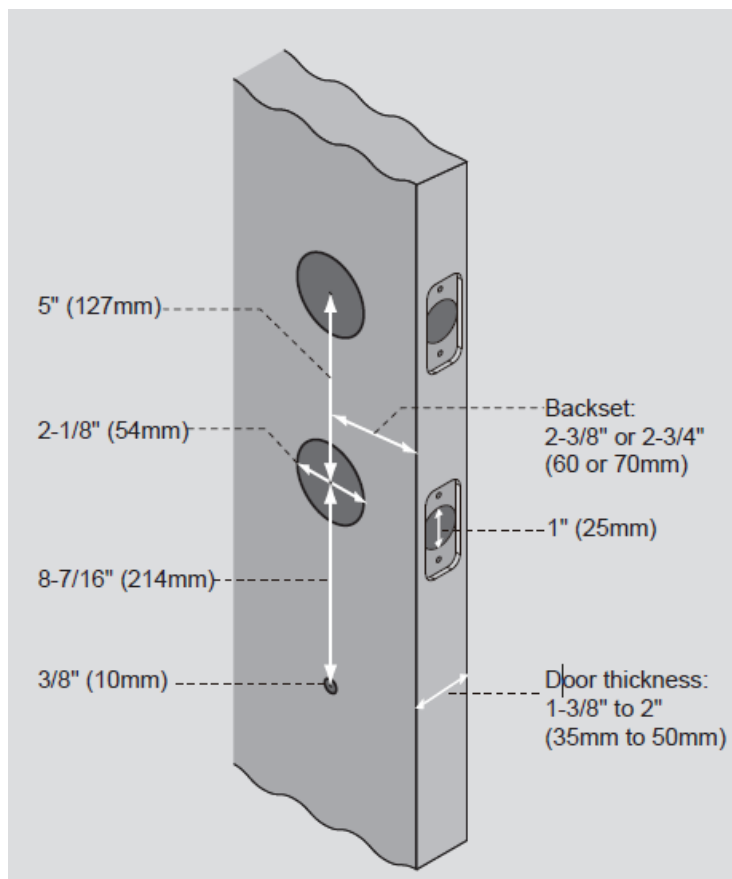


Do not use an electric screwdriver during installation.

Dimension

Prepare the door and check dimensions

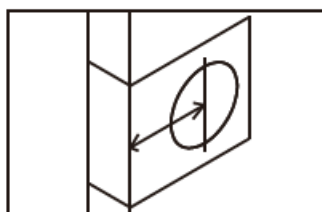
If your door already has the holes shown in the picture below, proceed to the next step, if your door does not have holes, use the mounting template to drill a new hole.



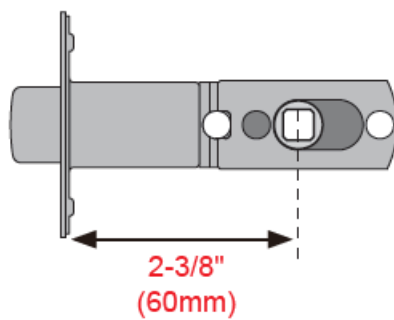
Latch backset adjustment

Backset is the distance from the door edge to the center of the hole in the door.

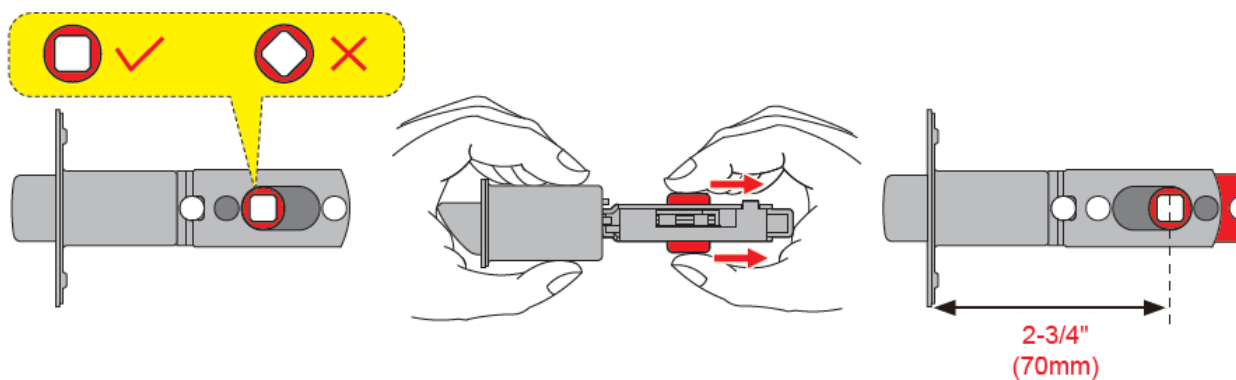
The latch is provided with adjustable design which can fit either 2-3/8" (60mm) or 2-3/4" (70mm) backset.



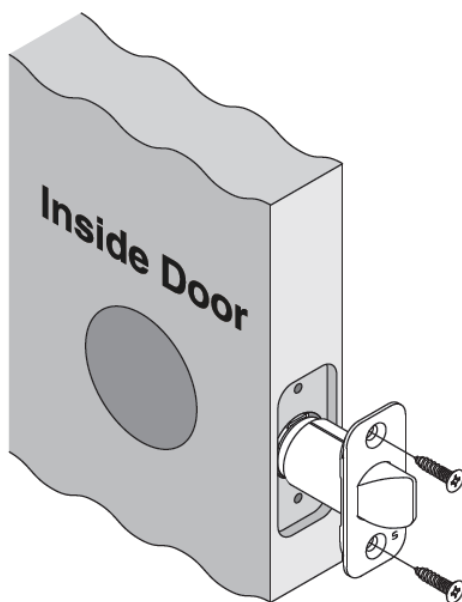
If the backset of your door is 2-3/8" (60mm), no need to adjust the latch.



If the backset of your door is 2-3/4" (70mm), please adjust the latch.

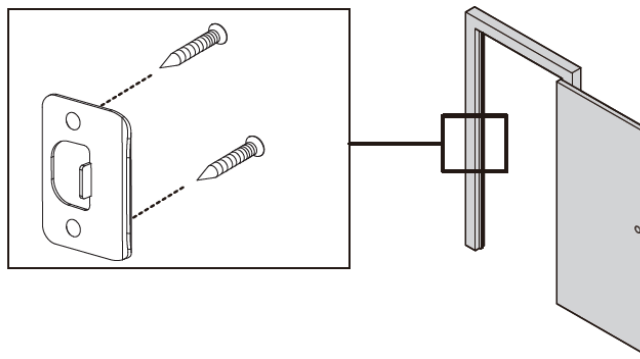


Install latch and strike



IMPORTANT

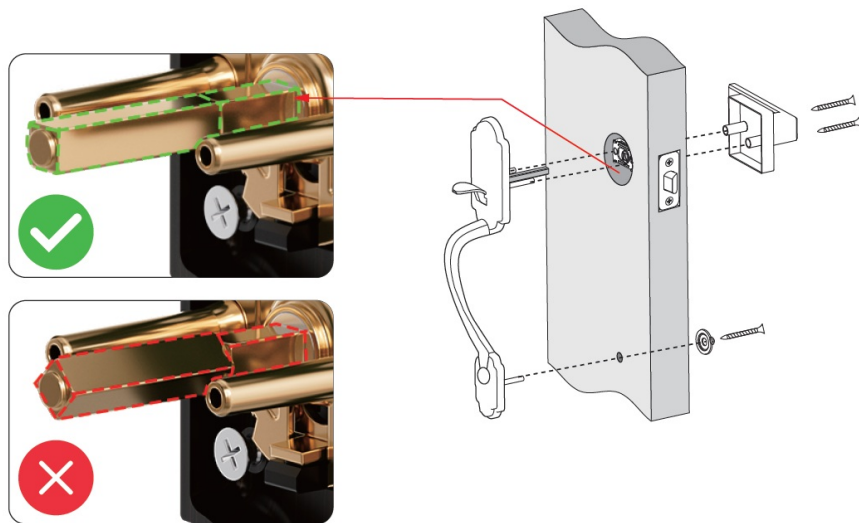
The latch should be aligned with the chiseled properly.



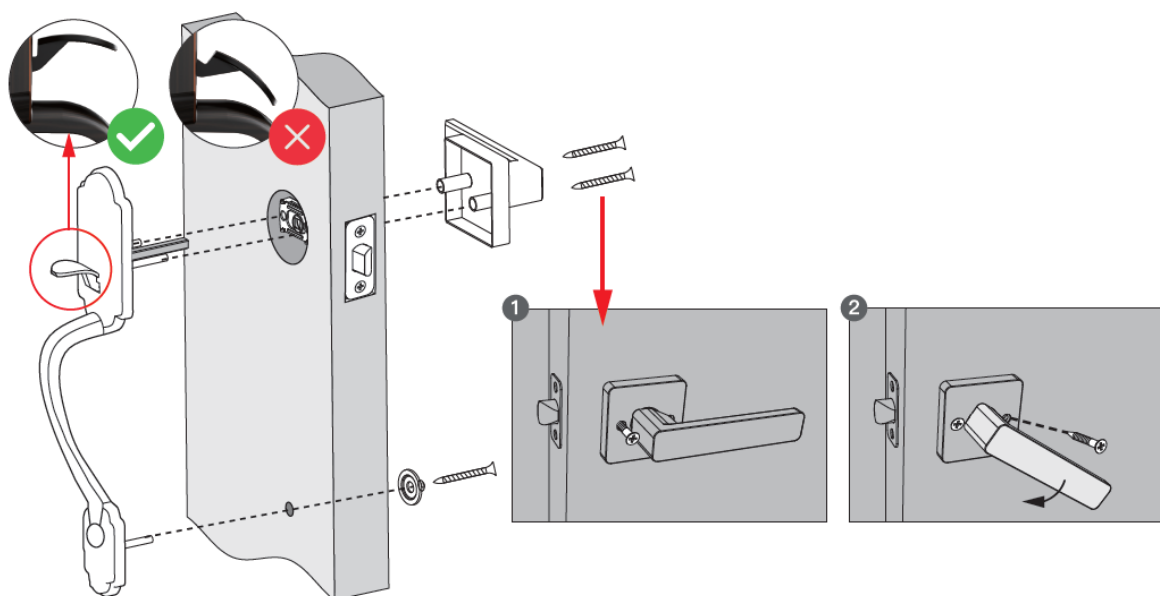
IMPORTANT

Make sure the hole in door frame is drilled a minimum of 1" (25mm) deep.

Install Handleset



Install Handle Lever



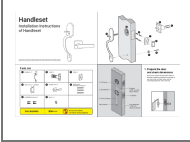
IMPORTANT

Don't press the knob during the installation of the handle.

Test the Handleset after installation.

Keep the door open, retract the latch by pressing knob from outside and pushing the lever from inside of the door to test if the Handleset works smoothly.

Documents / Resources

	<p>Veise B0CYHGPC2Q Handle Set [pdf] Instruction Manual B0CYHGPC2Q Handle Set, B0CYHGPC2Q, Handle Set, Set</p>
---	--

References

- [User Manual](#)

[Manuals+](#), [Privacy Policy](#)

This website is an independent publication and is neither affiliated with nor endorsed by any of the trademark owners. The "Bluetooth®" word mark and logos are registered trademarks owned by Bluetooth SIG, Inc. The "Wi-Fi®" word mark and logos are registered trademarks owned by the Wi-Fi Alliance. Any use of these marks on this website does not imply any affiliation with or endorsement.