



Veepeak OBDCheck BLE+ Bluetooth 4.0 OBD II Scanner Installation Guide

[Home](#) » [VEEPEAK](#) » Veepeak OBDCheck BLE+ Bluetooth 4.0 OBD II Scanner Installation Guide 



Instructions for OBDCheck BLE+
Quick Setup Guide with Car Scanner ELM OBD2

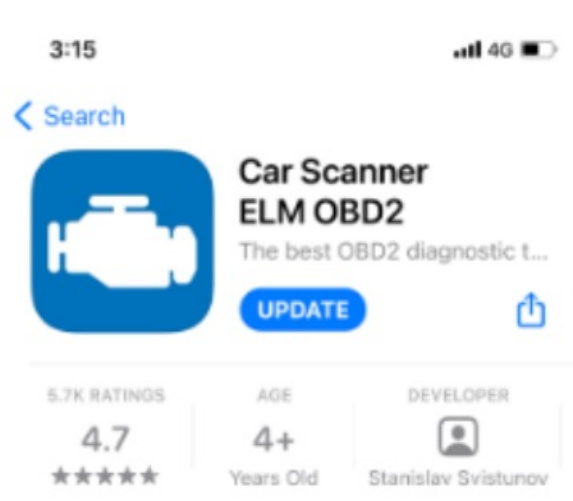


Contents

- [1 OBDCheck BLE+ Bluetooth 4.0 OBD II Scanner](#)
- [2 For Android Phone/Tablet](#)
- [3 FAQs](#)
- [4 Troubleshooting Guide](#)
- [5 Documents / Resources](#)

OBDCheck BLE+ Bluetooth 4.0 OBD II Scanner

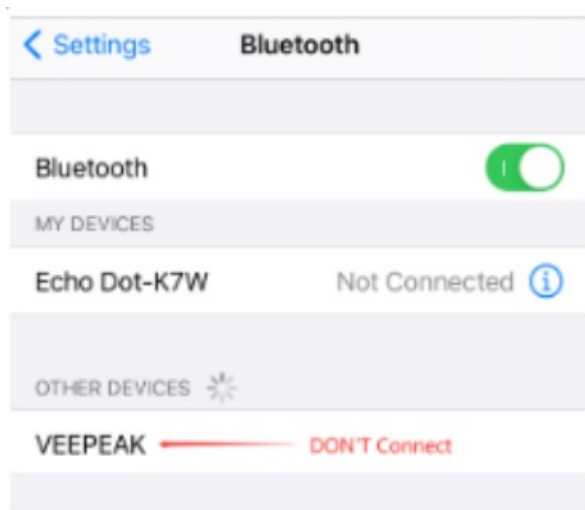
For iOS Devices (iPhone/iPad)



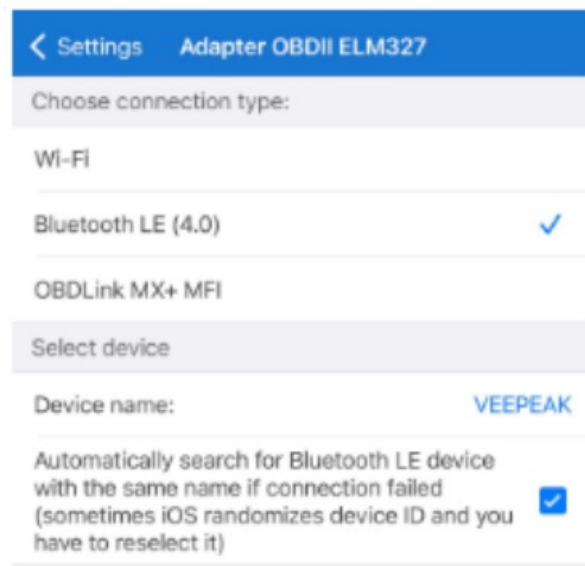
Step 1: Install APP Install an app from App Store like Car Scanner ELM OBD2 (free).



Step 2: Install Device Plug in the device. Turn on car rogation.

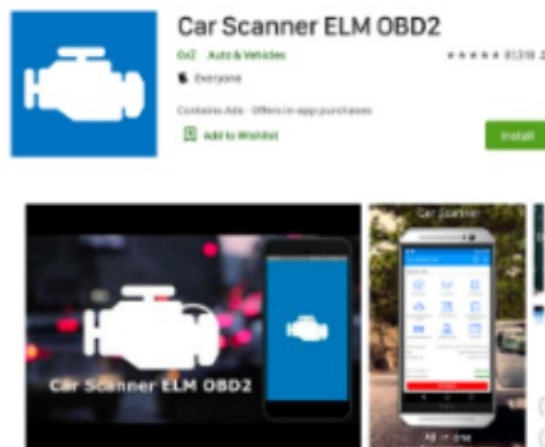


Step 3: DON'T Connect Here You should see VEEPEAK in Bluetooth menu of iPhone's Settings. DO NOT connect "VEEPEAK" here! Bluetooth LE does not require regular Bluetooth pairing. No need to do anything here.



Step 4: Run APP Start the app, make connection settings (see user manual) and connect. The app will make the Bluetooth connection.

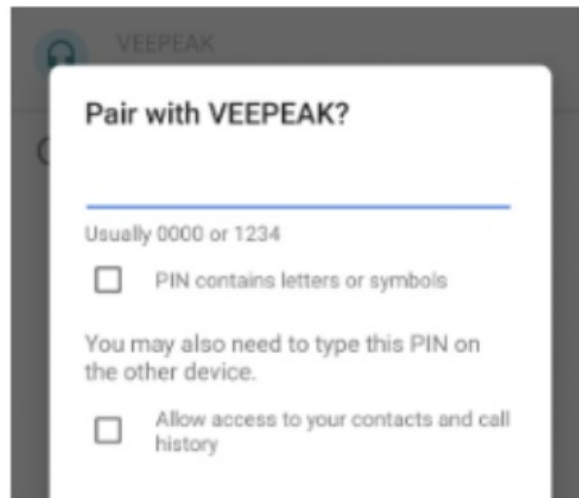
For Android Phone/Tablet



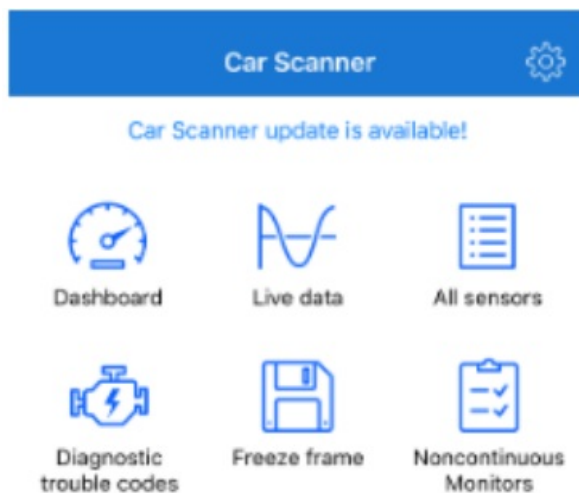
Step 1: Install APP Install an app from Play Store like Car Scanner ELM OBD2 (free).



Step 2: Install Device Plug in the device. Turn on car ignition.



Step 3: Pair with VEEPEAK Pair your phone with VEEPEAK using PIN 1234 in phone Bluetooth menu. Having problems pairing? Turn off Bluetooth and turn it back on to try again. VEEPEAK becomes previously connected device? No worries, it's still connector



Step 4: Run APP Start the app, make connection settings (see user manual) and conned.

FAQs

1. Is there an App included with the device?

No, but there are many great third-party OBD2 apps available to download (some may require purchase) from Google Play Store and Apple App Store. For generic OBD2 functions, we recommend Torque Lite (or paid

Pro, Android only), Car Scanner ELM OBD2, OBD Fusion (paid), Inforcar, etc. They cost from free to about \$10. Some special Apps require subscription or are more expensive.

2. Does it work with iOS iPhone or iPad?

Yes, the OBDCheck BLE+ works with Apple iOS devices via Bluetooth LE. You should not pair or connect in iOS Bluetooth Settings; instead, please directly connect in the App. Note: it does not use WiFi.

3. Is it compatible with Android head units?

It works with Android phones and tablets, but may have compatibility issue with some Android head units due to their lack of support for some Bluetooth profiles and we do not have a compatibility list due to the complexity of the market. For some Android head units, you may try changing the default pairing PIN from 0000 to 1234 in the head unit Bluetooth setting. If this still does not help, please contact the head unit manufacturer for assistance.

4. Can I leave the device plugged in all the time?

You can leave the adapter plugged in for a few days if your car battery is not too old, or the car is driven frequently. If you leave your car sitting for more than 1 week, we strongly recommend that you remove the device.

5. Does it work with EVs?

Most EVs (including PHEVs) do not use standard OBD II protocols, so you may need a capable App to connect, for example Car Scanner ELM OBD2 (select the corresponding connection profile), ABRP, Leafy, EV Watchdog, MyGreenVolt, Cane, etc.

6. Can it read or reset my ABS, airbag, and other non-Check Engine lights?

Most OBD2 Apps only provide basic check engine light diagnostics. You will need a capable App that can do enhanced diagnostic on these modules on your specific vehicle, for example OBD Fusion, OBD JScan, AlfaOBD, Carista OBD, etc. Contact Veepeak or the app developer if you are not sure. Oil change or maintenance required lights cannot be read or reset since there is no error code for them.

7. Which sensor data can I get?

Readable parameters depend on what's installed on the OBDII system by the manufacturer. Please refer to OBD II PIDs on Wiki. Generally, newer vehicles will give more readings and faster refresh speed.

8. Does it read transmission temperature?

The transmission (fluid) temperature is a manufacturer specific PID so it's not read by most generic OBD2 Apps. Please contact Veepeak customer support for App recommendation (similar to FAQ 6) or search for the custom PID information on the web & add it in the App. This applies to other manufacturer specific PIDs.

9. Does it support coding of BMW G series?

Currently the OBDCheck BLE+ does not support all the coding options in BimmerCode for G series. We are working on it, and for the moment you may choose the ENET WIFI Adapter on Amazon or other adapters as recommended by BimmerCode.

Troubleshooting Guide

1. Could not pair my phone with “VEEPEAK”. (Android)

Please try the following:

- (1) Turn off Bluetooth and turn it back on. Try pairing a few more times. Sometimes it helps.
- (2) Restart your phone, turn off WIFI/cellular data and try again.
- (3) Clear Bluetooth cache/storage: Settings – Apps (show system) – Bluetooth – Storage & Cache, clear them and RESTART the phone (the route may be slightly different for different brands).

2. When I try to connect “VEEPEAK” with my iPhone, it tells me it is not supported .

On iOS devices, you will see this error when trying to pair with Bluetooth LE devices from the Bluetooth Settings.

You do not need to connect with VEEPEAK here. Please restart your iOS device so “VEEPEAK” shows up again on Bluetooth. Then start the App and directly connect in the App.

3. Device not power up (no blue light).

First check if the cigar fuse of your vehicle is in good condition. You can also try with another vehicle to verify.

4. Device powers up, but “VEEPEAK” is not showing up on my phone’s Bluetooth device list .

Make sure the device is not connected to other phones or tablets. Please turn off Bluetooth and turn it back, refresh the Bluetooth list and wait for a few more seconds.

5. “VEEPEAK” quickly disconnects or does not show as connected after pairing .

As long as it is paired via Bluetooth, you can just start the app to connect. It may show as saved, paired or previously connected on some Android phones, but it’s actually connected.

6. App not connecting to OBD II Device (ELM connection fails) .

Make sure the App is compatible, and you have made the correct App connection settings and granted the App permissions; Remove and re-install the app (especially when you have an OS update);

Try with a different App.

7. Cannot connect to vehicle (ECU connection fails).

Make sure your vehicle is OBD2 compliant (1996+MY in the US, 2001+ petrol/2004+ diesel in EU & UK, etc.; commercial vehicles not compatible);

Check if your vehicle is supported by the App and App connection instructions (for example BimmerCode);


Make sure ignition is ON or start the vehicle to try;

Make sure it fits well in the OBD2 port. Try to push it a little harder into the OBD2 port;

Then try it on another vehicle if possible.

If you could not find the answer or still have troubles getting it to work after troubleshooting, please reach out to Deepak customer support at support@veepeak.com for assistance or replacement.



	<p>Veepeak OBDCheck BLE+ Bluetooth 4.0 OBD II Scanner [pdf] Installation Guide</p> <p>OBDCheck BLE Bluetooth 4.0 OBD II Scanner, OBDCheck BLE, Bluetooth 4.0 OBD II Scanner, 4.0 OBD II Scanner, OBD II Scanner, II Scanner, Scanner</p>
---	--