



Veemi Mini Projector WiFi Projector User Guide

[Home](#) » [Veemi](#) » Veemi Mini Projector WiFi Projector User Guide 

Contents

- [1 Veemi Mini Projector WiFi Projector](#)
- [2 Warm Tips](#)
- [3 iOS Devices Connect](#)
- [4 Android Deceives Connect](#)
- [5 Documents / Resources](#)
 - [5.1 References](#)
- [6 Related Posts](#)

Veemi Mini Projector WiFi Projector



Warm Tips

1. The top roller is to adjust ' Focus'



What should I do if the projected image is blurry?

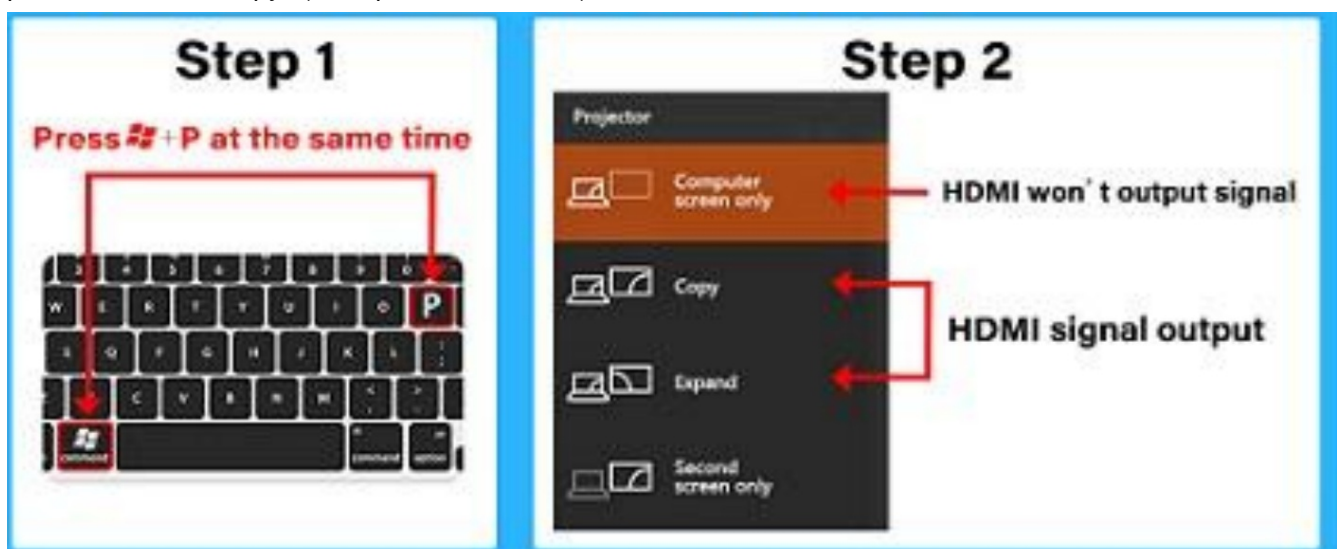
1. Please turn the roller on the top to adjust the focal length until the picture is clear. (with the roller picture

above)

2. Please place the projector at an appropriate projections distance, the best recommended distance is 0.8M-1.8M
2. What should I do when the HOMI interface is in poor contact, the video is stuck or there is image but no sound?
Please find the sound page in your laptop settings and refer to the right picture to operate



3. What should i do if there is no image output from the HDMI interface when the laptop is connected to the projector?
please select the 'copy'. (what picture reference)



iOS Devices Connect

1. Select the Mirroring Function



2. Press OK enter the WIFI setting



3. Connect the Projector to our WIFI



4. Connect Your Phone to the Same WiFi



5. Tap Screen Mirroring on Your Phone



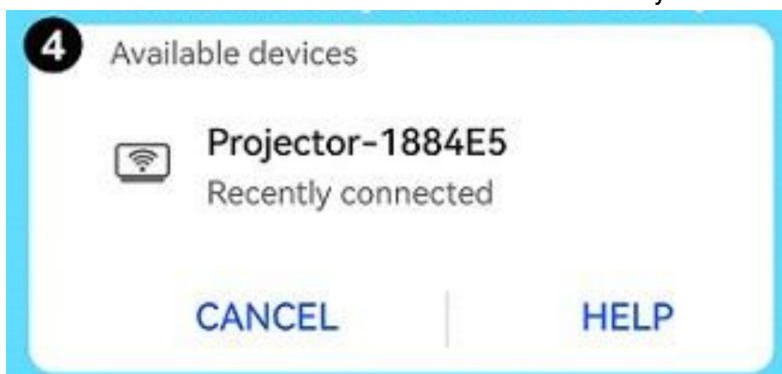
6. Choose the Projector- XXXXX-ITV



Android Deceives Connect



find Multi-Screen Miracast/Smart View function on your Android devices



Connect Your Phone to the Same WiFi



[Veemi Mini Projector WiFi Projector](#) [pdf] User Guide
Mini Projector WiFi Projector, Mini Projector, WiFi Projector, Projector

References

- [User Manual](#)

Manuals+.