



MDX Series Digital Refractometer



VEE GEE MDX Series Digital Refractometer User Guide

[Home](#) » [VEE GEE](#) » VEE GEE MDX Series Digital Refractometer User Guide 

Contents

- [1 VEE GEE MDX Series Digital Refractometer](#)
- [2 Specifications](#)
- [3 FAQs](#)
- [4 Included Parts](#)
- [5 Warranty](#)
- [6 VEE GEE MDX-Series](#)
- [7 Instrument Display](#)
- [8 Battery Compartment](#)
- [9 Instrument Use](#)
- [10 Taking Measurements](#)
- [11 Troubleshooting](#)
- [12 Care and Cleaning](#)
- [13 Documents / Resources](#)
 - [13.1 References](#)
- [14 Related Posts](#)



VEE GEE MDX Series Digital Refractometer



Specifications

- **Model:** MDX-602
- **Product:** DEF / Battery Refractometer

FAQs

- **Q: What should I do if my refractometer is not displaying correctly?**
 - **A:** If you encounter display issues, first check the battery level and replace if necessary. If the problem persists, contact the VEE GEE Service Center for assistance.
- **Q: How often should I calibrate the refractometer?**
 - **A:** It is recommended to calibrate the refractometer regularly, especially if you notice any inconsistencies in readings or after prolonged use.

Included Parts



1. MDX-Series Digital Refractometer
2. Removable Rubber Grip
3. Removable Prism Cover
4. Disposable Pipet
5. AAA, 1.5V Battery (1ea.)
6. Hardshell Storage Case
7. Screwdriver (not shown)

Introduction

- The VEE GEE MDX-Series portable digital refractometers are a modern design utilizing advanced optoelectronic components to provide years of fast, accurate liquid testing with high reproducibility.
- The MDX-Series models are designed to be simple to use with little training necessary; regardless though, it's highly recommended that users read this User Guide in its entirety before using the instrument for the first time. At any point, if you have any questions please contact our support team at:

Warranty

VEE GEE digital refractometers are warranted to be free from defects in material and workmanship for one year from the date of purchase. During this period the VEE GEE Service Center will, at their option and without charge, either repair or replace any part found to be defective in materials and workmanship. All warranty work shall be performed by the VEE GEE Service Center. Contact your dealer or the VEE GEE Service Center to troubleshoot the issue and to receive a Return Authorization, if necessary, for the return of your instrument for repair. The party returning the product must prepay all postage, shipping, transportation, packaging, duties & taxes, and delivery costs to the VEE GEE Service Center.

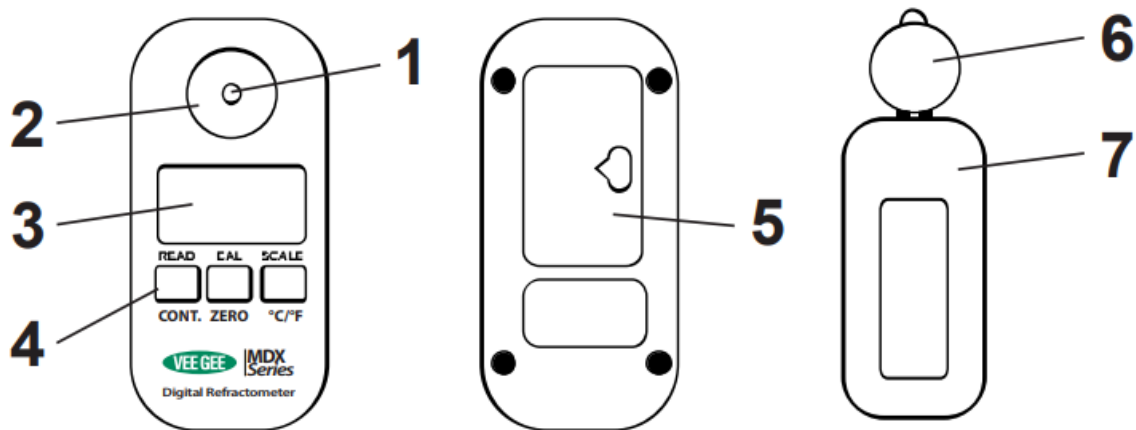
This warranty is subject to the following limitations and will not apply if:

1. There is a lack of proof of purchase date and place of purchase. The warranty is not assignable or transferable.
2. The damage is due to normal wear (including the prism), misuse, abuse, negligence, or any other cause not due to the manufacturing of the product.
3. The serial number is altered or obliterated; or unauthorized repair or replacement of parts by any party other than the VEE GEE Service Center.

This warranty expressly excludes transportation damage and readjustment. In no case shall VEE GEE Scientific LLC be liable to the Buyer or any person for any special, indirect, incidental, or consequential damage whether claims are based in contract or otherwise for or arising out of the product furnished hereunder. For goods manufactured by any third party, VEE GEE Scientific's liability under warranty is limited to the terms of the warranty by the supplier of the goods.

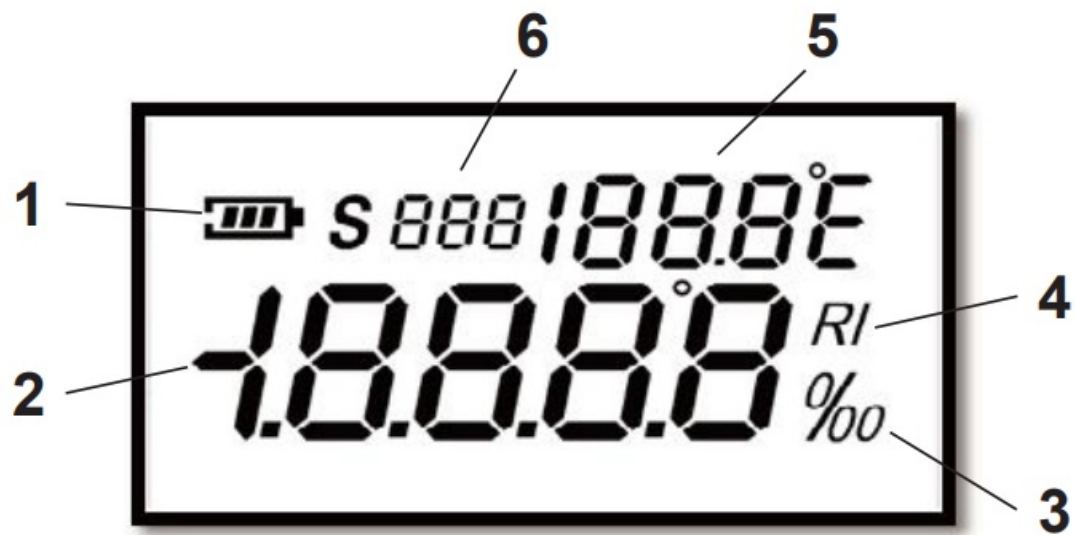
VEE GEE MDX-Series

Instrument Components



1. Prism Surface
2. Sample Well
3. LCD Display
4. Control Keys
5. Battery Compartment Cover
6. Removable Prism Cover
7. Removable Rubber Grip

Instrument Display



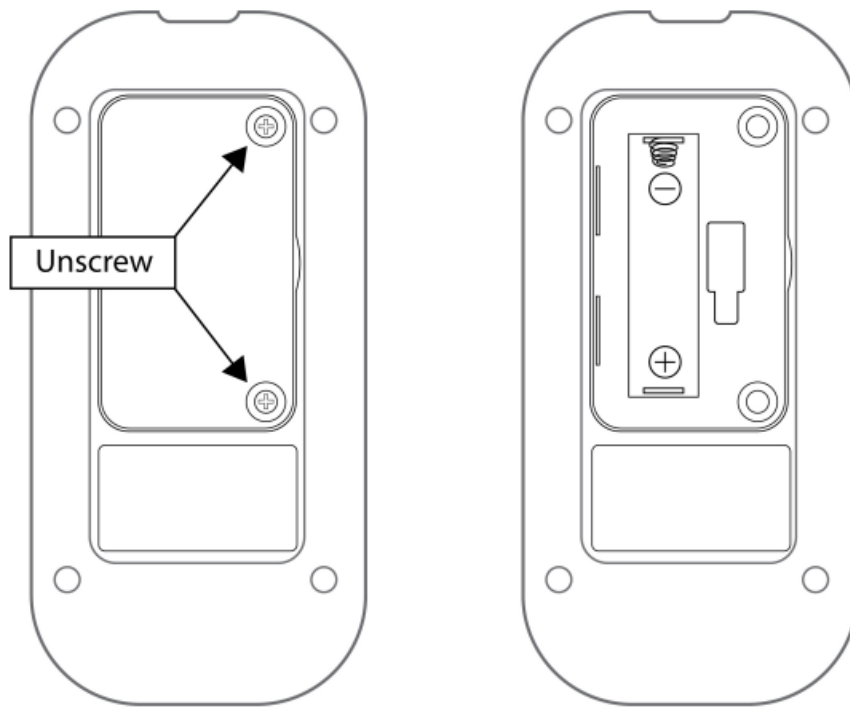
1. Battery Level Indicator
2. Reading Display
3. Percent or Per mille Scale Indicator
4. Refractive Index Scale Indicator
5. Temperature Display (°C or °F)
6. Active Scale Indicator / Continuous Read Timer

Battery Level	Display Indicator
100-80%	
80-50%	
50-20%	
<20%	

Expected battery life: 1000+ reads

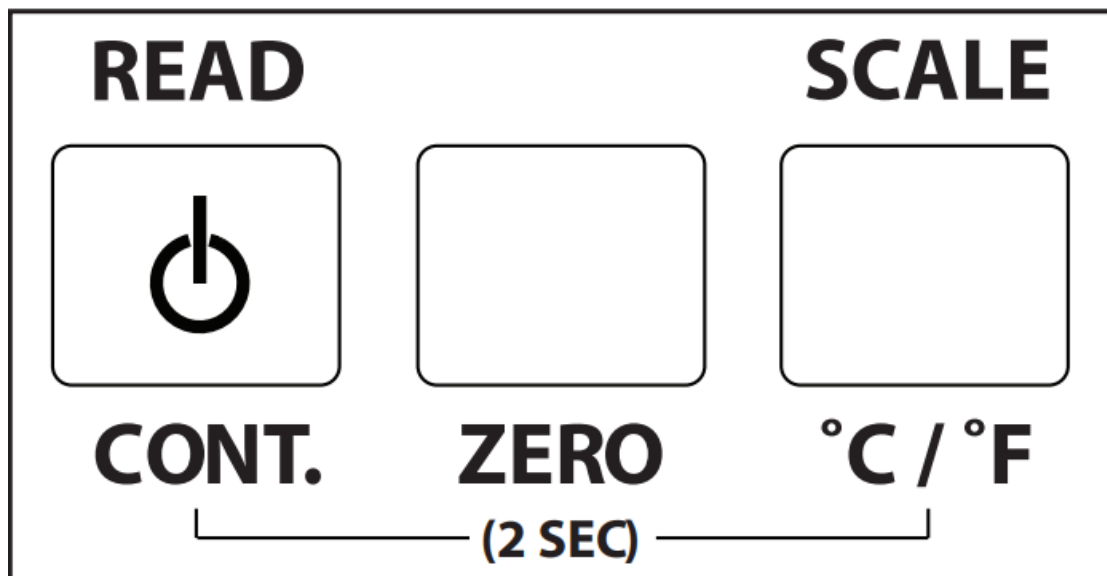
- **Expected battery life:** 1000+ reads

Battery Compartment



- Unscrew the two screws to open the battery compartment.
- Place AAA, 1.5V (1ea.) battery into the battery slot.
- Pay careful attention to ensure proper battery polarity when inserting.

Control Keys



READ Power On CONT.

- Press once and release to power on.
- Press once and release while powered on to take reading.
- Press and hold for 2 seconds while powered on to initiate continuous read loop function.

ZERO

- Press and hold for 2 seconds then press once again within 10 seconds to perform zero calibration procedure.

SCALE °C / °F

- Repeatedly press and release to toggle through all available scales.
- Press and hold for 2 seconds to toggle between °C and °F temperature display.

Instrument Use

Power On and Calibration

One press of the power key will power the instrument (figure 6). To maximize battery life the refractometer is designed to shut itself off after 1 minute of inactivity.



figure 6

- A zero calibration should be performed daily to achieve optimal accuracy.
- Clean and dry the sample well. Place a 4-5 drops of clean, distilled water in the samplewell.
- Close the prism cover to prevent stray light from affecting the calibration.
- Press and hold the ZERO key for two seconds until “CAL” is displayed, then release (figure 7).
- “CAL” will flash repeatedly for 10 seconds. Press ZERO once again while “CAL” flashes to perform the calibration. During this time it is crucial to not open the prism cover.
- If ZERO is not pressed again then the calibration will not be performed.
- The display will indicate “-END” when finished calibrating (figure 8).



figure 7

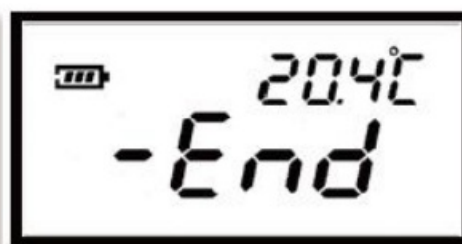


figure 8

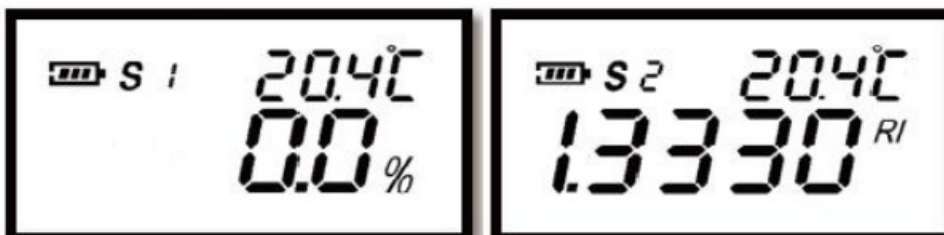


figure 9

- At this point, the display will change back to the default screen showing the active scale and instrument temperature (figure 9). If the instrument does not read distilled water with the values shown below clean the prism and recalibrate with fresh distilled water:

- Distilled Water
- 0.0% Brix $\pm 0.2\%$
- 1.3330RI $\pm 0.0003\text{RI}$

Scale Selection

- Repeatedly press and release the SCALE key to toggle through all available scales. The display will indicate which scale position is currently active- S01, S02, S03,... (figure 9).
- You can find descriptions and ranges for the available scales on the bottom of the instrument, the storage case label, and this user guide.

Taking Measurements

Single Readings:

- Ensure that the sample well is clean and dry. Place 4-5 drops of your liquid sample into the well and close the prism cover.
- Press the READ key once and the sample reading will display on the screen (figure 10). Additional readings can be made by pressing the READ key again if desired.
- Clean and dry the sample well when finished. The prism must be cleaned and dried before testing another sample.



figure 10



figure 11

Continuous Loop Readings:

- Pressing and holding the READ key for 2 seconds will start the continuous loop function.
- In this mode, the refractometer will make 15 sequential reads spaced about 1 second apart, then display an average of all readings as the last reading.
- During this function, the scale indicator will change to a counter and count down from 15 with each read (figure 11).

Troubleshooting

If unexpected results are experienced while testing your samples:

- Ensure that you are closing the prism cover when taking readings and during calibration.
- Recalibrate with clean, fresh distilled water and ensure that you are pressing the ZERO key once again while

CAL is flashing on display.

- Replace the battery with a new AAA 1.5V battery.
- Fully clean the sample well and prism.
- Ensure that you are working with highly homogenous samples and that it is free of large particulate matter; filter if necessary.
- Keep in mind that as a sample sits in the sample well, suspended solids may settle to the bottom and affect the readings.
- When testing samples that are of a different temperature than the instrument and/or environment it is best to wait a few seconds before pressing the READ key to allow the sample to acclimate properly.

Care and Cleaning

- It is important to clean the sample well completely when finished using and between samples to prevent solids from building up on the prism and causing erroneous readings.
- Use distilled water or diluted isopropanol with a soft cloth or tissue to clean the prism surface and sample well.
- Use a mild detergent to clean the instrument body; solvents are not recommended.
- When testing corrosive or acidic samples it is crucial to completely clean the sample well and prism between each reading and be careful to not get any of the sample on the plastic instrument housing.

Error Codes



figure 12



figure 13



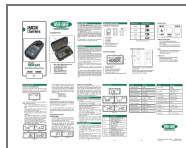
figure 14

Error Code	Description
A01	Calibration Temperature Error: Operating temperature must be 0-40°C. (<i>figure 12</i>)
A02	Calibration Sample Error: Use clean distilled water only for zero calibration.
A03	Hardware Failure: Contact our Technical Support department.
HHH / LLL (sample)	Sample High/Low-Value Error: Sample above or below the measurable range. (<i>figure 13</i>)
HHH / LLL (temperature)	Temperature High/Low-Value Error: Environment above or below the acceptable range. (<i>figure 14</i>)

Model	MDX-602
<i>Catalog Number</i>	48602
<i>Scale 1 Range</i>	0.0 - 51.0% DEF (Urea)
<i>Scale 1 Resolution</i>	0.1% DEF
<i>Scale 1 Accuracy</i>	±0.2% DEF
<i>Scale 2 Range</i>	1.3330 - 1.4200 nD
<i>Scale 2 Resolution</i>	0.0001 nD
<i>Scale 2 Accuracy</i>	±0.0003 nD
<i>Scale 3 Range</i>	1.000 - 1.500 s.g.
<i>Scale 3 Resolution</i>	0.001 s.g.
<i>Scale 3 Accuracy</i>	±0.005 s.g.
Model	MDX-602
<i>ATC Range</i>	0-40°C 32-104°F
<i>IP Rating</i>	IP67: detecting unit IP65: body
<i>Wavelength</i>	589.3nm LED
<i>Sample Cell</i>	Stainless Steel
<i>Calibration Solution</i>	Distilled Water
<i>Min. Sample Volume</i>	0.3mL
<i>Battery</i>	1 X AAA, 1.5V
<i>Dimensions</i>	121 x 58 x 25mm
<i>Weight</i>	90g
<i>Warranty</i>	1-Yr Parts & Labor

- Copyright © 2016 VEE GEE Scientific
- Printed in China
- All Rights Reserved VGMNL071921- MDX-602

Documents / Resources



[VEE GEE MDX Series Digital Refractometer](#) [pdf] User Guide
602, 1590, MDX Series Digital Refractometer, MDX Series, Digital Refractometer, Refractometer

References

- [User Manual](#)

[Manuals+](#), [Privacy Policy](#)

This website is an independent publication and is neither affiliated with nor endorsed by any of the trademark owners. The "Bluetooth®" word mark and logos are registered trademarks owned by Bluetooth SIG, Inc. The "Wi-Fi®" word mark and logos are registered trademarks owned by the Wi-Fi Alliance. Any use of these marks on this website does not imply any affiliation with or endorsement.