

VAVA 120-ALR Projector Screen Max User Manual

[Home](#) » [Vava](#) » VAVA 120-ALR Projector Screen Max User Manual 

Contents

- [1 VAVA 120-ALR Projector Screen Max](#)
- [2 IMPORTANT SAFETY INSTRUCTIONS](#)
- [3 Package Contents](#)
- [4 Specifications](#)
- [5 WARRANTY AND SERVICE](#)
- [6 Documents / Resources](#)
- [7 Related Posts](#)



VAVA 120-ALR Projector Screen Max



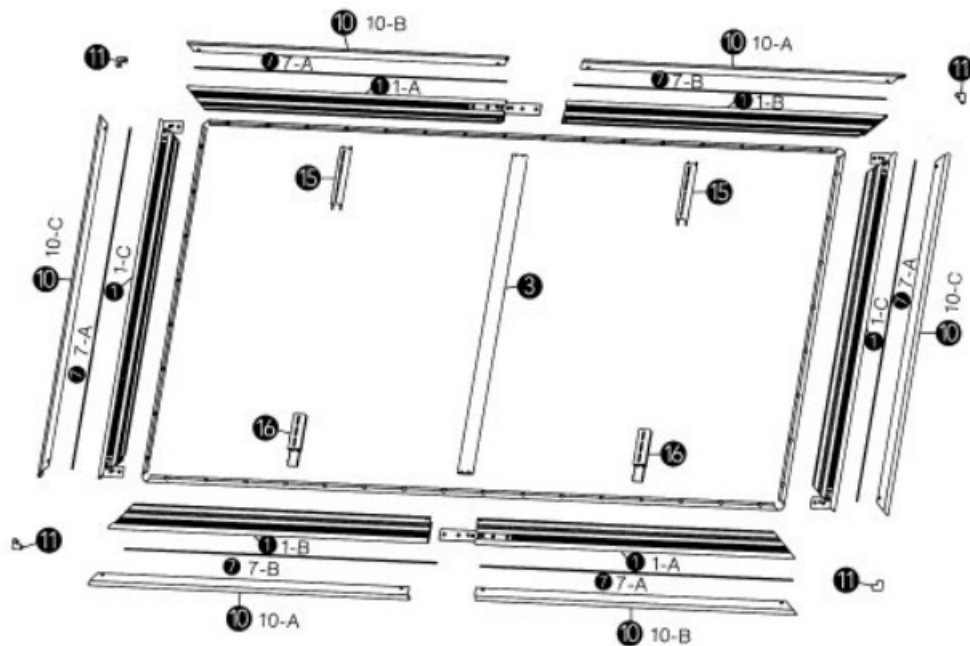
IMPORTANT SAFETY INSTRUCTIONS

READ AND FOLLOW ALL SAFETY INFORMATION AND INSTRUCTIONS. KEEP FOR FUTURE REFERENCE.
A CAUTION

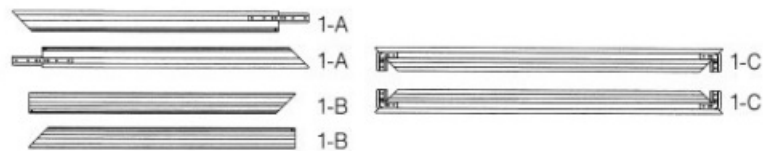
- For optimal projection, safe installation and long-lasting use of the screen, follow below instructions carefully:
- Always handle the screen on a clean, level surface covered with clean cloth, film, etc.
- Gently hold and put down the unit to avoid any damage to the screen surface.
- Do not touch the screen surface by hand. Use gloves to avoid fingerprints, hand sweat, or dust on the screen surface.
- Do not poke the screen surface with any sharp or hard objects to avoid Scratches or tears.
- It is recommended to clean the screen once every two weeks.
- When cleaning, wipe the screen with a soft cloth and lukewarm water. For general dust, use a Soft brush to clean the screen Surface (rough towels or cloth may damage the screen).
- Do not clean with abrasive detergent, solvent or other coarse chemicals to avoid permanent damage to the screen surface.
- You may notice a slight smell during first-time use, which will dissipate over time.
- If the smell is too strong, open a window to ventilate the room.
- Children should be supervised to ensure that they do not play with the screen.
- Please contact your local dealer for repair or maintenance. For any questions or concerns, please email us at support@vava.com or call us at (871) 969-8282.

READ AND SAVE THESE INSTRUCTIONS

Expanded Overview



Package Contents



① Inner Frames *4

① Inner Frames *2

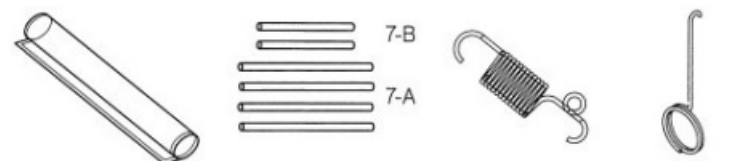


② Cross Screwdriver *2

③ Support Rod *1

④ M4*8 Screws *16

⑤ Gloves *2 (pairs)

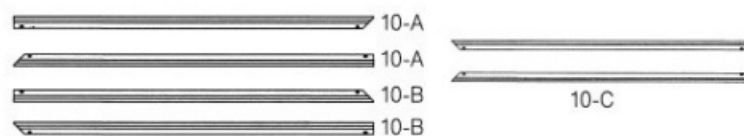


⑥ ALR Screen *1

⑦ Fiberglass Strips *6

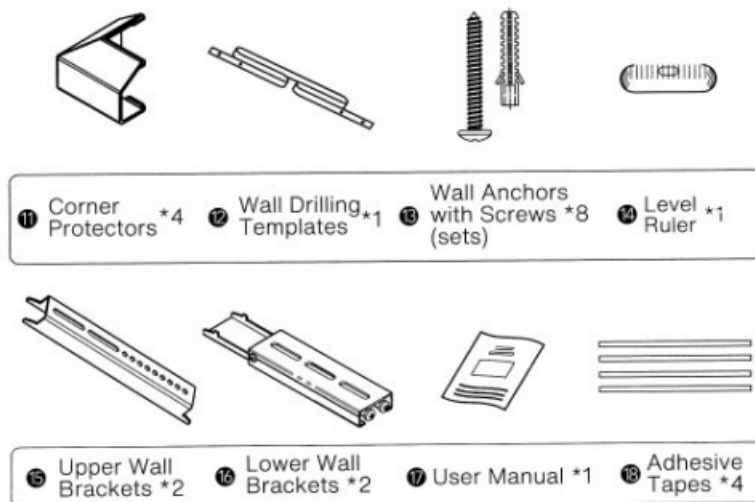
⑧ Draw Springs *N

⑨ Hooks *2



⑩ Exterior Frames *4

⑩ Exterior Frames *2

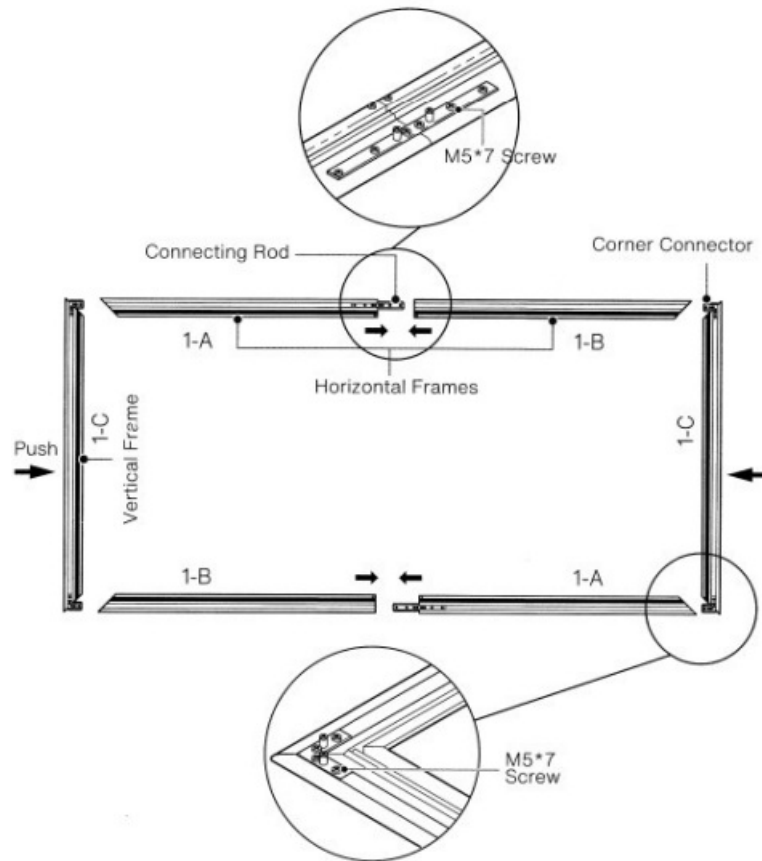


Specifications

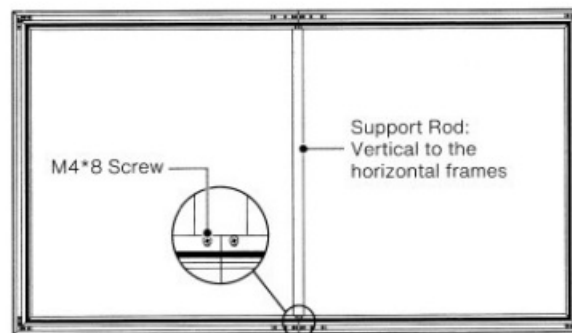
Model	VA-LT030
Gain	0.6
Viewing Angle	160°
Ambient Light Resistance	92%
Projection Size	2676*1514 mm/105.35*59.61 in
Projection Ratio	16:9
Screen Size	2656×1494 mm/104.57×58.82 in
Screen Weight	12 kg / 26.45 lbs

Assemble the Inner Frames

1. Connect the horizontal frames and fasten the M5*7 screws.
2. Insert the four corner connectors into the horizontal inner frames and fix the corners with M5*7 screws as shown below.



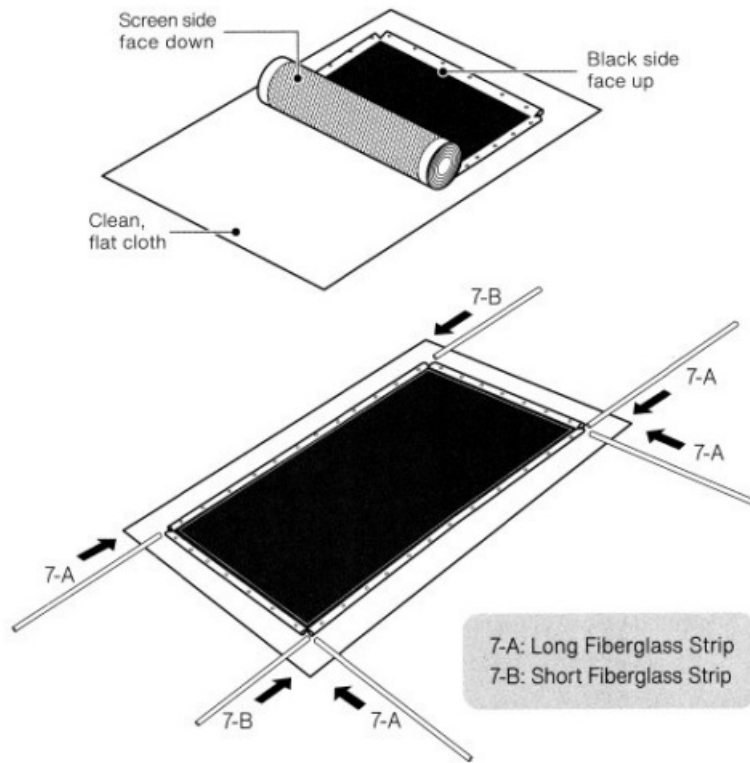
3. Install the support rod as shown below.



Assemble the Screen

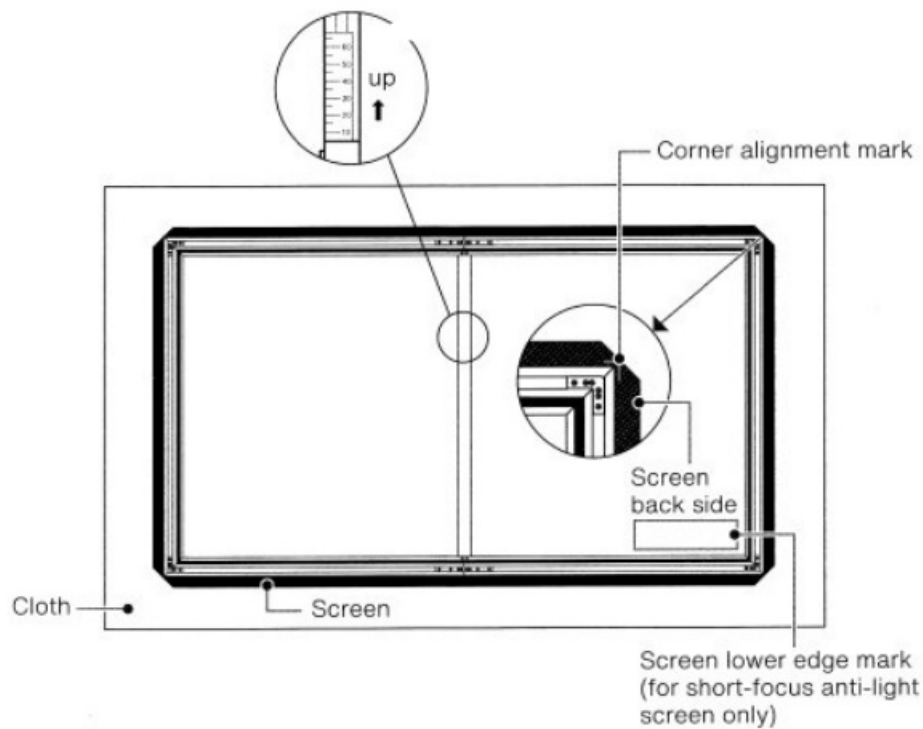
1. Put on gloves and place a clean cloth (or use the packaging material for the screen) on a flat, clean and level surface.
2. Unroll the screen, place it face down on the cloth, then insert the fiberglass strips into the screen sides.

Caution: Handle with care. Avoid any creases on the screen.

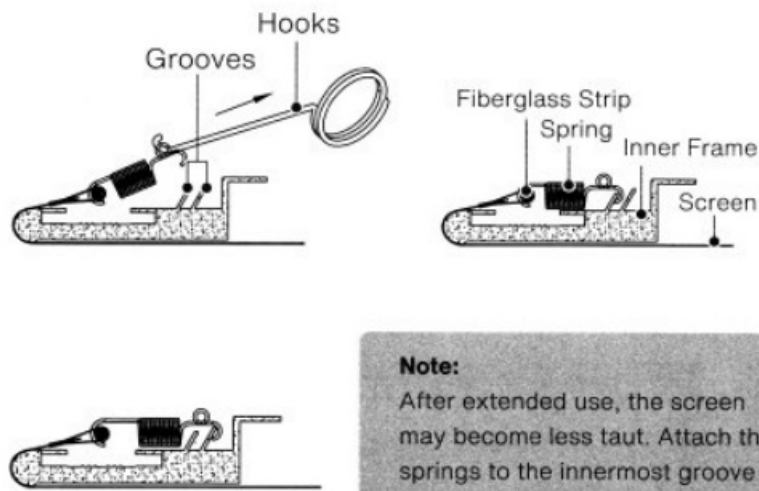
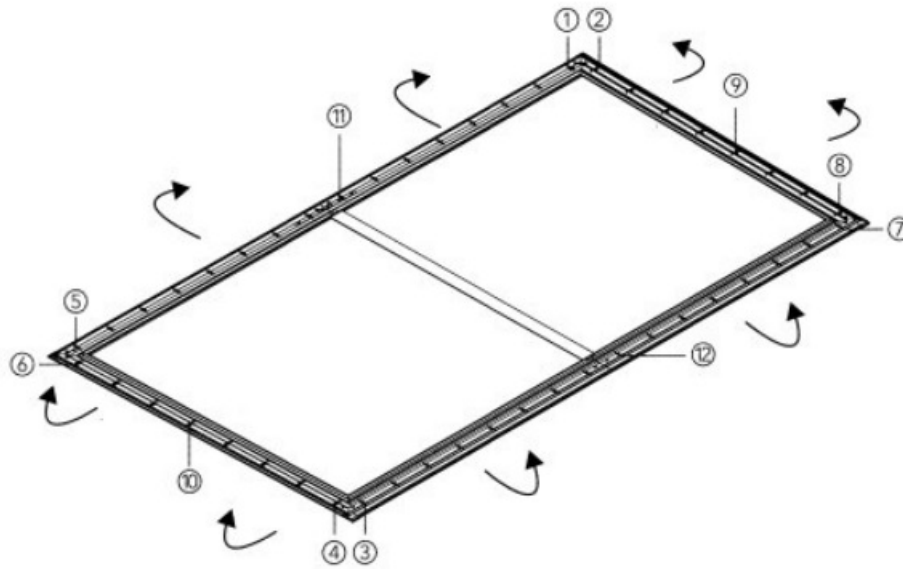


3. Put the assembled frames on the back side of the screen.

Note: short-focus anti-light screen is directional and needs to be well matched with the frames.



4. Fix the screen onto the frame with all the springs in order as indicated below (corners, short sides, then long sides).



Note:

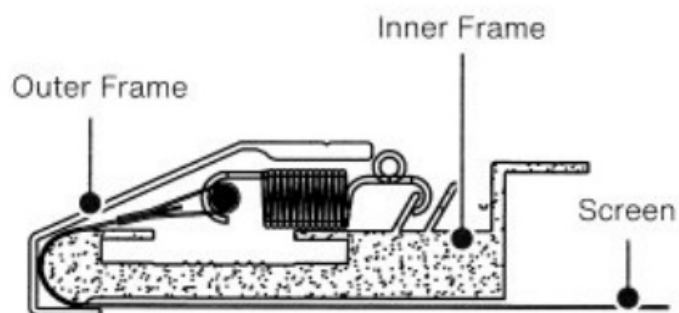
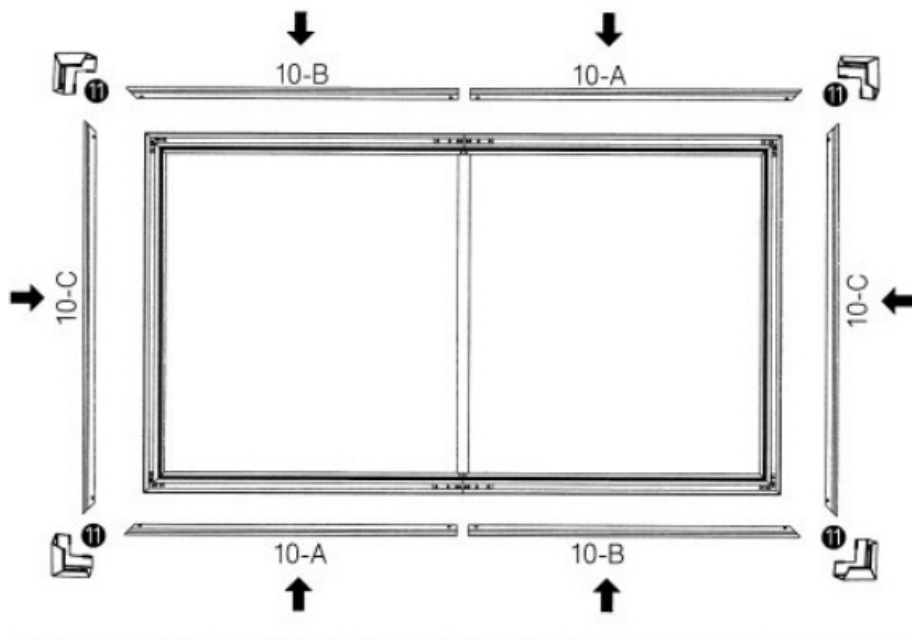
After extended use, the screen may become less taut. Attach the springs to the innermost groove to re-flatten it.

5. Hold the screen upright and ensure that it is taut and flat.
Adjust the springs until no creases observed.

Assemble the Outer Frames

1. Place the outer frames against the inner frames, align the four corners and fix with the included M4*8 screws.

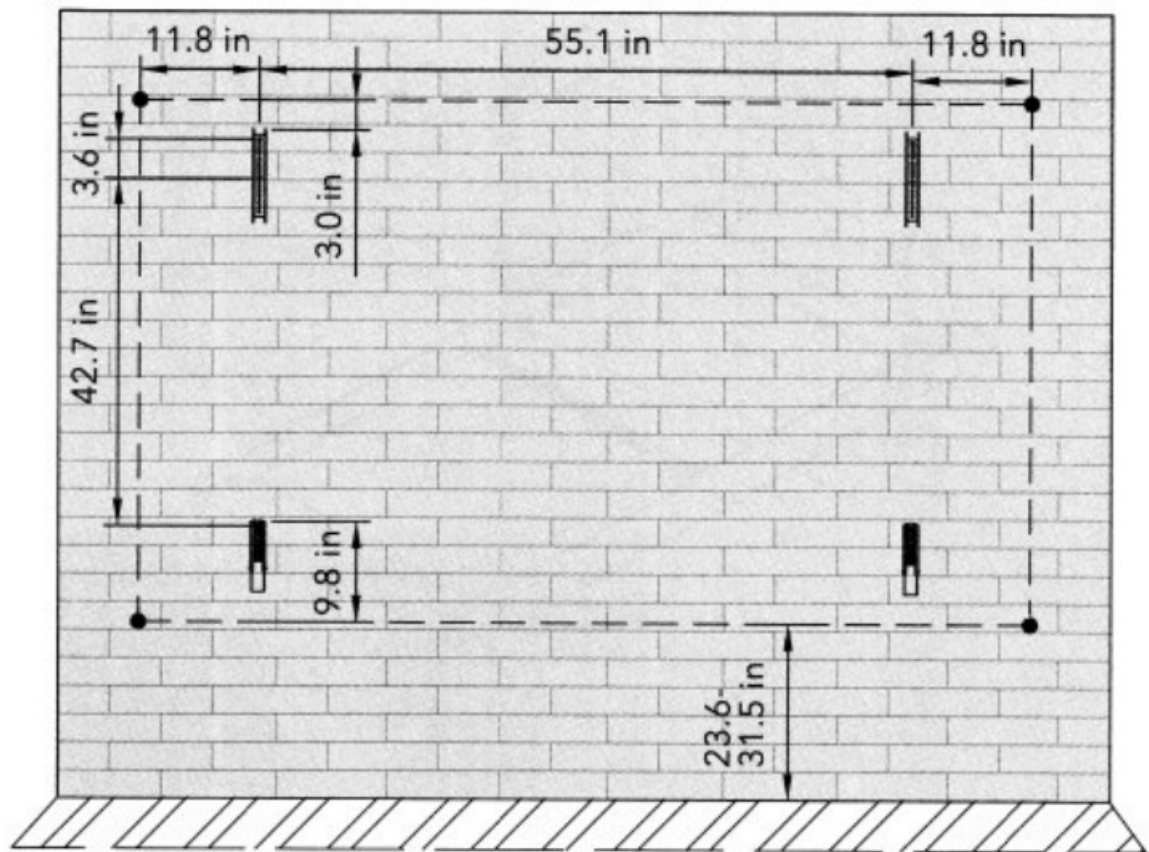
Fix the plastic corner protectors onto the four corners.



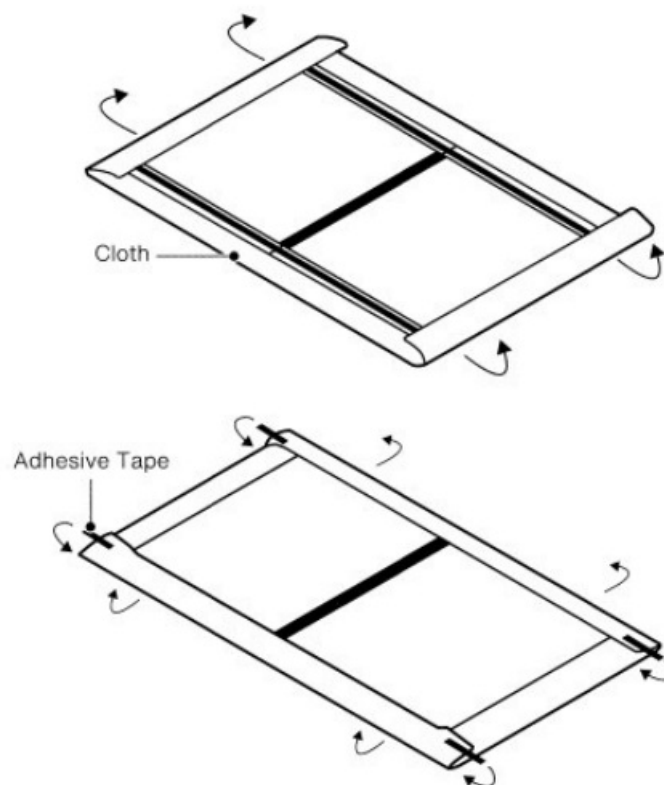
Mount on the Wal

1. Estimate the wall mount area for the screen. The lower edge of the screen should be 60-80cm/ 23.6-31.5 in above the ground (as shown below).
2. Measure the distance between the spots where the wall brackets will be mounted with the included level ruler.

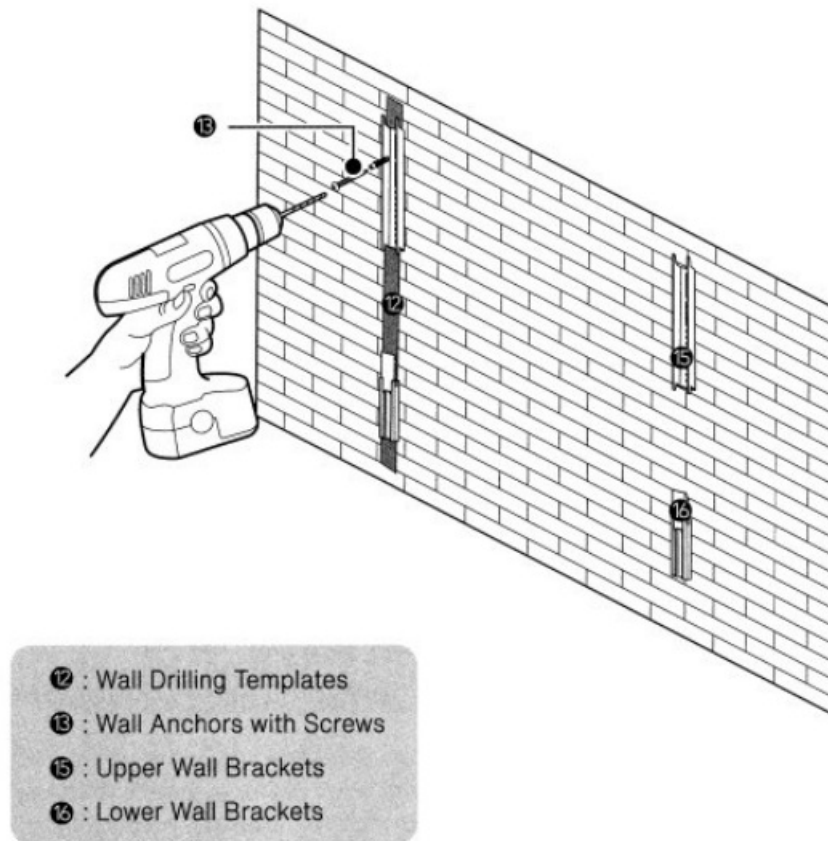
Recommended Distance



3. Make sure the screen is correctly assembled, then wrap the screen front with the cloth to prevent it from being damaged or scratched

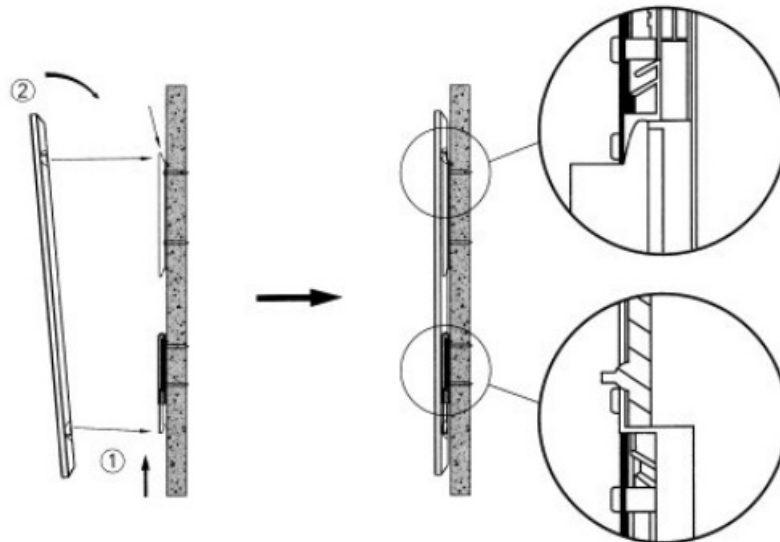


4. Drill holes respectively and install the four wall brackets using the wall anchors with screws.
Note: Make sure the brackets are level with the level ruler.



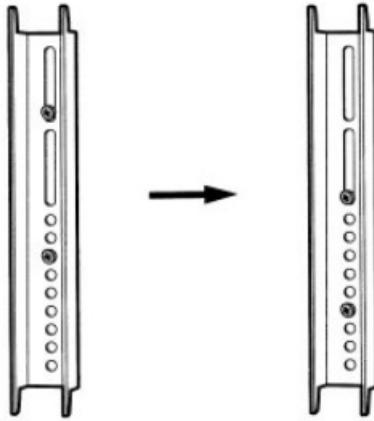
5. Mount the screen onto the wall as shown below.

1. Insert the lower side of the screen into the lower wall bracket, then push upwards to compress the spring.
2. Insert the upper side of the screen into the upper wall bracket, then release.



Screen Height Adjustment

Adjust the upper wall bracket by repositioning the screws and screwing them into the lower holes (adjustable range: 0-50mm).



WARRANTY AND SERVICE

We will provide you with after-sales service based on specific local policies. Please contact your local sales representative or after-sales team for more details. For any questions or concerns, please email us at support@vava.com or call us at (877) 969-8282 (Monday – Friday, 9:00 a.m. – 5:00 p.m. PST).

Documents / Resources



[VAVA 120-ALR Projector Screen Max](#) [pdf] User Manual
120-ALR Projector Screen Max, 120-ALR, Projector Screen Max, Screen Max