



# VARMILO FK2 Fighting Game Keyboard User Manual

[Home](#) » [VARMILO](#) » VARMILO FK2 Fighting Game Keyboard User Manual 

## Contents

- [1 VARMILO FK2 Fighting Game Keyboard](#)
- [2 FEATURES](#)
- [3 Product Description](#)
- [4 Introduction to the functional keys](#)
- [5 Switch replacement instructions](#)
- [6 FK2 Specifications](#)
- [7 SOCD Setting](#)
- [8 Switching instructions](#)
- [9 Keys function description](#)
- [10 Introduction to the Web Driver](#)
- [11 Documents / Resources](#)
  - [11.1 References](#)

# VARMILO

**VARMILO FK2 Fighting Game Keyboard**



## FEATURES



FK2 main device ×1



Type-C wire ×1



anti-shedding sheath



Handbag



User manual



Spare switches

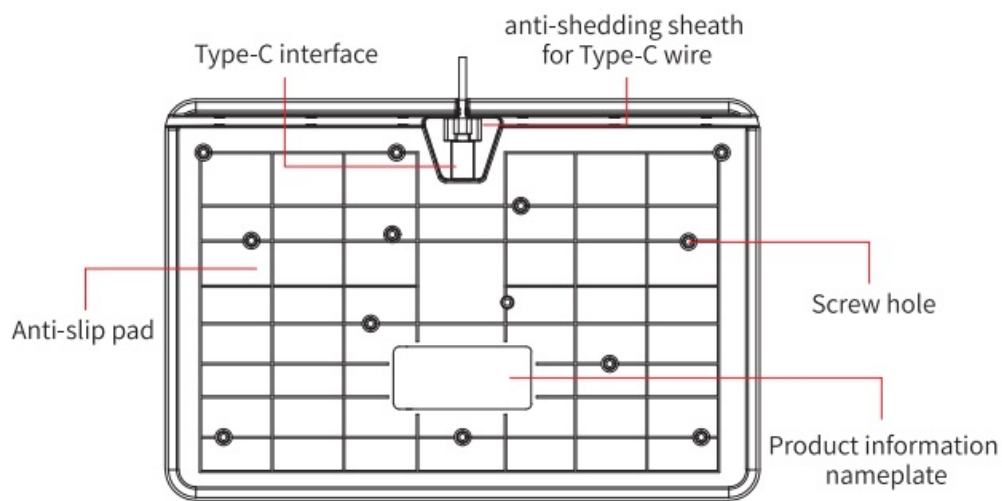


Pry



Switch puller

## Product Description



Insert the Type-C wire



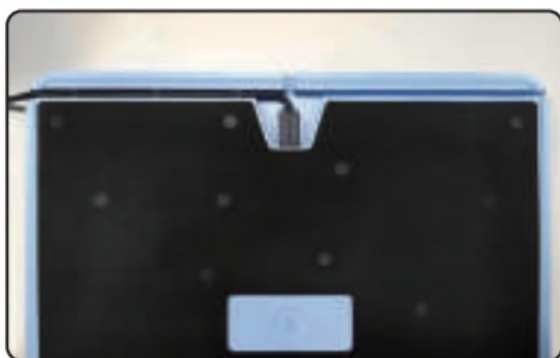
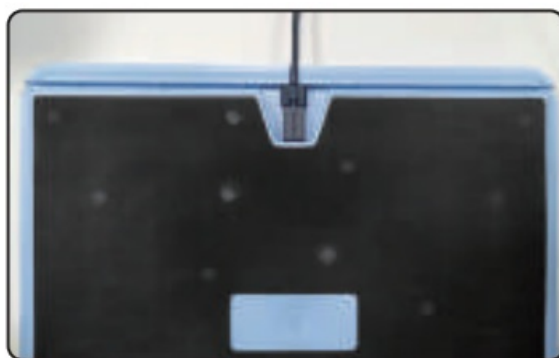
Align the notch of the anti-shedding sheath downwards with the Type-C wire



Press down gently

### Three-way outlet

- **Direct outlet:** install the Type-C wire first, and then install the silicone anti-shedding sheath.
- **Left and right outlet:** After taking out the silicone anti-shedding sheath, outlet the Type-C left or right according to personal needs.



### Introduction to the functional keys

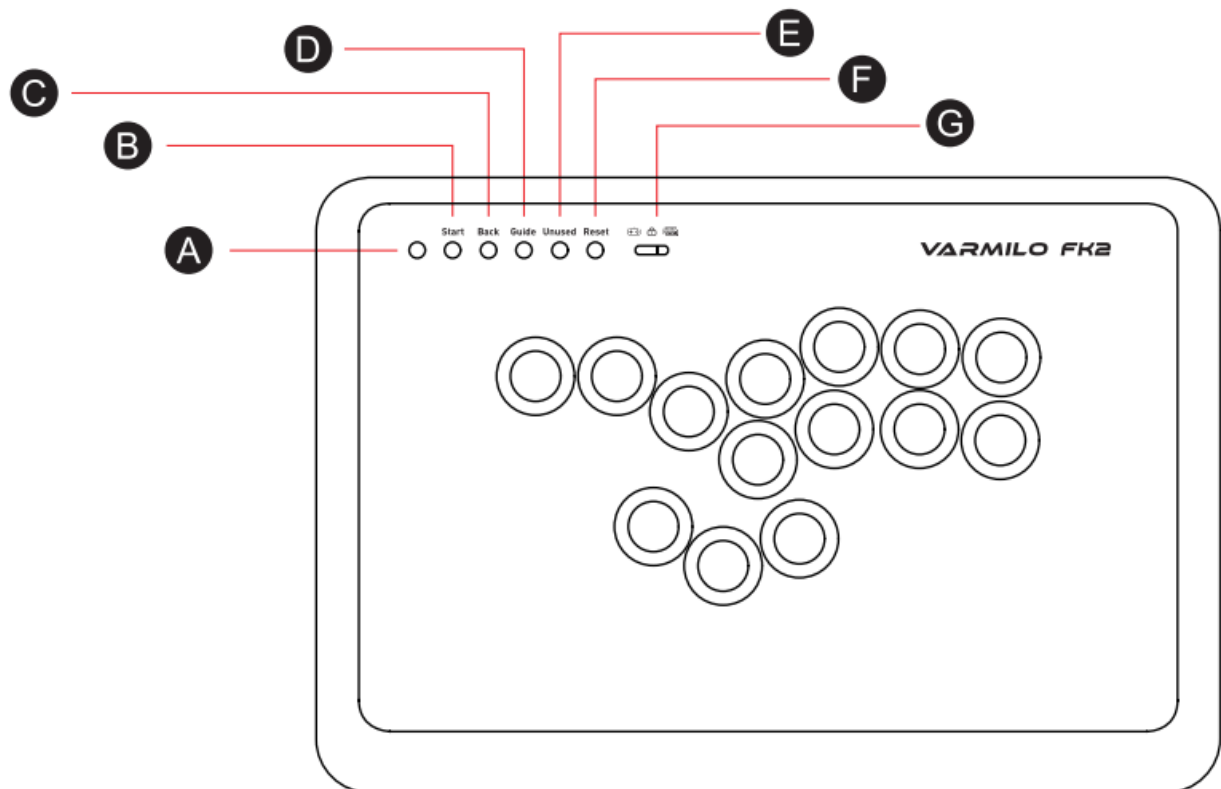
- **RE:** Function introduction of the function keys on the upper left (from left to right)
- **A** Power on (welcome rainbow light), the white light is always on (working status), the red light flashes 3 times

(when resetting)

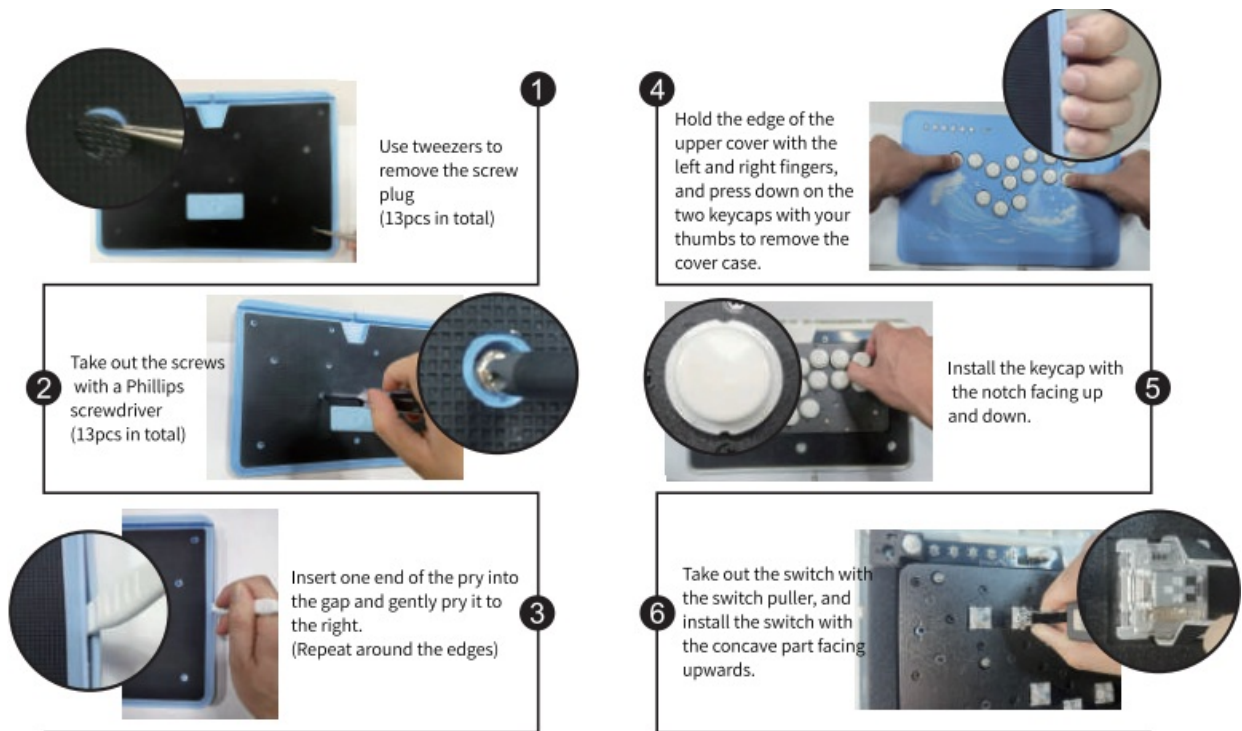
- **G** Left-handle mode, right-keyboard mode (please disconnect when switching modes).
- **Turn the switch to the left:** lock the keys under the handle mode.
- **Turn the switch to the right:** lock the keys under keyboard mode.

### Handle mode/Keyboard mode

- **G**) toggle switch on the left G toggle switch on the right
- **A**) Signs lamp Signs lamp
- **B**) Start Enter
- **C**) Back Unused
- **D**) Guide Unused
- **E**) Unused Mouse Left
- **F**) Reset Reset
- **G**) Mode switch and lock-key switch Mode switch and lock-key switch



### Switch replacement instructions



## FK2 Specifications

Case materials	ABS
Keycaps materials	ABS
Dimensions(mm)	329.23.224.22*26.8 (mm)
Weight(g)	1404.2g
Trigger travel(mm)	1.5mm(+0.3mm/-0.2mm)
Trigger Force(GF)	40gf (+10gf/-10gf)
Terminal Force(GF)	50gf(+10gf/-10gf)
Original trigger travel (mm)	0.3mm(+0.1mm/-0.1mm)
Reset Travel (AUTO) (mm)	Release Sensitivity 0.2mm
Power Consumption (mAh)	5V 35mAh below
Response speed after triggering (ms)	5ms within
Polling rate (Hz)	support 1000Hz

## SOCD Setting

- **Note:** before the manual setting, turn the toggle key to the lock key, and then the manual setting will take effect in both handle mode and keyboard mode.
- When the user deletes or changes any of the ASDW keys in the web driver, the SOCD setting of the default key layer in keyboard mode becomes invalid.
- **Tips** for successful setting: The green light in the upper left corner of the keyboard flashes three times and then returns to white.

Item	Explanation	FK2 key combo
Fixed (↑+↓)	Conflict offsets when ↑+↓ are pressed, no triggering.	Guide+Unused+K7
Fixed (←+→)	Conflict offsets when ←+→ are pressed, no triggering.	Guide+Unused+K8
Fixed (Specify a key)	When ←+→ is pressed, the Left key position is triggered first.	Guide+Unused+K2
	When ←+→ is pressed, the Right key bit is triggered first.	Guide+Unused+K4
	When ↑+↓ is pressed, the Down key is triggered first.	Guide+Unused+K3
	When ↑+↓ is pressed, the Up key will be triggered first.	Guide+Unused+K13
first: Priority (First)	Trigger the first pressed direction key	Guide+Unused+K6
last: Priority (Last)	Trigger the last pressed direction key	Guide+Unused+K5
Close the setting (OFF)	↑+↓/←+→ Turn off the SOCD function	Guide+Unused+K9

## Switching instructions

### Five-layer layout switching instructions

- **Note:** before the manual setting, turn the toggle key to the lock key, and then the manual setting the layer will take effect in keyboard mode only.
- Tips for successful setting: The green light in the upper left corner of the keyboard flashes three times and then returns to white.

MI-MS Layer switching	MI	Unused+K9
	M2	Unused+K6
	M3	Unused+K5
	M4	Unused+K7
	MS	Unused+K8

## Keys function description

Handel mode

Keyboard mode

## Introduction to the Web Driver

### Functions of the Web Driver

## 1. Key Setting

- Applied to keyboard mode. There are five key layers in keyboard mode. The 14 keys on each layer can be reset, and the key layer can be renamed.

## 2. Travel Setting

- Three travel modes, compatible with multiple game types, with extremely fast triggering and quick releasing.

## 3. Matrix Test

- Detect whether the keys are effectively triggered

## 4. Performance Setting

- SOCD mode setting, applied to handle mode and keyboard mode.

## 5. Handle key switch

- The key positions in the handle mode can be interchanged one-to-one.
- The above functions do not require any software. You only need to visit <https://fk2.varmilo.com> to set the functional parameters of the fighting game keyboard.
- <https://fk2.varmilo.com>
- **Manufacturer: Shenzhen Zhihaihe Tech Co., Ltd**
- **Address: 5th Floor, Block 2, 10th Industrial Zone, Tian Liao Community, Yu Tang Area, Guang Ming District, Shenzhen, China**
- **Telephone: +8675526484009**

## Documents / Resources



[VARMiLO FK2 Fighting Game Keyboard](#) [pdf] User Manual  
FK2 Fighting Game Keyboard, FK2, Fighting Game Keyboard, Game Keyboard, Keyboard

## References

- [User Manual](#)

[Manuals+.](#) [Privacy Policy](#)

This website is an independent publication and is neither affiliated with nor endorsed by any of the trademark owners. The "Bluetooth®" word mark and logos are registered trademarks owned by Bluetooth SIG, Inc. The "Wi-Fi®" word mark and logos are registered trademarks owned by the Wi-Fi Alliance. Any use of these marks on this website does not imply any affiliation with or endorsement.