



# VANKYO V700W Performance Projector User Manual

[Home](#) » [VANKYO](#) » VANKYO V700W Performance Projector User Manual 

## Contents

- [1 VANKYO V700W Performance Projector](#)
- [2 WHAT'S INCLUDED](#)
- [3 PRODUCT OVERVIEW](#)
- [4 QUICK START](#)
- [5 PROJECTOR CONNECTION AND INPUT SOURCE](#)
- [6 SCREEN MIRRORING](#)
- [7 For Android System](#)
- [8 BLUETOOTH CONNECTION](#)
- [9 SETTINGS](#)
- [10 PROJECTION DISTANCE & SIZE](#)
- [11 SPECIFICATION](#)
- [12 TROUBLESHOOTING GUIDE](#)
- [13 FCC](#)
- [14 Canada Regulatory Information](#)
- [15 Documents / Resources](#)
  - [15.1 References](#)
- [16 Related Posts](#)



## VANKYO V700W Performance Projector



## WHAT'S INCLUDED



Projector



Remote  
(Batteries Not Included)



User Manual

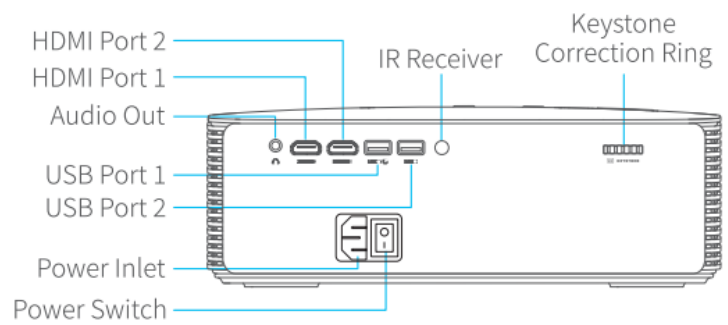
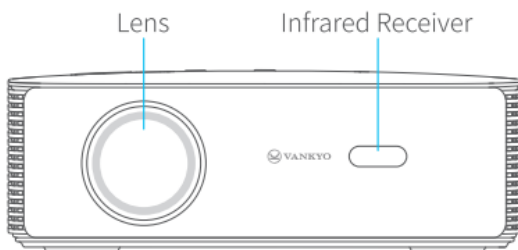


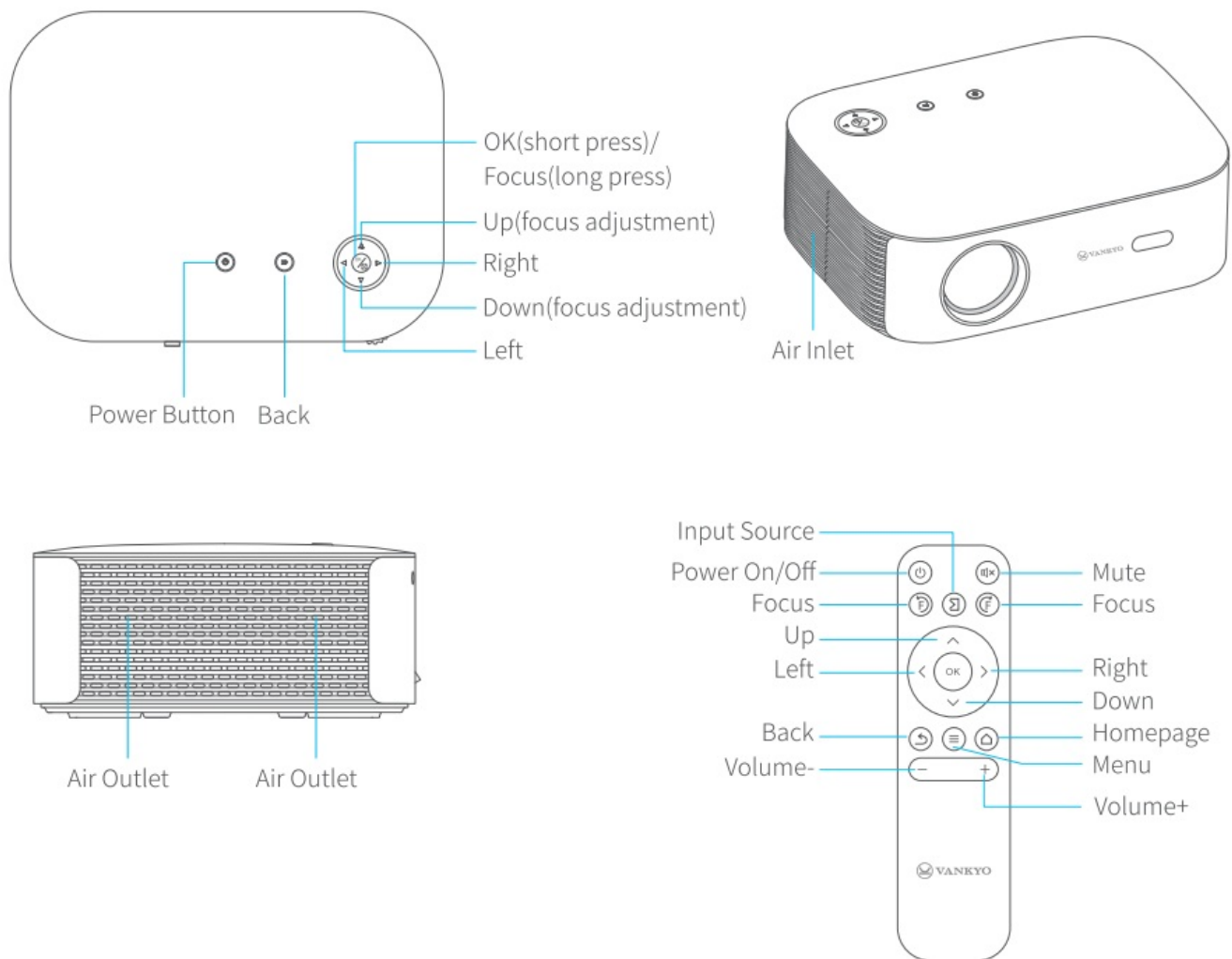
HDMI Cable



Power Cable

## PRODUCT OVERVIEW



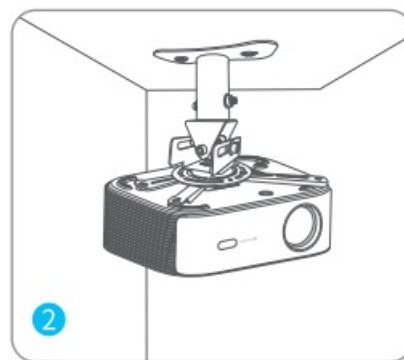


## QUICK START

### 1. Projector Installation

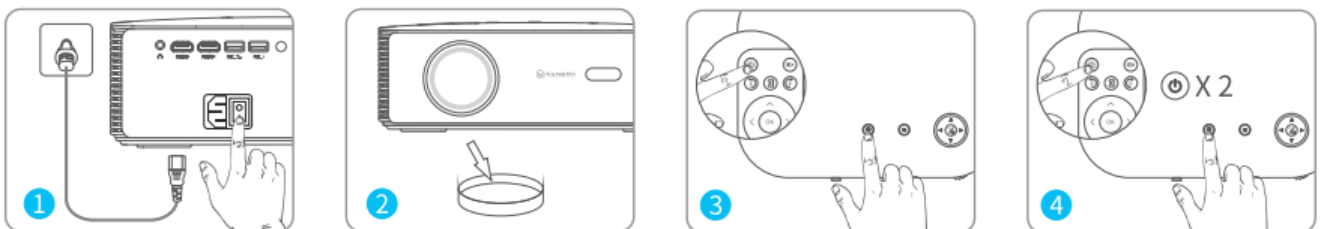


Horizontal Placement



Ceiling Mounting

### 2. Power On/Off



- Plug the power cord into an outlet and press the Power Switch.
- Take off the lens cover.
- After 8 seconds, press the Power Button to turn on the projector.

- Press the Power Button twice to turn off the projector, then press the Power Switch.
- **Note:** Whichever installation option you select, please make sure:
  - the projector is centered directly in front of the wall/screen, but not tilted or placed at an angle toward the wall/screen;
  - to go to Settings > Projection Setting > Projection Mode to select the corresponding projection mode so the images can be projected correctly.

### 3. Images Adjustment

1. Rotate the Keystone Correction Ring to correct the vertical keystone distortion until the image is evenly rectangular.



2. Press the focus buttons on the remote to sharpen the image focus until the blurry image becomes clear.

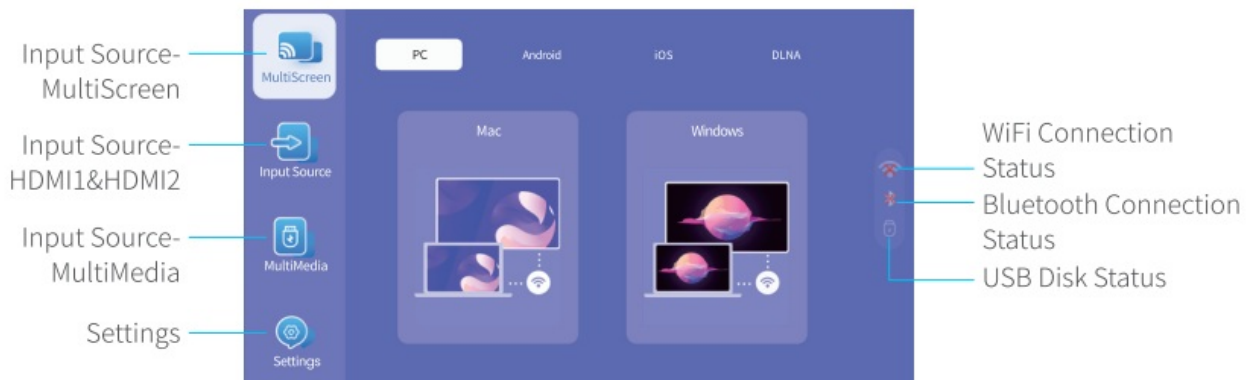


- **Tip:** You can also press and hold the OK button on the projector to enter the focus interface, then press the UP and Down buttons on it to adjust the focus.
3. Go to Homepage > Settings > Projection Setting > Image Scaling to enlarge or reduce the image size.



### 4. Homepage Overview

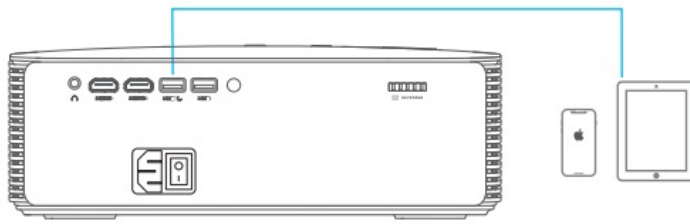
- The projector will enter the homepage after you power it on and set the language for first-time use.



## PROJECTOR CONNECTION AND INPUT SOURCE

Connect your device to the projector correctly, then select the right input source on the homepage.

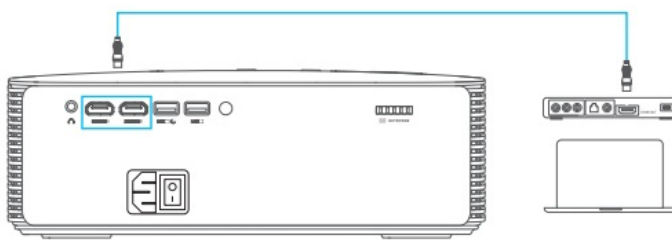
## 1. Screen Mirroring



(See details on pages 07-14)

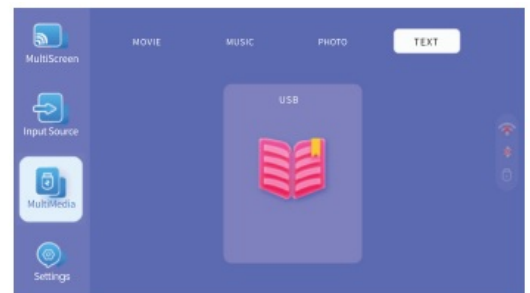
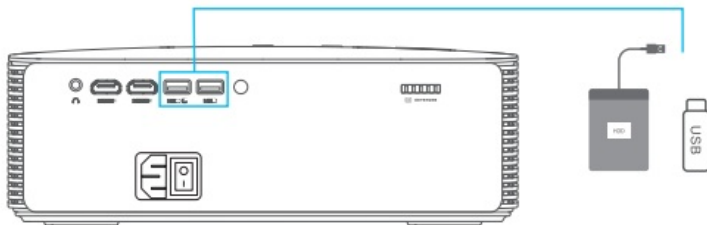
## 2. HDMI Connection

- This option is for connecting a device with an HDMI output port.



- HDMP, the HDMI logo, and High-Definition Multimedia Interface are trademarks or registered trademarks of HDMI Licensing LLC.

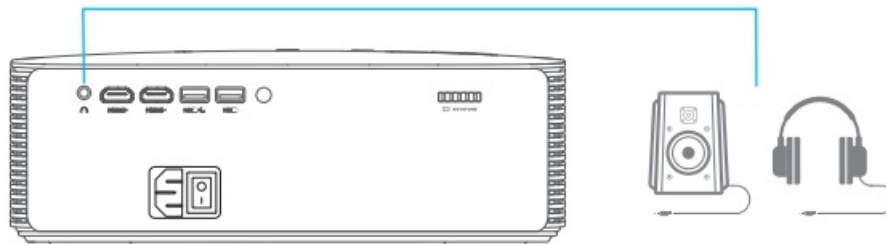
## 3. USB Connection



- **Photo Format Supported** BMP/JPG/PNG/JPEG
- **Audio Format Supported** AC3/AAC/MP2/MP3/FLAC/WMA
- **Video Format Supported** AVI/MP4/MKV/FLV/MOV/RMVB/MPEG2/H.264/XVID
- **Text Format Supported** TXT

## 4. Wired Speaker and Headphones Connection

- This option is not required to select any input source.

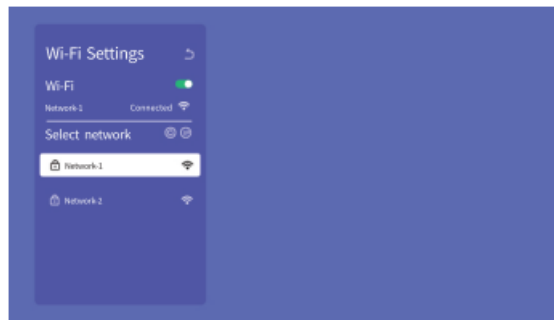


- Dolby, Dolby Audio, and the double-D symbol are trademarks of Dolby Laboratories Licensing Corporation.

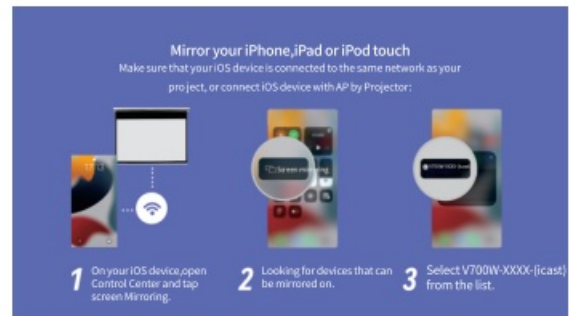
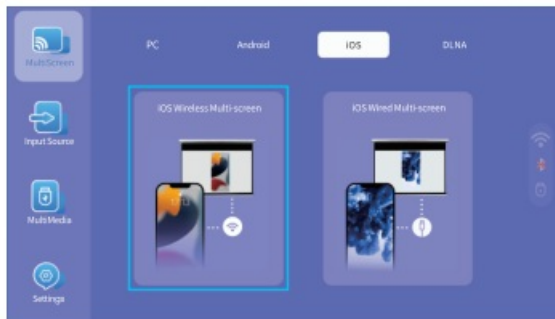
## SCREEN MIRRORING

### For iOS System Screen Mirroring Wirelessly

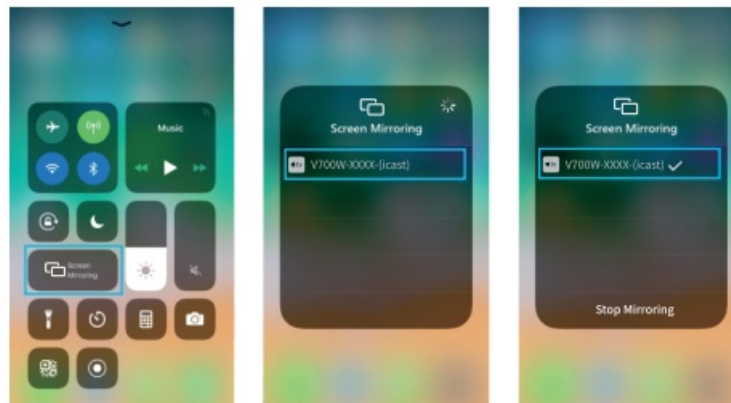
1. Go to Homepage > Settings > Connect Setting > WIFI Setting to search and connect the projector to your router's WiFi.



2. Enter the WiFi settings of your iOS device and connect it to the same router's WiFi.
3. Go to Homepage > MultiScreen > iOS and select iOS Wireless Multi-screen.



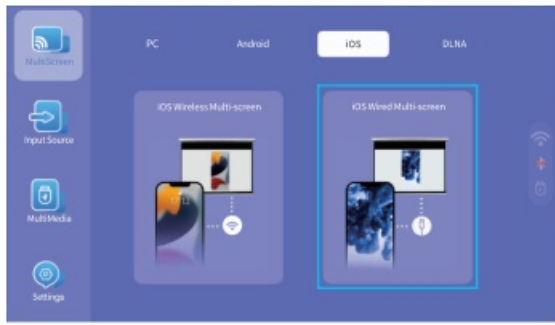
4. Activate Screen Mirroring/AirPlay Mirroring in the Control Center of your iOS device and search for the projector.
5. Select V700W-XXXX-(cast) from the search list to connect.




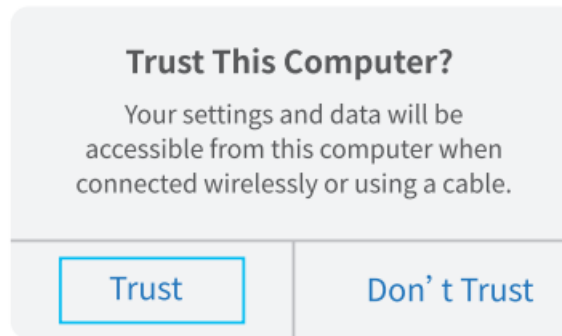
6. The contents on your iOS device will be mirrored to the wall/screen after a successful connection.

### Screen Mirroring via A Lightning Cable

1. Go to Homepage > MultiScreen > iOS and select iOS Wired Multi-screen.



2. Connect your iOS mobile device to the USB Port I/  of the projector using the ORIGINAL lightning cable.
3. Select Trust in the pop-up window of Trust This Computer.



4. The contents on your iOS device will be mirrored to the wall/screen after a successful connection.

## For Android System

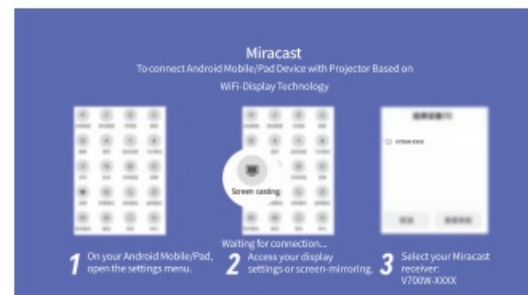
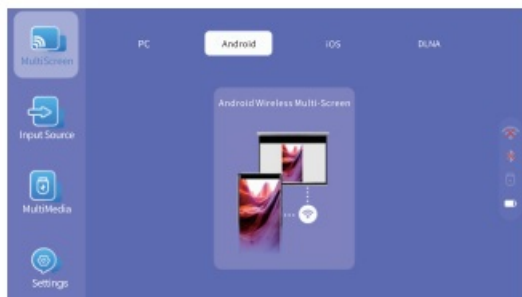
- To activate this function, please make sure your Android device supports Multi-screen/ Wireless display/ Smart View. Names may differ from one Android device to another.

1. Turn on the WiFi switch on your Android device.

### Notes:

- A successful WiFi connection is not a must, but please make sure the WiFi switch on your Android device is ON.
- Make sure the WiFi feature on your projector is enabled by going to Homepage > Settings > Connect Setting > WIFI Setting.

2. Go to Homepage > MultiScreen > Android and select Android Wireless Multi-Screen.



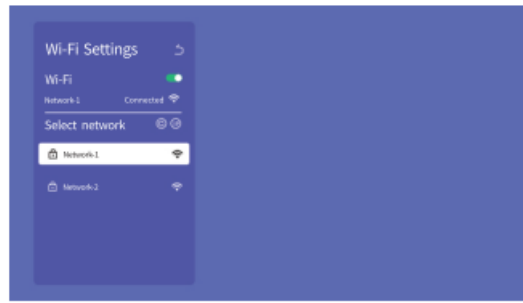
3. Activate the Multi-screen / Wireless display / Smart View function on your Android device and search for the projector.
4. Select V700W-XXXX from the searching list to connect.
5. The contents on your Android device will be mirrored to the wall/screen after a successful connection.

## For Mac



To activate this function, your Mac must support the Screen Mirroring feature.

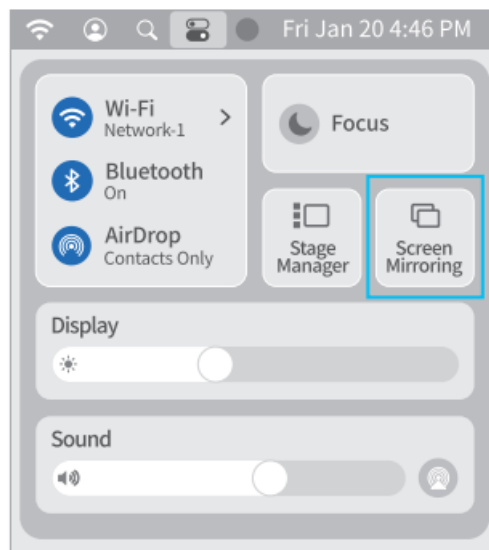
1. Go to Homepage > Settings > Connect Setting > WIFI Setting to search and connect the projector to your router's WiFi.



2. Enter the WiFi settings of your Mac and connect it to the same router's WiFi.
3. Go to Homepage > MultiScreen > PC and select Mac.



4. Click on Control Center in the upper right corner of your Mac's screen and select Screen Mirroring.



5. Select V700W-XXXX-(icast) from the search list to connect.
6. The contents on your Mac will be mirrored to the wall/screen after a successful connection.

**Note:** After successfully mirroring your screen, you can select whether to play the sound through your Mac or the projector in Settings > Sound on your Mac.

## For Windows

- To activate this function, your Windows device must support the Miracast feature.

1. Turn on the WiFi switch on your Windows device.

- **Note:** A successful WiFi connection is not a must, but please make sure the WiFi switch on your

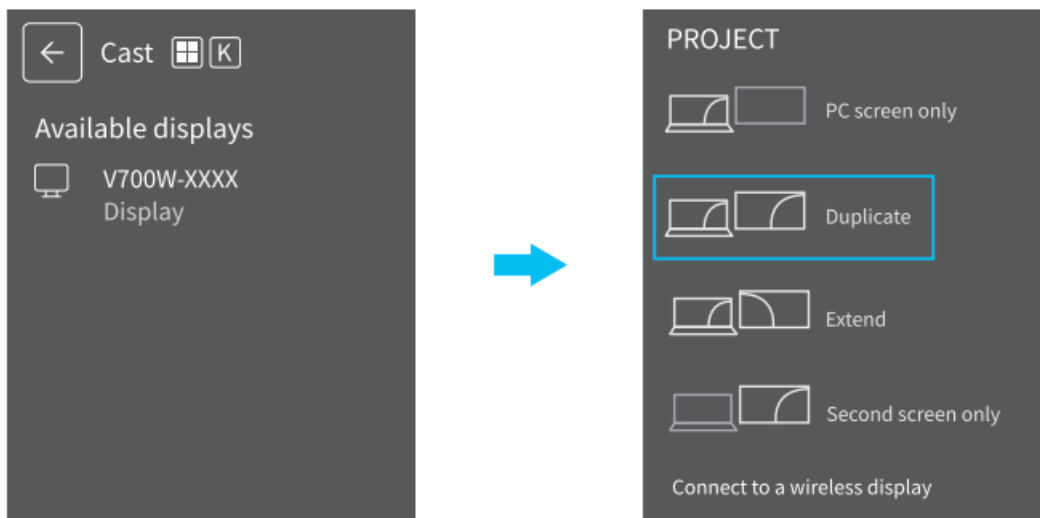


Windows device is ON.

2. Go to Homepage > MultiScreen > PC and select Windows.



3. Press the “Windows Logo + K” key combination on your keyboard to enter the Cast interface. Select V700W-XXXX from the searching list to connect.
4. Press the “Windows Logo + P” key combination on your keyboard to enter the PROJECT interface, then click Duplicate.



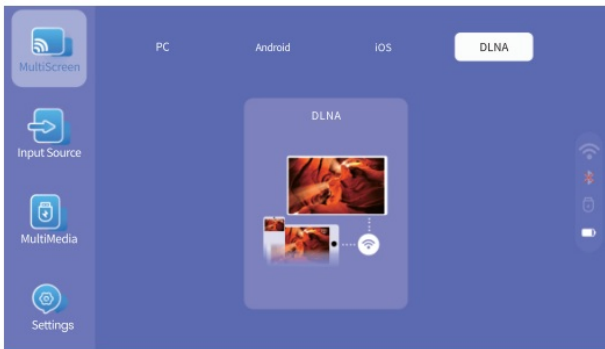
5. The contents on your Windows device will be mirrored to the wall/screen after a successful connection.

#### Notes:


- The fluency of screen mirroring will be affected by the network environment. A bandwidth of 100Mbit or more is recommended when using screen mirroring.
- Make sure your mobile device is close to the projector when using wireless connection. A distance within 3ft is recommended.
- Some mobile devices may not support screen mirroring due to the compatibility.
- Due to copyright restrictions of Hulu, Netflix, and similar services, the copyrighted contents on these streaming services CAN NOT be mirrored or cast.

#### SCREENCASTING

1. Connect your mobile device and the projector to the same router's WiFi.
2. Go to Homepage > MultiScreen > DLNA and select DLNA.



3. Launch a video player APP on your mobile device and select a video to play.

4. Tap  to search for the projector.

5. Select V700W-XXXX-(dlna) to connect.

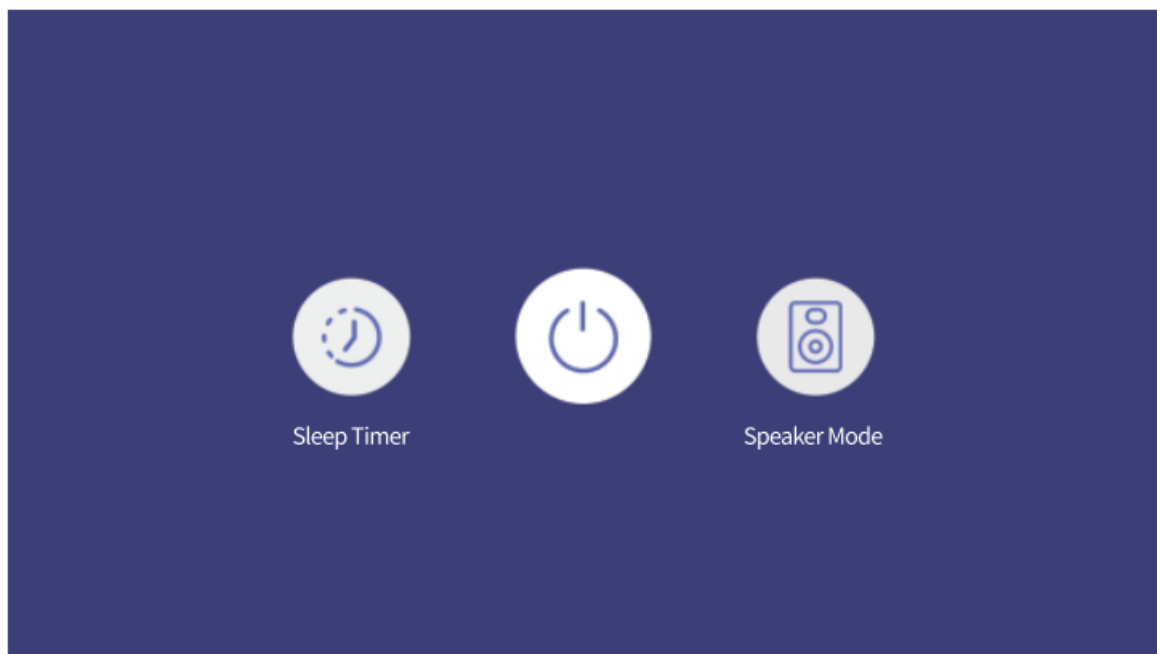
6. The contents on your device will be cast to the wall/screen.

- **Note:** When you cast a video from your mobile device, the video will only be displayed on the projected screen and you can still use your mobile device without interrupting the video or showing any of your other content.

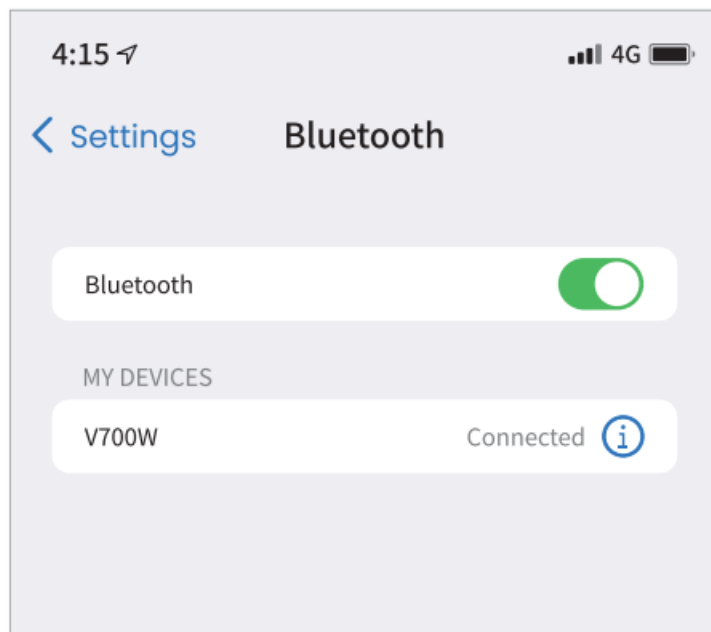
## BLUETOOTH CONNECTION

### 1. Use as A Bluetooth Speaker

- You can connect your mobile device to this projector via Bluetooth connection and use it as a Bluetooth speaker.
- **Step 1:** Press the power button to enter the interface below, then press > to change to Speaker Mode.



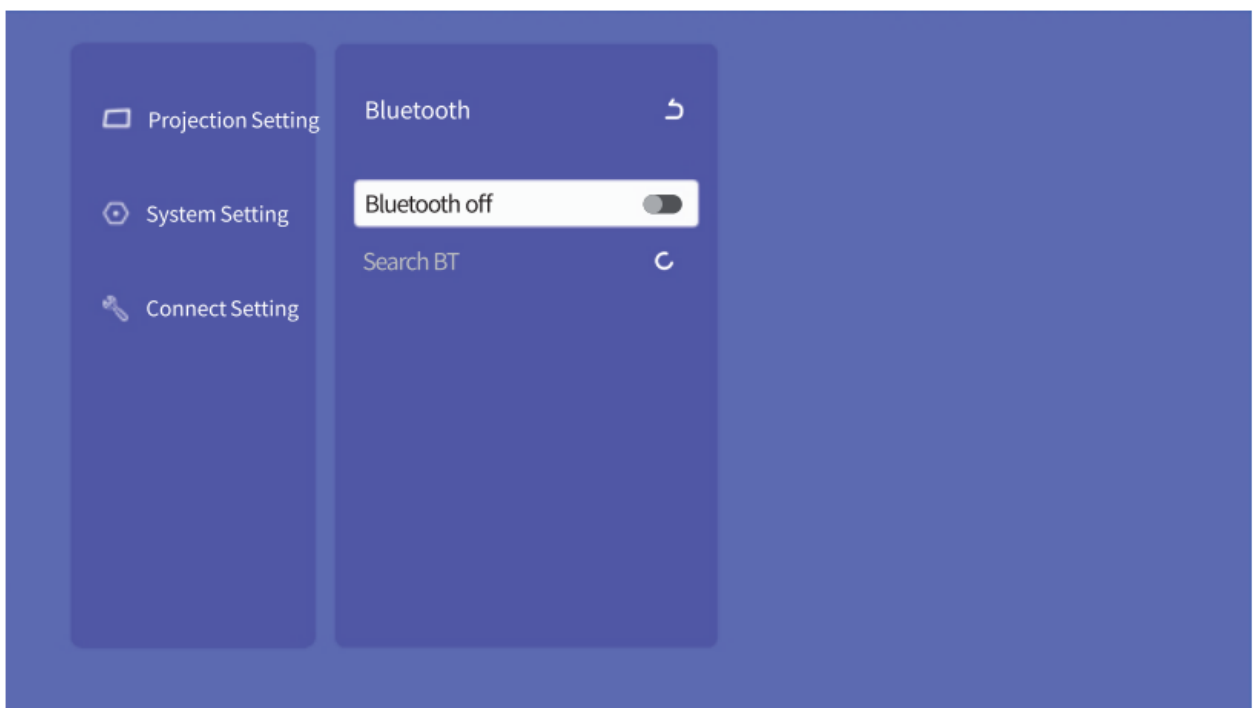
- **TIP:** Green means that the projection screen is off when the projector is playing audio; Normal means that the projection screen is on when the projector is playing audio.
- **Step 2:** Go to the Bluetooth setting of your mobile device to turn on the Bluetooth, then search for V700W from the searching list to pair the mobile device with the projector.



- **Tip:** Press the back button to exit this mode.

## 2. Connect to An External Bluetooth Speaker

- Except for the wired 3.5mm audio output port connection, you can also connect a Bluetooth speaker or a pair of
- Bluetooth headphones to this projector via the Bluetooth connection.
- **Step 1:** Turn on your Bluetooth device and make it ready for a Bluetooth connection.
- **Step 2:** Go to the Homepage > Settings > Connect Setting> Bluetooth to enter the interface below.

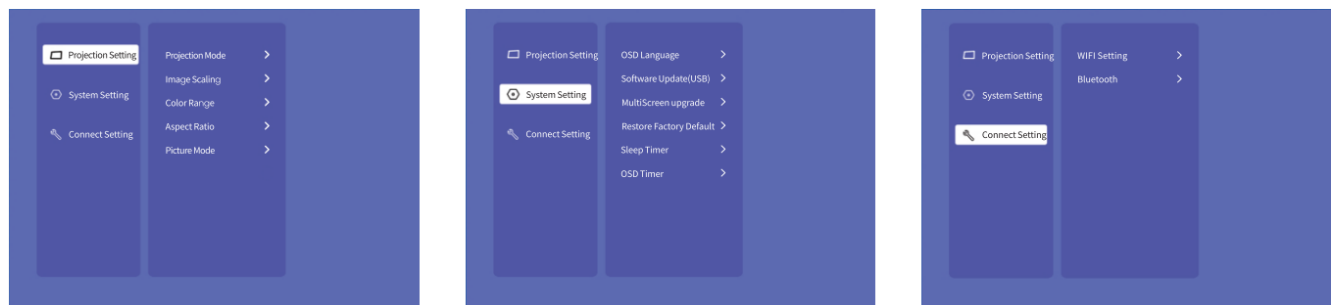


- **Step 3:** Press the Left or Right buttons to turn on or off the Bluetooth of the projector.
  - **Tip:** It takes about 3 seconds to turn off the Bluetooth; please wait patiently.
- **Step 4:** Select Search BT and press OK to start searching for available Bluetooth devices.
- **Step 5:** Select your Bluetooth device and pair it with the projector. Compared with the wired connection, Bluetooth connection and screen mirroring technology take more time to process digital audio data, convert said data to an audio signal, and stream the signal. However, the processing time varies depending on different Bluetooth speakers and headphones. Therefore, there may be a delay or slight lag due to the processing time and signal interference.

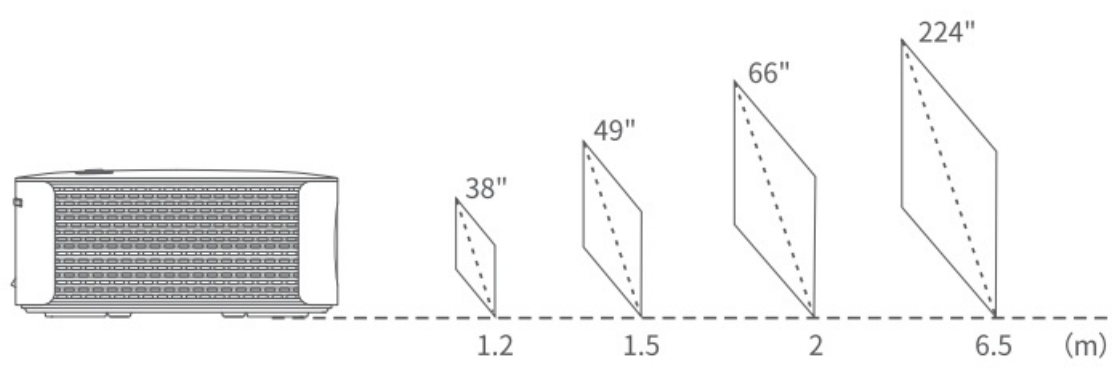
SETTINGS

The settings include Projection Setting, System Setting, and Connect Setting.

- **Projection Setting:** Flip the image, and adjust the image size/image color/aspect ratio/picture mode.
- **System Setting:** Set the language of the projector, update the software of the projector with a USB disk, restore the projector to factory settings, set the time duration for the projector to power off automatically, and set the time duration for a pop-up window to disappear.
- **Connect Setting:** Connect the projector to WiFi or Bluetooth.



PROJECTION DISTANCE & SIZE



- The recommended projection distance varies with different projection contents.
- Please adjust the distance between the wall/screen and the projector as needed.
- Ambient darkness will improve the clarity of the projected images.

SPECIFICATION

Display Technology	LCD	Light Source	LED
Resolution	Native 1920 X 1080	Input Signal	576i, 576P, 720i, 720P, 1080i, 1080P
Installation Options	Front/Rear/Ceiling	Aspect Ratio	4:3/16:9/Auto
Focus	Manual(Electronic)	Keystone	Manual ±15°
Speaker	5W/4ohm x2	Power Supply	AC 100-240V, 50/60Hz

**Unit Dimension**

290\*220\*93mm  
(11.4\*8.7\*3.7inch)

**Unit Net Weight**

2.23kg(4.92lbs)

**Ports**

USB Port x2/HDMI Port x2/Audio Out x1

## TROUBLESHOOTING GUIDE

### 1. The copyrighted content from Hulu, Netflix, and similar services can not be mirrored or cast.

- Due to the copyright restriction from Hulu, Netflix, and similar services, the copyrighted contents CAN NOT be mirrored or cast.

### 2. What should I do if I want to watch copyrighted content from Hulu, Netflix, and similar services via the projector?

- Please prepare a Fire TV stick, Roku stick, or Chromecast (not included), then connect it to the projector.

### 3. Blurry image

- Adjust the focus ring/keystone.
- The projector and screen/wall must be at an effective distance.


### 4. Remote unresponsive

- Make sure the remote points at the IR receiver directly.
- Do not cover the IR receiver.
- Try a new pair of AAA batteries.

### 5. Upside down images

- Go to Homepage > Settings > Projection Setting > Projection Mode to flip the projection image.

### 6. Factory reset

- Go to Homepage > Settings > System Setting > Restore Factory Default or press  on the remote in any interface to access System Setting and enter Restore Factory Default, then select Confirm to reset the projector to default settings.

## FCC

### FCC Statement

Any Changes or modifications not expressly approved by the party responsible for compliance could void the user's authority to operate the equipment. This device complies with part 15 of the FCC Rules. Operation is subject to the following two conditions:

1. This device may not cause harmful interference, and
2. this device must accept any interference received, including interference that may cause undesired operation.

**NOTE:** This equipment has been tested and found to comply with the limits for a Class B digital device, under part 15 Of the FCC Rules. These limits are designed to provide reasonable protection against harmful interference in a residential installation. This equipment generates, uses, and can radiate radio frequency energy and, if not installed and used per the instructions, may cause harmful interference to radio communications. However, there is no guarantee that interference will not occur in a particular installation. If this equipment does cause harmful interference to radio or television reception, which can be determined by turning the equipment off and on, the user is encouraged to try to correct the interference by one or more of the following measures:

- Reorient or relocate the receiving antenna.

- Increase the separation between the equipment and the receiver.
- Connect the equipment to an outlet on a circuit different from that to which the receiver is connected.
- Consult the dealer or an experienced radio/TV technician for help.

This equipment complies with FCC radiation exposure limits set forth for an uncontrolled environment. This equipment should be installed and operated with a minimum distance of 20cm between the radiator& your body. This transmitter must not be co-located or operating in conjunction with any other antenna or transmitter.

## Canada Regulatory Information




### Radio equipment

- Operation of 5150-5250 MHz is restricted to indoor use only.
- This device contains license-exempt transmitter(s)/receiver(s) that comply with Innovation, Science, and Economic

**Development Canada's license-exempt RSS(s). Operation is subject to the following two conditions:**

1. This device may not cause interference.
2. This device must accept any interference, including interference that may cause undesired operation of the device.

### CAUTION

-  The symbol indicates the DC voltage
-  The symbol indicates AC voltage
-  RECYCLING

This product bears the selective sorting symbol for Waste electrical and electronic equipment (WEEE). This means that this product must be handled under European directive 2012/19/EU to be recycled or dismantled to minimize its impact on the environment. User has the choice to give their product to a competent recycling organization or the retailer when they buy new electrical or electronic equipment. This product can be used across EU member states. The mains plug is used as the disconnect device, the disconnect device shall remain readily operable. EU Compliance Statement: Shenzhen Van Top Technology & Innovation Co., Ltd. hereby declares that this device complies with the essential requirements and other relevant provisions of the Directive 2014/53/EU. A copy of the EU Declaration of Conformity is available online at <https://doc.vantop.com/>. In all EU member states, operation of 5150-5250 MHz is restricted to indoor use only. Please read this user manual thoroughly before you use the product and keep it well for future reference.

---

## Documents / Resources



[VANKYO V700W Performance Projector](#) [pdf] User Manual  
V700W Performance Projector, V700W, Performance Projector, Projector

References

- [User Manual](#)