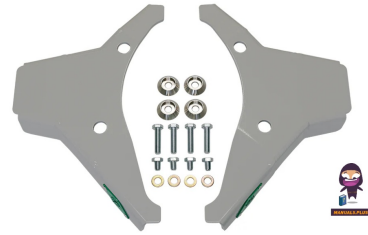



**2007 Plus Front
Lower Control Arm
Skidplates Sprinter**



VANCOMPASS 2007 Plus Front Lower Control Arm Skidplates Sprinter Instruction Manual

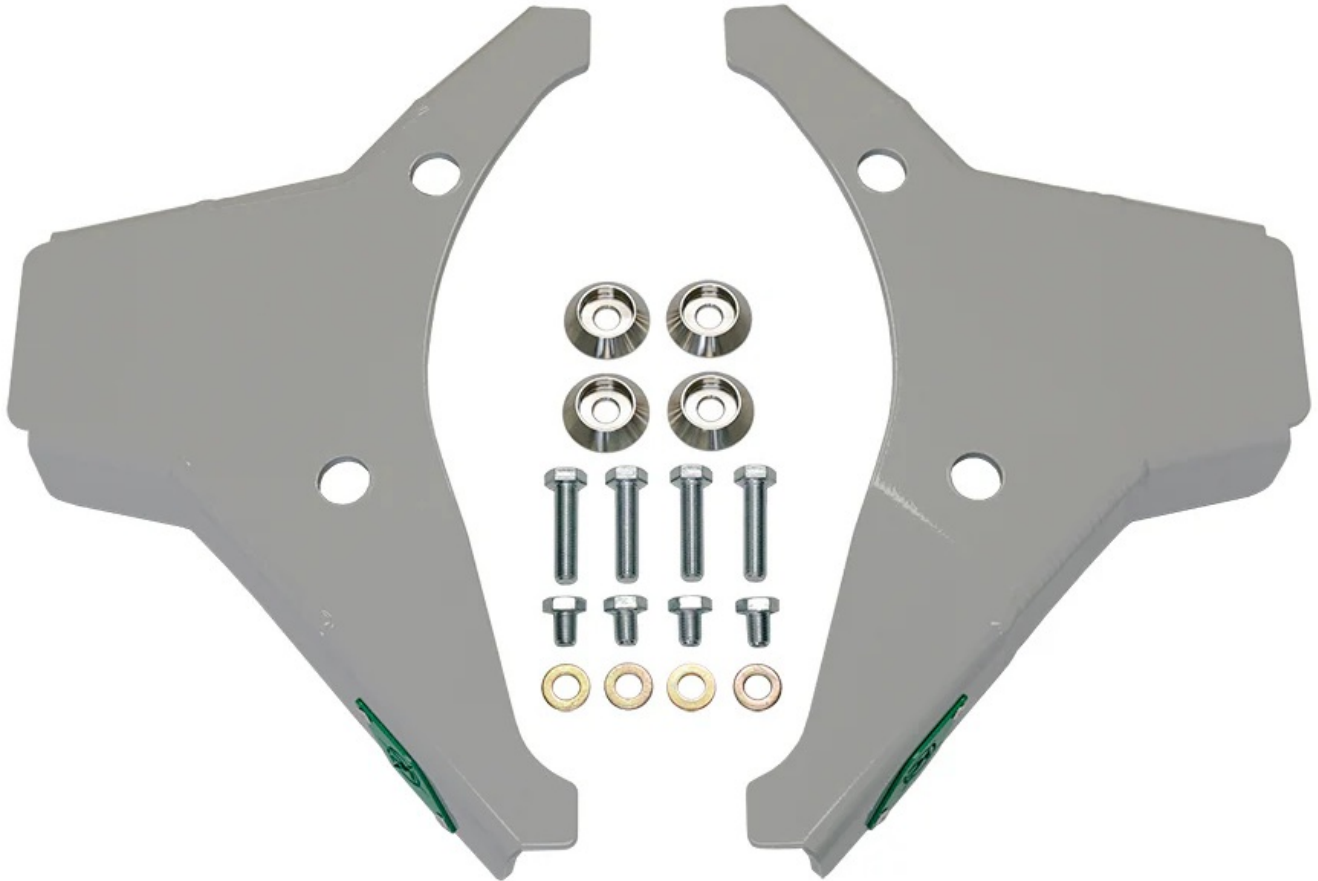
[Home](#) » [VANCOMPASS](#) » VANCOMPASS 2007 Plus Front Lower Control Arm Skidplates Sprinter Instruction Manual 

Contents

- [1 VANCOMPASS 2007 Plus Front Lower Control Arm Skidplates Sprinter](#)
- [2 Product Usage Instructions](#)
- [3 General Notes](#)
- [4 Parts List](#)
- [5 Installation](#)
- [6 RELEASE OF LIABILITY](#)
- [7 Documents / Resources](#)
 - [7.1 References](#)



VANCOMPASS 2007 Plus Front Lower Control Arm Skidplates Sprinter



Specifications:

- Compatible with MERCEDES SPRINTER van models 2007-current
- No drilling is required for the installation
- Includes skid plates for driver and passenger sides
- Includes necessary bolts, washers, and tools for installation
- Approximate Installation Time: 30 min – 1 hour

Product Usage Instructions

Tools Needed:

- Torque Wrench
- Basic wrench and socket set: Metric sizes 18mm, 19mm
- Automobile lift or floor jack and jack stands

Installation Steps:

1. Note: It is recommended to install with the front wheels removed for easier access.
2. Locate and remove the front upper leaf spring clamp bolt on the front lower control arm using an 18mm wrench.
3. Replace with the provided M12-1.50 x 50mm long bolt, ensuring a washer is placed under the bolt head.
Torque to 80 ftlbs (109 Nm) with a 19mm socket.
4. Repeat the process for the rear upper spring clamp bolt on the front lower control arm.
5. Fit the lower control arm skid to the bottom of the control arm, ensuring proper orientation.

6. Repeat installation on the passenger side.
7. Re-install wheels and tires if removed, and torque to manufacturer's specifications.
8. Double-check all torque specs after 100 miles of driving.

Installation is Complete:

Van Compass LLC strongly recommends installation by a certified mechanic. Ensure all instructions and warnings are followed to prevent any safety hazards.

Release of Liability:

Do not modify the product or mix component brands beyond intended use height.

FAQ:

- Q: Can I install this skid plate system without raising the vehicle?
A: Yes, it is possible to install the skid plate system with the vehicle on the ground, but it is easier with the front wheels removed.
- Q: How often should I check the torque specs after installation?
A: It is recommended to double-check all torque specs after driving 100 miles.

4112 – 2007-PRESENT, MERCEDES SPRINTER, FRONT LOWER CONTROL ARM SKIDPLATE

General Notes

- For the most up to date and current instructions, please visit our website at www.vancompass.com
- Please read all instructions thoroughly before starting installing Van Compass products.
- This skid plate can be installed with the vehicle on the ground, sitting under its own weight. However, installation is MUCH easier with the front wheels removed.
- This is a bolt on skid plate that can be installed with simple hand tools on all NCV3 and VS30 sprinter van models 2007-current. No drilling is required.
- This skid plate can be completely removed, allowing the vehicle to be returned back to stock configuration if desired.

Parts List

4112 – 2007-PRESENT, MERCEDES SPRINTER, FRONT LOWER CONTROL ARM SKIDPLATE

- (1) 411201-LH MERCEDES SPRINTER, FLCA SKIDPLATE, DRIVER SIDE
- (1) 411201-RH MERCEDES SPRINTER, FLCA SKIDPLATE, PASSENGER SIDE
- (4) HM12-1.50-50-10.9 M12-1.50 X 50MM LONG, HEX HEAD BOLT, GR 10.9
- (4) HM12-1.50-16-8.8 M12-1.50 X 16MM LONG, HEX HEAD BOLT, GR 8.8
- (4) 411202-01 STAINLESS CONTROL ARM SKIDPLATE BOLT WASHER
- (4) WFM-12 M12 FLAT WASHER

Tools Needed

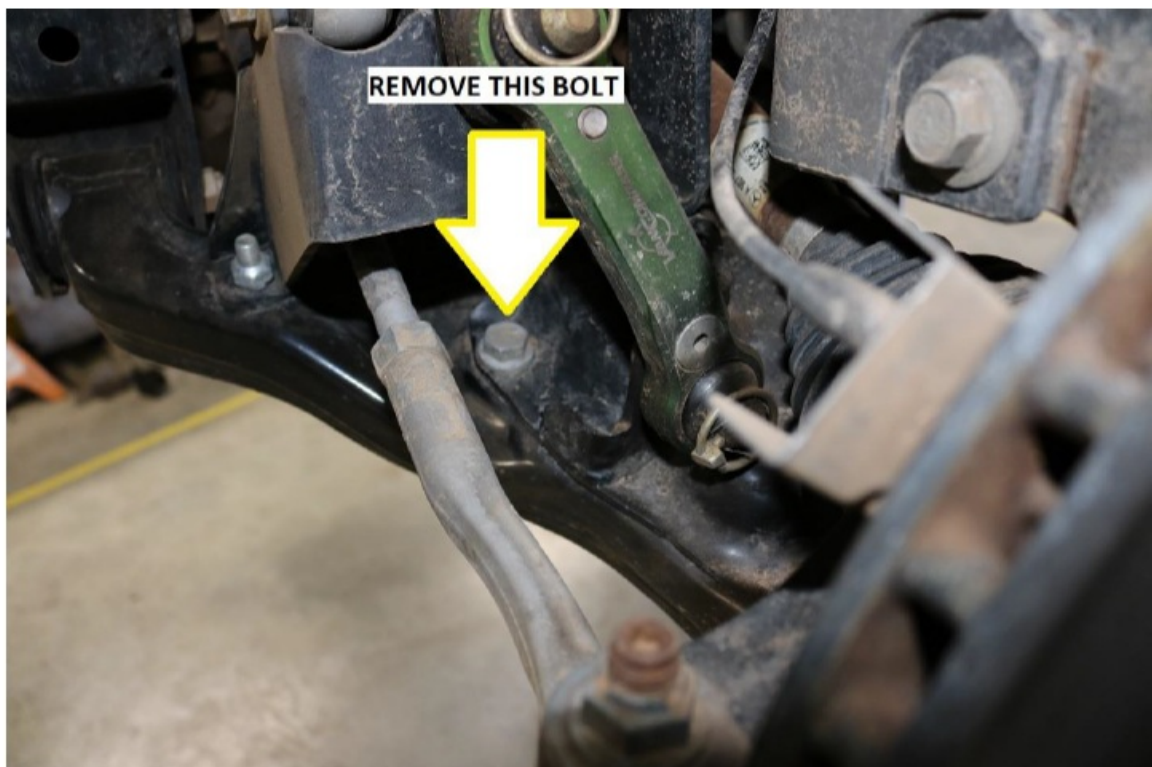
- Simple hand tools:
 - Torque Wrench
 - Basic wrench and socket set:
- Metric sizes: 18mm, 19mm
- Recommended:
 - Automobile lift or floor jack and jack stands

Approximate Installation Time

- Professional shop with automotive lift: 20 min – 30 min
- Driveway install with floor jack: 30 min – 1 hour

Installation

1. Note; this skid plate system can be installed with the vehicle on the ground. It does not need to be raised up for installation. However, it is a lot easier to perform installation with the vehicle raised and front tires removed.
 1. These instructions will document installation with the front tires removed.
2. Locate and remove the front upper leaf spring clamp bolt on the front lower control arm. Use an 18mm wrench for removal. See image below for reference.



3. Replace the front upper spring clamp bolt with the M12-1.50 x 50mm long bolt provided. Be sure to use a washer under the bolt head. Install and tighten the bolt with a 19mm socket and torque to 80 ft-lbs (109 Nm)
4. Locate the rear upper spring clamp bolt on the front lower control arm. Again, remove and replace with the included M12-1.50 x 50mm long bolt provided. Use a washer under the bolt head and torque to 80 ft-lbs (109 Nm)



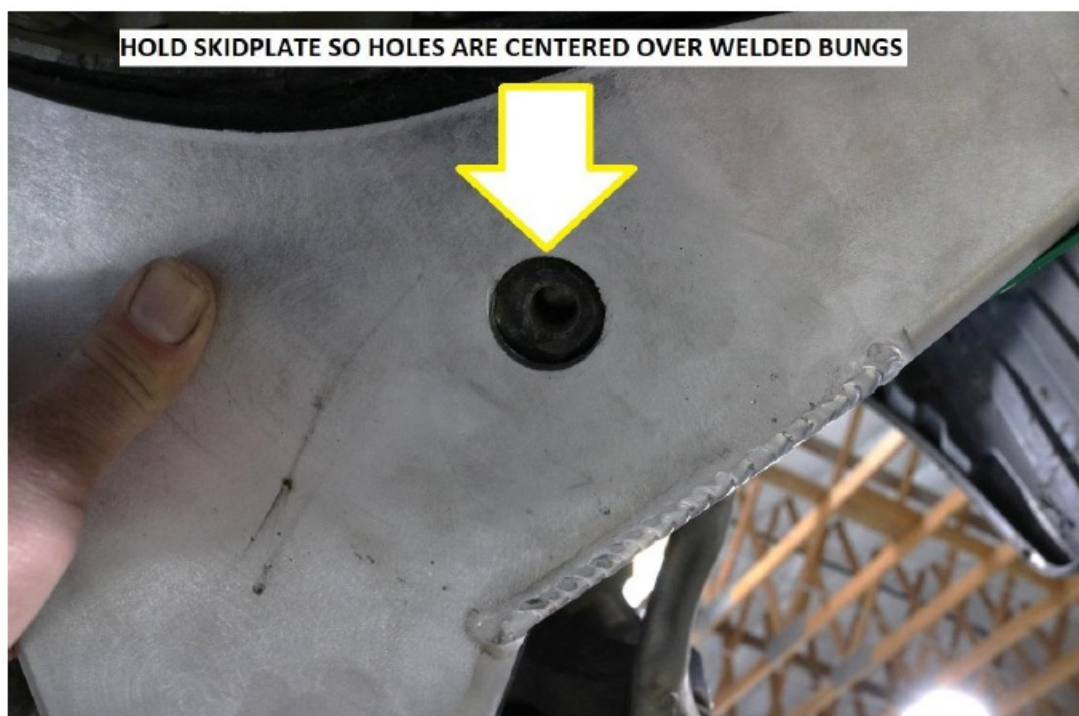
5. Fit the lower control arm skid to the bottom of the control arm. The large mounting holes should center over the welded threaded bungs on the bottom of the control arm.

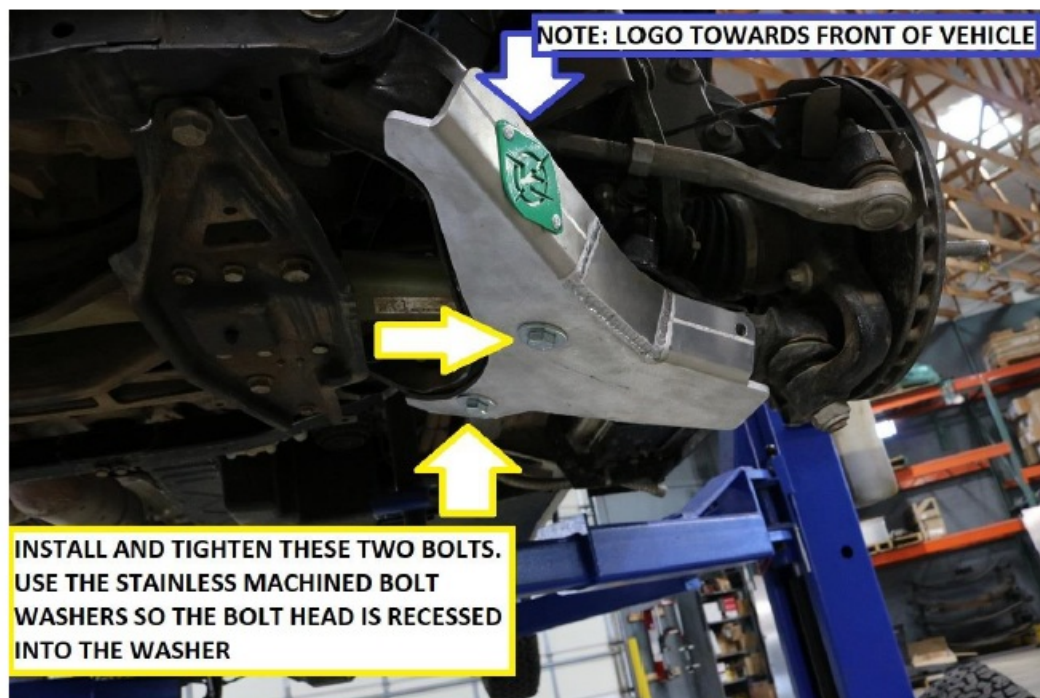
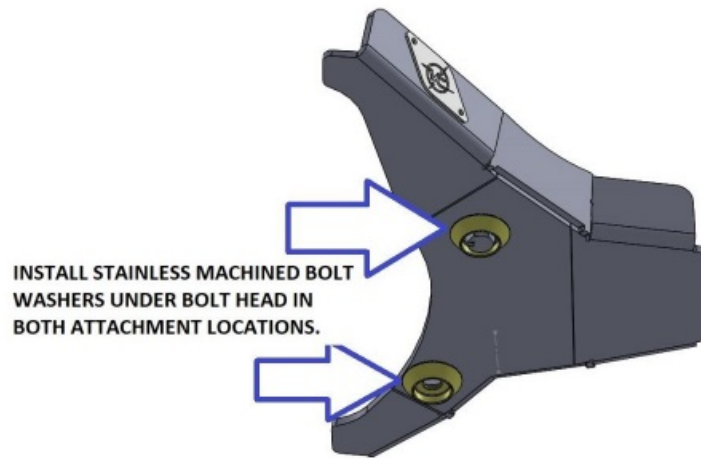
1. The skids are right and left-specific. The logo plate should be oriented toward the front of the vehicle.

6. Hold the skidplate to the bottom of the arm, centered over the threaded bungs and start one of the included M12-1.50 x 16mm long bolts with the stainless bolt washers. Snug this bolt so the control arm skidplate is secure using a 19mm socket / wrench.

1. Install the second M12-1.50 x 16mm long bolt with a large oversized washer and torque both bolts to 45 ft-lbs

NOTE– The bolts will sit at a slight angle before fully tightening as the threaded bungs are on a different plane from each other. This is normal and the bolt will still torque properly with the skid plate forming into shape.





7. Repeat installation on the passenger side.
8. Re-install wheels and tires if removed and torque wheels to manufacturer's specifications.
9. Double-check all torque specs after 100 miles of driving.

Installation is Complete

RELEASE OF LIABILITY

I, the customer, do hereby release and forever discharge Van Compass LLC, their agents, employees, successors and assigns, and their respective heirs, personal representatives, affiliates, successors and assigns, and any and all persons, firms or corporations liable or who might be claimed to be liable, whether or not herein named, from any claims, demands, damages, actions, causes of action or suits of any kind or nature whatsoever, whether known or unknown, fixed or contingent, which I now have or may hereafter have or claim to have, as a result of or in any way relating to the following: Parts sold & installed by Van Compass LLC or parts sold & installed by end-user; any parts sold online, any parts sold online or installed by a re-seller, any parts installed by an installation shop. It is understood and agreed that this payment is made and received in complete settlement and satisfaction of the aforesaid actions, causes of action, claims and demands; that this Release contains the entire agreement between the parties; and that the terms of this Agreement are contractual and not merely a recital. Furthermore, this Release shall be binding upon the undersigned, and his respective heirs, executors, administrators, personal representatives, successors and assigns. This Release shall be subject to and governed by the laws of the State of Idaho.

PRODUCT SAFETY WARNING:

- Van Compass LLC strongly recommends the installation of products be done by a certified mechanic. If this does not occur, be certain the person(s) installing the product read, understands and follow all instructions and warnings pertaining to the application before installation. Do not add, alter, or fabricate any factory or aftermarket parts to increase vehicle height over the intended height of the Van Compass LLC product purchased. Mixing component brands is not recommended.
- Installation of suspension lift kits or any other lifting kits or devices will raise the center of gravity. For this reason, Van Compass LLC urges that extreme caution be used when encountering driving conditions which may cause vehicle imbalance. Furthermore, the driver's field of vision and judgment will not be as good due to the height of the vehicle.
- Due to the installation of larger tires, the speedometer will read slower than the actual speed being traveled and more distance will be required to stop the vehicle. It is the owner's responsibility to caution and warn any potential driver of the vehicle about these driving and handling conditions. Van Compass LLC will not be held liable or responsible for damages or personal injuries resulting from the use of lifting devices and or related products. The tires and rims should be changed to sufficiently increase the vehicle's total overall width and stability to help accommodate lifting devices.
- Van Compass LLC aftermarket suspension products and accessories modify a vehicle for uses that exceed conditions anticipated by the vehicle manufacturer. The uses include the high performance demands required during off-road. These conditions vary in the degree of extremity and cannot be controlled by the vehicle or product manufacturer. If the components within the suspension system or accessories become worn due to frequent and/or extreme use, the safety and reliability of the vehicle is at risk. The maintenance of aftermarket equipment to ensure the vehicle occupants' safety is entirely your responsibility. Do not purchase Van Compass LLC products unless you are willing to accept this responsibility. Do not install any Van Compass LLC suspension products or accessories unless you feel competent at installing the product without causing present or future injury to yourself or other vehicle occupants; seek an authorized installation center.
- Most states have some type of law limiting vehicle height. The amount of lift allowed, and how the lift can be achieved, varies greatly. Several states offer exemptions for farm and commercial registered vehicles. It is the vehicle owner's responsibility to check state and local laws to ensure that their vehicle will be in compliance. Van Compass LLC reserves the right to make changes in design, materials and specifications as deemed necessary without prior notice and without assuming obligation to modify any product previously manufactured. Obligation or liabilities will not be assumed concerning similar products previously advertised.
- This Release of Liability and Product Safety Warning has been read and fully understood by the undersigned and has been explained to me.

Documents / Resources

 4312 - 2007 FRONT, MERCEDES SPRINTER FRONT LOWER CONTROL ARM SKIDPLATES © 2007 Van Compass LLC All rights reserved. This document is the property of Van Compass LLC. It is to be used for informational purposes only. It is not to be reproduced, stored in a retrieval system, or transmitted, in any form or by any means, electronic, mechanical, photocopying, recording, or by any information storage and retrieval system, without the prior written permission of Van Compass LLC. Van Compass LLC 1000 Van Compass Drive Ft. Worth, TX 76104 Phone: 817-335-1111 Fax: 817-335-1112 Email: info@vancompass.com Website: www.vancompass.com	VANCOMPASS 2007 Plus Front Lower Control Arm Skidplates Sprinter [pdf] Instruction Manual 2007 Plus, 2007 Plus Front Lower Control Arm Skidplates Sprinter, Front Lower Control Arm Skidplates Sprinter, Lower Control Arm Skidplates Sprinter, Arm Skidplates Sprinter, Skidplates Sprinter, Sprinter
---	---

References

- [!\[\]\(7e19807c61da14f515588e95cd49886c_img.jpg\) Van Compass](#)
- [!\[\]\(8ff9e60a4b0560d7ec99179ef4779d9e_img.jpg\) Van Compass](#)
- [User Manual](#)

[Manuals+](#), [Privacy Policy](#)

This website is an independent publication and is neither affiliated with nor endorsed by any of the trademark owners. The "Bluetooth®" word mark and logos are registered trademarks owned by Bluetooth SIG, Inc. The "Wi-Fi®" word mark and logos are registered trademarks owned by the Wi-Fi Alliance. Any use of these marks on this website does not imply any affiliation with or endorsement.