



VANCO PULSE AUDIO WiFi Streaming Receiver User Guide

[Home](#) » [VANCO](#) » VANCO PULSE AUDIO WiFi Streaming Receiver User Guide 

Contents

- [1 VANCO PULSE AUDIO WiFi Streaming Receiver](#)
- [2 FEATURES](#)
- [3 PACKAGE CONTENTS](#)
- [4 PANEL DESCRIPTIONS](#)
- [5 BACK PANEL](#)
- [6 INDICATOR LIGHT](#)
- [7 CONNECT AND OPERATE](#)
- [8 SPECIFICATIONS](#)
- [9 SAFETY AND NOTICE](#)
- [10 TECHNICAL SUPPORT](#)
- [11 LIABILITY STATEMENT](#)
- [12 LIMITED WARRANTY](#)
- [13 Documents / Resources](#)
- [14 Related Posts](#)



PULSEAUDIO™

VANCO PULSE AUDIO WiFi Streaming Receiver



DEAR CUSTOMER

Thank you for purchasing this product. For optimum performance and safety, please read these instructions carefully before connecting, operating or adjusting this product. Please keep this manual for future reference. THIS PRODUCT IS 100% INSPECTED AND TESTED IN THE UNITED STATES TO VERIFY PERFORMANCE PARAMETERS.

WARNING

1. Do not install or place this unit in a built-in cabinet, or other confined space without adequate ventilation.
2. To prevent risk of electrical shock or fire hazard, due to overheating do not obstruct unit's ventilation openings.
3. Do not install near any source of heat, including other units that may produce heat.
4. Do not place unit near flames.
5. Only clean unit with a dry cloth.
6. Unplug unit during lightning storms or when not used for an extended period of time.
7. Protect the power cord from being walked on or pinched, particularly at the plugs.
8. Use unit only with accessories specified by the manufacturer.
9. Refer all servicing to qualified personnel.

FEATURES

The PulseAudio PASTREAM is a streaming audio receiver that allows amplifiers and distributed audio systems to stream music over a wired or wireless internet connection. A great solution to stream music to any audio device, or create a wireless distributed audio system, all with the ability of an easy to use and intuitive app! You can play and control music, downloaded or streamed from your phone, tablet, or computer. The PASTREAM is compatible with Airplay, DLNA, and WiFi Direct (Miracast) devices that are found within the same network, allowing for songs to be shared easily in a distributed audio system. In addition, a mobile app is available on iOS and Android market places, and allows the end user to sync their Spotify, Qplay, TuneIn, iHeartRadio, and Tidal accounts for an effortless and enhanced listening experience. Multiple PASTREAM's can be used within the same systems allowing everyone to listen to their own music and playlists!

WIFI STREAMING RECEIVER

Part P# ASTREAM

- Allows amplifiers and distributed audio systems to stream music over a wired or wireless internet connection
- A great solution for streaming music to any audio device, or creating a wireless distributed audio system

- Stream music directly or through a connected network
- Mobile control app available on iOS and Android market places
- Compatible with Airplay, DLNA, and WiFi Direct (Miracast) devices that are found within the same network, allowing for songs to be shared easily in a distributed audio system
- Allows user to sync their Spotify, Qplay, TuneIn, iHeartRadio, and Tidal accounts for an effortless and enhanced listening experience
- Additional units can be used within the same system, allowing multiple users to listen to their own music and playlists
- Works great with distributed audio systems

PACKAGE CONTENTS

- WiFi Streaming Receiver PASTREAM
- 3.5mm Audio Cable
- USB Cable
- UL USB Power Adapter (5V, 1A)
- Product Manual

PANEL DESCRIPTIONS



BACK PANEL

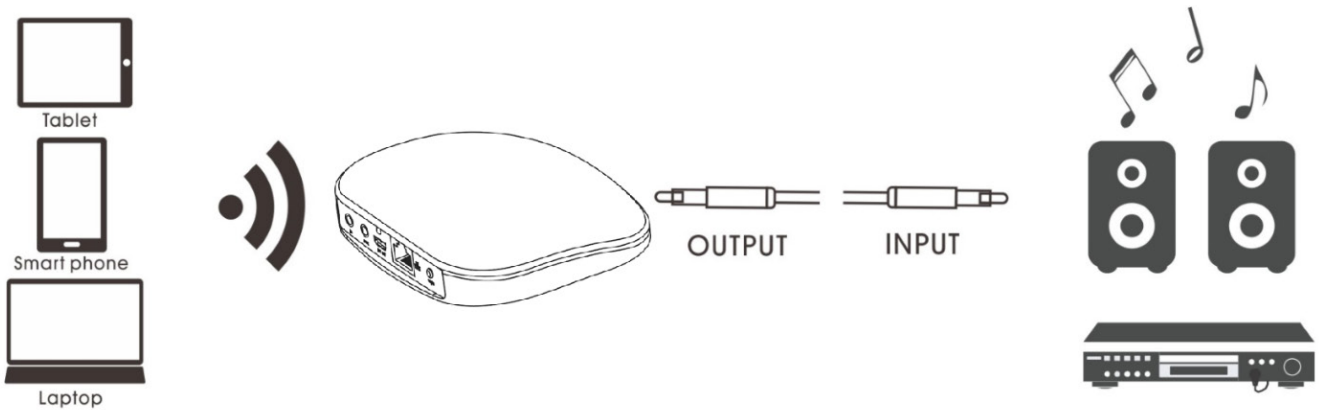
1. 3.5mm Stereo Audio Input: connect an audio source
2. 3.5mm Stereo Audio Output: connect to an amplifier, A/V receiver, distributed audio system, etc.
3. Link Status Light
4. Power (Micro USB): connect included USB cable and power adapter
5. Ethernet connection: connect to network for hardwired connection
6. WPS Button for wireless connectivity: Press to activate WPS, long press for factory reset

INDICATOR LIGHT

- **Red flashing:** Startup mode
- **Solid Red:** Successfully started, but not connected to the Internet
- **Green flashing:** In the process of connecting to the Internet
- **Solid Green:** Connected with the Internet
- **Solid Orange:** Line-in mode

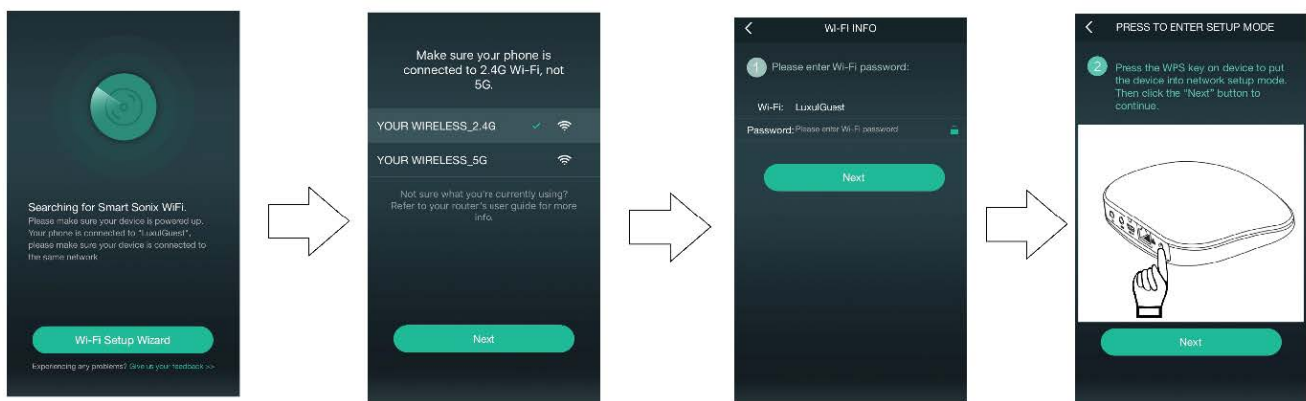
- **Alternating Red/Green:** In the process of updating or resetting

CONNECT AND OPERATE



The PASTREAM Receiver is a device that receives internet streaming music or other wireless music from any wifi enabled device. Multiple PASTREAM receivers can be used in a single distributed audio system to create multiple streaming sources.

1. Connect the output of the PASTREAM to an amplifier, A/V receiver, distributed audio system, etc. (output) using the 3.5mm stereo jacks
2. OPTIONAL: Connect a source (input) to the PASTREAM for wired audio connection, if utilizing wireless streaming, connection to the input is not necessary
3. Connect the included USB cable and power adapter to power up the unit
4. Connect a mobile device that will be the audio source to the local WiFi network
5. Connect the PASTREAM to the same WiFi network
6. Download the PASTREAM APP from the Google Play or Apple Marketplace, follow the steps for connection the app will provide



***PLEASE NOTE:** The WiFi function is only able to be connected and used through a 2.4GHz wireless system
To play music:

- From an iOS device, open Airplay to choose the PASTREAM as a receiver.
- From an Android device, open a music player with DLNA, choose the PASTREAM, then the music will be streamed to the receiver. Connection and stream can also be done with the PASTREAM app

Supported file types:

- iOS: Airplay,iTunes, Smartsonix APP, other App comply to DLNA like Spotify,BubbleUpnp
- Android: PASTREAM APP, other Apps that comply to DLNA like Spotify, etc.

SPECIFICATIONS

- App Control.....Compatible with Android/iOS
- WiFi ConnectionAirplay, DLNA, WiFi Direct (Miracast)
- WiFi StandardIEEE802.11b, IEEE802.11g, IEEE802.11n Standard
- Audio Input.....1x Analog Audio Input,1x RJ45 (Broad band connection)
- Audio Output1x Analog Audio Output
- Audio FormatMP3/WMA/AAC/AAC+/ALAC/FLAC/APE/WAV,etc
- Streaming Services.....Spotify, Qplay, TuneIn, IHeartRadio, and Tidal
- Local MusicStreaming directly from phone or Network Attached Storage
- Power InputMicro USB 5V
- Certification.....CE ROHS
- Dimension116x95x22 mm (4.5" x3.7"x0.8")

SAFETY AND NOTICE

The PASTREAM has been tested for conformance to safety regulations and requirements, and has been certified for international use. However, like all electronic equipment, the PASTREAM should be used with care. Please read and follow the safety instructions to protect yourself from possible injury and to minimize the risk of damage to the unit.

- Follow all instructions and warnings marked on this unit.
- Do not attempt to service this unit yourself, except where explained in this manual.
- Provide proper ventilation and air circulation and do not use near water.
- Keep objects that might damage the device and assure that the placement of this unit is on a stable surface.
- Use only the power adapter and power cords and connection cables designed for this unit.
- Do not use liquid or aerosol cleaners to clean this unit.
- Always unplug the power to the device before cleaning

TECHNICAL SUPPORT

In case of problems, please contact Vanco Technical Support by dialing 1-800-626-6445. You can also email technical support issues to techsupport@vanco1.com. When calling, please have the Model Number, Serial Number

(affixed to the bottom of the unit) and Invoice available for reference during the call. Please read this Instruction Manual prior to calling or installing this unit, since it will familiarize you with the capabilities of this product and its proper installation. All active electronic products are 100% inspected and tested to insure highest product quality and trouble-free installation and operation. The testing process utilizes the types of high-definition sources and displays typically installed for entertainment and home theatre applications. For additional information please visit www.vanco1.com.

LIABILITY STATEMENT

Every effort has been made to ensure that this product is free of defects. The manufacturer of this product cannot be held liable for the use of this hardware or any direct or indirect consequential damages arising from its use. It is the responsibility of the user and installer of the hardware to check that it is suitable for their requirements and that it is installed correctly. All rights are reserved. No parts of this manual may be reproduced or transmitted by any form or means electronic or mechanical, including photocopying, recording or by any information storage or retrieval system without the written consent of the publisher. Manufacturer reserves the right to revise any of its hardware and software following its policy to modify and/or improve its products where necessary or desirable. This statement does not affect the legal rights of the user in any way.

LIMITED WARRANTY


With the exceptions noted in the next paragraph, Vanco warrants to the original purchaser that the equipment it manufactures or sells will be free from defects in materials and workmanship for a period of two years from the date of purchase. Should this product, in Vanco's opinion, prove defective within this warranty period, Vanco, at its option, will repair or replace this product without charge. Any defective parts replaced become the property of Vanco. This warranty does not apply to those products which have been damaged due to accident, unauthorized alterations, improper repair, modifications, inadequate maintenance and care, or use in any manner for which the product was not originally intended. Items integrated into Vanco products that are made by other manufacturers, notably computer hard drives and liquid crystal display panels, are limited to the term of the warranty offered by the respective manufacturers. Such specific warranties are available upon request to Vanco. A surge protector, power conditioner unit, or an uninterruptible power supply must be installed in the electrical circuit to protect against power surges. If repairs are needed during the warranty period the purchaser will be required to provide a sales receipt/sales invoice or other acceptable proof of purchase to the seller of this equipment. The seller will then contact Vanco regarding warranty repair or replacement.

Vanco® International

506 Kingsland Drive Batavia, Illinois 60510 call: 800.626.6445 | fax: 630.879.9189 visit: www.vanco1.com

Learn more at pulseaudio1.com

Documents / Resources

	<p>VANCO PULSE AUDIO WiFi Streaming Receiver [pdf] User Guide VANCO, PULSEAUDIO, WiFi, Streaming Receiver</p>
---	---